

**Targus**<sup>®</sup>

**BLUETOOTH**<sup>®</sup>  
COMFORT LASER MOUSE

User Guide

## Introduction

Thank you for your purchase of the Targus Bluetooth Comfort Laser Mouse. This mouse uses Bluetooth technology which provides a seamless connection up to 33 ft (10 m) away. This is a plug and play device so no additional software is required. The advance scroll wheel feature program can be downloaded from the Targus web-site.

## Contents

- Targus Bluetooth Comfort Laser Mouse
- 2 x AA batteries
- User guide

## System Requirements

### Hardware

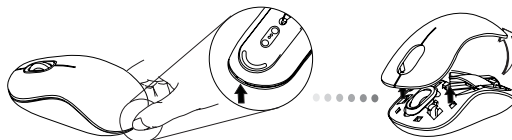
- Bluetooth-enabled computer

### Operating System

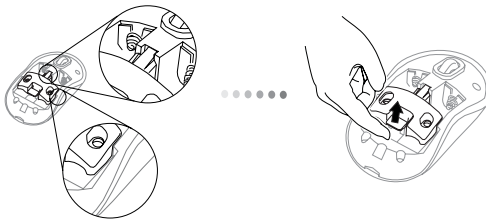
- Microsoft Windows® 2000
- Microsoft Windows® XP
- Microsoft Windows Vista®
- Microsoft Windows® 7
- Mac OS® X 10.4 or later


## Installing the Batteries

1. Remove the battery cover from the top of the mouse by using the notch on the back. Carefully lift the cover up as shown in the diagram.



2. Remove the battery safety clip by squeezing the center of the clip and sliding it back, towards the rear of the mouse. Lift up and rotate the clip out of the way.



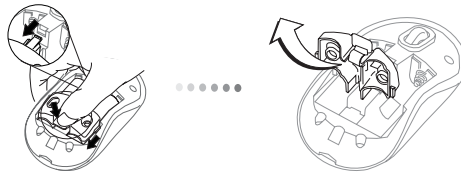
 NOTE: THE BATTERY SAFETY CLIP WILL NEED TO BE IN THE SECURE, LOCKED POSITION BEFORE THE BATTERY COVER CAN BE PUT BACK IN PLACE.

---

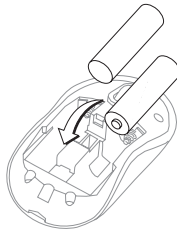
Targus Bluetooth Comfort Laser Mouse

---

3. Slide and lift to remove the battery holder as shown.



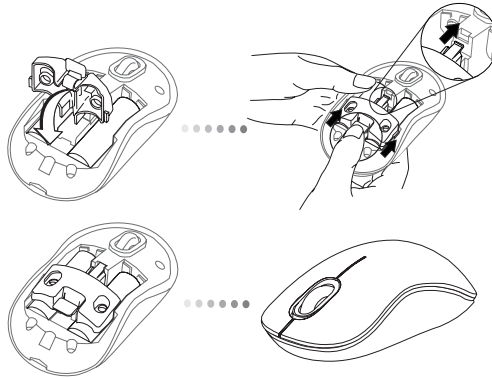
4. Insert the two AA batteries, making sure that the positive (+) and negative (-) ends of each battery match the polarity indicators inside the battery compartment.



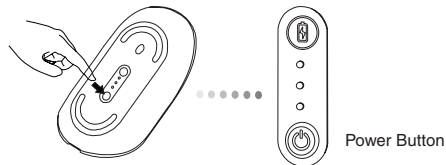
## Targus Bluetooth Comfort Laser Mouse

---

5. Replace the battery safety clip and by sliding it forward until it clicks into place and then replace the battery cover.



6. Turn on the mouse by pressing the power on/off button on the bottom of the mouse. Hold for 3 seconds and then release.



## Targus Bluetooth Comfort Laser Mouse

---

**Power On:**

Press and hold the power button for 3 seconds and then release. The battery life indicator will briefly light up showing the current power level of the batteries.

**Power Off:**

Press and hold the power button for 3 seconds and then release. The battery life indicator will briefly light up and then fade out.

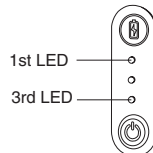
**Battery Check:**

After the mouse is turned on, quickly press and release the power button. The battery life indicator will light up showing the current power level of the batteries.

## Initial Mouse Setup

**Enable Discovery mode:**

The mouse will go into pairing mode automatically after it is powered on. The 1st and 3rd LED will flash alternately for 60 seconds; this indicates that the pairing sequence is in operation. Once the connection is established, the 1st and 3rd LED light will light up steadily for 3 seconds.



If the connection is not established by the end of 60 seconds, the mouse will go into sleep mode. Click on any mouse button to exit from sleep mode. The pairing sequence will re-start automatically.

## Targus Bluetooth Comfort Laser Mouse

---

### **Power Saving mode:**

After an extended period of time, if the mouse is not used, it will automatically enter power saving mode to conserve power and increase battery life. Click on any mouse button to resume the normal operation. The mouse may take a few seconds to re-connect with your computer.

## Battery Life Indicator



3 LEDs lit	Full power
2 LEDs lit	Half power
1 LED lit	Low power



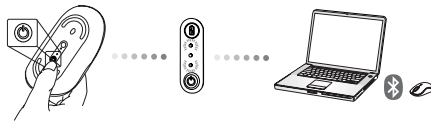
NOTE: WHEN THE FIRST LIGHT IS BLINKING, PLEASE REPLACE THE BATTERIES

## Initial Configuration

Before you can begin using your Bluetooth® mouse, you will first need to perform some initial setup steps.



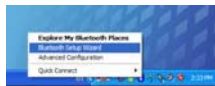
NOTE: PLEASE USE THE LATEST BLUETOOTH DEVICE DRIVER. INSTRUCTION SCREENS MIGHT VARY DEPENDING ON THE VERSION OF YOUR BLUETOOTH DEVICE DRIVER.





## Connecting with Bluetooth Software: WIDCOMM or Microsoft (Windows XP & Windows Vista)

1. Go to the Bluetooth Places icon located on your desktop or in the system tray and double click, then click **Add a Bluetooth Device**.



(Windows XP)



(Windows Vista)

2. The Bluetooth Wizard screen will prompt. Please follow the onscreen instructions.



(Windows XP)

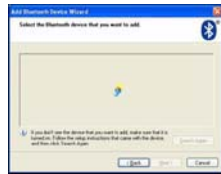


(Windows Vista)

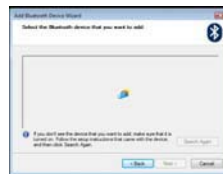
## Targus Bluetooth Comfort Laser Mouse

---

3. Power on the mouse and it will automatically go into discovery mode. Click **Next** to continue pairing and the computer will search for the mouse.

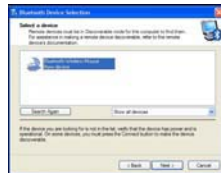


(Windows XP)



(Windows Vista)

4. The confirmation window will appear after the computer finishes detecting the Bluetooth devices. Select the Bluetooth Wireless Mouse and click **Next** to continue. (There may be one or more different Bluetooth devices detected.) If the mouse is not detected, please make sure the power is on and in discovery mode. Press **Search Again** to re-pair the device.



(Windows XP)



(Windows Vista)

## Targus Bluetooth Comfort Laser Mouse

---

5. After selecting the correct device, the computer will finish establishing the connection. Please wait until the setup is completed.



(Windows XP)



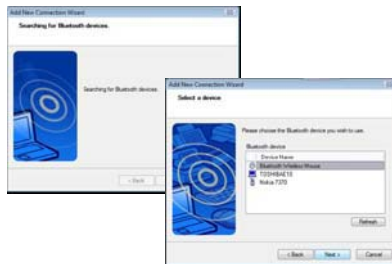
(Windows Vista)



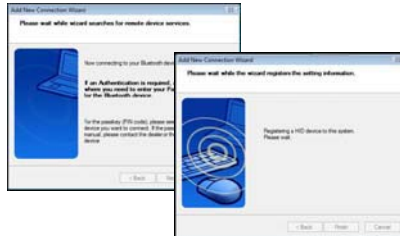
## Targus Bluetooth Comfort Laser Mouse

---

3. The computer will now search for the Bluetooth mouse and other Bluetooth devices. Please wait until the search is completed. Choose the device you wish to connect. There may be more than one Bluetooth device detected. Select Bluetooth Wireless Mouse and click **Next** to continue. If the mouse is not detected, please make sure the mouse is in discovery mode and click **Refresh**.



4. The computer will begin connecting with the device.



## Targus Bluetooth Comfort Laser Mouse

---

5. The connection is established and setup is complete. The device is ready to use. If the connection is not successful, please click **Back** and search the device again. You can continue to add other Bluetooth devices or close the window.



## Bluetooth Software: Mac

1. Go to the Bluetooth icon located on your desktop or in the system bar and click the icon to begin setup. Select "Turn Bluetooth On" to activate the Bluetooth function on your Mac.



2. Scroll down the list and select "Set up Bluetooth Device..."



3. The Bluetooth Setup Assistant will begin. Please follow the on-screen instructions.



## Targus Bluetooth Comfort Laser Mouse

---

4. Select "mouse" and click continue to proceed with setup. Your mouse will need to be in "discovery" mode to connect. Power on the mouse and it will automatically go into discovery mode.



5. Your computer will begin to search for the mouse. Once the mouse is found, it will show up in the list. Highlight your mouse and press continue.





## Targus Bluetooth Comfort Laser Mouse

---

6. The Bluetooth mouse will now begin pairing. Click continue to proceed.



7. Congratulations. Your Bluetooth mouse is setup and ready to use. You can choose to setup another device or click Quit to exit setup.

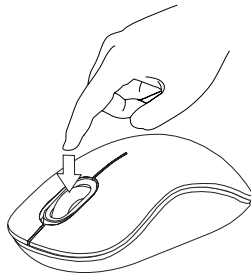


## Programming Your Mouse (Windows Only)

To access the advanced scroll wheel features you will need to download and install the software driver. This can be downloaded from the following location:

Visit [www.targus.com](http://www.targus.com) to download and install the driver.

Once installation is complete, open the driver software and select the desired setting for the scroll-wheel button. Close the driver software application and you're ready to go. Activate your selected feature by pressing down on the scroll wheel.



## Troubleshooting

### **The mouse is not working.**

- Make sure that the polarity of the batteries is correct. The positive (+) and negative (-) ends of each battery must match the positive (+) and negative (-) connections in the battery housing.
- Make sure the batteries are charged. Recharge or replace if necessary.
- Verify that the computer is Bluetooth enabled.
- Verify that the device drivers are installed:
  1. Click **Start/ Settings/ Control Panel/ System/ Hardware/ Device Manager**
  2. Check under "Bluetooth Devices" that a "Soft-Touch Bluetooth" is installed
- Paired devices are always displayed in My Bluetooth Places, even if the mouse is out of range or not powered up.

## Technical Support

For technical questions, please visit:

**US**

Internet: [www.targus.com/support.asp](http://www.targus.com/support.asp)

**Australia**

Internet: [www.targus.com/au](http://www.targus.com/au)

Email: [infoaust@targus.com](mailto:infoaust@targus.com)

Telephone: 1800-641-645

**New Zealand**

Telephone: 0800-633-222

## Product Registration

Targus recommends that you register your Targus accessory shortly after purchasing it. Go to:

<http://www.targus.com/registration.asp>

You will need to provide your full name, email address, country of residence and product information.

## Warranty

Targus warrants this product to be free from defects in materials and workmanship for one year. If your Targus accessory is found to be defective within that time, we will promptly repair or replace it. This warranty does not cover accidental damage, wear and tear, or consequential or incidental loss. Under no conditions is Targus liable for loss of, or damage to devices; nor loss of, or damage to, programs, records, or data; nor any consequential or incidental damages, even if Targus has been informed of their possibility. This warranty does not affect your statutory rights.

## Regulatory Compliance

This device complies with Part 15 of the FCC Rules. Operation is subject to the following two conditions: (1) This device may not cause harmful interference, and (2) This device must accept any interference received, including interference that may cause undesired operation.

---

**FCC Statement**

This equipment has been tested and found to comply with the limits for a Class B digital device, pursuant to part 15 of the FCC rules. These limits are designed to provide reasonable protection against harmful interference in a residential installation. This equipment generates, uses and can radiate radio frequency energy and, if not installed and used in accordance with the instructions, may cause harmful interference to radio communications. However, there is no guarantee that interference will not occur in a particular installation. If this equipment does cause harmful interference

to radio or television reception, which can be determined by turning the equipment off and on, the user is encouraged to try to correct the interference by one or more of the following measures:

- Reorient or relocate the receiving antenna.
- Increase the separation between the equipment and receiver.
- Connect the equipment into an outlet on a circuit different from that to which the receiver is connected.
- Consult the dealer or an experienced radio/TV technician for help.

To assure continued compliance, any changes or modifications not expressly approved by the party responsible for compliance could void the user's authority to operate this equipment. (Example- use only shielded interface cables when connecting to computer or peripheral devices).

**FCC Radiation Exposure Statement**

This equipment complies with FCC radiation exposure limits set forth for an uncontrolled environment and it also complies with Part 15 of FCC RF Rules. Operation is subject to the following two conditions:

- 1) This device may not cause interference and
- 2) This device must accept any interference, including interference that may cause undesired operation of the device.

**Caution!**

The manufacturer is not responsible for any radio or TV interference caused by unauthorized modifications to this equipment. Such modifications could void the user authority to operate the equipment.

**Canada Statement**

This Device complies with RSS-210 of the IC Rules, Operation is subject to the following two conditions:

- (1). This device may not cause interference and
- (2). This device must accept any interference received,, including interference that may cause undesired operation.

**Declaration of Conformity**

Hereby, Targus, declares that this device is in compliance with the essential requirements and other relevant provisions of Directive 1999/5/EC.

Targus Bluetooth Comfort Laser Mouse

---



**CAUTION**

LASER RADIATION. DO NOT STARE INTO THE BEAM OR VIEW DIRECTLY WITH OPTICAL INSTRUMENTS. CLASS I LASER PRODUCT.  
NEVER POINT A LASER BEAM INTO A PERSON'S EYES OR VIEW A LASER BEAM DIRECTLY, AS PROLONGED EXPOSURE CAN BE HAZARDOUS TO THE EYES.  
MOMENTARY EXPOSURE FROM A LASER POINTER, SUCH AS AN INADVERTENT SWEEP OF THE LIGHT ACROSS A PERSON'S EYES, MAY CAUSE TEMPORARY FLASH BLINDNESS SIMILAR TO THE EFFECT OF A CAMERA FLASH BULB. ALTHOUGH THIS CONDITION IS TEMPORARY, IT CAN BECOME MORE DANGEROUS IF THE EXPOSED PERSON IS ENGAGED IN A VISION-CRITICAL ACTIVITY SUCH AS DRIVING.



410-1690-0014 / AM609US

1 YEAR LIMITED WARRANTY: We pride ourselves on the quality of our products. For complete warranty details and a list of our worldwide offices, please visit [www.targus.com](http://www.targus.com). Features and specifications are subject to change without notice. All trademarks and registered trademarks are the property of their respective owners. All rights reserved. ©2009 Manufactured or imported by Targus Group International, Inc. (for U.S. sales: 1211 North Miller Street, Anaheim, CA 92806 USA) whose Australian sales representative is Targus Australia Pty. Ltd., 117-119 Bowden Street, Meadowbank, NSW 2114 Australia



QD ID : B012764