

Using the Mouse


- Remove the USB receiver from the bottom of the mouse.
- Plug the USB receiver into an available USB port on your computer.
- Press the Connect Button on the bottom of the mouse. You are now ready to use the mouse.


System Requirements

- Hardware - USB port
- Windows® 2000/ XP/ 7
- Windows Vista®
- Mac OS® X 10.4 (or later)

Installing the Batteries

- 1 Remove the battery cover from the back of the mouse.
- 2 Insert the supplied batteries, making sure that the positive (+) and negative (-) ends of each battery match the polarity indicators inside the battery housing.
- 3 Replace the battery cover into position until it "clicks" firmly into place.

 NOTE: YOU MUST ESTABLISH A CONNECTION LINK EVERY TIME YOU CHANGE THE BATTERIES.

 WARNINGS: WHEN REPLACING THE BATTERIES, YOU MAY USE ALKALINE OR OTHER HEAVY-DUTY NIMH BATTERIES. NEVER USE AN ALKALINE WITH A NIMH BATTERY IN A DEVICE. AVOID MIXING NEW AND USED BATTERIES IN A DEVICE.

Power On:


Slide the power button to ON position.

Power Off:

Slide the button to OFF position.


Power Saving Mode:

After an extended period of time, if the mouse is not used, it will automatically enter power saving mode to conserve power and increase battery life. Click on any mouse button to resume the normal operation. The mouse may take a few seconds to reconnect with your computer.

 NOTE: TO EXTEND THE LIFE OF YOUR BATTERY, TURN OFF THE MOUSE WHILE TRAVELLING OR WHEN YOU'RE NOT USING IT.

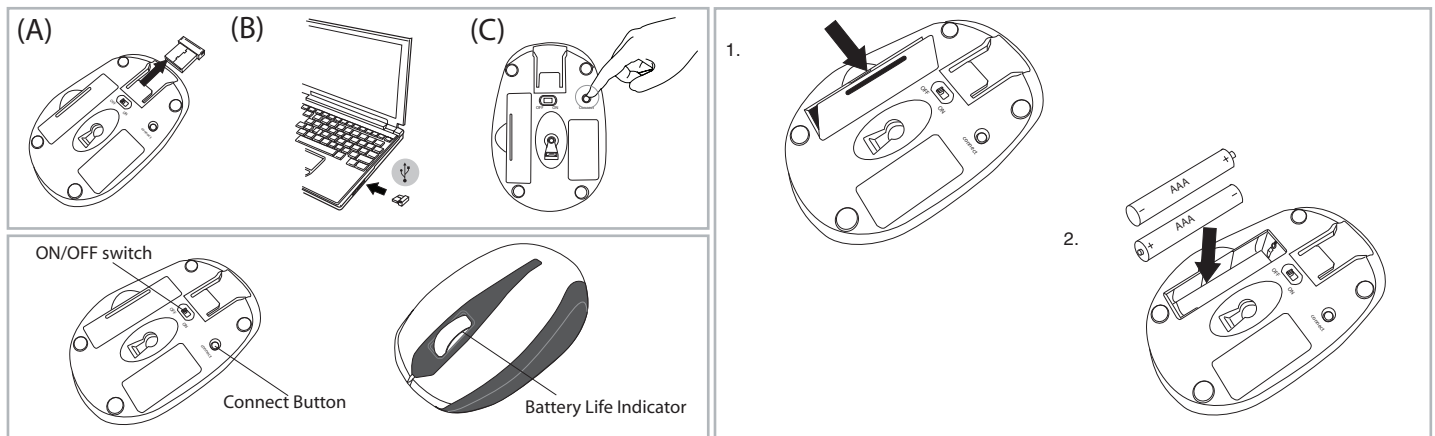
Safety Measures

Never point the optical sensor toward the face, particularly the eyes, to avoid possible injury.

 NOTE: WHILE THE MOUSE IS FUNCTIONING, OPTICAL LIGHT IS VISIBLE TO THE NAKED EYE. BE CAREFUL NOT TO LOOK DIRECTLY INTO THE EMITTER HOLE WHILE THE MOUSE IS ACTIVE.

Battery Life Indicator

The low power light will start flashing when less than 5% of the battery power remains. Replace the batteries as soon as possible.



Technical Support

For technical questions, please visit:

US

Internet: www.targus.com/support.asp

Australia

Internet: www.targus.com/au
Email: infoaust@targus.com
Telephone: 1800-641-645

New Zealand

Telephone: 0800-633-222

Product Registration

Targus recommends that you register your Targus accessory shortly after purchasing it.

Go to: <http://www.targus.com/registration.asp>

You will need to provide your full name, email address, phone number, and company information (if applicable).

Warranty

Targus warrants this product to be free from defects in materials and workmanship for one year. If your Targus accessory is found to be defective within that time, we will promptly repair or replace it. This warranty does not cover accidental damage, wear and tear, or consequential or incidental loss. Under no conditions is Targus liable for loss of, or damage to a computer; nor loss of, or damage to, programs, records, or data; nor any consequential or incidental damages, even if Targus has been informed of their possibility. This warranty does not affect your statutory rights.

Regulatory Compliance

This device complies with Part 15 of the FCC Rules. Operation is subject to the following two conditions: (1) This device may not cause harmful interference, and (2) This device must accept any interference received, including interference that may cause undesired operation.

FCC Statement Tested to Comply

This equipment has been tested and found to comply with the limits of a Class B digital device, pursuant to Part 15 of the FCC Rules. These limits are designed to provide reasonable protection against harmful interference in a residential installation. This equipment generates, uses, and can radiate radio frequency energy and if not installed and used in accordance with the instructions, may cause harmful interference to radio communications. However, there is no guarantee that interference will not occur in a particular installation. If this equipment does cause harmful interference to radio or television reception, which can be determined by turning the equipment off and on, the user is encouraged to try to correct the interference by one or more of the following measures:

- Reorient or relocate the receiving antenna;
 - Increase the separation between the equipment and receiver;
 - Connect the equipment into an outlet on a circuit different from that to which the receiver is connected;
 - Consult the dealer or an experienced radio/TV technician for help.
- Changes or modifications not authorized by the party responsible for compliance could void the user's authority to operate this product.