

Targus®

BLUETRACE

WIRELESS MOUSE

BLUETRACE

WIRELESS MOUSE RECEIVER

BLUETRACE

SOURIS SANS FIL

BLUETRACE

SOURIS SANS FIL RECEPTEUR

User Guide

Manuel de l'utilisateur

1 YEAR LIMITED WARRANTY: We pride ourselves on the quality of our products. For complete warranty details and a list of our worldwide offices, please visit www.targus.com. Features and specifications are subject to change without notice. Microsoft, Windows and Windows Vista are registered trademarks or trademarks of Microsoft Corporation in the United States and/or other countries. Mac is a trademark of Apple Inc., registered in the U.S. and other countries. Logitech is a registered trademark of Logitech International in the United States and other countries. All trademarks and registered trademarks are the property of their respective owners. ©2013 Targus Group International, Inc. All rights reserved.

GARANTIE LIMITÉE D'UN AN : Nous sommes fiers de la qualité de nos produits. Pour les détails complets sur la garantie et une liste de nos bureaux à travers le monde, veuillez visiter www.targus.com. Les fonctions et les spécifications peuvent être modifiées sans préavis. Microsoft, Windows et Windows Vista sont des marques déposées ou des marques de commerce de Microsoft Corporation aux Etats-Unis et dans d'autres pays. Mac est une marque déposée d'Apple Inc. aux Etats-Unis et dans d'autres pays. Logitech est une marque déposée de Logitech International aux Etats-Unis et dans d'autres pays. Toutes les marques de commerce et les marques déposées sont la propriété exclusive de leurs propriétaires respectifs. ©2013 Targus Group International, Inc. Tous droits réservés.



Targus Blue Trace Wireless Mouse

Introduction

Thank you for your purchase of the Targus Blue Trace Wireless Mouse. The USB receiver conveniently attaches to the mouse for ease of use while traveling or on the go. This is a plug and play device so no additional software is required.

Contents

- Targus Blue Trace Wireless Mouse
- AA Battery
- Micro USB Receiver
- User Guide

System Requirements

Hardware

- USB port

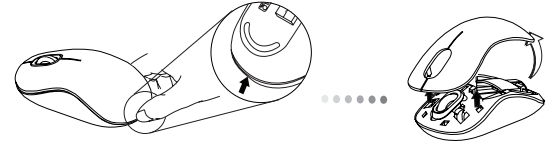
Operating System

- Microsoft Windows® 7
- Microsoft Windows® 8
- Microsoft Windows® 8.1
- Mac OS® X v10.4 to 10.9

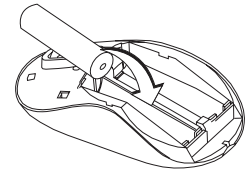
Targus Blue Trace Wireless Mouse

Installing the Batteries

1. Remove the battery cover from the top of the mouse by using the notch on the back. Carefully lift the cover up as shown in the diagram.

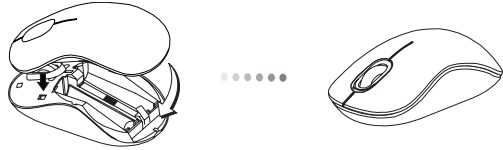


2. Insert the AA battery, making sure that the positive (+) and negative (-) ends of each battery match the polarity indicators inside the battery compartment.



Diecut
Color: Grayscale
Material: 80gsm woodfree paper
Open size: 9"W x 4.5"H
Folded Size: 4.5"W x 4.5"H

Targus Blue Trace Wireless Mouse



3. Replace the battery cover, carefully fit the cover until it clicks into place.

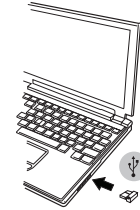
Establishing the Connection

(A) Remove the USB receiver from the bottom of the mouse.



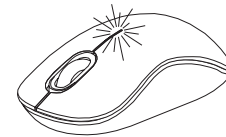
Targus Blue Trace Wireless Mouse

(B) Plug the USB receiver into an available USB port on your computer.



(C) This mouse is a plug and play device. It will automatically operate when the USB receiver is connected to the computer.

Low Battery Power Indicator



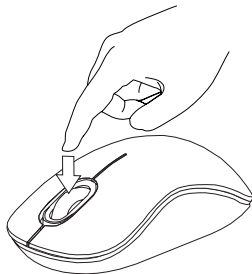
The light illuminates from the seam between the left and right buttons. It will turn on when the power is low and batteries need to be replaced.

Programming Your Mouse (Optional) (Windows Only)

To access the advanced scroll wheel features you will need to download and install the software driver. This can be downloaded from the following location:

Visit www.targus.com to download and install the driver.

Once installation is complete, open the driver software and select the desired setting for the scroll-wheel button. Close the driver software application and you're ready to go. Activate your selected feature by pressing down on the scroll wheel.



Technical Support

For technical questions, please visit:
Internet: www.targus.com/support.asp
Email: info.cn@targus.com

Product Registration

Targus recommends that you register your Targus accessory shortly after purchasing it.
Go to: <http://www.targus.com/registration.asp>

You will need to provide your full name, email address, country of residence and product information.

Warranty

Targus warrants this product to be free from defects in materials and workmanship for one year. If your Targus accessory is found to be defective within that time, we will promptly repair or replace it. This warranty does not cover accidental damage, wear and tear, or consequential or incidental loss. Under no conditions is Targus liable for loss of, or damage to devices; nor loss of, or damage to, programs, records, or data; nor any consequential or incidental damages, even if Targus has been informed of their possibility. This warranty does not affect your statutory rights.

Regulatory Compliance

This device complies with Part 15 of the FCC Rules. Operation is subject to the following two conditions: (1) This device may not cause harmful interference, and (2) This device must accept any interference received, including interference that may cause undesired operation.