

---

## Contents

---

Software License Agreement.....	2
Conventions used in this manual .....	3
Operating environment .....	3
Installing the software (Windows) .....	3
Installing the software (Mac) .....	4
Connecting the DR-22WL/DR-44WL to the computer by Wi-Fi for the first time.....	5
Connecting a DR-22WL/DR-44WL and a computer by Wi-Fi (after the first time) .....	6
TASCAM DR FILE TRANSFER HOME screen .....	6
Transferring from the DR unit to the computer .....	7
Responding to an error message .....	8

## Software License Agreement

END-USER LICENSE AGREEMENT FOR APPLICATION SOFTWARE ATTACHED TO TEAC PRODUCTS

### IMPORTANT - READ CAREFULLY:

This End-User License Agreement is a legal agreement between you (either an individual or a single entity) and TEAC Corporation ("TEAC") for the software identified above, which includes computer software and associated media and printed materials (if any), and may include online or electronic documentation (hereinafter referred to as SOFTWARE). By installing, copying, or otherwise using the SOFTWARE, you agree to be bound by the terms of this Agreement. If you do not agree to the terms of this Agreement, you are not authorized to use the SOFTWARE.

The SOFTWARE is protected by copyright laws and international copyright treaties, as well as other intellectual property laws and treaties. The SOFTWARE is licensed, not sold.

#### 1 GRANT OF LICENSE.

This Agreement grants you the following rights:

Use and Copy. TEAC grants to you the right to use copies of the SOFTWARE only for TEAC PRODUCTS you have. You may also make a copy of the SOFTWARE for backup and archival purposes.

#### 2 RESTRICTIONS.

You may not distribute copies of the SOFTWARE to third parties.

You may not rent or lease the SOFTWARE.

#### 3 TERMINATION.

Your rights under this Agreement terminate upon the disposal of your TEAC PRODUCTS, or without prejudice to any other rights, TEAC may terminate this Agreement if you fail to comply with the terms and conditions of this Agreement. In such event, you must destroy all copies of the SOFTWARE.

#### 4 COPYRIGHT.

All title and copyrights in and to the SOFTWARE and any copies thereof are owned by TEAC or its suppliers. All title and intellectual property rights in and to the content which may be accessed through use of the SOFTWARE is the property of the respective content owner and may be protected by applicable copyright or other intellectual property laws and treaties. This Agreement grants you no rights to use such content.

#### 5 NO WARRANTY.

ANY USE OF THE SOFTWARE IS AT YOUR OWN RISK. THE SOFTWARE IS PROVIDED FOR USE ONLY FOR TEAC PRODUCTS. TO THE MAXIMUM EXTENT PERMITTED BY APPLICABLE LAW, TEAC AND ITS SUPPLIERS DISCLAIM ALL WARRANTIES AND CONDITIONS, EITHER EXPRESS OR IMPLIED, INCLUDING, BUT NOT LIMITED TO, IMPLIED WARRANTIES OF MERCHANTABILITY, FITNESS FOR A PARTICULAR PURPOSE, AND NONINFRINGEMENT.

#### 6 NO LIABILITY FOR CONSEQUENTIAL DAMAGES.

TO THE MAXIMUM EXTENT PERMITTED BY APPLICABLE LAW, IN NO EVENT SHALL TEAC OR ITS SUPPLIERS BE LIABLE FOR ANY SPECIAL INCIDENTAL, INDIRECT, OR CONSEQUENTIAL DAMAGES WHATSOEVER (INCLUDING, WITHOUT LIMITATION, DAMAGES FOR LOSS OF BUSINESS PROFITS, BUSINESS INTERRUPTION, LOSS OF BUSINESS INFORMATION, OR ANY OTHER PECUNIARY LOSS) ARISING OUT OF THE USE OF OR INABILITY TO USE THE SOFTWARE, EVEN IF TEAC HAS BEEN ADVISED OF THE POSSIBILITY OF SUCH DAMAGES.

#### 7 LIMITATION OF LIABILITY.

TEAC'S ENTIRE LIABILITY AND YOUR EXCLUSIVE REMEDY UNDER THIS AGREEMENT SHALL NOT EXCEED THE PRICE YOU PAID FOR TEAC PRODUCTS. BECAUSE SOME COUNTRY AND JURISDICTIONS DO NOT ALLOW THE EXCLUSION OR LIMITATION OF LIABILITY FOR CONSEQUENTIAL OR INCIDENTAL DAMAGES, THE ABOVE LIMITATION MAY NOT APPLY TO YOU.

#### 8 MISCELLANEOUS.

This Agreement is governed by the laws of Japan.

### NOTICE

The reproduction and use of copyrighted materials such as music, images, computer programs and databases are limited by the copyright and other laws or by the license agreement made by and between the copyright holders and users. Before making a reproduction of such materials, check their conditions of use and use this product without infringing the copyrights or other intellectual property rights. TEAC has no responsibility for copyright infringement as a result of reproductions of copyrighted works made by users of this product.

### NOTE

Any data, including, but not limited to information, described herein are intended only as illustrations of such data and/or information and not as the specifications for such data and/or information. TEAC CORPORATION disclaims any warranty that any use of such data and/or information shall be free from infringement of any third party's intellectual property rights or other proprietary rights, and further, assumes no liability of whatsoever nature in the event of any such infringement, or arising from or connected with or related to the use of such data and/or information.

## Conventions used in this manual

The following conventions are used in this manual.

- Information shown on the computer display is written like this: "OK".
- Additional information is provided as necessary in notes.

### NOTE

*These provide additional explanations and describe special cases.*

## Operating environment

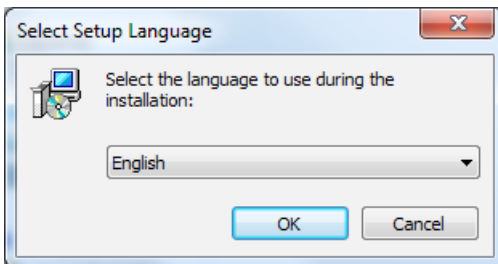
Supported operating systems

- Windows 7, Windows 8 (including 8.1)
- Mac OS X 10.7 or newer  
(Internet connection is also necessary)

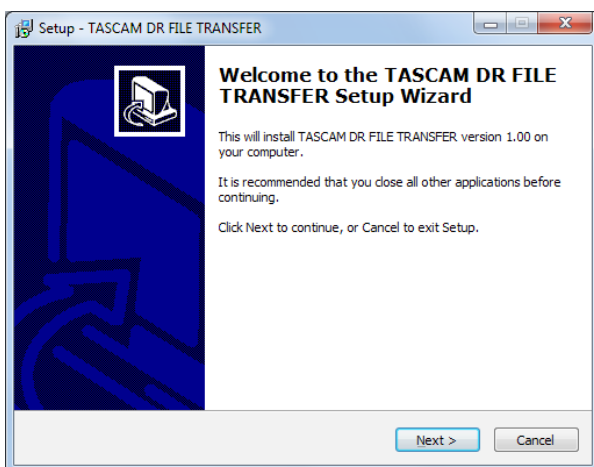
## Installing the software (Windows)

1. Connect the computer you are using to the Internet.
2. Download the **TASCAM DR FILE TRANSFER** application from the TEAC Global Site (<http://teac-global.com>).
- Be aware that data charges related to using the Internet connection are your responsibility.
3. After downloading, double-click "**TASCAM DR FILE TRANSFER.exe**" to launch the installer.

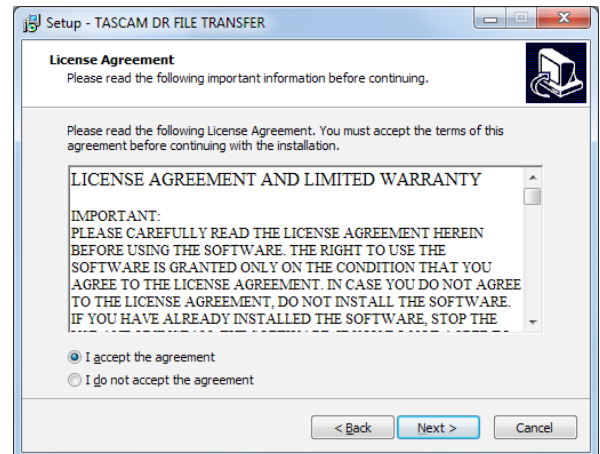
When the installer language selection screen opens, select the language you want and click the "OK" button.



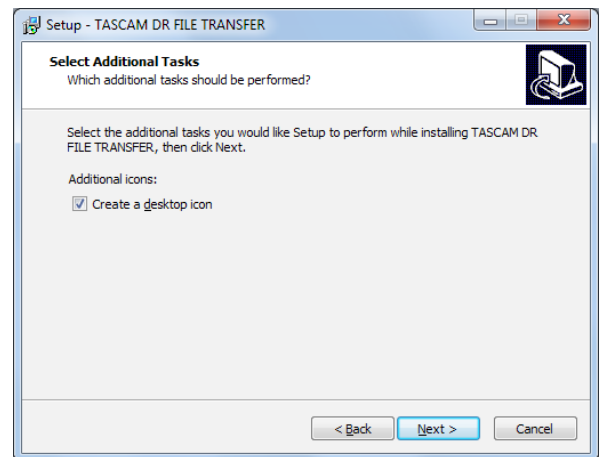
4. When the first screen of the installer appears, click the "**Next >**" button to continue.



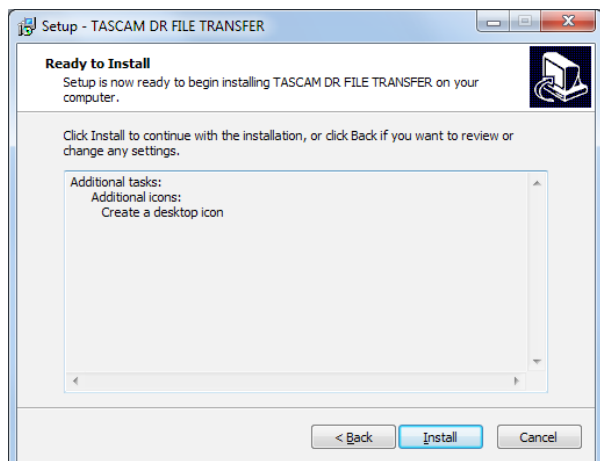
5. The software license agreement screen opens. Select "**I accept the agreement**" to agree to the license, and click "**Next >**" to continue.



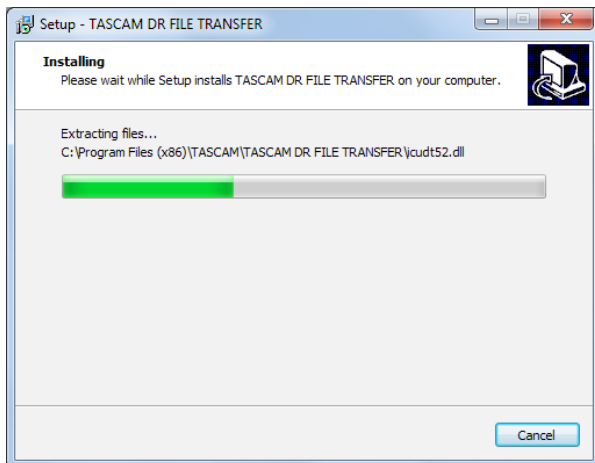
6. The shortcut creation screen opens. Put a check in the box next to "**Create a desktop icon**" to create a shortcut on the desktop, and click "**Next >**" to continue.



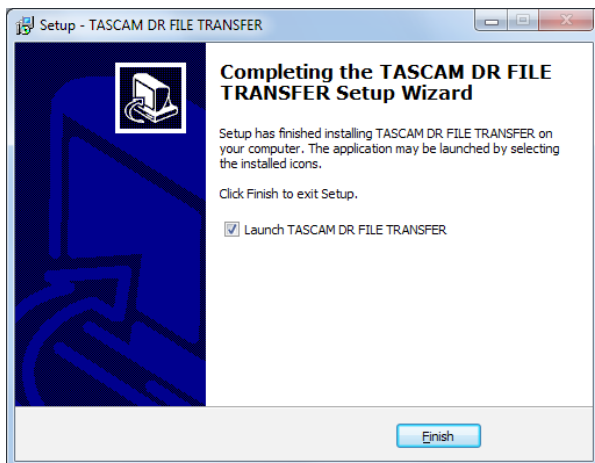
7. The installation confirmation screen opens. Confirm the installation details, and click the "**Install**" button.



- The installation progress screen opens.  
To cancel installation at this time, click the **“Cancel”** button.



- The installation completion screen opens.  
To launch **TASCAM DR FILE TRANSFER** immediately, click the **“Finish”** button.  
To launch **TASCAM DR FILE TRANSFER** later, remove the check from the box next to **“Launch TASCAM DR FILE TRANSFER”**, and then click the **“Finish”** button.



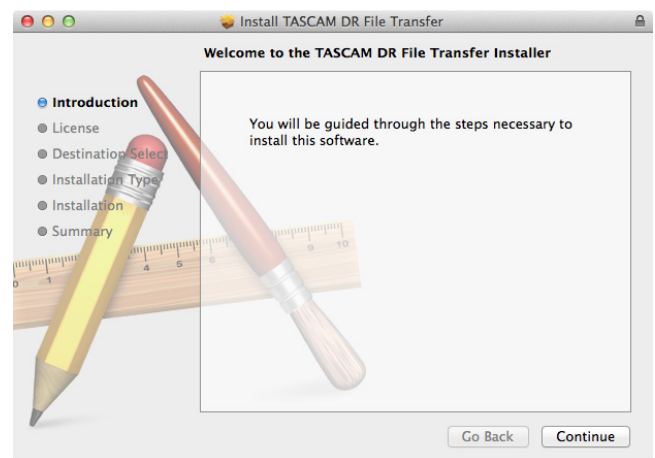
This completes installation of the software.

## Installing the software (Mac)

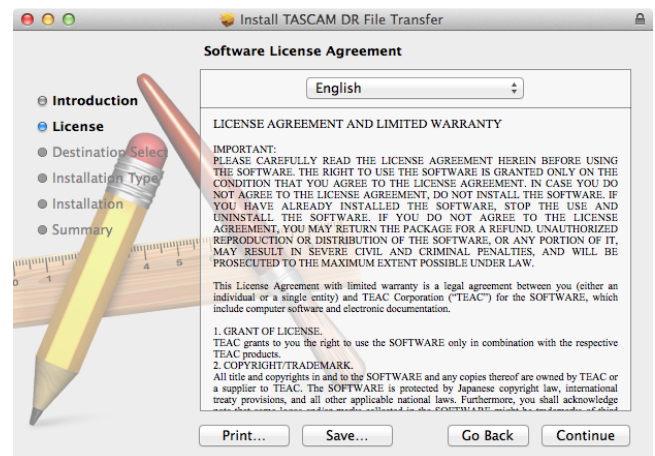
- Connect the computer you are using to the Internet.
- Download the **TASCAM DR FILE TRANSFER** application from the TEAC Global Site (<http://teac-global.com>) and save it on the computer you are using.
  - Be aware that transmission charges related to using the Internet connection are your responsibility.
- Double-click **“TascamDrFileTransfer\_1.00.dmg”** (the **TASCAM DR FILE TRANSFER** disk image file), and double-click **“TascamDrFileTransfer.pkg”** inside the folder that opens.



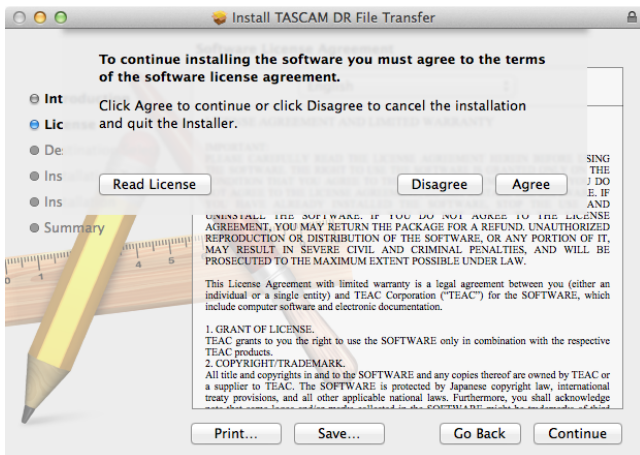
- When the installer starts, click the **“Continue”** button.



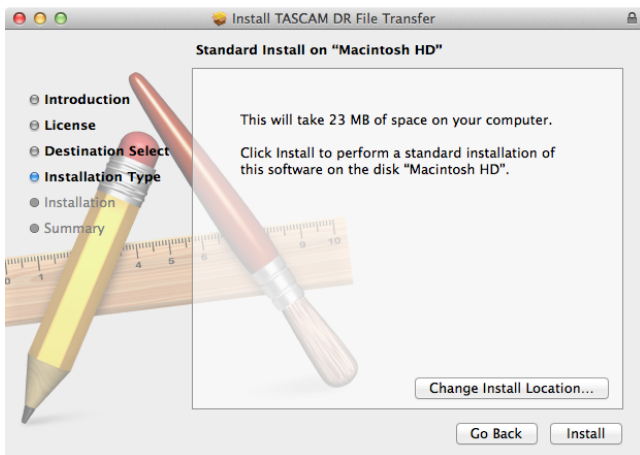
- After confirming the contents of the end user license agreement, click the **“Continue”** button.



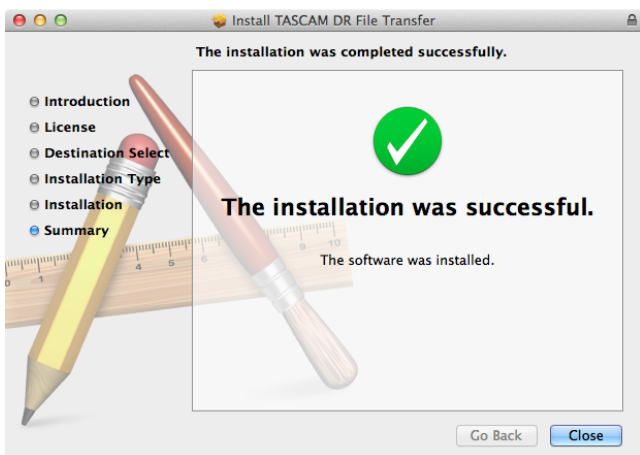
- If you agree to the contents of the license, click **"Agree"**. If you want to read the end user license agreement again, click the **"Read License"** button.



- Next, click the **"Install"** button to start installation. To change the installation destination, select the **"Change install Location..."** button.



- The following screen appears when installation has completed. Click the **"Close"** button.



This completes installation of the software.

## Connecting the DR-22WL/DR-44WL to the computer by Wi-Fi for the first time

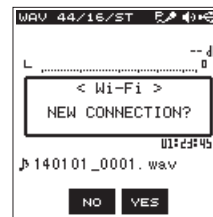
Since the Wi-Fi connection between the DR-22WL/DR-44WL (hereafter, "DR unit") and the computer is direct, there is no need for a Wi-Fi router or other external equipment, nor for a Wi-Fi network.

The DR unit and the computer can be connected without anything else.

### NOTE

*When the DR unit and the computer are connected by Wi-Fi, the computer cannot be connected to other Wi-Fi networks.*

- Press the **Wi-Fi** button on the DR unit. The **Wi-Fi** indicator blinks. A **"NEW CONNECTION?"** pop-up message appears to confirm whether or not it is a new connection.
- Since this is the first time connecting, press the **F3** **YES** button on a DR-22WL or the **ENTER/MARK (YES)** button on a DR-44WL.

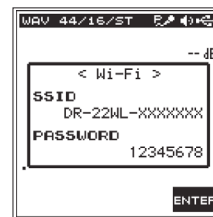


DR-22WL

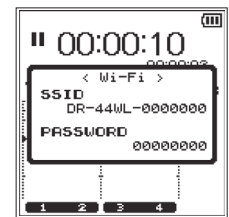


DR-44WL

- The **SSID** and a **password** appear on the display.



DR-22WL

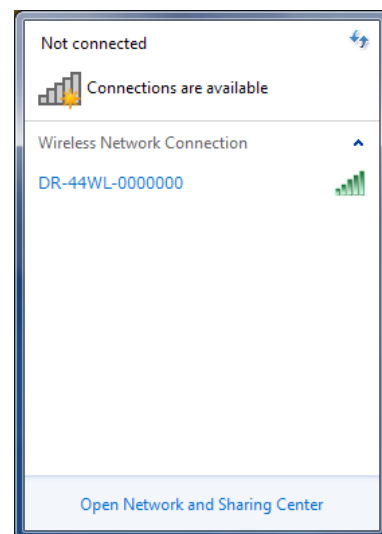


DR-44WL

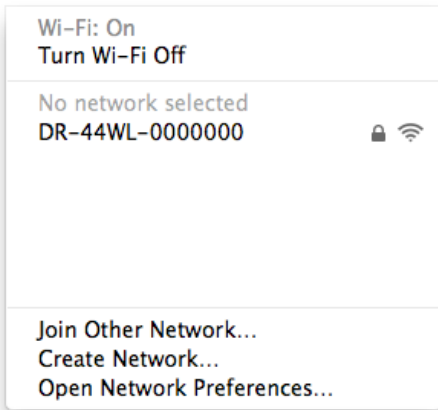
### NOTE

*The SSID is the name of the wireless LAN access point (wireless LAN device).*

- Click the wireless connection icon in the computer task bar (Windows) or menu bar (Mac) to open a list of wireless networks.

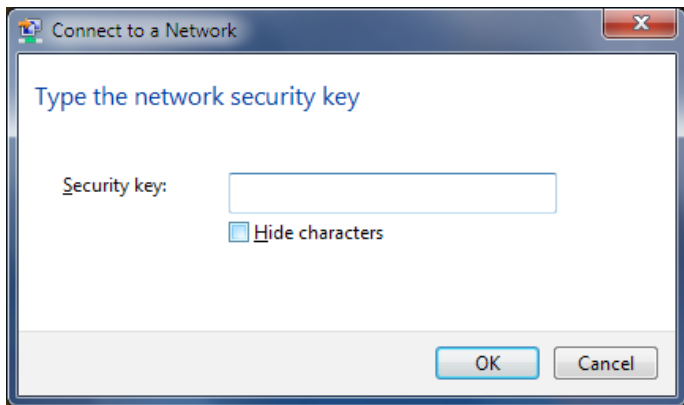


On Windows



On Mac

5. Select the **SSID** shown on the display of the DR unit.
6. When the Security Key input screen appears on the computer, input the **password** shown on the DR unit.



On Windows

When the password input screen appears on the computer, input the **password** shown on the DR unit.



On Mac

7. A Wi-Fi connection will be established between the DR unit and the computer and the **Wi-Fi** indicator on the DR unit will light.

## Connecting a DR-22WL/DR-44WL and a computer by Wi-Fi (after the first time)

After a DR unit and a computer have been connected once, they can be connected again by just selecting the **SSID**.

1. Press the **Wi-Fi** button on the DR unit. The **Wi-Fi** indicator blinks. A **"NEW CONNECTION?"** pop-up message appears to confirm whether or not it is a new connection.
2. Since this computer has been connected previously, press the **F2** **NO** button on a DR-22WL or the **■/HOME (NO)** button on a DR-44WL.



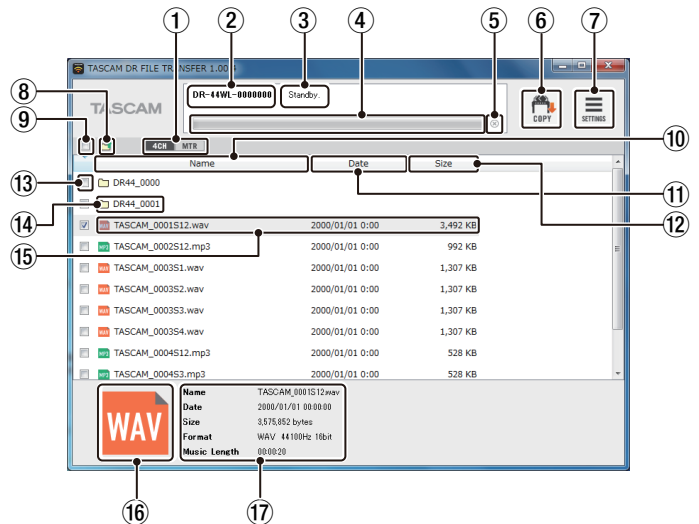
DR-22WL



DR-44WL

3. The pop-up message on the display disappears and the unit is ready to connect with the computer.
4. Click the wireless connection icon in the computer task bar (Windows) or menu bar (Mac) to open a list of wireless networks.
5. Select the **SSID** shown on the display of the DR unit.
6. A Wi-Fi connection will be established between the DR unit and the computer and the **Wi-Fi** indicator on the DR unit will light.

## TASCAM DR FILE TRANSFER HOME screen



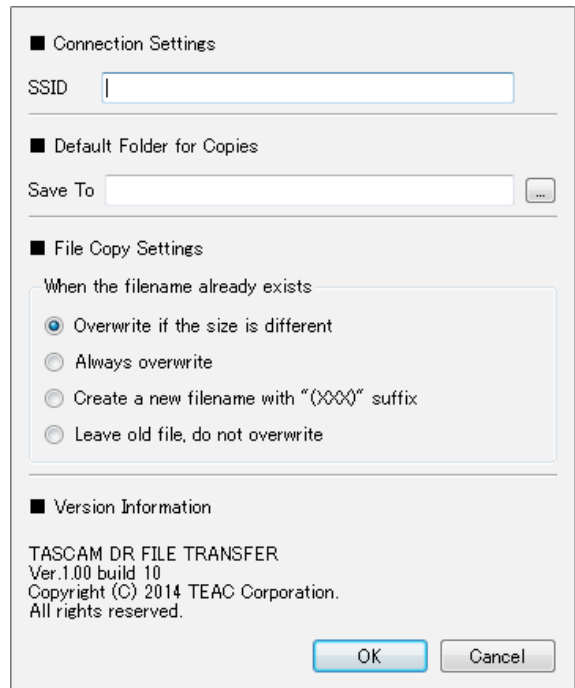
- ① **4CH/MTR mode switch (DR-44WL only)**  
Use this to switch the DR unit mode. Files from different modes cannot be shown at the same time. In MTR Mode, only audio files that have been mixed down are shown.
- ② **SSID**  
This shows the SSID input in **SETTINGS**.
- ③ **Status display**  
This shows the status of the application.
- ④ **Progress bar**  
During file transfer, this shows the transfer progress.
- ⑤ **Cancel transfer button**  
During file transfer, click this to cancel the transfer. If transfer is canceled, the files will not be saved on the computer.



- ⑥ **COPY button**  
Checked files will be transferred to the computer.  
Folders cannot be transferred even if they are checked.
- ⑦ **SETTINGS button**  
Click this to show the SSID input and file saving settings.
- ⑧ **Move to new directory**  
Move to the previous folder.
- ⑨ **Check all button**  
Click to check/uncheck all the files that are shown.
- ⑩ **Name button**  
Click to reorder the files in name ascending/descending order.
- ⑪ **Date button**  
Click to reorder the files in date ascending/descending order.
- ⑫ **Size button**  
Click to reorder the files in size ascending/descending order.
- ⑬ **Check buttons**  
Select files for transmission.
- ⑭ **Folders**  
This shows folders on the DR unit.  
Double-click to open the folder.  
These are not shown when there are no folders on the DR unit.
- ⑮ **Audio files**  
This shows files on the DR unit.  
These are not shown when there are no files on the DR unit.
- ⑯ **File format**  
This shows the audio file type as WAV/MP3.
- ⑰ **File details**  
Click a file to show details about it here.
 

Name :	File name
Size :	File size
Date :	Date and time updated
Format :	File format and sampling rate
Music Length :	File time

3. Click the **"SETTINGS"** button at the top right of the screen to open a screen like the following. Input the **SSID** of the DR unit connected by Wi-Fi to the computer, and click the **"OK"** button. (You only need to do this the first time it launches.)  
You can check the **SSID** with the DR unit's **MENU/TOOLS/Wi-Fi** item or the computer Wi-Fi connection screen.



## NOTE

- When using a Windows computer that is part of a workgroup, input ".local" after the **SSID**.  
Example : Enter **"DR-44WL-000000.local"** in the **SSID** field.
- How to check whether or not a Windows computer is part of a workgroup

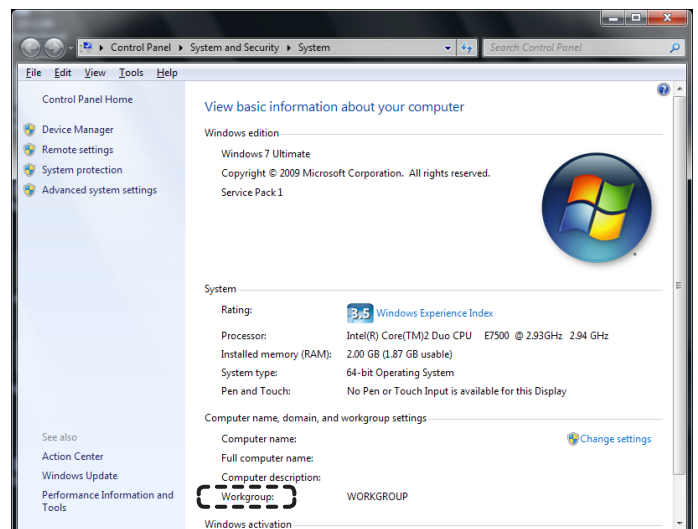
### Using Windows 7

Right-click **"Computer"** in the Start menu and select **"Properties"** to open the following screen.

### Using Windows 8 (including 8.1)

Move the mouse cursor to the bottom left of the desktop screen and right-click to show an options menu. Select **"System"** from this menu to open a screen like the one below.

Windows 7 example



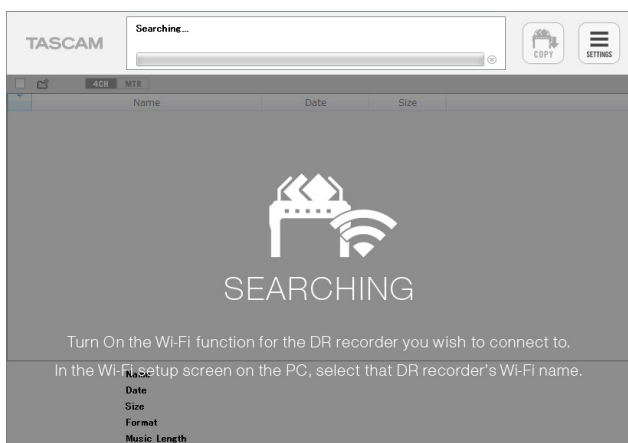
If the area indicated by the dashed line is **"Workgroup"** rather than **"Domain"**, it is part of a workgroup.

## Transferring from the DR unit to the computer

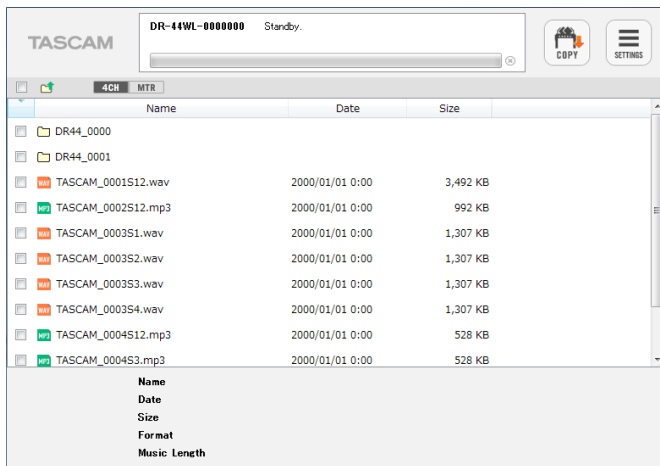
1. Launch the **TASCAM DR FILE TRANSFER** application on the computer you are using.



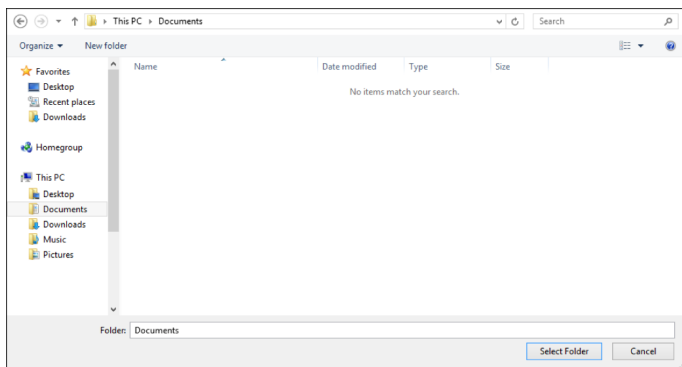
2. When the application launches, a screen like the following will appear on the computer.



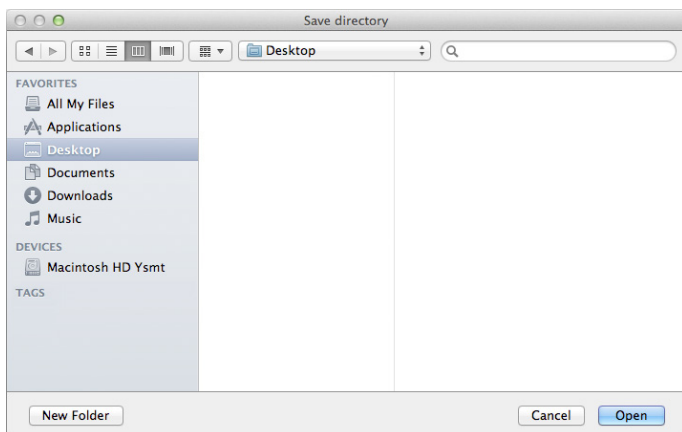
- When the application recognizes the DR unit, a screen like the following will appear, showing a list of the audio files saved on the SD or microSD card in the DR unit.



- After inputting check marks next to the files you want to transfer to the computer, click COPY at the top right of the screen to open a save destination folder selection screen like the following.

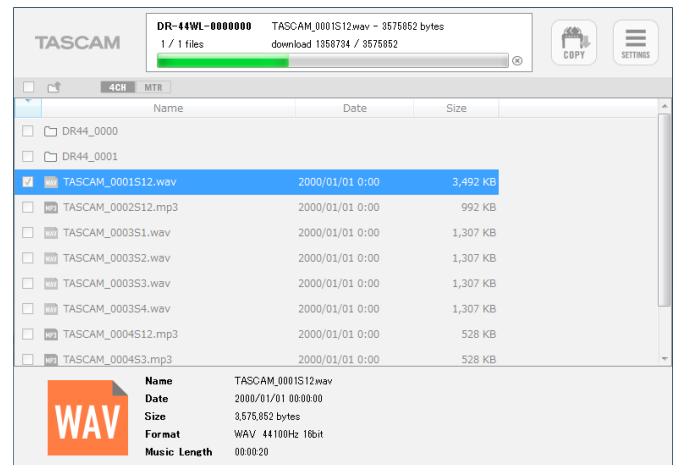


On Windows

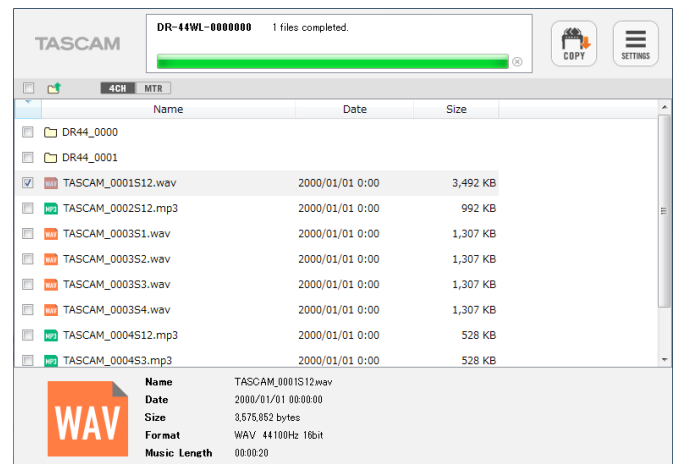


On Mac

- After you select a save destination folder, transfer to the computer will start. No operation is possible until transfer completes or you cancel the transfer by clicking the ⊗ icon to the side of the progress bar.



- Transfer from the DR unit to the computer is complete when the status display shows **"\* files completed."**



This completes file transfer from the DR unit to the computer.

## Responding to an error message

If the following message appears in the status display, quit **TASCAM DR FILE TRANSFER** once and relaunch it

**"An error has occurred. (code : Ex-xx-xx)"**

**Please quit the Application and attempt to re-connect to the DR"**