



**Binatone**

TALK-5193-T

TALK-5193-R

**Wireless**  
Headset TALK-5193

## Wireless Headset TALK-5193

### QUICK START

- Connect headset to USB transmitter dongle with the cable provided. Plug dongle into computer. Headset will start to charge. Before first use, charge headset at least 4 hours
- Turn on headset. Blue light on headset will flash.
- Hold down the LINK button on the dongle. When blue light flashes more quickly press and hold the LINK button on the headset.
- When the blue lights stop flashing and are steady the two devices are linked.

**Binatone**



### WARRANTY CONDITIONS

Our products have a 3 year manufacturer's warranty, which is effective from the date of purchase. If your product is faulty during the warranty period. You can take it back to the dealer you purchased it from and provide them with an explanation of the fault, the proof of purchase and all accessories.

### EXCLUDED FROM THE WARRANTY

- Damage caused by accidents or disasters, such as fire, flood, earthquakes, war, vandalism or theft.
- Incompatibility with other hardware/software which is not stated in the minimum system requirements.
- Under no circumstances will the manufacturer be held responsible for any incidental or consequential damage, including the loss of income or other commercial losses resulting from the use of this product.

### HEADSET & USB TRANSMITTER DONGLE PARTS

- ⓐ **Volume +/- Buttons** Press and hold (+) to increase the headset volume. Press and hold (-) to decrease the headset volume.
- ⓑ **LED Indicator** A blue solid light indicates power on and linked. A blue slow flashing light indicates unlinked. A blue fast flashing light indicates ready for linking.
- ⓒ **Power Button**
- ⓓ **Headset Charger Port**
- ⓔ **Microphone**
- ⓕ **Reset Pin Hole** Press to reset the headset, if this headset it is not functioning properly.
- ⓖ **Dongle Link Button**
- ⓗ **Dongle LED**

### GETTING STARTED

**Charging First time:** Charge for 4 hours before first using the headset. Plug the cable into the headset charger port (ⓓ). Plug dongle into computer USB port.

**Regular use:** Charge the headset for approximately 2 hours if the battery is fully depleted. You are able to use the headset while charging.

**Turn the headset on:** Press the power button. For 3 seconds blue light on headset will flash.

**To link Headset and Dongle:** Hold down the dongle Link Button (ⓖ). When Blue light flashes more quickly press and hold the power button (ⓒ) for 5 seconds. When the blue lights stop flashing and are steady the two devices are linked.

### TROUBLESHOOTING

#### No signal received

- Make sure the headset is charged and the dongle is properly connected to the computer.
- Ensure the headset is within the range of the transmitter signal coverage.
- Try turning power off and on again.

#### The headset automatically switches off

- The battery power is too low.

#### No sound/you can't hear

- Check the headset and the computer volume control. Make sure they are not at the lowest volume level or muted.
- Check the Link status of the dongle and the headset. Make sure the two devices are linked properly.
- Check if the computer Media Player is

properly installed, and that an audio file is playable.

#### You can't be heard

- Check to make sure that the microphone is not muted.

#### Unexpected behaviour/ If all else fails

- Headset can be reset by inserting the end of a paperclip into the Reset Pin Hole (ⓕ)

### IMPORTANT USER INFORMATION

#### Handling the headset

- Do not bend, drop, crush, puncture, incinerate or open the headset.

#### Repairing the headset

- Never attempt to repair the headset yourself. The headset does not contain any user serviceable parts.

- The rechargeable battery in the headset cannot be replaced.

#### Unplug the USB charging cable if any of the following conditions exist

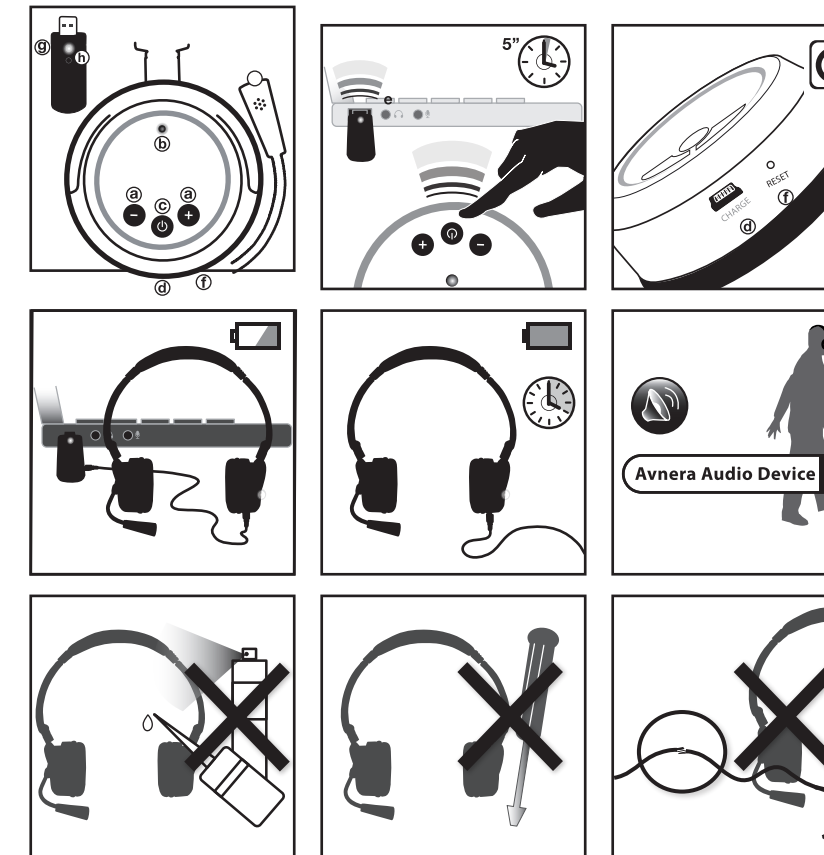
- The USB cable or plug has become frayed or damaged.
- The USB cable has been exposed to rain, liquids, or excessive moisture.
- You want to clean the headset.

### Avoiding hearing damage

Permanent hearing loss may occur if a headset is used at high volume. Set the volume to a safe level. Hearing experts suggest that to protect your hearing you should limit the amount of time you use the headset at high volume, avoid turning up the volume to block out noisy surroundings, turn down the volume if you can't hear people speaking near you.

### Maintaining battery life

Due to the physical nature of batteries, the charging time may become longer and the actual capacity of the battery may decrease over a prolonged period of time. To maintain maximum capacity battery should be depleted between charges. The rechargeable battery in the headset cannot be replaced.



## Regulatory Information

### Notice for the USA

**FCC Part 15:** This equipment has been tested and found to comply with the limits for a Class B digital device, pursuant to Part 15 of the FCC Rules. These limits are designed to provide reasonable protection against harmful interference in a residential installation. This equipment generates, uses and can radiate radio frequency energy and, if no installed and used in accordance with instructions, may cause harmful interference to radio communications. However, there is no guarantee that interference will not occur in a particular installation. If this equipment does cause harmful interference to radio or television reception, which can be determined by turning the equipment off and on, the user is encouraged to try to correct the interference by one or more of the following measures:

- Reorient or relocate the receiving antenna.
- Increase the separation between the equipment and receiver.
- Connect the equipment to an outlet on a circuit different from that to which the receiver is connected.
- Consult the dealer or an experienced radio/TV technician for help.

This device complies with part 15 of the FCC Rules. Operation is subjected to the following two conditions:

1. This device may not cause harmful interference, and
2. This device must accept any interference received, including interference that may cause undesired operation.

**CAUTION:** To comply with the limits of the Class B digital device, pursuant to Part 15 of the FCC Rules, this device must be installed with computer equipment certified to comply with Class B limits.

All cables used to connect to the computer and peripherals must be shielded and grounded. Operation with non-certified computers or non-shielded cables may result in interference to radio or television reception.

**MODIFICATION:** Any changes or modifications not expressly approved by the grantee of this device could void the user's authority to operate the device.