

Install Battery Components



CAUTION! For important information regarding loss of battery power and maintaining the life of your battery, refer to "Battery Storage Management" on page 30 and "Battery Pack Operating Instruction" on page 31.



NOTE: In order to prevent accidental data loss, the device can only be powered on when the battery pack is in place.

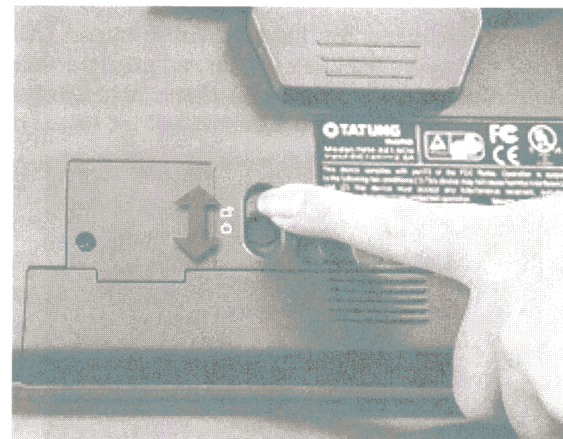
The Control4 Touch Screen has two power sources: battery or AC (using the AC/DC converter).

To install the battery:

1. Insert the battery pack (included in the box) into the battery slot.



2. Lock the battery lock.



NOTE: The system will not power on if the battery lock is not in the locked position.



NOTE: The device must be connected to a power supply (as indicated in the next section) for at least 2.5 hours for the battery to be fully charged.

Connect to Power Supply

1. Plug one end of the AC adapter into the DC-In jack and plug the other end into an electrical outlet. The power source can range from 100 to 240 Volts at 50 or 60 Hz.



2. Turn on the Control4 Touch Screen by pressing the power button. The system should turn on. If it does not, check your power connections. You might also try pressing the power button more firmly and slowly.



Calibrate the Touch Screen

You need to calibrate your Wireless Touch Screen: (1) the first time you use it, (2) after a hard reset, or (3) any time the system requests it. When the device needs calibration, the on-screen instruction will prompt you to do so. To calibrate the device:

1. With your fingertip, touch the screen firmly and accurately at the point indicated by the crosshairs (see the sample screen below).
2. Repeat Step 1 for each of the 4 subsequent points indicated by the crosshairs.



Set Network Settings

In order for this device to communicate with the other devices in the Control4 home automation system, you must set the network settings.

To set the network settings for this device:

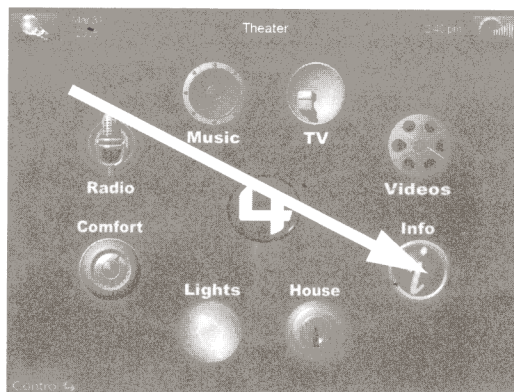
1. Ensure that the WiFi (802.11b/g) wireless access point (WAP) is configured to communicate with a Control4 controller.

2. Gather the following wireless network information from your WAP:
 - SSID (Service Set Identifier):

 - WEP Key (Wireless Encrypted Protocol Key), if enabled:

 - IP Addressing Requirements: The default is DHCP (with dynamic addresses). If, instead, you need to use a static IP address, you will need to provide a network IP address for this device:

3. On the Wireless Touch Screen Home page, press Info.



The Info button bar displays with the About page currently selected.



4. On the button bar, press the Network button to display the Network page.
5. On the Network page, press Wireless.
6. On the Wireless Network page:
 - 6a. Press Add.
 - 6b. Press in the text box provided for Network (SSID). An on-screen keyboard is displayed. Enter the SSID (which is case sensitive) and then press Done.
 - 6c. If WEP Key is enabled, press the WEP Key button to select it and then press in the text box provided. An on-screen keyboard is displayed. Select the WEP key length, enter the WEP key, and then press Done.
 - 6d. Press OK to return to the Wireless Network page.
 - 6e. Press OK again to return to the Network page. Your updates are displayed on this page.



7. The IP address is set to DHCP default (for dynamic IP addresses) by default. If you need to set a static IP address instead, complete the following steps:

7a. On the Network page, press IP Address.

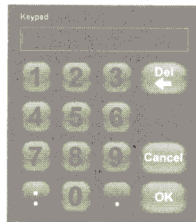


7b. Choose Assigned (for static IP address).

7c. Press in the text box provided for the IP Address.



An on-screen keypad is displayed. Enter the



static IP address for this device, and then press OK.

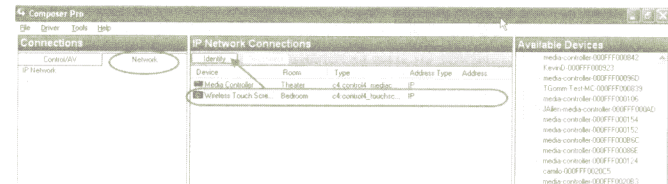
7d. Press OK to return to the Network page.

You should now be able to connect to a Control4 Director running on a Control4 device on the network.

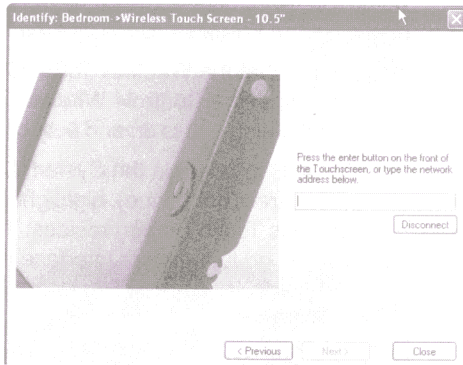
Add and Configure in Composer

Using the Composer software of your choice, add and configure the Wireless Touch Screen to your projects.

1. Ensure that the Wireless Touch Screen is set up as directed in the Control4 Wireless Touch Screen Setup Guide and is on and active (not in sleep mode).
2. Within Composer in the System Design view on the project tree (right pane), highlight the room where the Wireless Touch Screen resides. Then, under My Drivers, go to the User Interface section and double-click a Wireless Touch Screen to add the object to the project tree.
 - ▶ Wireless Touch screen V2 - 10.5"
3. Within the Connection view, use the Network tab to make the necessary network connection. To do this, highlight the Wireless Touch Screen object and click the Identify button.



- Once in Identify mode, go to the physical Wireless Touch Screen and press the button on the top of the Wireless Touch Screen to identify the on the network.



- Click Close to get out of the wizard.
- (Optional) To further set up the Wireless Touch Screen, configure the properties. Modifiable properties include:
 - ▶ Backlight Level — Allows you to set the light level of the backlight.
 - ▶ Backlight Preset Level — Allows you to set the default backlight level. If you ever restart the or repower the Mini Touch Screen, this is the backlight level it would go to automatically.

Connect to a Control4 Director



NOTE: The Wireless Touch Screen controls are auto-populated by a project on the controller that it connects to. If the subsystem buttons are not lit and no default room is displayed, you are not connected to a controller.

- On the Home page, press the Info button.
- On the *Info* page, press the Director button.
- If the Director page does not display, the Director View has probably been disabled and you must provide a passcode to enable it.
 - ▶ If you need the passcode, contact your authorized Control4 reseller.
 - ▶ If you have the passcode, go to Config > Disable View, enter the passcode, then press Director to unselect it. Now press the Director button again and you should view the Director page.
- In the *Connect to a Director* list of IP addresses, highlight your controller's IP address, then press Connect. A "Connecting..." message first displays, then the address displays in the upper-right corner of the Wireless Touch Screen display area to indicate your current connection.
- Verify that the date, default location (room), and time all appear in the header to ensure you have all the required connections.

6. Choose the location you want to control from the drop-down list provided in the header.



You can now use the Wireless Touch Screen with the Control4 home automation system. For more information, refer to the *Wireless Touch Screen - 10.5 User Guide*.

CHAPTER 3 Maintaining and Storing Hardware

Restrictions

- ▶ When fully-charged, the battery that ships with the Control4 Wireless Touch Screen can last for more than three hours under full operation.
- ▶ Limitations on IEEE802.11b/g WLAN coverage:
Outdoor = 90 meters (at line of sight); Indoor, such as in a home environment = 35 meters.
- ▶ The wireless coverage is dependent on a number of factors, including:
 - ▶ Distance from the access point
 - ▶ Quality of access point
 - ▶ Metal beams, studs, window frames
 - ▶ Other wireless devices (such as cordless phones, WiFi network, or microwave ovens)
 - ▶ RF noise - General noise floor in the band that the Wireless Touch Screen uses.

Troubleshooting

If you experience operational problems with the Control4 Wireless Touch Screen, check the following table for system troubleshooting. If problems persist, please contact your Control4-authorized reseller.

Battery Operation Problems	Action
----------------------------	--------

Main battery is low.	<ul style="list-style-type: none"> ◆ Replace or recharge the battery as soon as possible. ◆ Plug in the AC-DC adapter and continue using the Control4 Touch Screen
----------------------	--

The battery appears to be damaged or has reached the end of its service life.	<ul style="list-style-type: none"> ◆ Purchase a new battery by contacting your Control4-authorized reseller.
---	---

The Control4 Wireless Touch Screen turns off automatically.	<ul style="list-style-type: none"> ◆ Check to see if the battery power is too low or completely drained (refer to Table 1-2 on page 9). ◆ Check to see if the system is in suspend mode (refer to "Modes" on page 13). ◆ Tap on the screen to check if the display will activate. ◆ Plug in the AC-DC adapter to charge the battery.
---	--

The Control4 Wireless Touch Screen cannot be turned on when not connected to AC power.	<ul style="list-style-type: none"> ◆ Make sure the battery pack is inserted. ◆ Make sure the battery switch is in the locked position. ◆ The battery power may be too low to run the Touch Screen. Try connecting to AC power.
--	---

Display Related Problems	Action
--------------------------	--------

Screen appears dark	<ul style="list-style-type: none"> ◆ Excessive exposure to direct sunlight may cause the Control4 Touch Screen screen to temporarily darken. This is a natural consequence for LCD screens. It will not be permanent.
---------------------	--

Screen appears blank	<ul style="list-style-type: none"> ◆ Restart the Control4 Touch Screen by pressing the power button for 10 seconds.
----------------------	--

System Operation Problems	Action
---------------------------	--------

The Control4 Touch Screen locks up or runs slowly.	<ul style="list-style-type: none"> ◆ Try to reset the system by switching the power off and on. ◆ If switching the power off and on, the unit does not solve the problem, use the stylus to press the reset button for memory initialization (see "Top View" on page 10 for the location). This will reset all configurations and will require completing the setup process again.
--	--

The touch screen is damaged.	<ul style="list-style-type: none"> ◆ Contact the Control4-authorized reseller from whom you purchased the Wireless Touch Screen.
------------------------------	---

Network connection problems	<ul style="list-style-type: none"> ◆ View the system's wireless status by checking the WAP LED. ◆ Make sure that you have provided the required server information described in "Set Network Settings" on page 19. ◆ If using WEP (Wireless Encrypted Protocol), ensure that the same WEP key is being used on the Wireless Touch Screen and the Wireless Access Point (WAP). ◆ Make sure that the access point is connected to the proper network jack while it is functioning in the network infrastructure mode.
-----------------------------	---

Support and Service

You may obtain the Control4 Wireless Touch Screen product information from your Control4-authorized reseller.

Battery Storage Management

A battery kept in storage without being used for a long time loses power and needs to be recharged before use. To recharge a stored battery to 100% of its capacity, use the AC adapter or cradle. The recharging period depends on the storage temperature. Please refer to the information below:

Storage management (battery alone): According to standard production procedure, the included battery (model # C4-BAT10.52-B) is shipped with a battery charge at 50% of capacity.

<i>When battery is charged at 50% of capacity:</i>					
If storage temperature in degrees F =	69.8 ~86	87.8 ~104	105.8 ~122	123.8 ~140	141.8 ~158
Approximate # of days charge will last	80	60	40	24	13
Recommended recharge schedule	2 months	1.5 months	1 month	3 weeks	1 week

Once a battery is recharged up to 100% capacity, the storage time will be longer. Refer to the following table as a guideline.

<i>When battery is charged up to 100% of capacity:</i>					
If storage temperature in degrees F =	69.8 ~86	87.8 ~104	105.8 ~122	123.8 ~140	141.8 ~158
Approximate # of days charge will last	160	120	80	48	26
Recommended recharge schedule	4 months	3 months	2 months	6 weeks	2 weeks



WARNING! If charging to 100% of capacity is necessary, do **not** store battery packs next to one another. Any battery pack with high energy is dangerous at high temperatures and storing two or more of these battery packs next to each other fully charged only increases the danger.

Battery Pack Operating Instruction

Battery Charging

For safety reasons, the battery pack is shipped only partially charged. When you are ready for use, fully charge it using the AC adapter included or the optional cradle for approximately 1.5 hours.

Battery Cell Over-Discharge Notice

When the battery is discharged to a certain low voltage, the battery cell will be damaged permanently, and its capacity will drop dramatically. It is called over-discharge condition. If the over-discharge condition happens several times, the battery cell becomes non-functional and non-recoverable. The cell over-discharge failure is not covered by the standard product warranty.

Operation Management

When the battery pack is attached to a device, it is possible for the battery pack to lose battery power due to the small standby current of the system. Thus, users should use the AC adapter or cradle to charge the battery if the system is not used for several days.

When the device is idle for a period of time (a few days) without charging, we recommended you separate the battery pack from the device to extend the battery life and to help prevent battery cell over-discharge. However, to maintain the life of the battery, you will still need to periodically recharge it due to a self discharge feature in the battery cell.

FCC Information

FCC Interference Statement

This equipment has been tested and found to comply with the limits for a Class B digital device, pursuant to Part 15 of the FCC Rules. These limits are designed to provide reasonable protection against harmful interference in a residential installation. This equipment generates uses and can radiate radio frequency energy and, if not installed and used in accordance with the instructions, may cause harmful interference to radio communications. However, there is no guarantee that interference will not occur in a particular installation. If this equipment does cause harmful interference to radio or television reception, which can be determined by turning the equipment off and on, the user is encouraged to try to correct the interference by one of the following measures:

Reorient or relocate the receiving antenna.

- ▶ Increase the separation between the equipment and receiver.
- ▶ Connect the equipment into an outlet on a circuit different from that to which the receiver is connected.
- ▶ Consult the dealer or an experienced radio/TV technician for help.

FCC Caution

Any changes or modifications not expressly approved by the party responsible for compliance could void the user's authority to operate this equipment.

This device complies with Part 15 of the FCC Rules. Operation is subject to the following two conditions: (1) This device may not cause harmful interference, and (2) this device must accept any interference received, including interference that may cause undesired operation.

RF exposure warning

This equipment must be installed and operated in accordance with provided instructions and must not be co-located or operating in conjunction with any other antenna or transmitter. End-users and installers must be provide with antenna installation instructions and transmitter operating conditions for satisfying RF exposure compliance.
SAR Value: 0.740W/kg

Recycling



For information on recycling, please go to www.control4.com/recycling

Warranty

This device has a limited two (2) year warranty on parts from the date of purchase. Control4 will replace or repair any defective unit. Return unit to the place of purchase for replacement. For any damages incurred, the warranty will never exceed the purchase price of the device. This warranty does not cover installation, removal, or reinstallation cost. The warranty is not valid in cases where damage was incurred due to misuse, abuse, incorrect repair, or improper wiring or installation. It does not cover incidental or consequential damage.

This warranty gives you specific legal rights, and you might also be entitled to other rights that vary from country to country or state to state. Some states do not allow limitations on how long an implied warranty lasts or the exclusion or limitation of incidental or consequential damages. In these cases, the above mentioned limitations might not apply to you. For complete warranty information, see:

<http://www.control4.com/dealer/>.