

Taxeia Technology Co., Ltd.

We bring professionalism in your presentation

Thank you for choosing Taxeia Presenter



Index:

Package Content.....	Page 2
Introduction.....	Page 2
Benefit.....	Page 2
Features & Specification.....	Page 2
Presenter body content.....	Page 3
How to use.....	Page 3
Special control keys Features.....	Page 8
FAQ	Page 10
Warning	Page 11

Taxeia Technology Co., Ltd.

We bring professionalism in your presentation

1. Package Content:

- Professor X, TT-230 body
- Wireless mini-receiver
- Carrying case
- Quick start guide

2. Introduction:

The Professor X allows you to have multi-function purpose on different systems and devices of use with one product. First of all, you can simply use it as an Remo-Con Mouse to control your computer by [built-in Gyroscope](#); In addition, you can use it not only as a presenter for presentation briefing but also [Multimedia Playback functions](#), let your presentation out of boring text description; For examples, if you were a teacher, Multimedia Playback features could make your course content more exciting; If your device were based on [Android](#) system, you could use it as a remote control as well; If you were running [Apple Mac OS X](#), this presenter also could afford the same powerful functions.

3. Benefit:

- Support Remote Control mouse right / left buttons.
- G-sensor + Gyro Meter can move & control the cursor accurately.
- It can change and enlarge the cursor, size, shape, color, page up, page down.
- Simulate Straight line and Circle ... mark to High-light emphasis.
- Temporary storage High-light emphasis.
- Support Multimedia Playback function.
- Support 3 systems, including [Windows](#) XP / Vista / Win7 / Win8. [Mac OS X](#) (10.5 above) and [Android](#) (3.0 above)

4. Feature & Specification:

- Support Window/MAC/Android OS.
- Use 2.4GRF Wireless communication solution.
- Up to **10** meters of transmission distance.
- Easy to Use, Plug n Play.
- G+G (G-sensor + Gyro Meter) for motion solution.
- You can change the Cursor size, Color and Shape, Page Up / Page Down function, also support Right / Left click mouse function.
- Back Light keypad.
- Battery life cycle: **~80 hours** continue use with 2 AAA batteries
- Sleep mode: while G-sensor and Gyro Meter no motion.
- Low Power Indicator.

Taxeia Technology Co., Ltd.

We bring professionalism in your presentation

- Working environment temperature: 5°C - 45°C

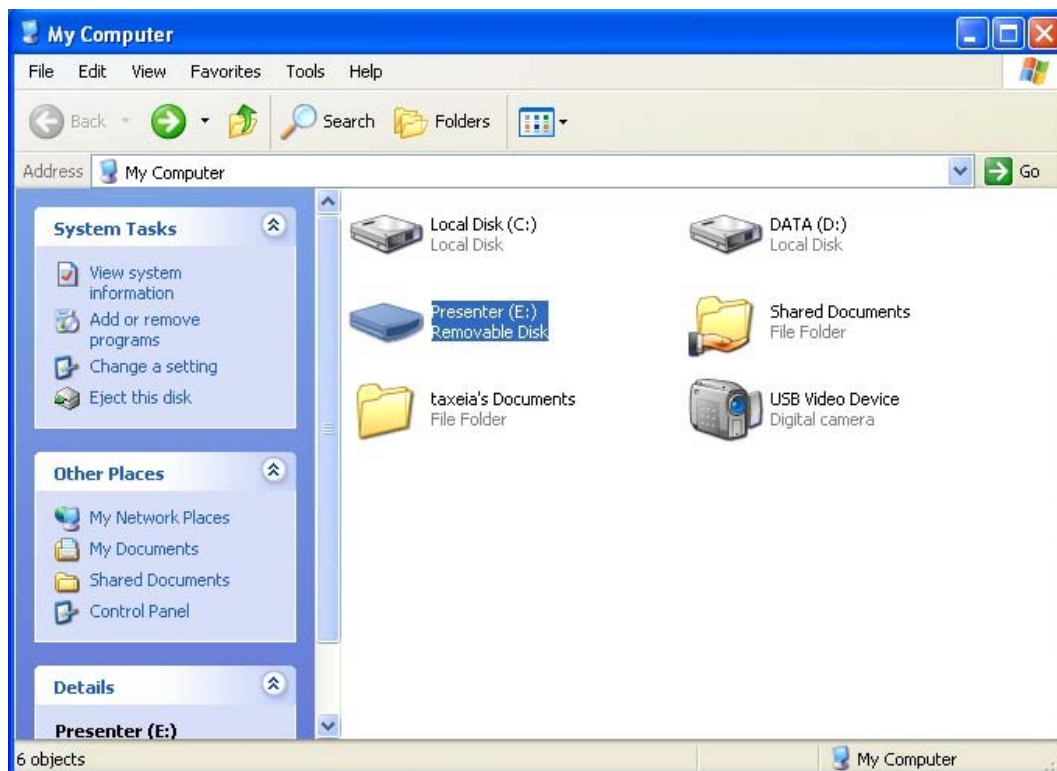
5. Professor X, TT-230 content:



6. How to Use:

- Withdraw the Wireless mini-receiver (RX) from the bottom of the Presenter and insert into the USB port of your machine, let device recognize (RX). Make sure the left side of the switch in the "W" position, the right side of the switch in the "OFF" position. Then turn on right side switch of the presenter, push from "OFF" to "P" position.

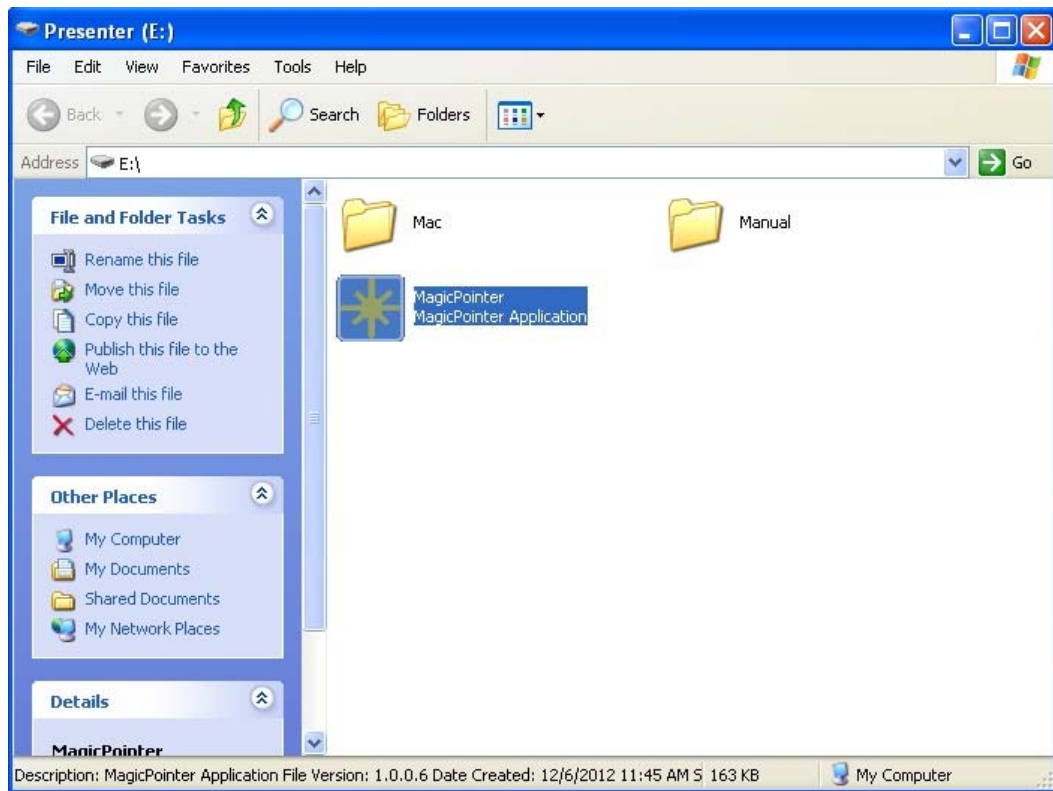
I. Your PC Screen will show as below:



II. Double Click Presenter Disk, you can see the file name as below:

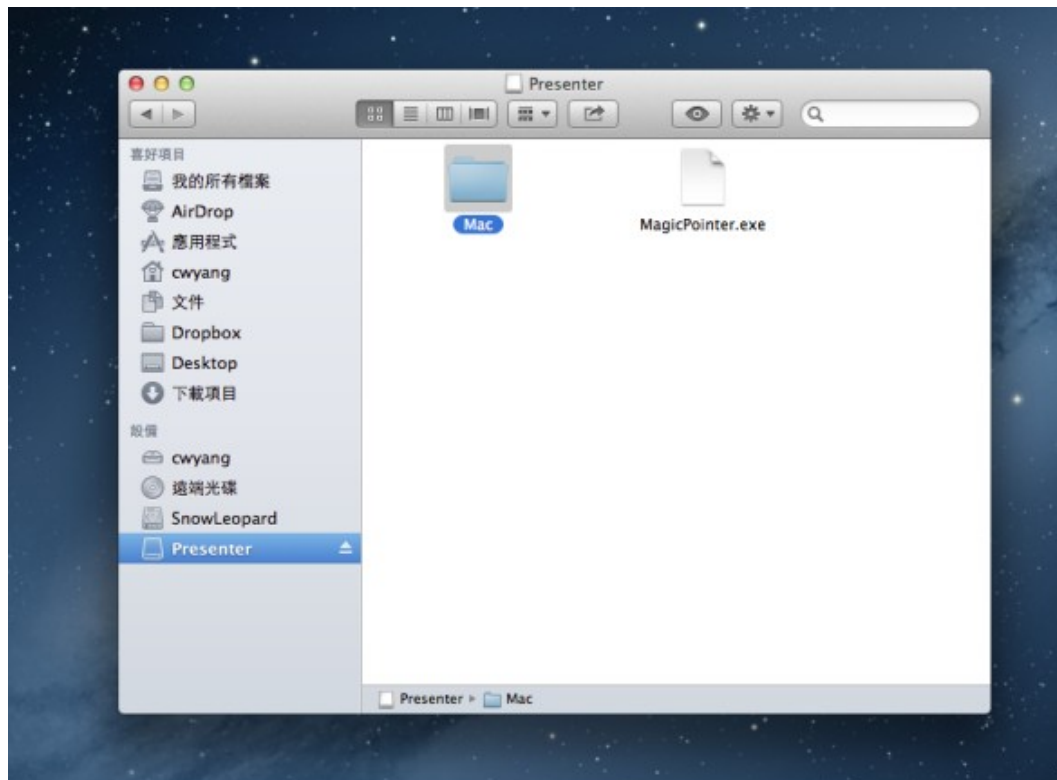
Taxeia Technology Co., Ltd.

We bring professionalism in your presentation



III. Double click "MagicPointer.exe" file.

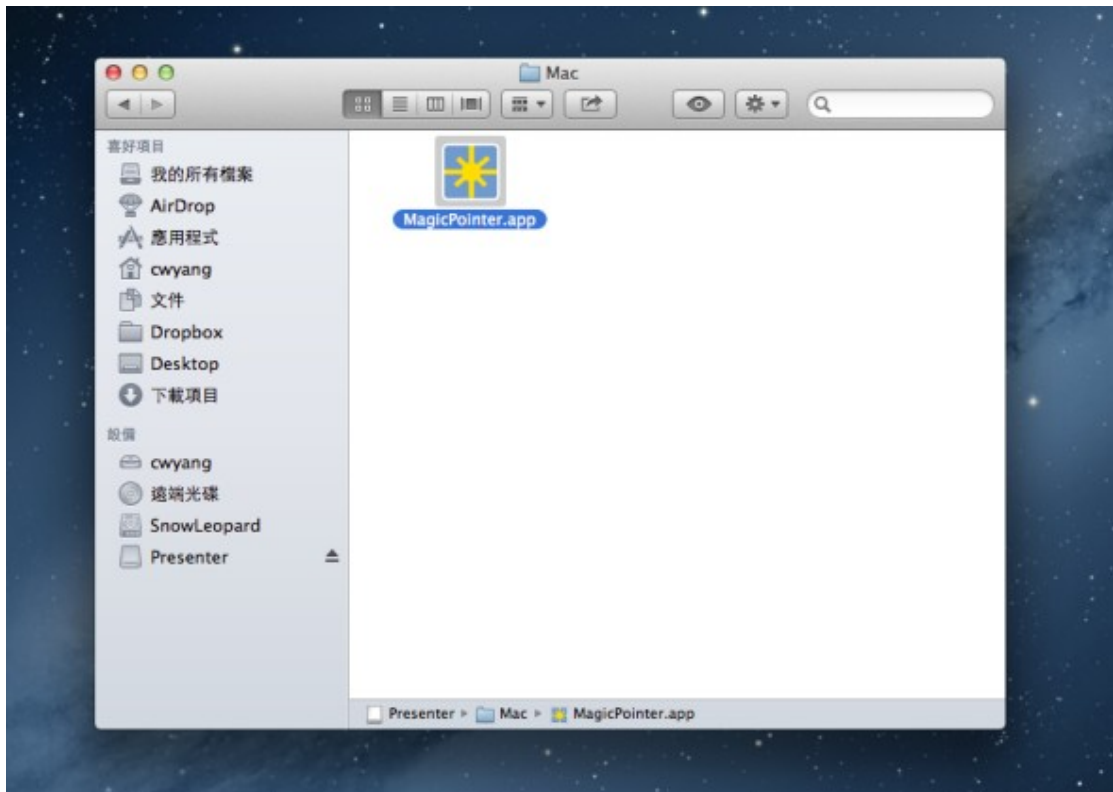
IV. Under Mac OS X:



Taxeia Technology Co., Ltd.

We bring professionalism in your presentation

V. Double click Mac folder, will show as below:



VI. Please double click "MagicPointer.app" file

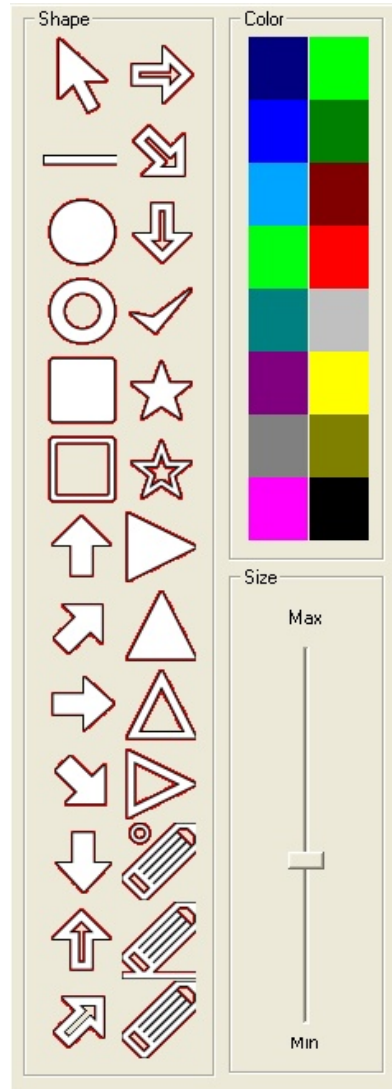
VII. Start using (For MS Office Power Point software, Mac OS KeyNote, left side switch at W position)



- A.** Start moving your presenter by swing your hand, you can see the mouse cursor moves as your gesture.
- B.** If you want to demo a presentation, please open Power Point files at your PC (Or KeyNote in Mac OS), then press "⏪" key, enter the presentation mode.
- C.** Press "NEXT" "BACK" button to show next page or previous page.
- D.** Press "⏪" "⏩" button as your mouse Left/Right click.
- E.** Press "⏏", enter black screen.
- F.** Press "Esc", leave presentation mode.
- G.** Press and hold the "☀" button to show a larger, colorful and shaped cursor on the screen. When you release "☀" button, the cursor will stick on the screen, for you to demarcate specific topics, click "☀" button again to return to the normal mouse mode.
- H.** How to change the large cursor's color, shape, size and other function:
 - 1. Long press "SET" function key for 2 seconds, there will come out a select

Taxeia Technology Co., Ltd.

We bring professionalism in your presentation

menu on your left screen as following picture, you can select your cursor shape, color and size through this menu by click "⏪◀", then press "⚙️" button to leave menu and use your cursor.



2. Special Function Key: Choice  , you can pull straight line on the screen, choice  , you can make any shape of circle on your screen. Temporary storage High-light emphasis, once press **NEXT**, **BACK**, ⏪◀, or ▶▶ key, the High-light emphasis disappear.
3. Or, you can manually change the large cursor color: Repeatedly click "**SET**" button, until "**Color**" shows on screen, use "**NEXT**" "**BACK**" to change.
4. Repeatedly click "**SET**" button, until "**Shape**" shows on screen, use




Taxeia Technology Co., Ltd.

We bring professionalism in your presentation



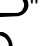
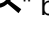
"NEXT" "BACK" to change.





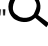
5. Repeatedly click "**SET**" button, until "**Size**" shows on screen, use "**NEXT**" "**BACK**" to change.
6. Click "☀️" key to leave menu mode.

VIII. Start Multimedia Mode(Multimedia player can be applied for the Win / Mac OS X, Android)

- A. Open multimedia player in your PC .
- B. Turn the right side switch to "**M**" position.
- C. Click " button, start to Play and Pause.
- D. Click "**NEXT**" "**BACK**" button to adjust volume.
- E. Click " " button to select "forward/backward".

IX. Using Android Mode

- A. Push the left side switch to "**A**" position.
- B. Swing your presenter, use mouse cursor on the screen to select your item.
- C. Click " button, back to home screen.
- D. Click " button, open the menu.
- E. Click " button, back to previous page.
- F. Click " button, enter search mode.

X. Push the left switch to " position, this will lock the 4 buttons " " " " " on the bottom of presenter, to avoid inadvertently.

* (Note 1) Each presenter has been paired when it was in factory, if you find the mouse cursor does not move while swing your presenter, you can manually pair your presenter with receiver. First, Receiver (RX) plug in USB port of your device press and hold the "**SET**" button of the Presenter, and at the same time push the right side switch from "**OFF**" to "**P**" position; Presenter's blue indication light will continuously flash, when indication light dimmed, the pairing process is complete.

* (Note 2) Each presenter has been calibrated when it was in factory. If you swing your presenter, mouse cursor movement is out of your control, please apply calibration process. Calibration method: First, Receiver (RX) plug in USB port of your device, press and hold the "☀️" key, while move the right side switch from

Taxeia Technology Co., Ltd.

We bring professionalism in your presentation

"OFF" to the "P" position. Presenter blue indication light up, please flat presenter on the desk, when light dimmed, the calibration process is completed.

7. Special control keys Features:



- Right side switch(Presenter/Multimedia/PW Off): Control top of the five keys:



- Black lettering as Presenter Mode(Presenter), Red lettering as Multimedia Mode

Taxeia Technology Co., Ltd.

We bring professionalism in your presentation

(Multimedia)

- Battery indication Light
- Next Slide / Vol Up.
- Pointer / Play/Pause.
- Mouse **Left** button/ Last Track.
- Mouse **Right** button/ Next Track.
- Back Slide / Vol Down.



- Left side switch(PC / Android / Lock): control the down of four buttons:

Taxeia Technology Co., Ltd.

We bring professionalism in your presentation



- PC - Support Windows & Mac OS X.
- Android - Support Android system, including STB.
- "Lock" button can disable 4 keys on the bottom, to avoid inadvertently
- Black lettering as PC Mode(Win/Mac OS X) · Blue lettering as Android Mode.
(Android)
- PPT Play / Home - Start presentation(Shift+F5) / Android Home function key
- Black Screen / Menu (Android Menu Function Key).
- ESC / Android Back - PC ESC key, leave presentation mode / Android last page function key.
- Set / Search - Large mouse cursor setup (Color/Shape/Size) / Android search function key.

8. FAQ:

1. My Presenter doesn't work:

A): Make sure the receiver plug into USB port at your machine, and then switch the right side button to "P" position.

2. My receiver is plugged into machine USB port and switch on "P" position, but my Presenter still doesn't work:

A): Please manually pair your presenter with receiver. First, Receiver (RX) plug in USB port of your device, press and hold the "SET" button of the Presenter, and at the

Taxeia Technology Co., Ltd.

We bring professionalism in your presentation

same time push the right side switch from "OFF" to "P" position; Presenter's blue indication light will continuously flash, when indication light dimmed, the pairing process is complete.

3. When I swing my presenter, mouse cursor movement is out of my control:

A): There are 2 ways to solve this issue: Method A: Hold your presenter and quickly swing, you will find that the cursor move with your gestures. If Method A doesn't work, try Method B: Re-Calibrate your presenter. First, Receiver (RX) plug in USB port of your device, press and hold the "☼" key, while move the right side switch from "OFF" to the "P" position. Presenter blue indication light up, please flat presenter on the desk, when light dimmed, the calibration process is completed.

4. How I use large mouse cursor mode?

A): Make sure you already double click "MagicPointer.exe" file (Or "MagicPointer.app" at Mac OS), the press and hold "☼" button.

5. How I can return to normal mouse cursor mode from large cursor mode?

A). Click "☼" button, you will leave large cursor mode.

6. I leave my presenter for a while, when I come back, mouse cursor cannot work.

A). The presenter will enter sleep mode automatically, when presenter doesn't sense any movement in 1 minute. To wake up from sleep mode, just press "☼" button.

7. My Presenter indication light turns to red.

A). If your Presenter indication light turns to red, means you're going to run out of battery, please replace new batteries.

9. Warning:

1. If you find any abnormal situations, such as over heat, smoke, smelly anomalies, please stop using it immediately. And removed the receiver from the computer, remove the battery from the presenter body. And immediately contact with the store of where you purchased.

2. Do not throwing or tossing of the products, or self-repair, renovation.

3. The products do not have the waterproof function, if any damp phenomenon, please stop using it immediately.

4. Do not use this product in hospital or airplanes or any other place which prohibiting the

Taxeia Technology Co., Ltd.

We bring professionalism in your presentation

use of radio waves.

5. Please remove the battery when not in use for long periods of time.

6. This equipment complies with FCC RF radiation exposure limits set forth for an uncontrolled environment.

This device complies with part 15 of the FCC rules. Operation is subject to the following two conditions: (1) this device may not cause harmful interference, and (2) this device must accept any interference received, including interference that may cause undesired operation.

Changes or modifications made to this equipment not expressly approved by Taxeia Technology Co., Ltd. may void the FCC authorization to operate this equipment.

7.NOTE: The manufacturer is not responsible for any radio or TV interference caused by unauthorized modifications or changes to this equipment. Such modifications or changes could void the user's authority to operate the equipment.

8.NOTE: This equipment has been tested and found to comply with the limits for a Class B digital device, pursuant to part 15 of the FCC Rules. These limits are designed to provide reasonable protection against harmful interference in a residential installation. This equipment generates uses and can radiate radio frequency energy and, if not installed and used in accordance with the instructions, may cause harmful interference to radio communications. However, there is no guarantee that interference will not occur in a particular installation. If this equipment does cause harmful interference to radio or television reception, which can be determined by turning the equipment off and on, the user is encouraged to try to correct the interference by one or more of the following measures:

- Reorient or relocate the receiving antenna.
- Increase the separation between the equipment and receiver.
- Connect the equipment into an outlet on a circuit different from that to which the receiver is connected.
- Consult the dealer or an experienced radio/TV technician for help

If you have any other problem, please contact your local dealer or email your problem to sales@taxeia.com

We are always at your service.