

Android Box User Manual

Trade Name : IQ Box

Product Name : Android Box

Model : BOX20B

Manufacturer: Shenzhen Smart Device Technology Co., LTD

It's important to read these instructions prior to using your new product for the first time.



FCC ID : 2AFA2BOX20B

FCC Warning:

This device complies with Part 15 of the FCC rules.

This equipment has been tested and found to comply with the limits for a Class B digital device, pursuant to part 15 of the FCC Rules. These limits are designed to provide reasonable protection against harmful interference in a residential installation. This equipment generates, uses and can radiate radio frequency energy and, if not installed and used in accordance with the determined by turning the equipment off and on, the user is However, there is no guarantee that interference will not occur in a particular installation. If this equipment does cause harmful interference to radio or television reception, which can be instructions, may cause harmful interference to radio communications. encouraged to try to correct the interference by one or more of the following measures:

- Reorient or relocate the receiving antenna.
- Increase the separation between the equipment and receiver.
- Connect the equipment into an outlet on a circuit different from that to which the receiver is connected.
- Consult the dealer or an experienced radio/TV technician for help.

Caution: Any changes or modifications to this device not explicitly approved by manufacturer could void your authority to operate this equipment.

This device complies with part 15 of the FCC Rules. Operation is subject to the following two conditions: (1) This device may not harmful interference, and (2) this device must accept any interference received, including interference that may cause undesired operation.

WARNING: A shielded-type power cord is required in order to meet FCC emission limits and also to prevent interference to the nearby radio and television reception. It is essential that only the supplied power cord be used. Use only shielded cables to connect I/O devices to this equipment.

For product available in the USA/Canada market, only channel 1~11 can be operated. Other channels is not possible. This device and its antenna(s) must not be co-located or operation in conjunction with any other antenna or transmitter.

This equipment should be installed and operated with minimum distance 20 cm between the radiator and your body.

Service Information

This product should be serviced only by those specially trained in appropriate servicing techniques. For instructions on how to obtain service, refer to the warranty included in this guide.

IMPORTANT SAFETY INSTRUCTIONS

PLEASE READ AND SAVE THIS FOR FUTURE REFERENCE

Some of the following information may not apply to your particular product; however, as with any electronic product, precautions should be observed during handling and use.

- Read these instructions.
- Keep these instructions.
- Heed all warnings.
- Follow all instructions.
- Do not use this apparatus near water.
- Clean only with dry cloth.
- Do not block any ventilation openings. Install in accordance with the manufacturer's instructions.
- Do not install near any heat sources such as radiators, heat registers, stoves, or other apparatus (including amplifiers) that produce heat.
- Protect the power cord from being walked on or pinched particularly at plugs, convenience receptacles, and the point where they exit from the apparatus.

- Only use attachments / accessories specified by the manufacturer.
- Unplug this apparatus during lightning storms or when unused for long periods of time.
- Refer all servicing to qualified service personnel. Servicing is required when the apparatus has been damaged in any way, such as power-supply cord or plug is damaged, liquid has been spilled or objects have fallen into the apparatus, the apparatus has been exposed to rain or moisture, does not operate normally, or has been dropped.

ADDITIONAL SAFETY INFORMATION

- The AC adapter and apparatus shall not be exposed to dripping or splashing and no objects filled with liquids, such as vases, shall be placed on the apparatus.
- Always leave sufficient space around the product for ventilation. Do not place product in or on a bed, rug, in a bookcase or cabinet that may prevent air flow through vent openings.
- Do not place lighted candles, cigarettes, cigars, etc. on the product.
- Care should be taken so that objects do not fall into the product.
- Do not attempt to disassemble the cabinet. This product does not contain customer serviceable components.
- To prevent the risk of fire or electric shock, do not expose this apparatus to rain or moisture.
- Do not play your headset at high volume. Hearing experts warn against extended high volume play.

Android Box user manual

Content

Our android box is about amazing, interactive experiences, powered by the latest technologies and apps.
--- --- excellent streaming media player.



Chapter 1. BEFORE GETTING STARTED

This Android Box is a highly sophisticated electronic device. Please read this manual before using this android box, power adapter or any accessories.

Care and Maintenance

- Keep your android box and all its parts out of the reach of children.
- Keep your android box dry.
- Avoid exposing your android box to extreme hot or cold temperatures.
- Avoid placing your android box close to lit cigarettes, naked flames or any heat source.
- Do not attempt to disassemble your android box device. Non-expert handling of the device may damage it.
- Do not drop, knock, or shake your android box. Rough handling may break internal circuit boards.
- Do not paint your android box as the paint could obstruct the ports and prevent normal use.
- Treat your android box with care, and keep it in a clean and dust free place.

Chapter 2. GETTING TO KNOW YOUR Android device

Your Android device



- | | |
|-----------------------|-----------------------|
| 1. Power plug-in slot | 5. USB |
| 2. VGA | 6. Head Phone |
| 3. HDMI | 7. Micro SD card slot |
| 4. Ethernet | |

Install the Storage Card --- Micro SD Card

1. Turn off the tablet.
2. Locate the slot for the micro SD card.
3. Insert the micro SD card.

Remove Micro SD Card

Turn off the tablet :

1. Push the micro SD card to eject it from the slot.
2. Pull out the micro SD card from the slot.

Headphone Jack

For listening to music and watching videos, insert the headset into the headphone jack.

Power Adapter

This android box comes with a power adapter (Charger

Output: 12V, 2A, NO POWER CORD) to charge your android box from any standard AC 110V - AC 220V power outlet.

Chapter 3. GETTING STARTED

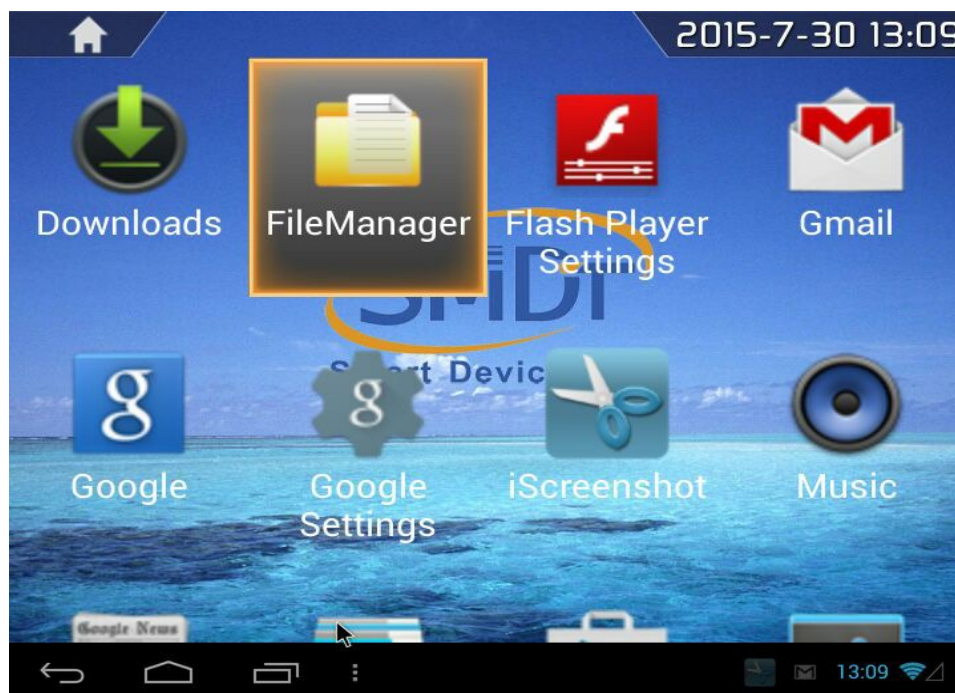
There is no power key on Android box.

Turn Your Android box On / Off

Press electricity **power socket on or off** to turn on or turn off this Android box.

Start Using Your Android box

After Android device power on, it may take one minute to boot up the device and then you get into the welcome page.



Chapter 4. SETTINGS

Settings lets you configure the android box, set app options, add accounts, and change other preferences.

WIRELESS & NETWORKS

Wi-Fi — Enable or disable Wi-Fi, and connect to a wireless network so that you can check email, search the Web, or access social media websites.

LAN — Enable or disable LAN, and connect to a fixed network.

DEVICE

Sound — Set Volumes and define sounds.

Storage — View available space in INTERNAL STORAGE, SD CARD , USB STORAGE and so on.

Apps — View downloaded apps and running apps. To view information or uninstall an app, tap the relevant app.

PERSONAL

Language & input — Set preferences for Language, INPUT METHODS and so on.

ACCOUNTS

You can add an email account or another type of account.

SYSTEM

Date & time — Enable or disable Automatic date & time, and select preferences for date, time, time zone, time format, and date format.

Accessibility — Select preferences for SERVICES and SYSTEM.

About Android box

Check System updates, Status, Legal information etc.



Chapter 5. CONNECTING

Connect to the Internet

Your tablet's networking capabilities allow you to access the Internet through Wi-Fi.

Wi-Fi

To use the Wi-Fi function, you would need to access a wireless access point or hotspot.

Turn on Wi-Fi and Connect to an Access Point

1. Press **Applications** , select **Settings** , and touch the checkbox to turn it on or turn it off.
2. When Wi-Fi turned on, you can see all available access points that were shown and displayed in the list on the right.
3. Select the one you wish to connect to and enter the password if required
Touch **Connect** to connect the wireless access point.

Add a New Wi-Fi Network

1. Press **Applications** , and then touch **Settings** .
2. Touch **Wireless & networks**, turn on the **Wi-Fi** and

then touch the **Add Wi-Fi network** at the top of right corner.

3. Enter the network SSID and select the security, then touch **Save**.

Security

1. **Open:** No security.
2. **WEP:** Wired Equivalent Privacy. Note: A passphrase is required.
3. **WPA/WPA2 PSK:** Wi-Fi Protected Access. Note: A password is required.
4. **802.1 x EAP:** 802.1x Extensible Authentication Protocol.

Chapter 6. Preinstalled Apps

Your Android box comes with many apps preinstalled to allow you to browse the web, send and receive email, and access entertainment. Spend some time exploring these apps to learn how your android box can be most useful for you.

Chapter 7. Web pages surfing

View Web Pages

Open a Web Browser:

Go to a Web Page

1. Open Browser.
2. Enter a web address
3. Click [enter] to go to that website.

Chapter 8. View picture gallery

Picture Gallery

Open Picture Gallery:

Press **Home** , touch the **Applications** , and then select **Gallery** .

Copyright and Trademark Notices

Additional Information

Google, Google Play and other marks are trademarks of Google Inc.

The Wi-Fi CERTIFIED Logo is a certification mark of the Wi-Fi Alliance. The Wi-Fi Protected

Setup Mark is a mark of the Wi-Fi Alliance.

HDMI, the HDMI Logo and High-Definition