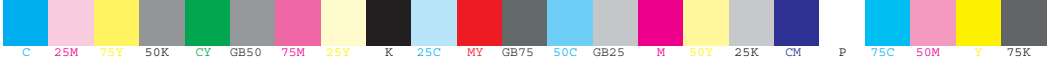


# HD-DTA Easy Setup Guide

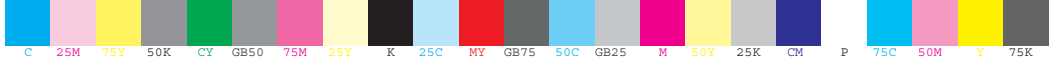
Installation • Operation • Troubleshooting





# Table of Contents

What's included in this Install Kit?	4
Start Here!	6
Connecting to a TV with HDMI Cable (No VCR)	8
Connecting to a TV+VCR with Coax cable	9
Connecting to a TV with Coax cable (No VCR)	10
Power Up	12
Connecting to the Network and activating your HD-DTA	14
Verify your Services	15
Programming the new remote	16
HD-DTA Operation Guide	20
Using your HD-DTA and VCR	21
Remote Operation Guide	23
RF Remote Pairing Process	26
Troubleshooting Guide	28
DTA Operation Guide (Two remotes)	30

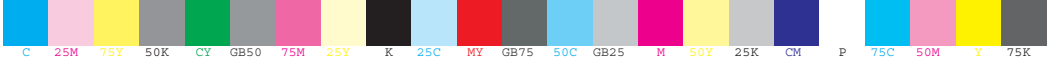


# What you need to know

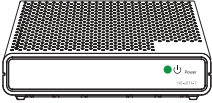
To bring you better service now and in the future your cable operator is upgrading to an All-Digital network – All-Digital for every channel, on every TV set.

# What you need to do

To continue to receive all the channels you are used to, you will need to make sure that every TV in your home is equipped with one of our HD-DTA or Digital Cable Boxes.



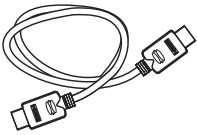
# What's included in this Install Kit?



---

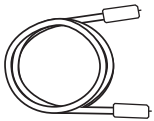
## HD-DTA

Each TV will need to be connected to a HD-DTA or a Digital Cable Box, but not both.



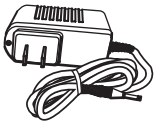
---

## HDMI Cable



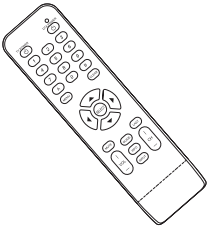
---

## 5 Foot Coax Cable



---

## Power Cord



---

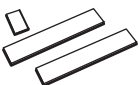
## Remote Control

In order to operate the HD-DTA you must use the remote control included with this kit. Programming instructions for the remote control are included in this guide.



---

## 2 AAA Batteries

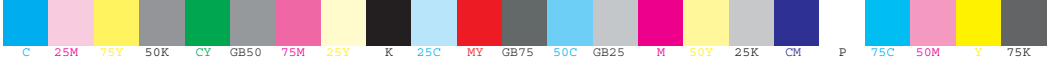


---

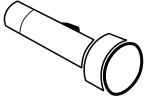
## Adhesive Fasteners

Use these if you want to stick the HD-DTA to your TV.

**Note:** Please be careful. Technicolor is not responsible for any damage done to any surface you stick these to.

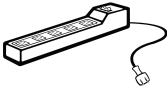


# Items that you may also need:



---

## Flashlight



---

## Power Strip

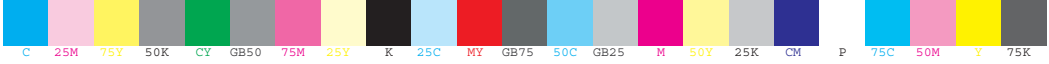
You'll need a power strip if you already have 2 items plugged into the electrical outlet that you plan to use.



---

## Extension Cord

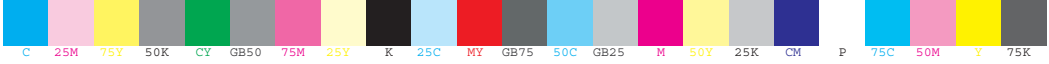
You'll need an extension cord if you already have 2 items plugged into the electrical outlet closest to your TV.



# Start Here!

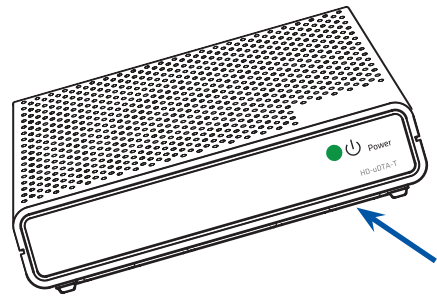
Please refer to the Welcome Letter that was delivered with this kit to identify:

- *The phone number associated with your Cable Operator account*
- *The channel where you can view a video demonstration of these instructions*

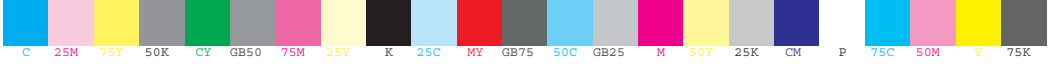


The last four digits of the serial number of each HD-DTA that you will be activating:

Serial Number	Location in your home	Output Channel
_____	_____	_____
_____	_____	_____
_____	_____	_____
_____	_____	_____
_____	_____	_____
_____	_____	_____



**Note:** The serial number can be found on the bottom of the HD-DTA itself and is also printed on the outside of the HD-DTA package.



# Connecting to a TV with HDMI Cable (No VCR)

If you have a VCR, follow the directions on page 9.

If you do not have a VCR, follow the directions on this page.

## 1

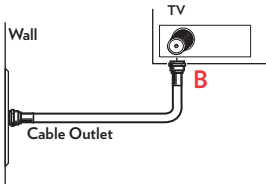
### Connect the HD-DTA to the Cable Outlet

A

Turn off your TV.

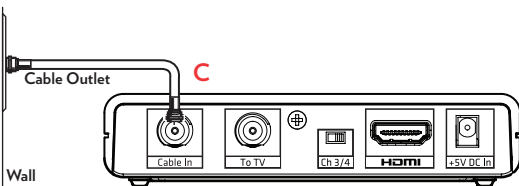
B

Locate the cable that currently runs from the cable wall outlet to the back of your TV. Leave one end of the cable connected to the wall, but disconnect the other end from the back of your TV.



C

Reconnect this end of the cable to the "Cable In" input on the back of the HD-DTA.



## 2

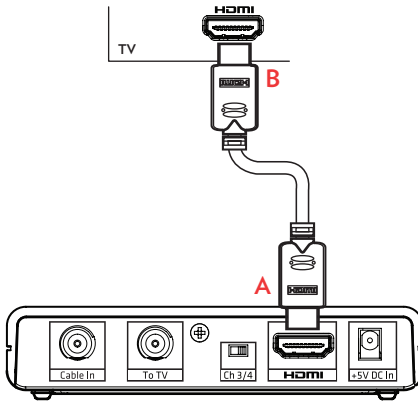
### Connect the HD-DTA to the TV

A

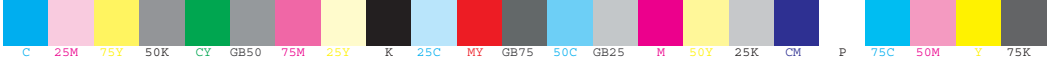
Find the HDMI cable included in this kit. Connect one end of the cable to the "HDMI" input on the back of the HD-DTA.

B

Connect the other end to the "HDMI" input on the back of your TV.







# Connecting to a TV+VCR with Coax cable

If you do not have a VCR, follow the directions on page 8.

If you have a VCR, follow the directions on this page.

# 1

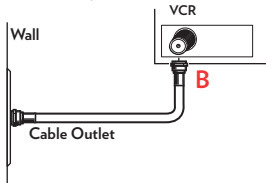
Connect the HD-DTA to the Cable Outlet

## A

Turn off your TV.

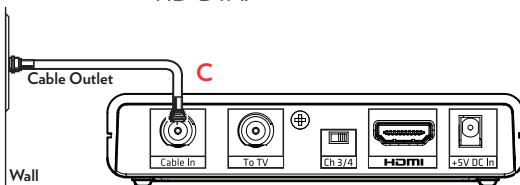
## B

Locate the cable that currently runs from the cable wall outlet to the back of your VCR (or other recording device). Leave one end of the cable connected to the wall, but disconnect the other end from the back of your VCR.



## C

Reconnect this end of the cable to the "Cable In" input on the back of the HD-DTA.



# 2

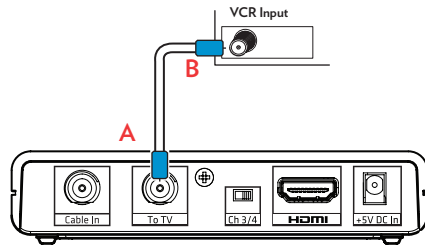
Connect the HD-DTA to the VCR

## A

Find the 5-foot coax cable included in this kit. Connect one end of the cable to the "To TV" input on the back of the HD-DTA.

## B

Connect the other end to the "Cable In/RF In" input on the back of your VCR.



# Connecting to a TV with Coax cable (No VCR)

If you have a VCR, follow the directions on this page 9.

## 1

### Connect the HD-DTA to the Cable Outlet

## 2

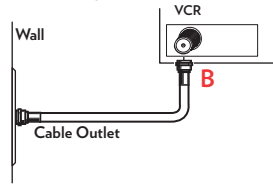
### Connect the HD-DTA to the TV

**A**

Turn off your TV.

**B**

Locate the cable that currently runs from the cable wall outlet to the back of your VCR (or other recording device). Leave one end of the cable connected to the wall, but disconnect the other end from the back of your VCR.

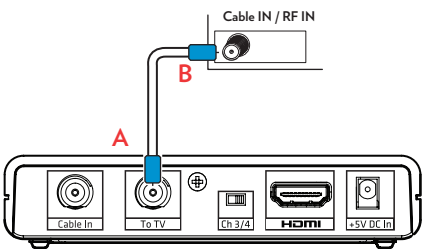


**A**

Find the 5-foot coax cable included in this kit. Connect one end of the cable to the "To TV" input on the back of the HD-DTA.

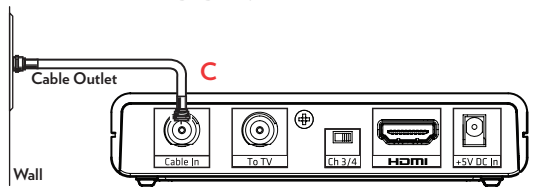
**B**

Connect the other end to the "Cable In/RF In" input on the back of your TV.

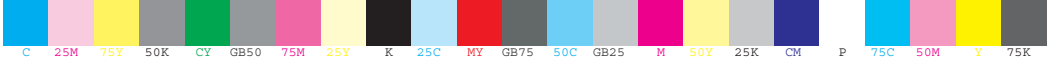


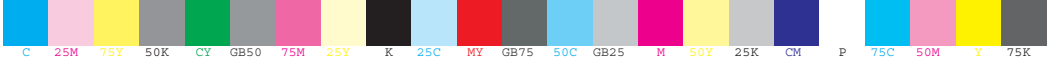
**C**

Reconnect this end of the cable to the "Cable In" input on the back of the HD-DTA.



10





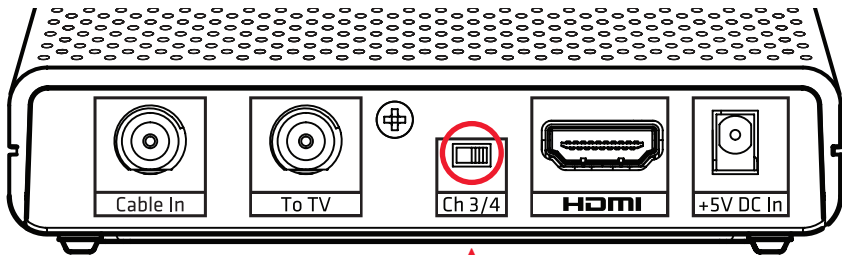
# Power Up

## A

If you are connecting the HD-DTA to a television with HDMI, set your TV to choose “HDMI” as the input source.

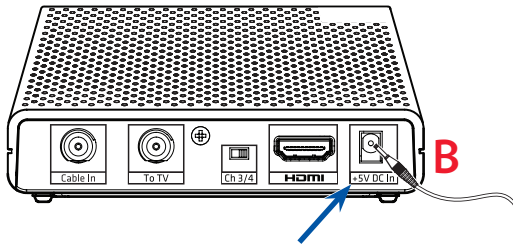
Or

Pick which output channel your TV will use and make sure your television is set to that selected channel by setting the switch on the back of the HD-DTA to the proper output channel (*Ch 3 or Ch 4*).



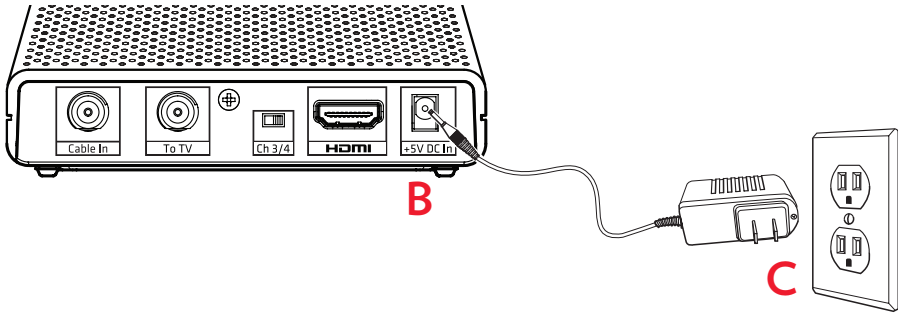
## B

Find the power cord included in the kit. Plug the end of the power cord into the power input “+5V DC In” on the back of the HD-DTA.



# C

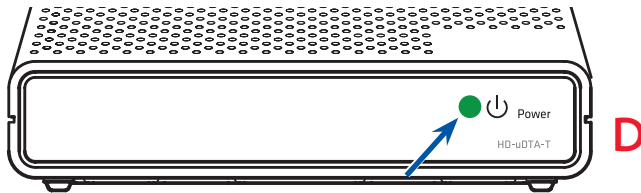
Plug the other end into a working electrical outlet or power strip.  
 Make sure that the outlet is not controlled by a switch that gets turned on and off.



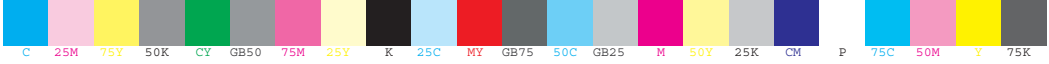
# D

Check the front of the HD-DTA to see if the green light is on and blinking.  
 If it is not on, check to make sure the power plug was plugged into the power input “+5V DC In” and that the other end is plugged into a working electrical outlet.

**Note:** After activation, this light will remain on and constantly lit.



**Please wait 20 minutes before calling to activate.  
 This will allow the HD-DTA to connect to the network and get the latest updates.**



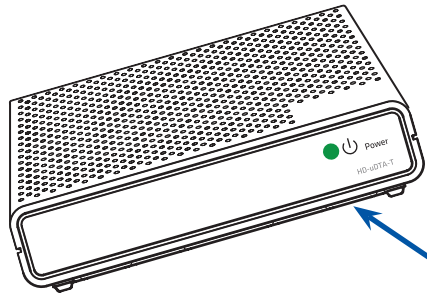
# Connecting to the Network and activating your HD-DTA

**Remember, you must wait 20 minutes before calling to activate. This will allow the HD-DTA to connect to the network and get the latest updates.**

## A

If you received more than one HD-DTA, this would be a good time to get the others installed so you can activate them all with one call.

**Note:** To complete your activation, you will need your account information and the serial number of each HD-DTA you are activating.



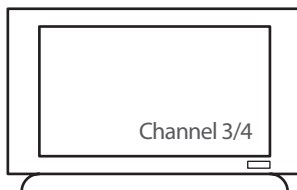
**Note:** The serial number can be found on the bottom of the HD-DTA itself and is also printed on the outside of the HD-DTA package.

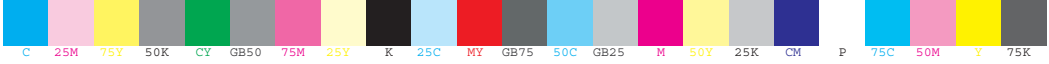
## B

Call your cable operator's automated activation line and follow the instructions.

## C

Turn on your TV and tune it to the proper output channel (*Ch 3 or Ch 4*).





# Verify your Services

After completing the activation step, wait a few minutes for programming to appear.

## A

Confirm that the HD-DTA is connected to the power and that the light on the front is solid (*not blinking*).

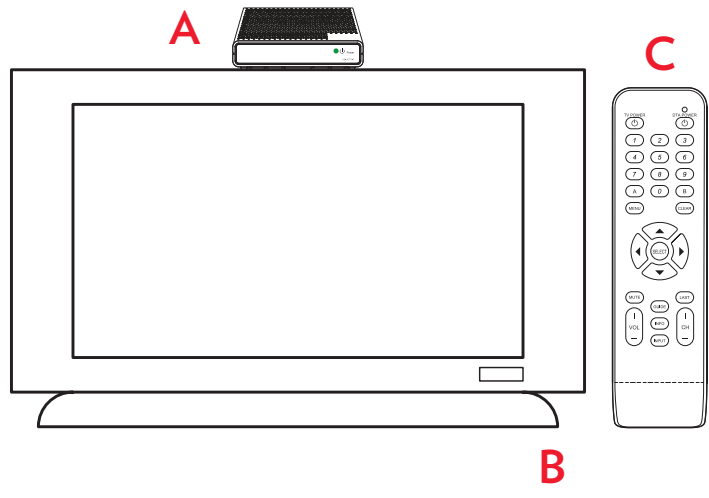
## B

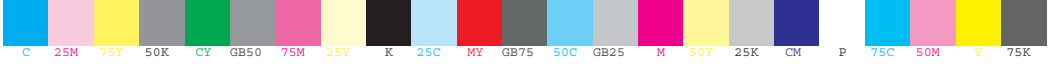
Make sure that the TV is on.

## C

Using the remote control to operate your HD-DTA, scroll through your channels and make sure they are all working.

**Note:** If the light is blinking or your channels are not showing up, turn to the troubleshooting section of this guide.





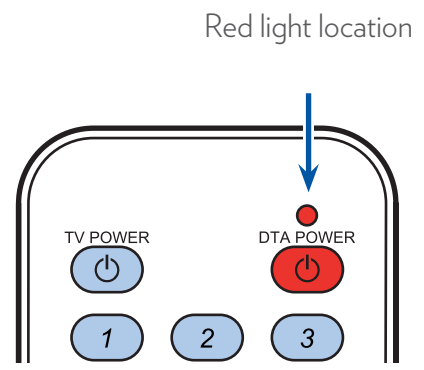
# Programming the new remote

This is the easiest method for programming your remote control to operate the volume and power on your TV.

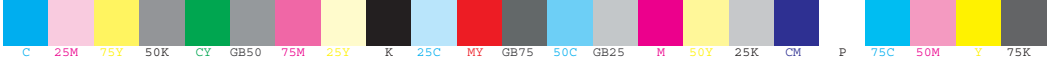
In this next section, you will use the remote to automatically find the right code for your TV.

## Keys to successfully programming your remote:

- Carefully read all instructions on pages 17 and 18 before starting.
- Pay attention to the red light on the remote. You will need to watch for “blinks” in order to tell if you have completed a step correctly.
- Be patient. It may take a few tries to get this right.
- Step 3 is critical. Remember to press and hold the TV POWER or the MUTE button while searching for the right code for your particular brand of TV. As soon as the TV turns off or becomes muted, you will have to release the button within 2 seconds for the code to lock into the remote.



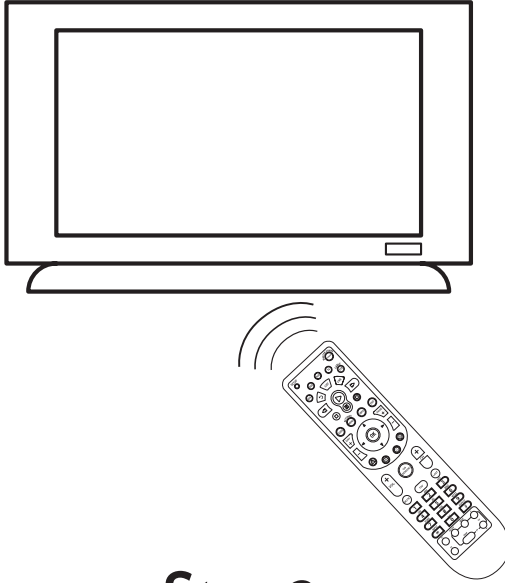




# Step 1

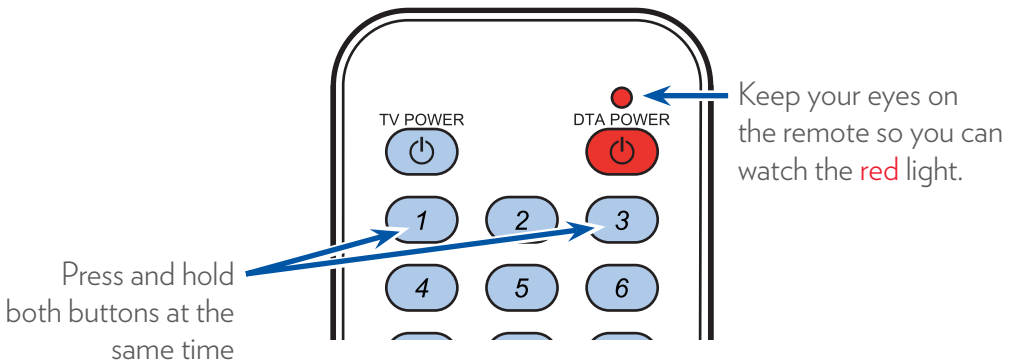
Turn on your TV using the buttons on the TV or the TV remote.

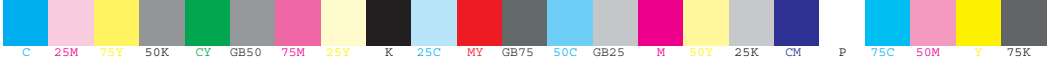
**Note:** Your TV must always be set to the proper channel (*Ch 3 or Ch 4*) or HDMI Input to match the output channel on the back of your HD-DTA.



# Step 2

Install the batteries (*included in your kit*) in your new remote control.  
Press and hold both Digit 1 and Digit 3 buttons together until the red light turns on.  
Release both buttons.





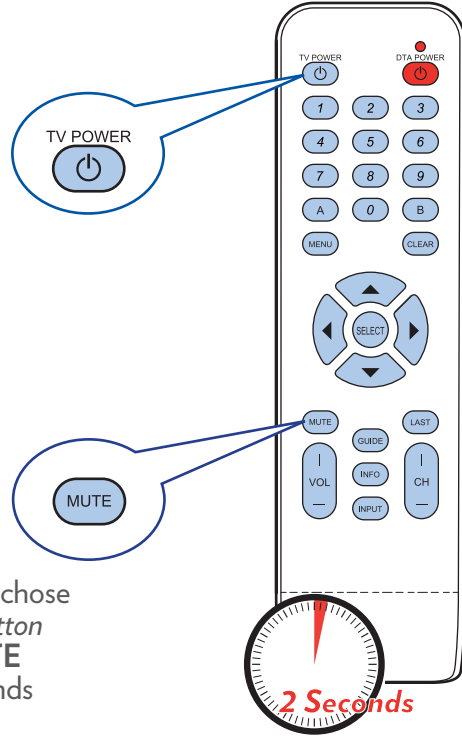
## Step 3

Point the new remote at the TV.

Press and hold **either** the **TV POWER** or the **MUTE** button.

The remote will start searching for the right code while you are holding one of these buttons.

When the TV follows the command you chose (*turns off if you held the **TV POWER** button or the sound goes off if you held the **MUTE** button*), release the button within 2 seconds to lock in the code.



The red light on the remote will blink twice.



## Step 4

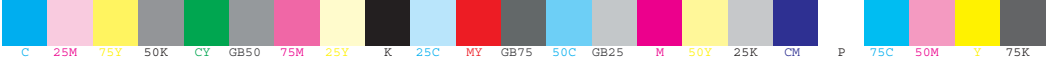
### Keys to success:

- *Carefully read all parts of step 3 before attempting.*
- *Be patient and hold down the TV POWER or MUTE button during the search for the right code.*

If you pressed **TV POWER** in Step 3, press **TV POWER** on your remote to turn on your TV.

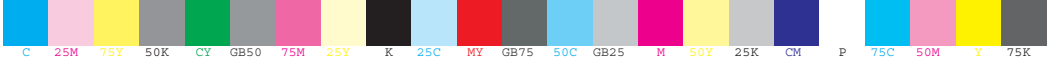
If you pressed **MUTE** in Step 3, press **MUTE** on the remote to restore the sound to your TV.

If your TV responds, then you have successfully programmed your remote.



**If you are not successful the first time,  
try again.  
If you still don't succeed, try this alternate method:**

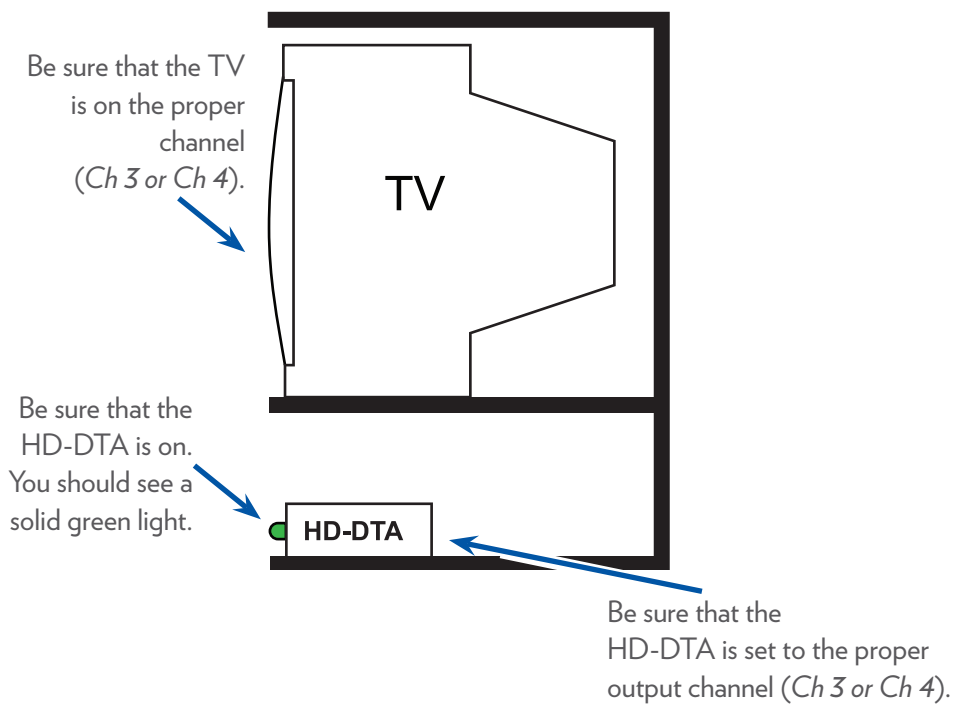
Find the small instruction booklet that came with the remote.  
Use those instructions to look up and enter the 4 digit code  
for your TV make and model.



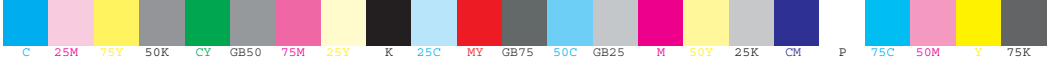
# HD-DTA Operation Guide

## Quick Troubleshooting Checklist

- *TV set on the proper output channel (Ch 3 or Ch 4) or HDMI Input*
- *HD-DTA light is on*



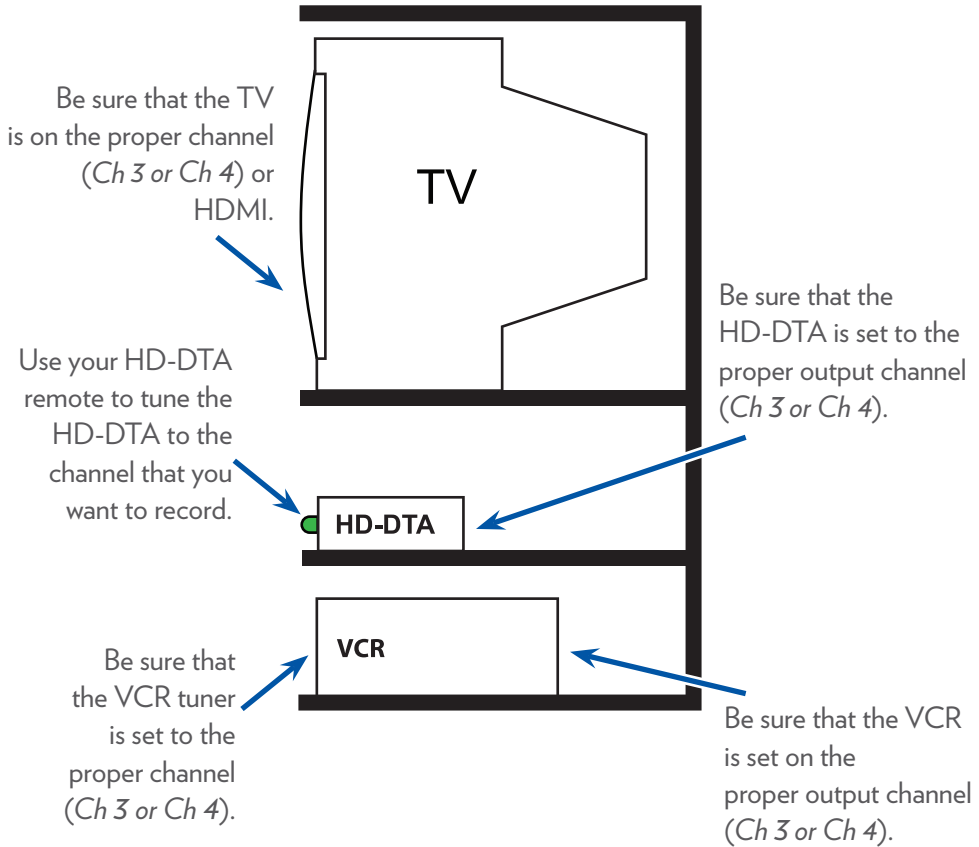
**Always use the remote that came with the HD-DTA to change channels and for volume control.**



# Using your HD-DTA and VCR

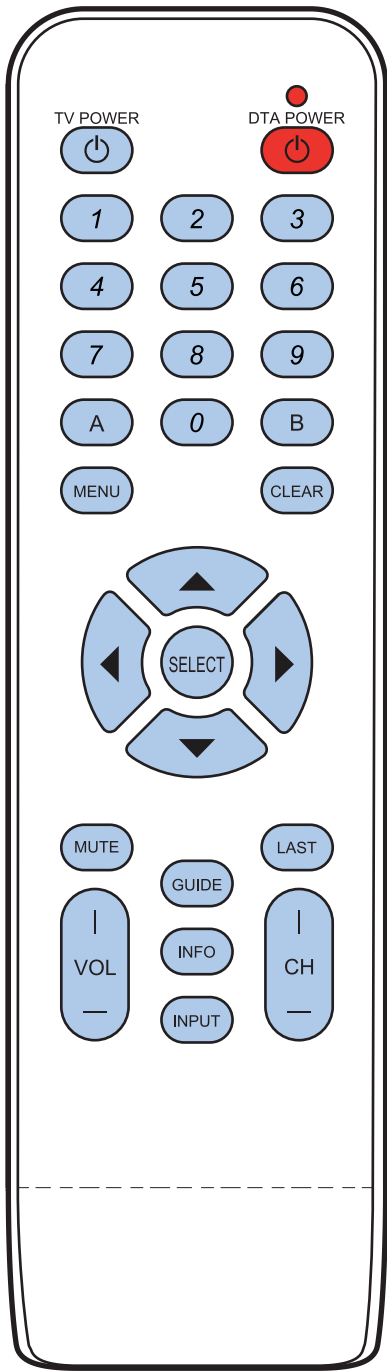
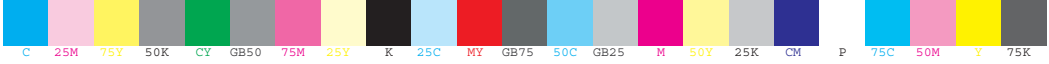
## Quick Troubleshooting Checklist

- TV set on the proper output channel (Ch 3 or Ch 4) or HDMI
- VCR set on the proper output channel (Ch 3 or Ch 4)
- Tune VCR to the same channel
- HD-DTA light is on
- Tune HD-DTA to channel that you want to record



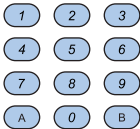


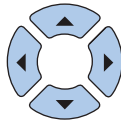




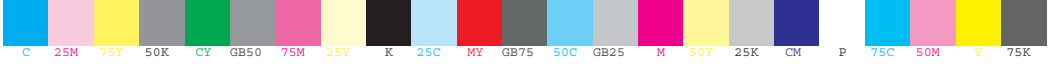
## Recording with your VCR:

TV on 3 and VCR on 3 if you selected 3 for your HD-DTA output channel  
 or  
 TV on 4 and VCR on 4 if you selected 4 for your HD-DTA output channel  
 Use your HD-DTA remote to tune the HD-DTA to the channel to be recorded.  
 If you are scheduling a recording you must leave your HD-DTA tuned to the channel that you want to record.






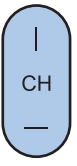


# Remote Operation Guide

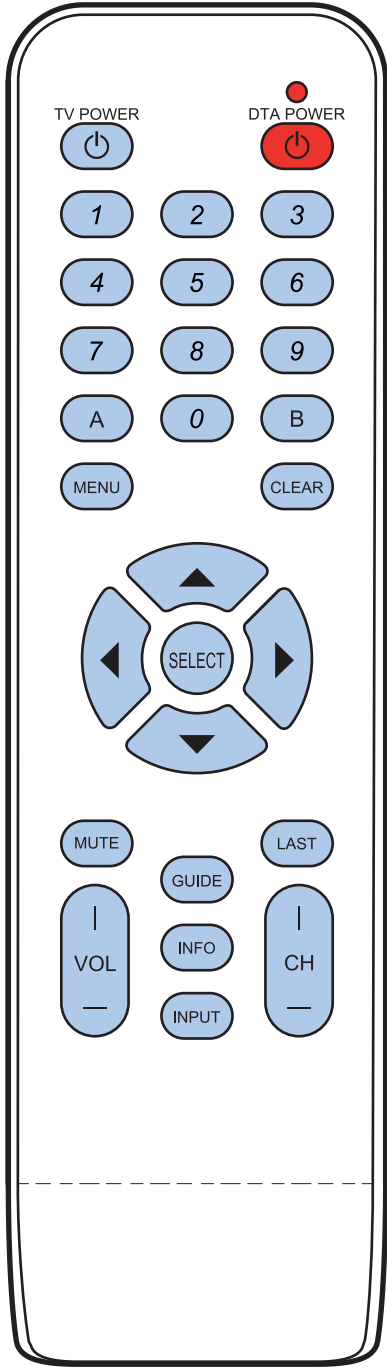
KEY	FUNCTION
 <p>TV POWER</p>	When the remote has been programmed to the TV, TV POWER will turn the TV on and off.
 <p>DTA POWER</p>	Use DTA POWER to turn the HD-DTA on and off.
	Use the key pad (0-9) to directly select the channels.
 <p>MENU</p>	Use MENU to display the Menu screen.
 <p>CLEAR</p>	Use CLEAR to erase the last digit you had entered.
	Use Navigation Keys to move the cursor UP, DOWN, LEFT, DOWN.
 <p>SELECT</p>	Use SELECT to select the item the cursor is pointing to.
 <p>MUTE</p>	Press MUTE once to turn the sound on or off.

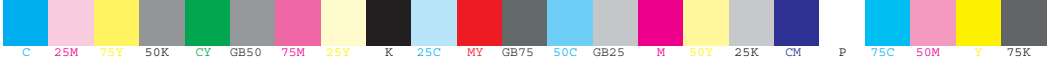


# Remote Operation Guide

KEY	FUNCTION
	Use LAST to recall the last channel.
	Use GUIDE to display the Electronic Program Guide.
	Use INFO to display information relating to current contents.
	Use INPUT to toggle among TV Input signals.
	Use VOL+ (or VOL-) to raise (or lower) the volume.
	Use CH+ (or CH-) to select the next higher (or lower) channel.







# RF Remote Pairing Process

When multiple Technicolor remotes work in a shared space, interference can result. To avoid this problem, the remote must be paired with the HD-DTA.

Follow these steps to “pair” a remote with a HD-DTA:

## Step 1

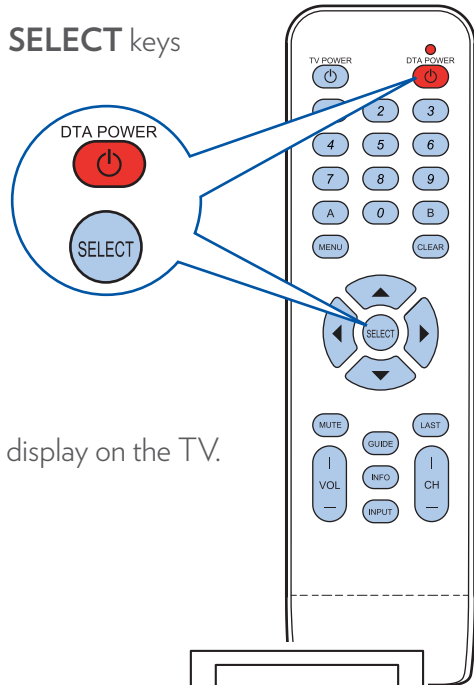
Make certain no other Technicolor remote is in the area.

Turn on your HD-DTA.

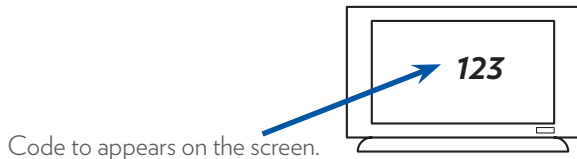
Turn on your TV using the buttons on the TV or the TV remote (not a HD-DTA remote in this instance).

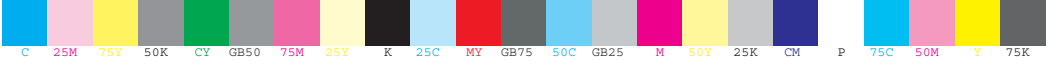
## Step 2

Press and hold both **DTA POWER** and **SELECT** keys at the same time.



Wait, then a 3 digit validation code will display on the TV.



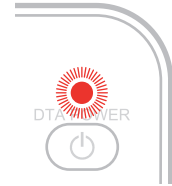


## Step 3

Release both remote keys.

Enter the 3 digit code using the HD-DTA remote.

When remote is successfully paired with the HD-DTA, the remote's red light will blink twice.





# Troubleshooting Guide

If the remote control does not work:

- *Check that the batteries still have charge and are inserted correctly.*
- *Make sure your remote can “see” the front of the HD-DTA.*

If there is no picture on the TV and the light on the HD-DTA is blinking:

- *Check your coaxial cables and make sure that they are attached correctly.*
- *Unplug the HD-DTA, plug it back in, then wait 5 minutes for it to reset.*

If there is no picture on the TV and the light on the HD-DTA is solid (*not blinking*):

- *Check that the TV is tuned to the proper channel (Ch 3 or Ch 4).*
- *If you are also connected to a VCR, try turning the VCR off.*
- *Check that the HD-DTA is connected directly to the cable provider outlet in your wall.*
- *Make sure that all cables are firmly connected.*
- *Check the input setting on your TV, make sure that it is set on ANT or CABLE.*



## If the audio is in a language that you did not expect to hear:

- *You may have changed to an alternate language setting – Press the “LANG” button on your remote control one or two times.*

## If the remote is turning the TV off and on and changing the channels but not changing the volume:

- *Your TV volume may have been turned all the way down or muted with the old TV remote. Refer to page 26.*

## If your HD-DTA is not coming on:

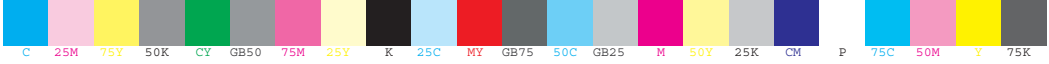
- *Make sure that the power cord is securely connected to the back of the HD-DTA.*
- *Make sure that the HD-DTA power cord is plugged into a working power outlet.*

## If you cannot get the HD-DTA remote programmed to your TV:

- *You may not be hitting the CH+ enough times.*
- *Be sure to push the “set” button within 5 seconds once your TV turns off.*
- *You may be hitting the CH+ once the TV has already turned off. Start over and press the button slowly.*
- *Try the alternate programming method on page 19.*

## VCR is not recording the right channel:

- *The VCR will only record the channel that the HD-DTA is tuned to. Set your TV and VCR to the proper channel (Ch 3 or Ch 4), then use the HD-DTA remote to tune the HD-DTA to the channel to be recorded.*



# DTA Operation Guide (Two remotes)

If you were unable to program your remote, you will need to use two remotes to operate your TV:  
the HD-DTA remote and the one that came with your TV.

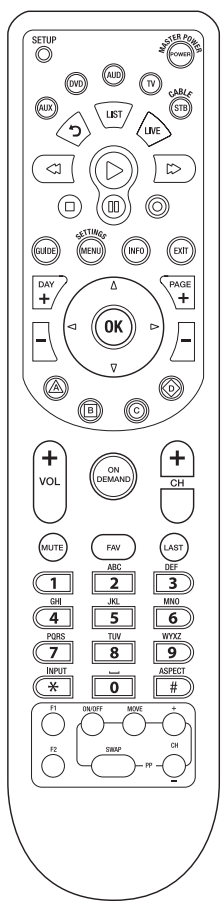
## Setting the remote volume

1. *Use the remote control that came with your TV to adjust the volume to a comfortable level. This should be the last time you'll use this remote for volume control.*
2. *Going forward use only your HD-DTA remote to adjust volume up or down.*

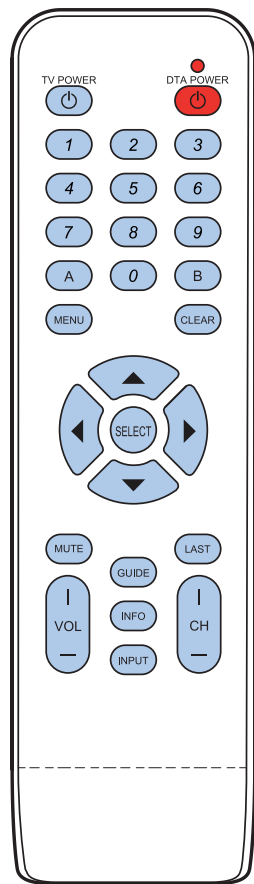
### **Caution:**

Don't use your TV remote to change channels.  
Your TV must always be set to the proper channel (*Ch 3 or Ch 4*) or you will see a snowy or blank screen.

# Using two remotes



Use the remote that came with your TV to turn the TV on and off.



Use your HD-DTA remote to change channels and adjust volume.

