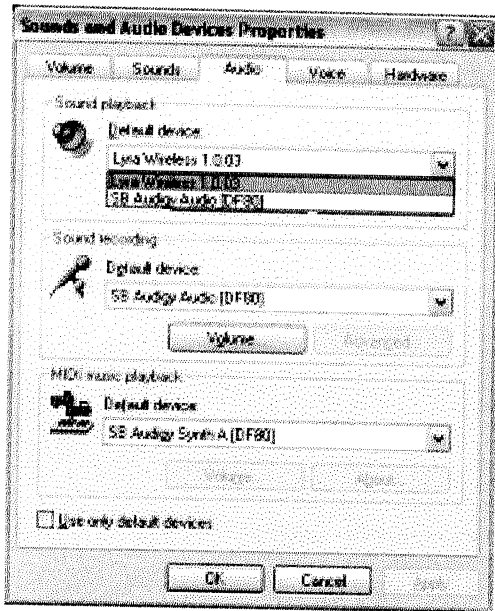


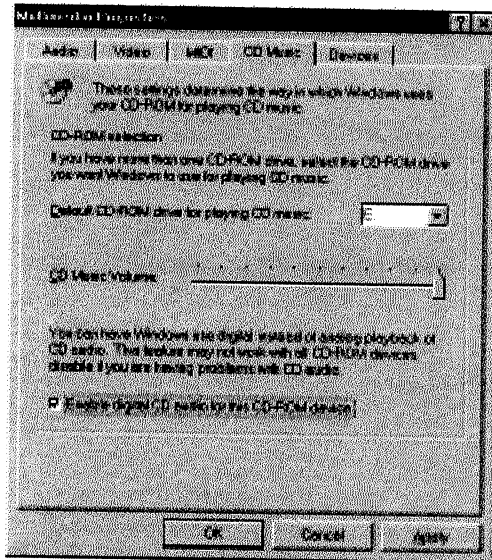
## Chapter 2: MusicMatch and the Lyra Wireless



The sound card settings screen for Windows XP.

If you have Windows XP

1. Click on the *Start* icon in the lower left-hand corner of your screen.
2. Select *Settings*, followed by *Control Panel* (the Control Panel window appears).
3. Double click on the *Sounds and Audio Devices* icon, and select the *Audio* tab.
4. Click on the arrow under *Default device* and make sure your sound card is selected.



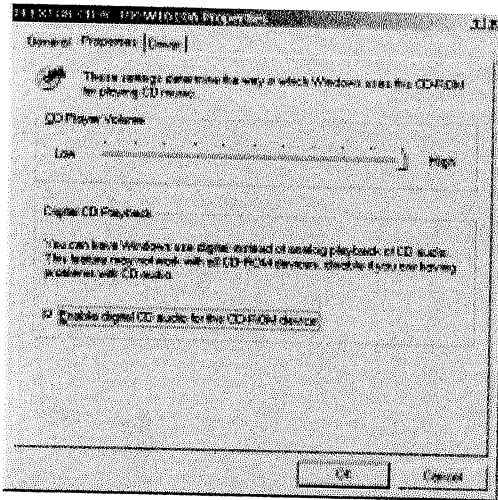
The CD-ROM settings screen for Windows 98SE and Me.

### CD-ROM Settings in Your Computer's Control Panel

If you have Windows 98SE or Me

1. Click on the *Start* icon in the lower left-hand corner of your screen.
2. Select *Settings*, followed by *Control Panel* (the Control Panel window appears).
3. Double click on the *Multimedia* icon, and select the *CD Music* tab.
4. Under *CD-ROM Selection*, click the box for *Enable digital CD audio for this CD-ROM device*.

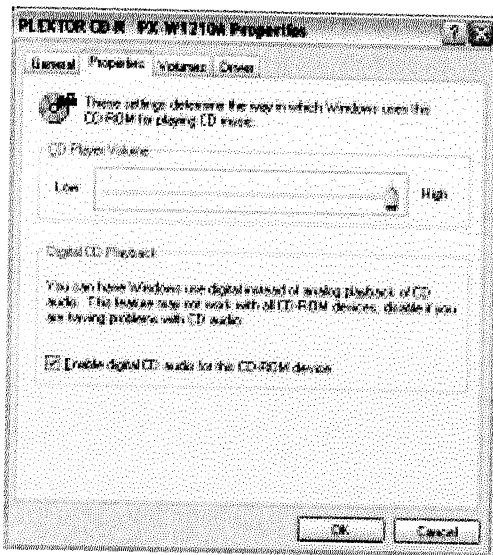
# Chapter 2: MusicMatch and the Lyra Wireless



The sound card settings screen for Windows 2000.

## If you have Windows 2000

1. Click on the *Start* icon in the lower left-hand corner of your screen.
2. Select *Settings*, followed by *Control Panel* (the Control Panel window appears).
3. Double click on the *Sounds and Multimedia* icon, and select the *Hardware* tab.
4. Select your CD-ROM in the list, and click *Properties* (the Properties window appears).
5. Click the *Properties* tab, then under *Digital CD Playback*, click the box for *Enable digital CD audio for this CD-ROM device*.



The sound card settings screen for Windows XP.

## If you have Windows XP

1. Click on the *Start* icon in the lower left-hand corner of your screen.
2. Select *Settings*, followed by *Control Panel* (the Control Panel window appears).
3. Double click on the *Sounds and Audio Devices* icon, and select the *Hardware* tab.
4. Select your CD-ROM in the list, and click *Properties* (the Properties window appears).
5. Click the *Properties* tab, then under *Digital CD Playback*, click the box for *Enable digital CD audio for this CD-ROM device*.

## More on MusicMatch

To let you get started listening to your music, we'll only mention the MusicMatch features that directly apply to the Lyra Wireless in this user's guide. For additional information about MusicMatch Jukebox features such as MusicMatch radio MX, creating music CDs, and all the music library features, go to:

- The MusicMatch tutorial on the Lyra Wireless Quick Start screen.
- Getting Started tips
- Online help ([www.musicmatch.com](http://www.musicmatch.com))

*Note: MusicMatch radio MX requires a subscription. See the MusicMatch website for details.*

# Chapter 2: MusicMatch and the Lyra Wireless

---

## **Install Batteries in the Remote**

1. Remove the battery compartment cover on the back of the remote.
2. Insert new batteries. Match the polarities (+ and -) on the batteries with the diagram on the remote.
3. Put the battery compartment cover back on the remote.

## **Important Battery Information**

- If you're not going to use the remote for a month or more, be sure to remove the batteries because they can leak and cause damage.
- Dispose of batteries in the proper manner, according to federal, state, and local regulations.
- Any battery may leak electrolyte if mixed with a different battery type, if inserted incorrectly, if all batteries are not replaced at the same time, if disposed of in fire, or if an attempt is made to charge a battery not intended to be recharged.
- Discard leaky batteries immediately. Leaking batteries can cause skin burns or other personal injury.

## **Point the Remote in the Right Direction to Control the Component You Want**

The software that comes with your Lyra Wireless enables you to use the remote to control many of the MusicMatch features. When you want the remote to operate MusicMatch, point it at the Lyra Wireless transmitter and press a button.

The remote control antenna of the Lyra Wireless system allows you to operate MusicMatch from another room, or even another floor of your house, so you don't have to worry about being right in front of the transmitter. For more information on how to use the remote with MusicMatch, go to the end of this chapter.

For other components (TV, VCR, etc.), the remote has to be pointed in the correct direction and toward the correct component in order for the remote control's signal to communicate with the sensor on the component. Make sure there is a clear path between the remote control and the component you want to operate, so the signal isn't blocked.

# Chapter 2: MusicMatch and the Lyra Wireless

---

## Playing Music through the Lyra Wireless

Now that you have connected your Lyra Wireless and installed all the necessary software, it's time to listen to some music.

1. Make sure the MusicMatch application is launched on your computer. If it's not, press the LYRA WIRELESS button on the remote.
2. Select the music source you want to play by pressing the corresponding button on the remote (FILE, RADIO, CD). If you choose FILE or CD, also select the song you want to play.
3. Turn on your audio receiver or other audio component and make sure it is on the right input mode for how you connected the Lyra Wireless receiver unit (AUX, INPUT, etc.). See your owner's manual for the audio system or audio component for more details.
4. Adjust the volume on your computer and audio receiver to a comfortable level.
5. Press PLAY (the song plays through your audio receiver).

## Fine Tuning the Lyra Wireless

To get the best signal reception, the Lyra Wireless units should face each other using an imaginary "line of sight." You can place the transmitter and receiver in separate rooms, or even separate floors of your house, so you don't have to worry about the units being close to each other. Other barriers in your house may affect the signal, so you may need to adjust the positions of the transmitter and receiver somewhat (see the diagrams in Chapter 1).

If the transmitter is sending the signal to the receiver properly, you should see some of the receiver's signal strength meter indicators light up.

### **If there is no signal at all**

Make sure the CHANNEL switch on the back of both units is set to the same number.

### **If the signal is weak or there is interference**

Try changing the channel on both units. Make sure the CHANNEL switch is set to the same channel on both units.

## Improving Performance

### **Orientation of the Antennas**

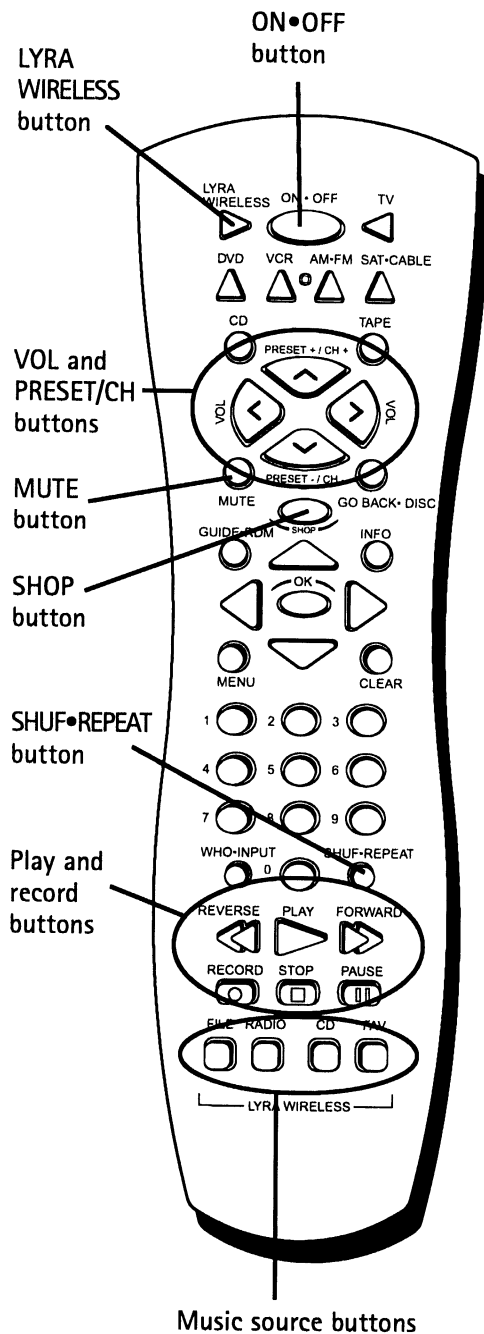
Proper orientation of the antennas is important for good performance (see the diagrams in Chapter 1). You may find that the system works better with one or more of the antennas in the horizontal (flat) position. The receiver and transmitter tend to operate better in high locations, where the signal path is wider and stronger (on a shelf, for example). Watch the receiver signal strength indicators for indication of signal strength.

You may also need to experiment with the position of the remote control antenna on the transmitter unit. See what position works the best for the remote control.

# Chapter 2: MusicMatch and the Lyra Wireless

## Using the Remote with MusicMatch

You can use the remote to control several of the functions of MusicMatch, including: launching the MusicMatch software; changing play modes (radio, music files, CDs); adjusting the volume; and changing tracks, playlists, and internet radio stations.



### Launching MusicMatch

You can start MusicMatch by pressing the LYRA WIRELESS button on the remote. When you are ready to close the application, just make sure the remote is in Lyra Wireless mode and press ON•OFF.

### Music Sources

The music source buttons (FILE, RADIO, and CD) let you select what music source you want to hear. Press FILE for files on your computer, RADIO for internet radio, and CD for an audio CD.

### Playing Music

You can play music from any selected source by pressing the PLAY button. To pause music, press PAUSE. To stop playing, press STOP.

### Changing Tracks and Scanning Within a Track

To skip to the next track, press the FORWARD button. To return the previous track, press REVERSE. To scan within a track, use the left and right arrow buttons.

### Adjusting the Volume

While the music is playing, use the VOL up and down buttons to adjust the volume. You can also adjust the volume on your audio receiver for even more volume. To mute the currently playing song, press MUTE.

### Changing Playlists and Internet Radio Stations

To change playlists or radio stations, use the PRESET +/CH+ or PRESET -/CH- buttons.

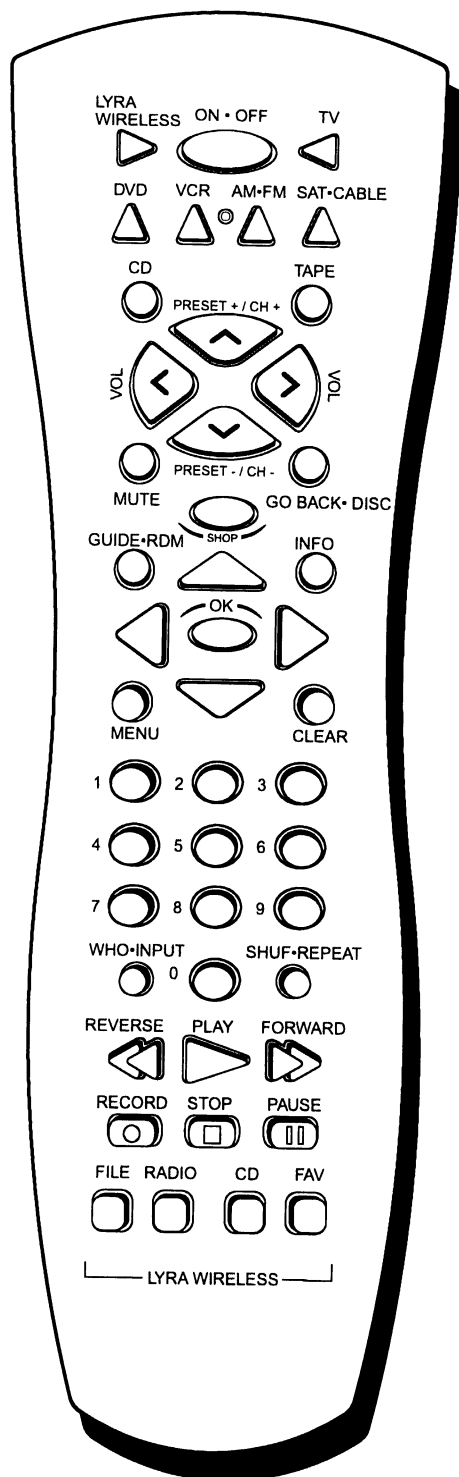
### Repeating a Playlist

To repeat the current playlist, press SHUF•REPEAT.

### Buying Music

To display the screen to buy music online, press SHOP.

## Chapter 2: MusicMatch and the Lyra Wireless



*Note: The TV, VCR, DVD and SAT•CABLE buttons also turn on most RCA, GE, and Proscan products.*

### Other Buttons on the Remote Control

**(0-9) Number buttons** Selects channels up to 99 by pressing two number buttons. Selects 3-digit channels by pressing and holding 1 until 1 -- appears on screen. Then press the other two numbers.

**AM•FM** Puts a compatible audio receiver in radio mode.

**CLEAR** Removes any menu or display from the screen and returns you to normal viewing. Resets the time counter to 0:00:00 for some compatible VCRs. Also clears on-screen menu item entries when setting the time and date or timer recordings.

**DVD** Turns on a compatible DVD player and puts the remote in DVD mode.

**FAV** For future use. No current function.

**FORWARD** Fast forwards the tape when the VCR is in stop mode. In DVD and VCR mode, searches forward if pressed during playback.

**GO BACK•DISC** Switches between the current and previous channels and changes discs on a compatible CD player.

**GUIDE•RDM** Displays the channel guide on some RCA, GE, and Proscan TVs and satellite receivers. Also puts a compatible CD player in random mode.

**INFO** Shows the status displays on screen of the VCR, TV, DVD player, etc. (whichever component is set as the remote control's active device).

**MENU** Displays the on-screen menu system.

**MUTE** Reduces the volume to a minimum level on some compatible TVs.

**OK** In on-screen menus, this button acts as an *Enter* button (used in conjunction with the remote control's arrow buttons). This button selects the highlighted on-screen menu choice.

**PRESET CH + and -** Selects next higher or lower channel in the channel list for some compatible components.

**RECORD** In VCR mode, starts record mode.

**REVERSE** Rewinds the tape when the VCR is in stop mode. In DVD and VCR mode, searches backward through a tape during playback mode.

**SAT•CABLE** Turns on a compatible RCA, GE, or Proscan satellite receiver and can be programmed to operate different brands of receivers.

## Chapter 2: MusicMatch and the Lyra Wireless

---

**SHUF•REPEAT** Puts a compatible CD player or DVD player in repeat or shuffle mode.

**STOP** Stops the current function (record, playback, rewind, etc).

**TAPE** Puts a compatible audio receiver in tape mode.

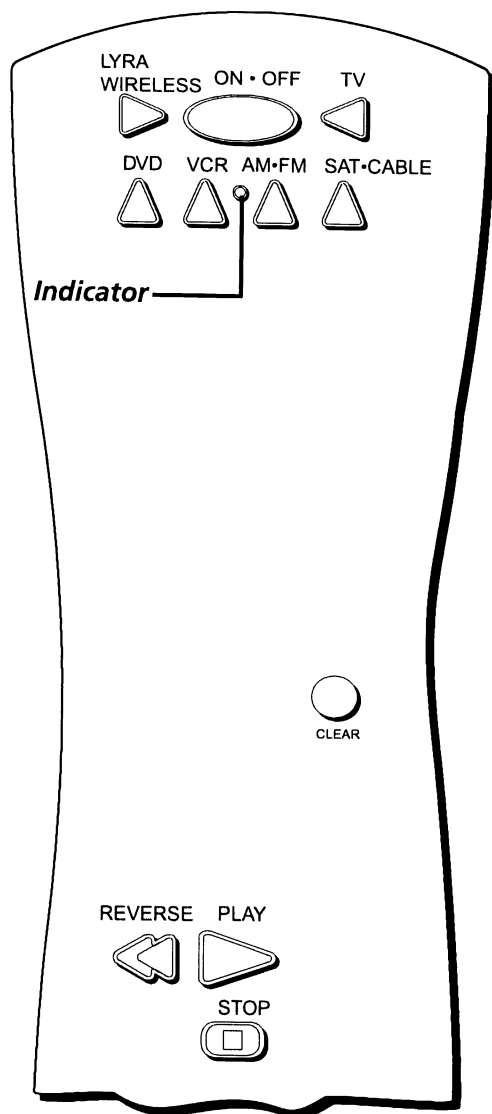
**TV** Turns on a compatible RCA, GE, or Proscan TV and puts the remote in TV mode. Also used with the **ON•OFF** button to turn on/off a compatible TV.

**VCR** Turns on a compatible VCR and puts the remote control in VCR mode.

**VOL < and >** Raises and lowers the volume of some compatible TVs.

**WHO• INPUT** In VCR or TV mode, selects between the Video Input Channels and the tuner. Video Input Channel refers to the signal coming from the component connected to audio/video input jacks on the VCR or TV.

# Chapter 2: MusicMatch and the Lyra Wireless



You'll use these buttons when you program the remote.

*Important: The remote may not be compatible with all models of all brands of components. It also may not operate all functions of the remote that came with your component.*

## Tip

To stop the automatic code search without programming any components, press and hold CLEAR until the indicator on the remote turns off.

## Programming the Remote to Operate Other Components

The universal remote can be programmed to operate most brands of remote controllable components. The remote is already programmed to operate most RCA, GE, and Proscan components.

### Find Out If You Need to Program the Remote

To determine whether the universal remote needs to be programmed for your component, turn the component ON. For example, to program the remote for a TV, turn on the TV. Point the remote at the TV, and press the TV button. Then press ON•OFF or CH + (channel up) or CH – (channel down) to see if the TV responds to the remote commands. If the component does not respond, the remote needs to be programmed.

### Programming the Remote

There are two ways to program the remote control:

- automatic code search
- direct entry

#### Using Automatic Code Search

The following instructions can be used to program the remote to operate each of your components. If you want to stop the automatic code search without programming any of your components, press CLEAR until the indicator on the remote turns off.

1. Turn on the component you want to operate (TV, Cable Box, etc.)
2. Press and hold the component button you want to program (TV, etc.). While holding the component button, press and hold ON•OFF until the indicator on the remote turns on, then release both buttons.
3. Point the remote at the component. Press and release PLAY, then wait 5 seconds or until the indicator on the remote stops flashing.

At this point the remote is searching for the correct code to program. If, after 5 seconds, the component you want to operate does not turn off, press PLAY again to tell the remote to search the next set of codes.

Continue pressing PLAY until the component turns off or you have searched through all of the codes. There are 20 total sets of codes. If the component does not turn off after pressing PLAY 20 times, then the remote can't be programmed to operate that component.



# Chapter 2: MusicMatch and the Lyra Wireless

---

---

## Important

*You must continue pressing the component button while you enter the code.*

*Let's say you have a Zenith TV. To program the universal remote to operate the VCR, you would:*

*Press and hold the TV button while you enter the first code listed for Zenith in the TV Codes column.*

*Release the TV button. Press ON•OFF to see if the TV responds. If it doesn't, follow the same steps, but enter the second code for Zenith TVs instead of the first.*

---

---

## Note

*Some of the remote's buttons might operate differently for other components, especially when you're using another component's menu system.*

---

If the component you want to control *does* turn off:

1. Press and release REVERSE, then wait 2 seconds. Repeat this step until the device turns back ON.
2. To finish, press and hold STOP until the indicator on the remote turns off.

## Using Direct Entry

1. Turn on the component to be programmed.
2. Look up the brand and code number(s) for the component on the code list in this section.
3. Point the remote at the component.
4. Press and hold the component button you want to program on the remote.
5. Enter the 4-digit code from the remote control code list on the following pages. If the indicator flashes, you have either entered an invalid code or the button isn't programmable.
6. Release the component button, and then press ON•OFF to see if the component responds to the command. If it doesn't, try pressing the component button and then ON•OFF again.
  - If you get no response, repeat these steps using the next code listed for your brand, until the component responds to the remote commands.
  - If you try all the codes for your component brand and none work, try the automatic code search method. If automatic code search doesn't find the code, the remote is not compatible with your component.

## How to Use the Remote After You've Programmed It

Because this universal remote can control several different components (TV, DVD, VCR, satellite receiver, etc.) it uses operational modes triggered by the component buttons. For example, if you want the remote to control the TV, you would press the TV button to put the remote into TV mode before you could control the TV.

1. Press the appropriate component button (DVD, TV, VCR, SAT•CABLE, AUX) to set the remote to control the component.
2. Press ON•OFF to turn the component ON or OFF.
3. Use the remote buttons that apply to that component.

*Notes:*

- *The remote may not be compatible with all brands and models of components. It also may not operate all functions of the remote that came with your component.*
  - *If you keep pressing buttons and nothing happens, the remote is probably in the wrong mode. You must press the component button that matches the component you want to operate (i.e., if you want to operate the VCR, press VCR on the remote control to put the remote in VCR mode.)*
-

# Chapter 2: MusicMatch and the Lyra Wireless

---

## Code List

### TV Codes

---

Abex .....	1172	Hitachi .....	1004, 1006, 1012, 1013, 1014, 1059, 1060, 1061, 1135, 1136, 1137, 1138, 1139, 1140, 1141, 1142, 1143, 1144, 1145, 1146, 1148, 1150, 1179, 1198, 1199
Admiral .....	1001, 1173, 1211	IMA .....	1038
Adventura .....	1174	Infinity .....	1062
Aiko .....	1016	Janeil .....	1174
Akai .....	1002	JBL .....	1062
Alleron .....	1046	JCB .....	1002
Amtron .....	1038	JC Penney ...	1000, 1004, 1005, 1006, 1008, 1022, 1052, 1054, 1058, 1063, 1064, 1072, 1087, 1105, 1128, 1171, 1172, 1181, 1201
Anam National .....	1003, 1038, 1192, 1193, 1194	Jensen .....	1004, 1006
AOC .....	1004, 1005, 1006, 1007, 1175, 1176, 1195	JVC .....	1012, 1013, 1014, 1054, 1060, 1065, 1066, 1067, 1157, 1158, 1159, 1182
Audiovox .....	1038	Kawasho .....	1002, 1004, 1006
Belcor .....	1004	Kenwood .....	1004, 1006, 1019
Bell & Howell .....	1001, 1083, 1162	Kloss Novabeam .....	1068, 1069, 1174, 1183
Bradford .....	1038	KTV .....	1038, 1070, 1171, 1177
Brokwood .....	1004	Loewe .....	1062
Candle .....	1004, 1006, 1008, 1174	Logik .....	1083
Celebrity .....	1002	Luxman .....	1004, 1006
Centurion .....	1009	LXI .....	1000, 1006, 1049, 1062, 1071, 1072, 1073, 1162, 1181, 1207
Citizen .....	1004, 1006, 1008, 1016, 1038, 1105, 1171, 1174, 1177	Magnavox .....	1004, 1006, 1008, 1019, 1062, 1068, 1069, 1075, 1076, 1077, 1088, 1130, 1131, 1132, 1133, 1134, 1183, 1219, 1235
Colortyme .....	1004, 1006, 1010	Majestic .....	1083
Concerto .....	1004, 1006	Marants .....	1062
Contec/Cony .....	1012, 1013, 1014, 1038	Marantz .....	1004, 1006, 1062, 1078
Craig .....	1038	Megatron .....	1006, 1059
Crown .....	1038, 1171	Memorex .....	1001, 1006, 1082, 1083, 1162
Curtis-Mathes .....	1000, 1004, 1006, 1015, 1105, 1162, 1171, 1212	MGA .....	1004, 1005, 1006, 1019, 1022, 1051, 1079, 1080, 1082
CXC .....	1038	Midland .....	1054, 1151, 1171, 1172, 1181
Daewoo .....	1004, 1005, 1006, 1016, 1017, 1018, 1127, 1171, 1196	Minutub .....	1052
Daytron .....	1004, 1006, 1171	Mitsubishi .....	1004, 1005, 1006, 1019, 1022, 1051, 1079, 1080, 1081, 1082, 1125
Dimensia .....	1000	Montgomery Ward .....	1083
Dumont .....	1004, 1151	Motorola .....	1003, 1173
Dynatech .....	1178	MTC .....	1004, 1005, 1006, 1105
Electronband .....	1002	Multitech .....	1038
Electrohome .....	1003, 1004, 1006, 1019, 1020, 1022	Multivision .....	1084
Emerson .....	1004, 1006, 1012, 1023, 1024, 1025, 1026, 1027, 1028, 1029, 1030, 1031, 1032, 1033, 1034, 1035, 1036, 1037, 1038, 1039, 1041, 1042, 1043, 1044, 1046, 1047, 1123, 1124, 1162, 1171, 1177, 1179, 1191, 1208	NAD .....	1006, 1071, 1072, 1185
Envision .....	1004, 1006	NEC .....	1003, 1004, 1005, 1006, 1200
Fisher .....	1048, 1049, 1051, 1162, 1180	Nikko .....	1006, 1016
Fujitso .....	1046	NTC .....	1016
Funai .....	1038, 1046	Onwa .....	1038
Futuretec .....	1038	Optimus .....	1185
GE .....	1000, 1003, 1004, 1006, 1022, 1052, 1054, 1055, 1087, 1164, 1165, 1166, 1167, 1168, 1181, 1213	Optonica .....	1095, 1173
Gibraltar .....	1004, 1151	Orion .....	1035, 1191
Goldstar .....	1004, 1005, 1006, 1012, 1019, 1056, 1057, 1058, 1155, 1156, 1171, 1172	Panasonic .....	1003, 1054, 1062, 1170, 11214
Grundy .....	1038, 1046, 1171	Philco .....	1003, 1004, 1005, 1006, 1008, 1012, 1019, 1062, 1068, 1069, 1075, 1077, 1183
Hallmark .....	1004, 1006	Philips .....	1003, 1004, 1008, 1012, 1019, 1062, 1068, 1069, 1075, 1076, 1086, 1087, 1088, 1089
Harvard .....	1038	Pilot .....	1004, 1171

# Chapter 2: MusicMatch and the Lyra Wireless

Pioneer	1004, 1006, 1090, 1091, 1092, 1179, 1185
Portland	1004, 1005, 1006, 1016, 1171
Price Club	1105
Prism	1054
ProScan	1000, 1181
Proton	1004, 1006, 1012, 1093
Pulsar	1004, 1151
Quasar	1003, 1054, 1070, 1094
Radio Shack/Realistic	1000, 1004, 1006, 1012, 1038, 1049, 1095, 1162, 1171, 1172
RCA	1000, 1003, 1004, 1005, 1006, 1007, 1019, 1096, 1098, 1099, 1100, 1101, 1102, 1103, 1129, 1179, 1181, 1187, 1188, 1190, 1202, 1203, 1215, 1233
Runco	1151
Sampo	1004, 1006, 1171, 1172
Samsung	1004, 1005, 1006, 1012, 1015, 1019, 1104, 1105, 1106, 1171, 1172, 1204
Samsux	1171
Sansui	1191
Sanyo	1004, 1048, 1049, 1080, 1107, 1108, 1162, 1169, 1180
Scotch	1006
Scott	1004, 1006, 1012, 1024, 1035, 1038, 1046
Sears	1000, 1004, 1006, 1013, 1014, 1019, 1046, 1048, 1049, 1051, 1066, 1071, 1072, 1109, 1110, 1162, 1180, 1181, 1189
Sharp	1004, 1006, 1012, 1029, 1095, 1111, 1112, 1113, 1122, 1171, 1173
Shogun	1004
Signature	1001, 1083, 1115
Simpson	1008
Sony	1002, 1205, 1216, 1218
Soundesign	1004, 1006, 1008, 1038, 1046
Squareview	1189
SSS	1004, 1038
Starlite	1038
Supre-Macy	1174
Supreme	1002
Sylvania	1004, 1006, 1008, 1019, 1062, 1068, 1069, 1075, 1076, 1077, 1088, 1116, 1161, 1183
Symphonic	1033, 1038, 1189
Tandy	1173
Tatung	1003
Technics	1054
Techwood	1004, 1006, 1054
Teknika	1004, 1005, 1006, 1008, 1012, 1013, 1014, 1016, 1038, 1046, 1076, 1082, 1083, 1105, 1170, 1171
Telecaption	1117
TMK	1004, 1006
Toshiba	1049, 1071, 1072, 1105, 1109, 1117, 1118, 1160, 1162
Totevision	1171
Universal	1052, 1087
Victor	1066, 1182
Vidtech	1004, 1005, 1006
Viking	1174
Wards	1000, 1001, 1004, 1005, 1006, 1019, 1024, 1033, 1046, 1052, 1062, 1068, 1069, 1075, 1076, 1083, 1087, 1088, 1095, 1119, 1120
Yamaha	1004, 1005, 1006, 1019
Zenith	1004, 1083, 1151, 1152, 1153, 1154, 1210, 1217

## VCR Codes

Admiral	2132
Adventura	2026
Aiko	2027
Aiwa	2026
Akai	2003, 2004, 2005, 2007, 2008, 2111, 2112, 2113
American High	2021
Asha	2013
Audio Dynamics	2009, 2010
Audiovox	2014
Bell & Howell	2011
Beaumarck	2013
Broksonic	2012, 2025
Calix	2014
Candle	2013, 2014, 2015, 2016, 2017, 2018, 2019
Canon	2021, 2022, 2114
Capehart	2020, 2110
Carver	2062
CCE	2027, 2061
Citizen	2013, 2014, 2015, 2016, 2017, 2018, 2019, 2027
Colortyme	2009
Colt	2061
Craig	2013, 2014, 2023, 2061
Curtis-Mathes	2000, 2009, 2013, 2016, 2018, 2021, 2022, 2024, 2115, 2131
Cybernex	2013
Daewoo	2015, 2017, 2019, 2025, 2026, 2027, 2028, 2110
Daytron	2110
DBX	2009, 2010
Dimensia	2000, 2131
Dynatech	2026
Electrohome	2014, 2029
Electroponic	2014
Emerson	2012, 2014, 2015, 2021, 2024, 2025, 2026, 2029, 2030, 2031, 2032, 2033, 2034, 2035, 2036, 2037, 2038, 2039, 2040, 2041, 2042, 2044, 2045, 2046, 2047, 2065, 2113, 2116, 2117, 2130
Fisher	2011, 2023, 2048, 2049, 2050, 2051, 2052, 2118
Fuji	2021, 2119
Funai	2026
Garrard	2026
GE	2000, 2001, 2013, 2021, 2022, 2053, 2115, 2120, 2131
Goldstar	2009, 2014, 2018, 2054, 2131
Gradiente	2026
Harley Davidson	2026
Harman Kardon	2009
Harwood	2061
Headquarter	2011
Hitachi	2055, 2056, 2057, 2107, 2111, 2120, 2122
Hi-Q	2023
Instant Replay	2021
JCL	2021
JC Penney	2009, 2010, 2011, 2013, 2014, 2021, 2022, 2055, 2056, 2058, 2059, 2060, 2107, 2118

# Chapter 2: MusicMatch and the Lyra Wireless

---

Jensen ..... 2055, 2056, 2111  
JVC ..... 2009, 2010, 2011, 2018, 2111, 2123  
Kenwood ..... 2009, 2010, 2011,  
..... 2016, 2018, 2111, 2123  
KLH ..... 2061  
Kodak ..... 2014, 2021  
Lloyd ..... 2026  
Logik ..... 2061  
LXI ..... 2014  
Magnavox ..... 2021, 2022, 2062,  
..... 2063, 2104, 2105, 2108, 2124  
Magnin ..... 2013  
Marantz ..... 2009, 2010, 2011,  
..... 2016, 2018, 2021, 2062, 2064  
Marta ..... 2014  
Masushita ..... 2021  
Mei ..... 2021  
Memorex ..... 2011, 2013,  
..... 2014, 2021, 2023, 2026, 2104, 2132  
MGA ..... 2029, 2065, 2113  
MGN Technology ..... 2013  
Midland ..... 2053  
Minolta ..... 2055, 2056, 2107  
Mitsubishi .... 2029, 2055, 2056, 2065, 2066, 2067, 2068,  
.... 2068, 2070, 2071, 2072, 2073, 2074, 2106, 2113, 2123  
Montgomery Ward ..... 2075, 2132  
Motorola ..... 2021, 2132  
MTC ..... 2013, 2126  
Multitech ..... 2013, 2016, 2026, 2053, 2061  
NEC ..... 2009, 2010, 2011, 2016, 2018,  
..... 2064, 2076, 2078, 2079, 2111, 2123  
Nikko ..... 2014  
Noblex ..... 2013  
Olympus ..... 2021  
Optimus ..... 2014, 2132  
Optonica ..... 2096  
Panasonic ..... 2021, 2022, 2109, 2125, 2126, 2127  
Pentax ..... 2016, 2055, 2056, 2107, 2120  
Pentex Research ..... 2018  
Philco ..... 2021, 2022, 2062, 2063  
Philips ..... 2021, 2062, 2096, 2124  
Pilot ..... 2014  
Pioneer ..... 2010, 2055, 2080, 2081, 2123  
Portland ..... 2016, 2017, 2019, 2110  
PROSCAN ..... 2000, 2001, 2131  
Protec ..... 2061  
Pulsar ..... 2104  
Quarter ..... 2011  
Quartz ..... 2011  
Quasar ..... 2021, 2022, 2125  
RCA ..... 2000, 2001, 2003, 2013, 2021, 2055, 2056,  
..... 2082, 2083, 2084, 2085, 2086, 2087, 2088, 2089,  
..... 2090, 2091, 2107, 2115, 2120, 2125, 2131, 2133  
Radioshack/Realistic ..... 2011, 2013, 2014, 2021,  
..... 2022, 2023, 2026, 2029, 2049, 2050, 2096, 2132  
Radix ..... 2014  
Randex ..... 2014  
Ricoh ..... 2128  
Runco ..... 2104  
Samsung ..... 2005, 2013, 2015, 2033, 2053, 2112  
Sanky ..... 2104, 2132  
Sansui ..... 2010, 2092, 2111, 2123  
Sanyo ..... 2011, 2013, 2023  
Scott ..... 2012, 2015, 2025, 2032  
..... 2038, 2065, 2093, 2116

Sears ..... 2011, 2014, 2021, 2023, 2048,  
..... 2049, 2050, 2051, 2055, 2056, 2107, 2118  
Sharp ..... 2017, 2029, 2094, 2095, 2096, 2097, 2131  
Shintom ..... 2004, 2056, 2061, 2098  
Shogun ..... 2013  
Signature ..... 2131  
Singer ..... 2021, 2061, 2128  
Sony ..... 2004, 2098, 2099, 2119  
STS ..... 2021, 2107  
Sylvania ..... 2021, 2022,  
..... 2026, 2062, 2063, 2065, 2124  
Symphonic ..... 2026  
Tandy ..... 2011  
Tashiko ..... 2014  
Tatung ..... 2111  
TEAC ..... 2026, 2085, 2111  
Technics ..... 2021, 2109  
Teknika ..... 2014, 2021, 2026, 2100, 2129  
TMK ..... 2013, 2024, 2047  
Toshiba ..... 2015, 2049, 2051,  
..... 2055, 2065, 2093, 2116  
Totevision ..... 2013, 2014  
Unitech ..... 2013  
Vector Research ..... 2009, 2010, 2015, 2016  
Victor ..... 2010  
Video Concepts ..... 2009, 2010, 2015, 2016, 2113  
Videosonic ..... 2013  
Wards ..... 2013, 2014, 2015, 2021,  
..... 2023, 2026, 2029, 2055, 2056, 2061,  
..... 2096, 2101, 2102, 2103, 2107, 2116, 2132  
XR-1000 ..... 2021, 2026, 2061  
Yamaha ..... 2009, 2010, 2011, 2018, 2111  
Zenith ..... 2004, 2098, 2104, 2119, 2128

## Cable Box Codes

---

ABC ..... 5002, 5003, 5004, 5005, 5006, 5007, 5053  
Antronix ..... 5008, 5009  
Archer ..... 5008, 5009, 5010, 5011  
Cabletenna ..... 5008  
Cableview ..... 5008  
Century ..... 5011  
Citizen ..... 5011  
Colour Voice ..... 5012, 5013  
Comtronics ..... 5014, 5015  
Contec ..... 5016  
Eastern ..... 5017  
Garrard ..... 5011  
GC Electronics ..... 5009  
Gemini ..... 5018, 5019, 5049  
General Instrument ..... 5003  
Hamlin ..... 5020, 5021, 5022, 5035, 5045  
Hitachi ..... 5003  
Hytex ..... 5002  
Jasco ..... 5011  
Jerrold .... 5003, 5005, 5007, 5018, 5023, 5024, 5046,  
..... 5053  
Magnavox ..... 5025  
Memorex ..... 5026  
Movie Time ..... 5002, 5027, 5028  
NSC ..... 5002, 5027, 5028  
Oak ..... 5002, 5016, 5029  
Panasonic ..... 5048, 5052  
Paragon ..... 5026

# Chapter 2: MusicMatch and the Lyra Wireless

Philips	5011, 5012, 5013, 5019, 5025, 5030, 5031, 5032
Pioneer	5033, 5034
Pulsar	5026
RCA	5047, 5049, 5052
Realistic	5009, 5049
Regal	5022, 5035
Regency	5017
Rembrandt	5003
Runco	5026
Samsung	5014, 5034
Scientific Atlanta	5006, 5036, 5037, 5038
Signal	5014, 5018
Signature	5003
SL Marx	5014
Sprucer	5052
Starcom	5007, 5018, 5053
Stargate	5014, 5018
Starquest	5018
Tandy	5040
Televue	5014
Tocom	5004, 5023, 5041
Toshiba	5026
Tusa	5018
TV86	5027
Unika	5008, 5009, 5011
United Artists	5002
United Cable	5053
Universal	5008, 5009, 5010, 5011
Videoway	5044
Viewstar	5015, 5025, 5027, 5040
Zenith	5026, 5050, 5051

## Satellite Receiver Codes

Alphastar	5079
Chapparral	5056, 5057
Dishnet	5078
Drake	5058, 5059
Echostar	5089
GE	5000, 5001
General Instruments	5060, 5061, 5062
Hitachi	5083, 5084
Hughes	5077, 5090
JVC	5082
Panasonic	5075
Philips	5085
Primestar	5076
PROSCAN	5000, 5001
RCA	5000, 5001, 5071, 5080, 5081
Realistic	5063
Sony	5072
STS1	5064
STS2	5065
STS3	5066
STS4	5067
Toshiba	5068, 5073
Uniden	5086

## Audio Codes

### RCA and Dimensia

AM/FM	4003, 4270
AUX	4004

Phono	4005
Tape	4006
CD	4007, 4190, 4211

### Receivers

Aiwa	4261, 4262, 4263, 4264, 4265, 4266, 4267, 4277
Denon	4283
Harman Kardon	4276
JVC	4268
JVL	4276
Kenwood	4269
Onkyo	4278
Optimus	4284
Panasonic	4279, 4280
Pioneer	4275
RCA	4270
Sherwood	4282
Sony	4271, 4272, 4281
Technics	4279, 4280
Wards	4275
Yamaha	4274, 4275

### CD Players

ADC	4200, 4201, 4220
Aiwa	4175, 4203
Akai	4205
Denon	4208
Dynatech	4177
Emerson	4178
Fisher	4179, 4212, 4213
GE	4216
Hitachi	4180
JVC	4181, 4221
Kenwood	4183, 4222, 4224
Luxman	4225
Marantz	4185, 4226
Mitsubishi	4229, 4230
MCS	4228
Nakamichi	4232, 4233
NEC	4184
Onkyo	4186, 4234, 4235
Optimus	4237, 4238, 4239
Panasonic	4188
Pioneer	4189, 4240
RCA	4190, 4211
Sanyo	4250
Sears	4207
Sherwood	4243
Sony	4195, 4209, 4244
Teac	4245, 4246, 4247
Technics	4197
Toshiba	4231
Yamaha	4198, 4199, 4268

This page intentionally left blank.

## **Chapter 3: Additional Information**

### **Troubleshooting**

Most problems you encounter with your Lyra Wireless can be corrected by consulting the following troubleshooting list.

*Note: If you prefer, we can provide you with the name of an Authorized Service Representative who will visit your home for a fee to install your electronic entertainment system and to instruct you in its operation. For details about this service, call 1-800-206-3359 or visit rca.com.*

### **General Problems**

---

#### **Lyra Wireless won't turn on**

- Make sure both the transmitter and receiver are plugged in.
- Check the wall receptacle (or extension cord) to make sure it is "live" by plugging in something else.

#### **No sound**

- Make sure all the connections are snug between the Lyra Wireless receiver and your audio receiver (or other component).
- Make sure the music is not being sent to your sound card. In the MusicMatch menu, select *Options*, then *Player*, then *Settings*. Under Output Control, make sure *USB Audio Device* is selected (or *Lyra Wireless* for Windows XP). If it wasn't already selected, you may have to restart MusicMatch to activate the new setting. Once you restart, try playing the music again. You should hear audio play through your audio system (not from your PC). The normal Windows sound prompts should still play through your PC.
- Make sure the correct input mode or channel is selected on your audio system. In order for your audio system to receive the sound coming from the Lyra Wireless, the correct input mode must be selected (AUX, INPUT, etc.). See your owner's manual for the audio system or component for more details.

#### **The chime sound and Windows prompts are playing through the Lyra Wireless**

- Make sure your sound playback settings are correct. If all sounds are playing through your audio system, including Windows sound prompts, you need to set the Windows prompts to only play through your sound card. See page 16 for details.

#### **Poor reception**

- Make sure the antenna is positioned correctly. Proper orientation of the antenna is important for good performance. You may find that the system works better with one or more of the antennas in the horizontal (flat) position. The receiver and transmitter tend to operate better in high locations, where the signal path is wider and stronger (on a shelf, for example). Watch the receiver signal strength indicators for indication of signal strength.

## Chapter 3: Additional Information

---

- Your cordless phone or baby monitor may be causing interference. The transmitter and receiver have 4 RF channels to choose from, but if you have a 900Mhz cordless phone or baby monitor, you should pick a channel that doesn't interfere with the frequency the phone/monitor transmits on. Channel 4 is typically "phone-free". If you have interference, leave your cordless phone or monitor on, then switch to a channel on both Lyra Wireless units that is clear.

### **The Remote Control Doesn't Work**

---

- Something might be between the remote and the remote sensor on the component. Make sure there is a clear path. (This is only when using the remote to operate other components, such as a TV or VCR.)
- Maybe batteries in remote are weak, dead, or installed incorrectly. Put new batteries in the remote.
- You might need to drain the remote's microprocessor: remove batteries and press the number 1 button for at least 60 seconds. Release the 1 button, replace the batteries, and reprogram, if necessary.

### **Care and Cleaning**

CAUTION: Turn OFF your unit before cleaning.

You can clean the unit as required, using a soft lint-free cloth. Be sure to occasionally dust the ventilation slots in the cabinet to help assure adequate ventilation.

Never use strong cleaning agents, such as ammonia-based cleaners, or abrasive powder. These types of cleaners will damage the unit.

Avoid placing drinks or vases with water on top of the unit. This could increase the risk of fire or shock hazard or damage to the unit.



## Chapter 3: Additional Information

---

### FCC Declaration of Conformity and Industry Canada Information

This device complies with Part 15 of the FCC Rules. Operation is subject to the following two conditions: (1) this device may not cause harmful interference, and (2) this device must accept any interference received, including interference that may cause undesired operation.

Trade Name: RCA                Model: RD900W  
Equipment Classification: Computing Device Accessory

Responsible Party:                    Thomson multimedia, Inc.  
    10330 N. Meridian Street  
    Indianapolis, IN 46290  
    Telephone 317-415-4151

This equipment has been tested and found to comply with the limits for a Class B digital device, pursuant to Part 15 of the FCC Rules. These limits are designed to provide reasonable protection against harmful interference in a residential installation. This equipment generates, uses, and can radiate radio frequency energy and, if not installed and used in accordance with the instructions, may cause harmful interference to radio communications. However there is no guarantee that interference will not occur in a particular installation. If this equipment does cause harmful interference to radio or television reception, which can be determined by turning the equipment off and on, the user is encouraged to try and correct the interference by one or more of the following measures:

- Reorient or relocate the receiving antenna.
- Increase the separation between the equipment and receiver.
- Connect this equipment into an outlet on a circuit different from that to which the receiver is connected.
- Consult your service provider or an experienced radio/TV technician for help.

FCC regulations state that unauthorized changes or modifications to this equipment may void the user's authority to operate it.

This Class B digital apparatus meets all requirements of the Canadian Interference Causing Equipment Regulations.

# Chapter 3: Additional Information

---

## **Limited Warranty**

### **What your warranty covers:**

- Defects in materials or workmanship.

### **For how long after your purchase:**

- One year from date of purchase for labor and parts
- The warranty period for rental units begins with the first rental or 45 days from date of shipment to the rental firm, whichever comes first.

### **What we will do:**

- Pay any Authorized RCA Audio Service Center the labor charges to repair your unit.
- Pay any Authorized RCA Audio Service Center for the new or, at our option, refurbished replacement parts required to repair your unit.

### **How you get service:**

- Take your unit to any Authorized RCA Audio Service Center. To identify your nearest Authorized RCA Audio Service Center, ask your dealer, look in the Yellow Pages, or call 1-800-336-1900.
- Show the Authorized Service Center Representative your evidence of purchase date or first rental.
- Pick up your unit when repairs are completed.
- Proof of purchase in the form of a bill of sale or receipted invoice which is evidence that the product is within the warranty period must be presented to obtain warranty service. For rental firms, proof of first rental is also required.

### **What your warranty does not cover:**

- Customer instruction. (Your User's Guide describes how to install, adjust, and operate your unit. Any additional information should be obtained from your dealer.)
- Installation and related adjustments.
- Signal reception problems not caused by your unit.
- Damage from misuse or neglect.
- Cleaning of audio heads.
- Batteries.
- A unit that has been modified or incorporated into other products or is used for institutional or other commercial purposes.
- A unit purchased or serviced outside the U.S.A.
- Acts of nature, such as but not limited to lightning damage.

### **Product Registration:**

- Please complete and mail the Product Registration Card packed with your product. It will make it easier to contact you should it ever be necessary. The return of the card is not required for warranty coverage.

## Chapter 3: Additional Information

---

### Limitation of Warranty:

- THE WARRANTY STATED ABOVE IS THE ONLY WARRANTY APPLICABLE TO THIS PRODUCT. ALL OTHER WARRANTIES, EXPRESS OR IMPLIED (INCLUDING ALL IMPLIED WARRANTIES OF MERCHANTABILITY OR FITNESS FOR A PARTICULAR PURPOSE) ARE HEREBY DISCLAIMED. NO VERBAL OR WRITTEN INFORMATION GIVEN BY THOMSON MULTIMEDIA INC., ITS AGENTS OR EMPLOYEES SHALL CREATE A WARRANTY OR IN ANY WAY INCREASE THE SCOPE OF THIS WARRANTY.
- REPAIR OR REPLACEMENT AS PROVIDED UNDER THIS WARRANTY IS THE EXCLUSIVE REMEDY OF THE CONSUMER. THOMSON MULTIMEDIA INC. SHALL NOT BE LIABLE FOR INCIDENTAL OR CONSEQUENTIAL DAMAGES RESULTING FROM THE USE OF THIS PRODUCT OR ARISING OUT OF ANY BREACH OF ANY EXPRESS OR IMPLIED WARRANTY ON THIS PRODUCT. THIS DISCLAIMER OF WARRANTIES AND LIMITED WARRANTY ARE GOVERNED BY THE LAWS OF THE STATE OF INDIANA. EXCEPT TO THE EXTENT PROHIBITED BY APPLICABLE LAW, ANY IMPLIED WARRANTY OF MERCHANTABILITY OR FITNESS FOR A PARTICULAR PURPOSE ON THIS PRODUCT IS LIMITED TO THE APPLICABLE WARRANTY PERIOD SET FORTH ABOVE.

### How State Law relates to warranty:

- Some states do not allow the exclusion nor limitation of incidental or consequential damages, or limitations on how long an implied warranty lasts, so the above limitations or exclusions may not apply to you.
- This warranty gives you specific legal rights, and you also may have other rights that vary from state to state.

### If you purchased your unit outside the United States:

- This warranty does not apply. Contact your dealer for warranty information.

Service calls which do not involve defective materials or workmanship are not covered by this warranty. Costs of such service calls are the sole responsibility of the purchaser.

**Visit our website at [www.rca.com](http://www.rca.com)**

---

Please do not send any products to the Indianapolis address listed in this manual or on the carton. This will only add delays in service for your product.

**Thomson multimedia Inc.**  
10330 North Meridian Street  
Indianapolis, IN 46290

©2002 Thomson multimedia Inc.  
Trademark(s)® Registered  
Marca(s) Registrada(s)

**TOCOM 55516710**

  
**THOMSON**

**THOMSON** 