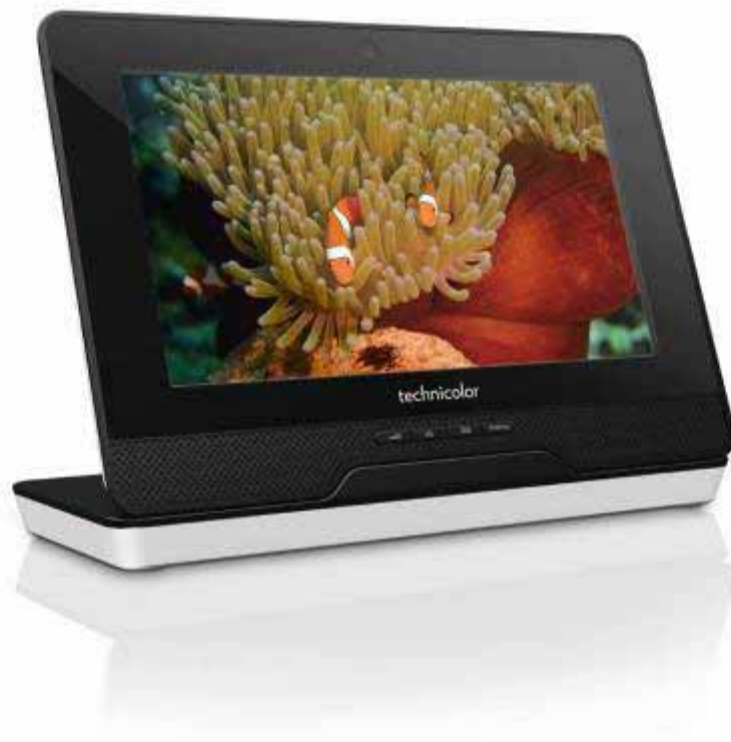


technicolor



MEDIA TOUCH 2.0
TVA201 User Guide

technicolor



Copyright

Copyright © 2010 Technicolor. All rights reserved.

Distribution and copying of this document, use and communication of its contents is not permitted without written authorization from Technicolor. The content of this document is furnished for informational use only, may be subject to change without notice, and should not be construed as a commitment by Technicolor. Technicolor assumes no responsibility or liability for any errors or inaccuracies that may appear in this document.

TECHNICOLOR
1 rue Jeanne d'Arc
92443 Issy-Les-Moulineaux Cedex
France

<http://www.technicolor.com>

Trademarks

The following trademarks may be used in this document:

- DECT™ is a trademark of ETSI.
- Bluetooth® word mark and logos are owned by the Bluetooth SIG, Inc.
- Ethernet™ is a trademark of Xerox Corporation.
- Wi-Fi®, WMM® and the Wi-Fi logo are registered trademarks of the Wi-Fi Alliance®. Wi-Fi CERTIFIED, Wi-Fi ZONE, Wi-Fi Protected Access, Wi-Fi Multimedia, Wi-Fi Protected Setup, WPA, WPA2 and their respective logos are trademarks of the Wi-Fi Alliance®.
- UPnP™ is a certification mark of the UPnP™ Implementers Corporation.
- DLNA® is a registered trademark, DLNA disc logo is a service mark, and DLNA Certified is a trademark of the Digital Living Network Alliance. Digital Living Network Alliance is a service mark of the Digital Living Network Alliance.
- Microsoft®, MS-DOS®, Windows®, Windows NT® and Windows Vista® are either registered trademarks or trademarks of Microsoft Corporation in the United States and/or other countries.
- Apple® and Mac OS® are registered trademarks of Apple Computer, Incorporated, registered in the United States and other countries.
- UNIX® is a registered trademark of UNIX System Laboratories, Incorporated.
- Adobe®, the Adobe logo, Acrobat and Acrobat Reader are trademarks or registered trademarks of Adobe Systems, Incorporated, registered in the United States and/or other countries.

Other brands and product names may be trademarks or registered trademarks of their respective holders. All other logos, trademarks and service marks are the property of their respective owners, where marked or not.

Document Information

Status: v1.1 (October 2010)

Reference: Media touch 2.0 PRT UG 1.1.doc

Short Title: MEDIA TOUCH 2.0 TVA201 User Guide

technicolor



1. About this User Guide	3
2. Your MEDIA TOUCH.....	4
3. Getting started.....	11
4. Trouble shooting.....	13
5. Technical specifications.....	14



1. About this User Guide

Used Symbols



A *note* provides additional information about a topic.



A *caution* warns you about problems or specific precautions that need to be taken.

Terminology

Generally, the Technicolor MEDIA TOUCH will be referred to as Tablet in this User Guide.

Typographical Conventions

Following typographical convention is used throughout this manual:

- This sample text indicates a hyperlink to a Web site.
Example: For more information, visit us at www.technicolor.com .
- This sample text indicates an internal cross-reference.
Example: If you want to know more about guide, see “1 Introduction” on page 7”.
- **This sample text** indicates an important content-related word.
Example: To enter the network, you **must** authenticate yourself.
- **This sample text** indicates a GUI element (commands on menus and buttons, dialog box elements, file names, paths and folders).
Example: On the **File** menu, click **Open** to open a file.

Documentation and software updates

Technicolor continuously develops new solutions, but is also committed to improving its existing products.

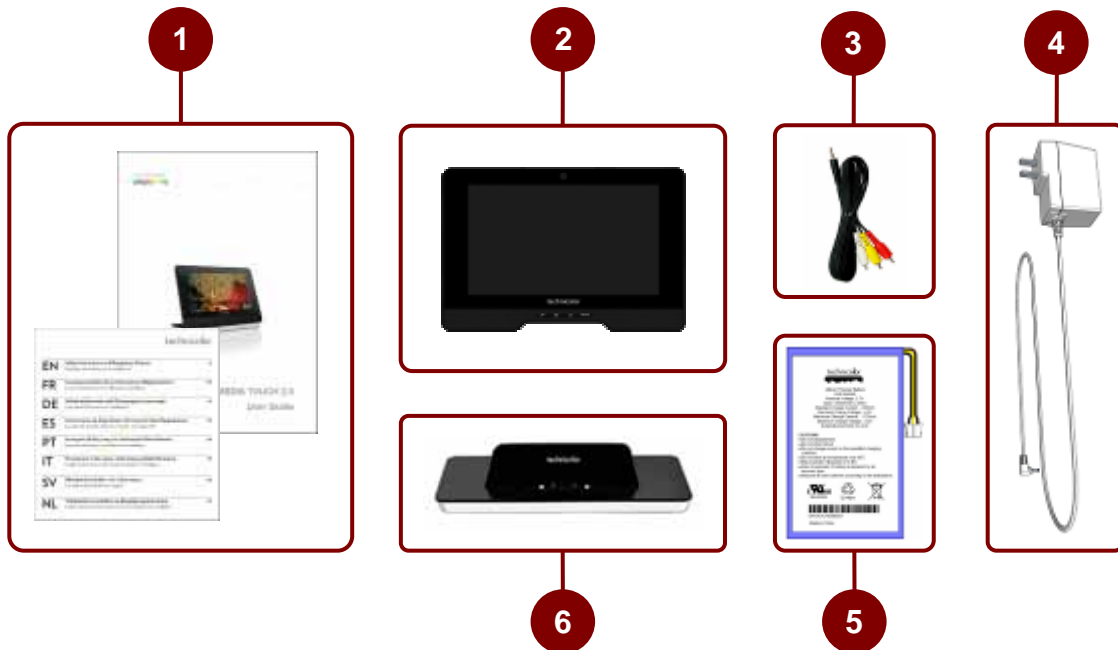
For more information on Technicolor's latest technological innovations, documents and software releases, visit us at www.technicolor.com .



2. Your MEDIA TOUCH

Your box

Your box contains the following items:



Item	Description
1	One User Guide One safety and regulatory notices booklet
2	One MEDIA TOUCH Tablet
3	One A/V cable
4	One AC-DC power adaptor
5	One lithium polymer rechargeable battery
6	One charging dock

When one of these items is missing contact your local reseller.

Before use, we recommend you to read carefully safety instructions and this user guide to get the most of your Tablet.

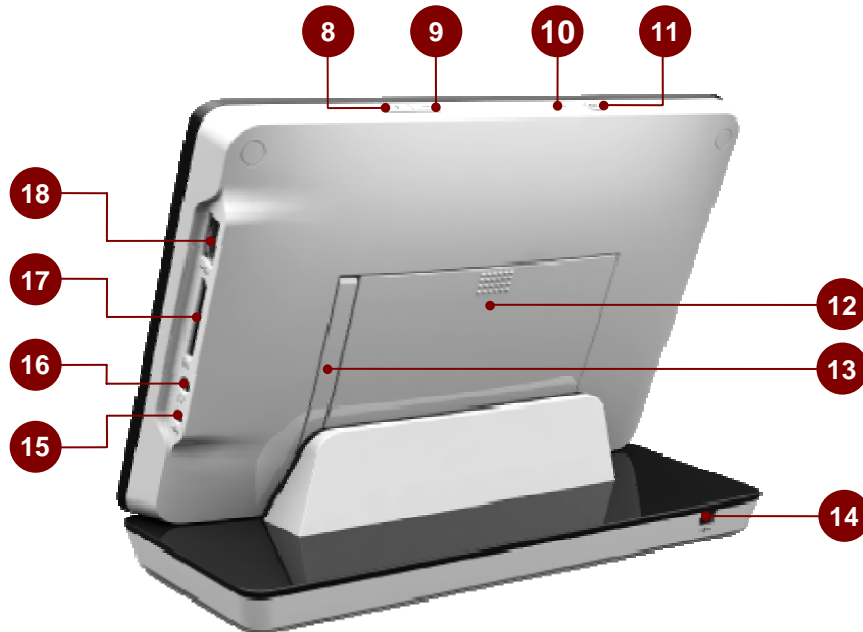
As a first-time user, please follow the following steps to start up your Tablet.



Your Tablet



Item	Description
1	Camera
2	Notification LED
3	Speaker
4	SEARCH key
5	HOME key
6	BACK key
7	MENU key



Item	Description
8	Volume UP key
9	Volume DOWN key
10	Microphone
11	Power ON/OFF key
12	Battery cover
13	Stand
14	Power connector on charging dock
15	Power connector on Tablet
16	Audio/Video connector
17	SD card connector
18	USB connector



Item	Description	Function
19	Charging contact	To charge the battery of the tablet when connected with the power adaptor plugged in the charging dock.



Setting up your Tablet

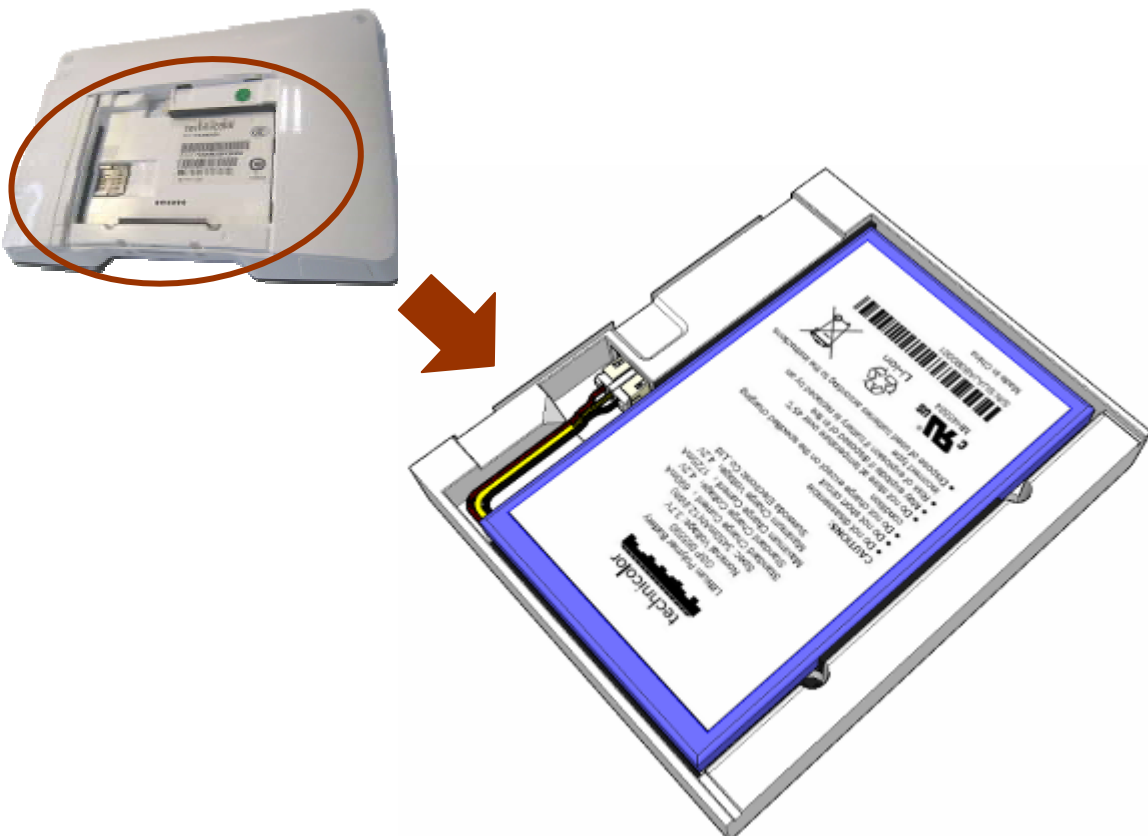
Connecting the battery

For safety reasons, the rechargeable battery of the Tablet is disconnected during the shipment. Please follow the steps below to connect the battery. Make sure the Tablet is powered off before removing the sliding cover.

1. Remove the battery cover from the Tablet.

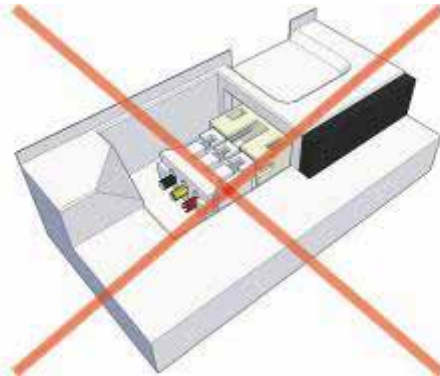
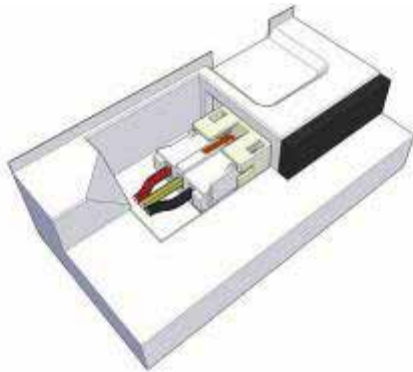


2. Connect the battery connector and insert the battery in its compartment.





Make sure the polarity of the battery match the polarity of the Tablet connector.



For safety reason do not replace the battery by an incorrect type. If your battery is damaged, please contact your local reseller.

3. Slide the battery cover back on up to a locking "click".





Charging the battery

1. Plug the jack connector of power adaptor into the power connector of the charging dock and put the Tablet on it. Plug the power adaptor on a power outlet.



Or

2. Plug the jack connector of the power plug directly into the power connector of the Tablet.



To be able to make use of the battery capacity we recommend you to charge it for at least 8 hours before using the Tablet for the first time.

On fully charged battery the LED indicator will be changed from RED to GREEN.



3. Getting started

Language selection

1. Press on power button **11** shortly to boot up the Tablet.
 2. Select the HOME page you want to access by touch on it.
 3. Go to the APPLICATION page by:
 - Push the MENU key **7**
 - Select “Settings”
- Or
- Open the APPLICATION page by touching the screen.
 - Touch the “Settings” icon.
4. Drag on the screen to “Language & Keyboard”.
 5. Select “Language & Keyboard”.
 6. Select “Select locale”.
 7. Select your language.
 8. To return to your HOME page:
 - Press the BACK key **6** twice to return to the HOME page
- Or
- Press the HOME key **5** to return to the home page selection and touch the HOME page you want to access.



Wi-Fi network connection

1. Enter the “Settings” page.
2. Select “Wireless & networks”.
3. Turn on WIFI by selecting “Wi-Fi”.
4. Select “Wi-Fi settings”.
5. The Tablet is searching and displays all detected access points SSID.
6. Select the Wi-Fi network you want to connect.
7. For non-secured network:
 - Select “Connect” to get connection.
8. For secured network:
 - Enter the wireless password when you are invited.



The wireless password entry is case-sensitive.

- Select “Connect” to get connection.



4. Trouble shooting

Problem	What to do
My tablet won't turn on.	<ol style="list-style-type: none"> 1. The battery may not be properly connected inside the tablet. Remove the cover from the back of the tablet to verify that the battery is inserted the right way. 2. The battery may not be fully charged. It is recommended to charge the tablet for at least 8 hours when using it for the first time or when it is fully discharged. 3. Make sure that the charging cradle's AC power cord is fully plugged into the outlet. 4. Make sure that the DC plug of the power adaptor is properly plugged into the charging dock or the tablet.
Wifi Field Strength indicator is weak.	Bring the tablet device closer to the Wifi Access Point/Modem.
No audio	Check if the speakers are muted.
Frozen screen and no response to any button input or screen input.	<ol style="list-style-type: none"> 1. Make sure the Wifi access point/modem is powered on if used. 2. Power OFF and reboot the tablet device.
No ringing for incoming call.	Check if the speaker are muted.
Battery capacity is always low even if recharged.	Battery may be out of warranty or have to be replaced. Contact your local reseller.



5. Technical specifications

Wireless standard	WiFi	Standard / Throughput rate	IEEE 802.11n / 130Mbps IEEE 802.11g / 54Mbps IEEE 802.11b / 11Mbps
		Frequency band	2.4 to 2.5 GHz
		Channel bandwidth	20 MHz
		Range	Up to 100m outside / 20m inside ⁽¹⁾
	Digital Enhanced Cordless Telecommunications (DECT)	Frequency band	1920 to 1930 MHz
		Chanel bandwidth	1.728 MHz
		Protocol	Long slots
		Voice coding	G711 / G722 / G726
	Range	Up to 300m outside / 50m inside ⁽¹⁾	
Power supply	Battery	Rechargeable Polymer Li-ion 3.7V / 3450mAh	
	Power adaptor	In : 100-240VAC - 50/60Hz 600mA Out : 15VDC 1.2A	
Connectivity	USB 2.0 host x 1 Audio/video jack 3.5mm x1 SD card reader x 1		
Screen	7 inch touch screen 800x480 pixels (WVGA)		
Camera	CMOS / 0.3 Mpixels		
Microphone	Omni-directional / 100 to 9000 Hz		
Speakers	Stereo / 100 to 20000 Hz		
Video	Decoding	H264 (up to H264 MP HD 720p decoding) DivX, Xvid, VC1 (wmv), H263	
	Encoding	H264, H263	
Audio	MP3, WMA, AAC		
Photo	JPEG, PNG, BMP		
Operation temperature range	0 to 40°C		
Storage temperature range	-20 to 45°C		
Height	135 mm		
Lenght	198 mm		
Thickness	25.5 mm		
Weight	520 g		

⁽¹⁾ Depends on environmental conditions.

FCC RF Exposure requirements: The SAR limit of USA (FCC) is 1.6 W/kg averaged over one gram of tissue. This model (FCC ID: G95-TVA201) has also been tested against this SAR limit. The highest SAR value reported under this standard during product certification for use when properly worn on the body is 0.668 W/kg. This device was tested for typical body-worn operations with the device kept touching from the body. The use of accessories that do not satisfy these requirements may not comply with FCC RF exposure requirements, and should be avoided.

This device complies with part 15 of the FCC rules. Operation is subject to the following two conditions: (1) this device may not cause harmful interference, and (2) this device must accept any interference received, including interference that may cause undesired operation.

NOTE: The manufacturer is not responsible for any radio or TV interference caused by unauthorized modifications to this equipment. Such modifications could void the user's authority to operate the equipment.

NOTE: This equipment has been tested and found to comply with the limits for a Class B digital device, pursuant to part 15 of the FCC Rules. These limits are designed to provide reasonable protection against harmful interference in a residential installation. This equipment generates uses and can radiate radio frequency energy and, if not installed and used in accordance with the instructions, may cause harmful interference to radio communications. However, there is no guarantee that interference will not occur in a particular installation. If this equipment does cause harmful interference to radio or television reception, which can be determined by turning the equipment off and on, the user is encouraged to try to correct the interference by one or more of the following measures:

- Reorient or relocate the receiving antenna.
- Increase the separation between the equipment and receiver.
- Connect the equipment into an outlet on a circuit different from that to which the receiver is connected.
- Consult the dealer or an experienced radio/TV technician for h

technicolor



Media touch 2.0 PRT UG 1.1.doc. © Technicolor 2010. All rights reserved.
Reproduction prohibited. The manufacturer reserves the right to modify the
characteristics of its products to make technical improvements or to comply with
new regulations. Printed in China.



UPTVA201PRT310011