

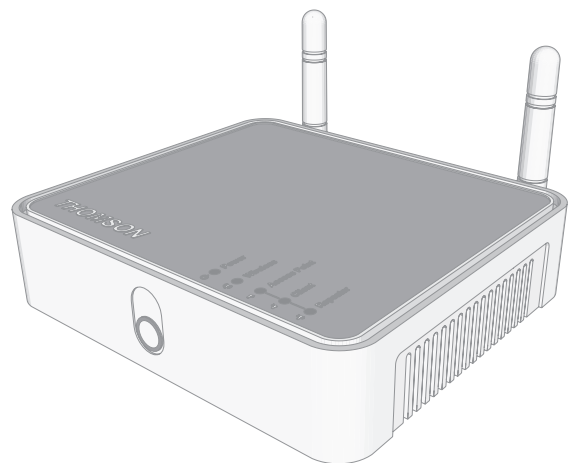


THOMSON



THOMSON TG185n

Ethernet-to-WiFi Convertor/Wireless-n Repeater



Setup and User Guide

THOMSON TG185n

Setup and User Guide

Copyright

Copyright ©1999-2008 THOMSON. All rights reserved.

Distribution and copying of this document, use and communication of its contents is not permitted without written authorization from THOMSON. The content of this document is furnished for informational use only, may be subject to change without notice, and should not be construed as a commitment by THOMSON. THOMSON assumes no responsibility or liability for any errors or inaccuracies that may appear in this document.

Thomson Telecom Belgium
Prins Boudewijnlaan, 47
B-2650 Edegem
Belgium

<http://www.thomson-broadband.com>

Trademarks

The following trademarks may be used in this document:

- DECT is a trademark of ETSI.
- Bluetooth® word mark and logos are owned by the Bluetooth SIG, Inc.
- Ethernet™ is a trademark of Xerox Corporation.
- Wi-Fi®, WMM® and the Wi-Fi logo are registered trademarks of the Wi-Fi Alliance®. "Wi-Fi CERTIFIED", "Wi-Fi ZONE", "Wi-Fi Protected Access", "Wi-Fi Multimedia", "Wi-Fi Protected Setup", WPA, WPA2" and their respective logos are trademarks of the Wi-Fi Alliance®.
- UPnP™ is a certification mark of the UPnP™ Implementers Corporation.
- Microsoft®, MS-DOS®, Windows®, Windows NT® and Windows Vista® are either registered trademarks or trademarks of Microsoft Corporation in the United States and/or other countries.
- Apple® and Mac OS® are registered trademarks of Apple Computer, Incorporated, registered in the United States and other countries.
- UNIX® is a registered trademark of UNIX System Laboratories, Incorporated.
- Adobe®, the Adobe logo, Acrobat and Acrobat Reader are trademarks or registered trademarks of Adobe Systems, Incorporated, registered in the United States and/or other countries.

Other brands and product names may be trademarks or registered trademarks of their respective holders.

Document Information

Status: v0.2 (July 2008)

Reference: E-DOC-CTC-20080624-0009

Short Title: Setup and User Guide TG185n R8.2 (en)

About this Setup and User Guide	1
1 Introduction.....	3
2 Installation.....	5
3 The THOMSON TG185n as Wireless Access Point	7
3.1 Configuring The THOMSON TG185n As Access Point.....	8
3.2 Connecting a Wireless Client via WPS	11
3.2.1 Push Button Configuration	12
3.2.2 PIN Code Entry On The Wireless Client.....	13
3.2.3 PIN Code Entry On the THOMSON TG185n	14
3.3 Manually Configuring a Wireless Client	15
3.4 Securing Your Wireless Network	16
3.4.1 Configuring WPA(2)-PSK Encryption	17
3.4.2 Configuring WPA Encryption	18
3.4.3 Configuring WEP Encryption.....	19
4 The THOMSON TG185n as Wireless Repeater	21
4.1 Automatic Configuration (Via WPS).....	22
4.1.1 Push Button Configuration	23
4.1.2 PIN Code Entry On The Access Point.....	24
4.1.3 PIN Code Entry On the THOMSON TG185n	25
4.2 Manual Configuration (Without WPS)	26
5 Your THOMSON TG185n as Wireless Client.....	29
5.1 Automatic Configuration (Via WPS).....	30
5.1.1 Push Button Configuration	31
5.1.2 PIN Code From Your Access Point.....	32
5.2 Manual Configuration (Without WPS)	33
6 THOMSON TG185n Basics.....	35
6.1 THOMSON TG185n LED Behaviour	36
6.1.1 Status LEDs	37
6.1.2 WPS Button LED	38
6.1.3 Ethernet LEDs	39

Contents

6.2	THOMSON TG185n Web Interface	40
6.3	Saving/Restoring Your Configuration	41
7	Support.....	43
7.1	Assigning a Static IP to Your Computer	44
7.1.1	Assigning a Static IP Address On Windows Vista	45
7.1.2	Assigning a Static IP Address On Windows XP	46
7.1.3	Assigning a Static IP Address On Mac OS X.....	47
7.2	Restoring the IP Settings of Your Computer	48
7.3	General THOMSON TG185n Troubleshooting	49
7.3.1	Wired Connection Troubleshooting.....	50
7.3.2	Wireless Connection Troubleshooting	51
7.4	Reset to Factory Defaults	52

About this Setup and User Guide

Used Symbols



A **note** provides additional information about a topic.



A **caution** warns you about potential problems or specific precautions that need to be taken.

Typographical Conventions

Following typographical convention is used throughout this manual:

- **Sample text** indicates a hyperlink to a Web site.
Example: For more information, visit us at www.thomson-broadband.com.
- **Sample text** indicates an internal cross-reference.
Example: If you want to know more about guide, see “1 Introduction” on page 7”.
- **Sample text** indicates an important content-related word.
Example: To enter the network, you **must** authenticate yourself.
- **Sample text** indicates a GUI element (commands on menus and buttons, dialog box elements, file names, paths and folders).
Example: On the **File** menu, click **Open** to open a file.

Documentation and software updates

THOMSON continuously develops new solutions, but is also committed to improving its existing products.

For more information on THOMSON's latest technological innovations, documents and software releases, visit us at <http://www.thomson-broadband.com>.

About this Setup and User Guide

1 Introduction

Introduction

This Setup and User Guide will show you how to set up your THOMSON TG185n.

Supported wireless standards

The THOMSON TG185n supports the following wireless standards:

Standard	Maximum Data Rate
IEEE 802.11n	300 Mbps
IEEE 802.11g	54 Mbps
IEEE 802.11b	11 Mbps
IEEE 802.11a	54 Mbps

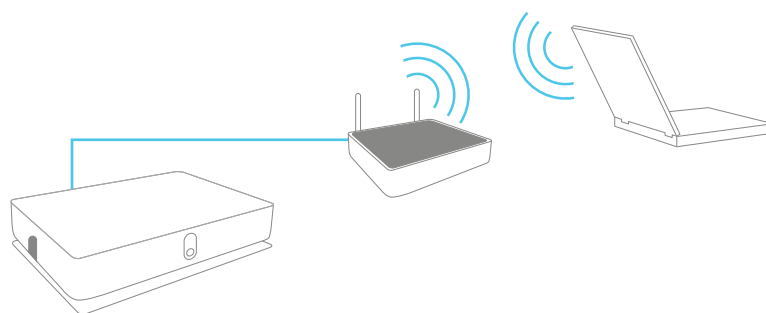
THOMSON TG185n Modes

You can use the THOMSON TG185n as:

- Wireless Access Point
- Wireless Repeater
- Wireless Client

Wireless Access Point

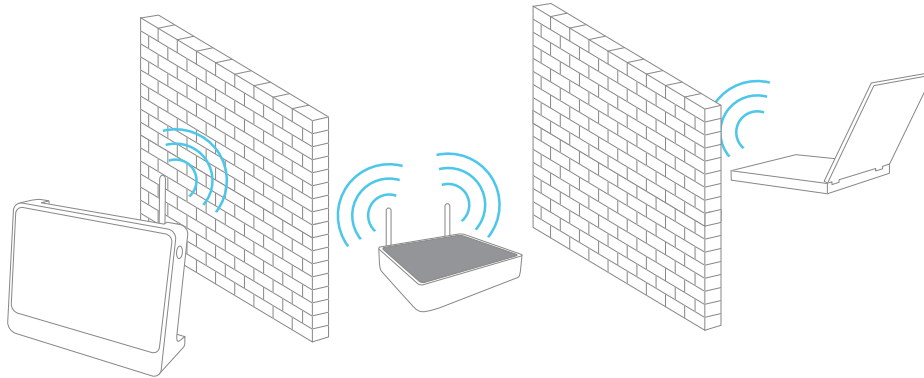
Use this mode if you are using a wired network and you now want to be able to access your network wirelessly.



1 Introduction

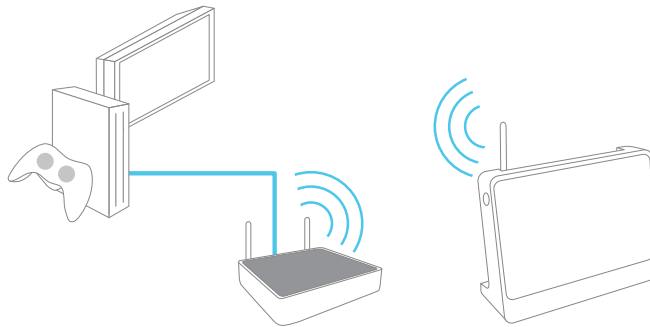
| Wireless Repeater

Use this mode to extend the coverage of an existing wireless network:



Wireless Client

Use this mode to connect a wired Ethernet device (for example: a laptop, a gaming console with Ethernet connectivity,...):



2 Installation

Introduction

In this chapter we will help you to:

- 1 Connect the cables.
- 2 Configure the THOMSON TG185n.

Connect the cables

Proceed as follows:

- 1 Plug the connector of the electric power supply adapter into the power inlet port on the back panel of your THOMSON TG185n.
- 2 Plug the adapter into a nearby mains socket.
- 3 Plug one end of the Ethernet cable into the **Ethernet** port of your THOMSON TG185n.
- 4 Plug the other end of the Ethernet cable in the Ethernet port on your computer.



Ethernet ports are often marked with the following label: 

Configure the THOMSON TG185n

If you want to configure your THOMSON TG185n as:

- Wireless Access Point, proceed with “3.1 Configuring The THOMSON TG185n As Access Point” on page 8.
- Wireless Repeater, proceed with “4 The THOMSON TG185n as Wireless Repeater” on page 21.
- Wireless Client, proceed with “5 Your THOMSON TG185n as Wireless Client” on page 29.

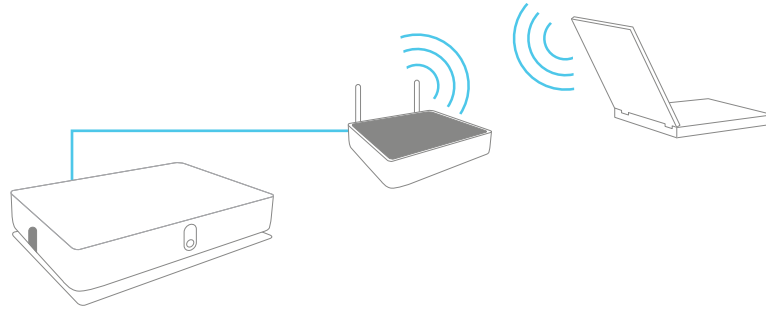
2 Installation

3 The THOMSON TG185n as Wireless Access Point

3 The THOMSON TG185n as Wireless Access Point

Usage

Use this mode if you are using a wired network and you now want to be able to access your network wirelessly.



In this chapter

Topic	Page
Configuring The THOMSON TG185n As Access Point	8
Connecting a Wireless Client via WPS	11
Manually Configuring a Wireless Client	15
Securing Your Wireless Network	16

3 The THOMSON TG185n as Wireless Access Point

3.1 Configuring The THOMSON TG185n As Access Point

Procedure

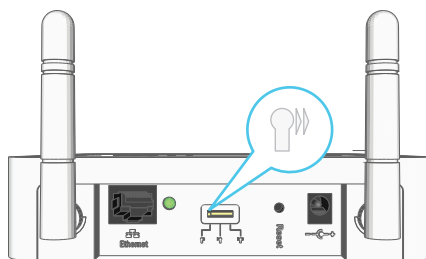
Before you can use your THOMSON TG185n as wireless access point you have to complete following steps:

- 1 Switch the THOMSON TG185n to access point mode.
- 2 Assign a static IP address to your computer.
- 3 Configure the wireless settings of your THOMSON TG185n.
- 4 Configure the IP settings of your THOMSON TG185n (optional).
- 5 Connect your THOMSON TG185n to your Internet gateway.
- 6 Configure your wireless clients.
- 7 Configure your computer to obtain an IP address automatically.

Switch the THOMSON TG185n to access point mode

Proceed as follows:

- 1 On the back panel of your THOMSON TG185n, move the switch to the access point position.



- 2 After a few seconds the **Access Point** LED will turn green.

Assign a static IP address to your computer

The IP address must be between 192.168.1.14 and 192.168.1.63 (for example 192.168.1.20). The subnet mask must be **255.255.255.0**.

For more information, see "7.1 Assigning a Static IP to Your Computer" on page 44.

Configure the wireless settings of your THOMSON TG185n

Proceed as follows:

- 1 Open your web browser and browse to <http://192.168.1.11>.
- 2 The THOMSON TG185n Web Interface appears. On the **Basic Setting** menu, click **Wireless Setting**.
- 3 The **Wireless Settings** page appears.
- 4 In the **Network ID (SSID)** box, you can change the name of your wireless network. This name will be displayed in the list of available networks when you try to connect a device to your THOMSON TG185n access point.

3 The THOMSON TG185n as Wireless Access Point

- 5 In the **Select Security Policy** list, select the security policy of your choice and enter a passphrase/ encryption key. For more information, see "3.4 Securing Your Wireless Network" on page 16.



If the **Enable WPS (Wi-Fi Protected Setup)** check box is enabled you can only select the following policies:

- **None**
- **WPA-PSK**
- **WPA2-PSK**
- **WPA-PSK-AUTO**

If you want to select another policy (not recommended), clear the **Enable WPS (Wi-Fi Protected Setup)** check box.

For more information on WPS, see "3.2 Connecting a Wireless Client via WPS".

- 6 Select the **WPS Configured** check box, this way you are sure that your settings will not be changes during WPS.
- 7 Click **Apply**.
- 8 The THOMSON TG185n prompts you that the configuration was successful.

Configure the IP settings of your THOMSON TG185n (optional)

If you still want to be able to access your THOMSON TG185n after connecting it to your Internet gateway, you have to make sure that they are both using the same IP range.



If your Internet gateway is also a THOMSON product, this will automatically be the case and no extra configuration is needed. Continue with the next topic.

If you choose not to do this configuration or you don't know the IP settings of your Internet gateway, you will only be able to access the THOMSON TG185n by assigning a static IP address to your computer that is the same range as your THOMSON TG185n.

To change the IP settings of your THOMSON TG185n:

- 1 On the **Basic Setting** menu, click **Device IP Setting**.
- 2 The **Device IP Setting** page appears. On this page you can configure the IP address of your THOMSON TG185n. Select:
 - ▶ **Assign static IP address to this device** if you want to choose the IP address for your THOMSON TG185n yourself.
 - ▶ **Use the DHCP client protocol to automatically get the IP address for this device** if you want your Internet gateway to assign an IP address to your THOMSON TG185n. In this case you do not have to provide an **IP address**, **IP Subnet Mask** and **Gateway IP Address**.
- 3 In the **IP address** box, type an IP address that is in the same range as your Internet gateway.
- 4 In the **IP Subnet Mask**, type the same subnet mask as your Internet gateway.
- 5 In the **Gateway IP Address**, type the type the IP address of your Internet gateway.
- 6 Write down this IP address and subnet mask. From now on, you can only access the THOMSON TG185n at this address

Connect your THOMSON TG185n to your Internet gateway

Proceed as follows:

- 1 Disconnect the Ethernet cable from your computer.
- 2 Plug the Ethernet in an Ethernet port on your Internet gateway.
- 3 Your THOMSON TG185n is now connected your Internet gateway via the Ethernet cable.

3 The THOMSON TG185n as Wireless Access Point

Configure your wireless clients

In order to connect your wireless clients to the THOMSON TG185n you must configure them with the same Network ID (SSID) and security as your wireless access point. You can do this:

- Automatically via WPS.
For more information, see “3.2 Connecting a Wireless Client via WPS” on page 11
- Manually entering these settings on the configuration utility of your wireless clients.either using Wi-Fi Protected Setup (WPS) or manually. For more information, see “3.3 Manually Configuring a Wireless Client” on page 15.

Configure your computer to obtain an IP address automatically

For more information, see “7.2 Restoring the IP Settings of Your Computer” on page 48.

3.2 Connecting a Wireless Client via WPS

WPS

Wi-Fi Protected Setup (WPS) allows you to add new wireless clients to your network in a swift and easy way, without the need to enter all of your wireless settings (SSID, encryption,...).

Requirements

- Your wireless clients must supports WPS. Check the documentation of your wireless client for this.
- WPS must be enabled on your THOMSON TG185n.
- You can only use WPS with the following security levels:
 - ▶ WPA-PSK
 - ▶ WPA2-PSK
 - ▶ No encryption

Enabling WPS on your THOMSON TG185n

If WPS is not yet enabled on your THOMSON TG185n:

- 1 Open your web browser and browse to <http://192.168.1.11>.
- 2 On the **Basic Setting** menu, click **Wireless Setting**.
- 3 The **Wireless Setting** page appears.
- 4 Select the **Enable WPS** check box.
- 5 Click **Apply**.

Supported WPS options

The THOMSON TG185n supports the following options:

- Push Button Configuration (PBC):
This is the easiest way to connect your wireless client. You have to push a button both on the THOMSON TG185n and the wireless client. For more information, see "3.2.1 Push Button Configuration" on page 12.
- PIN code entry on the wireless client:
The THOMSON TG185n generates a PIN code that you have to enter in the configuration utility of your wireless client. For more information, see "3.2.2 PIN Code Entry On The Wireless Client" on page 13.
- PIN code entry on the THOMSON TG185n:
The wireless client generates a PIN code that you have to enter on the web interface of your THOMSON TG185n. For more information, see "3.2.3 PIN Code Entry On the THOMSON TG185n" on page 14.



Your wireless client may not support all of these options. For more information, consult the documentation of your wireless client.

Troubleshooting

If you are having trouble connecting your wireless client via WPS, try to configure it manually. For more information, see "3.3 Manually Configuring a Wireless Client" on page 15.

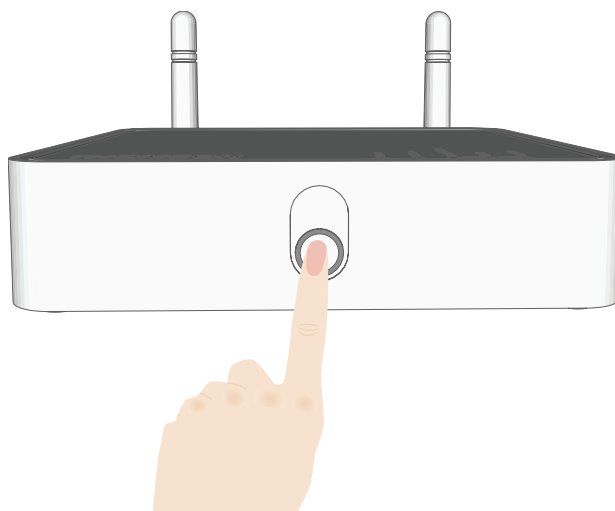
3 The THOMSON TG185n as Wireless Access Point

3.2.1 Push Button Configuration

Procedure

Proceed as follows:

- 1 Shortly press the WPS button on the THOMSON TG185n:



- 2 The WPS button LED starts blinking green. This indicates that the THOMSON TG185n is now searching for wireless clients that are in registration mode. You now have two minutes to start WPS on your wireless client.



If the LED does not start to blink, WPS is not enabled on your THOMSON TG185n. For more information on how to enable WPS, see “Enabling WPS on your THOMSON TG185n” on page 11.

- 3 Start WPS on your wireless client and choose Push Button Configuration (PBC) as method. For more information, consult the documentation of your wireless client.

3.2.2 PIN Code Entry On The Wireless Client

Get the THOMSON TG185n's PIN code

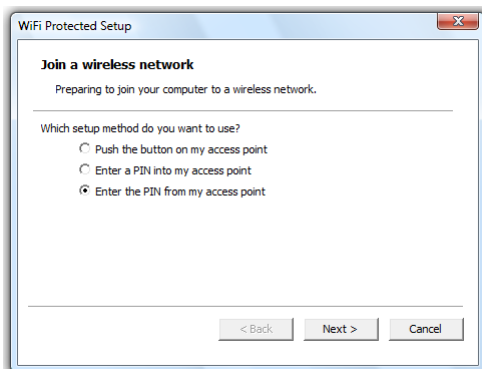
You can find the WIRELESS PIN:

- On the label on the bottom of your THOMSON TG185n.
- On the THOMSON TG185n Web Interface:
 - 1 Open your web browser and browse to <http://192.168.1.11>.
 - 2 On the **Basic Setting** menu, click **Wireless Setting**.
 - 3 You can find the PIN code in the **WPS Pin** box.

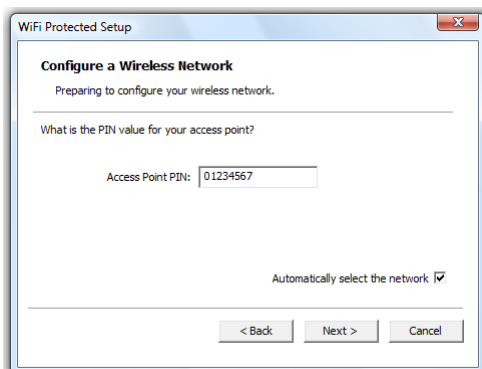
Enter the THOMSON TG185n's PIN code in the client utility

Proceed as follows:

- 1 Open the configuration utility of your wireless client.
- 2 Start WPS on your wireless client and choose to enter a PIN from your access point. For example, on the TG121n Wireless Client Utility you will see the following screen:



- 3 Enter the PIN code of your THOMSON TG185n and follow the instructions. For example, on the TG121n Wireless Client Utility you will see the following screen:



- 4 At the end of the installation your utility will inform you that WPS was successful.

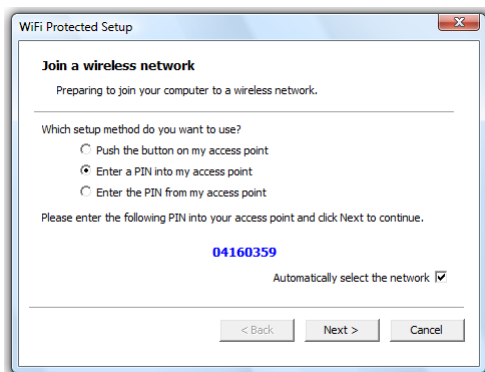
3 The THOMSON TG185n as Wireless Access Point

3.2.3 PIN Code Entry On the THOMSON TG185n

Get your wireless client's PIN code

Proceed as follows:

- 1 Open the configuration utility of your wireless client.
- 2 Start WPS and choose to generate a PIN code or enter a PIN code into your access point. For example on the TG121n Wireless Client Utility you will see the following screen:



- 3 Write down the PIN code generated by the configuration utility.

Enter your wireless client's PIN code in the THOMSON TG185n web interface

Proceed as follows:

- 1 On the **Advanced Setting** menu, click **WPS Setting**.
- 2 Under **Select the WPS Method**, select PIN and enter the PIN code in the **Pin Number** box.
- 3 Click **Submit**.
- 4 Continue with the configuration on the configuration utility of your wireless client.
- 5 At the end of the installation your utility will inform you that WPS was successful.

3.3 Manually Configuring a Wireless Client

Before you start

Before you can connect a computer to your wireless network you need to know which Network ID (SSID) and encryption your THOMSON TG185n is using.

Default values

If you did not yet change the wireless settings, you must use the default settings that are printed on the label on the bottom of your THOMSON TG185n.

Forgot your wireless settings?

If you have changed the wireless settings manually and you can't remember your settings, try one of the following:

If one of your computers is already connected to your network:

- 1 Open your web browser and browse to <http://192.168.1.13>.
- 2 The THOMSON TG185n Web Interface appears. On the **Basic Setting** menu, click **Wireless Setting**.
- 3 The wireless **Access Point page** appears. Under:
 - ▶ **Configuration**, you can find the network name (SSID).
 - ▶ **Security**, you can find the encryption.

If none of your computers is connected to your network, connect a computer using a wired connection and follow the procedure above to find out what your wireless settings are.

Another option is to reset your THOMSON TG185n and reconfigure it all over again. For more information, see "7.4 Reset to Factory Defaults" on page 52.

Procedure

Configure your computer with the same wireless settings as your THOMSON TG185n. For more information, consult the help of your wireless client.

3 The THOMSON TG185n as Wireless Access Point

3.4 Securing Your Wireless Network

Introduction

By using encryption, communication between the wireless clients and your THOMSON TG185n is protected by a passphrase. Only clients which use the correct network name (SSID) and passphrase can connect to your network.

Encryption methods

During the years a number of encryption types have been developed. The list below gives you an overview of the supported encryption types ordered by security level, you will find the highest level of security at the top of the list:

For Enterprise environment:

- **WPA(2) Encryption:**
To use this encryption, a RADIUS authentication server must be available in your network. In this scenario wireless clients first have to authenticate to the RADIUS server. The RADIUS server will tell the wireless client which key it should use to encrypt its data. The RADIUS server will change this key after a specified time.
- If you do not have a RADIUS server in your network, use one of the encryption types for home and small office environment.

For home or small office environment:

- **WPA(2)-PSK Encryption:**
The wireless data is being encrypted with a user-defined key. Wireless clients must be configured with this key before they can connect to the THOMSON TG185n.
- **WEP Encryption:**
The first encryption type used for wireless connections. Like WPA-PSK it uses a user-defined key, but WEP has been proven to have some security issues. We strongly recommend you to use WPA-PSK instead.

Which encryption method should I use?

We strongly recommend you to *use the highest level* of encryption that is supported by all your wireless clients.

Configuring the wireless encryption

Proceed as follows:

- 1 Open your web browser and browse to <http://192.168.1.11>.
- 2 The THOMSON TG185n Web Interface appears. On the **Basic Setting** menu, click **Wireless Setting**.
- 3 The **Wireless Setting** page appears.
- 4 In the Security Policy list, you can select the policy of your choice. If you want to use:
 - ▶ WPA(2)-PSK Encryption, continue with "3.4.1 Configuring WPA(2)-PSK Encryption" on page 17.
 - ▶ WEP Encryption, continue with "3.4.3 Configuring WEP Encryption" on page 19.
 - ▶ WPA(2) Encryption, continue with "3.4.2 Configuring WPA Encryption" on page 18.

3.4.1 Configuring WPA(2)-PSK Encryption

Procedure

Continuing from “ Configuring the wireless encryption”:

1 In the **Select Security list**, select:

▶ **WPA2-PSK:**

WPA2-PSK is the most secure version, but not all wireless clients already support it. Before you select this version, make sure that all of your wireless clients support it.

▶ **WPA-PSK-AUTO:**

If not all of your wireless clients support WPA2-PSK or you are not sure if they support WPA2-PSK, we recommend you to choose **WPA-PSK-AUTO**. Wireless clients that support WPA2-PSK will use WPA2-PSK, the others will use WPA-PSK.

▶ **WPA-PSK:**

If none of your wireless clients support WPA2-PSK choose this option.



To use WPA2-PSK on Windows XP Service Pack 2 (SP2) you first have to install Wi-Fi Protected Access 2 (WPA2)/Wireless Provisioning Services Information Element (WPS IE) update or install SP3 on your Windows XP.

You can find the WPS IE update on <http://support.microsoft.com/kb/917021>.

2 In the **Pre-Shared Key** box, type a pass phrase (also known as Pre-shared key) of your choice. The key must consist of 8 to 63 alphanumeric characters or 64 hexadecimal characters (characters from 0 to 9 and from A to F).

3 Click **Apply**.

4 The THOMSON TG185n prompts you that the configuration was successful.

5 Configure your wireless client(s) with the same settings.

3 The THOMSON TG185n as Wireless Access Point

3.4.2 Configuring WPA Encryption

Configure the RADIUS server


Continuing from “ Configuring the wireless encryption”:

Proceed as follows:

- 1 On the **Advanced Setting** menu, click **RADIUS setting**.
- 2 Under **Primary Server**, select **Enable Primary Server**.
- 3 In the **Server IP address** box, type the IP address of your RADIUS server.
- 4 In the **Port Number** box, type the RADIUS Port.
- 5 In the **Shared Secret** box, type the RADIUS Key.

Enable WPA

Proceed as follows:

- 1 On the **Basic Setting** menu, click **Wireless Setting**.
 - 2 Clear the **Enable WPS (Wi-Fi Protected Setup)** check box.
 - 3 In the **Select Security Policy** list, click the desired WPA version.
 - ▶ **WPA2:**
WPA2 is the most secure version, but not all wireless clients already support it. Before you select this version, make sure that all of your wireless clients support it.
 - ▶ **WPA-AUTO:**
If not all of your wireless clients support WPA2 or if you are not sure if they support WPA2, we recommend you to choose **WPA-AUTO**. Wireless clients that support WPA2 will use WPA2, the others will use WPA.
 - ▶ **WPA:**
If none of your wireless clients support WPA2 choose this option.
-  To use WPA2-PSK on Windows XP Service Pack 2 (SP2) you first have to install Wi-Fi Protected Access 2 (WPA2)/Wireless Provisioning Services Information Element (WPS IE) update or install SP3 on your Windows XP.
You can find the WPS IE update on <http://support.microsoft.com/kb/917021>.
- 4 Click **Apply** to immediately apply your changes.
 - 5 The THOMSON TG185n prompts you that the configuration was successful.
 - 6 Configure your wireless client(s) with the same settings.

3.4.3 Configuring WEP Encryption

Warning

WEP has been proven to have some security issues. We strongly recommend you to use WPA-PSK instead.

Procedure

Continuing from “Configuring the wireless encryption”:

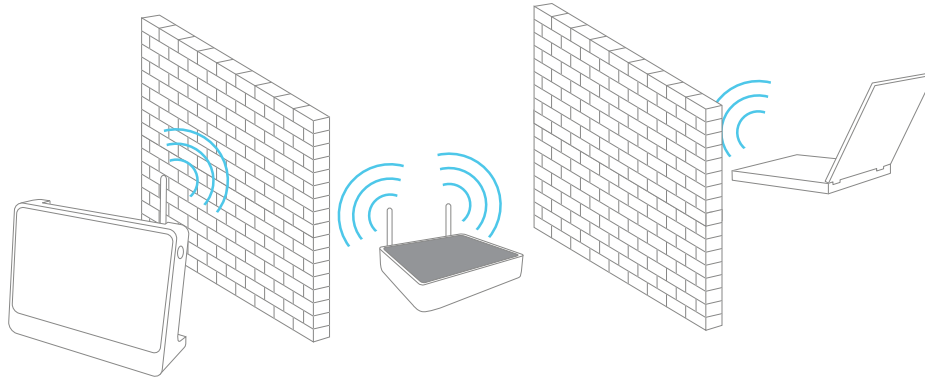
- 1 Clear the **Enable WPS (Wi-Fi Protected Setup)** check box.
- 2 In the **Select Security Policy** list, select **WEP**.
- 3 In the **WEP Key Length** list, click the desired key length (a higher key length offers higher security).
- 4 Select:
 - ▶ **WEP64-ASCII** if you want to use a key consisting of 5 alphanumeric characters.
 - ▶ **WEP64-Hex** if you want to use a key consisting of 10 hexadecimal characters (characters from 0 to 9 and from A to F).
 - ▶ **WEP128-ASCII** if you want to use a key consisting of 13 alphanumeric characters.
 - ▶ **WEP128-Hex** if you want to use a key consisting of 26 hexadecimal characters (characters from 0 to 9 and from A to F).
 - ▶ **WEP152-ASCII** if you want to use a key consisting of 16 alphanumeric characters.
 - ▶ **WEP152-Hex** if you want to use a key consisting of 32 hexadecimal characters (characters from 0 to 9 and from A to F).
- 5 In the text box next to this selection, type the network key of your choice.
- 6 Click **Apply**.
- 7 The THOMSON TG185n prompts you that the configuration was successful.
- 8 Configure your wireless client(s) with the same settings.

3 The THOMSON TG185n as Wireless Access Point

4 The THOMSON TG185n as Wireless Repeater

Usage

Use this mode if you want to extend the coverage of an existing wireless network:



Terminology

The wireless access point to which we will try to connect can both be a stand-alone wireless access point or a built-in wireless access point (for example, your Internet Gateway may be equipped with a wireless access point). In the following pages we will just refer to it as your access point.

Configuring your THOMSON TG185n

If your Internet Gateway:

- Supports WPS, see "4.1 Automatic Configuration (Via WPS)" on page 22.
- Does not support WPS or you know if it does or not, see "4.2 Manual Configuration (Without WPS)" on page 26.

In this chapter

This chapter will help you to configure your THOMSON TG185n as wireless repeater.

4 The THOMSON TG185n as Wireless Repeater

4.1 Automatic Configuration (Via WPS)

WPS

Wi-Fi Protected Setup (WPS) allows you to connect new wireless devices to your network in a swift and easy way, without the need to enter all of your wireless settings (SSID, encryption,...).

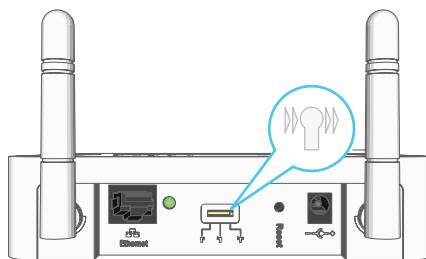
Requirements

- Your access point must supports WPS. Check the documentation of your access point for this.
- You can only use WPS with the following security levels:
 - ▶ WPA-PSK
 - ▶ WPA2-PSK
 - ▶ No encryption

Procedure

Proceed as follows:

- 1 On the back panel of your THOMSON TG185n, move the switch to the repeater position.



- 2 After a few seconds the **Repeater** LED will turn green.
- 3 Connect your THOMSON TG185n to you access point. The THOMSON TG185n supports the following options to do this:
 - ▶ Push Button Configuration (PBC):
This is the easiest way to connect your access point. You have to push a button both on the THOMSON TG185n and the access point. For more information, see "4.1.1 Push Button Configuration" on page 23.
 - ▶ PIN code entry on the access point:
The THOMSON TG185n generates a PIN code that you have to enter in the configuration utility of your access point. For more information, see "4.1.2 PIN Code Entry On The Access Point" on page 24.
 - ▶ PIN code entry on the THOMSON TG185n:
The access point generates a PIN code that you have to enter on the web interface of your THOMSON TG185n. For more information, see "4.1.3 PIN Code Entry On the THOMSON TG185n" on page 25.



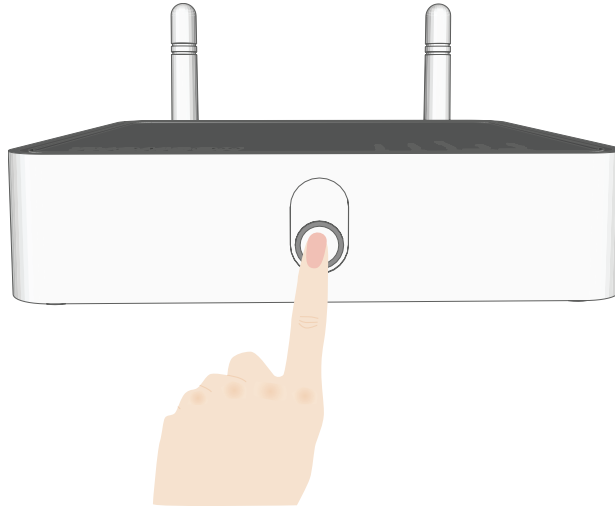
Your access point may not support all of these options. For more information, consult the documentation of your access point.

4.1.1 Push Button Configuration

Procedure

Proceed as follows:

- 1 Start Push Button Configuration on your access point. For more information, consult the documentation of your access point.
- 2 Shortly press the WPS button on your THOMSON TG185n:



- 3 The WPS button LED starts blinking green.



If the LED does not start to blink, WPS is not enabled on your THOMSON TG185n. For more information on how to enable WPS, see "WPS does not work" on page 51.

- 4 The WPS button LED will turn solid green when the configuration has been completed. After a few seconds the LED will turn off again.

4 The THOMSON TG185n as Wireless Repeater

4.1.2 PIN Code Entry On The Access Point

Get the THOMSON TG185n's PIN code

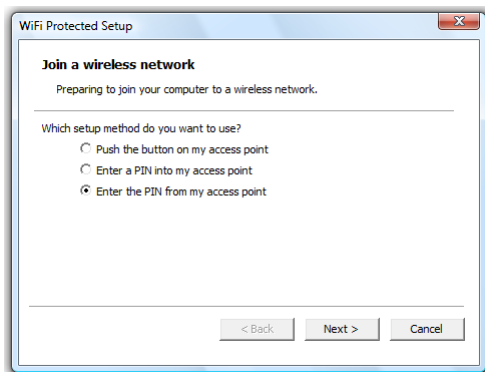
You can find the WIRELESS PIN:

- On the label on the bottom of your THOMSON TG185n.
- On the THOMSON TG185n Web Interface:
 - 1 Open your web browser and browse to <http://192.168.1.11>.
 - 2 On the **Basic Setting** menu, click **Wireless Setting**.
 - 3 You can find the PIN code in the **WPS Pin** box.

Enter the THOMSON TG185n's on your access point

Proceed as follows:

- 1 Open the configuration utility or web interface of your access point.
- 2 Start WPS on your access point and choose to enter a PIN code.



- 3 Enter the PIN code of your THOMSON TG185n and follow the instructions.

4.1.3 PIN Code Entry On the THOMSON TG185n

Get your access point's PIN code

Check the documentation of your THOMSON TG185n to know where to find the PIN code of your access point. You may find this PIN code:

- On a label on the housing
- On the configuration utility or web interface

Enter your access point's PIN code in the THOMSON TG185n web interface

Proceed as follows:

- 1 On the **Advanced Setting** menu, click **WPS Setting**.
- 2 Under **Select the WPS Method**, select PIN and enter the PIN code in the **Pin Number** box.
- 3 Click **Submit**.
- 4 Continue with the configuration on configuration utility or web interface of your access point.

4 The THOMSON TG185n as Wireless Repeater

4.2 Manual Configuration (Without WPS)

What you need

Before you start make sure you have the following information at hand:

- The Network ID (SSID) of your access point.
- The encryption key/passphrase used by your access point (if security is enabled).

For more information on how to find these items, consult the documentation of your access point.

Procedure

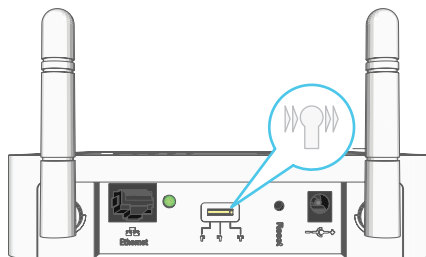
Before you can use your THOMSON TG185n as a repeater you have to complete following steps:

- 1 Switch the THOMSON TG185n to repeater mode.
- 2 Assign a static IP address to your computer.
- 3 Configure the wireless settings of your THOMSON TG185n.
- 4 Configure the IP settings of your THOMSON TG185n (optional).

Switch the THOMSON TG185n to repeater mode

Proceed as follows:

- 1 On the back panel of your THOMSON TG185n, move the switch to the repeater position.



- 2 After a few seconds the **Repeater** LED will turn green.

Assign a static IP address to your computer

The IP address must be between 192.168.1.14 and 192.168.1.63. The subnet mask must be **255.255.255.0**. For more information, see "7.1 Assigning a Static IP to Your Computer" on page 44.

Configure the wireless settings of your THOMSON TG185n

Proceed as follows:

- 1 Open your web browser and browse to <http://192.168.1.13>.
- 2 The THOMSON TG185n Web Interface appears. On the **Basic Setting** menu, click **Wireless Setting**.
- 3 The **Wireless Settings** page appears.
- 4 Under **Wireless configurations for repeater mode**, select **Universal Repeater**.
- 5 In the **Network ID (SSID)** box, type the SSID of your access point.
- 6 In the **Select Security Policy** list, select the same encryption as your access point.

4 The THOMSON TG185n as Wireless Repeater

- 7 Click **Apply**.
- 8 The THOMSON TG185n prompts you that the configuration was successful.

Configure the IP settings of your THOMSON TG185n (optional)

If you still want to be able to access your THOMSON TG185n after connecting it to your access point, you have to make sure that they are both using the same IP range.



If your access point is also a THOMSON product, this will automatically be the case and no extra configuration is needed.

If you choose not to do this configuration or you don't know the IP settings of your Internet Gateway, you will only be able to access the THOMSON TG185n by assigning a static IP address to your computer that is the same range as your THOMSON TG185n.

To change the IP settings of your THOMSON TG185n:

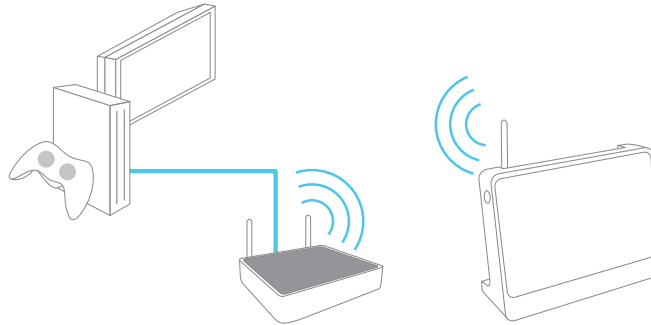
- 1 On the **Basic Setting** menu, click **Device IP Setting**.
- 2 The **Device IP Setting** page appears. On this page you can configure the IP address of your THOMSON TG185n. Select:
 - ▶ **Assign static IP address to this device** if you want to choose the IP address for your THOMSON TG185n yourself.
 - ▶ **Use the DHCP client protocol to automatically get the IP address for this device** if you want your access point to assign an IP address to your THOMSON TG185n. In this case you do not have to provide an **IP address**, **IP Subnet Mask** and **Gateway IP Address**.
- 3 In the **IP address** box, type an IP address that is in the same range as your Internet Gateway.
- 4 In the **IP Subnet Mask**, type the same subnet mask as your Internet Gateway.
- 5 In the **Gateway IP Address**, type the type the IP address of your Internet Gateway.
- 6 Write down this IP address and subnet mask. From now on, you can only access the THOMSON TG185n at this address.
- 7 You can now remove the Ethernet cable from your THOMSON TG185n and computer.

4 The THOMSON TG185n as Wireless Repeater

5 Your THOMSON TG185n as Wireless Client

Usage

Use this mode if you want to add wireless connectivity to an Ethernet device (for example: a laptop, a gaming console with Ethernet connectivity,...):



Terminology

The wireless access point to which we will try to connect can both be a stand-alone wireless access point or a built-in wireless access point (for example, your Internet Gateway may be equipped with a wireless access point). In the following pages we will just refer to it as your access point.

Default behaviour

If the THOMSON TG185n is still using its factory default settings, it will automatically repeat the strongest unsecured network.

Configuring your THOMSON TG185n

If your access point:

- Supports WPS, see “5.1 Automatic Configuration (Via WPS)” on page 30.
- Does not support WPS or you don't know if it does or not, see “5.2 Manual Configuration (Without WPS)” on page 33.

5 Your THOMSON TG185n as Wireless Client

5.1 Automatic Configuration (Via WPS)

WPS

Wi-Fi Protected Setup (WPS) allows you to connect the THOMSON TG185n to your access point in a swift and easy way, without the need to enter all of your wireless settings (SSID, encryption,...).

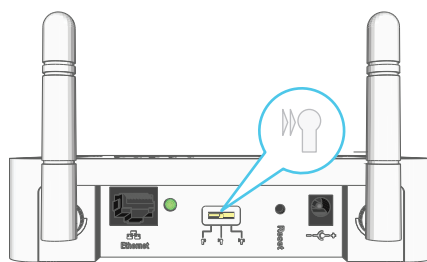
Requirements

- Your access point must support WPS. Check the documentation of your access point for this.
- WPS must be enabled on your THOMSON TG185n.
- You can only use WPS with the following security levels:
 - ▶ WPA-PSK
 - ▶ WPA2-PSK
 - ▶ No encryption

Procedure

Proceed as follows:

- 1 On the back panel of your THOMSON TG185n, move the switch to the client position.



- 2 After a few seconds the **Client** LED will turn green.
- 3 Configure the THOMSON TG185n with the wireless settings of your access point. The THOMSON TG185n supports the following options to do this:
 - ▶ Push Button Configuration (PBC):
This is the easiest way to connect your wireless client. You have to push a button both on your access point and the THOMSON TG185n. For more information, see "5.1.1 Push Button Configuration" on page 31.
 - ▶ PIN code entry on your THOMSON TG185n:
Your access point generates a PIN code that you have to enter on the web interface of your THOMSON TG185n. For more information, see "5.1.2 PIN Code From Your Access Point" on page 32.



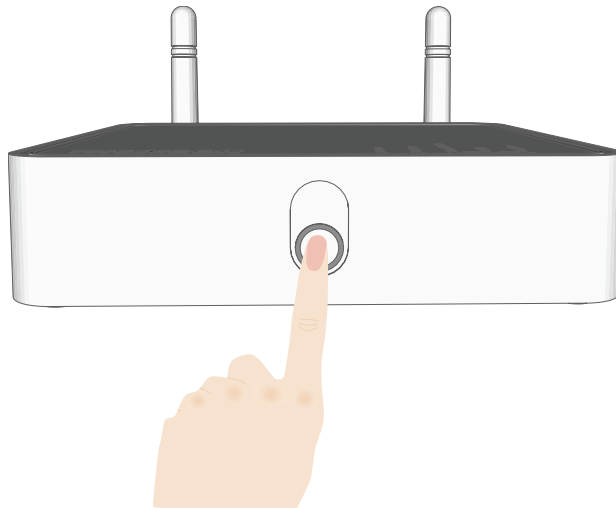
Your wireless client may not support all of these options. For more information, consult the documentation of your wireless client.

5.1.1 Push Button Configuration

Procedure

Proceed as follows:

- 1 Shortly press the WPS button on the THOMSON TG185n:



- 2 The WPS button LED starts blinking green. This indicates that the THOMSON TG185n is now searching for wireless clients that are in registration mode. You now have two minutes to start WPS on your wireless client.



If the LED does not start to blink, WPS is not enabled on your THOMSON TG185n. For more information on how to enable WPS, see "WPS does not work" on page 51.

- 3 Start WPS on your wireless client and choose Push Button Configuration (PBC) as method. For more information, consult the documentation of your wireless client.

5 Your THOMSON TG185n as Wireless Client

5.1.2 PIN Code From Your Access Point

Get the PIN code from your access point

Proceed as follows:

- 1 Open the configuration utility or web interface of your access point.
- 2 Start WPS and choose generate a PIN code or enter a PIN code into your wireless client.
- 3 Write down the PIN code.

Enter the PIN code in the THOMSON TG185n web interface

Proceed as follows:

- 1 On the **Advanced Setting** menu, click **WPS Setting**.
- 2 Under **Select the WPS Method**, select PIN and enter the PIN code in the **Pin Number** box.
- 3 Click **Submit**.
- 4 Continue with the configuration or web interface of your access point.

5.2 Manual Configuration (Without WPS)

Procedure

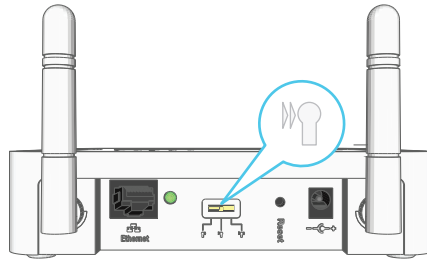
Before you can use your THOMSON TG185n as a repeater you have to complete following steps:

- 1 Switch the THOMSON TG185n to wireless client mode.
- 2 Assign a static IP address to your computer.
- 3 Connect the THOMSON TG185n to your access point.
- 4 Configure the IP settings of your THOMSON TG185n.
- 5 Configure your computer to obtain an IP address automatically.

Switch the THOMSON TG185n to wireless client mode

Proceed as follows:

- 1 On the back panel of your THOMSON TG185n, move the switch to the client position.



- 2 After a few seconds the **Client** LED will turn green.

Assign a static IP address to your computer

The IP address must be between 192.168.1.14 and 192.168.1.252. The subnet mask must be **255.255.255.0**. For more information, see "7.1 Assigning a Static IP to Your Computer" on page 44.

Connect the THOMSON TG185n to your access point

Proceed as follows:

- 1 Open your web browser and browse to <http://192.168.1.12>.
- 2 The THOMSON TG185n Web Interface appears. On the **Device Status** menu, click **Site Survey**.
- 3 The THOMSON TG185n lists all the access points that are within range.
- 4 Select your access point and click **Associate**.
- 5 If your access point is secured, the THOMSON TG185n will take you to the **Wireless Settings** page. Enter the passphrase/key used by your access point and click **Apply**.
- 6 The THOMSON TG185n prompts you that the configuration was successful.

5 Your THOMSON TG185n as Wireless Client

Configure the IP settings of your THOMSON TG185n

To change the IP settings of your THOMSON TG185n:

- 1 On the **Basic Setting** menu, click **Device IP Setting**.
- 2 The **Device IP Setting** page appears. On this page you can configure the IP address of your THOMSON TG185n. Select:
 - ▶ **Assign static IP address to this device** if you want to choose the IP address for your THOMSON TG185n yourself.
 - ▶ **Use the DHCP client protocol to automatically get the IP address for this device** if you want your access point to assign an IP address to your THOMSON TG185n. In this case you do not have to provide an **IP address**, **IP Subnet Mask** and **Gateway IP Address**.
- 3 In the **IP address** box, type an IP address that is in the same range as your access point.
- 4 In the **IP Subnet Mask**, type the same subnet mask as your access point.
- 5 In the **Gateway IP Address**, type the type the IP address of your access point.
- 6 Click **Apply**.
- 7 The THOMSON TG185n prompts you that the configuration was successful.
- 8 Write down this IP address and subnet mask. From now on, you can only access the THOMSON TG185n at this address.
- 9 Remove the Ethernet cable form your THOMSON TG185n and computer.

Configure your computer to obtain an IP address automatically

For more information, see "7.2 Restoring the IP Settings of Your Computer" on page 48.

6 THOMSON TG185n Basics

In this chapter

Topic	Page
THOMSON TG185n LED Behaviour	36
THOMSON TG185n Web Interface	40
Saving/Restoring Your Configuration	41

6.1 THOMSON TG185n LED Behaviour

Content

This chapter describes the behaviour of:

- Status LEDs
- WPS Button LED
- Ethernet LEDs

6.1.1 Status LEDs

Introduction

On the top panel of your THOMSON TG185n, you can find a number of status LEDs, indicating the state of the device during normal operation.

Power LED

Colour	State	Description
Green	Solid on	Power on, normal operation
Off		Power off

Wireless LED

Colour	State	Description
Green	Blinking	Wireless activity
	Solid on	Wireless service enabled, no activity
Off		No Ethernet connection

Access Point LED

When the LED is solid green, the THOMSON TG185n is in Wireless Access Point mode. For more information see "THOMSON TG185n Modes" on page 3.

Client LED

When the LED is solid green, the THOMSON TG185n is in Wireless Client mode. For more information see "THOMSON TG185n Modes" on page 3.

Repeater LED

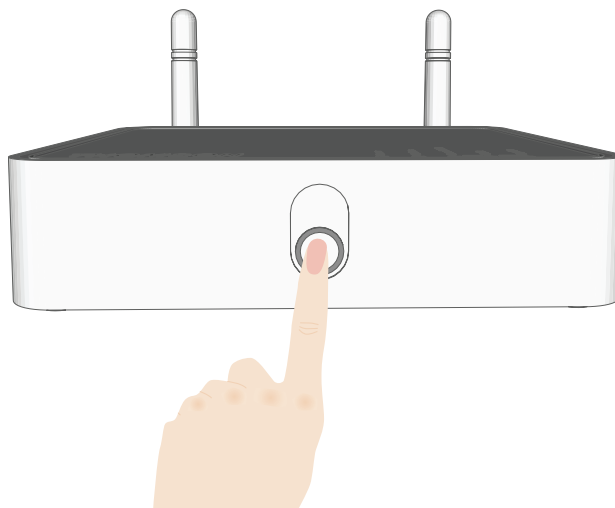
When the LED is solid green, the THOMSON TG185n is in Wireless Repeater mode. For more information see "THOMSON TG185n Modes" on page 3.

6 THOMSON TG185n Basics

6.1.2 WPS Button LED

Introduction

The WPS button allows you to connect the THOMSON TG185n with other wireless devices.



WPS LED

Colour	State	Description
green	Solid On	Client successfully registered via WPS
	Blinking	WPS registration ongoing
Off		No WPS registration ongoing.

6.1.3 Ethernet LEDs

Ethernet LED

On the right of the Ethernet port, you can find a LED indicating the link integrity (or activity).

LED Status	Description
Off	No connection on this port
Solid on	Ethernet link up
Blinking	Data is flowing from/to this port

6 THOMSON TG185n Basics

6.2 THOMSON TG185n Web Interface

Introduction

The THOMSON TG185n Web Interface allows you to configure your THOMSON TG185n using your web browser.

Requirements

Javascript must be enabled on your browser. For more information, consult the help of your Internet browser.

Accessing the THOMSON TG185n Web Interface

Proceed as follows:

- 1 Open your web browser.
- 2 If your THOMSON TG185n is switched to:
 - ▶ Access Point mode, browse to <http://192.168.1.11>.
 - ▶ Wireless Client mode, browse to <http://192.168.1.11>.
 - ▶ Repeater mode, browse to <http://192.168.1.11>.



If you have changed the IP address of your THOMSON TG185n during installation, use this IP address to access the THOMSON TG185n Web Interface.

- 3 The THOMSON TG185n Web Interface appears.
- 4 You can now browse through all configurable items of the THOMSON TG185n using the menu on the left. If you have protected your THOMSON TG185n with a password, the THOMSON TG185n will prompt you to enter your password. Enter your password and click **Log on**.

Please enter your password:

.....

(Forgot your password? - see the User Guide for instructions.)

Help

If you need help on how to configure an item in the THOMSON TG185n Web Interface, click the help link in the upper-right corner.

6.3 Saving/Restoring Your Configuration

Introduction

Once you have configured your THOMSON TG185n to your needs, it may be a good idea to save your configuration for later use. This way you can always return to your working configuration in case of problems.

Backing up your configuration

Proceed as follows:

- 1 Browse to the THOMSON TG185n Web Interface.
- 2 On the **System Tools** menu, click **Configuration Save and Restore**.
- 3 Under **Save Configuration**, click **Save to file**.
- 4 The THOMSON TG185n prompts you to save your file.
- 5 Save your file to a location of your choice.

Restoring your configuration

Proceed as follows:

- 1 Browse to the THOMSON TG185n Web Interface.
- 2 On the **System Tools** menu, click **Configuration Save and Restore**.
- 3 Under **Restore Configuration**, click **Browse**.
- 4 Open your backup file.
- 5 The THOMSON TG185n prompts you that the THOMSON TG185n will have to restart after restoring the configuration. Click **OK**.
- 6 The THOMSON TG185n restores your configuration.
- 7 After restarting, the THOMSON TG185n returns to the home page.

7 Support

Introduction

This chapter suggests solutions for problems you may encounter while installing or configuring your THOMSON TG185n.

If the suggestions do not resolve the problem, look at the support pages on <http://www.thomson-broadband.com> or contact your service provider.

Topics

This chapter describes the following topics:

Topic	Page
Assigning a Static IP to Your Computer	44
Restoring the IP Settings of Your Computer	48
General THOMSON TG185n Troubleshooting	49
Reset to Factory Defaults	52

7.1 Assigning a Static IP to Your Computer

IP addresses

In a network, each device carries a unique address, the IP address. If a network device wants to communicate with another network he will send his message to this IP address.

Why a static IP address?

These IP addresses are normally assigned to your computer by a dedicated server, the Dynamic Host Configuration Protocol (DHCP) server. This server can be integrated in your (Internet) gateway or located on the Internet. But since your THOMSON TG185n is currently not connected to either of these, we will have to manually assign an address to your computer.

How can I configure this on my computer?

If your computer runs:

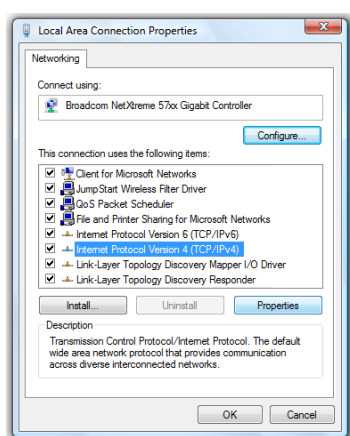
- Windows Vista, proceed with "7.1.1 Assigning a Static IP Address On Windows Vista" on page 45.
- Windows XP, proceed with "7.1.2 Assigning a Static IP Address On Windows XP" on page 46.
- Mac OS X, proceed with "7.1.3 Assigning a Static IP Address On Mac OS X" on page 47.
- Another operating system, consult the help of your operating system.

7.1.1 Assigning a Static IP Address On Windows Vista

Procedure

Proceed as follows:

- 1 On the Windows **Start** menu, click **Network**.
- 2 In the top bar, click **Networking and Sharing Center**.
- 3 In the **Tasks** list, click **Manage network connections**.
- 4 Right-click **Local Area Connection** and click **Properties**. If Windows prompts you for your permission, click **Continue**.
- 5 The **Local Area Connection Properties** window appears:



In the **This connection uses following items** list, select **Internet Protocol Version 4(TCP/IPv4)** and click **Properties**.

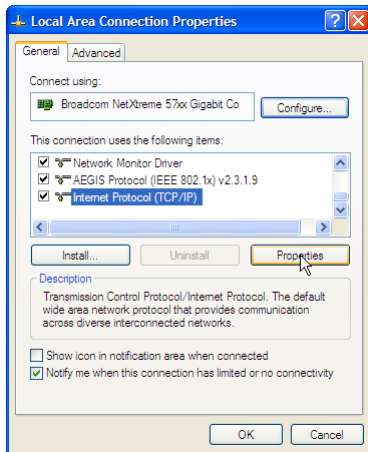
- 6 The **Internet Protocol Version 4 (TCP/IPv4)** window appears. Select **Use the Following IP address**.
- 7 In the **IP address** box, type an IP address between 192.168.1.14 and 192.168.1.63 (for example 192.168.1.20).
- 8 In the **Subnet mask** box, type **255.255.255.0**.
- 9 Click **OK**.
- 10 Click **OK**.

7.1.2 Assigning a Static IP Address On Windows XP

Procedure

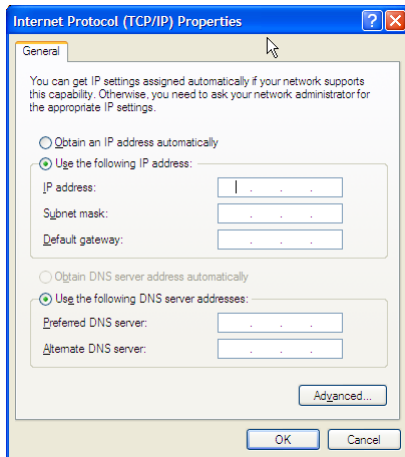
Proceed as follows:

- 1 On the Windows **Start** menu, click **Control Panel**.
- 2 Double-click **Network Connections** (if needed, switch to **Classic View** first).
- 3 Right-click **Local Area Connection** and click **Properties**.
- 4 The **Local Area Connection Properties** window appears:



In the **This connection uses following items** list, select **Internet Protocol (TCP/IP)** and click **Properties**.

- 5 The **Internet Protocol (TCP/IP)** window appears:



Select **Use the Following IP address**.

- 6 In the **IP address** box, type an IP address between 192.168.1.14 and 192.168.1.63 (for example 192.168.1.20).
- 7 In the **Subnet mask** box, type **255.255.255.0**.
- 8 Click **OK**.
- 9 Click **OK**.

7.1.3 Assigning a Static IP Address On Mac OS X

Procedure

Proceed as follows:

- 1 In the apple menu, click **System Preferences**.
- 2 Under **Internet & Network**, click **Network**.
- 3 Select **Built-in Ethernet** and click **Configure**.
- 4 In the **Configure IPv4** list, select **Manually**.
- 5 In the **IP Address** box, type an IP address between 192.168.1.14 and 192.168.1.63 (for example 192.168.1.20).
- 6 In the **Subnet Mask** box, type **255.255.255.0**.
- 7 Click **Apply Now**.

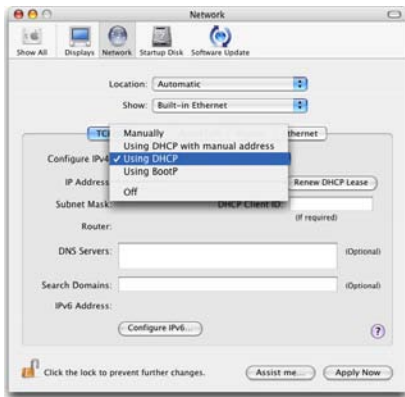
7.2 Restoring the IP Settings of Your Computer

MS Windows

Use the same procedure as described in “7.2 Restoring the IP Settings of Your Computer” on page 48, but select **Obtain an IP address automatically** instead of **Use the following IP address**.

Mac OS X

Use the same procedure as described in “7.2 Restoring the IP Settings of Your Computer” on page 48, but select **Using DHCP** instead of **Manually** in the **Configure IPv4** list:



7.3 General THOMSON TG185n Troubleshooting

THOMSON TG185n does not work

If none of the LEDs light up, make sure that:

- The THOMSON TG185n is plugged into a power socket outlet.
- You are using the correct power supply for your THOMSON TG185n device.



The power requirements for your THOMSON TG185n are clearly indicated on the identification label on the bottom of the THOMSON TG185n. Only use the power adaptor supplied with your THOMSON TG185n.

- The THOMSON TG185n is turned on via the push button or rocker switch on the back panel.

THOMSON TG185n unreachable

If your THOMSON TG185n cannot be reached due to misconfiguration, you might consider a hardware reset to factory defaults as described in “7.4 Reset to Factory Defaults” on page 52.

7.3.1 Wired Connection Troubleshooting

Ethernet LED does not light up

Make sure that:

- The Ethernet cable is securely connected to the **Ethernet** port on your THOMSON TG185n and your computer.
- You are using the correct cable type for your Ethernet equipment that is at least UTP CAT5 with RJ-45 connectors.

7.3.2 Wireless Connection Troubleshooting

WPS does not work

Make sure that WPS is enabled on your THOMSON TG185n:

- 1 Browse to the THOMSON TG185n Web Interface.
- 2 On the **Basic Setting** menu, click **Wireless Setting**.
- 3 The **Wireless Setting** page appears.
- 4 Select the **Enable WPS** check box.
- 5 Click **Apply**.
- 6 The THOMSON TG185n prompts you that the configuration was successful.

No Wireless Connectivity

Make sure that:

- The access point and wireless clients are allowed to connect through wireless channels as defined for local regulatory domain.
- The wireless client is configured for the correct wireless settings (SSID, security settings).
- Check the signal strength, indicated by the wireless client manager. If the signal is low, try repositioning the THOMSON TG185n or directing the THOMSON TG185n's antenna(s) for optimal performance.
- Make sure that the wireless client adapter is enabled (message like "radio on").

Poor Wireless Connectivity or Range

Try the following:

- Change the wireless channel of your access point. If you are also using a repeater, do not forget to change it also.
- Make sure both the access point and the wireless clients are allowed to connect through wireless channels as defined for local regulatory domain.
- Check the location of the access point in the building.
- Use WPA(2)-PSK as encryption.

Changing the wireless channel on a THOMSON TG185n in Access Point mode

Proceed as follows:

- 1 Browse to the THOMSON TG185n Web Interface.
- 2 On the **Basic Setting** menu, click **Wireless Setting**.
- 3 The **Wireless Setting** page appears.
- 4 In the **Channel** list, select the channel of your choice.
- 5 Click **Apply**.
- 6 The THOMSON TG185n prompts you that the configuration was successful.

7.4 Reset to Factory Defaults

Resetting your THOMSON TG185n

If at some point you can no longer connect to the THOMSON TG185n or you want to make a fresh install, it may be useful to perform a reset to factory defaults.

Warning

A reset to factory default settings deletes all configuration changes you made. Therefore, after the reset, a reconfiguration of your THOMSON TG185n will be needed.

Methods

You can choose between:

- Software Reset
- Hardware Reset

Software Reset

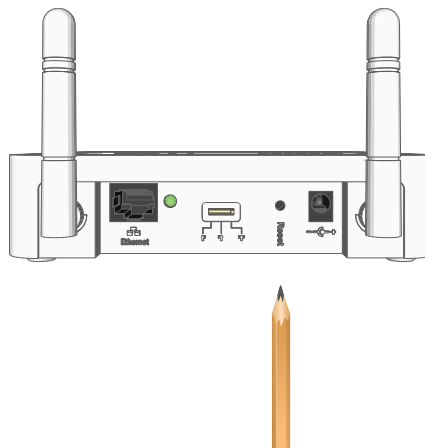
Proceed as follows:

- 1 Browse to the THOMSON TG185n Web Interface.
- 2 On the **System Tools** menu, click **Factory Default**.
- 3 Click **Yes**.
- 4 The THOMSON TG185n restores the initial configuration and restarts.

Hardware Reset

Proceed as follows:

- 1 Use a pen or an unfolded paperclip to push the recessed **Reset** button for 7 seconds.



- 2 Release the **Reset** button.
- 3 The THOMSON TG185n restores the initial configuration and restarts.

THOMSON Telecom Belgium

Prins Boudewijnlaan 47
2650 Edegem

www.thomson-broadband.com

© THOMSON 2008. All rights reserved.
E-DOC-CTC-20080624-0009 v0.2.



EN	Safety Instructions and Regulatory Notices Read this document prior to installation!	2
<hr/>		
FR	Consignes de sécurité et informations réglementaires Lisez ce document avant d'effectuer l'installation!	7
<hr/>		
DE	Sicherheitshinweise und Zulassungsbestimmungen Liest dieses Dokument vor Installation!	11
<hr/>		
ES	Instrucciones de seguridad y avisos sobre regulaciones Lea este documento antes de proceder a la instalación!	15
<hr/>		
PT	Regras de segurança e avisos de regulamentação Leia este documento antes de iniciar a instalação!	19
<hr/>		
IT	Precauzioni di sicurezza e informazioni sulla normativa Legger questo documento prima di eseguire l'installazione!	23
<hr/>		
SV	Säkerhetsföreskrifter och -Information Läs säkerhetsföreskrifterna noggrant!	27
<hr/>		
NL	Veiligheidsvoorschriften en regelgevingsinformatie Gelieve dit document te lezen alvorens te starten met installatie!	31

SAFETY INSTRUCTIONS AND REGULATORY NOTICES

BEFORE YOU START INSTALLATION OR USE OF THIS PRODUCT, CAREFULLY READ THESE INSTRUCTIONS



When using this product, always follow the basic safety precautions to reduce the risk of fire, electric shock and injury to persons, including the following:

- > Always install the product as described in the documentation that is included with your product.
- > Avoid using this product during an electrical storm. There may be a remote risk of electric shock from lightning.
- > Do not use this product to report a gas leak in the vicinity of the leak.

Wireless

In case this product is equipped with a wireless transceiver, it uses Direct Sequence Spread Spectrum (DSSS) / Orthogonal Frequency Division Modulation (OFDM) radio technology. As such it is designed to be inter-operable with any other wireless DSSS/OFDM type product that:

- > Complies with the IEEE802.11b/IEEE802.11g/IEEE802.11n Standard on Wireless LANs, as defined and approved by the Institute of Electrical and Electronics Engineers.
- > Is Wi-Fi® CERTIFIED™ as defined by the Wi-Fi® Alliance.

Directive

Unless express and prior approval by THOMSON in writing, you may not:

- > Disassemble, de-compile, reverse engineer, trace or otherwise analyse the equipment, its content, operation, or functionality,
or otherwise attempt to derive source code (or the underlying ideas, algorithms, structure or organization) from the equipment,
or from any other information provided by THOMSON, except to the extent that this restriction is expressly prohibited by local law;
- > Copy, rent, loan, re-sell, sub-license, or otherwise transfer or distribute the equipment to others;
- > Modify, adapt or create a derivative work of the equipment;
- > Remove from any copies of the equipment any product identification, copyright or other notices;
- > Disseminate performance information or analysis (including, without limitation, benchmarks) from any source relating to the equipment.

Such acts not expressly approved by THOMSON will result in the loss of product warranty and may invalidate the user's authority to operate this equipment in accordance with FCC Rules.

THOMSON disclaims all responsibility in the event of use that does not comply with the present instructions.

Environmental information - WEEE directive



This symbol means that your inoperative electronic appliance must be collected separately and not mixed with the household waste. The European Union has implemented a specific collection and recycling system for which producers' are responsible.

This appliance has been designed and manufactured with high quality materials and components that can be recycled and reused.

Electrical and electronic appliances are liable to contain parts that are necessary in order for the system to work properly but which can become a health and environmental hazard if they are not handled or disposed of in the proper way. Consequently, please do not throw out your inoperative appliance with the household waste.

If you are the owner of the appliance, you must deposit it at the appropriate local collection point or leave it with the vendor when buying a new appliance.

- > If you are a professional user, please follow your supplier's instructions.
- > If the appliance is rented to you or left in your care, please contact your service provider.

Please help us protect the environment in which we live!

Safety Instructions

Climatic conditions

This product:

- > Is intended for in-house stationary desktop use; the maximum ambient temperature may not exceed 40°C (104°F).
- > Must not be mounted in a location exposed to direct or excessive solar and/or heat radiation.
- > Must not be exposed to heat trap conditions and must not be subjected to water or condensation.
- > Must be installed in a Pollution Degree 2 environment (Environment where there is no pollution or only dry, nonconductive pollution).

Cleaning

Unplug this product from the wall socket and computer before cleaning. Do not use liquid cleaners or aerosol cleaners. Use a damp cloth for cleaning.

Water and moisture

Do not use this product near water, for example, near a bathtub, washbowl, kitchen sink, laundry tub, in a wet basement or near a swimming pool. Transition of the product from a cold environment to a hot one, may cause condensation on some of its internal parts. Allow it to dry by itself before re-starting the product.

Interface classifications

The external interfaces on the rear panel of the product are classified as follows:

- > All interface ports (e.g. Ethernet, 10/100Base-T/MDI(-X), etc.), including the low voltage power input from the AC mains power supply: SELV circuits.

Electrical powering

The powering of the product must adhere to the power specifications indicated on the marking labels.

The power supply must be Class II and a Limited Power Source in accordance with the requirements of IEC60950-1/EN60950-1, Clause 2.5 and rated or as indicated on the label on the bottom side of your product. It must be tested and approved to national or local standards.

For US and Canada: This product is intended to be supplied by a Listed Direct Plug-in, or Desktop Power Unit marked "Class 2" and rated or as indicated on the label on the bottom side of your product.

The use of other types of supplies is prohibited. If you are not sure of the type of power supply needed, consult the product's user documentation or contact your local product dealer.

Accessibility

The Direct Plug-in power supply, or the plug on the power supply cord serves as disconnect device. Be sure that the power socket outlet you plug the power supply into is easily accessible and located as close to the equipment as possible.

Overloading

Do not overload mains supply socket outlets and extension cords as this increases the risk of fire or electric shock.

Servicing

To reduce the risk of electric shock, do not disassemble this product. None of its internal parts are user-replaceable; therefore, there is no reason to access the interior. Opening or removing covers may expose you to dangerous voltages. Incorrect reassembly could cause electric shock if the appliance is subsequently used.

If service or repair work is required, take it to a qualified service dealer.

Damage requiring service

Unplug this product from the wall outlet and refer servicing to qualified service personnel under the following conditions:

- > When the power supply or its plug are damaged.
- > When the attached cords are damaged or frayed.
- > If liquid has been spilled into the product.
- > If the product has been exposed to rain or water.
- > If the product does not operate normally.
- > If the product has been dropped or damaged in any way.
- > There are noticeable signs of overheating.
- > If the product exhibits a distinct change in performance.

Immediately disconnect the product if you notice it giving off a smell of burning or smoke. Under no circumstances must you open the equipment yourself; you run the risk of electrocution.

Regulatory Information

You must install and use this device in strict accordance with the manufacturer's instructions as described in the user documentation that is included with your product.

Before you start installation or use of this product, carefully read the contents of this document for device specific constraints or rules that may apply in the country where you want to use this product.

In some situations or environments, the use of wireless devices may be restricted by the proprietor of the building or responsible representatives of the organization.

If you are uncertain of the policy that applies on the use of wireless equipment in a specific organization or environment (e.g. airports), you are encouraged to ask for authorization to use this device prior to turning on the equipment.

THOMSON is not responsible for any radio or television interference caused by unauthorized modification of the device, or the substitution or attachment of connecting cables and equipment other than specified by THOMSON. The correction of interference caused by such unauthorized modification, substitution or attachment will be the responsibility of the user.

THOMSON and its authorized resellers or distributors are not liable for any damage or violation of government regulations that may arise from failing to comply with these guidelines.

Europe - European Union

European Community Declaration of Conformity



Hereby, THOMSON, declares that this product is in compliance with the essential requirements and other relevant provisions of Directive 1999/5/EC of the European Parliament and of the Council.

This equipment can be used in all countries that are member of the European Union and that are member of the European Free Trade Association.

The Declaration of Conformity can be found on www.thomson-broadband.com.

In case this product is equipped with a wireless transceiver:

- > it is restricted to indoor use only.
- > it complies with the basic restrictions and limits as defined in the European Council Recommendation (1999/519/EC) on the limitation of exposure of the general public to Electromagnetic fields.

North-America - Canada

Notification of Canadian Radio Frequency Interference Statement

This Class B digital apparatus complies with Canadian ICES-003.

NOTICE: This product meets the applicable Industry Canada technical specifications.

Canada - Industry Canada (IC)

In case this product is equipped with a wireless transceiver, it complies with RSS 210 of Industry Canada.

Restricted Frequency Band

In case this product is equipped with a wireless transceiver, it may only use channels 1 to 11 (2412 to 2462 MHz) on Canada territory.

North-America - United States of America

Federal Communications Commission (FCC) Interference Statement



This equipment has been tested and found to comply with the limits for a Class B digital device, pursuant to Part 15 of the FCC Rules. These limits are designed to provide reasonable protection against harmful interference in a residential installation.

This equipment generates, uses and can radiate radio frequency energy and, if not installed and used in accordance with the instructions, may cause harmful interference to radio communications. However, there is no guarantee that interference will not occur in a particular installation. If this equipment does cause harmful interference to radio or

television reception, which can be determined by turning the equipment off and on, the user is encouraged to try to correct the interference by one or more of the following measures:

- > Reorient or relocate the receiving antenna.
- > Increase the separation between the equipment and receiver.
- > Connect the equipment into an outlet on a circuit different from that to which the receiver is connected.
- > Consult the dealer or an experienced radio/TV technician for help.

FCC Caution: Any changes or modifications not expressly approved by the party responsible for compliance could void the user's authority to operate this equipment.

This device complies with Part 15 of the FCC Rules. Operation is subject to the following two conditions:

- 1 This device may not cause harmful interference, and
- 2 This device must accept any interference received, including interference that may cause undesired operation.

IMPORTANT NOTE: Radiation Exposure Statement

This equipment complies with FCC radiation exposure limits set forth for an uncontrolled environment. End users must follow the specific operating instructions for satisfying RF exposure compliance. To maintain compliance with FCC RF exposure compliance requirements, please follow operation instruction as documented in this manual.

This transmitter must not be co-located or operating in conjunction with any other antenna or transmitter.

The availability of some specific channels and/or operational frequency bands are country dependent and are firmware programmed at the factory to match the intended destination. The firmware setting is not accessible by the end user.

Restricted Frequency Band

In case this product is equipped with a wireless transceiver, it may only use channels 1 to 11 (2412 to 2462 MHz) on U.S.A. territory.

CONSIGNES DE SÉCURITÉ ET INFORMATIONS RÉGLEMENTAIRES

AVANT D'INSTALLER OU D'UTILISER CE PRODUIT, LISEZ ATTENTIVEMENT CES INSTRUCTIONS



Lorsque vous utilisez ce produit, respectez toujours les précautions de sécurité de base suivantes afin de réduire le risque d'incendie, de décharge électrique et de blessure :

- > Installez toujours le produit tel que décrit dans la documentation jointe à votre produit.
- > Évitez d'utiliser ce produit pendant un orage. La foudre peut provoquer un risque d'électrocution.
- > N'utilisez pas ce produit pour signaler une fuite de gaz dans les environs de la fuite.

Sans fil

Si le produit est équipé d'un émetteur-récepteur sans fil, il utilise la technologie radio DSSS (Modulation du spectre à séquence directe) / OFDM (Multiplexage par répartition orthogonale de la fréquence). Il est donc ainsi compatible avec les autres produits sans fil de type DSSS/OFDM qui :

- > Est conforme à la norme IEEE802.11b/IEEE802.11g/IEEE802.11n des LAN sans fil, telle que définie et approuvée par l'Institut des ingénieurs en électricité et électronique.
- > Est Wi-Fi® CERTIFIED™ comme défini par la Wi-Fi® Alliance.

Directive

Sauf accord écrit exprès et préalable de THOMSON, vous ne pouvez pas :

- > Démontez, décompiler, effectuer des études techniques inverses, examiner ou analyser de quelque manière que ce soit l'appareil, son contenu, son fonctionnement ou ses fonctionnalités, ni tenter de copier le code source (ou les concepts sous-jacents, les algorithmes, la structure ou l'organisation) de l'appareil ou de toute autre information fournie par THOMSON, sauf si cette restriction est expressément interdite par la législation locale ;
- > Copier, louer, prêter, revendre, mettre sous licence, ni transférer ou distribuer l'appareil à des tiers ;
- > Modifier, adapter ou créer une pièce dérivée du matériel ;
- > Supprimer d'une copie du matériel l'identification du produit, avis de copyright ou autre ;
- > Diffuser des informations ou analyses relatives aux performances de l'appareil (y compris et sans restriction, les tests de performance) provenant d'une source quelconque liée à l'appareil.

Ces actes, réalisés sans l'accord exprès de THOMSON, entraînent la perte de la garantie du produit et enlèvent à l'utilisateur le droit d'utiliser l'équipement.

THOMSON rejette toute responsabilité en cas d'utilisation de l'équipement non conforme aux présentes instructions.

Environnement - Directive WEEE



Ce symbole signifie que lorsque votre appareil électronique ne fonctionne plus, vous ne pouvez pas le jeter avec les déchets ménagers, mais dans un endroit de collecte approprié. L'Union européenne a instauré un système de collecte et de recyclage spécifique dont sont responsables les producteurs.

Cet appareil a été conçu et fabriqué avec des matériaux et des composants de haute qualité qui peuvent être recyclés et réutilisés.

Les appareils électriques et électroniques sont susceptibles de contenir des éléments nécessaires au bon fonctionnement du système, mais qui peuvent présenter un danger pour la santé et l'environnement s'ils ne sont pas manipulés et jetés de manière adéquate. Par conséquent, veuillez ne pas jeter votre appareil avec les déchets ménagers.

Si vous êtes le propriétaire de l'appareil, vous devez le jeter dans un point de collecte local approprié ou le remettre au vendeur lorsque vous achetez un nouvel appareil.

- > Si vous êtes un utilisateur professionnel, veuillez respecter les instructions du fournisseur.
- > Si l'appareil est loué ou laissé à votre soin, veuillez contacter votre fournisseur de services.

Veuillez nous aider à protéger l'environnement dans lequel nous vivons !

Consignes de sécurité

conditions climatiques

Ce produit :

- > Est destiné à être utilisé sur un bureau intérieur, stable ; la température ambiante ne peut dépasser 40 °C (104 °F).
- > Ne peut être monté à un emplacement exposé aux rayons solaires et/ou thermiques directs ou excessifs.
- > Ne peut être exposé à des conditions d'effets de serre et ne peut se trouver en présence d'eau ou de condensation.
- > Doit être installé dans un environnement présentant une pollution de degré 2 (environnement exempt de pollution ou uniquement avec pollution sèche, non conductrice).

Nettoyage

Débranchez l'appareil de la prise murale et de l'ordinateur avant de le nettoyer. N'utilisez pas de détergents liquides ni d'aérosols. Utilisez un tissu humide pour le nettoyage.

Eau et humidité

N'utilisez pas ce produit à proximité d'une arrivée d'eau, par exemple près d'une baignoire, d'un lavabo, d'un évier, d'une machine à laver, dans un sous-sol humide ou près d'une piscine. Le transfert de ce produit d'un environnement froid vers un environnement chaud peut entraîner l'apparition de condensation sur certaines parties internes. Laissez l'appareil sécher avant de le remettre en marche.

Classification des interfaces

Les interfaces externes situées sur le panneau arrière du modem sont classées comme suit :

- > Tous les ports d'interface (Ethernet, 10/100Base-T/MDI(-X), etc.), y compris l'entrée d'alimentation basse tension depuis l'alimentation principale c.a. : circuits SELV.

Alimentation électrique

L'alimentation du produit doit respecter les spécifications en matière d'alimentation figurant sur les étiquettes. L'alimentation doit être de Classe II et de source limitée conformément aux exigences de la norme IEC60950-1/EN60950-1, Clause 2.5 et avoir une puissance de ou telle qu'indiquée sur l'étiquette sous le produit. Elle doit être testée et répondre aux normes nationales ou locales.

États-Unis et Canada: Ce produit doit être alimenté par un des plug-in directs listés, ou une alimentation bureau de Classe 2 et avoir une puissance de ou telle qu'indiquée sur l'étiquette sous le produit.

L'utilisation d'autres types de sources d'alimentation est interdite. Si vous n'êtes pas certain du type d'alimentation nécessaire, consultez la documentation fournie avec le produit ou contactez votre revendeur local.

Accessibilité

L'alimentation par plug-in direct, ou la prise du cordon d'alimentation permet également de déconnecter l'appareil. Assurez-vous que la prise dans laquelle vous branchez le cordon d'alimentation est facilement accessible et est située le plus près possible de l'équipement.

Surcharge

Ne surchargez pas les prises d'alimentation secteur ni les rallonges, car ceci augmente les risques d'incendie et d'électrocution.

Entretien/réparation

Afin de diminuer le risque de décharge électrique, ne démontez pas le produit. Aucune de ses pièces internes ne peut être remplacée par un non-professionnel ; il n'y a dès lors pas de raison de l'ouvrir. L'ouverture ou l'enlèvement des couvercles peut vous exposer à de dangereuses tensions. Si l'appareil est mal réassemblé, il peut provoquer une électrocution lors de la prochaine utilisation.

Si l'appareil nécessite une réparation ou un entretien, confiez-le à un réparateur qualifié.

Problème nécessitant une réparation

Débranchez le produit de la prise d'alimentation murale et confiez-le à du personnel de réparation qualifié, si l'un des problèmes suivants survient :

- > Lorsque le cordon d'alimentation ou la fiche est endommagé ;
- > Lorsque les cordons d'alimentation sont endommagés ou effilochés ;
- > Si du liquide s'est répandu sur le produit ;
- > Si le produit a été exposé à la pluie ou à l'eau ;
- > Si le produit ne fonctionne pas normalement ;
- > Si le produit est tombé ou a été abîmé d'une manière ou d'une autre ;
- > S'il y a un signe perceptible de surchauffe ;
- > Si le produit présente des variations importantes au niveau des performances.

Débranchez immédiatement le produit si vous remarquez qu'il s'en dégage une odeur de brûlé ou de la fumée. Vous ne devez en aucun cas ouvrir l'appareil vous-même car vous risquez d'être électrocuté.

Informations réglementaires

Vous devez installer et utiliser cet appareil en respectant strictement les instructions du fabricant, telles que décrites dans la documentation utilisateur fournie avec votre produit.

Avant d'installer ou d'utiliser ce produit, lisez attentivement ce document afin de prendre connaissance des contraintes ou règles spécifiques d'application dans le pays dans lequel vous allez utiliser ce produit.

Dans certains cas ou environnements, l'utilisation de périphériques sans fil peut être interdite par le propriétaire du bâtiment ou les responsables de l'entreprise.

Si vous ne connaissez pas la règle en vigueur quant à l'utilisation de matériel sans fil dans une entreprise ou un environnement particulier (p. ex., les aéroports), nous vous conseillons de demander l'autorisation avant de mettre l'appareil sous tension.

THOMSON n'est pas responsable des interférences dans la radio ou la télévision provoquées par une modification non autorisée de l'appareil ou par le remplacement ou la fixation de câbles de connexion et de matériel autres que ceux spécifiés par THOMSON. La correction des interférences provoquées par ces conditions revient à l'utilisateur. THOMSON et ses revendeurs ou distributeurs agréés ne sont pas responsables des dommages ou violations des règles gouvernementales qui pourraient survenir suite au non-respect de ces instructions.

Europe – Union européenne

Déclaration de conformité pour la Communauté européenne



Par la présente, THOMSON déclare que ce produit est conforme aux principales exigences et autres dispositions applicables de la directive 1999/5/EC du Parlement européen et du Conseil.

Cet appareil peut être utilisé dans tous les pays membres de l'Union européenne et membres de l'Association européenne de libre échange.

Vous pouvez trouver la déclaration de conformité sur le site www.thomson-broadband.com.

Si ce produit est équipé d'un émetteur/récepteur sans fil :

- > Il ne peut être utilisé qu'à l'intérieur ;
- > Il est conforme aux restrictions et limites définies dans la recommandation du Conseil européen (1999/55/EC) sur la limite de l'exposition du public aux champs électromagnétiques.

Amérique du Nord - Canada

Notification des comptes-rendus des interférences de fréquence radio au Canada

Cet appareil numérique de classe B est conforme à la norme canadienne ICES-003.

AVIS : Ce produit répond aux spécifications techniques en vigueur de l'industrie canadienne.

Canada – Industrie Canada (IC)

Si le produit est équipé d'un émetteur-récepteur sans fil IEEE802.11b/IEEE802.11g/IEEE802.11n, il est conforme à la norme RSS 210 d'Industrie Canada.

Bande de fréquences limitée

Si le produit est équipé d'un émetteur-récepteur sans fil IEEE802.11b/IEEE802.11g/IEEE802.11n, il peut uniquement utiliser les canaux 1 à 11 (2 412 à 2 462 MHz) sur le territoire canadien.

SICHERHEITSHINWEISE UND ZULASSUNGSBESTIMMUNGEN

BEVOR SIE DIESES PRODUKT INSTALLIEREN ODER VERWENDEN, LESEN SIE DIE FOLGENDEN HINWEISE



Um einen elektrischen Schlag, einen Brand und/oder eine gesundheitliche Gefährdung bei der Verwendung des Produkts zu vermeiden, sollten Sie folgende grundlegende Sicherheitshinweise beachten:

- > Installieren Sie das Produkt ausschließlich wie in der mitgelieferten Dokumentation beschrieben.
- > Verwenden Sie das Produkt nicht bei Gewitter. Dadurch schließen Sie das mögliche Risiko einer gesundheitlichen Gefährdung durch einen Blitzeinschlag aus.
- > Verwenden Sie dieses Produkt nicht, um im Falle eines Gasaustritts in unmittelbarer Nähe das Leck zu melden.

Funkverbindung

Wenn dieses Produkt mit einem Funk-Transceiver ausgestattet ist, werden die Modulationsverfahren DSSS und OFDM (Direct Sequence Spread Spectrum und Orthogonal Frequency Division Modulation) eingesetzt. Das Produkt lässt sich mit anderen WLAN-fähigen Geräten, die DSSS/OFDM nutzen, verbinden, wenn:

- > das Gerät die Standards IEEE802.11b, IEEE802.11g und IEEE802.11n des Institute of Electrical and Electronics Engineers (IEEE) unterstützt.
- > das Gerät gemäß der Wi-Fi® Alliance „Wi-Fi® CERTIFIED™“ ist.

Betriebsanleitung

Sofern nicht ausdrücklich und eindeutig in schriftlicher Form von THOMSON erlaubt, ist es nicht gestattet:

- > das Gerät zu demontieren, den Inhalt zu extrahieren, die Betriebsweise oder Funktionalität nachzubauen, nachzuempfinden oder auf eine andere Weise zu analysieren oder zu versuchen, den Quellcode (oder die zu Grunde liegenden Ideen, Algorithmen, Strukturen oder Organisationen) vom Gerät
oder von jeglichen anderen von THOMSON gelieferten Informationen abzuleiten, es sei denn, dass es das anwendbare Recht ungeachtet dieser Einschränkung ausdrücklich gestattet,
- > eine Kopie des Geräts zu erstellen, das Gerät an Dritte zu vermieten, zu verleihen, wiederzuverkaufen, zu lizenzieren oder auf andere Weise weiterzuvermitteln oder zu vertreiben,
- > das Gerät zu modifizieren, anzupassen oder einen Nachbau davon anzufertigen,
- > die Produktkennung, Urheberrechtsvermerke oder andere Angaben von Exemplaren dieses Geräts zu entfernen,
- > aus beliebigen Quellen stammende gerätespezifische Leistungsdaten oder -analysen zu verbreiten (einschließlich Benchmarks, ohne jede Einschränkung).

Bei Zuwiderhandlung ist mit dem Verlust des Gewährleistungsschutzes und der Betriebserlaubnis zu rechnen. THOMSON übernimmt keinerlei Haftung, wenn das Gerät nicht gemäß der vorliegenden Betriebsanleitung verwendet wird.

Umweltschutzinformationen – WEEE-Richtlinie



Dieses Symbol bedeutet, dass dieses elektronische Gerät bei seiner Außerbetriebnahme separat entsorgt werden muss und nicht in den Hausmüll gehört. Die Europäische Union stellt ein spezielles Sammel- und Recycling-System bereit, für dessen Nutzung die Hersteller verantwortlich sind.

Für dieses Gerät wurden ausschließlich qualitativ hochwertige Materialien und Komponenten verwendet, die recycelt und wiederverwendet werden können.

Elektrische und elektronische Geräte können für eine ordnungsgemäße Betriebsfähigkeit Teile oder Komponenten enthalten, von denen bei unsachgemäßer Handhabung oder Entsorgung eine Gefährdung von Gesundheit und Umwelt ausgeht. Entsorgen Sie daher Ihr nicht mehr funktionstüchtiges Gerät nicht im Hausmüll.

Als Besitzer eines solchen Geräts sind Sie verpflichtet, das Gerät an einer der örtlichen Sammelstellen zu entsorgen oder bei Ihrem Händler abzugeben, wenn Sie dort ein neues Gerät kaufen.

- > Wenn Sie das Gerät beruflich nutzen, beachten Sie die Anweisungen des Gerätebereitstellers.
- > Wenn Sie das Gerät gemietet haben oder anderweitig temporär dafür verantwortlich sind, wenden Sie sich an den Dienstleister.

Helfen Sie mit, unsere Umwelt zu schützen.

Sicherheitshinweise

Klimatische Bedingungen

Dieses Produkt:

- > Ist für den stationären Einsatz in Innenraumumgebungen (Büro) vorgesehen, wobei die maximale Umgebungstemperatur 40 °C nicht übersteigen darf.
- > Darf keiner direkten oder übermäßigen Sonneneinstrahlung und/oder Hitze ausgesetzt werden.
- > Darf keinen Hitzestaus ausgesetzt werden und nicht mit Wasser oder Kondenswasser in Berührung kommen.
- > Darf nicht in Umgebungen eingesetzt werden, die den Verschmutzungsgrad 2 überschreiten (Die Umgebung muss frei von Verschmutzungen sein oder darf höchstens trockene, nicht leitende Verschmutzungseigenschaften aufweisen.)

Reinigung

Trennen Sie das Gerät vor der Reinigung von der Steckdose und vom Computer. Verwenden Sie keine flüssigen Reinigungsmittel oder Sprühreiniger. Reinigen Sie das Gerät mit einem feuchten Tuch.

Wasser und Feuchtigkeit

Verwenden Sie das Gerät nicht in der Nähe von Wasser, wie beispielsweise einer Badewanne, Wasserschüssel, Spüle, einer Waschmaschine, in einem feuchten Keller oder in der Nähe eines Schwimmbbeckens. Beim Transport von einer kalten in eine sehr warme Umgebung kann sich im Inneren des Geräts Kondenswasser bilden. Lassen Sie das Gerät von selbst trocknen, ehe Sie es einschalten.

Schnittstellenklassifizierungen

Die externen Schnittstellen an der Rückseite des Geräts werden wie folgt klassifiziert:

- > Alle Anschlüsse (z. B. Ethernet, 10/100Base-T/MDI(X), usw.), einschließlich Niederspannungseingang (AC): SELV-Stromkreis.

Stromversorgung

Die auf dem Typenschild des Produkts angegebene Netzspannung muss mit der Ihres Stromnetzes übereinstimmen. Die Stromversorgung muss gemäß IEC60950-1/EN60950-1, Abschnitt 2.5, der Klasse II entsprechen und aus einer begrenzten Stromquelle stammen. Die Gerät benötigt eine Versorgungsspannung von oder wie auf der Unterseite des Geräts angegeben. Das Gerät muss den nationalen und vor Ort geltenden Standards entsprechen.

Die Verwendung anderer Arten von Stromversorgungen ist nicht gestattet. Falls Sie nicht sicher sind, ob Sie über eine geeignete Stromversorgung verfügen, beachten Sie bitte die mit dem Produkt gelieferten Unterlagen, oder wenden Sie sich an Ihren örtlichen Händler.

Zugang

Durch Herausziehen des Steckernetzteils trennen Sie das Gerät vom Stromnetz. Achten Sie darauf, dass die Netzsteckdose, an die Sie das Netzteil anschließen, leicht zugänglich ist und sich möglichst nah beim Gerät befindet.

Überlastung

Vermeiden Sie eine Überlastung der Hauptsteckdosen mit Mehrfachsteckern und Verlängerungskabeln. Dies erhöht die Brandgefahr und das Risiko von Stromschlägen.

Kundendienst

Um das Risiko von Stromschlägen zu verringern, sollten Sie dieses Gerät nicht auseinandernehmen. Keines der inneren Teile kann vom Benutzer ausgetauscht werden, daher besteht keine Veranlassung, das Gerät zu öffnen. Beim Öffnen des Geräts oder Entfernen der Abdeckungen können Sie sich gefährlichen Spannungen aussetzen. Wird das Gerät fehlerhaft zusammengebaut, besteht beim anschließenden Einschalten des Geräts die Gefahr von Stromschlägen.

Wenn Wartungs- oder Reparaturarbeiten erforderlich sind, bringen Sie das Gerät zu einem qualifizierten Servicehändler.

Fehlerbehebung

Trennen Sie das Gerät von der Steckdose, und überlassen Sie die Arbeiten qualifiziertem Kundendienstpersonal, wenn eines der folgenden Probleme auftritt:

- > Das Netzteil oder der Netzstecker sind beschädigt.
- > Die angeschlossenen Netzkabel sind beschädigt oder abgenutzt.
- > In das Gerät ist Flüssigkeit eingedrungen.
- > Das Gerät war Regen oder Wasser ausgesetzt.
- > Das Gerät funktioniert nicht ordnungsgemäß.
- > Das Gerät wurde fallengelassen oder in anderer Weise beschädigt.
- > Das Gerät weist Zeichen von Überhitzung auf.
- > Das Gerät weist eine erheblich veränderte Leistung auf.

Trennen Sie das Gerät unverzüglich vom Netz, wenn Sie Brandgeruch oder Rauch feststellen. Öffnen Sie das Gerät auf keinen Fall selbst, Sie könnten einen Stromschlag erhalten.

Zulassungsbestimmungen

Installieren und verwenden Sie das Gerät nur entsprechend den Herstellervorgaben, die Sie in der mitgelieferten Benutzerdokumentation finden.

Bevor Sie mit der Installation beginnen oder das Gerät verwenden, sollten Sie die Dokumentation sorgfältig durchlesen, um sich mit möglichen Beschränkungen und Richtlinien, die für das Produkt in Ihrem Land gelten, vertraut zu machen.

In bestimmten Situationen und Umgebungen kann die Nutzung von WLAN- oder Mobilfunkgeräten vom Gebäudeinhaber oder von einer weisungsberechtigten Person vor Ort untersagt bzw. eingeschränkt werden.

Wenn Sie nicht sicher sind, inwieweit entsprechende Nutzungseinschränkungen oder -verbote in einer Einrichtung (z. B. Flughafen oder Krankenhaus) gelten, wenden Sie sich an eine weisungsberechtigte Person vor Ort, und erkundigen Sie sich, bevor Sie das Gerät verwenden.

THOMSON ist nicht verantwortlich für den Radio- oder TV-Empfang beeinträchtigende Interferenzen, die von einer nicht erlaubten Modifizierung des Geräts oder von der Hinzufügung/Entfernung von Verbindungskabeln und Komponenten herrühren, die nicht von THOMSON spezifiziert sind. Der Benutzer ist dafür verantwortlich, Interferenzen zu beseitigen, die durch nicht genehmigte Änderungen, Hinzufügungen oder Entfernungen am Gerät entstanden sind.

THOMSON und die autorisierten Händler oder Anbieter übernehmen keinerlei Haftung für Schäden oder Verstöße gegen staatliche Bestimmungen, die aus einer Nichteinhaltung dieser Richtlinien resultieren.

Europa – Europäische Union

Konformitätserklärung der Europäischen Gemeinschaft



Hiermit erklärt THOMSON, dass sich dieses Produkt in Übereinstimmung mit den grundlegenden Anforderungen und den anderen relevanten Vorschriften der Richtlinie 1999/5/EC des Europäischen Parlaments und des Europarates befindet.

Dieses Gerät darf in den Ländern der Europäischen Union sowie in allen Ländern der EFTA (Mitgliedsländer der Europäischen Freihandelsorganisation) verwendet werden.

Die Konformitätserklärung finden Sie unter www.thomson-broadband.com.

Wenn dieses Produkt mit einem Funk-Transceiver ausgestattet ist:

- > darf es nur in geschlossenen Räumen verwendet werden.
- > stimmt es mit den grundlegenden Anforderungen und den anderen relevanten Vorschriften des Europarates (1999/519/EC) zur Begrenzung von elektromagnetischen Emissionen in der Öffentlichkeit überein.

INSTRUCCIONES DE SEGURIDAD Y AVISOS SOBRE REGULACIONES

ANTES DE INICIAR LA INSTALACIÓN O UTILIZAR ESTE PRODUCTO, LEA ESTAS INSTRUCCIONES CON ATENCIÓN



Quando utilice este producto, siga siempre las instrucciones de seguridad básicas para reducir el riesgo de incendio, descargas eléctricas y lesiones personales, incluidas las siguientes:

- > Instale siempre el producto tal y como se describe en la documentación que se incluye con el producto.
- > Evite el uso de este producto durante una tormenta eléctrica. Existe un riesgo remoto de descarga eléctrica debida a un rayo.
- > No utilice este producto para informar de una fuga de gas cerca de donde haya una fuga.

Inalámbrico

Si este producto está equipado con un transmisor-receptor inalámbrico, utilizará tecnología de radio DSSS (Direct Sequence Spread Spectrum, espectro amplio de secuencia directa)/OFDM (Orthogonal Frequency Division Modulation, modulación por división de frecuencias de carácter ortogonal). En consecuencia, está diseñado para interactuar con cualquier otro producto de tipo DSSS/OFDM inalámbrico que:

- > Cumpla con el estándar IEEE802.11b/IEEE802.11g/IEEE802.11n en LAN inalámbricas, como define y aprueba el IEEE (Institute of Electrical and Electronics Engineers).
- > Tenga la certificación Wi-Fi® CERTIFIED™, tal y como la define Wi-Fi® Alliance.

Directiva

A menos que disponga de la previa aprobación expresa por escrito de THOMSON, no podrá:

- > Desensamblar, descompilar, realizar ingeniería inversa, examinar ni analizar de ninguna otra manera el equipo, su contenido, funciones, ni intentar por otros medios extraer el código fuente (ni las ideas, algoritmos, estructura u organización subyacentes) del equipo, o de alguna otra información proporcionada por THOMSON, excepto en los términos en que esta restricción sea aplicada por las leyes competentes;
- > Copiar, alquilar, ceder, revender, traspasar la licencia, ni transferir o distribuir de otra manera el equipo a terceros;
- > Modificar, adaptar ni crear trabajos derivados del equipo;
- > Retirar de ninguna de las copias del equipo la identificación del producto, el copyright u otros avisos;
- > Difundir información o análisis de rendimiento (incluidas, sin limitación, pruebas de referencia) de ninguna fuente relacionada con el equipo.

Aquellas actuaciones que no sean aprobadas expresamente por THOMSON acarrearán la pérdida de la garantía del producto y pueden invalidar la autoridad del usuario para trabajar con este equipo.

THOMSON renuncia a todo tipo de responsabilidad en caso de utilización que no se ajuste a lo expuesto en estas instrucciones.

Información medioambiental - directiva RAEE



Este símbolo indica que su aparato electrónico no operativo debe recogerse por separado y no mezclado con los residuos domésticos. La Unión Europea ha implementado un sistema de recogida y reciclado específico del que los productores son responsables.

Este aparato se ha diseñado y fabricado con materiales y componentes de alta calidad que se pueden reciclar y reutilizar.

Los aparatos eléctricos y electrónicos contienen piezas que son necesarias para que el sistema funcione correctamente pero que se pueden convertir en un peligro para la salud y el medioambiente si no se tratan o se desechan de forma correcta. Así pues, no deseche su aparato no operativo con los residuos domésticos.

Si es el propietario del aparato, debe depositarlo en el punto de recogida local apropiado o dejárselo al vendedor cuando compre un aparato nuevo.

- > Si es un usuario profesional, siga las instrucciones del proveedor.
- > Si el aparato es alquilado o se lo han dejado bajo su cuidado, póngase en contacto con el proveedor de servicios.

¡Ayúdenos a proteger el medioambiente en el que vivimos!

Instrucciones de seguridad

Condiciones climáticas

Este producto:

- > Está diseñado para un uso en escritorio, estático y en interiores; la temperatura ambiente máxima no puede ser superior a 40°C.
- > No deberá montarse en una ubicación expuesta a radiación solar o térmica directa o excesiva.
- > No deberá exponerse a condiciones de acumulación de calor ni deberá exponerse a agua o condensación.
- > Debe instalarse en un entorno con grado de contaminación 2 (un entorno libre de contaminación o bien ésta sólo es seca, no conductora).

Limpieza

Desenchufe este producto del enchufe de pared y del PC antes de proceder a su limpieza. No emplee limpiadores líquidos o en aerosol. Utilice un paño húmedo para la limpieza.

Agua y humedad

No utilice este producto cerca del agua, por ejemplo, cerca de una bañera, lavabo, fregadero de cocina, lavadero, en un suelo húmedo o cerca de una piscina. El traslado del producto de un entorno frío a otro caliente puede provocar condensación en algunas de sus partes internas. Deje que se seque antes de reiniciar el producto.

Clasificaciones de interfaz

Las interfaces externas del panel posterior del módem se clasifican de la siguiente manera:

- > Todos puertos de interfaz (p. ej. Ethernet, 10/100Base-T/MDI(-X), etc.), incluida la alimentación de baja tensión de la fuente de alimentación de CA: circuitos SELV.

Alimentación eléctrica

La alimentación eléctrica del producto debe ajustarse a las especificaciones indicadas en las etiquetas de marcado.

La fuente de alimentación debe ser de Clase II y una fuente de alimentación limitada de acuerdo con los requisitos de IEC60950-1/ EN60950-1, Cláusula 2.5 y debe estar clasificada como o como se indica en la etiqueta de la parte inferior del producto. Debe ser probada y aprobada para los estándares nacionales o locales.

para EE.UU. y Canadá: Este producto está diseñado para recibir alimentación de una unidad de alimentación de conexión directa enumerada o de escritorio con la marca "Clase 2" y la clasificación o tal y como se indica en la etiqueta de la parte inferior del producto.

Queda prohibida la utilización de otros tipos de fuente de alimentación. Si no conoce con seguridad el tipo de fuente de alimentación necesaria, consulte la documentación del usuario del producto o bien póngase en contacto con su distribuidor local del producto.

Accesibilidad

La fuente de alimentación de conexión directa o el enchufe del cable de alimentación sirven como dispositivo de desconexión. Asegúrese de que el enchufe de alimentación en el que conecta la fuente de alimentación es de fácil acceso y que se encuentra lo más cercano posible al equipo.

Sobrecarga

No sobrecargue los enchufes de alimentación eléctrica ni los cables alargadores ya que aumenta el riesgo de incendio o de descarga eléctrica.

Servicio técnico

para reducir el riesgo de descarga eléctrica, no desmonte este producto. Ninguno de los componentes internos puede ser sustituido por el usuario, por tanto no existe razón alguna para acceder al interior. La apertura o extracción de las cubiertas puede exponerle a tensiones peligrosas. Un reensamblaje incorrecto podría ocasionar una descarga eléctrica si utiliza el equipo posteriormente.

Si se requieren trabajos de servicio técnico o de reparación, lleve el producto a un representante de servicio técnico cualificado.

Daños que requieren servicio técnico

Desenchufe este producto de la toma de pared y solicite servicio técnico a personal cualificado ante estas condiciones:

- > Cuando la fuente de alimentación o su enchufe estén dañados.
- > Cuando los cables conectados estén dañados o deshilachados.
- > Si se ha derramado líquido en el producto.
- > Si el producto ha estado expuesto a la lluvia o al agua.
- > Si el producto no funciona correctamente.
- > Si el producto se ha caído o dañado de algún modo.
- > Existen signos evidentes de sobrecalentamiento.
- > Si el producto presenta un cambio notable en el rendimiento.

Desconecte inmediatamente el producto si observa que desprende un olor a quemado o humo. Bajo ninguna circunstancia debe abrir el equipo usted mismo; corre el riesgo de electrocutarse.

Información sobre regulaciones

Debe instalar y utilizar este dispositivo de estricta conformidad con las instrucciones del fabricante tal y como se describen en la documentación del usuario que se incluye con el producto.

Antes de iniciar la instalación o el uso de este producto, lea con atención el contenido de este documento para conocer las reglas o las restricciones específicas del dispositivo que se pueden aplicar en el país en que desea usar este producto.

En algunas situaciones o entornos, el uso de dispositivos inalámbricos puede estar restringido por el propietario del edificio o los representantes responsables de la organización.

Si no está seguro de la política que se aplica al uso de equipo inalámbrico en un entorno o una organización específica (p. ej. aeropuertos), debe pedir autorización para usar este dispositivo antes de encenderlo.

THOMSON no es responsable de ninguna interferencia de radio o televisión causada por una modificación no autorizada del dispositivo o por la sustitución o conexión de cables y equipos diferentes de los especificados por THOMSON. La corrección de las interferencias causadas por esa modificación, sustitución o conexión no autorizada serán responsabilidad del usuario.

THOMSON y sus distribuidores autorizados no son responsables de los daños o infracciones de las regulaciones gubernamentales que puedan derivarse del incumplimiento de estas directrices.

Europa - Unión Europea

Declaración de conformidad de la Comunidad Europea



Por la presente, THOMSON, declara que este producto cumple con los requisitos esenciales y otras disposiciones relevantes de la Directiva 1999/5/CE del Parlamento Europeo y del Consejo.

Este equipo se puede utilizar en todos los países que son miembros de la Unión Europea y de la Asociación Europea de Libre Comercio.

Puede consultar la Declaración de Conformidad en www.thomson-broadband.com.

Si este producto está equipado con un transceptor inalámbrico:

- > está restringido al uso en interiores únicamente.
- > cumple con las restricciones básicas y los límites definidos en la Recomendación del Consejo Europeo (1999/519/EC) sobre la limitación de la exposición del público general a campos electromagnéticos.

REGRAS DE SEGURANÇA E AVISOS DE REGULAMENTAÇÃO

ANTES DE INICIAR A INSTALAÇÃO OU A UTILIZAÇÃO DESTE PRODUTO, LEIA CUIDADOSAMENTE AS INSTRUÇÕES



Ao utilizar este produto, siga sempre as medidas de segurança básicas para reduzir os riscos de incêndio, choques e ferimentos em pessoas, tal como se segue:

- > Instale sempre o produto de acordo com as instruções constantes da documentação do mesmo.
- > Evite a utilização do produto durante uma tempestade eléctrica. Poderá existir um risco remoto de choque eléctrico relacionado com os relâmpagos.
- > Não utilize este produto para comunicar uma fuga de gás nas imediações da fuga.

Sem fios

Se este produto estiver equipado com um emissor-receptor sem fios, utiliza tecnologia de radiocomunicações DSSS - Direct Sequence Spread Spectrum (ampliação do espectro em sequência directa) / OFDM - Orthogonal Frequency Division Modulation (multiplexagem da divisão de frequência ortogonal). Deste modo, está concebido para interagir com qualquer outro produto de tipo DSSS/OFDM sem fios que:

- > seja compatível com a norma IEEE802.11b/IEEE802.11g/IEEE802.11n sobre redes locais sem fios, como definido e aprovado pelo Institute of Electrical and Electronics Engineers.
- > seja Wi-Fi® CERTIFIED™ como definido pela Wi-Fi® Alliance.

Directriz

A menos que tenha o consentimento explícito e prévio, por escrito, da THOMSON, não pode:

- > Desassemblar, descompilar, efectuar engenharia inversa, descobrir a origem ou analisar o equipamento, o seu conteúdo, o funcionamento ou a funcionalidade, ou, ainda, tentar recriar o código-fonte (ou as ideias subjacentes, os algoritmos, a estrutura ou a organização) a partir do equipamento, ou a partir de qualquer outra informação fornecida pela THOMSON, a menos que esta restrição seja expressamente proibida pela legislação local;
- > Copiar, alugar, emprestar, revender, efectuar sublicenças ou transferir ou distribuir o equipamento para terceiros;
- > Modificar, adaptar ou criar um trabalho derivado do equipamento;
- > Remover de quaisquer cópias do equipamento qualquer identificação do produto, copyright ou outras informações;
- > Divulgar informações relativas ao desempenho ou análise (incluindo, sem limitação, testes de referência) de qualquer origem relacionada com o equipamento.

Tais actos, não aprovados expressamente pela THOMSON, resultarão na perda de garantia do produto e poderão invalidar o direito do utilizador usar este equipamento.

A THOMSON exclui toda a responsabilidade se a utilização não respeitar as presentes instruções.

Informação ambiental – Directiva REEE



Este símbolo significa que os seus aparelhos electrónicos que já não utiliza têm de ser recolhidos à parte e não misturados com os resíduos domésticos. A União Europeia implementou um sistema de recolha selectiva e reciclagem pelo qual os produtores são responsáveis.

Este aparelho foi concebido e fabricado com materiais e componentes de elevada qualidade, que podem ser reciclados e reutilizados.

Os aparelhos eléctricos e electrónicos poderão conter peças necessárias ao bom funcionamento do sistema, mas que poderão tornar-se perigosas para a saúde e para o ambiente, se não forem manuseadas ou deitadas fora correctamente. Consequentemente, não deite o seu aparelho fora de uso juntamente com os resíduos domésticos.

Se for o proprietário do aparelho, deve deixá-lo no ponto de recolha local adequado ou entregá-lo à pessoa que lhe vender um novo aparelho.

- > Se for um utilizador profissional, siga as instruções do seu fornecedor.
- > Se o aparelho for alugado ou deixado ao seu cuidado, contacte o seu prestador de serviços.

Ajude-nos a proteger o ambiente em que vivemos!

Regras de segurança

Condições climatéricas

Este produto:

- > destina-se a utilização no posto de trabalho em casa; a temperatura ambiente máxima não pode exceder os 40°C.
- > não deve ser montado num local exposto ao calor e/ou sol directo ou excessivo.
- > não deve ser exposto a condições de retenção de calor, nem a água ou condensação.
- > deve ser instalado num ambiente de nível 2 de poluição (ambiente em que não há poluição ou em que há apenas poluição seca, não condutora).

Limpeza

Retire a ficha deste produto da tomada da parede e do computador antes de o limpar. Não use produtos de limpeza líquidos nem aerossóis. Utilize um pano humedecido para limpar.

Água e humidade

Não utilize este produto perto de água, por exemplo, próximo de banheiras, lavatórios, lava-loiças, tanques da roupa, em caves húmidas ou perto de piscinas. A passagem do produto de um ambiente frio para um quente poderá provocar condensação nalgumas das peças internas. Deixe que as peças sequem por si próprias antes de reiniciar o produto.

Classificação de interfaces

As interfaces externas no painel traseiro do produto são classificadas da seguinte forma:

- > Todas portas de interface (por exemplo: Ethernet, 10/100Base-T/MDI(-X), etc.), incluindo a potência de baixa voltagem fornecida a partir da fonte de alimentação principal do AC: circuitos SELV.

Energia eléctrica

A alimentação do produto tem de respeitar as especificações em matéria de energia indicadas nos rótulos.

A fonte de alimentação tem de ser de classe II e fonte de energia limitada, de acordo com os requisitos da norma IEC60950-1/ EN60950-1, cláusula 2.5 e de ou como indicado no rótulo, na base do produto. Tem de ser testado e aprovado em normas nacionais ou locais.

É proibida a utilização de outro tipo de fontes. Se não tiver a certeza do tipo de fonte de alimentação necessário, consulte a documentação do utilizador relativa ao produto ou contacte o seu fornecedor local.

Acessibilidade

A fonte de alimentação de ligação directa serve de dispositivo para desligar. Certifique-se de que a tomada eléctrica onde liga a fonte de alimentação é de fácil acesso e que se situa o mais próximo possível do equipamento.

Sobrecarga

Não sobrecarregue a tomada eléctrica principal nem as extensões, pois tal aumenta o risco de incêndio ou de choque eléctrico.

Manutenção

Para reduzir o risco de choques eléctricos, não desmonte este produto. Nenhuma das peças internas pode ser substituída pelo utilizador; por conseguinte, não há motivo para aceder ao interior. Abrir ou remover tampas pode expor o utilizador a voltagens perigosas. A montagem incorrecta poderá provocar choques eléctricos se o aparelho for utilizado posteriormente.

Se o produto necessitar de manutenção ou de reparação, leve-o a profissionais qualificados.

Avárias com necessidade de reparação

Desligue o produto da tomada e deixe a reparação ao cuidado de profissionais qualificados nas seguintes condições:

- > Quando a fonte de alimentação ou a respectiva tomada está avariada.
- > Quando os cabos anexados estão danificados ou gastos.
- > Se tiver sido derramado algum líquido no produto.
- > Se o produto tiver estado em contacto com chuva ou água.
- > Se o produto não funcionar normalmente.
- > Se o produto tiver caído ou tiver sido, de alguma forma, danificado.
- > Se houver sinais visíveis de sobreaquecimento.
- > Se o produto apresentar uma alteração significativa em termos de desempenho.

Desligue imediatamente o produto se lhe cheirar a queimado ou a fumo. Nunca abra o equipamento, pois corre o risco de ser electrocutado.

Informações regulamentares

Tem de instalar e utilizar este dispositivo em estrita conformidade com as instruções do fabricante, como descrito na documentação do utilizador fornecida juntamente com o produto.

Antes de iniciar a instalação ou a utilização deste produto, leia cuidadosamente o conteúdo do presente documento devido às regras ou condicionantes específicas do dispositivo que possam ser aplicadas no país em que pretende utilizar o produto.

Nalguns ambientes ou situações, a utilização de dispositivos sem fios pode ser limitada pelo proprietário do edifício ou representantes do responsável da organização.

Se não tiver a certeza da política relativa à utilização de equipamento sem fios num determinado ambiente ou organização (aerportos, por exemplo), é aconselhável pedir autorização para utilizar este dispositivo antes de ligar o equipamento.

A THOMSON não é responsável por qualquer interferência na rádio ou na televisão causada por alterações não autorizadas do dispositivo ou pelas substituição ou junção de equipamento e cabos de ligação não especificados pela THOMSON. A correcção de interferências causadas pelas referidas alterações, substituições ou junções não autorizadas será da responsabilidade do utilizador.

A THOMSON e os respectivos distribuidores e revendedores autorizados não são responsáveis por quaisquer prejuízos ou violações de regulamentações governamentais que possam resultar do incumprimento destas directrizes.

Europa – União Europeia

Comunidade Europeia – Declaração de conformidade



A THOMSON declara que este produto está em conformidade com os requisitos essenciais e outras provisões relevantes da Directiva 1999/5/CE do Parlamento Europeu e do Conselho.

Este equipamento pode ser utilizado em todos os Estados-membros da União Europeia e em todos os países membros da European Free Trade Association.

A Declaração de conformidade pode ser consultada em www.thomson-broadband.com.

Se este produto estiver equipado com um emissor-receptor sem fios:

- > destina-se apenas a utilização no interior.
- > está em conformidade com as restrições básicas e os limites definidos na Recomendação do Conselho (1999/519/EC) relativa à limitação da exposição da população aos campos electromagnéticos.

PRECAUZIONI DI SICUREZZA E INFORMAZIONI SULLA NORMATIVA

PRIMA DI INSTALLARE O UTILIZZARE QUESTO PRODOTTO, LEGGERE ATTENTAMENTE LE SEGUENTI ISTRUZIONI



Quando si utilizza questo prodotto, seguire sempre le seguenti precauzioni di sicurezza di base per ridurre il rischio di incendi, scosse elettriche e danni alle persone:

- > Installare sempre il prodotto seguendo le istruzioni fornite nella documentazione allegata.
- > Evitare di utilizzare il prodotto durante un temporale. Esiste un lieve rischio di scosse elettriche causate dai fulmini.
- > Non utilizzare questo prodotto per segnalare una fuga di gas nelle vicinanze del luogo in cui si è verificato il problema.

Wireless

Se questo prodotto è dotato di un ricetrasmittitore wireless, verrà utilizzata la tecnologia radio DSSS (Direct Sequence Spread Spectrum)/OFDM (Orthogonal Frequency Division Modulation). Il dispositivo è stato progettato per interagire con qualsiasi altro prodotto wireless di tipo DSSS/OFDM che:

- > sia conforme allo standard IEEE802.11b/IEEE802.11g/IEEE802.11n sulle reti LAN wireless definito e approvato dall'Institute of Electrical and Electronics Engineers;
- > sia Wi-Fi® CERTIFIED™, secondo quanto definito da Wi-Fi® Alliance.

Direttiva

Salvo espressamente e precedentemente approvato da THOMSON per iscritto e nei limiti previsti dalle locali normative vigenti in materia, è vietato:

- > disassemblare, decompilare, decodificare, analizzare o altrimenti esaminare l'apparecchiatura, il suo contenuto, funzionamento o funzionalità
o altrimenti tentare di individuare il codice sorgente (o le idee, gli algoritmi, la struttura o l'organizzazione di base) dall'apparecchiatura
o da ogni altra informazione fornita da THOMSON;
- > copiare, noleggiare, prestare, rivendere, concedere in sublicenza o altrimenti trasferire o distribuire l'apparecchiatura a terzi;
- > modificare, adattare o creare un prodotto derivato dell'apparecchiatura;
- > rimuovere da eventuali copie dell'apparecchiatura l'identificazione del prodotto, il copyright o altre informazioni;
- > divulgare informazioni o analisi sulle prestazioni (comprese, tra le altre, le analisi comparative) relative all'apparecchiatura provenienti da qualsiasi fonte.

Tali atti, se non approvati espressamente da THOMSON, invalideranno la garanzia sul prodotto e l'autorizzazione all'uso dell'apparecchiatura accordata all'utente.

THOMSON declina qualsiasi responsabilità in caso di utilizzo non conforme alle presenti istruzioni.

Informazioni sulla protezione ambientale - Direttiva WEEE



Questo simbolo indica che l'apparecchio elettronico non funzionante non deve essere gettato nei comuni rifiuti domestici. L'Unione Europea ha implementato uno specifico sistema di raccolta e riciclaggio del quale i produttori sono responsabili.

Questo apparecchio è stato progettato e realizzato con materiali e componenti di alta qualità che possono essere riciclati e riutilizzati.

I dispositivi elettrici ed elettronici possono contenere parti necessarie per il corretto funzionamento del sistema che possono tuttavia costituire un rischio per la salute o l'ambiente, nel caso in cui la gestione o lo smaltimento non venga eseguito correttamente. Pertanto, non gettare il dispositivo non funzionante nei rifiuti domestici.

Se si è il proprietario del dispositivo, è necessario depositarlo presso un apposito centro di raccolta o lasciarlo al fornitore al momento dell'acquisto di un nuovo apparecchio.

- > Se si è un utente professionale, seguire le istruzioni del proprio fornitore.
- > Se il dispositivo è stato noleggiato o appartiene a un'altra persona, contattare il fornitore di servizi.

Aiutaci a proteggere l'ambiente in cui viviamo.

Precauzioni di sicurezza

Condizioni ambientali

Questo prodotto:

- > È destinato all'utilizzo in ambienti chiusi con temperatura massima di 40°C.
- > Non va montato in una posizione esposta a radiazioni solari e/o fonti di calore dirette o eccessive.
- > Non deve essere esposto a condizioni di calore eccessive né entrare in contatto con acqua o condensa.
- > Deve essere installato in un ambiente con grado di inquinamento 2 (un ambiente esente da agenti inquinanti o in cui sono presenti solo agenti inquinanti secchi non conduttori).

Pulizia

Scolleghere il prodotto dalla presa a muro e dal computer prima di procedere alla pulizia. Non utilizzare detersivi liquidi o da vaporizzare. Utilizzare un panno umido per la pulizia.

Acqua e umidità

Non utilizzare il prodotto in prossimità di acqua, ad esempio vicino a una vasca, un lavandino, un lavello, in uno scantinato umido o vicino a una piscina. Il passaggio del prodotto da un ambiente freddo a uno caldo potrebbe causare la formazione di condensa su alcuni componenti interni. Lasciare asciugare il prodotto prima di riavviarlo.

Classificazioni dell'interfaccia

Le interfacce esterne del pannello posteriore del prodotto sono classificate come segue:

- > Tutte le porte di interfaccia (ad esempio, Ethernet, 10/100Base-T/MDI(-X), ecc.), compresa la potenza assorbita a bassa tensione per l'alimentatore CA: circuiti SELV.

Alimentazione

L'alimentazione del prodotto deve rispettare le specifiche indicate sulle etichette di marcatura.

L'alimentazione elettrica deve essere di classe II ed essere una fonte limitata di energia in conformità con i requisiti della normativa IEC60950-1/ EN60950-1, clausola 2.5 con potenza oppure deve corrispondere ai requisiti indicati

sull'etichetta nella parte inferiore del prodotto. L'alimentazione deve essere collaudata e approvata in conformità con gli standard nazionali o locali.

È vietato l'utilizzo di altri tipi di alimentazione elettrica. Se non si è sicuri del giusto tipo di alimentazione elettrica, consultare la documentazione per l'utente del prodotto oppure contattare il rivenditore locale.

Accessibilità

L'alimentatore a presa diretta funziona da dispositivo di scollegamento. Assicurarsi che la presa di alimentazione sia facilmente accessibile e posizionata il più vicino possibile all'apparecchiatura.

Sovraccarico

Non sovraccaricare le prese a muro e le prolunghe per non aumentare il rischio di incendio o di scossa elettrica.

Manutenzione

Per ridurre il rischio di scosse elettriche, non smontare il prodotto. Nessuna delle parti interne è sostituibile dall'utente, pertanto non vi è motivo di accedere al suo interno. L'apertura o la rimozione dei coperchi può esporre l'utente a tensioni pericolose. Un rimontaggio errato potrebbe provocare scosse elettriche durante il successivo utilizzo dell'apparecchio.

Se è necessario un intervento di manutenzione o riparazione, portare l'apparecchio in un centro di assistenza qualificato.

Danni che richiedono assistenza

Scollegare il prodotto dalla presa murale e affidare la manutenzione a personale qualificato nei casi riportati di seguito:

- > l'alimentazione o la spina sono danneggiati;
- > i cavi collegati sono danneggiati o usurati;
- > il prodotto è venuto accidentalmente a contatto con sostanze liquide;
- > il prodotto è stato esposto a pioggia o acqua;
- > il prodotto non funziona correttamente;
- > il prodotto è stato danneggiato (ad esempio cadendo);
- > si riscontra un evidente surriscaldamento;
- > il prodotto presenta un'evidente variazione delle prestazioni.

Se si avverte odore di bruciato o si nota del fumo fuoriuscire dal dispositivo, scollegarlo immediatamente. Per evitare il rischio di scosse elettriche, non è consentito in alcun caso aprire l'apparecchiatura.

Informazioni sulla normativa

È necessario installare e utilizzare questo dispositivo attenendosi scrupolosamente alle istruzioni fornite dal produttore e descritte nella documentazione allegata al prodotto.

Prima di installare e utilizzare il prodotto, leggere con attenzione il contenuto di questo documento per verificare se esistono limitazioni specifiche del dispositivo o regole applicabili nel paese in cui si intende utilizzarlo.

In determinate situazioni o in alcuni ambienti l'uso di dispositivi wireless può essere soggetto a limitazioni imposte dal proprietario dell'edificio o dai responsabili dell'organizzazione.

Se non si è certi delle regole applicate all'uso degli apparecchi wireless in una determinata organizzazione o in un dato ambiente (ad esempio, negli aeroporti), si consiglia di richiedere l'autorizzazione prima di accendere il dispositivo.

THOMSON non è responsabile delle interferenze radio o televisive causate dalla modifica non autorizzata del dispositivo oppure dalla sostituzione o dal collegamento di apparecchiature o cavi di connessione diversi da quelli indicati da THOMSON. La responsabilità della correzione di tali interferenze è dell'utente.

THOMSON e i suoi distributori o rivenditori autorizzati non possono essere ritenuti responsabili per alcun danno o violazione delle normative locali derivante dalla mancato rispetto di queste istruzioni.

Europa - Unione Europea

Dichiarazione di conformità della Comunità Europea



Con il presente documento THOMSON dichiara che questo prodotto è conforme ai requisiti essenziali e alle altre disposizioni pertinenti stabilite dalla direttiva 1999/5/CE del Consiglio e del Parlamento europeo.

La presente apparecchiatura può essere utilizzata in tutti i paesi membri dell'Unione Europea e nei paesi dell'EFTA. La Dichiarazione di conformità è reperibile all'indirizzo www.thomson-broadband.com.

Se questo prodotto è dotato di un ricetrasmittitore wireless:

- > può essere utilizzato solo in ambienti interni;
- > deve essere conforme alle restrizioni di base definite nella raccomandazione del Consiglio europeo (1999/519/CE) sulla limitazione dell'esposizione del pubblico ai campi elettromagnetici.

SÄKERHETSFÖRESKRIFTER OCH -INFORMATION

INNAN DU BÖRJAR INSTALLERA ELLER ANVÄNDA DENNA PRODUKT, SKA DU NOGGRANT LÄSA DESSA FÖRESKRIFTER



Följ alltid de grundläggande säkerhetsåtgärderna när du använder den här produkten för att förebygga risken för brand, elstöt och personskador, inklusive följande:

- > Installera alltid produkten enligt beskrivningen i dokumentationen som medföljer produkten.
- > Undvik att använda den här produkten under åskoväder. Det kan finnas en liten risk för elstötar från blixnar.
- > Använd inte den här produkten för att rapportera en gasläcka i närheten av själva gasläckan.

Trådlös LAN

Om produkten har en trådlös transceiver används radiotekniken Direct Sequence Spread Spectrum (DSSS) / Orthogonal Frequency Division Modulation (OFDM). Och är designad att ha interoperabilitet med motsvarande trådlösa produkter av DSSS/OFDM typ:

- > Uppfyller standarden IEEE 802.11b/IEEE802.11g/IEEE802.11n för trådlösa LAN-produkter, som definierats och godkänts av Institute of Electrical and Electronics Engineers (IEEE).
- > är Wi-Fi® CERTIFIED™ enligt Wi-Fi® Alliances definition.

Direktiv

Du får inte utan uttryckligt och skriftligt tillstånd från THOMSON:

- > Demontera, dekompile, efterforska, spåra eller på annat sätt analysera utrustningen, dess innehåll, förfaringssätt eller funktion, eller på annat sätt försöka härleda källkod (eller bakomliggande idéer, algoritmer, struktur eller organisation) från utrustningen, eller någon annan information som tillhandahållits av THOMSON, under förutsättning att denna begränsning inte uttryckligen är förbjuden enligt tvingande lagstiftning;
- > Kopiera, uthyra, återförsälja, upplåta i andra hand eller på annat sätt överföra eller distribuera utrustningen till tredje part;
- > Ändra, anpassa eller skapa derivat av utrustningen;
- > Avlägsna identifiering av produkten, immaterialrättsliga eller andra markeringar från utrustningen;
- > Förändra information om prestanda eller analys (inklusive men ej begränsat till referenser) från någon källa som är förknippad med utrustningen.

Dylika åtgärder, som inte uttryckligen godkänts av THOMSON, kommer att innebära förverkande av produktgaranti samt användarens rätt att använda utrustningen.

THOMSON franskriver sig allt ansvar i händelse av användning på ett sätt som inte överensstämmer med aktuella föreskrifter.

Miljöinformation (WEEE-direktiv)



Denna symbol anger att din obrukbara elektroniska apparat ska kasseras separat och inte kastas i hushållsavfallet. Därför har Europeiska unionen inrättat ett särskilt i uppsamlingsystem för vilket tillverkarna är ansvariga.

Denna apparat har utformats och tillverkats av material och komponenter av hög kvalitet som kan återvinnas och komma till användning på nytt.

De elektriska och elektroniska apparaterna kan naturligtvis innehålla element som, även om de är oombärliga för systemets funktion, kan visa sig vara farliga för hälsa och miljö om de hanteras eller kasseras på felaktigt sätt. Därför ska du inte avfallshandla din uttjänta apparat tillsammans med hushållsavfallet.

Om du själv äger apparaten ska du lämna in den på lämplig lokal uppsamlingscentral eller skicka tillbaka den till försäljaren mot att du köper en ny.

- > Om du använder apparaten yrkesmässigt hänvisas till anvisningarna från din leverantör.
- > Om du hyr den eller förvarar den ska du kontakta din tjänsteleverantör.

Hjälp till att bevara vår miljö!

Säkerhetsföreskrifter

Klimatförhållanden

Denna produkt:

- > Är avsedd för stationär användning inomhus, på en plats där temperaturen aldrig överstiger 40°C.
- > Den får inte monteras på en plats som är utsatt för direkt solljus eller annan hög värmeutstrålning.
- > Den får inte utsättas för reflekterande värme, eller fukt eller kondens.
- > Den måste installeras i en miljö som är huvudsakligen fri från föroreningar (en miljö där det inte finns några föroreningar eller endast torra, icke-ledande föroreningar).

Rengöring

Se till att produkten inte är ansluten till vägguttaget eller datorn innan rengöringen påbörjas. Använd inte flytande rengöringsmedel eller spray. Använd en fuktig trasa vid rengöring.

Vatten och fukt

Använd inte produkten i närheten av vatten, såsom vid badkar, handfat, diskbänk, tvättth, fuktig källare eller simbassäng. Förflyttning av produkten från en kall miljö till en varm kan orsaka kondens på vissa invändiga delar. Låt produkten självtorka innan den startas igen.

Gränssnittsklassificering

De externa gränssnitten på produkts bakpanel är klassificerade så här:

- > Alla gränssnittsportar (t.ex. Ethernet, 10/100Base-T/MDI(-X), m.fl.), inklusive lågspänningsingången från växelströmsadaptorn: SELV-kretsar.

Strömförsörjning

Strömförsörjningen till produkten måste följa de anviselser om strömkälla som framgår av märkningen.

Elförsörjningen måste vara av klass II och en begränsad strömkälla i enlighet med kraven i IEC60950-1-1/ EN60950-1-1, paragraf 2.5 och märkt som etiketten av produkten. Den måste vara testad och godkänd enligt nationell eller lokal standard.

Användning av någon annan sorts strömtillförsel är förbjuden. Om du är osäker på vilken elförsörjning som behövs läser du användarhandboken eller kontaktar din lokala återförsäljare.

Åtkomst

Strömadaptern fungerar som frånkopplingsenhet. Se till att det eluttag utrustningen ansluts till är lätt att komma åt och placerat så nära utrustningen som möjligt.

Överbelastning

Överbelasta inte elnätet eller förlängningssladdar, eftersom detta ökar risken för brand eller elektriska stötar.

Underhåll

Undvik risk för elektriska stötar genom att inte plocka isär produkten. Ingen av de interna komponenterna kan bytas ut av användaren; därmed finns ingen anledning till att exponera inandömet. Öppnande eller avlägsnande av lock kan utsätta personer för skadlig elektrisk spänning. Felaktig återmontering kan orsaka elektriska stötar vid påföljande användning.

Om service eller reparation behövs, bör ni kontakta en kvalificerad reparatör.

Skador som kräver service

Om något av följande inträffar bör du dra ur kontakten ur vägguttaget och kontakta kvalificerad servicepersonal:

- > Om strömadaptern eller dess kontakt är skadad.
- > Om inkopplade sladdar är skadade eller slitna.
- > Om någon vätska har spillts på utrustningen.
- > Om utrustningen har utsatts för regn eller vatten.
- > Om utrustningen inte fungerar ordentligt.
- > Om utrustningen har tappats eller skadats på något sätt.
- > Om det finns tydliga tecken på överhettning.
- > Om produkten uppvisar uppenbara förändringar i prestanda.

Koppla omedelbart bort produkten från vägguttaget om det luktar bränt eller rök. Du ska under inga omständigheter öppna utrustningen på egen hand; du löper risk för dödsfall till följd av elektrisk ström.

Information om bestämmelser

Du måste installera och använda den här utrustningen i enlighet med tillverkarens anvisningar i dokumentationen som medföljer produkten.

Innan du börjar installera eller använda denna produkt, ska du noggrant läsa innehållet i detta dokument för apparatspecifika begränsningar eller regler som kan gälla i det land du vill använda denna produkt.

I vissa situationer eller miljöer kan användningen av trådlösa enheter begränsas av fastighetsägaren eller en organisations ansvariga representanter.

Om du är osäker på vad som gäller för användning av trådlös utrustning inom specifika organisationer eller i särskilda miljöer (t.ex. flygplatser) uppmanas du att fråga om lov innan du slår på utrustningen.

THOMSON är inte ansvarig för radio- eller televisionsstörning som orsakas av obehörig ändring av enheten, eller av att du bytt ut eller kopplat in anslutningskablar och utrustning, annat än vad som specificerats av THOMSON. Korrigerig av störningen som orsakats av obehörig ändring, obehörigt utbyte eller tillägg är användarens ansvar. THOMSON och dennes auktoriserade återförsäljare eller leverantörer kan inte hållas ansvariga för skada eller överträdelse av statliga bestämmelser, som kan uppstå om dessa riktlinjer inte följs.

Konformitetsdeklaration avseende EU



Härmed intygar THOMSON att denna produkt står i överensstämmelse med de väsentliga egenskapskrav och övriga relevanta bestämmelser som framgår av Europaparlamentets och Rådets direktiv 1999/5/EG.

Denna utrustning kan användas inom alla länder som är medlemmar i den Europeiska Unionen och alla länder som är medlemmar i den europeiska frihandelsorganisation.

Konformitetsdeklarationen finns på www.thomson-broadband.com.

Om produkten har en IEEE 802.11b/IEEE802.11g/IEEE802.11n trådlös mottagare:

- > Är den avsedd att endast användas i inomhus miljö
- > De uppfyller direktiven i Council Recommendation (1999/519/EC).

VEILIGHEIDSVOORSCHRIFTEN EN REGELGEVINGSINFORMATIE

LEES DEZE AANWIJZINGEN ZORGVULDIG DOOR VOORDAT U DIT PRODUCT GAAT INSTALLEREN OF GEBRUIKEN



Om het risico van brand, elektrische schokken en lichamelijk letsel tot een minimum te beperken, dient u bij het installeren van dit product altijd de elementaire voorzorgsmaatregelen te treffen, waaronder:

- > Installeer het product altijd zoals beschreven in de documentatie die bij het product wordt geleverd.
- > Gebruik dit product niet tijdens onweer vanwege een klein risico op elektrocutie door blikseminslag.
- > Gebruik dit product niet om een gaslek te melden wanneer u zich in de nabijheid van het lek bevindt.

Draadloos

Als dit product is uitgerust met een draadloze zender-ontvanger, werkt het op basis van Direct Sequence Spread Spectrum (DSSS) /Orthogonal Frequency Division Modulation (OFDM). Het product is zodanig ontworpen dat het kan samenwerken met een andere draadloos product van het type DSSS/OFDM dat aan de volgende voorwaarden voldoet:

- > Voldoet aan de norm IEEE802.11b/IEEE802.11g/IEEE802.11n voor draadloze LAN's, zoals gedefinieerd en goedgekeurd door het IEEE (Institute of Electrical and Electronics Engineers).
- > Is Wi-Fi® CERTIFIED™ zoals gedefinieerd door de Wi-Fi® Alliance.

Instructie

Tenzij u beschikt over expliciete, voorafgaande, schriftelijke toestemming van THOMSON is het volgende verboden:

- > Dit product disassembleren, decompileren, onderwerpen aan reverse-engineering, kopiëren of op andere wijze de apparatuur, de inhoud, werking of functionaliteit analyseren, of anderszins proberen de broncode af te leiden (of de onderliggende ideeën, algoritmen, structuur of organisatie) van de apparatuur of andere informatie die door THOMSON wordt verschaft, behalve wanneer deze beperking uitdrukkelijk is verboden door het lokale recht;
- > dit product kopiëren, huren, lenen, opnieuw verkopen, een sublicentie verlenen voor deze apparatuur, of op andere wijze de apparatuur aan anderen overdragen of verspreiden;
- > dit product wijzigen, aanpassen of van dit product afgeleide apparatuur maken;
- > de productidentificatie, het copyright of andere bepalingen van kopieën van deze apparatuur verwijderen;
- > informatie verspreiden over de werking van de apparatuur of analysegegevens (inclusief, zonder beperking, vergelijkende testen) van iedere bron die met de apparatuur verbonden is.

Dergelijke handelingen die niet uitdrukkelijk zijn goedgekeurd door THOMSON leiden tot verlies van de garantie en kunnen het recht van de gebruiker om deze apparatuur te gebruiken ongeldig maken.

THOMSON wijst alle aansprakelijkheid af als het gebruik niet beantwoordt aan deze voorschriften.

Informatie inzake milieuzorg – AEEA-richtlijn



Dit symbool betekent dat uw niet-functionerende elektronische apparaat gescheiden van het huishoudelijk afval moet worden aangeboden. De Europese Unie heeft een specifiek systeem voor inzamelen en hergebruik opgezet waarvoor producenten verantwoordelijk zijn.

Dit apparaat is ontworpen en gefabriceerd met hoogwaardige materialen en onderdelen die kunnen worden gerecycled voor hergebruik.

Elektrische en elektronische apparaten kunnen onderdelen bevatten die noodzakelijk zijn voor een juiste werking van het systeem, maar die de gezondheid en het milieu kunnen bedreigen als ze niet op de juiste manier worden verwerkt of afgevoerd. Daarom wordt u verzocht uw niet-functionerende apparaat niet samen met uw huishoudelijk afval af te voeren.

Als u de eigenaar van het apparaat bent, moet u het inleveren bij uw lokale inzamelpunt of achterlaten bij de leverancier wanneer u een nieuw apparaat aanschaft.

- > Als u een professioneel gebruiker bent, wordt u verzocht de aanwijzingen van uw leverancier te volgen.
- > Als het apparaat aan u is verhuurd of aan uw zorg is toevertrouwd, wordt u verzocht contact op te nemen met uw serviceprovider.

Help ons mee het milieu te beschermen!

Veiligheidsvoorschriften

Klimaatomstandigheden

Dit product:

- > Is bedoeld voor gebruik binnenshuis op een vaste plaats; de omgevingstemperatuur mag niet hoger zijn dan 40°C (104°F).
- > Mag niet worden geïnstalleerd op een plaats waar deze onderhevig is aan direct of overmatig zonlicht en/of hitte-uitstraling.
- > Mag niet worden blootgesteld aan condities waarbij de warmte niet kan ontsnappen of aan water of condensatie.
- > Mag niet worden blootgesteld aan overmatige milieuverontreiniging. (De apparatuur moet worden geplaatst in een omgeving waar geen verontreiniging of alleen droge, niet-geleidende verontreiniging is).

Schoonmaken

Haal het netsnoer van het apparaat uit het stopcontact en de computer voordat u het apparaat schoonmaakt. Gebruik geen vloeibare schoonmaakmiddelen of spuitbussen. Gebruik een vochtige doek.

Water en vocht

Gebruik dit product niet in de buurt van water, bijvoorbeeld een bad, wastafel, aanrecht, wasbak, in een natte kelder of bij een zwembad. Als u het product van een koude naar een warme omgeving verplaatst, kan condensatie worden gevormd op bepaalde interne onderdelen. Laat het product drogen voordat u het opnieuw inschakelt.

Classificaties van connectoren

De externe connectoren aan de achterkant van het product hebben de volgende classificatie:

- > Alle interfacepoorten (zoals Ethernet, 10/100Base-T/MDI(-X),), inclusief de laagspanningsingang van de netvoeding: SELV-circuits.

Stroomvoorziening

De stroomvoorziening van het product moet overeenkomen met de specificaties op de labels.

De netvoeding moet beantwoorden aan Klasse II en de Limited Power Source-normen, conform de voorschriften van IEC60950-1/ EN60950-1, Artikel 2.5, met een nominale voeding van of zoals vermeld op het label aan de onderkant van het product. De voeding moet zijn getest en goedgekeurd conform nationale of lokale normen.

Het gebruik van andere typen voedingen is niet toegestaan. Als u niet zeker weet welk type voeding u moet gebruiken, raadpleeg u de gebruikersdocumentatie bij het product of neemt u contact op met uw lokale dealer.

Toegankelijkheid

De Direct Plug-in netvoeding wordt gebruikt als verbrekkingsapparaat. Sluit de voeding aan op een stopcontact dat goed toegankelijk is en zich in de buurt van de apparatuur bevindt.

Overbelasten

Stopcontacten en verlengsnoeren mogen niet overbelast worden omdat dit het risico op brand of elektrische schok verhoogt.

Onderhoud

U vermindert het risico op een elektrische schok door het product niet zelf te demonteren. De interne onderdelen kunnen niet door de gebruiker worden vervangen; het is daarom niet nodig om het apparaat te openen. U kunt worden blootgesteld aan gevaarlijke spanningsniveaus door het apparaat te openen of de behuizing te verwijderen. Als het apparaat op onjuiste wijze opnieuw wordt gemonteerd, kan het gebruik een elektrische schok veroorzaken. Neem contact op met een erkende onderhoudstechnicus voor onderhoud of reparatie van de apparatuur.

Schade waarvoor een onderhoudstechnicus is vereist

Onder de volgende omstandigheden haalt u het netsnoer uit het stopcontact en neemt u contact op met een erkende onderhoudstechnicus:

- > Als de voeding of de stekker beschadigd is.
- > Als de netsnoeren beschadigd of gerafeld zijn.
- > Als vloeistof in het apparaat is gesijpeld.
- > Als het apparaat is blootgesteld aan regen of water.
- > Als het apparaat niet normaal functioneert.
- > Als het apparaat is gevallen of is beschadigd.
- > Als er duidelijke tekenen van oververhitting zijn.
- > Als de werking van het apparaat duidelijk is gewijzigd.

Koppel het apparaat onmiddellijk los als het een brandgeur verspreidt of rookt. U mag het apparaat in geen geval zelf openen vanwege het risico op elektrocutie.

Reglementaire informatie

U dient dit apparaat te installeren en te gebruiken volgens de voorschriften van de fabrikant zoals beschreven in de gebruikersdocumentatie die bij het product werd geleverd.

Voordat u dit product gaat installeren of gebruiken, dient u de inhoud van dit document zorgvuldig door te nemen op apparaatspecifieke beperkingen of regels die kunnen gelden voor het land waar u dit product wilt gebruiken.

In sommige situaties of omgevingen kan het gebruik van draadloze apparatuur worden beperkt door de eigenaar van het gebouw of verantwoordelijke vertegenwoordigers van de organisatie.

Als u niet volledig bekend bent met het beleid dat van toepassing is op het gebruik van draadloze apparatuur in een specifieke organisatie of omgeving (zoals luchthavens), wordt u sterk aangeraden om toestemming voor gebruik van dit apparaat te vragen voordat u het apparaat inschakelt.

THOMSON is niet verantwoordelijk voor enige radio- of tv-storing als gevolg van ongeoorloofde wijzigingen aan het apparaat of van het vervangen of aanbrengen van verbindingskabels en apparatuur anders dan aangegeven door THOMSON. Het corrigeren van storing als gevolg van dergelijke ongeoorloofde wijzigingen, vervangingen of toevoegingen is voor verantwoordelijkheid van de gebruiker.

THOMSON en diens gemachtigde wederverkopers of distributeurs zijn niet aansprakelijk voor enige schade of schending van overheidsregels die kunnen voortkomen uit het niet naleven van deze richtlijnen.

Europa - Europese Unie

Conformiteitsverklaring van de Europese Gemeenschap



THOMSON verklaart hierbij dat dit product voldoet aan de essentiële vereisten en andere relevante bepalingen in de richtlijn 1999/5/EG betreffende radio- en telecommunicatieapparatuur van het Europese Parlement en van de Europese Raad.

Deze apparatuur kan worden gebruikt in alle landen die lid zijn van de Europese Unie en van de Europese Vrijhandelsassociatie.

De complete conformiteitsverklaring vindt u op www.thomson-broadband.com.

Als dit product is uitgerust met een draadloze zender-ontvanger:

- > mag het uitsluitend binnenshuis worden gebruikt.
- > voldoet het aan de elementaire beperkingen en limieten zoals gedefinieerd in de Aanbeveling van de Raad (1999/519/EG) omtrent de beperking van blootstelling van het publiek aan elektromagnetische velden.

THOMSON Telecom Belgium

Prins Boudewijnlaan 47

www.thomson-broadband.com

© 2008 Thomson. All rights reserved.
E-DOC-SAF-20080707-0003 v1.0. Printed in PRC.



DSL36581360



PAP