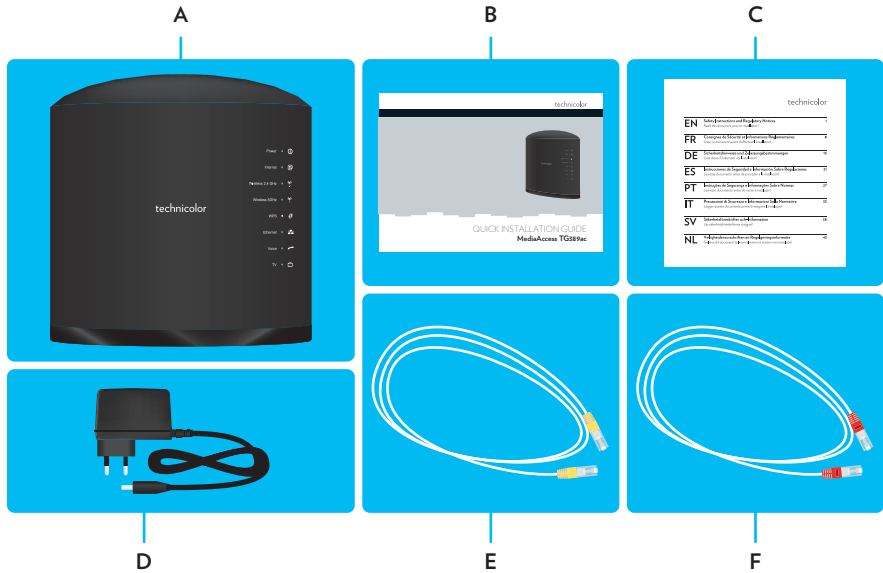


## 1. Before you start

Carefully read the **Safety Instructions and Regulatory Notices** booklet included in the box before continuing with the installation of the MediaAccess Gateway.

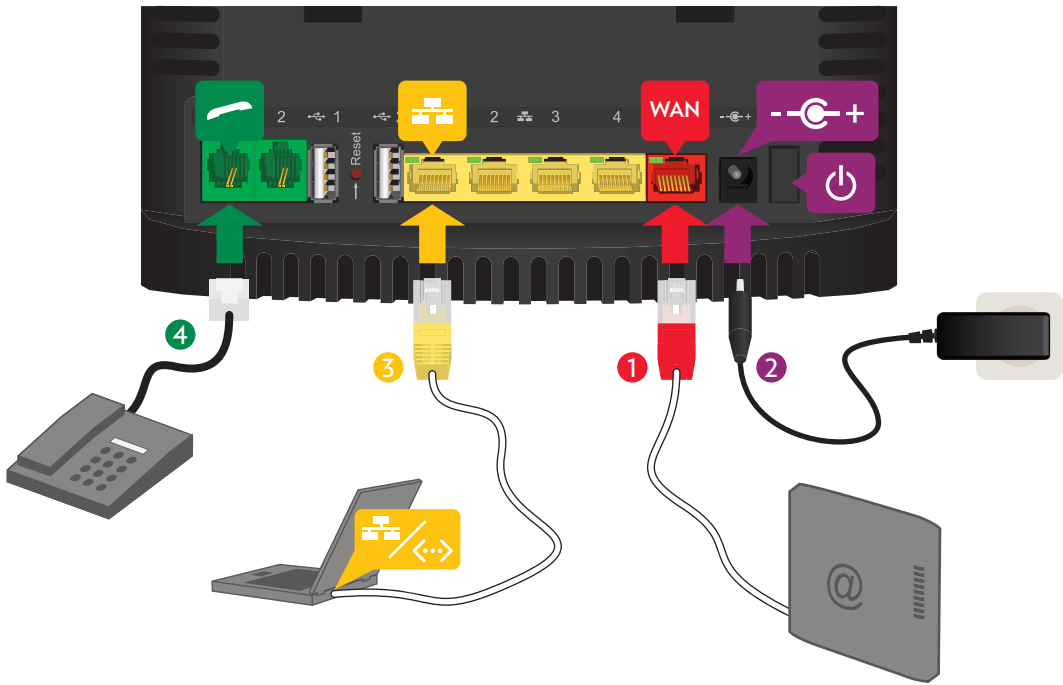
## 2. Check the content of your box



Your box contains the following items:

Item	Description
A	One MediaAccess TG389ac. In this document we will refer to it as MediaAccess Gateway.
B	This Quick Installation Guide.
C	One Safety Instructions and Regulatory Information booklet.
D	One power adapter.
E	One Ethernet cable with yellow connectors.
F	One Ethernet cable with red connectors.

### 3. Install your MediaAccess Gateway



#### 1 Connect the MediaAccess Gateway to your Internet Access Device (IAD)

- 1 Take the Ethernet cable with the red connectors.
- 2 Connect one end of the Ethernet cable to the red port (**WAN**) on your MediaAccess Gateway.
- 3 Connect the other end of the Ethernet cable to your Internet access device (for example, an optical network terminal, a DSL/cable modem, etc.).

#### 2 Power on the MediaAccess Gateway

- 1 Plug the connector of the electric power supply adapter into the MediaAccess Gateway power inlet port.
- 2 Plug the adapter into a nearby power outlet.
- 3 Press the power button (⏻) on the back panel. After a few minutes:
  - ▶ The **Power** LED on the front panel must be solid green.  
If this is not the case, check the connections that you made in the previous steps.  
! If the **Power** LED is blinking green or orange, the MediaAccess Gateway is updating its software. If this is the case, wait until the **Power** LED becomes solid green. This can take several minutes! Do not power off your device or unplug any cables!
  - ▶ The **Internet** LED on the front panel must be solid green.  
If this is not the case, check the connections that you made in “Connect the to the Internet” or contact your service provider (if the broadband service is not enabled yet).

### 3 Connect your wired (Ethernet) devices to the MediaAccess Gateway

If you want to connect a device using a wired (Ethernet) connection:

- 1 Take the Ethernet cable with the yellow connectors.
- 2 Connect one end of the Ethernet cable to one of the yellow Ethernet ports on your MediaAccess Gateway.
- 3 Connect the other end of the Ethernet cable to your device.

### 4 Connect your telephones to the MediaAccess Gateway

Connect your corded phone, DECT base station or fax to one of the green ports (📞).

## 4. Connect your wireless devices to the MediaAccess Gateway

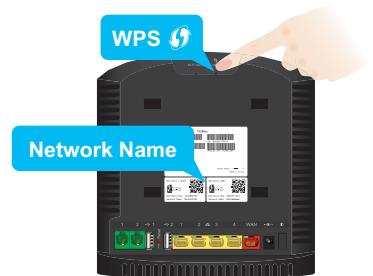
The MediaAccess Gateway has two wireless access points:

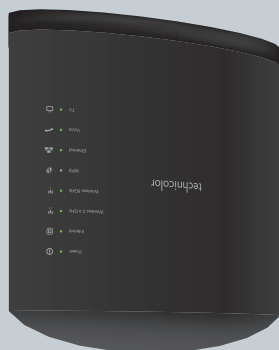
- The **5 GHz access point** offers superior transfer rates, is less sensitive to interference and allows you to connect IEEE802.11a/n/ac wireless clients.
- The **2.4 GHz access point** allows you to connect IEEE802.11b/g/n wireless clients. Use this access point for wireless clients that don't support 5 GHz.

You can connect to an access point:

- Automatically using WPS:
  - a Start WPS Push Button Configuration (PBC) on your wireless device.
  - b If your wireless device prompts you to select your access point from a list, select the item that uses the **Network Name** printed on the back label of your MediaAccess Gateway.
  - c Shortly press the **WPS** 🔄 button on the back panel of the MediaAccess Gateway.
  - d The **WPS** 🔄 LED on the front panel starts blinking orange.
  - e After maximum two minutes, the **WPS** 🔄 LED will be in either of the following states:
    - Solid green: the registration was successful.
    - Blinking red: the MediaAccess Gateway could not find your wireless device. Try again or connect your wireless devices manually.
- Manually:

Configure your wireless device with the **Network Name** and **Wireless Key** printed on the back label of your MediaAccess Gateway.





technicolor

## 5. Configure your MediaAccess Gateway from your browser (optional)

Your setup is now complete. Optionally, you can make changes to the MediaAccess Gateway settings (for example, change the wireless settings). Proceed as follows:

- 1 Browse to <http://192.168.1.1>. The MediaAccess Gateway GUI appears.
- 2 In the upper-right corner, click **Sign In**. Type **admin** in both text boxes and click **Sign In**. The MediaAccess Gateway verifies your account and reloads the page.
- 3 You can now change the settings to your needs.



PAP



DSL37325620

TECHNICOLOR  
1-5, rue Jeanne d'Arc  
92130 Issy-les-Moulineaux  
France

[www.technicolor.com](http://www.technicolor.com)

technicolor



Copyright 2014 Technicolor. All rights reserved.  
All tradenames referenced are service marks,  
trademarks, or registered trademarks of their  
respective companies. Specifications subject to  
change without notice.  
DMS3-QIG-25-79 v1.0.