



THOMSON TG789vn

Wireless-n Multi-Service VoIP Ethernet WAN & VDSL2 Gateway



Setup and User Guide

THOMSON TG789vn

Setup and User Guide

Copyright

Copyright ©1999-2010 THOMSON. All rights reserved.

Distribution and copying of this document, use and communication of its contents is not permitted without written authorization from THOMSON. The content of this document is furnished for informational use only, may be subject to change without notice, and should not be construed as a commitment by THOMSON. THOMSON assumes no responsibility or liability for any errors or inaccuracies that may appear in this document.

THOMSON Telecom Belgium NV
Prins Boudewijnlaan, 47
2650 Edegem
Belgium

<http://www.thomson.net>

Trademarks

The following trademarks may be used in this document:

- DECT™ is a trademark of ETSI.
- Bluetooth® word mark and logos are owned by the Bluetooth SIG, Inc.
- Ethernet™ is a trademark of Xerox Corporation.
- Wi-Fi®, WMM® and the Wi-Fi logo are registered trademarks of the Wi-Fi Alliance®. Wi-Fi CERTIFIED, Wi-Fi ZONE, Wi-Fi Protected Access, Wi-Fi Multimedia, Wi-Fi Protected Setup, WPA, WPA2 and their respective logos are trademarks of the Wi-Fi Alliance®.
- UPnP™ is a certification mark of the UPnP™ Implementers Corporation.
- DLNA® is a registered trademark, DLNA disc logo is a service mark, and DLNA Certified is a trademark of the Digital Living Network Alliance. Digital Living Network Alliance is a service mark of the Digital Living Network Alliance.
- Microsoft®, MS-DOS®, Windows®, Windows NT® and Windows Vista® are either registered trademarks or trademarks of Microsoft Corporation in the United States and/or other countries.
- Apple® and Mac OS® are registered trademarks of Apple Computer, Incorporated, registered in the United States and other countries.
- UNIX® is a registered trademark of UNIX System Laboratories, Incorporated.
- Adobe®, the Adobe logo, Acrobat and Acrobat Reader are trademarks or registered trademarks of Adobe Systems, Incorporated, registered in the United States and/or other countries.

Other brands and product names may be trademarks or registered trademarks of their respective holders. All other logos, trademarks and service marks are the property of their respective owners, where marked or not.

Document Information

Status: v1.0 (April 2010)

Reference: E-DOC-CTC-20080527-0012

Short Title: Setup & User Guide TG789vn R8.4.x (en)

About this Setup and User Guide	1
1 Installation.....	3
1.1 Before you start	4
1.1.1 DSL Requirements.....	5
1.1.2 Connection Requirements	7
1.2 Installing your Thomson Gateway	8
1.2.1 Guided Installation	9
1.2.2 Manual Installation.....	11
1.3 Adding a New Computer to your Network	13
1.4 Connecting a Computer Using the Ethernet Cable	14
2 Thomson Gateway Basics	15
2.1 Thomson Gateway LED Behaviour	16
2.1.1 Status LEDs	17
2.1.2 WPS Button LED	20
2.1.3 Ethernet LEDs	21
2.2 Thomson Gateway GUI	22
2.3 Backing Up/Restoring your Configuration	25
3 Wireless Access	27
3.1 Connecting Your Wireless Client via WPS	28
3.2 Connecting Your Wireless Client without WPS	30
3.3 Securing Your Wireless Connection.....	31
3.3.1 Configuring WPA-PSK Encryption	32
3.3.2 Configuring WEP Encryption.....	33
4 Telephony.....	35
4.1 Setting Up Your Telephone Network.....	36
4.1.1 Connection to the Traditional Telephone Network.....	37
4.1.2 Configuring the Thomson Gateway VoIP Settings.....	38
4.2 Address Book.....	41

Contents

4.3	Telephony Services	42
4.3.1	Services supported by Your Service Provider	43
4.3.2	Activating a Telephony Service on your Thomson Gateway	44
4.3.3	Using Telephony Services	45
4.4	Viewing Telephony Statistics	48
5	Saving Energy with Your Thomson Gateway	49
6	Sharing Content on your Thomson Gateway	51
6.1	Using the Network File Server	52
6.2	Using the UPnP AV Media Server	55
6.3	Using the FTP Server	56
6.4	Managing your Shared Content	58
6.5	Safely Removing your USB Storage Device	60
7	Thomson Gateway Tools	61
7.1	UPnP	62
7.1.1	Accessing Your Thomson Gateway with UPnP	63
7.1.2	Managing your Internet connection with UPnP	64
7.1.3	Configuring UPnP on the Thomson Gateway	65
7.1.4	Installing UPnP on Windows XP	66
7.2	Assigning a service (HTTP, FTP,...) to a Computer	68
7.3	Dynamic DNS	70
8	Internet Security	71
8.1	Firewall	72
8.2	Parental Control	73
8.2.1	Configuring The Content-based Filter	75
8.2.2	Adding Rules for the Address-Based Filter	76
9	Troubleshooting	79
9.1	Setup Troubleshooting	80
9.2	General Thomson Gateway Troubleshooting	81
9.3	Wired Connection Troubleshooting	82

9.4	Wireless Connection Troubleshooting	83
9.5	Voice over IP Troubleshooting.....	84
9.6	Reset to Factory Defaults	85

Contents

About this Setup and User Guide

Used Symbols



A **note** provides additional information about a topic.



A **caution** warns you about potential problems or specific precautions that need to be taken.

Terminology

Generally, the **THOMSON TG789vn** will be referred to as **Thomson Gateway** in this Setup and User Guide.

Typographical Conventions

Following typographical convention is used throughout this manual:

- **Sample text** indicates a hyperlink to a Web site.
Example: For more information, visit us at www.thomson.net.
- **Sample text** indicates an internal cross-reference.
Example: If you want to know more about guide, see “1 Introduction” on page 7”.
- **Sample text** indicates an important content-related word.
Example: To enter the network, you **must** authenticate yourself.
- **Sample text** indicates a GUI element (commands on menus and buttons, dialog box elements, file names, paths and folders).
Example: On the **File** menu, click **Open** to open a file.

Documentation and software updates

THOMSON continuously develops new solutions, but is also committed to improving its existing products. For more information on THOMSON's latest technological innovations, documents and software releases, visit us at www.thomson.net.

About this Setup and User Guide

1 Installation

Introduction

In a few minutes you will be able to access the Internet using your Thomson Gateway.

This Setup and User Guide will show you how to set up your Thomson Gateway and how to connect your computer(s) to the Internet.

Main features

As soon as you have completed the installation of your Thomson Gateway you will be able to benefit from all the services offered by your Thomson Gateway. This Setup and User Guide will focus on the following features:

- **Broadband Internet** connection.
The first chapter describes how to connect your Thomson Gateway to the Internet.
- **Wired and wireless access** to your local network devices.
For more information, see "1.4 Connecting a Computer Using the Ethernet Cable" on page 14 and "3 Wireless Access" on page 27.
- **Voice over IP (VoIP)** connectivity for traditional phones and IP phones.
For more information see "4 Telephony" on page 35
- **Share your media** with media players and other network devices using the built-in File Server, FTP Server and UPnP AV Server. For more information, see "6 Sharing Content on your Thomson Gateway" on page 51.
- **Useful networking tools** like UPnP, Dynamic DNS and many more.
For more information, see "7 Thomson Gateway Tools" on page 61.
- **Internet Security:**
For more information, see "8 Internet Security" on page 71.

Before you can start to use these features, we will first set up your Thomson Gateway.

1 Installation

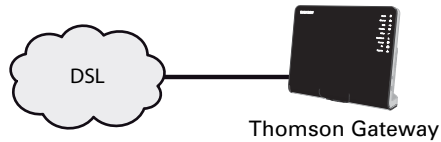
1.1 Before you start

User-specific requirements

You can use your Thomson Gateway as:

- **DSL Gateway:**

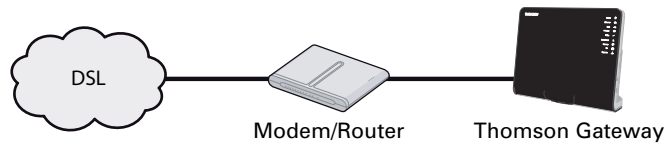
The Thomson Gateway is connected to the DSL network of your service provider and brings the Internet to your home.



To use the Thomson Gateway in this setup, make sure that the requirements in "1.1.1 DSL Requirements" on page 5 are met.

- **Home Router:**

The Thomson Gateway is placed behind your another gateway or modem.



This setup has no special requirements attached to it.

1.1.1 DSL Requirements

Applicability

This section is only applicable if you are using your Thomson Gateway as DSL gateway. For more information, see “User-specific requirements” on page 4.

DSL Service

The DSL service must be activated on your telephone line by your service provider.

Decoupling the voice and DSL signal

As soon as the DSL service is activated two kinds of signals will be available on your telephone line:

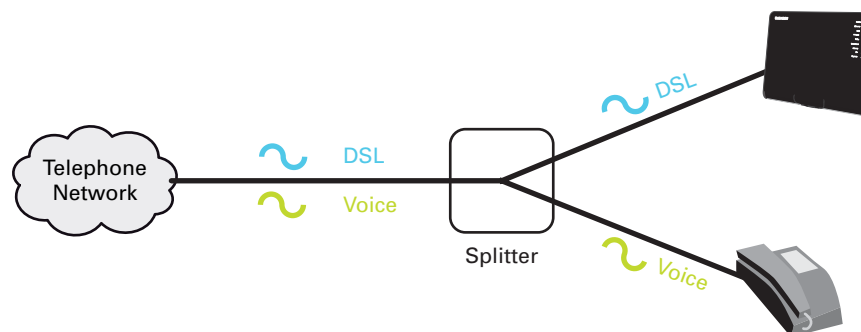
- Voice signals
- DSL signals

To ensure the sound quality of your phone calls, the DSL signal must be omitted from the telephone line before it reaches your phone, otherwise you might hear a noise in the background when using your phone.

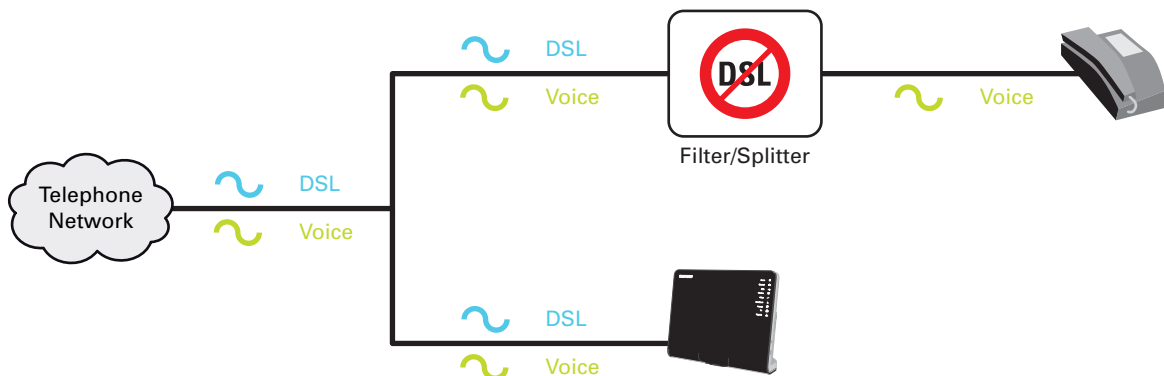
Filters and splitters

To split the DSL signal from the telephone line, you can use one of the following solutions:

- A **splitter** that splits the telephone signal into a DSL and Voice signal.



- A **filter** between your telephone outlet and your phone. This filter removes the DSL signal and passes the Voice signal.



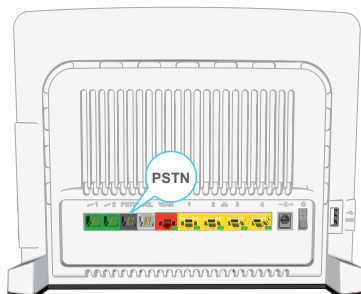
This filter may also be integrated in your Thomson Gateway.

1 Installation

How do I know if my Thomson Gateway has an integrated filter?

Thomson Gateways:

- With an integrated filter have **no PSTN** port on their back panel.
- Without integrated filter have a **PSTN** port on their back panel.



Here you will have to put a filters/splitter between the telephone outlet and your Thomson Gateway.

1.1.2 Connection Requirements

Wireless connection

If you want to connect your computer using a wireless connection, you will need a WiFi-certified wireless client adapter for each computer you want to connect wirelessly.

Wired connection

If you want to connect one or more computer using a wired connection, make sure those computers are equipped with an Ethernet Network Interface Card (NIC).

Internet connection

You may need the following connection details from your service provider:

- Your service provider's method for connecting to the Internet (for example PPPoE)
- The VPI/VCI (for example 8/35)
- Your user name and password to connect to the Internet for PPP connections
- Your IP settings in case of static configurations



Optionally your service provider may indicate the service profile to use during the setup.

You may have received this information when you subscribed at your Internet Service Provider. You may be prompted for this information at a given step in the installation procedure.

1 Installation

1.2 Installing your Thomson Gateway

Warning

Do not plug in any cables or connect any devices until you are instructed to do so.

Installation methods

There two ways to set up your Thomson Gateway:

- **Guided Installation**
The Setup wizard included on the Setup CD will guide you through all configuration aspects of your Thomson Gateway. This is the recommended way to install your Thomson Gateway.
- **Manual Installation**
The Setup and User Guide will first help you to connect your computer to the Thomson Gateway. After this is done, you can configure your Thomson Gateway using your web browser.

1.2.1 Guided Installation

Requirements

- Your computer must run one of the following operating systems:
 - ▶ Microsoft Windows 7 or higher
 - ▶ Microsoft Windows 7 x64 or higher
 - ▶ Microsoft Windows Vista (SP1) or higher
 - ▶ Microsoft Windows Vista x64 (SP1) or higher
 - ▶ Microsoft Windows XP SP2 or higher
 - ▶ Microsoft Windows XP x64 SP1 or higher
 - ▶ Microsoft Windows 2000 SP4
 - ▶ Mac OS X 10.4 (Tiger)
 - ▶ Mac OS X 10.5 (Leopard)

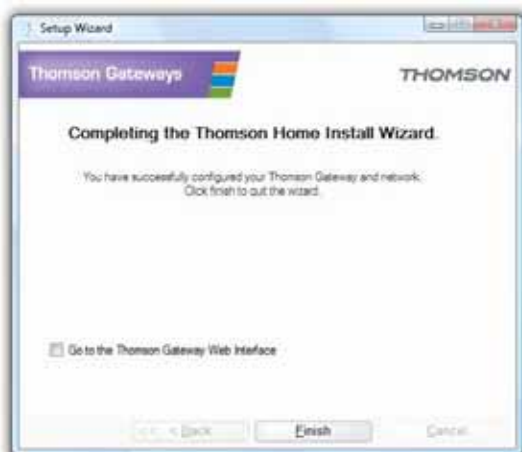
If you are using another operating system, use the Manual Installation.

- You must have administrative rights on your computer

Starting the wizard

To start the wizard:

- 1 Insert the Setup CD into your computer's CD- or DVD-ROM drive.
- 2 If your computer runs:
 - ▶ Microsoft Windows: The CD should autostart.
If the CD does not autostart, see "The Setup CD does not start automatically" on page 80.
 - ▶ Mac OS X: Double-click **Menu** in the window with the content of the CD.
- 3 Select the language of your choice and click **OK**.
- 4 The Setup wizard will now guide you through the installation of your Thomson Gateway.
- 5 At the end of the installation, the following screen appears:



- 6 Select **Go to the Thomson Gateway Web Interface** if you want to go to the Thomson Gateway GUI after closing the wizard. On the Thomson Gateway GUI, you can configure all services of your Thomson Gateway.
- 7 Click **Finish**.
- 8 The **CD menu** appears.

1 Installation

CD menu



On the **CD Menu**, you can click:

- **Initial Setup** to connect your computer to the Thomson Gateway and configure it.
- **Reconfigure my Thomson Gateway** to fully reconfigure your Thomson Gateway.



If you reconfigure your Thomson Gateway via the **CD menu**, the Thomson Gateway will be reconfigured from scratch. All your current settings will be lost. If you only want to make small changes to your configuration (e.g. changing the security), we recommended you to do this via the Thomson Gateway GUI. For more information, see “2.2 Thomson Gateway GUI” on page 22.

- **Setup my computer** to connect your computer to the Thomson Gateway network.
- **View Documentation** to view a list of the documentation that is available for your Thomson Gateway. This list will be automatically updated if you are connected to the Internet.
- **Visit thomson.net** to visit the online support sections.



Actual available items may depend on the Setup CD delivered with your Thomson Gateway.

In case of problems

If you encounter problems during this installation please refer to “9.1 Setup Troubleshooting” on page 80.

1.2.2 Manual Installation

Requirements

JavaScript must be enabled (this is the default setting) on your browser. For more information, consult the help of your web browser.

Procedure

Proceed as follows:

- 1 Connect the Thomson Gateway to your broadband service.
- 2 Power on the Thomson Gateway.
- 3 Connect your computer to the Thomson Gateway.
- 4 Configure the Thomson Gateway.

This is described in the sections below.

Connect the Thomson Gateway to your broadband service

As described in “User-specific requirements” on page 4, you can use your Thomson Gateway in either of the following scenarios:

- DSL Gateway
- Home Router

When setting up Thomson Gateway as DSL Gateway

Proceed as follows:

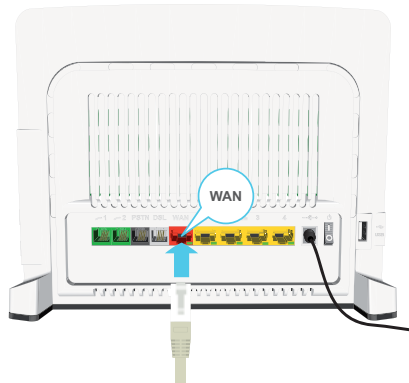
- 1 Take the DSL cable with the grey connectors. This cable is included in your box.
- 2 Plug one end of the cable in the grey DSL port on the back of your Thomson Gateway.
- 3 If you are:
 - ▶ Using a splitter, plug the other end of the cable into the Modem/ADSL out put of your splitter.
 - ▶ **Not** using a splitter, plug the other end of the cable directly in the wall outlet.

For more information about splitters, see “Filters and splitters” on page 5.

When setting up Thomson Gateway as Home Router

Proceed as follows:

- 1 Take an Ethernet cable.
- 2 Plug one end of the cable in the **red** WAN port on the back of your Thomson Gateway.



1 Installation

- 3 Plug the other end into the Ethernet port of your Internet gateway/modem.



The **WAN** port can only be used to connect your Thomson Gateway to an Internet gateway/modem. You can not use it to connect your computer to the Thomson Gateway.

Power on the Thomson Gateway

Proceed as follows:

- 1 Connect the power cord to the Thomson Gateway's power port.
- 2 Plug the other end into an electrical outlet.
- 3 Push the power button to turn on the Thomson Gateway.
- 4 Wait two minutes to allow the Thomson Gateway to complete the start up phase.

Connect your computer to the Thomson Gateway

Setting up a wireless connections

For more information on how to setup a wireless connection to your Thomson Gateway, see "3 Wireless Access" on page 27.

Setting up a wired connection

For more information on how to setup a wired connection (i.e. an Ethernet connection) to your Thomson Gateway, see "1.4 Connecting a Computer Using the Ethernet Cable" on page 14.

Configure the Thomson Gateway

Proceed as follows:

- 1 Open your web browser.
- 2 The Thomson Gateway informs you that you have not yet configured your Thomson Gateway.



If this window does not appear browse to <http://dsldevice.lan> or to the IP address of your Thomson Gateway (by default: 192.168.1.254) and click **Thomson Gateway** on the menu on the left-hand side.

- 3 Click **Setup my Thomson Gateway**.
- 4 The **Easy Setup** wizard appears. This wizard will guide you through the configuration of your Thomson Gateway. Click **Next** and follow the instructions.

1.3 Adding a New Computer to your Network

Guided Installation

If you configured your Thomson Gateway using the Guided Installation, use the same procedure on the computer that you want to add.

When the **Setup wizard** informs you that the Thomson Gateway has already been configured, select **No** and click **Next** to continue.



Manual Installation

Setting up a wireless connections

For more information on how to setup a wireless connection to your Thomson Gateway, see "3 Wireless Access" on page 27.

Setting up a wired connection

For more information on how to setup a wired connection (i.e. an Ethernet connection) to your Thomson Gateway, see "1.4 Connecting a Computer Using the Ethernet Cable" on page 14.

1 Installation

1.4 Connecting a Computer Using the Ethernet Cable

Requirements

- Both your computer and Thomson Gateway must have a free Ethernet port.
- Your computer must be configured to obtain an IP address automatically. This is the default setting.

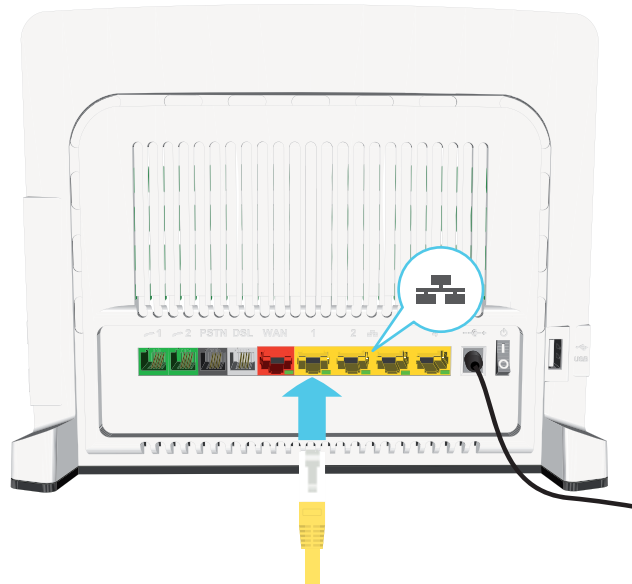
Ethernet cable

In your package, you will find a cable with yellow connectors. This is the Ethernet cable.

Procedure

Proceed as follows:

- 1 Connect one end of the Ethernet cable to one of the **yellow** Ethernet ports of your Thomson Gateway:



You can not use the red **WAN** port for this. The **WAN** port can only be used to connect your Thomson Gateway to an Internet gateway/modem.

- 2 Connect the other end of the Ethernet cable to your computer.
- 3 Your computer is now connected to your network. No additional configuration is needed.

2 Thomson Gateway Basics

In this chapter

Topic	Page
Thomson Gateway LED Behaviour	16
Thomson Gateway GUI	22
Backing Up/Restoring your Configuration	25

2 Thomson Gateway Basics

2.1 Thomson Gateway LED Behaviour

Content

This chapter describes the behaviour of:

- Status LEDs
- WPS Button LED
- Ethernet LEDs

2.1.1 Status LEDs

Introduction

On the front panel of your Thomson Gateway, you can find a number of status LEDs, indicating the state of the device.

Power LED

Colour	State	Description
Green	Solid on	Power on, normal operation
Red	Solid on	Power on, self-test failed, indicating device malfunction
Orange	Blinking	Bootloader active (during upgrade)
Off		Power off

Ethernet LED

Colour	State	Description
Green	Solid on	Ethernet connection, no activity
	Blinking	Ethernet activity
Off		No Ethernet connection

USB LED

Colour	State	Description
Green	Solid on	Device connected to the Thomson Gateway's USB port
Off		No device connected to the Thomson Gateway's USB port

Wireless LED

Colour	State	Description
Green	Solid on	No wireless activity, WPA(2) encryption
	Blinking	Wireless activity, WPA(2) encryption
Orange	Solid on	No wireless activity, WEP encryption
	Blinking	Wireless activity, WEP encryption

2 Thomson Gateway Basics

Colour	State	Description
Red	Solid on	No wireless activity, no security
	Blinking	Wireless activity, no security
Red/green	Toggling	Wireless client registration phase
Off		WLAN disabled

Phone LED

Colour	State	Description
Green	Solid on	VoIP service up
	Blinking	VoIP activity
Off		VoIP service down

Broadband LED

Colour	State	Description
Green	Solid on	DSL line synchronised
	Blinking	Pending DSL line synchronisation
Off		No DSL line

Internet LED

Colour	State	Description
Green	Solid on	Internet connectivity, no activity
	Blinking	Internet activity
Red	Solid on	Internet connection setup failed
Off		No Internet connection

TV LED

Colour	State	Description
Green	Solid on	Set-Top Box (STB) connected to the Thomson Gateway
	Blinking	Unknown STB connected to the Thomson Gateway
Off		No STB connected to the Thomson Gateway

Upgrade LED

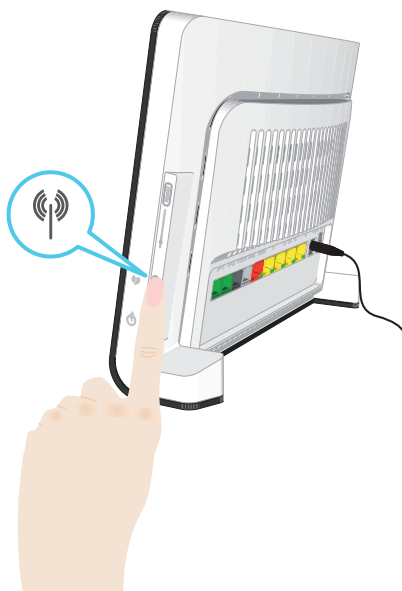
Colour	State	Description
Blue	Solid on	Software upgrade ongoing
Off		No software upgrade ongoing

2 Thomson Gateway Basics

2.1.2 WPS Button LED

WPS button

The Wi-Fi Protected Setup (WPS) button allows you to add new wireless clients to your network.



For more information, see “3.1 Connecting Your Wireless Client via WPS” on page 28.

WPS Button LED

Colour	State	Description
Green	Solid On	Client successfully registered via WPS
Orange	Blinking	WPS registration ongoing
Red	Blinking	Error occurred

2.1.3 Ethernet LEDs

Ethernet LED

A LED may be provided per Ethernet port to indicate link integrity (or activity).

LED Status	Description
Off	No connection on this port
Solid on	Ethernet link up
Blinking	Data is flowing from/to this port

2 Thomson Gateway Basics

2.2 Thomson Gateway GUI

Introduction

The Thomson Gateway Graphical User Interface (GUI) allows you to configure your Thomson Gateway using your web browser.

Requirements

JavaScript must be enabled (this is the default setting) on your browser. For more information, consult the help of your web browser.

Accessing the Thomson Gateway GUI

Proceed as follows:

- 1 Open your web browser.
- 2 Browse to <http://dsldevice.lan> or to the IP address of your Thomson Gateway (by default: 192.168.1.254).
- 3 If you have protected your Thomson Gateway with a user name and password, the Thomson Gateway will prompt you to enter these. Enter your user name and password and click **OK**.
- 4 The Thomson Gateway GUI appears.

Access the Thomson Gateway via UPnP

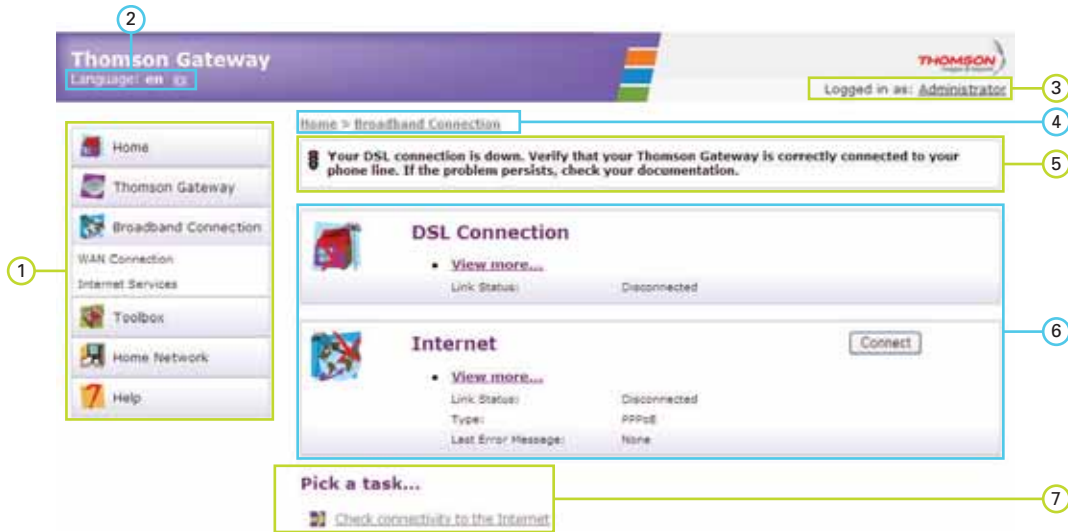
You can also access the Thomson Gateway GUI using the Internet Gateway Device (IGD) icon if your computer runs one of the following operating systems:

- Windows 7
- Windows Vista
- Windows XP

For more information, see “7.1 UPnP” on page 62.

Components

All the pages contain following components:



Label	Description
1	Menu
2	Language bar
3	Login section
4	Navigation bar
5	Notification area
6	Content pane
7	Tasks

Menu

The menu consists of the following menu items:

- **Home:**
Allows you to go back to the home page.
- **Thomson Gateway:**
Provides basic information on the Thomson Gateway.
- **Broadband Connection:**
Allows you to view/configure your broadband connections.
- **Toolbox:**
Allows you to configure the network services and Internet security settings of your Thomson Gateway.
- **Home Network:**
Allows you to manage your local network.
- **Help:**
Allows you to view context-related help information.

2 Thomson Gateway Basics

Language bar

The language bar allows you to change the language of the Thomson Gateway Web interface.



The language bar will only be shown if more than one language is available.

Login section

In this section you can see the current user name.

By clicking the user name, you can:

- Change your password.
- Switch to another user.

Navigation bar

The location bar displays your current position on the Thomson Gateway GUI.

Notification area

The notification area is used to display:

- Error messages, indicated by a red traffic light.
- Warnings, indicated by an orange traffic light.
- Information, indicated by a green traffic light.



If none of these events occur, the notification area will not be shown.

Content pane

The content pane displays the information and configurable items of the selected item.

Tasks

To allow a quick configuration of your Thomson Gateway, some pages may offer you a number of related tasks in the **Pick a task** list. These tasks will guide you to the page where you can perform the selected task.

2.3 Backing Up/Restoring your Configuration

Introduction

Once you have configured your Thomson Gateway to your needs, it is recommended to backup your configuration for later use. This way you can always return to your working configuration in case of problems.

Backing up your configuration

Proceed as follows:

- 1 Browse to the Thomson Gateway GUI.
- 2 On the **Thomson Gateway** menu, click **Configuration**.
- 3 In the **Pick a task** list, click **Save or Restore Configuration**.
- 4 Under **Backup current configuration**, click **Backup Configuration Now**.
- 5 The Thomson Gateway prompts you to save your backup file.
- 6 Save your file to a location of your choice.

Warning

Do not edit the backup files, this may result in corrupt files making them worthless as a configuration backup.

Restoring your configuration

Proceed as follows:

- 1 Browse to the Thomson Gateway GUI.
- 2 On the **Thomson Gateway** menu, click **Configuration**.
- 3 In the **Pick a task** list, click **Save or Restore Configuration**.
- 4 Under **Restore saved configuration**, click **Browse**.
- 5 Browse to your backup file and open it.



These files usually have **.ini** as extension.

- 6 The Thomson Gateway restores your configuration.

2 Thomson Gateway Basics

3 Wireless Access

Introduction

With the built-in wireless access point you do no longer need a cable connection between your computer and your Thomson Gateway.

What you need to set up a wireless network

To set up a wireless network, you need the following components:

- A Wireless Access Point (integrated into your Thomson Gateway)
- A Wireless client

Wireless Access Point

You can consider the wireless access point as the heart of your wireless network. The wireless access point:

- Connects different wireless devices with each other.
- Secures the data sent over wireless connection.

The Thomson Gateway comes with an integrated wireless access point.

Wireless client

The wireless client allows you to connect a device, typically a computer, to a wireless access point. Both built-in and external (for example via USB) clients are available.



Other devices like media players and smartphones may also have a built-in wireless client. Check the documentation of your device for more information.

Check the documentation of your computer if you are not sure if your computer is equipped with a wireless client.

Configuring your wireless clients

Before you can start surfing the internet with a wireless connection, you must first connect your wireless client to your Thomson Gateway wireless access point.

For more information, see “3.1 Connecting Your Wireless Client via WPS” on page 28 and “3.2 Connecting Your Wireless Client without WPS” on page 30.

Secure your wireless connection!

Because you no longer need a physical connection, everyone who is within the range of your Thomson Gateway can access your network. If you do not protect your wireless network, the following could happen:

- People can use your connection to access the Internet.
- Hackers can use your connection to commit computer crimes.

You can easily prevent this by securing your wireless connection. For more information, see “3.3 Securing Your Wireless Connection” on page 31.

3 Wireless Access

3.1 Connecting Your Wireless Client via WPS

WPS

Wi-Fi Protected Setup (WPS) allows you to add new wireless clients to your network in a swift and easy way, without the need to enter all your wireless settings (network name, wireless key, encryption type).

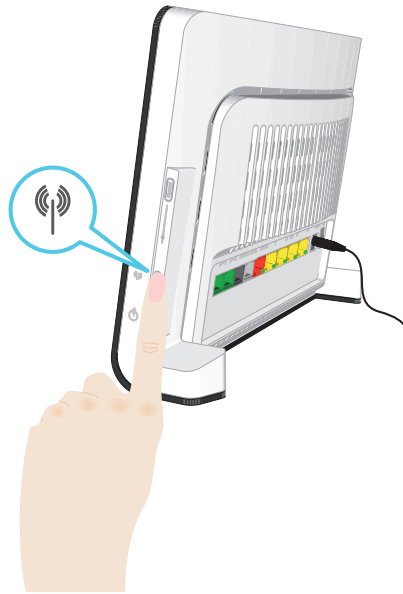
Requirements

- Your wireless client must support WPS. Check the documentation of your wireless client for this.
- Your Thomson Gateway must use WPA(2)-PSK encryption (default encryption) or no encryption. WPS with WEP encryption is not possible.

Procedure

Proceed as follows:

- 1 Shortly press the WPS button on the Thomson Gateway:



- 2 The WPS button LED starts blinking orange. This indicates that the Thomson Gateway is now searching for wireless clients that are in registration mode. You now have two minutes to start WPS on your wireless client.
- 3 Start WPS on your wireless client.

The WPS button LED is solid green

This indicates that you have successfully registered your wireless client. You are now connected to the Thomson Gateway network.

The WPS button LED is blinking red

This indicates that the Thomson Gateway could not find your wireless client. Make sure that the WPS button LED is blinking orange when you start WPS on your wireless client.

Troubleshooting

If you are having trouble connecting your wireless client via WPS, try to configure it manually. For more information, see "3.2 Connecting Your Wireless Client without WPS" on page 30.

3 Wireless Access

3.2 Connecting Your Wireless Client without WPS

Before you start

Before you can connect a computer to your wireless network you need to know the wireless settings that are currently used by the Thomson Gateway, i.e.:

- The Network Name (SSID)
- The wireless key

What Network Name (SSID) is my Thomson Gateway using?

If you did not change the SSID manually, your Thomson Gateway uses the Network Name that is printed on the back panel label of your Thomson Gateway.

What wireless security is my Thomson Gateway using?

You have not yet configured your Thomson Gateway

In this case, no wireless key is used.

You have already configured your Thomson Gateway using the Guided Installation

If you choose to use the wireless settings proposed by the Setup wizard, you can find the wireless key on the label on the back of your Thomson Gateway.

Forgot your wireless settings?

If you have changed the wireless settings manually and you can't remember your settings, try one of the following:

- If one of your computers is already connected to your network:
 - 1 Browse to the Thomson Gateway GUI on that computer.
 - 2 On the **Home Network** menu, click **Wireless**.
 - 3 In the upper-right corner, click **Details**.
 - 4 Under:
 - ▶ **Configuration**, you can find the network name (SSID).
 - ▶ **Security**, you can find the encryption.
- If none of your computers is connected to your network, connect a computer using a wired connection and follow the procedure above to find out what your wireless settings are.

The last option is to reset your Thomson Gateway (all your changes will be lost!) and reconfigure it. For more information, see "9.6 Reset to Factory Defaults" on page 85.

Procedure

Configure your computer with the same wireless settings as your Thomson Gateway. For more information, consult the documentation of your wireless client.

3.3 Securing Your Wireless Connection

Introduction

By using encryption, you can protect the wireless communication between the wireless clients and your Thomson Gateway with a wireless key. This way, only clients which use the correct Network Name (SSID) and wireless key can connect to your network.

Encryption types

Over the years a number of encryption types have been developed. The list below gives you an overview of the supported encryption types ordered by descending security level, you will find the highest level of security at the top of the list:

- **WPA-PSK Encryption:**
The wireless data is being encrypted with a user-defined key. Wireless clients must be configured with this key before they can connect to the Thomson Gateway.
- **WEP Encryption:**
The first encryption type used for wireless connections. Like WPA-PSK it uses a user-defined key, but WEP has been proven to have some security issues. *We strongly recommend you to use WPA-PSK instead.*

Which encryption type should I use?

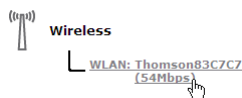
We strongly recommend you to **WPA-PSK**.

Although the Thomson Gateway allows you to use WEP or no security, it is not recommended to use these settings. Only use WEP if you have wireless clients that don't support a higher encryption level.

Configuring the wireless encryption

Proceed as follows:

- 1 Open the Thomson Gateway GUI.
- 2 On the left menu, click **Home Network**.
- 3 Under **Wireless**, click your access point.



Your access point is listed in the following format: "WLAN:<Network Name> (<Actual Speed>)". For example, **WLAN: Thomson83C7C7 (54Mbps)**.

- 4 The **Wireless Access Point** page appears.
- 5 In the Navigation bar, click **Configure**.
- 6 Under **Security**, you can change the **Encryption**. If you want to use:
 - ▶ WPA-PSK encryption, continue with "3.3.1 Configuring WPA-PSK Encryption" on page 32.
 - ▶ WEP encryption, continue with "3.3.2 Configuring WEP Encryption" on page 33.

3 Wireless Access

3.3.1 Configuring WPA-PSK Encryption

Procedure

Continuing from “Configuring the wireless encryption” on page 31:

- 1 Select **Use WPA-PSK Encryption**.
 - 2 In the **WPA-PSK Encryption Key** box, type a the key of your choice. The key must be in one of the following formats:
 - ▶ 8 to 63 alphanumeric characters. For example: MyKey123
 - ▶ 8 to 64 hexadecimal characters (characters from 0 to 9 and from A to F). For example: C54F48A5.
 - 3 In the **WPA-PSK Version** list, click the WPA-version of your choice. Following options are available:
 - ▶ **WPA2:**
WPA2 is the most secure version, but not all wireless clients already support it. Before you select this version, make sure all of your wireless clients support it.
 - ▶ **WPA+WPA2:**
If not all of your wireless clients support WPA2 or you are not sure if they support WPA2, we recommend you to choose WPA+WPA2. Wireless clients that support WPA2 will use WPA2, the others will use WPA.
 - ▶ **WPA:**
If none of your wireless clients support WPA2 choose this option.
-
- If you want to configure WPA2 on the built-in wireless utility of Windows XP Service Pack 2 (SP2), you first have to:
- Upgrade your Windows XP to Service Pack 3.
 - or -
 - Install the following update: <http://support.microsoft.com/kb/917021>.
- 4 Click **Apply**.
 - 5 Configure your wireless client(s) with the same settings.

3.3.2 Configuring WEP Encryption

Warning

Although the Thomson Gateway allows you to use WEP or no security, it is not recommended to use these settings. Only use WEP if you have wireless clients that do not support any higher encryption levels.

Procedure

Continuing from “Configuring the wireless encryption” on page 31:

- 1** Select **Use WEP Encryption**
- 2** In the **WEP Key Length** list, click the desired key length (a higher key length offers higher security).
- 3** In the **Encryption key** box, type a Network key of your choice. If you are using:
 - ▶ A 64-bit key:
Type 10 hexadecimal characters (characters from 0 to 9 and from A to F) or 5 alphanumeric characters.
 - ▶ A 128-bit key:
Type 26 hexadecimal characters (characters from 0 to 9 and from A to F) or 13 alphanumeric characters.
- 4** Click **Apply**.
- 5** Configure your wireless client(s) with the same settings.

3 Wireless Access

4 Telephony

Voice over IP (VoIP)

VoIP is a technology in which telephone calls are made over the Internet. This allows you to save on communication costs, especially for long-distance calls.

The expensive solution

To be able to make your phone calls over the Internet you could:

- Buy an IP phone.
These IP phones are special phones that you can connect to your Internet Gateway.
- Install VoIP software on your computer and make your phone calls via your computer.

The THOMSON solution

With the Thomson Gateway you can make both VoIP and traditional telephone calls using a traditional analogue phone or

If your Thomson Gateway is not powered, the traditional telephone network (if connected) will automatically selected. This way you are still able to make emergency calls.

In this chapter

This chapter covers following topics:

Topic	Page
Setting Up Your Telephone Network	36
Address Book	41
Telephony Services	42
Viewing Telephony Statistics	48

4 Telephony

4.1 Setting Up Your Telephone Network

Procedure

To set up your Thomson Gateway successfully, you must follow the following steps:

- 1** Connect your traditional phone(s) or fax to the green **Phone** port(s) on the Thomson Gateway's back panel.
- 2** Connect your Thomson Gateway to the traditional network.
For more information, see "4.1.1 Connection to the Traditional Telephone Network" on page 37.
- 3** Configure the VoIP service on your Thomson Gateway.
For more information, see "4.1.2 Configuring the Thomson Gateway VoIP Settings" on page 38.

4.1.1 Connection to the Traditional Telephone Network

Combining VoIP with the traditional telephone network

The Thomson Gateway allows you to use both the traditional telephone network (PSTN) as the VoIP network on the same device.

This way, you can still make calls over the traditional network if the VoIP service is down (e.g. your Thomson Gateway is powered off).



Be aware that, if you are not connected to the traditional telephone network, emergency calls will not be possible when your Internet connection is down or your Thomson Gateway is powered off.

What do I have to do to configure this?

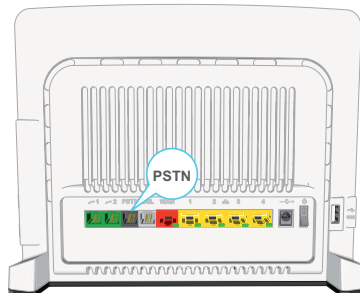
If your Thomson Gateway:

- Does **not** have a **PSTN** port on its back panel then the Thomson Gateway has an integrated filter. Both DSL and PSTN are coming in via the DSL port, so no extra connections are needed.



In this case the DSL port must be directly connected to your telephone outlet. Do not put any filter or splitter between them!

- Has a **PSTN** port on its back panel you have to connect this port to the **Phone** output of your filter or splitter:



For more information about filters and splitters, see “Filters and splitters” on page 5.

4 Telephony

4.1.2 Configuring the Thomson Gateway VoIP Settings

Introduction

If you configured your Thomson Gateway using the Guided Installation, the VoIP settings may already be configured by the Setup wizard.

If you choose to configure your Thomson Gateway manually or you still need to configure the VoIP settings, you can follow the procedure below.

How can I check if the VoIP settings have already been configured?

If the Phone LED is:

- Solid or blinking green then the telephony service has already been configured. No configuration is needed.
- Off then telephony service is not yet configured. Follow the instructions below.

Requirements

Your Internet connection must be up and running before you can configure Internet telephony.

Configuring the VoIP settings

Proceed as follows:

- 1 Enter the proxy and registrar settings.
- 2 Enter your VoIP account settings.

Enter the proxy and registrar settings

Proceed as follows:

- 1 Browse to the Thomson Gateway GUI.
- 2 On the **Toolbox** menu, click **Telephony**.
- 3 In the Navigation bar, click **Expert configure**.
- 4 Complete the following fields with the settings provided by your VoIP provider:
 - ▶ **Proxy:**
Type the URL (for example: sip.provider.com) or IP address of the proxy.
 - ▶ **Registrar:**
Type the URL (for example: sip.provider.com) or IP address of the registrar.
 - ▶ **Registrar Port** and **Proxy Port.**
In most cases the default port (5060) will be used. Only change these values if your provider is using other port numbers.
- 5 Click **Apply**.

Enter your VoIP account settings

Proceed as follows:

- 1 In the **Navigation bar**, click **Configure**.
- 2 Under **Service Configuration**, select **Enable Telephony**.
- 3 Under **Telephone Numbers**, complete the following fields:
 - ▶ **SIP URI:**
The Uniform Resource Identifier (URI) of your SIP account (for example: 050579, john.doe,...). This is the telephone number that people have to dial to call you.
 - ▶ **Username:**
The user name of your VoIP account (for example: 050579, john.doe,...).
 - ▶ **Password:**
The password of your VoIP account.
 - ▶ **Displayname:**
The name that you want people to see on the phone's screen when you are calling. Your VoIP provider may not support this feature.
 - ▶ **Abbreviated number:**
An internal number to call the phones associated with this VoIP account.
 - ▶ **Port:**
The phone port that you want to associate with this VoIP account. If you want to use the same VoIP account for all ports, select Port '**All**'.
- 4 Click **Apply**.

Verifying Telephone Connectivity

Proceed as follows to verify the voice connection:

- 1 Make sure the Thomson Gateway is turned on.
- 2 Check whether your phone is properly attached to the Thomson Gateway.
- 3 Make sure the Internet telephony service is enabled and configured.
- 4 The **Phone** LED must be solid green.
- 5 Pick up your phone, wait for the dialling tone, and dial the number. If you dial a '#' after the phone number, the phone number will be called over the traditional telephone network.



The phone(s) attached to the Thomson Gateway can only receive incoming VoIP calls, as long as your Thomson Gateway is turned on and the **Phone** LED is lit.

For calls over the traditional telephone, your phones are line-powered by the telephone company and can therefore always be reached, even if the Thomson Gateway is turned off.

Multiple Identities

You can assign up to three Internet telephone numbers or URIs to one or both phone ports, or you can assign a common number to both phone ports.

Using Multiple Identities

Proceed as follows:

- 1 Browse to the Thomson Gateway GUI.
- 2 On the **Toolbox** menu, click **Telephony**.
- 3 In the **Navigation bar**, click **Configure**.
- 4 In the **Pick a task** list, click **Use multiple identities**.

4 Telephony

- 5 Click **Add**.
- 6 Enter another URI, your user name and password.
- 7 Choose the phone port for which you want to use this telephone number.
- 8 Click **Apply**.

4.2 Address Book

Introduction

The Address Book page is located on the Thomson Gateway GUI and allows you to:

- Store your contacts on the Thomson Gateway GUI.
- Initiate a call or send a message by clicking the phone number or e-mail address in the contact details.

Accessing the Address Book page

Proceed as follows:

- 1 Browse to the Thomson Gateway GUI.
- 2 On the **Toolbox** menu, click **Address Book**.
- 3 The **Address Book** page appears.

Managing contacts

To:

- Add a contact, click **Add**.
- Edit a contact, click **Edit**.
- Delete a contact, click **Delete**.

All information provided per contact is optional except for the last and first name, and can be updated or completed at any time.



The Address book resides on the Thomson Gateway, so everyone with access to the Thomson Gateway web interface can view and use the Address book.

Using the Address book

The contact details of a contact in your Address book allow you to directly make a call or send a message from out the Thomson Gateway web interface.

Per contact you can click (if available):

- **Business:** to make a call to the contact's business telephone number
- **Home:** to make a call to the contacts home telephone number
- **Mobile:** to make a call to the contact's mobile telephone number
- **Other or SIP uri:** to make a call to the contact's VoIP telephone number
- **E-mail** to send an E-mail message to the contact with your e-mail client.

4.3 Telephony Services

Introduction

Telephony services add extra functionality to your phone. For example: putting a call on hold, transferring calls,...

Requirements

Before you can use a service, it:

- 1** Must be supported by your service provider.
For more information, see "4.3.1 Services supported by Your Service Provider" on page 43.
- 2** Must be activated on your Thomson Gateway.
For more information, see "4.3.2 Activating a Telephony Service on your Thomson Gateway" on page 44.

Only if these two conditions are met, you will be able to use all functions associated to the service. For more information, see "4.3.3 Using Telephony Services" on page 45.

4.3.1 Services supported by Your Service Provider

Procedure

To see which services are supported by your provider:

- 1 Browse to the Thomson Gateway GUI.
- 2 On the **Toolbox** menu, click **Telephony**.
- 3 In the Navigation bar, click **Configure**.
- 4 In the **Pick a task** list, click **View Telephony Services**.
- 5 Under **Telephony Services**, you can see the services that are supported by your provider.

Activation

If you want to use one of the supported services, make sure it is activated. For more information, see “4.3.2 Activating a Telephony Service on your Thomson Gateway” on page 44.

4 Telephony

4.3.2 Activating a Telephony Service on your Thomson Gateway

How can I (de)activate a service on my Thomson Gateway?

You can (de)activate services in two ways:

- Via (de)activation codes on your phone.
- Via the Thomson Gateway GUI.

Activating a Telephony Service via Your Phone

Where can I find the (de)activation codes?

Proceed as follows:

- 1 Browse to the Thomson Gateway GUI.
- 2 On the **Toolbox** menu, click **Telephony**.
- 3 In the Navigation bar, click **Configure**.
- 4 In the **Pick a task** list, click **View Telephony Services**.
- 5 In the **Telephony Services** table, you can find the activation and deactivation codes.

• Telephony Services

Service	Activation Code	Deactivation Code	Activated
Call Hold	*94	#94	Yes
Call Waiting	*43	#43	Yes
Call Waiting On Call Basis	*43*	#43*	Yes
Call Transfer	*96	#96	Yes
Conference Call (3 Party)	*95	#95	Yes
Calling Line Identification Presentation	*30	#30	Yes

Using the codes

To (de)activate one of the services just dial the corresponding code on your phone.

For example, to activate **Call Hold** dial *94; to deactivate the service dial #94.

Activating a Telephony Service via the Thomson Gateway GUI

Proceed as follows:

- 1 Browse to the Thomson Gateway GUI.
- 2 On the **Toolbox** menu, click **Telephony**.
- 3 In the Navigation bar, click **Configure**.
- 4 In the **Pick a task** list, click **View Telephony Services**.
- 5 In the Navigation bar, click **Configure**.
- 6 To:
 - ▶ Activate a service select the check box next to the service.
 - ▶ Deactivate a service clear the check box next to the service.
- 7 Click **Apply**.

4.3.3 Using Telephony Services

Introduction

This section provides an overview of the functions that will be available if you activate one of the following services:

- Call Hold service
- Call Waiting service
- Conference Call (3 Party) service
- Call Transfer

For more information on the other services, please contact your service provider.

Call Hold service

If the **Call Hold** service is activated, you can use the following functions:

To...	Press...	Illustration
Put an active call on hold and enable a call set up (the dial tone is generated)	R, 2	
Terminate the call on hold	R, 0	
Terminate an active call and switch to the call on hold	R, 1	
Retrieve the call on hold (when there is no active call)	R, 1	
Terminate an active call and enables a call set up (the dial tone is generated)	R, 9	

4 Telephony

Call Waiting service

If the **Call Waiting** service is activated, you can use the following functions:

To...	Press...	Illustration
Terminate an active call and switch to an incoming call	R, 1	
Reject an incoming call	R, 0	
Switch between an active call and a call on hold	R, 2	
Switch between an active call and an incoming call	R, 2	

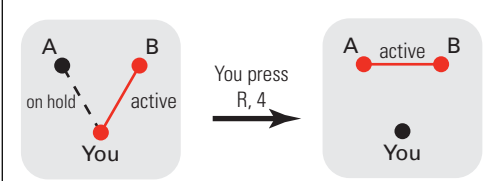
Conference Call (3 Party) service

If the **Conference Call (3 Party)** service is activated, you can use the following functions:

To...	Press...	Illustration
Establish a conference call (or 3 party connection)	R, 3	
During a conference call: put B and C on hold	R, 2	
During a conference call: retrieve B and C when they are on hold	R, 3	

Call Transfer

If the **Call Transfer** service is activated, you can use the following functions:

To...	Press...	Illustration
Transfer a call	R, 4	 <p>The illustration shows two states of a call. In the first state, 'You' is connected to 'B' (active), and 'A' is on hold. Pressing 'R, 4' results in 'A' and 'B' being active together, and 'You' being disconnected.</p>

4 Telephony

4.4 Viewing Telephony Statistics

Introduction

The **Telephony Statistics** page on the Thomson Gateway GUI lists:

- Successful incoming calls.
- Missed incoming calls.
- Successful outgoing calls.
- Failed outgoing calls.



Viewing the telephony statistics

Proceed as follows:

- 1 Browse to the Thomson Gateway GUI.
- 2 On the **Toolbox** menu, click **Telephony**.
- 3 The **Telephony** page appears.
On this page you can see an overview of your last calls.
- 4 To view more detailed statistics, click **View telephony statistics and logs** in the **Pick a task** list.
- 5 The **Telephony Statistics** page appears and displays the number of:
 - ▶ Successful incoming calls.
 - ▶ Missed incoming calls.
 - ▶ Successful outgoing calls.
 - ▶ Failed outgoing calls.for each phone separately and combined.

Used icons

To displays the call logs, the following icons are used:

Icon	Description
	Incoming call
	Outgoing call

5 Saving Energy with Your Thomson Gateway

Code of Conduct v3

To prove its commitment to protect the environment, THOMSON has signed the Code of Conduct v3 (CoC v3), an agreement to reduce the power consumption of broadband devices.

It provides rules for the power consumption in:

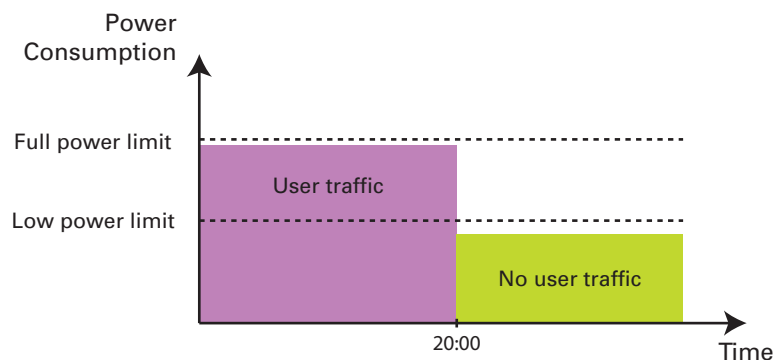
- Full power state:
This is the normal operation mode of the device, where all functionality is enabled.
- Low power state:
When there is no user traffic on the device, the device should switch to low power mode. This is a state in which devices are only allowed to use a limited amount of energy to be able to power its components and respond to user activity.

Example:

Take the following example:

- The user switches off his computer at 20:00.
- There are no other devices connected to the Thomson Gateway.

The Thomson Gateway switches to low power mode. This results in a considerable drop in the overall power consumption of the Thomson Gateway.



THOMSON power saving innovations

On top of the CoC v3 measures, THOMSON has developed the Automatic Power Management to further reduce the power consumption.

Automatic Power Management

The Thomson Gateway constantly monitors the user activity and uses this information to optimise the power consumption:

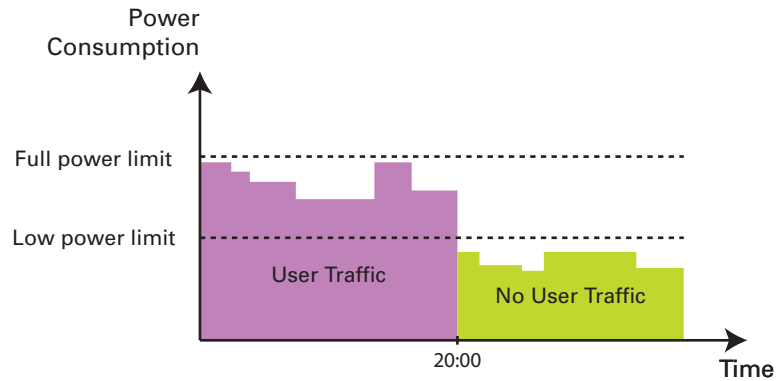
For example:

- When there is no or low user activity, the Thomson Gateway *reduces the clock frequency of the central processor*. The lowered clock frequency will result in a lower power consumption.
- *Switch the wireless interface to a reduced power mode* in which the access point is available for connection, but other functions are turned off. This is only possible if there are no devices connected to the Thomson Gateway.

5 Saving Energy with Your Thomson Gateway

Example:

If we use the same example as in the previous section, you can see that the Thomson Gateway is now able to further reduce the power consumption in periods where there is less action required from the Thomson Gateway (for example: no wireless devices connected, low user traffic,...).



Zero Power Consumption

If you will not be using your Thomson Gateway for a longer time (for example: you are going on holiday), you might consider to turn off the Thomson Gateway. This way no energy will be consumed at all.

Be aware that if you turn off the Thomson Gateway, **all services provided by it will not be available**. For example:

- No VoIP calls
You will no longer be able to make phone calls over the Internet. Your phone calls will automatically be done via the traditional phone network (if available).
- No Digital TV
If your set-top box is connected to your Thomson Gateway, he will no longer be able to connect to the Internet.
- ...

6 Sharing Content on your Thomson Gateway

Introduction

The Thomson Gateway allows you to store your data on a centralised place in the network. This way you can share your files with everyone that is connected to your network.

Requirements

Your USB storage device must be formatted as FAT32.

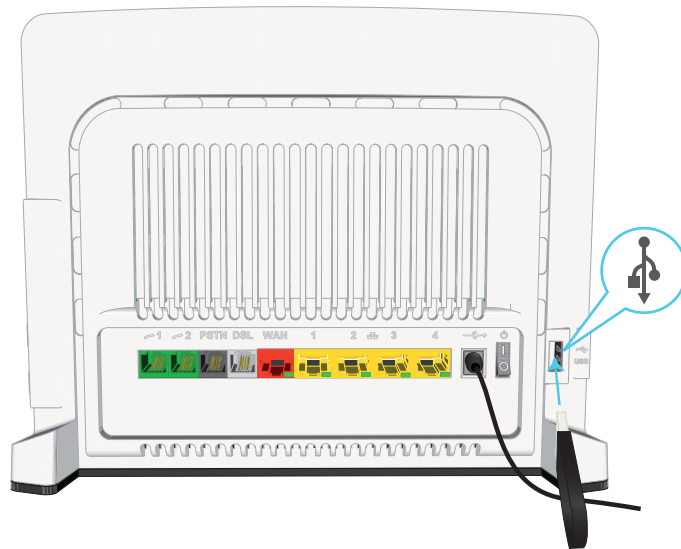


To format your device for FAT32, consult the help of your operating system. Make sure to make a copy of your data before you do this. Formatting your device will erase all data.

Connecting your USB storage device to the Thomson Gateway

Proceed as follows:

- 1 Plug your USB memory stick or external hard disk in (one of) the USB master port(s) of your Thomson Gateway.



Do not remove your USB storage device without unmounting it first, otherwise data might be lost! For more information, see “6.5 Safely Removing your USB Storage Device” on page 60.

- 2 If you want to:
 - ▶ Share your files with other devices on the network (for example: a computer) proceed with “6.1 Using the Network File Server” on page 52.
 - ▶ Share your media with UPnP AV media clients (for example: a media player or media centre), proceed with “6.2 Using the UPnP AV Media Server” on page 55.
 - ▶ Make your files available for FTP access, proceed with “6.3 Using the FTP Server” on page 56.

6 Sharing Content on your Thomson Gateway

6.1 Using the Network File Server

Introduction

The Network Server allows you to share the content on your USB storage device with other devices that are connected to your *Thomson Gateway network* (mostly computers).

These devices have *read and write access* to this USB device.

Procedure

To enable the Network File Server:

- 1 Browse to the Thomson Gateway GUI.
- 2 On the **Tools** menu, click **Content Sharing**.
- 3 In the Navigation bar, click **Configure**.
- 4 Under **Network File Server (Windows Networking)**, click **Server Enabled**. It is also recommended to complete in following fields:
 - ▶ **Server Name:**
You will use this name to access the Thomson Gateway. If you leave this field empty you can only access your USB storage device by entering the IP address (by default: 192.168.1.253)
 - ▶ **Server Description:**
Here you can add a short description for what kind of data is stored on the USB storage device.
 - ▶ **Workgroup:**
Enter the same workgroup as your computer(s).
- 5 Click **Apply**.
- 6 All users connected to the Thomson Gateway can now connect to your USB storage device.
- 7 If you want to limit the number of folders users can access, continue with "6.4 Managing your Shared Content" on page 58.

6 Sharing Content on your Thomson Gateway

Accessing the shared content on Windows

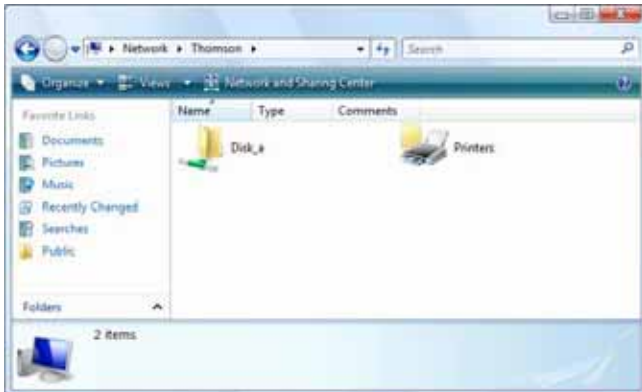
Proceed as follows:

- 1 Open **Windows Explorer**.
- 2 In the address bar type two backslashes followed by the name that you entered in the **Server Name** box (in our example: \\Thomson).



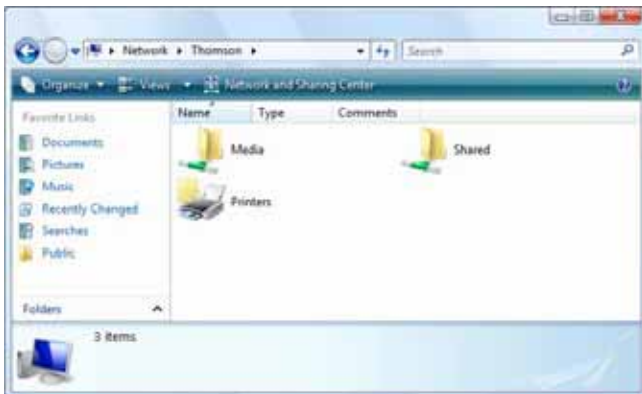
If you did not provide a server name, type \\192.168.1.253.

- 3 All storage devices that are attached to your Thomson Gateway are listed as folders.



If the storage device has multiple partitions an index number will be added at the end (for example: Disk_a1 and Disk_a2).

If the partition is a managed partition, the **Media** and **Shared** folders will be displayed instead:



For more information on managed partitions, see “6.4 Managing your Shared Content” on page 58.

- 4 If you plan to frequently use this folder, it might be useful to map this folder as a network drive. For more information, see your operating system’s help.

6 Sharing Content on your Thomson Gateway

Accessing the shared content on Mac

Proceed as follows:

- 1 On the **Go** menu, click **Connect To Server**.
- 2 The **Connect To Server** window appears.
- 3 In the **Server Address** box, type **smb://<server name>**, where <server name> is the Server Name you assigned to your USB storage device. So in our example we will type **smb://Thomson**.



If you did not provide a server name, type **smb://192.168.1.253**.

- 4 The **SMB Mount** window appears.



Select the shared folder you want to mount and click **OK**.

- 5 The **SMB/CIFS Filesystem Authentication** window appears. You do not need to authenticate, click **OK**.
- 6 Your USB storage device is now mounted and is displayed on your desktop.

6.2 Using the UPnP AV Media Server

UPnP AV protocol

UPnP AV (AV stands for Audio and Video) is a protocol especially designed to share *media* files on your *local network*.

UPnP AV network components

A UPnP AV network consists of the following components:

- The *UPnP Server* is directly connected to your media files and makes them available on the network. In your network the Thomson Gateway will fulfil this role.
- The *UPnP client* is a software application or hardware device that allows you to play or view the media files provided by your UPnP AV media server.

Setting up the UPnP AV server

Proceed as follows:

- 1 Browse to the Thomson Gateway GUI.
- 2 On the **Tools** menu, click **Content Sharing**.
- 3 In the Navigation bar, click **Configure**.
- 4 Under **UPnP AV Media Server**, click **Server Enabled**.
- 5 Click **Apply**.

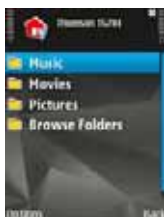
Result

The Thomson Gateway lists all audio, video and picture files located on the connected USB storage device. All UPnP AV clients that are connected to your network are now able to view this list and play or view items from this list.

On your UPnP AV client, the Thomson Gateway's UPnP AV media server will be listed as **THOMSON TGXXX** or **Thomson MediaGateway**. Below you can find a screenshot taken on a smartphone with a UPnP AV client.



Via this entry, you can browse to your media files.



6 Sharing Content on your Thomson Gateway

6.3 Using the FTP Server

Introduction

The Thomson Gateway allows you to access your shared content by FTP. This can be useful if you want to be able to access your shared content from the Internet.

Via FTP you can *download or upload* all types of files both from your *local network and the Internet*.

Setting up the FTP server

Proceed as follows:

- 1 Protect your account with a password.
- 2 Enable the FTP Server and select the managed partition.

Protect your account with a password

If you did not yet configure your login to the Thomson Gateway GUI with a password:

- 1 Browse to the Thomson Gateway GUI.
- 2 On the **Toolbox** menu, click **User Management**.
- 3 In the **Pick a task** list, click **Change my password**.
- 4 Leave the **Old Password** box empty.
- 5 Type your new password both in the **New Password** box and **Confirm New Password** box.

Enable the FTP Server and select the managed partition

Proceed as follows:

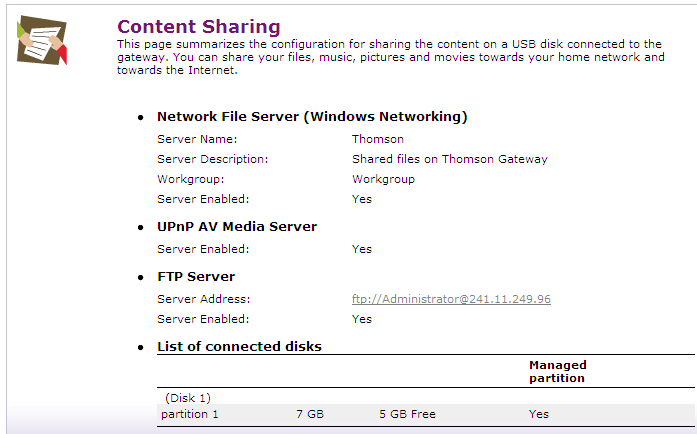
- 1 Browse to the Thomson Gateway GUI.
- 2 On the **Tools** menu, click **Content Sharing**.
- 3 In the Navigation bar, click **Configure**.
- 4 Under **FTP Server**, click **Server Enabled**.
- 5 Under **List of connected disks**, click the radio button next to the partition that you want to access using FTP.
- 6 The Thomson Gateway now creates a **Media** and **Shared** folder on the selected partition. The **Shared** folder will be used as root location for FTP sessions.
- 7 Click **Apply**.

6 Sharing Content on your Thomson Gateway

Result

The **Shared** folder and its subfolders are now accessible using FTP. The other folders are not accessible via FTP.

If you are connected to the Internet, the link to the FTP server is displayed under FTP Server:



Content Sharing
This page summarizes the configuration for sharing the content on a USB disk connected to the gateway. You can share your files, music, pictures and movies towards your home network and towards the Internet.

- Network File Server (Windows Networking)**
 - Server Name: Thomson
 - Server Description: Shared files on Thomson Gateway
 - Workgroup: Workgroup
 - Server Enabled: Yes
- UPnP AV Media Server**
 - Server Enabled: Yes
- FTP Server**
 - Server Address: <ftp://Administrator@241.11.249.96>
 - Server Enabled: Yes
- List of connected disks**

	Managed partition		
(Disk 1)			
partition 1	7 GB	5 GB Free	Yes

On the Thomson Gateway network, you can also access the FTP server using its local address (192.168.1.253).

Additional configuration

Because most service providers use dynamic IP addresses, the IP address of your Internet connection may change frequently. This implies that the link to the FTP server will also change every time the public IP changes. With **Dynamic DNS**, you can assign a host name to the IP address (for example **mygateway.dyndns.org**). For more information, see "7.3 Dynamic DNS" on page 70.

6 Sharing Content on your Thomson Gateway

6.4 Managing your Shared Content

Managed Partition

If you select your drive or partition as managed partition, users only have access to the following folders:

- **Media**
- **Shared**

All other folders will be hidden from the user. These hidden folders are still on the USB storage device, but you can not access them. If you connected more than one USB storage device, those devices will also be hidden.

Media folder

Use the **Media** folder to share your audio, video and picture files. This folder can only be accessed via the following servers:

- The Network File Server
For more information, see "6.1 Using the Network File Server".
- UPnP AV Media Server.
For more information, see "6.2 Using the UPnP AV Media Server".



If your partition is managed, the UPnP AV server will only use the media files that are located in the **Media** folder.

Shared folder

The **Shared** folder is a folder to share files both on the *local network and the Internet*. This folder can only be accessed via the following server:

- The Network File Server
For more information, see "6.1 Using the Network File Server".
- FTP Server
For more information, see "6.3 Using the FTP Server".



The FTP Server can only be used with a managed partition.

Unmanaged vs managed

The following table compares the two modes:

Access via	Accessible folders	
	Unmanaged	Managed
Network File Server	All	Media and Shared folder.
UPnP AV Media Server	All	Media folder.
FTP Server	Not available in this mode.	Shared folder.

6 Sharing Content on your Thomson Gateway

Setting up the managed partition

Proceed as follows:

- 1 Browse to the Thomson Gateway GUI.
- 2 On the **Tools** menu, click **Content Sharing**.
- 3 In the Navigation bar, click **Configure**.
- 4 Under **List of connected disks**, click the radio button next to the partition you want to configure as Managed Partition.
- 5 Click **Apply**.

Result

The Thomson Gateway creates following folders:

- **Media:**
Use this folder to share your media files with others users on your network. You can store your media files in following subfolders:
 - ▶ **Movies**
 - ▶ **Music**
 - ▶ **Pictures**
- **Shared:**
Use this folder to share your other data with other users on your network. Optionally, users can also access this folder using FTP. For more information, see "6.3 Using the FTP Server" on page 56.

If the above folders already exist, the existing folders are used.

6 Sharing Content on your Thomson Gateway

6.5 Safely Removing your USB Storage Device

Introduction

If you just unplug your USB storage device from the Thomson Gateway you may lose your data. To avoid this you must first unmount your USB storage device.

Unmounting your USB storage device

Proceed as follows

- 1 Browse to the Thomson Gateway GUI.
- 2 On the **Toolbox** menu, click **Content Sharing**.
- 3 In the Navigation bar, click **Configure**.
- 4 Click **Unmount**.
- 5 Unplug your USB storage device from the Thomson Gateway.

7 Thomson Gateway Tools

In this chapter

In this chapter we will take a closer look at following features:

Topic	Page
UPnP	62
Assigning a service (HTTP, FTP,...) to a Computer	68
Dynamic DNS	70

Feature availability

Depending on the configuration offered by your service provider, some features may not be available on your Thomson Gateway. For more information, contact your service provider.

7 Thomson Gateway Tools

7.1 UPnP

Introduction

UPnP is designed to automate the installation and configuration of a (small) network as much as possible. This means that UPnP-capable devices can join and leave a network without any effort of a network administrator.

Supported Operating Systems

The following operating systems support UPnP:

- Windows 7
- Windows Vista
- Windows XP



If your computer is running Windows XP, you first have to install the UPnP component. For more information, see “7.1.4 Installing UPnP on Windows XP” on page 66.

UPnP and the Thomson Gateway

With UPnP:

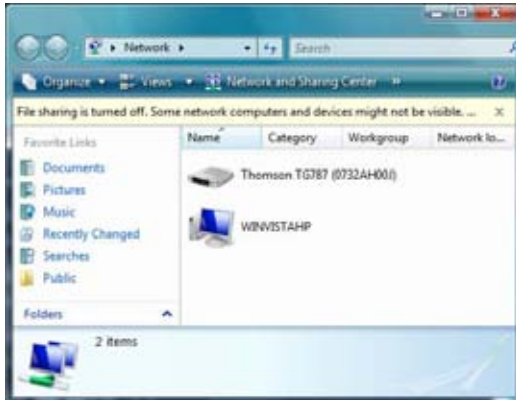
- You can access the Thomson Gateway GUI without having to remember the address of the Thomson Gateway. For more information, see “7.1.1 Accessing Your Thomson Gateway with UPnP” on page 63.
- You can connect/disconnect without having to open the Thomson Gateway GUI. For more information, see “7.1.2 Managing your Internet connection with UPnP” on page 64.
- You do not have to manually create port mappings to run services on a computer. The automatic port configuration mechanism for UPnP-enabled games and applications will do this for you. If the application is UPnP-enabled, UPnP will create these entries automatically. For more information, see “7.2 Assigning a service (HTTP, FTP,...) to a Computer” on page 68.

7.1.1 Accessing Your Thomson Gateway with UPnP

Windows 7/Vista

If you computer runs Windows 7/Vista:

- 1 On the Windows **Start** menu, click **Network**.
- 2 The **Network** window appears:



- 3 Right-click your Thomson Gateway (displayed as THOMSON TGXXX) and click **View device web page**.
- 4 The Thomson Gateway GUI appears.

Windows XP

If you computer runs Windows XP:

- 1 Go to **My Network Places**.
- 2 The **My Network Places** window appears:



- 3 Double-click your Thomson Gateway (displayed as THOMSON TGXXX).
- 4 The Thomson Gateway GUI appears.

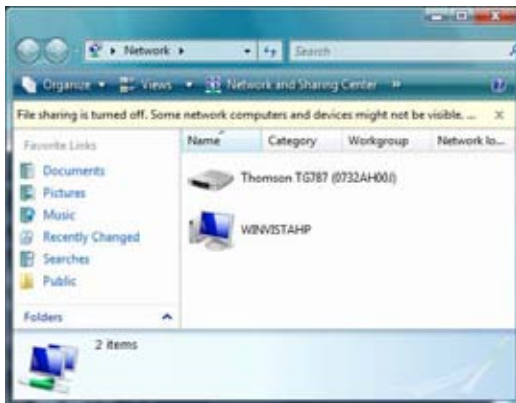
7 Thomson Gateway Tools

7.1.2 Managing your Internet connection with UPnP

Windows 7/Vista

If your computer runs Windows 7/Vista:

- 1 On the Windows **Start** menu, click **Network**.
- 2 The **Network** window appears:



- 3 Right-click your Thomson Gateway (displayed as THOMSON TGXXX).
- 4 If you are currently:
 - ▶ Connected to the Internet, click **Disable** to disconnect from the Internet.
 - ▶ Not connected to the Internet, click **Enable** to connect to the Internet.

Windows XP

Proceed as follows:

- 1 On the Windows **Start** menu, click **(Settings >) Control Panel**.
- 2 The **Control Panel** window appears. Click **(Network and Internet Connections) > Internet Connections**.
- 3 The **Network Connections** window appears;



- 4 If you right-click the **Internet Connection** icon, you can connect/disconnect your connection to the Internet.

Disabling this feature

To prevent that users can connect/disconnect you can enable Extended Security. For more information, see "7.1.3 Configuring UPnP on the Thomson Gateway" on page 65.

7.1.3 Configuring UPnP on the Thomson Gateway

Introduction

On the Thomson Gateway GUI you can:

- Enable/Disable UPnP.
- Enable/Disable Extended Security.

Enable/Disable UPnP

Proceed as follows:

- 1 Browse to the Thomson Gateway GUI.
- 2 On the **Toolbox** menu, click **Game & Application Sharing**.
- 3 Under **Universal Plug and Play**:
 - ▶ Select the **Use UPnP** check box, to enable UPnP.
 - ▶ Clear the **Use UPnP** check box, to disable UPnP.
- 4 Click **Apply**.

Extended Security

If Extended Security is enabled only limited UPnP operation between the host and the Thomson Gateway is allowed:

- A local host is not allowed to connect/disconnect the Thomson Gateway Internet connection. You can then only connect/disconnect the Internet connection via the Thomson Gateway GUI
- Address translation mappings can only be added or changed via UPnP for the host on which the UPnP application is running.

Enable/Disable Extended Security

Proceed as follows:

- 1 Browse to the Thomson Gateway GUI.
- 2 On the **Toolbox** menu, click **Game & Application Sharing**.
- 3 Under **Universal Plug and Play**, select **Use Extended Security**.
- 4 Click **Apply**.

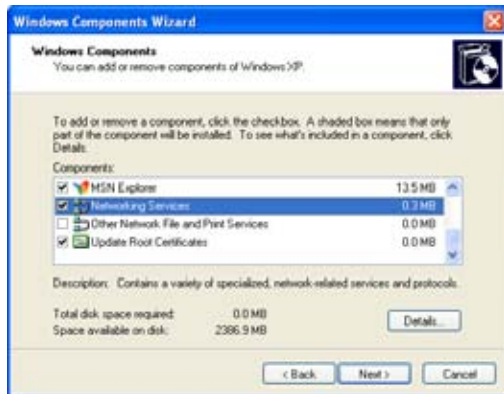
7 Thomson Gateway Tools

7.1.4 Installing UPnP on Windows XP

Adding UPnP

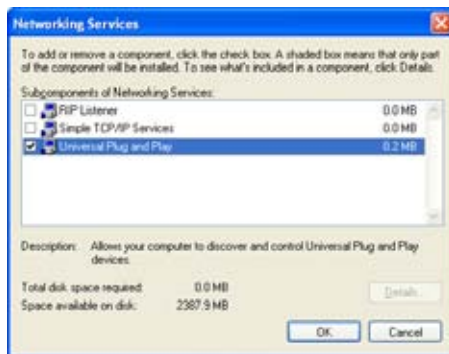
If you are running Microsoft Windows XP, it is recommended to add the UPnP component to your system. Proceed as follows:

- 1 In the **Start** menu, click **(Settings >) Control Panel**.
- 2 The **Control Panel** window appears.
Click **Add or Remove Programs**.
- 3 The **Add or Remove Programs** window appears.
Click **Add/Remove Windows Components**.
- 4 The **Windows Components Wizard** appears:



In the **Components** list, select **Networking Services** and click **Details**

- 5 The **Networking Services** window appears:



Select **Universal Plug and Play** or **UPnP User Interface** and click **OK**.

- 6 Click **Next** to start the installation and follow the instructions in the **Windows Components Wizard**.
- 7 At the end of the procedure the wizard informs you that the installation was successful. Click **Finish** to quit.

Adding IGD Discovery and Control

Your Windows XP system is able to discover and control Internet Gateway Devices (IGD), like the Thomson Gateway on your local network. Therefore, it is recommended to add the IGD Discovery and Control client to your system.

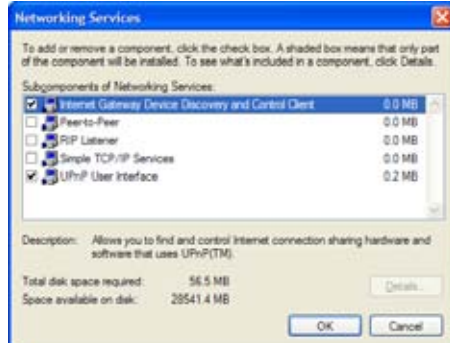
Proceed as follows:

- 1 On the Windows taskbar, click **Start**.
- 2 Select **(Settings >) Control Panel > Add or Remove Programs**.
- 3 In the **Add or Remove Programs** window, click **Add/Remove Windows Components**.
- 4 The **Windows Components Wizard** appears:



Select **Networking Services** in the **Components** list and click **Details**.

- 5 The **Networking Services** window appears:



Select **Internet Gateway Device Discovery and Control Client** and click **OK**.

- 6 Click **Next** to start the installation and follow the instructions in the **Windows Components Wizard**.
- 7 At the end of the procedure, the wizard informs you that the installation was successful. Click **Finish** to quit.

7 Thomson Gateway Tools

7.2 Assigning a service (HTTP, FTP,...) to a Computer

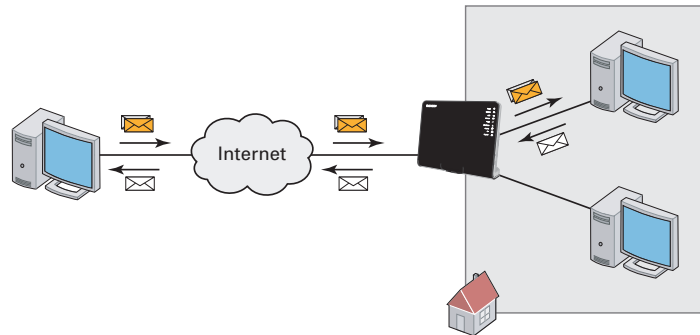
Introduction

The Thomson Gateway allows you to use one internet connection for multiple computers. This means that all your computers share one public IP address, as if only one computer were connected to the outside world.

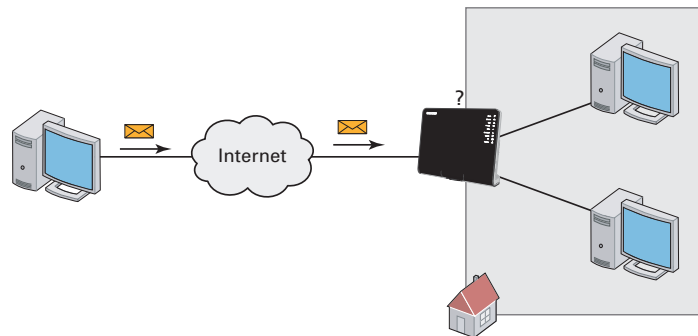
Issue

When the Thomson Gateway receives an incoming message, the Thomson Gateway has to decide to which computer he has to send this message.

If the incoming message is a response to an outgoing message originating from one of your computers, the Thomson Gateway sends the incoming message to this computer.



If you are running a server or an application that acts as a server (for example a HTTP server, internet game), the initial message will come from the internet and the Thomson Gateway has to decide to which computer he should forward the incoming message.



Solution

To avoid this problem you must:

- Enable UPnP.
- Assign a game or application to a local networking device.

UPnP

UPnP is a technology that enables seamless operation of a wide range of games and messaging applications. Your computer will use UPnP to communicate to the Thomson Gateway which services are running on the computer.

For example, when you start a UPnP-enabled application on your computer, it will automatically create the necessary port mappings to this computer.

For more information on UPnP, see “7.1 UPnP” on page 62.

Assign a game or application to a local networking device

If you assign a game or application to a local networking device, you will basically tell the Thomson Gateway that if it receives requests for a specific game or application, it has to forward these messages to a specific computer.

Proceed as follows to do so:

- 1 Browse to the Thomson Gateway GUI.
- 2 On the **Toolbox** menu, click **Game & Application Sharing**.
- 3 In the **Pick a task** list, click **Assign a game or application to a local network device**.
- 4 In the **Game or application** list, click the service you want to run on the computer. For example, **HTTP Server (World Wide Web)**.



If the service is not available in the list, click **Create a new game or application** in the **Pick a task** list. For more information, click **Help** on the Thomson Gateway GUI.

- 5 In the **Device** list, select the computer to which you want to assign the service. Your computer will be listed with its computer name.
- 6 All incoming request for the selected service will now be directed to the selected device. The Thomson Gateway will also configure the its firewall to allow this service.

7.3 Dynamic DNS

Introduction

The Dynamic DNS service allows you to assign a dynamic DNS host name (for example mywebpage.dyndns.org) to a broadband connection even if it is using a dynamic IP address. As soon as the device gets a new IP address, the dynamic DNS server updates its entry to the new IP address.

What you need

Before you can configure Dynamic DNS, you first have to create an account at a Dynamic DNS service provider. For example:

- www.dyndns.org
- www.no-ip.com
- www.dtdns.com

Procedure

Proceed as follows:

- 1 Browse to the Thomson Gateway GUI.
- 2 On the **Toolbox** menu, click **Dynamic DNS**.
- 3 On the Navigation bar, click **Configure**.
- 4 Select the **Enabled** check box.
- 5 If necessary, select the broadband connection to which you want to assign the Dynamic DNS host name in the Interface list.
- 6 Type the user name and password of your Dynamic DNS service account in the corresponding fields.
- 7 In the **Service** list, click the name of your Dynamic DNS service provider.
- 8 In the **Host** box, type the host name that you got from the Dynamic DNS service provider (for example mywebpage.dyndns.org).
- 9 Click **Apply**.

8 Internet Security

Overview

The Thomson Gateway offers you various options to secure your network:

Topic	Page
Firewall	72
Parental Control	73

8 Internet Security

8.1 Firewall

Introduction

The Thomson Gateway comes with an integrated firewall. This firewall has a number of predefined levels to allow you to adjusted the firewall to your needs.

The Firewall is disabled by default.

Changing the security level

Proceed as follows:

- 1 Browse to the Thomson Gateway GUI.
- 2 On the **Toolbox** menu, click **Firewall**.
- 3 The **Firewall** page appears. In the upper-right corner, click **Configure**.
- 4 A list with security settings with a brief description is displayed.
- 5 Select the security level of your choice and click **Apply**.

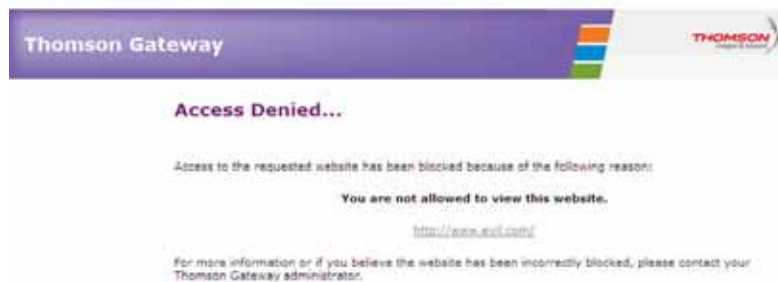
8.2 Parental Control

Introduction

The Thomson Gateway allows you to deny access to specific web sites.

Access Denied page

When a user tries to access a page that is being blocked, the following page is displayed:



Address-based filtering

With address-based filtering (or URL-filtering) you can *block web sites based on their address* (for example www.porn.com).

Content-based filtering

As you know, the Internet consists of a large number of web sites, and that number still increases every day. This makes it almost impossible to keep the list of addresses up-to-date.

To solve this problem Thomson Gateway introduced content-based filtering.

With content-based filtering you can *block web sites based on their content category* (for example pornography) instead of their URL. This way, you only need to select the appropriate categories and the content category server takes care of the rest. This content category server is updated at regular intervals.

Combining the two filters

Address-based filtering has priority over content-based filtering. This means that when you are blocking a specific category, you can still access a specific address provided you create a rule to allow access to that URL.

For example, if you are blocking content from the **Finance / Investment** category, you can create a rule to make an exception for netbanking.mybank.com.

Activating content-based filtering

Before you can use content-based filtering you must first activate it by purchasing a license key at your service provider or by activating the 30-day trial.

Proceed as follows:

- 1 Browse to the Thomson Gateway GUI.
- 2 On the **Toolbox** menu, click **Parental Control**.

8 Internet Security

- 3 In the **Pick a task** list, click **Activate Web Filtering License**.
- 4 The **Web Filtering Activation** page appears. Under **License Type**, select:
 - ▶ **30-days evaluation** if you first want evaluate this feature.
 - ▶ **Standard** if you have already purchased a license key. The License key box appears as soon as you select this option. Type the license key that you received from your service provider in this box.
- 5 Click **Apply**.

Option 1: content-based filter (combined with the address-based filter)

If you want to use the content-based filtering:

- 1 Browse to the Thomson Gateway GUI.
- 2 On the **Toolbox** menu, click **Parental Control**.
- 3 On the Navigation bar, click **Configure**.
- 4 Make sure that the **Use Content-Based Filter** check box is selected.
- 5 Configure the content-based filter. For more information, see “8.2.1 Configuring The Content-based Filter” on page 75.
- 6 If you want to make exceptions for specific web sites, add the necessary rules in the address-based filter. For more information, see “8.2.2 Adding Rules for the Address-Based Filter” on page 76.

Option 2: address-based filter only

Take this option if content filtering is not available on your Thomson Gateway or you don't want to use it.

To configure address-based filtering:

- 1 Browse to the Thomson Gateway GUI.
- 2 On the **Toolbox** menu, click **Parental Control**.
- 3 On the Navigation bar, click **Configure**.
- 4 Make sure that the **Use Address-Based Filter** check box is selected.
- 5 In the **Action for Unknown Sites**, select:
 - ▶ **Allow** as the default rule if you want to allow access to *all* web sites and manually specify which web sites may not be accessed.
 - ▶ **Block** as the default rule if you want to deny access to *all* web sites and manually specify a number of web sites that may be accessed.
- 6 Click **Apply**.
- 7 If you want to make exceptions for specific web sites, add the necessary rules in the address-based filter. For more information, see “8.2.2 Adding Rules for the Address-Based Filter” on page 76.

8.2.1 Configuring The Content-based Filter

Accessing the configuration page

Proceed as follows:

- 1 Browse to the Thomson Gateway GUI.
- 2 On the **Toolbox** menu, click **Parental Control**.
- 3 On the Navigation bar, click **Configure**.
- 4 Under **Content-Based Filtering** you can change the settings of the content-based filter.

Configuring the content-based filter

Under **Content-Based Filtering**:

- 1 Select **Use Content-Based Filter** check box (if needed).
- 2 In the **Action for uncategoryed sites** list, select a default action for sites that have not yet been categorised.
- 3 Under **Content Level**, select the content level you want to use.
If you want a more detailed view of the content that will be blocked for this level, click the **Edit** link next to the content level.
If needed, you can change the **Name**, **Description** and **Configuration** of the content level.
- 4 Click **Apply** after you have made your changes.

Creating your own content level

Proceed as follows:

- 1 In the **Pick a task** list, click **Create a new content level**.
- 2 Enter a **Name** and **Description** for your content level and click **Next**.
- 3 Under **Configuration**, select:
 - ▶ **Clone Existing Level** if you want to start from an existing level. You can now select the level that you want to clone.
 - ▶ **White list** if you want to block everything and select which content should be allowed.
 - ▶ **Black list** if you want to allow everything and select which content should be blocked.Click **Next**.
- 4 Under **Configuration**:
 - ▶ Select the check boxes of the categories/groups you want to allow.
 - ▶ Clear the check boxes of the categories/groups you want to block.
- 5 Click **Apply**.
- 6 Configure the content-based filter with the new level. For more information, see "Configuring the content-based filter" on page 75.

8 Internet Security

8.2.2 Adding Rules for the Address-Based Filter

Introduction

Address-based filtering has a higher priority than content-based filtering. This means that when you are blocking a specific category, you can still access a specific site if you allow it in the address-based filter.

Example

If you block content from the **Finance / Investment** category and allow access to netbanking.mybank.com, netbanking.mybank.com will still be accessible.

Options

With the address-based filter you can:

- Deny access to a specific web site.
- Allow access to a specific web site.
- Redirect a web site.
- Redirect all web sites.

Deny access to a specific web site

Proceed as follows:

- 1 Browse to the Thomson Gateway GUI.
- 2 On the **Toolbox** menu, click **Parental Control**.
- 3 Make sure the **Use Address-Based Filter** check box is selected.
- 4 Type the URL of the Web site you want to block (for example "mail.provider.com") in the **Web Site** box.
- 5 In the **Action** list, click **Block**.
- 6 Click **Add**.

Allow access to a specific web site

Proceed as follows:

- 1 Browse to the Thomson Gateway GUI.
- 2 On the **Toolbox** menu, click **Parental Control**.
- 3 Make sure the **Use Address-Based Filter** check box is selected.
- 4 Type the URL of the Web site you want to allow (for example "netbanking.bank.com") in the **Web Site** box.
- 5 Click **Allow** in the **Action** list.
- 6 Click **Add**.

Redirect a web site

Proceed as follows:

- 1 Browse to the Thomson Gateway GUI.
- 2 On the **Toolbox** menu, click **Parental Control**.
- 3 Make sure the **Use Address-Based Filter** check box is selected.

- 4 Type the URL of the Web site you want to redirect (for example "cracks.am") in the **Web Site** box.
- 5 Click **Redirect** in the **Action** list.
- 6 Type the URL of the Web site you want to redirect to (for example "mycompany.com/internetpolicy.htm") in the **Redirect** box.
- 7 Click **Add**.

Redirect all web sites

Proceed as follows:

- 1 Browse to the Thomson Gateway GUI.
- 2 On the **Toolbox** menu, click **Parental Control**.
- 3 Make sure the **Use Address-Based Filter** check box is selected.
- 4 Type "*" in the **Web Site** box.
- 5 Click **Redirect** in the **Action list**.
- 6 Type the URL of the Web site you want to redirect to (for example "mycompany.com/internetpolicy.htm") in the **Redirect** box.
- 7 Click **Add**.

8 Internet Security

9 Troubleshooting

Introduction

This chapter suggests solutions for problems you may encounter while installing, configuring or using your Thomson Gateway.

If the suggestions do not resolve the problem, look at the support pages on www.thomson.net or contact your service provider.

Topics

This chapter describes the following topics:

Topic	Page
Setup Troubleshooting	80
General Thomson Gateway Troubleshooting	81
Voice over IP Troubleshooting	84
Reset to Factory Defaults	85

9.1 Setup Troubleshooting

The Setup CD does not start automatically

If your computer runs:

- Microsoft Windows:
 - 1 Click the Windows **Start** button.
 - 2 Click **Run**.
 - 3 In the **Open** field, type the following path: **D:\Setup.exe**, where D stands for the drive letter of your CD- or DVD-ROM drive.
- Mac OS X:
 - 1 On your desktop, double-click the CD icon.
 - 2 Double-click **Menu**.

Your Thomson Gateway has not been found

If you see this error during setup, make sure that:

- The Thomson Gateway is turned on and fully initialized.
- Your computer has a valid IP address, that is any address but 0.0.0.0. For more information, consult the help of your operating system.
- No dedicated firewall device or router is placed between your computer and the Thomson Gateway.
- No personal network security software (for example firewall software) is running on your computer.
- Your computer is correctly connected to the Thomson Gateway.

9.2 General Thomson Gateway Troubleshooting

None of the lights light up (Thomson Gateway does not work)

Make sure that:

- The Thomson Gateway is plugged into a power socket outlet.
- You are using the correct power supply for your Thomson Gateway device.



The power requirements for your Thomson Gateway are clearly indicated on the identification label of the Thomson Gateway. Only use the power adaptor supplied with your Thomson Gateway.

- The Thomson Gateway is turned on via the push button or rocker switch on the back panel.

The Broadband LED does not light up

Make sure that:

- The DSL cable is correctly connected. For more information, see “1.2 Installing your Thomson Gateway”.
- The DSL service is enabled on your telephone line. For more information, contact your Internet Service Provider.

The Internet LED does not light up

Make sure that your user name and password are correct.

Proceed as follows:

- 1 Browse to the Thomson Gateway GUI.
- 2 On the **Broadband** menu, click **Internet Services**.
- 3 Under **Internet**, click **View More**.
- 4 Check your user name
- 5 Re-enter your password.
- 6 Click **Connect**.

Thomson Gateway unreachable

If your Thomson Gateway cannot be reached, you might consider a hardware reset as described in “9.6 Reset to Factory Defaults” on page 85.

Poor Thomson Gateway performance

Make sure that the Thomson Gateway is installed and configured as instructed in “1 Installation” on page 3 or as instructed by the Service Provider.

9.3 Wired Connection Troubleshooting

Ethernet LED does not light up

Make sure that:

- The Ethernet cable is securely connected to the Ethernet port on your Thomson Gateway and your computer.
- You are using the correct cable type for your Ethernet equipment, that is UTP CAT5 with RJ-45 connectors.

9.4 Wireless Connection Troubleshooting

No Wireless Connectivity

Try the following:

- Change the wireless channel.
- Make sure that the wireless client is configured for the correct wireless settings (Network Name, security settings).
- Check the signal strength, indicated by the wireless client manager. If the signal is low, try repositioning the Thomson Gateway or directing the Thomson Gateway's antenna(s) for optimal performance.
- Make sure that the wireless client adapter is enabled (message like "radio on").

Poor Wireless Connectivity or Range

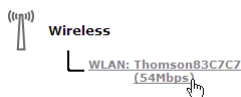
Try the following:

- Change the wireless channel.
- Check the signal strength, indicated by the wireless client manager. If the signal is low, try to place the Thomson Gateway or to direct the Thomson Gateway's antenna(s) for optimal performance.
- Use WPA(2)-PSK as encryption.
For more information, see "3.3 Securing Your Wireless Connection" on page 31.

Change the wireless channel

Proceed as follows:

- 1 Browse to the Thomson Gateway GUI.
- 2 On the left menu, click **Home Network**.
- 3 Under **Wireless**, click your access point.



Your access point will be listed in the following format: "WLAN:<Network Name> (<Actual Speed>)". For example, **WLAN: Thomson83C7C7 (54Mbps)**.

- 4 The **Wireless Access Point** page appears.
- 5 In the Navigation bar, click **Configure**.
- 6 Under **Configuration**, select the channel of your choice in the **Channel Selection** list.
- 7 Click **Apply**.

Can not connect via WPS

If you are having trouble connecting your wireless client via WPS, try to configure it manually. For more information, see "3.2 Connecting Your Wireless Client without WPS" on page 30.

9 Troubleshooting

9.5 Voice over IP Troubleshooting

Introduction

If you cannot make or receive any phone calls via your Thomson Gateway, try the suggestions in the following sections.

Calling over VoIP

If you have problems calling via VoIP, check whether:

- Your phone is correctly connected to the Thomson Gateway.
- Your phone is working on the traditional telephone network (PSTN):
 - ▶ Connect your phone directly to the telephone wall outlet.
 - ▶ Try to make a phone call.
- Your phone number, user name, and password are configured correctly.
- The registrar's and proxy server's IP address and port number are configured correctly.
- The **Power**, **Broadband/DSL** and **Voice** LEDs are on.

Calling over the traditional telephone network (PSTN)

If you have problems calling via the traditional telephone network, check whether:

- Your phone is correctly connected to the Thomson Gateway.



If the Thomson Gateway is turned off, phone calls are always routed over PSTN.

- Your phone is working on the PSTN network:
 - ▶ Connect your phone directly to PSTN.
 - ▶ Try to make a phone call.
- The Forced FXO service is activated, this means that your service provider may request you to dial an extra prefix for making calls via PSTN.

Problems with Telephony Services

If you have a problem with a service, check whether the service is activated. For more information, see "4.3.2 Activating a Telephony Service on your Thomson Gateway" on page 44.

9.6 Reset to Factory Defaults

Resetting your Thomson Gateway

If at some point you can no longer connect to the Thomson Gateway or you want to make a fresh install, it may be useful to perform a reset to factory defaults.

Warning

A reset to factory default settings deletes all configuration changes you made. Therefore, after the reset, a reconfiguration of your Thomson Gateway will be needed.

Also your wireless clients will have to be re-associated, as described in “3 Wireless Access” on page 27.

Methods

You can choose between:

- Resetting the Thomson Gateway via the Thomson Gateway GUI
- Reset the Thomson Gateway via the Reset button

Resetting the Thomson Gateway via the Thomson Gateway GUI

Proceed as follows:

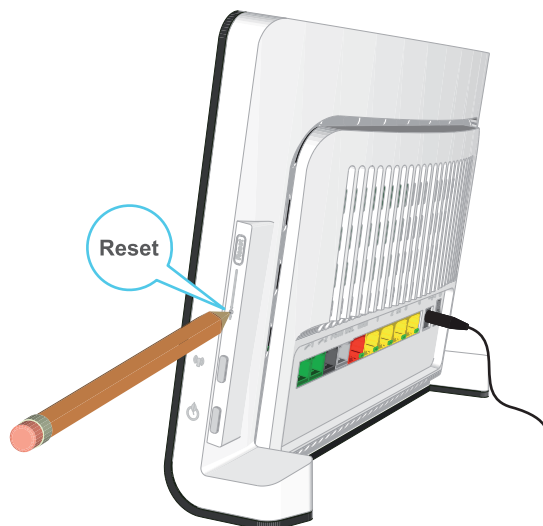
- 1 Browse to the Thomson Gateway GUI.
- 2 On the **Thomson Gateway** menu, click **Configuration**.
- 3 In the **Pick a task** list, click **Reset my Thomson Gateway**.
- 4 The Thomson Gateway restores the initial configuration and restarts.
- 5 The Thomson Gateway returns to the Thomson Gateway home page (unless the IP address of your computer is not in the same subnet as the default IP address of the Thomson Gateway, being 192.168.1.254).

9 Troubleshooting

Reset the Thomson Gateway via the Reset button

Proceed as follows:

- 1 Make sure the Thomson Gateway is turned on.
- 2 Push the **Reset** button until the **Power** LED lights red - this will take about 7 seconds.



- 3 Release the **Reset** button.
- 4 The Thomson Gateway restarts.



Your system administrator may have disabled the physical reset button of the Thomson Gateway. In this case, a hardware reset to defaults is not possible.

THOMSON Telecom Belgium

Prins Boudewijnlaan 47
2650 Edegem
Belgium

www.thomson.net

© THOMSON 2010. All rights reserved.
E-DOC-CTC-20080527-0012 v1.0.

THOMSON

THOMSON

EN	Safety Instructions and Regulatory Notices Read this document prior to installation!	3
FR	Consignes de Sécurité et Informations Réglementaires Lisez ce document avant d'effectuer l'installation!	9
DE	Sicherheitshinweise und Zulassungsbestimmungen Liest dieses Dokument vor Installation!	14
ES	Instrucciones de Seguridad e Información Sobre Regulaciones Lea este documento antes de proceder a la instalación!	19
PT	Instruções de Segurança e Informações Sobre Normas Leia este documento antes de iniciar a instalação!	24
IT	Precauzioni di Sicurezza e Informazioni Sulla Normativa Legger questo documento prima di eseguire l'installazione!	29
SV	Säkerhetsföreskrifter och -Information Läs säkerhetsföreskrifterna noggrant!	34
NL	Veiligheidsvoorschriften en Regelgevingsinformatie Gelieve dit document te lezen alvorens te starten met installatie!	39

SAFETY INSTRUCTIONS AND REGULATORY NOTICES

BEFORE YOU START INSTALLATION OR USE OF THIS PRODUCT, CAREFULLY READ THESE INSTRUCTIONS



When using this product, always follow the basic safety precautions to reduce the risk of fire, electric shock and injury to persons, including the following:

- > Always install the product as described in the documentation that is included with your product.
- > Avoid using this product during an electrical storm. There may be a remote risk of electric shock from lightning.
- > Do not use this product to report a gas leak in the vicinity of the leak.

Wireless

In case this product is equipped with a wireless transceiver, it uses Direct Sequence Spread Spectrum (DSSS) / Orthogonal Frequency Division Modulation (OFDM) radio technology. As such it is designed to be inter-operable with any other wireless DSSS/OFDM type product that:

- > Complies with the IEEE802.11b/IEEE802.11g/IEEE802.11n Standard on Wireless LANs, as defined and approved by the Institute of Electrical and Electronics Engineers.
- > Is Wi-Fi® CERTIFIED™ as defined by the Wi-Fi® Alliance.

Directive

Unless express and prior approval by THOMSON in writing, you may not:

- > Disassemble, de-compile, reverse engineer, trace or otherwise analyse the equipment, its content, operation, or functionality, or otherwise attempt to derive source code (or the underlying ideas, algorithms, structure or organization) from the equipment, or from any other information provided by THOMSON, except to the extent that this restriction is expressly prohibited by local law;
- > Copy, rent, loan, re-sell, sub-license, or otherwise transfer or distribute the equipment to others;
- > Modify, adapt or create a derivative work of the equipment;
- > Remove from any copies of the equipment any product identification, copyright or other notices;
- > Disseminate performance information or analysis (including, without limitation, benchmarks) from any source relating to the equipment.

Such acts not expressly approved by THOMSON will result in the loss of product warranty and may invalidate the user's authority to operate this equipment in accordance with FCC Rules.

THOMSON disclaims all responsibility in the event of use that does not comply with the present instructions.

Environmental information - WEEE directive



This symbol means that your inoperative electronic appliance must be collected separately and not mixed with the household waste. The European Union has implemented a specific collection and recycling system for which producers are responsible.

This appliance has been designed and manufactured with high quality materials and components that can be recycled and reused.

Electrical and electronic appliances are liable to contain parts that are necessary in order for the system to work properly but which can become a health and environmental hazard if they are not handled or disposed of in the proper way. Consequently, please do not throw out your inoperative appliance with the household waste.

If you are the owner of the appliance, you must deposit it at the appropriate local collection point or leave it with the vendor when buying a new appliance.

- > If you are a professional user, please follow your supplier's instructions.
- > If the appliance is rented to you or left in your care, please contact your service provider.

Please help us protect the environment in which we live!

Safety Instructions

Climatic conditions

This product:

- > Is intended for in-house stationary desktop use; the maximum ambient temperature may not exceed 40°C (104°F).
- > Must not be mounted in a location exposed to direct or excessive solar and/or heat radiation.
- > Must not be exposed to heat trap conditions and must not be subjected to water or condensation.
- > Must be installed in a Pollution Degree 2 environment (Environment where there is no pollution or only dry, nonconductive pollution).

Cleaning

Unplug this product from the wall socket and computer before cleaning. Do not use liquid cleaners or aerosol cleaners. Use a damp cloth for cleaning.

Water and moisture

Do not use this product near water, for example, near a bathtub, washbowl, kitchen sink, laundry tub, in a wet basement or near a swimming pool. Transition of the product from a cold environment to a hot one, may cause condensation on some of its internal parts. Allow it to dry by itself before re-starting the product.

Interface classifications

The external interfaces on the rear panel of the product are classified as follows:

- > DSL, ADSL, SHDSL, VDSL, Line: TNV circuit, subjected to over voltages (TNV-3)
- > ISDN: SELV circuit
- > PSTN, FXO: TNV circuit, subjected to over voltages (TNV-3)

- > Phone, VoIP, FXS: TNV circuit, not subjected to over voltages (TNV-2)



WARNING

- > The Phone, VoIP, FXS port will be classified as a **TNV-3** circuit when connected internally to the PSTN, FXO port, for example, when the device is powered off.
- > If the product is equipped with a USB interface (slave and/or master) or any type of connector with metallic shielding, then it is not allowed to connect the Phone, VoIP, FXS port with the PSTN, FXO or the DSL, ADSL, SHDSL, VDSL, Line port by any means, for example with an external telephone cable.
- > All other interface ports (e.g. Ethernet, 10/100Base-T/MDI(-X), USB, Console, Craft, etc.), including the low voltage power input from the AC mains power supply: SELV circuits.

Electrical powering

The powering of the product must adhere to the power specifications indicated on the marking labels.

The power supply must be Class II and a Limited Power Source in accordance with the requirements of IEC60950-1/EN60950-1, Clause 2.5 and rated as indicated on the label on your product. It must be tested and approved to national or local standards.

For US and Canada: This product is intended to be supplied by a Listed Direct Plug-in, or Desktop Power Unit marked "Class 2" and rated as indicated on the label on your product.

The use of other types of supplies is prohibited. If you are not sure of the type of power supply needed, consult the product's user documentation or contact your local product dealer.

ISDN



WARNING

For US and Canada: Do not use the ISDN port; do not attempt to connect this port to the network at anytime.

USB

The device is to be connected to an identified USB port complying with the requirements of a Limited Power Source.

Telephone cable



CAUTION

To reduce the risk of fire, use only No 26 AWG wire size or larger telecommunication line cord.

Connect the telecommunication line cord only in the PSTN, FXO, DSL, ADSL, SHDSL, VDSL or Line port of the product. Never plug the telecommunication line cord in another receptacle of the product.

Follow the installation instructions in the sequence as outlined in the installation guide.

Central splitter / distributed filter(s) (if applicable)

If telephone service is required on the same line, a central splitter or distributed filter(s) must be installed for optimal DSL performance.

Depending on your DSL configuration and type of splitter / filters, installation must be carried out by qualified service personnel. Consult your telephone service company or DSL service provider for instructions.

Accessibility

The Direct Plug-in power supply, or the plug on the power supply cord serves as disconnect device. Be sure that the power socket outlet you plug the power supply into is easily accessible and located as close to the equipment as possible.

Overloading

Do not overload mains supply socket outlets and extension cords as this increases the risk of fire or electric shock.

Servicing

To reduce the risk of electric shock, do not disassemble this product. None of its internal parts are user-replaceable; therefore, there is no reason to access the interior. Opening or removing covers may expose you to dangerous voltages. Incorrect reassembly could cause electric shock if the appliance is subsequently used.

If service or repair work is required, take it to a qualified service dealer.

Damage requiring service

Unplug this product from the wall outlet and refer servicing to qualified service personnel under the following conditions:

- > When the power supply or its plug are damaged.
- > When the attached cords are damaged or frayed.
- > If liquid has been spilled into the product.
- > If the product has been exposed to rain or water.
- > If the product does not operate normally.
- > If the product has been dropped or damaged in any way.
- > There are noticeable signs of overheating.
- > If the product exhibits a distinct change in performance.

Immediately disconnect the product if you notice it giving off a smell of burning or smoke. Under no circumstances must you open the equipment yourself; you run the risk of electrocution.

Regulatory Information

You must install and use this device in strict accordance with the manufacturer's instructions as described in the user documentation that is included with your product.

Before you start installation or use of this product, carefully read the contents of this document for device specific constraints or rules that may apply in the country where you want to use this product.

In some situations or environments, the use of wireless devices may be restricted by the proprietor of the building or responsible representatives of the organization.

If you are uncertain of the policy that applies on the use of wireless equipment in a specific organization or environment (e.g. airports), you are encouraged to ask for authorization to use this device prior to turning on the equipment.

THOMSON is not responsible for any radio or television interference caused by unauthorized modification of the device, or the substitution or attachment of connecting cables and equipment other than specified by THOMSON. The correction of interference caused by such unauthorized modification, substitution or attachment will be the responsibility of the user.

THOMSON and its authorized resellers or distributors are not liable for any damage or violation of government regulations that may arise from failing to comply with these guidelines.

Europe - European Union

European Community Declaration of Conformity



Hereby, THOMSON, declares that this product is in compliance with the essential requirements and other relevant provisions of Directive 1999/5/EC of the European Parliament and of the Council.

This equipment can be used in all countries that are member of the European Union and that are member of the European Free Trade Association.

The Declaration of Conformity can be found on www.thomson-broadband.com.

In case this product is equipped with a wireless transceiver:

- > it is restricted to indoor use only.
- > it complies with the basic restrictions and limits as defined in the European Council Recommendation (1999/519/EC) on the limitation of exposure of the general public to Electromagnetic fields.

North-America - Canada

Notification of Canadian Radio Frequency Interference Statement

This Class B digital apparatus complies with Canadian ICES-003.

NOTICE: This product meets the applicable Industry Canada technical specifications.

NOTICE: The Ringer Equivalence Number (REN) for this terminal equipment is 0.1. The REN is an indication of the maximum number of devices allowed to be connected to a telephone interface. The termination on an interface may consist of any combination of devices subject only to the requirement that the sum of the RENs of all the devices does not exceed five.

Canada - Industry Canada (IC)

In case this product is equipped with an IEEE802.11b/IEEE802.11g/IEEE802.11n wireless transceiver, complying with RSS 210 and/or RSS 213 of Industry Canada, operation is subject to the following two conditions:

- 1 This device may not cause harmful interference.
- 2 This device must accept any interference received, including interference that may cause undesired operation of the device.



IMPORTANT NOTE: Radiation Exposure Statement

This equipment complies with IC radiation exposure limits set forth for an uncontrolled environment. This equipment should be installed and operated with minimum distance 20cm between the radiator and your body.

Restricted Frequency Band

In case this product is equipped with an IEEE802.11b/IEEE802.11g/IEEE802.11n wireless transceiver, it only uses channels 1 to 11 (2412 to 2462 MHz) on Canada territory.

North-America - United States of America

Federal Communications Commission (FCC) Radio Frequency Interference Statement



This device has been tested and found to comply with the limits for a Class B digital device, pursuant to Part 15 of the FCC Rules. These limits are designed to provide reasonable protection against such interference in a residential installation.

This equipment generates, uses and can radiate radio frequency energy. Operation is subject to the following two conditions:

- 1 This device may not cause harmful interference, and
- 2 This device must accept any interference received, including interference that may cause undesired operation.

If not installed and used in accordance with the instructions, it may cause harmful interference to radio communications. However, there is no guarantee that interference will not occur in a particular installation. If this equipment does cause harmful interference to radio or television reception, which can be determined by turning the equipment ON and OFF, the user is encouraged to try to correct the interference by one or more of the following measures:

- > Reorient or relocate the receiving antenna.
- > Increase the separation between the equipment and receiver.
- > Connect the equipment into an outlet on a circuit different from that to which the receiver is connected.
- > Consult the dealer or an experienced radio/television technician for help.

The FCC requires the user to be notified that any changes or modifications to this device that are not expressly approved by THOMSON may void the user's authority to operate the equipment.

Responsible Party: THOMSON Inc., 10330 North Meridian Street, Indianapolis, IN 46290 USA, (580) 634-0151.

This equipment complies with Part 68 of the FCC Rules.

The customer information required for Telephone Terminal Equipment ("TTE") approved for connection to the Public Switched Telephone Network ("PSTN"), pursuant to 47 CFR §68.218(b)(1) can be found at www.thomson-broadband.com.

RF-Exposure Statement

When the product is equipped with a wireless interface, then it becomes a mobile or fixed mounted modular transmitter and must have a separation distance of at least 20cm between the antenna and the body of the user or nearby persons. In practice, this means that the user or nearby persons must have a distance of at least 20cm from the modem and must not lean on the modem in case it is wall-mounted.

With a separation distance of 20cm or more, the M(aximum) P(ermissible) E(xposure) limits are well above the potential this module is capable to produce.

The transmitter shall not be collocated with other transmitters or antennas.

Restricted Frequency Band

In case this product is equipped with an IEEE802.11b/IEEE802.11g/IEEE802.11n wireless transceiver, it may only use channels 1 to 11 (2412 to 2462 MHz) on U.S.A. territory.

CONSIGNES DE SÉCURITÉ ET INFORMATIONS RÉGLEMENTAIRES

AVANT D'INSTALLER OU D'UTILISER LE PRODUIT, LISEZ ATTENTIVEMENT CES INSTRUCTIONS



Afin d'éviter tout risque d'incendie, de choc électrique et de blessure corporelle, il convient d'utiliser le produit conformément aux mesures de sécurité de base, parmi lesquelles les suivantes:

- > Respectez toujours les instructions d'installation détaillées dans la documentation accompagnant le produit.
- > Évitez de connecter ou d'utiliser ce produit en cas d'orage. La foudre peut provoquer un faible risque de choc électrique.
- > N'utilisez pas le produit pour signaler une fuite de gaz à proximité de cette fuite.

Réseau sans fil

Si le produit est équipé d'un émetteur-récepteur sans fil IEEE802.11b/IEEE802.11g/IEEE802.11n, il utilise la technologie radio DSSS (Modulation du spectre à séquence directe) / OFDM (Multiplexage par répartition orthogonale de la fréquence). En tant que tel, il est étudié pour fonctionner sans problèmes avec n'importe quel autre produit sans fils supportant la norme DSSS/OFDM qui:

- > est conforme à la norme IEEE 802.11b/IEEE802.11g/IEEE802.11n relative aux réseaux locaux sans fil, telle que définie et approuvée par l'IEEE (Institute of Electrical and Electronics Engineers).
- > est certifié Wi-Fi® CERTIFIED™ par l'Alliance Wi-Fi®.

Consignes à respecter

Sauf accord écrit explicite et préalable de THOMSON, vous ne pouvez pas:

- > démonter, décompiler, décomposer, examiner ou analyser de quelque manière que ce soit l'appareil, son contenu, son fonctionnement ou ses fonctionnalités, ni tenter de copier le code source (ou les concepts sous-jacents, les algorithmes, la structure ou l'organisation) de l'appareil, ou de toute autre information fournie par THOMSON, sauf si cette restriction est expressément interdite par la législation locale;
- > copier, louer, prêter, revendre, mettre sous licence, ni transférer ou distribuer l'appareil à des tiers;
- > modifier, adapter ou créer un dérivé de l'appareil;
- > retirer de l'appareil l'identification du produit, les droits d'auteur ou toute autre notification;
- > diffuser des informations ou analyses relatives aux performances de l'appareil (y compris et sans restriction, les tests de performance) quelle que soit la source d'information.

Ces actes, réalisés sans l'accord explicite de THOMSON, entraînent la perte de la garantie du produit et enlèvent à l'utilisateur le droit d'employer l'équipement.

THOMSON rejette toute responsabilité en cas d'utilisation de l'équipement non conforme aux présentes instructions.

Environnement - Directive DEEE (WEEE)



Ce symbole signifie que votre appareil électronique hors d'usage doit être collecté séparément et non jeté avec les déchets ménagers. Dans ce but, l'Union Européenne a institué un système de collecte et de recyclage spécifique dont les producteurs ont la responsabilité.

Cet appareil a été conçu et fabriqué avec des matériaux et des composants de haute qualité pouvant être recyclés et réutilisés.

Les appareils électriques et électroniques sont susceptibles de contenir des éléments qui, bien qu'indispensables au bon fonctionnement du système, peuvent s'avérer dangereux pour la santé et l'environnement s'ils sont manipulés ou éliminés de manière incorrecte. Par conséquent, veuillez ne pas jeter votre appareil usagé avec les ordures ménagères.

Si vous êtes propriétaire de l'appareil, vous devez le déposer au point de collecte local approprié ou le remettre à votre vendeur contre l'achat d'un produit neuf.

- > Si vous êtes un utilisateur professionnel, référez vous aux instructions de votre fournisseur.
- > Si l'appareil vous est loué ou remis en dépôt, contactez votre fournisseur de service.

Aidez-nous à préserver l'environnement dans lequel nous vivons !

Consignes de sécurité

Conditions climatiques

Ce produit:

- > est conçu pour une utilisation fixe dans un bureau à une température ambiante maximale de 40°C (104°F).
- > ne doit pas être installé dans un endroit exposé au rayonnement direct et excessif du soleil et/ou à des radiations de chaleur.
- > ne doit pas être mis dans des conditions d'accumulation de chaleur et ne doit pas être soumis à l'humidité ou la condensation.
- > doit être installé dans un environnement présentant un degré de pollution 2 (environnement exempt de pollution ou avec une pollution sèche, non conductrice).

Nettoyage

Débranchez l'appareil de la prise murale et de l'ordinateur avant de le nettoyer. N'utilisez pas de détergents liquides ou d'aérosols. Nettoyez-le avec un chiffon humide.

Eau et humidité

N'utilisez pas ce produit à proximité d'une arrivée d'eau, par exemple près d'une baignoire, d'un lavabo, d'un évier, d'une machine à laver, dans un sous-sol humide ou près d'une piscine. Le transfert de ce produit d'un environnement froid vers un environnement chaud peut entraîner l'apparition de condensation sur certaines parties internes. Laissez l'appareil sécher avant de le remettre en marche.

Classification des interfaces

Les interfaces externes situées sur le panneau arrière du produit sont spécifiées comme suit:

- > DSL, ADSL, SHDSL, VDSL, Line: circuit TRT, sujet à des surtensions (TRT-3)
- > ISDN: circuit TBTS
- > PSTN, FXO: circuit TRT, sujet à des surtensions (TRT-3)

- > Phone, VoIP, FXS: circuit TRT, non sujet à des surtensions (TRT-2)



AVERTISSEMENT

- > Le port Phone, VoIP, FXS sera classifié comme un circuit **TRT-3** lorsqu'il est raccordé en interne au port PSTN, FXO, par exemple, lorsque le périphérique est mis hors tension.
 - > Si le produit est équipé d'une interface USB (esclave et/ou maître) ou d'un autre type de connecteur avec un blindage métallique, il est interdit de relier le port Phone, VoIP, FXS au port PSTN, FXO ou au port DSL, ADSL, SHDSL, VDSL, Line par un moyen quelconque, par exemple, à l'aide d'un câble téléphonique externe.
- > Tous les autres ports d'interface (par exemple, Ethernet, 10/100Base-T/MDI(-X), USB, Console, Craft, etc.), y compris l'entrée d'alimentation basse tension depuis l'alimentation du réseau: circuits TBTS.

Alimentation électrique

L'alimentation du produit doit respecter les spécifications en matière d'alimentation figurant sur les étiquettes.

L'alimentation doit être de classe II, être une source à puissance limitée conformément aux exigences de la norme CEI60950-1/ EN60950-1, clause 2.5, aux caractéristiques nominales comme indiquées sur l'étiquette fixée sur le produit. Elle doit être testée et répondre aux normes nationales ou locales.

Pour le Canada : Ce produit est destiné à être utilisé avec une alimentation directement enfichable, ou module de bureau et cataloguée de classe 2 aux caractéristiques nominales comme indiquées sur l'étiquette fixée sur le produit. L'utilisation d'autres types de sources d'énergie est interdite. Si vous n'êtes pas certain du type d'alimentation nécessaire, veuillez consulter la documentation fournie avec le produit ou contacter votre revendeur local.

ISDN



Avertissement !

Pour le Canada : N'utilisez pas le port ISDN et n'essayez jamais de connecter ce port au réseau.

USB

L'appareil doit être connecté à un port USB identifié qui réponde aux besoins d'une source à puissance limitée.

Câble téléphonique



ATTENTION

Pour réduire les risques d'incendie, utilisez uniquement des conducteurs de télécommunications 26 AWG ou de section supérieure.

Connectez uniquement le câble téléphonique dans la prise PSTN, FXO, DSL, ADSL, SHDSL, VDSL ou Line du produit. Ne le branchez jamais dans une autre prise du produit.

Suivez la procédure pour connecter les câbles au produit en suivant la séquence décrite dans le guide d'installation.

Répartiteur central / filtre(s) distribués (le cas échéant)

Si les signaux téléphoniques doivent arriver sur la même ligne, un répartiteur central ou un (des) filtre(s) distribué(s) doivent être installés pour garantir une performance DSL optimale.

Selon votre configuration DSL et le type de répartiteur/filtres, l'installation doit être effectuée par un membre du personnel d'entretien qualifié. Consultez votre opérateur de télécommunications ou votre fournisseur de service DSL pour obtenir des instructions.

Accessibilité

L'alimentation enfichable directement ou la fiche de prise de courant du câble d'alimentation aussi de système de déconnexion. Assurez-vous donc que le socle de la prise dans laquelle vous branchez le cordon d'alimentation est facilement accessible, et est située le plus près possible de l'équipement.

Surcharge

Ne surchargez pas les socles des prises du réseau d'alimentation ni les rallonges car ceci augmente les risques d'incendie et de choc électrique.

Entretien

Pour réduire les risques de choc électrique, ne démontez pas ce produit. Aucune de ses pièces internes ne peut être remplacée par un non-professionnel; il n'y a dès lors pas de raison de l'ouvrir. L'ouverture ou le retrait des couvercles peut vous exposer à des tensions dangereuses. Un remontage incorrect peut entraîner un choc électrique lors de l'utilisation suivante.

Si votre appareil doit être réparé ou révisé, confiez-le à un distributeur agréé.

Détérioration nécessitant une intervention

Débranchez ce produit de la prise murale et faites effectuer la réparation par un service après-vente qualifié dans les cas suivants:

- > Si l'alimentation ou sa fiche sont endommagées.
- > Si un des câbles fournis est endommagé ou effiloché.
- > Si vous avez renversé du liquide dans le produit.
- > Si le produit a été exposé à la pluie ou à de l'eau.
- > Si le produit ne fonctionne pas normalement.
- > Si le produit est tombé ou a été endommagé d'une façon quelconque.
- > S'il y a un signe perceptible de surchauffe.
- > Si le produit présente des variations importantes au niveau des performances.

Débranchez immédiatement le produit si vous remarquez qu'il s'en dégage une odeur de brûlé ou de la fumée. Vous ne devez en aucun cas ouvrir l'appareil vous-même car vous risquez d'être électrocuté.

Avis réglementaire

L'appareil doit être installé et utilisé en stricte conformité avec les instructions du fabricant, énoncées dans la documentation accompagnant le produit.

Avant d'installer ou d'utiliser le produit, lisez attentivement ce document afin de prendre connaissance des restrictions spécifiques à l'appareil ou des règles en vigueur dans le pays où vous comptez l'utiliser.

Dans certains environnements ou circonstances, l'emploi de dispositifs sans fil peut être prohibé par le propriétaire du bâtiment ou les représentants responsables de l'organisation concernée.

En cas de doute quant à la politique s'appliquant à l'utilisation d'équipements sans fil dans une organisation ou un environnement spécifique (par exemple dans les aéroports), il est recommandé de demander la permission d'utiliser l'appareil avant de l'allumer.

THOMSON n'est pas responsable des interférences avec les postes de radio ou de télévision susceptibles de survenir à la suite d'une modification non autorisée de l'appareil ou du remplacement ou de la connexion de câbles et d'équipements non agréés par THOMSON. C'est par conséquent à l'utilisateur qu'il incombe de remédier aux interférences causées par de telles manipulations.

THOMSON et ses revendeurs et distributeurs agréés déclinent toute responsabilité quant aux dommages ou violation des réglementations nationales découlant du non-respect de ces instructions.

Europe – l'Union Européenne

Déclaration de conformité pour la Communauté Européenne



Par la présente THOMSON déclare que l'appareil est conforme aux exigences essentielles et aux autres dispositions pertinentes de la Directive 1999/5/CE du Parlement européen et du Conseil.

Ce produit peut être utilisé dans les pays membres de l'Union Européenne et de l'Association Européenne de Libre Échange.

Vous pouvez trouver la déclaration de conformité sur le site www.thomson-broadband.com.

Dans le cas où ce produit est équipé d'un récepteur sans fil IEEE802.11b/IEEE802.11g/IEEE802.11n:

- > son usage est limité à l'intérieur d'un bâtiment.
- > il est conforme aux restrictions et limites telles que définies par la recommandation (1999/519/CE) du conseil Européen relative à la limitation de l'exposition du public aux champs électromagnétiques.

Amérique du Nord – Canada

Déclaration Canadienne d'interférence de Fréquence Radio.

Cet appareil numérique de Classe B est conforme à la norme canadienne NMB-003.

NOTE: Le présent matériel est conforme aux spécifications techniques applicables d'Industrie Canada.

NOTE: L'indice d'équivalence de la sonnerie (IES) sert à indiquer le nombre maximal de terminaux qui peuvent être raccordés à une interface téléphonique. La terminaison d'une interface peut consister en une combinaison quelconque de dispositifs, à la seule condition que la somme d'indices d'équivalence de la sonnerie de tous les dispositifs n'excède pas 5.

Canada - Industrie Canada (IC)

Si le produit est équipé d'un émetteur-récepteur sans fil IEEE802.11b/IEEE802.11g/IEEE802.11n, il est conforme à la norme RSS-210 et/ou RSS-213 de Industrie Canada. L'utilisation de ce dispositif est autorisée seulement aux deux conditions suivant:

- 1 il ne doit pas produire de brouillage, et
- 2 l'utilisateur du dispositif doit être prêt à accepter tout brouillage radioélectrique reçu, même si ce brouillage est susceptible de compromettre le fonctionnement du dispositif



Notice Importante: Avis radiation énoncées

Cet équipement se conforme avec les limites d'exposition aux radiations énoncées pour un environnement incontrôlé. Il doit être installé et opéré avec une distance minimale de 20 cm entre la source de radiation et votre corps.

Bande de fréquence restreinte

Si le produit est équipé d'un émetteur-récepteur sans fil IEEE802.11b/IEEE802.11g/IEEE802.11n, il utilise uniquement les canaux 1 à 11 (2 412 à 2 462 MHz) sur le territoire canadien.

SICHERHEITSHINWEISE UND ZULASSUNGSBESTIMMUNGEN

LESEN SIE VOR BEGINN DER INSTALLATION ODER DES GEBRAUCHS DIESES PRODUKTES AUFMERKSAM DIESE ANWEISUNGEN



Befolgen Sie beim Gebrauch dieses Produktes stets die grundlegenden Sicherheitsmaßnahmen, um das Risiko von Feuer, elektrischem Schlag und Verletzung von Personen zu reduzieren, einschließlich folgendem:

- > Installieren Sie das Produkt stets wie in der Ihrem Produkt beiliegenden Dokumentation beschrieben.
- > Vermeiden Sie den Gebrauch dieses Produktes während eines Gewitters. Es besteht das entfernte Risiko eines Stromschlags durch Blitzeinschlag.
- > Gebrauchen Sie dieses Produkt nicht zur Meldung von ausströmendem Gas in der Nähe der Ausströmungsstelle.

Drahtloses LAN

Wenn dieses Produkt mit einem kabellosen Transceiver ausgestattet ist, wird die Funktechnik DSSS (Direct Sequence Spread Spectrum)/OFDM (Orthogonal Frequency Division Modulation) eingesetzt. Demzufolge ist es für eine Interoperabilität mit anderen drahtlosen DSSS/OFDM-Produkten konstruiert, die:

- > dem vom Institute of Electrical and Electronics Engineers festgelegten und genehmigten IEEE802.11b/IEEE802.11g/IEEE802.11n-Standard für drahtlose LANs entsprechen.
- > gemäß den Vorschriften von Wi-Fi®-Alliance Wi-Fi® CERTIFIED™ (zertifiziert) wurden.

Richtlinien

Sofern nicht ausdrücklich und eindeutig in schriftlicher Form von THOMSON erlaubt, ist es nicht gestattet:

- > das Gerät zu demontieren, seinen Inhalt auseinanderzunehmen, die Betriebsweise oder Funktionalität nachzubauen, nachzupfinden oder auf eine andere Weise zu analysieren, oder zu versuchen, den Quellcode (oder die zu Grunde liegenden Ideen, Algorithmen, Strukturen oder Organisationen) vom Gerät, oder von jeglichen anderen von THOMSON gelieferten Informationen abzuleiten, es sei denn, das es das anwendbare Recht ungeachtet dieser Einschränkung ausdrücklich gestattet;
- > eine Kopie des Geräts zu erstellen, das Gerät an Dritte zu vermieten, zu verleihen, wiederzuverkaufen, zu lizenzieren oder auf andere Weise weiterzuvermitteln oder zu vertreiben;
- > das Gerät zu modifizieren, anzupassen oder einen Nachbau davon anzufertigen;
- > die Produktkennung, Copyright-Informationen oder andere Hinweise von Exemplaren dieses Geräts zu entfernen;
- > aus jedwelchen Quellen zum Gerät stammende Leistungsdaten oder -analysen zu verbreiten (einschließlich Benchmarks, ohne jede Einschränkung).

Bei Zuwiderhandlung ist mit dem Verlust des Gewährleistungsschutzes und der Betriebserlaubnis zu rechnen. THOMSON übernimmt keinerlei Haftung, wenn das Gerät nicht gemäß der vorliegenden Betriebsanleitung verwendet wird.

Umweltschutzinformationen (WEEE-Richtlinie)



Dieses Symbol bedeutet, dass Ihr nicht mehr betriebsfähiges Elektrogerät separat gesammelt wird und nicht mit dem Hausmüll entsorgt werden darf. Die Europäische Union hat diesbezüglich ein Sammel- und Recyclingsystem entworfen, in dem die Hersteller auch zu Entsorgern werden.

Dieses Gerät wurde mit hochwertigen Materialien und Komponenten gebaut, die recycelt und wiederverwertet werden können.

Elektrische und elektronische Geräte beinhalten Komponenten, die wohl für den ordnungsgemäßen Betrieb erforderlich sind, sich jedoch als gesundheits- und umweltschädlich zeigen, wenn sie unsachgemäß gehandhabt oder entsorgt werden. Bitte aus diesem Grund Ihr Altgerät nicht im Hausmüll entsorgen.

Wenn Sie Besitzer des Gerätes sind, dann dieses bitte an die spezifische Sondermüllsammelstelle bringen oder das Gerät bei Neukauf Ihrem Fachhändler übergeben.

- > Falls Sie das Gerät gewerblich nutzen, bitte die Herstelleranweisungen befolgen.
- > Falls Sie das Gerät in Leasing oder als Depotware hatten, bitte Ihren Vertragshändler kontaktieren.

Helfen Sie uns unsere Umwelt zu schützen!

Anweisungen zur Sicherheit

Klimatische Bedingungen

Dieses Produkt:

- > Wurde entwickelt für stationärer Einsatz auf dem Schreibtisch in Innenräumen; die maximale Raumtemperatur darf 40°C (104°F) nicht überschreiten.
- > Darf keiner direkten oder übermäßigen Sonneneinstrahlung und/oder Hitze ausgesetzt werden.
- > Darf keinen Hitzestaus ausgesetzt werden und nicht mit Wasser oder Kondenswasser in Berührung kommen.
- > Muß einer Umgebung die den Verschmutzungsgrad 2 nicht überschreitet ausgesetzt werden (Die Umgebung muß frei von Verschmutzungen sein oder darf höchstens trockene, nicht leitende Verschmutzungseigenschaften aufweisen).

Reinigung

Trennen Sie das Gerät vor der Reinigung von der Steckdose und vom Computer. Verwenden Sie keine flüssigen Reinigungsmittel oder Sprühreiniger. Reinigen Sie das Gerät mit einem feuchten Tuch.

Wasser und Feuchtigkeit

Verwenden Sie das Gerät nicht in der Nähe von Wasser, wie beispielsweise einer Badewanne, Wasserschüssel, Spüle, einer Waschmaschine, in einem feuchten Keller oder in der Nähe eines Schwimmbeckens. Beim Transport von einer kalten in eine sehr warme Umgebung kann sich im Inneren des Geräts Kondenswasser bilden. Lassen Sie das Gerät von selbst trocknen, ehe Sie es einschalten.

Schnittstellenklassifizierungen

Die externen Schnittstellen an der Rückseite des Geräts werden wie folgt klassifiziert:

- > DSL, ADSL, SHDSL, VDSL, Line: TNV-Schaltkreis, unterliegt Überspannungen (TNV-3)
- > ISDN: SELV-Schaltkreis
- > PSTN, FXO: TNV-Schaltkreis, unterliegt Überspannungen (TNV-3)

- > Phone, VoIP, FXS: TNV-Schaltkreis, unterliegt keinen Überspannungen (TNV-2)



WARNUNG

- > Der Phone-/VoIP-/FXS-Anschluss, wird als **TNV-3**-Schaltkreis klassifiziert, wenn er intern mit dem PSTN-/FXO-Anschluss verbunden ist, zum Beispiel, wenn das Gerät abgeschaltet ist.
- > Ist das Produkt mit einer USB-Schnittstelle (Slave und/oder Master) oder einem Anschlusstyp mit metallischer Abschirmung ausgestattet, darf der Phone-/VoIP-/FXS-Anschluss auf keine Weise, auch nicht mit einem externen Telefonkabel, mit dem PSTN-/FXO-, oder DSL-, ADSL-, SHDSL-, VDSL-, Line-Anschluss verbunden werden.
- > Alle anderen Schnittstellenports (z. B. Ethernet, 10/100Base-T/MDI(-X), USB, Console, Craft usw.), einschließlich der Niederspannungszufuhr durch das Netzteil (AC): SELV-Schaltkreise.

Stromversorgung

Die auf dem Typenschild des Geräts angegebene Netzspannung muß mit der Ihres Stromnetzes übereinstimmen. Das Gerät ist mit der Versorgungsspannung wie angegeben auf dem Etikett auf das Produkt zu betreiben. Die Stromversorgung muß gemäß IEC60950-1/ EN60950-1, Abschnitt 2.5, der Klasse II entsprechen, aus einer begrenzten Stromquelle stammen und den nationalen bzw. lokalen Standards entsprechen.

Die Verwendung anderer Energieversorgungsarten ist nicht gestattet. Falls Sie sich nicht sicher sind, ob Sie über die geeignete Stromversorgung verfügen, beziehen Sie sich bitte auf die mit dem Gerät gelieferten Unterlagen, oder wenden Sie sich an Ihren örtlichen Händler.

USB

Das Gerät muß an ein identifiziertes USB-Port angeschlossen werden, das die Anforderungen für eine begrenzten Stromquelle erfüllt.

Telefonkabel



ACHTUNG: Um das Brandrisiko zu minimieren, sollten Sie nur Kabel des Typs 26 AWG oder noch leistungsfähigere Telefonkabel verwenden.

Schließen Sie das Telefonkabel nur an die Steckbuchsen PSTN, FXO, DSL, ADSL, SHDSL, VDSL, oder Line, des Geräts an. Stecken Sie das Telefonkabel niemals in andere Anschlüsse am Gerät ein.

Befolgen Sie die Anweisungen zum anschließen des Produktes in der gleichen Reihenfolge wie angegeben im Installationshandbuch.

Zentraler Verteiler/verteilte Filter (falls vorhanden)

Wenn auf derselben Leitung auch das Telefon verwendet werden soll, müssen ein zentraler Verteiler oder ein bzw. mehrere verteilte Filter installiert werden, um die optimale DSL-Leistung zu erzielen.

Je nach DSL-Konfiguration und verwendetem Verteiler- bzw. Filtertyp muß die Installation von qualifizierten Fachkräften durchgeführt werden. Wenden Sie sich an Ihre Telefongesellschaft oder Ihren DSL-Anbieter, um genauere Anweisungen zu erhalten.

Zugang

Das Direct Plug-In-Netzteil dient als Verbindungstrenner. Achten Sie darauf, das die Netzsteckdose, an die Sie das Netzteil anschließen, leicht zugänglich ist und sich möglichst nah beim Gerät befindet.

Überlastung

Vermeiden Sie eine Überlastung der Hauptsteckdosen mit Mehrfachsteckern und Verlängerungskabeln. Dies erhöht die Brandgefahr und das Risiko von Stromschlägen.

Kundendienst

Um das Risiko von Stromschlägen zu verringern, sollten Sie dieses Gerät nicht auseinandernehmen. Keines der inneren Teile kann vom Benutzer ausgetauscht werden, daher besteht keine Veranlassung, das Gerät zu öffnen. Beim Öffnen des Geräts oder Entfernen der Abdeckungen können Sie sich gefährlichen Spannungen aussetzen. Wird das Gerät fehlerhaft zusammengebaut, besteht beim anschließenden Einschalten des Geräts die Gefahr von Stromschlägen.

Wenn Wartungs- oder Reparaturarbeiten erforderlich sind, bringen Sie das Gerät zu einem qualifizierten Servicehändler.

Fehlerbehebung

Trennen Sie das Gerät von der Steckdose, und überlassen Sie die Arbeiten qualifiziertem Kundendienstpersonal, wenn eines der folgenden Probleme auftritt:

- > Das Netzteil oder der Netzstecker sind beschädigt.
- > Die angeschlossenen Netzkabel sind beschädigt oder abgenutzt.
- > In das Gerät ist Flüssigkeit eingedrungen.
- > Das Gerät war Regen oder Wasser ausgesetzt.
- > Das Gerät funktioniert nicht ordnungsgemäß.
- > Das Gerät wurde fallengelassen oder in anderer Weise beschädigt.
- > Das Gerät weist Zeichen von Überhitzung auf.
- > Das Gerät weist eine erheblich veränderte Leistung auf.

Trennen Sie das Gerät unverzüglich vom Netz, wenn Sie Brand- oder Rauchgeruch feststellen. Öffnen Sie das Gerät auf keinen Fall selbst, Sie könnten einen Stromschlag erhalten.

Ausführungshinweis

Dieses Gerät muß unter strenger Befolgung der Anweisungen des Herstellers installiert und gebraucht werden, wie in der Ihrem Produkt beiliegenden Benutzerdokumentation beschrieben.

Lesen Sie vor Beginn der Installation oder des Gebrauchs dieses Produktes den Inhalt dieses Dokuments hinsichtlich spezifischer Einschränkungen oder Vorschriften, die in dem Land gelten, in dem Sie dieses Produkt gebrauchen möchten, sorgfältig durch.

In manchen Situationen oder Umgebungen kann der Gebrauch drahtloser Geräte durch den Eigentümer des Gebäudes oder verantwortliche Repräsentanten der Organisation eingeschränkt werden.

Falls Sie sich hinsichtlich der für den Gebrauch drahtloser Systeme in einer spezifischen Organisation oder Umgebung (zum Beispiel, in Flughäfen) geltenden Vorschriften nicht sicher sind, sollten Sie für den Gebrauch dieses Gerätes um Genehmigung bitten, bevor Sie das System einschalten.

THOMSON ist nicht verantwortlich für Radio- oder Fernsehinterferenzen aufgrund nicht autorisierter Veränderung des Gerätes oder des Austauschs oder Anbringens von Anschlusskabeln und Zubehör, die nicht von THOMSON spezifiziert wurden. Die Korrektur einer durch eine solche nicht autorisierte Veränderung, Austausch oder Anbringung ausgelöste Interferenz unterliegt der Verantwortung des Benutzers.

THOMSON und seine autorisierten Wiederverkäufer oder Händler sind nicht haftbar für Schäden oder die Übertretung von Regierungsbestimmungen, die sich aus einer Nichteinhaltung dieser Richtlinien ergeben.

Konformitätserklärung der Europäischen Gemeinschaft



Hiermit erklärt THOMSON, dass sich dieses Produkt in Übereinstimmung mit den grundlegenden Anforderungen und den anderen relevanten Vorschriften der Richtlinie 1999/5/EG des Europäischen Parlaments und des Rates befindet.

Dieses Gerät darf in den Ländern der EUROPÄISCHEN UNION sowie in allen Mitgliedsländern der Europäischen Freihandelsorganisation verwendet werden.

Die Konformitätserklärung finden Sie unter www.thomson-broadband.com.

Falls das Produkt mit einem IEEE802.11b/IEEE802.11g/IEEE802.11n drahtlosen Sender/Empfänger ausgerüstet ist:

- > sollte es nur im inneren Hausbereich benützt werden.
- > stimmt es überein mit den grundlegenden Einschränkungen gemäß die Europäische Empfehlung (1999/519/EG) zur Begrenzung der Exposition der Bevölkerung gegenüber elektromagnetischen Feldern.

INSTRUCCIONES DE SEGURIDAD E INFORMACIÓN SOBRE REGULACIONES

ANTES DE QUE COMIENCE CON LA INSTALACIÓN DE ESTE PRODUCTO, LEA ATENTAMENTE ESTAS INSTRUCCIONES



Al utilizar este producto, siga siempre las precauciones de seguridad básicas para reducir el riesgo de incendios, choque eléctrico y lesiones a personas, lo que incluye lo siguiente:

- > Instale siempre el producto como se describe en la documentación que acompaña al producto.
- > Evite la utilización de este producto durante una tormenta eléctrica. Aunque es poco probable, existe el riesgo de que se produzca una descarga eléctrica a causa de los rayos.
- > No utilice este producto para informar de un escape de gas en las proximidades de dicho escape.

La LAN inalámbrica

Si este producto está equipado con un transmisor-receptor inalámbrico, utilizará tecnología de radio DSSS (Direct Sequence Spread Spectrum, espectro amplio de secuencia directa)/OFDM (Orthogonal Frequency Division Modulation, modulación por división de frecuencias de carácter orthogonal), por lo que es interoperable con otros productos inalámbricos DSSS/OFDM que:

- > Cumplan la normativa IEEE 802.11b/IEEE802.11g/IEEE802.11n sobre LAN inalámbricas, según ha definido y aprobado el Instituto de Ingeniería Eléctrica y Electrónica (IEEE, por sus siglas en inglés).
- > Posean la certificación Wi-Fi® CERTIFIED™ tal como define la Wi-Fi® Alliance.

Directiva

A menos que disponga de la previa aprobación expresa por escrito de THOMSON, no podrá:

- > desensamblar, descompilar, realizar ingeniería inversa, examinar ni analizar de ninguna otra manera el equipo, su contenido, funciones, ni intentar por otros medios extraer el código fuente (ni las ideas, algoritmos, estructura u organización subyacentes) del equipo, o de alguna otra información proporcionada por THOMSON, excepto en los términos en que esta restricción sea aplicada por las leyes competentes;
- > copiar, alquilar, ceder, revender, traspasar la licencia, ni transferir o distribuir de otra manera el equipo a terceros;
- > modificar, adaptar ni crear trabajos derivados del equipo;
- > retirar de ninguna de las copias del equipo la identificación del producto, el copyright u otros avisos;
- > difundir información o análisis de rendimiento (incluidas, sin limitación, pruebas de referencia) de ninguna fuente relacionada con el equipo.

Aquellas actuaciones que no sean aprobadas expresamente por THOMSON acarrearán la pérdida de la garantía del producto y pueden invalidar la autoridad del usuario para trabajar con este equipo.

THOMSON renuncia a todo tipo de responsabilidad en caso de utilización que no se ajuste a lo expuesto en estas instrucciones.

Información medioambiental – directiva RAEE (WEEE)



Este símbolo indica que el aparato eléctrico fuera de uso se debe desechar de forma independiente y nunca junto a los residuos domésticos. Con este propósito, la Unión Europea ha establecido un sistema de recolección y reciclaje específico en el que la responsabilidad recae sobre los productores.

Este aparato está diseñado y fabricado con materiales y componentes de alta calidad que se pueden reciclar y reutilizar.

Es muy probable que los aparatos eléctricos y electrónicos contengan elementos que, si bien son indispensables para el correcto funcionamiento del sistema, pueden resultar peligrosos para la salud y el medioambiente si su manipulación o eliminación se realiza de forma incorrecta. Por lo tanto, le rogamos que no deseche su aparato usado junto con los residuos domésticos.

Si usted es el propietario del aparato, debe depositarlo en el punto de recogida local correspondiente o entregarlo al vendedor a cambio de la adquisición de un aparato nuevo.

- > Si usted es un usuario profesional, consulte las instrucciones de su proveedor.
- > Si tiene el aparato en régimen de alquiler o en depósito, póngase en contacto con su proveedor de servicios.

¡Ayúdenos a conservar el medioambiente en el que vivimos!

Instrucciones de seguridad

Condiciones climáticas

Este producto:

- > Ha sido diseñado para su uso en equipos de un edificio; la temperatura ambiente máxima no puede exceder de 40°C (104°F).
- > No deberá montarse en una ubicación expuesta a radiación solar o térmica directa o excesiva.
- > No deberá exponerse a condiciones de acumulación de calor ni deberá exponerse a agua o condensación.
- > Debe instalarse en un entorno con grado de contaminación 2 (un entorno libre de contaminación o bien ésta sólo es seca, no conductora).

Limpieza

Desconecte éste producto del ordenador antes de limpiar. No emplee limpiadores líquidos o en aerosol. Utilice un paño húmedo para la limpieza.

Agua y humedad

No utilice este producto cerca del agua, por ejemplo, cerca de una bañera, lavabo, fregadero de cocina, lavadero, en un suelo húmedo o cerca de una piscina. El traslado del producto de un entorno frío a otro caliente puede provocar condensación en algunas de sus partes internas. Deje que se seque antes de reiniciar el producto.

Clasificaciones de interfaz

Las interfaces externas del panel posterior del producto se clasifican de la siguiente manera:

- > DSL, ADSL, SHDSL, VDSL, Line: circuito TNV, sujeto a excesos de voltaje (TNV-3)
- > ISDN: circuito SELV
- > PSTN, FXO: circuito TNV, sujeto a excesos de voltaje (TNV-3)

- > Phone, VoIP, FXS: circuito TNV, no sujeto a excesos de voltaje (TNV-2)



- > El puerto de Phone, VoIP, FXS se clasificará como un circuito **TNV-3** cuando se conecta internamente al puerto PSTN, FXO, por ejemplo, cuando el dispositivo está apagado.
- > Si el producto está equipado con una interfaz USB (esclavo y/o maestro) o cualquier tipo de conector con recubrimiento metálico, no será posible conectar el puerto de Phone, VoIP, FXS al puerto PSTN, FXO o DSL, ADSL, SHDSL, VDSL, Line de ningún modo, por ejemplo, con un cable telefónico externo.
- > Todos los demás puertos de interfaz (p. ej., Ethernet, 10/100Base-T/MDI(-X), USB, Console, Craft, etc.), incluida la potencia utilizada de baja tensión de la fuente de alimentación de corriente alterna: circuitos SELV.

Alimentación eléctrica

La alimentación eléctrica del producto debe ajustarse a las especificaciones indicadas en las etiquetas de marcado. La fuente de alimentación debe ser de Clase II y una Fuente de alimentación limitada de acuerdo con los requisitos de IEC60950-1/ EN60950-1, cláusula 2.5 y estar clasificada como se indica en la etiqueta del producto. Debe ser probada y aprobada para los estándares nacionales o locales.

Queda prohibida la utilización de otros tipos de fuente de alimentación. Si no conoce con seguridad el tipo de fuente de alimentación necesaria, consulte la documentación del usuario del producto o bien póngase en contacto con su distribuidor local del producto.

USB

El producto debe conectarse a un puerto USB identificado que cumple los requisitos de fuente de alimentación limitada.

Cable del teléfono



PRECAUCIÓN: Para reducir el riesgo de incendio, utilice únicamente un cable de línea de comunicaciones de tamaño nº 26 AWG o mayor.

Conecte el cable de línea de comunicaciones únicamente en el receptáculo PSTN, FXO, DSL, ADSL, SHDSL, VDSL, o Line del producto. No enchufe nunca el cable de línea de comunicaciones en otro receptáculo del producto.

Para conectar los cables al producto siga el procedimiento tal y como se indica en la guía de instalación.

Separador central/filtro(s) de distribución (si procede)

Si se necesita servicios de telefonía en la misma línea, deberá instalar un separador central o filtros de distribución para obtener un rendimiento óptimo de DSL.

Dependiendo de la configuración de DSL y del tipo de separador o filtros que necesite, la instalación deberá llevarla a cabo personal de servicio técnico cualificado. Consulte a la compañía de servicios telefónicos o al proveedor de servicios DSL si desea obtener instrucciones.

Accesibilidad

La fuente de alimentación de conexión directa sirve como dispositivo de desconexión. Asegúrese de que el enchufe de alimentación en el que conecta la fuente de alimentación es de fácil acceso y que se encuentra lo más cercano posible al equipo.

Sobrecarga

No sobrecargue los enchufes de alimentación eléctrica ni los cables alargadores ya que aumenta el riesgo de incendio o de descarga eléctrica.

Servicio técnico

Para reducir el riesgo de descarga eléctrica, no desmonte este producto. Ninguno de los componentes internos puede ser sustituido por el usuario, por tanto no existe razón alguna para acceder al interior. La apertura o extracción de las cubiertas puede exponerle a tensiones peligrosas. Un reensamblaje incorrecto podría ocasionar una descarga eléctrica si utiliza el equipo posteriormente.

Si se requieren trabajos de servicio técnico o de reparación, lleve el producto a un representante de servicio técnico cualificado.

Daños que requieren servicio técnico

Desenchufe este producto de la toma de pared y solicite servicio técnico a personal cualificado ante estas condiciones:

- > Cuando la fuente de alimentación o su enchufe estén dañados.
- > Cuando los cables conectados estén dañados o deshilachados.
- > Si se ha derramado líquido en el producto.
- > Si el producto ha estado expuesto a la lluvia o al agua.
- > Si el producto no funciona correctamente.
- > Si el producto se ha caído o dañado de algún modo.
- > Existen signos evidentes de sobrecalentamiento.
- > Si el producto presenta un cambio notable en el rendimiento.

Desconecte inmediatamente el producto si observa que desprende un olor a quemado o humo. En ninguna circunstancia debe abrir el equipo usted mismo; corre el riesgo de electrocutarse.

Notificación sobre normativa

Debe instalar y utilizar este dispositivo cumpliendo estrictamente las instrucciones del fabricante, tal como se describen en la documentación para el usuario que acompaña al producto.

Antes de que comience con la instalación de este producto, lea atentamente el contenido de este documento sobre limitaciones y la normativa específica sobre este dispositivo que pueden aplicarse en el país en el que desea utilizarlo.

En algunas situaciones o en algunos entornos, la utilización de dispositivos inalámbricos puede estar restringida por el propietario del edificio o representantes responsables de la organización.

Si no está seguro de la política que corresponde al uso de equipo inalámbrico en una organización o un entorno concretos (por ejemplo, aeropuertos), le instamos a que pida autorización para utilizar este dispositivo antes de activar el equipo.

THOMSON no se responsabiliza de ninguna interferencia de radio o televisión ocasionada por la modificación no autorizada del dispositivo, ni por la sustitución o conexión de cables de conexión o equipo distintos de los especificados por THOMSON. La corrección de las interferencias ocasionadas por dichas modificaciones, sustituciones o conexiones no autorizadas será responsabilidad del usuario.

THOMSON y sus distribuidores autorizados quedan exentos de toda responsabilidad por los daños o el incumplimiento de las normativas gubernamentales que pudieran derivarse de la infracción de dichas pautas.

Declaración de conformidad de la Comunidad Europea



Por medio de la presente THOMSON declara que el producto cumple con los requisitos esenciales y cualesquiera otras disposiciones aplicables o exigibles de la Directiva 1999/5/CE del Parlamento Europeo y del Consejo.

Este equipo puede utilizarse en todos los países miembros de la UNIÓN EUROPEA y de la países miembros de la Asociación Europea de Libre Comercio.

Puede consultar la Declaración de Conformidad en www.thomson-broadband.com.

En caso que este producto sea equipado con un accesorio inalámbrico IEEE802.11b/IEEE802.11g/IEEE802.11n:

- > Su uso está restringido sólo a espacios interiores.
- > Cumple con las restricciones básicas y límites definidos en la Recomendación del Consejo (1999/519/EC) sobre limitación a la exposición de las personas en general, a campos electromagnéticos.

INSTRUÇÕES DE SEGURANÇA E INFORMAÇÕES SOBRE NORMAS

ANTES DE INICIAR A INSTALAÇÃO OU A UTILIZAÇÃO DESTES PRODUTOS, LEIA ATENTAMENTE ESTAS INSTRUÇÕES



Ao utilizar este produto, adote sempre as precauções básicas de segurança para reduzir o risco de incêndio, choque elétrico e acidentes para as pessoas, incluindo o seguinte:

- > Instale sempre o produto conforme descrito na documentação que acompanha o produto.
- > Evite utilizar este produto durante uma tempestade de raios. Pode haver um remoto risco de choque elétrico por causa dos raios.
- > Não utilize este produto para informar um vazamento de gás nas proximidades do vazamento.

Wireless LAN

No caso deste produto estar equipado com um transceptor sem fio, ele usará a tecnologia de rádio Direct Sequence Spread Spectrum (DSSS) / Orthogonal Frequency Division Modulation (OFDM), portanto esse produto funciona com qualquer outro produto sem fio de tipo DSSS/OFDM que:

- > seja compatível com a Norma IEEE 802.11b/IEEE802.11g/IEEE802.11n sobre LANs sem fio, conforme definida e aprovada pelo Instituto de Engenheiros Eletricistas e Eletrônicos (IEEE).
- > seja Wi-Fi® CERTIFIED™, conforme definido pela Wi-Fi® Alliance.

Diretiva

Exceto se aprovado de forma expressa e antecipada pela THOMSON, por escrito, você não poderá:

- > desmontar, decompilar, reverter a engenharia, rastrear ou analisar de outra forma o equipamento, seu conteúdo, funcionamento ou funcionalidade, ou, então, tentar derivar um código-fonte (ou idéias básicas, algoritmos, estrutura ou organização) do equipamento, ou com base em qualquer outra informação fornecida pela THOMSON, exceto até onde essa restrição seja expressamente proibida pela legislação local;
- > copiar, alugar, emprestar, revender, sublicenciar ou, de outra forma, transferir ou distribuir o equipamento a terceiros;
- > modificar, adaptar ou criar um trabalho oriundo do equipamento;
- > remover de qualquer cópia do equipamento qualquer identificação do produto, notas de direitos autorais ou outras informações;
- > divulgar informações ou análise do desempenho (incluindo, mas não se limitando a, padrões de desempenho) de qualquer fonte relacionada ao equipamento.

Tais atos não autorizados expressamente pela THOMSON resultarão na perda da garantia do produto e na proibição do uso deste equipamento por parte do usuário.

A THOMSON estará isenta de toda responsabilidade, no caso de uso incompatível com as instruções atuais.

Informações ambientais - directriz REEE (WEEE)



Este símbolo significa que, em caso do seu equipamento ficar inutilizado, deverá ser colectado em separado do lixo doméstico. A união Europeia implementou um sistema específico de colecta e reciclagem, pelo o qual os fabricantes são responsáveis.

Este equipamento foi desenhado e manufacturado com materiais e componentes de alta qualidade que poderão ser reciclados e usados.

Os equipamentos eléctricos e electrónicos poderão conter componentes essenciais ao seu bom funcionamento mas, que poderão ser perigosos à saúde e ao ambiente se, não forem manuseados e usados da forma correcta. Assim, por favor, não coloque o seu equipamento inutilizado no lixo doméstico.

Se é o proprietário deste equipamento, deverá depositá-lo num local de colecta apropriado ou, devolvê-lo ao vendedor a quem o comprou.

- > Se é um profissional, por favor, siga as instruções do seu fornecedor.
- > Se este equipamento é alugado ou está a seu cargo, por favor contacte o seu provedor de serviços.

Ajude-nos a proteger o meio ambiente em que vivemos!

Instruções de segurança

Condições climáticas

Este produto:

- > É elaborado para uso em uma área de trabalho fixa interna; a uma temperatura ambiente máxima de 40°C (104°F).
- > Não deve ser montado em um local exposto à radiação solar direta ou excessiva e/ou ao calor.
- > Não deve ser exposto a condições de retenção de calor, nem deve entrar em contato com água ou ficar sujeito à condensação.
- > Deve ser instalado em um ambiente de Grau 2 de Poluição (ambiente em que não há poluição ou apenas uma poluição seca, não alastrável).

Limpeza

Desconecte este produto do computador antes da limpeza. Não utilize produtos de limpeza líquidos ou em aerossol. Use um pano úmido para a limpeza.

Água e umidade

Não use este produto perto de água, por exemplo, perto de uma banheira, pias, tanque, em uma área molhada ou perto de uma piscina. A transição do produto de um ambiente frio para um ambiente quente pode gerar condensação em algumas de suas partes internas. Deixe secar por conta própria, antes de reiniciar o produto.

Classificações da interface

As interfaces externas painel posterior do produto são classificadas como descrito a seguir:

- > DSL, ADSL, SHDSL, VDSL, Line: Circuito TNV, sujeito a sobretensões (TNV-3)
- > ISDN: Circuito SELV
- > PSTN, FXO: Circuito TNV, sujeito a sobretensões (TNV-3)

- > Phone, VoIP, FXS: Circuito TNV, não sujeito a sobretensões (TNV-2)



AVISO

- > O porta Phone, VoIP, FXS, será classificado como um circuito **TNV-3** quando conectado internamente à porta PSTN, FXO por exemplo, quando o dispositivo estiver desligado.
- > Se o produto estiver equipado com uma interface USB (escrava e/ou mestre) ou com qualquer tipo de conector com blindagem metálica, não será permitido conectar ao porta Phone, VoIP, FXS com as portas PSTN, FXO ou DSL, ADSL, SHDSL, VDSL, Line mesmo que seja com um cabo de telefone externo.
- > Todas as outras portas de interface (como a Ethernet, 10/100Base-T/MDI(-X), USB, Console, Craft, etc...), incluindo a entrada de alimentação de baixa tensão a partir de alimentação principal de corrente alternada: Circuitos SELV.

Alimentação elétrica

O sistema de alimentação de energia do produto deve estar de acordo com as especificações indicadas nas etiquetas de marcação.

A fonte de alimentação deve ser de Classe II e uma Fonte de Alimentação Limitada, em conformidade com as exigências do IEC60950-1/ EN60950-1, Cláusula 2.5 e com capacidade como e indicado na etiqueta do produto. Deve ser testado e aprovado em relação aos padrões nacionais ou locais.

É proibido usar outros tipos de fontes de alimentação. Se você não tiver certeza do tipo de fonte de alimentação necessária, consulte a documentação do usuário do produto ou entre em contato com o representante local do produto.

USB

O dispositivo deverá ser ligado a uma porta USB que cumpra o requisito de fonte de alimentação limitada.

Cabo telefônico



CUIDADO

Para reduzir o risco de incêndio, use somente o tamanho de fio Nº 26 AWG ou cabo maior de linha de telecomunicação.

Ligue o cabo da linha de telecomunicação somente no receptáculo PSTN, FXO, DSL, ADSL, SHDSL, VDSL, ou Line do produto. Nunca ligue esse cabo a qualquer outra entrada do produto.

Seguir o procedimento para conexão dos cabos ao produto, na mesma seqüência instruída e apresentada no guia de instalação.

Divisor central / filtro(s) distribuído(s) (se aplicável)

Se um serviço telefônico for necessário na mesma linha, um divisor central ou filtro(s) distribuído(s) deverão ser instalados para se obter o máximo desempenho do DSL.

Dependendo da configuração do DSL e do tipo de divisores/filtros, a instalação deve ser feita por pessoal técnico qualificado. Consulte a empresa de serviços telefônicos ou provedor de serviços de DSL para obter instruções.

Acessibilidade

A fonte de alimentação de plugue direto funciona como um dispositivo de desconexão. Certifique-se de que a tomada do soquete de energia, que recebe a fonte de alimentação, esteja bastante acessível e localizada o mais perto possível do equipamento.

Sobrecarga

Não sobrecarregue as saídas principais e os fios de extensão porque isso aumenta o risco de incêndio ou choque elétrico.

Assistência

Para reduzir o risco de choque elétrico, não desmonte este produto. Nenhuma de suas partes internas devem ser substituídas pelo usuário; sendo assim, não há motivo para acessar o interior do equipamento. A abertura ou remoção das tampas pode expor o usuário a tensões perigosas. A remontagem incorreta pode causar choque elétrico se o dispositivo for usado em seguida.

Se for necessária a assistência ou reparo, leve o equipamento a um prestador de serviços qualificado.

Danos que exigem assistência

Se verificar a existência de alguma das seguintes condições, desligue este produto da tomada de energia e solicite assistência a um técnico qualificado:

- > Quando a fonte de alimentação ou o plugue estiver danificada(o).
- > Quando os cabos acoplados estiverem danificados ou esfiapados.
- > Se qualquer líquido tiver sido derramado sobre o produto.
- > Se o produto tiver sido exposto à chuva ou água.
- > Se o produto não funcionar normalmente.
- > Se o produto tiver caído ou estiver danificado de alguma forma.
- > Se o produto apresentar uma mudança perceptível no desempenho.
- > Não há sinais perceptíveis de superaquecimento.

Desligue imediatamente o produto, se ele exalar cheiro de queimado ou fumaça. Em hipótese alguma você deverá abrir o equipamento; há risco de eletrocussão.

Notificação sobre a regulamentação

Instale e utilize este dispositivo observando rigorosamente as instruções do fabricante, conforme escrito na documentação do usuário que acompanha o produto.

Antes de iniciar a instalação ou a utilização deste produto, leia atentamente o conteúdo deste documento e localize as regras ou restrições específicas para o dispositivo, que possam se aplicar ao país onde você deseja usar este produto.

Em algumas situações ou ambientes, o uso dos dispositivos sem fio pode ser restringido pelo proprietário do prédio ou pelos representantes responsáveis pela organização.

Caso não tenha certeza sobre a política aplicável quanto ao uso de equipamentos sem fio em uma organização ou ambiente específico (em aeroportos, por exemplo), procure pedir autorização de uso deste dispositivo para ligar o equipamento.

THOMSON não se responsabiliza por qualquer interferência de rádio ou televisão causada por modificações não autorizadas feitas ao dispositivo, nem pela substituição ou pela inserção dos cabos do equipamento de maneira diferente da especificada pelo THOMSON. A correção da interferência causada por essa modificação não autorizada, substituição ou ligação errada será de responsabilidade do usuário.

THOMSON e seus revendedores ou distribuidores autorizados não se responsabilizam por qualquer dano ou violação das regulamentações do governo que sejam oriundas da não observância destas diretrizes.

Declaração de Conformidade da Comunidade Européia



A THOMSON declara neste documento que este produto está em conformidade com os requisitos básicos e com outras provisões relevantes da Directiva 1999/5/CE del Parlamento Europeo y del Consejo.

Este equipamento pode ser usado em todos países membros da União Européia e em todos os países membros da Associação Européia de Livre Comércio.

A Declaração de Conformidade pode ser encontrada em www.thomson-broadband.com.

Em caso que esse Produto é equipado com um transmissor/receptor sem fio IEEE802.11b/IEEE802.11g/IEEE802.11n:

- > O uso é limitado ao interior só
- > É compatível com as restrições básicas e limites básicos como definidos em Council Recommendation (1999/519/EC) sobre a limitação de exposição do grande público aos radiações.

PRECAUZIONI DI SICUREZZA E INFORMAZIONI SULLA NORMATIVA

PRIMA DI INSTALLARE O UTILIZZARE IL PRODOTTO, LEGGERE ATTENTAMENTE LE PRESENTI ISTRUZIONI



Quando si utilizza questo prodotto è necessario rispettare sempre le precauzioni di sicurezza fondamentali per ridurre il rischio di incendio, scosse elettriche o lesioni personali operando nel modo seguente:

- > Installare sempre il prodotto come illustrato nella documentazione allegata al prodotto.
- > Evitare di utilizzare questo prodotto durante un temporale. Si potrebbe presentare un rischio remoto di scossa elettrica causata da un fulmine.
- > Non utilizzare questo prodotto per segnalare una perdita di gas nelle vicinanze della perdita stessa.

Wireless LAN

Se questo prodotto è dotato di un ricetrasmittitore wireless, verrà utilizzata la tecnologia radio DSSS (Direct Sequence Spread Spectrum)/OFDM (Orthogonal Frequency Division Modulation). Di conseguenza il prodotto è stato progettato per lavorare in cooperazione con qualsiasi altro prodotto wireless che usi questa tecnologia. Le che:

- > sia conforme allo standard IEEE 802.11b/IEEE802.11g/IEEE802.11n per le LAN wireless, definito ed approvato dall'Institute of Electrical and Electronics Engineers (Istituto Tecnici Elettronici ed Elettrici);
- > disponga della certificazione "Wi-Fi® CERTIFIED™", definita dalla Wi-Fi® Alliance.

Direttiva

Salvo espressamente e precedentemente approvato da THOMSON per iscritto e nei limiti previsti dalle locali normative vigenti in materia, è vietato:

- > disassemblare, decompilare, decodificare, analizzare o altrimenti esaminare l'apparecchiatura, il suo contenuto, funzionamento o funzionalità, o altrimenti tentare di individuare il codice sorgente (o le idee, gli algoritmi, la struttura o l'organizzazione di base) dall'apparecchiatura, o da ogni altra informazione fornita da THOMSON;
- > copiare, noleggiare, prestare, rivendere, concedere in sublicenza o altrimenti trasferire o distribuire l'apparecchiatura a terzi;
- > modificare, adattare o creare un prodotto derivato dell'apparecchiatura;
- > rimuovere da eventuali copie dell'apparecchiatura l'identificazione del prodotto, il copyright o altre informazioni;
- > divulgare informazioni o analisi sulle prestazioni (comprese, tra le altre, le analisi comparative) provenienti da qualsiasi fonte, relative all'apparecchiatura.

Tali atti, se non approvati espressamente da THOMSON, invalideranno la garanzia sul prodotto e l'autorizzazione all'uso dell'apparecchiatura accordata all'utente.

THOMSON declina qualsiasi responsabilità in caso di utilizzo non conforme alle presenti istruzioni.

Informazioni sulla protezione ambientale - Direttiva RAEE (WEEE)



Questo simbolo significa che il vostro apparecchio elettronico fuori uso non deve essere gettato con i normali rifiuti casalinghi, ma smaltito separatamente. A questo scopo, l'Unione Europea ha istituito un sistema di raccolta e riciclaggio specifici la cui responsabilità è affidata ai produttori.

Questo apparecchio è stato progettato e fabbricato con materiali e componenti di alta qualità che possono essere riciclati e riutilizzati.

Gli apparecchi elettrici e elettronici possono contenere elementi che, benché indispensabili al corretto funzionamento del sistema, possono risultare pericolosi per la salute e l'ambiente se sono manipolati o eliminati in modo inadeguato. Siete per questo pregati di non gettare il vostro vecchio apparecchio insieme ai normali rifiuti.

Se siete proprietari dell'apparecchio, dovete depositarlo presso l'apposito punto di raccolta o consegnarlo al vostro rivenditore in cambio dell'acquisto di un apparecchio nuovo.

- > Se lo utilizzate in ambito professionale, riferitevi alle istruzioni del vostro fornitore.
- > Se l'apparecchio è in affitto o in deposito, contattate il vostro fornitore di servizi.

Aiutateci a proteggere l'ambiente nel quale viviamo !



Lo smaltimento abusivo del prodotto da parte dell'utente comporta l'applicazione delle sanzioni amministrative previste dalle leggi vigenti in materia ambientale.

Precauzioni di sicurezza

Condizioni ambientali

Il prodotto:

- > Utilizzo in ambienti chiusi con temperatura non superiore a 40° C (104°F).
- > Non va montato in una posizione esposta a radiazioni solari e/o fonti di calore dirette o eccessive.
- > Non deve essere esposto a condizioni di calore eccessive né entrare in contatto con acqua o condensa.
- > Deve essere installato in un ambiente con grado di inquinamento 2 (un ambiente esente da agenti inquinanti o in cui sono presenti solo agenti inquinanti secchi non conduttori).

Pulizia

Disconnetti questo prodotto dal computer prima di pulirlo. Non utilizzare detergenti liquidi o da vaporizzare. Utilizzare un panno umido per la pulizia.

Acqua e umidità

Non utilizzare il prodotto in prossimità di acqua, ad esempio vicino a una vasca, un lavandino, un lavello, in uno scantinato umido o vicino a una piscina. Il passaggio del prodotto da un ambiente freddo a uno caldo potrebbe causare la formazione di condensa su alcuni componenti interni. Lasciare asciugare il prodotto prima di riavviarlo.

Classificazioni dell'interfaccia

Le interfacce esterne del pannello posteriore del prodotto sono classificate come segue:

- > DSL, ADSL, SHDSL, VDSL, Line: circuito TNV, soggetto a sovraccarichi di tensione (TNV-3)
- > ISDN: circuito SELV
- > PSTN, FXO: circuito TNV, soggetto a sovraccarichi di tensione (TNV-3)

- > Phone, VoIP, FXS: circuito TNV, non soggetto a sovraccarichi di tensione (TNV-2)



AVVISO

- > La porta Phone, VoIP, FXS verrà classificata come circuito **TNV-3** se collegata internamente alla porta PSTN, FXO, ad esempio quando il dispositivo è spento.
- > Se il prodotto è dotato di interfaccia USB (slave e/o master) o di un altro tipo di connettore con schermatura metallica, non è possibile collegare la porta Phone, VoIP, FXS alla porta PSTN, FXO o DSL, ADSL, SHDSL, VDSL, Line con alcun altro mezzo, ad esempio mediante un cavo telefonico esterno.
- > tutte le altre porte di interfaccia (ad es. Ethernet, 10/100Base-T/MDI(-X), USB, Console, Craft, ecc.), compresa la potenza assorbita a bassa tensione per l'alimentatore CA: circuiti SELV.

Alimentazione

L'alimentazione di prodotto deve rispettare le specifiche di alimentazione indicate sulle etichette di marcatura.

L'alimentazione elettrica deve essere di classe II ed essere una fonte limitata di energia in conformità ai requisiti della normativa IEC60950-1/ EN60950-1, clausola 2.5 con potenza o indicati sull'etichetta di prodotto. L'alimentazione deve essere stata collaudata e approvata in conformità agli standard nazionali o locali.

È vietato l'utilizzo di altri tipi di alimentazione elettrica. Se non si è sicuri del giusto tipo di alimentazione elettrica, consultare la documentazione per l'utente del prodotto oppure contattare il rivenditore locale.

USB

L'apparecchio deve essere connesso a una specifica port USB che sia compatibile con i requisiti di una fonte limitata di energia.

Cavo telefonico



ATTENZIONE

Per ridurre il rischio di incendio, usare solo un cavo per linea di telecomunicazione AWG 26 o di diametro maggiore.

Collegare il cavo per linea di telecomunicazione solamente alla porta PSTN, FXO, DSL, ADSL, SHDSL, VDSL, o Line del prodotto. Non collegare in nessun caso il cavo ad altre porte del prodotto.

Seguire la procedura relativa alla connessione dei cavi al prodotto nella stessa sequenza indicata dal guida d'installazione.

Ripartitore centrale / filtri distribuiti (se disponibili)

Se sulla stessa linea è richiesto il servizio telefonico, per garantire prestazioni DSL ottimali è necessario installare un ripartitore centrale oppure uno o più filtri distribuiti.

A seconda della configurazione DSL e del tipo di ripartitore/filtri, l'installazione deve essere eseguita da personale tecnico qualificato. Per le istruzioni, consultare la società telefonica o il provider del servizio DSL.

Accessibilità

L'alimentatore a presa diretta funziona da dispositivo di scollegamento. Assicurarsi che la presa di alimentazione sia facilmente accessibile e posizionata il più vicino possibile all'attrezzatura.

Sovraccarico

Non sovraccaricare le prese a muro e le prolunghie per non aumentare il rischio di incendio o di scossa elettrica.

Manutenzione

Per ridurre il rischio di scosse elettriche, non smontare il prodotto. Nessuna delle parti interne è sostituibile dall'utente, pertanto non vi è motivo di accedere al suo interno. L'apertura o la rimozione dei coperchi può esporre l'utente a tensioni pericolose. Un rimontaggio errato potrebbe provocare scosse elettriche durante il successivo utilizzo dell'apparecchio.

Se è necessario un intervento di manutenzione o riparazione, portare l'apparecchio in un centro di assistenza qualificato.

Danni che richiedono assistenza

Scollegare il prodotto dalla presa murale e affidare la manutenzione a personale qualificato nei casi riportati di seguito:

- > l'alimentazione o la spina sono danneggiati.
- > i cavi collegati sono danneggiati o usurati.
- > il prodotto è venuto accidentalmente a contatto con sostanze liquide.
- > il prodotto è stato esposto a pioggia o acqua.
- > il prodotto non funziona correttamente.
- > il prodotto è stato danneggiato (ad esempio cadendo).
- > si riscontra un evidente surriscaldamento.
- > il prodotto presenta un'evidente variazione delle prestazioni.

Se si avverte odore di bruciato o si nota del fumo fuoriuscire dal dispositivo, scollegarlo immediatamente. Per evitare il rischio di scosse elettriche, non è consentito in alcun caso aprire l'apparecchiatura.

Avvertenza legale

Questo dispositivo deve essere installato e utilizzato nel pieno rispetto delle istruzioni fornite dal produttore riportate nella documentazione in dotazione al prodotto.

Prima di installare o utilizzare il prodotto, leggere attentamente il contenuto del presente documento sulle restrizioni o le normative specifiche del dispositivo che potrebbero essere applicate nel Paese di utilizzo del prodotto.

In alcune situazioni o in determinati ambienti, l'utilizzo di dispositivi wireless potrebbe essere limitato dal proprietario dell'edificio o dai rappresentanti responsabili dell'azienda.

In caso di dubbi sulle norme relative all'utilizzo di apparecchiature wireless in un'azienda o in un ambiente specifici (ad es. aeroporti), si consiglia di richiedere l'autorizzazione all'utilizzo del dispositivo prima di accendere l'apparecchiatura. THOMSON non potrà essere ritenuto responsabile per interferenze radio o TV causate da modifiche non autorizzate apportate al dispositivo oppure dalla sostituzione o dal collegamento di cavi o apparecchiature diversi da quelli prescritti dal THOMSON. L'eliminazione delle interferenze causate da tali modifiche, sostituzioni o collegamenti non autorizzati sarà di responsabilità dell'utente.

THOMSON e i relativi rivenditori o distributori autorizzati non potranno essere ritenuti responsabili per danni o violazioni di norme di legge causati dalla mancata osservanza di queste indicazioni.

Dichiarazione di conformità della Comunità Europea



Con la presente THOMSON dichiara che il prodotto è conforme ai requisiti essenziali ed alle altre disposizioni pertinenti stabilite dalla Direttiva 1999/5/CE del Parlamento europeo e del Consiglio.

La presente apparecchiatura può essere utilizzata in paesi membri dell'Unione Europea e in paesi membri dell'Associazione Europea di Libero Scambio.

La Dichiarazione di conformità è reperibile all'indirizzo www.thomson-broadband.com.

Se il prodotto e' comprensivo di ricetrasmittitore wireless IEEE 802.11b/IEEE802.11g/IEEE802.11n:

- > L'utilizzo e' limitato ad ambienti chiusi.
- > E' conforme ai limiti e alle restrizioni imposte dal Council Recommendation (1999/519/EC) in merito all'esposizione al pubblico a campi elettromagnetici.

SÄKERHETSFÖRESKRIFTER OCH -INFORMATION

INNAN DU BÖRJAR INSTALLERA ELLER ANVÄNDA DENNA PRODUKT, SKA DU NOGGRANT LÄSA DESSA FÖRESKRIFTER



Följ alltid de grundläggande säkerhetsåtgärderna när du använder den här produkten för att förebygga risken för brand, elstöt och personskador, inklusive följande:

- > Installera alltid produkten enligt beskrivningen i dokumentationen som medföljer produkten.
- > Undvik att använda den här produkten under åskoväder. Det kan finnas en liten risk för elstötar från blixnar.
- > Använd inte den här produkten för att rapportera en gasläcka i närheten av själva gasläckan.

Trådlös LAN

Om produkten har en trådlös transceiver används radiotekniken Direct Sequence Spread Spectrum (DSSS) / Orthogonal Frequency Division Modulation (OFDM). Och är designad att ha interoperabilitet med motsvarande trådlösa produkter av DSSS/OFDM typ:

- > Uppfyller standarden IEEE 802.11b/IEEE802.11g/IEEE802.11n för trådlösa LAN-produkter, som definierats och godkänts av Institute of Electrical and Electronics Engineers (IEEE).
- > är Wi-Fi® CERTIFIED™ enligt Wi-Fi® Alliances definition.

Direktiv

Du får inte utan uttryckligt och skriftligt tillstånd från THOMSON:

- > Demontera, dekompile, efterforska, spåra eller på annat sätt analysera utrustningen, dess innehåll, förfaringsätt eller funktion, eller på annat sätt försöka härleda källkod (eller bakomliggande idéer, algoritmer, struktur eller organisation) från utrustningen, eller någon annan information som tillhandahållits av THOMSON, under förutsättning att denna begränsning inte uttryckligen är förbjuden enligt tvingande lagstiftning;
- > Kopiera, uthyra, återförsälja, upplåta i andra hand eller på annat sätt överföra eller distribuera utrustningen till tredje part;
- > Ändra, anpassa eller skapa derivat av utrustningen;
- > Avlägsna identifiering av produkten, immaterialrättsliga eller andra markeringar från utrustningen;
- > Förändra information om prestanda eller analys (inklusive men ej begränsat till referenser) från någon källa som är förknippad med utrustningen.

Dyliga åtgärder, som inte uttryckligen godkänts av THOMSON, kommer att innebära förverkande av produktgaranti samt användarens rätt att använda utrustningen.

THOMSON franskriver sig allt ansvar i händelse av användning på ett sätt som inte överensstämmer med aktuella föreskrifter.

Miljöinformation (WEEE-direktiv)



Denna symbol anger att din obrukbara elektroniska apparat ska kasseras separat och inte kastas i hushållsavfallet. Därför har Europeiska unionen inrättat ett särskilt uppsamlingsystem för vilket tillverkarna är ansvariga.

Denna apparat har utformats och tillverkats av material och komponenter av hög kvalitet som kan återvinnas och komma till användning på nytt.

De elektriska och elektroniska apparaterna kan naturligtvis innehålla element som, även om de är oundgängliga för systemets funktion, kan visa sig vara farliga för hälsa och miljö om de hanteras eller kasseras på felaktigt sätt. Därför ska du inte avfallshandla din uttjänta apparat tillsammans med hushållsavfallet.

Om du själv äger apparaten ska du lämna in den på lämplig lokal uppsamlingscentral eller skicka tillbaka den till försäljaren mot att du köper en ny.

- > Om du använder apparaten yrkesmässigt hänvisas till anvisningarna från din leverantör.
- > Om du hyr den eller förvarar den ska du kontakta din tjänsteleverantör.

Hjälp till att bevara vår miljö!

Säkerhetsföreskrifter

Klimatförhållanden

Denna produkt:

- > Är avsedd för stationär användning inomhus, på en plats där temperaturen aldrig överstiger 40°C (104°F).
- > Den får inte monteras på en plats som är utsatt för direkt solljus eller annan hög värmeutstrålning.
- > Den får inte utsättas för reflekterande värme, eller fukt eller kondens.
- > Den måste installeras i en miljö som är huvudsakligen fri från föroreningar (en miljö där det inte finns några föroreningar eller endast torra, icke-ledande föroreningar).

Rengöring

Se till att produkten inte är ansluten till vägguttaget eller datorn innan rengöringen påbörjas. Använd inte flytande rengöringsmedel eller spray. Använd en fuktig trasa vid rengöring.

Vatten och fukt

Använd inte produkten i närheten av vatten, såsom vid badkar, handfat, diskbänk, tvättho, fuktig källare eller simbassäng. Förflyttning av produkten från en kall miljö till en varm kan orsaka kondens på vissa invändiga delar. Låt produkten självtorka innan den startas igen.

Gränssnittsklassificering

De externa gränssnitten på produkts bakpanel är klassificerade så här:

- > DSL, ADSL, SHDSL, VDSL, Line: TNV-krets, utsatt för överspänningar (TNV-3)
- > ISDN: SELV-krets
- > PSTN, FXO: TNV-krets, utsatt för överspänningar (TNV-3)

- > Phone, VoIP, FXS: TNV-krets, inte utsatt för överspänningar (TNV-2)



WARNING

- > Phone-/VoIP-/FXS-porten klassificeras som **TNV-3**-krets när den ansluts internt till PSTN-/FXO-porten, till exempel när enheten är avstängd.
- > Om produkten är försedd med ett USB-gränssnitt (slav och/eller master) eller en typ av anslutning med metallhölje, är det inte tillåtet att ansluta Phone-/VoIP-/FXS-porten med PSTN-/FXO- eller DSL-/ADSL-/SHDSL-/VDSL-/Line-porten på något sätt, till exempel via en extern telefonkabel.
- > Alla andra gränssnittsportar (t.ex. Ethernet, 10/100Base-T/MDI(-X), USB, Console, Craft, m.fl.), inklusive lågspänningsingången från växelströmsadaptorn: SELV-kretsar.

Strömförsörjning

Strömförsörjningen till produkten måste följa de anvisningar om strömkälla som framgår av märkningen. Elförsörjningen måste vara av klass II och en begränsad strömkälla i enlighet med kraven i IEC60950-1/ EN60950-1, paragraf 2.5 och märkt som etiketten av produkten. Den måste vara testad och godkänd enligt nationell eller lokal standard.

Användning av någon annan sorts strömtillförsel är förbjuden. Om du är osäker på vilken elförsörjning som behövs läser du användarhandboken eller kontaktar din lokala återförsäljare.

USB

Apparaten måste vara ansluten till en känd USB port som möter alla krav på begränsad strömkälla.

Telefonsladd



FÖRSIKTIG

För att minska brandrisken ska endast trådstorlek No 26 AWG eller grövre användas för telekommunikationssladden.

Anslut telekommunikationssladden till någon av kontakterna PSTN, FXO, DSL, ADSL, SHDSL, VDSL eller Line på produkt. Sätt inte telekommunikationssladden i någon annan ingång på produkt. Följ installations anvisningarna steg för steg enligt bifogad installations guide.

Central linjedelare/fördelningsfilter (om sådant behövs)

Om telefonen ska användas på samma linje, krävs installation av en centraldelare eller ett distributionsfilter för maximala DSL-prestanda.

Installationen måste utföras av kvalificerad servicepersonal, beroende på vilken typ av DSL-konfigurering och delare/filter som används. Kontakta ditt telebolag eller din DSL-leverantör för vidare instruktioner.

Åtkomst

Strömadaptorn fungerar som frånkopplingsenhet. Se till att det eluttag utrustningen ansluts till är lätt att komma åt och placerat så nära utrustningen som möjligt.

Överbelastning

Överbelastning inte elnätet eller förlängningssladdar, eftersom detta ökar risken för brand eller elektriska stötar.

Underhåll

Undvik risk för elektriska stötar genom att inte plocka isär produkten. Ingen av de interna komponenterna kan bytas ut av användaren; därmed finns ingen anledning till att exponera innandömet. Öppnande eller avlägsnande av lock kan utsätta personer för skadlig elektrisk spänning. Felaktig återmontering kan orsaka elektriska stötar vid påföljande användning.

Om service eller reparation behövs, bör ni kontakta en kvalificerad reparatör.

Skador som kräver service

Om något av följande inträffar bör du dra ur kontakten ur vägguttaget och kontakta kvalificerad servicepersonal:

- > Om strömadaptern eller dess kontakt är skadad.
- > Om inkopplade sladdar är skadade eller slitna.
- > Om någon vätska har spillts på utrustningen.
- > Om utrustningen har utsatts för regn eller vatten.
- > Om utrustningen inte fungerar ordentligt.
- > Om utrustningen har tappats eller skadats på något sätt.
- > Om det finns tydliga tecken på överhettning.
- > Om produkten uppvisar uppenbara förändringar i prestanda.

Koppla omedelbart bort produkten från vägguttaget om det luktar bränt eller rök. Du ska under inga omständigheter öppna utrustningen på egen hand; du löper risk för dödsfall till följd av elektrisk ström.

Information om bestämmelser

Du måste installera och använda den här utrustningen i enlighet med tillverkarens anvisningar i dokumentationen som medföljer produkten.

Innan du börjar installera eller använda denna produkt, ska du noggrant läsa innehållet i detta dokument för apparatspecifika begränsningar eller regler som kan gälla i det land du vill använda denna produkt.

I vissa situationer eller miljöer kan användningen av trådlösa enheter begränsas av fastighetsägaren eller en organisations ansvariga representanter.

Om du är osäker på vad som gäller för användning av trådlös utrustning inom specifika organisationer eller i särskilda miljöer (t.ex. flygplatser) uppmanas du att fråga om lov innan du slår på utrustningen.

THOMSON är inte ansvarig för radio- eller televisionsstörning som orsakas av obehörig ändring av enheten, eller av att du bytt ut eller kopplat in anslutningskablar och utrustning, annat än vad som specificerats av THOMSON. Korrigering av störningen som orsakats av obehörig ändring, obehörigt utbyte eller tillägg är användarens ansvar.

THOMSON och dennes auktoriserade återförsäljare eller leverantörer kan inte hållas ansvariga för skada eller överträdelse av statliga bestämmelser, som kan uppstå om dessa riktlinjer inte följs.

Konformitetsdeklaration avseende EU



Härmed intygar THOMSON att denna produkt står i överensstämmelse med de väsentliga egenskapskrav och övriga relevanta bestämmelser som framgår av Europaparlamentets och Rådets direktiv 1999/5/EG.

Denna utrustning kan användas inom alla länder som är medlemmar i den Europeiska Unionen och alla länder som är medlemmar i den europeiska frihandelsorganisation.

Konformitetsdeklarationen finns på www.thomson-broadband.com.

Om produkten har en IEEE 802.11b/IEEE802.11g/IEEE802.11n trådlös mottagare:

- > Är den avsedd att endast användas i inomhus miljö
- > De uppfyller direktiven i Council Recommendation (1999/519/EC).

VEILIGHEIDSVOORSCHRIFTEN EN REGELGEVINGSINFORMATIE

LEES AANDACHTIG DEZE INSTRUCTIES DOOR, VOORALEER U BEGINT MET DE INSTALLATIE OF HET GEBRUIK VAN DIT PRODUCT



Neem, bij het gebruik van dit product, altijd de volgende elementaire voorzorgsmaatregelen om het risico op brand, elektrische schokken of persoonlijke letsels tot een minimum te beperken:

- > Installeer het product altijd op de wijze zoals is beschreven in de documentatie die is meegeleverd met uw product.
- > Gebruik dit product niet tijdens onweer. Er bestaat dan een gering risico van elektrische schokken ten gevolge van blikseminslag.
- > Gebruik dit product niet in de buurt van een gaslek om melding te maken van dit lek.

Draadloze LAN

Als dit product is uitgerust met een draadloze zender-ontvanger, dan werkt het op basis van Direct Sequence Spread Spectrum (DSSS) /Orthogonal Frequency Division Modulation (OFDM). Als zodanig is het ontworpen voor gebruik in combinatie met alle andere draadloze DSSS/OFDM-producten die:

- > Voldoen aan de standaard IEEE 802.11b/IEEE802.11g/IEEE802.11n voor draadloze LAN's, zoals gedefinieerd en goedgekeurd door het Institute of Electrical and Electronics Engineers (IEEE).
- > Wi-Fi® CERTIFIED™ (gecertificeerd voor Wi-Fi®) zijn, zoals gedefinieerd door de Wi-Fi® Alliance.

Richtlijn

Tenzij u beschikt over expliciete, voorafgaande, schriftelijke toestemming van THOMSON is het volgende verboden:

- > dit product disassembleren, decompileren, onderwerpen aan reverse-engineering, kopiëren of op andere wijze de apparatuur, de inhoud, werking of functionaliteit analyseren, of anderszins proberen de broncode af te leiden (of de onderliggende ideeën, algoritmen, structuur of organisatie) van de apparatuur, of andere informatie die door THOMSON wordt verschaft, behalve wanneer deze beperking uitdrukkelijk is verboden door het lokale recht;
- > dit product kopiëren, verhuren, uitlenen, opnieuw verkopen, een sublicentie verlenen voor deze apparatuur, of op andere wijze de apparatuur aan anderen overdragen of verspreiden;
- > dit product wijzigen, aanpassen of van dit product afgeleide apparatuur maken;
- > de productidentificatie, het copyright of andere bepalingen van kopieën van deze apparatuur verwijderen;
- > informatie verspreiden over de werking van de apparatuur of analysegegevens (inclusief, zonder beperking, vergelijkende testen) van iedere bron die met de apparatuur verbonden is.

Deze handelingen die niet uitdrukkelijk zijn goedgekeurd door THOMSON leiden tot verlies van de garantie en kunnen het recht van de gebruiker om deze apparatuur te gebruiken ongeldig maken.

THOMSON wijst alle aansprakelijkheid af als het gebruik niet beantwoordt aan deze voorschriften.

Informatie inzake milieuzorg – AEEA-richtlijn (WEEE)



Dit symbool betekent dat het product, eens afgedankt, gescheiden moet worden ingezameld en NIET samen met het huishoudelijk afval mag worden verwerkt. De Europese Unie heeft hiervoor een inzamel- en recyclagesysteem opgelegd waarvoor de verantwoordelijkheid bij de fabrikant ligt.

Dit product is ontwikkeld en vervaardigd met gebruik van hoogwaardige materialen en componenten die kunnen worden gerecycleerd en herbruikt.

Elektrische en elektronische apparaten bevatten onderdelen die nodig zijn om een foutloze werking te garanderen, maar die schadelijk voor het milieu en de gezondheid kunnen zijn als ze op een ondeskundige manier worden behandeld of verwijderd. Daarom dringen we erop aan om uw afgedankt product niet weg te gooien met het huishoudelijk afval.

Als particuliere eigenaar van dit product, bent u verplicht het afgedankte apparaat naar een lokaal inzamel- of recyclagepunt te brengen, of bij aankoop van een nieuw product het in te leveren bij de verkoper.

- > Als u een professionele gebruiker bent, volg dan de instructies van de fabrikant.
- > Als u dit product huurt of leaset, neem dan contact op met de verdeler.

Help ons samen het leefmilieu beschermen!

Veiligheidsvoorschriften

Klimaatomstandigheden

Dit product:

- > is bedoeld voor gebruik binnenshuis op een vaste plaats; de omgevingstemperatuur mag niet hoger zijn dan 40°C (104°F).
- > mag niet worden geïnstalleerd op een plaats waar deze onderhevig is aan direct of overmatig zonlicht en/of hitteuitstraling.
- > mag niet worden blootgesteld aan condities waarbij de warmte niet kan ontsnappen of aan water of condensatie.
- > moet worden geplaatst in een omgeving met hoogstens een vervuilingsgraad 2. (Omgeving waar geen vervuiling of alleen droge, niet-geleidende vervuiling is).

Schoonmaken

Ontkoppel het product van de netspanning en de computer voordat u het product schoonmaakt. Gebruik geen vloeibare schoonmaakmiddelen of spuitbussen. Gebruik een vochtige doek.

Water en vocht

Gebruik dit product niet in de buurt van water, bijvoorbeeld een bad, wastafel, aanrecht, wasbak, in een natte kelder of bij een zwembad. Als u het product van een koude naar een warme omgeving verplaatst, kan condensatie worden gevormd op bepaalde interne onderdelen. Laat het product drogen voordat u het opnieuw inschakelt.

Classificaties van aansluitingen

De externe aansluitingen aan de achterkant van het product hebben de volgende classificaties:

- > DSL, ADSL, SHDSL, VDSL, Line: TNV-schakeling blootgesteld aan overspanningen (TNV-3)
- > ISDN: SELV-schakeling
- > PSTN, FXO: TNV-schakeling blootgesteld aan overspanningen (TNV-3)

- > Phone, VoIP, FXS: TNV-schakeling niet blootgesteld aan overspanningen (TNV-2)



WAARSCHUWING

- > De Phone-, VoIP-, FXS-poort wordt geclassificeerd als een **TNV-3** circuit wanneer deze intern is aangesloten op de PSTN-, FXO-poort, bijvoorbeeld wanneer het apparaat is uitgeschakeld.
- > Als het product is voorzien van een USB-interface (slave en/of master) of een type connector met metalen afscherming, mag de Phone-, VoIP-, FXS-poort niet met een hulpmiddel (bijvoorbeeld een externe telefoonkabel) op de PSTN- of DSL-, ADSL-, SHDSL-, VDSL-, Line-poort worden aangesloten.
- > Alle overige interfacepoorten (zoals Ethernet, 10/100Base-T/MDI(-X), USB, Console, Craft, enzovoort), inclusief de laagspanningsingang van de netvoeding: SELV-schakelingen.

Elektrische voeding

De elektrische voeding van het product moet overeenkomen met de specificaties op de labels.

De netvoeding moet van het type "Klasse II" zijn met een gelimiteerd uitgangsvermogen, in overeenstemming met de voorschriften van IEC60950-1 / EN60950-1, Artikel 2.5 en met een nominale waarde zoals vermeld op het label op uw product. De voeding moet zijn getest en goedgekeurd conform nationale of lokale normen.

Het gebruik van andere typen voedingsbronnen is niet toegestaan. Als u niet zeker weet welk type voeding u moet gebruiken, raadpleegt u de gebruikersdocumentatie bij het product of neemt u contact op met uw lokale dealer.

USB

Het product dient aangesloten te worden aan een geïdentificeerde voedingsbron met gelimiteerd uitgangsvermogen.

Telefoonkabel



LET OP

Om brandgevaar te beperken, moet u voor de telefoonlijn een kabel met een minimale draaddoorsnede AWG 26 (Amerikaanse kabeldiktemaat) gebruiken.

Sluit de telefoonkabel alleen op de PSTN-, FXO-, DSL-, ADSL-, SHDSL-, VDSL- of Line-connector van het product aan. Sluit de telefoonkabel nooit op een andere connector van het product aan.

Volg de instructies voor het aansluiten van het product in dezelfde volgorde als aangegeven in de installatiehandleiding.

Centrale splitter / distributiefilter(s) (indien van toepassing)

Als u uw telefoon via dezelfde lijn wilt gebruiken, moet voor optimale DSL-prestaties een centrale splitter of distributiefilter(s) worden geïnstalleerd.

Afhankelijk van de DSL-configuratie en het type splitter of filter moet de installatie door een erkende onderhoudstechnicus worden uitgevoerd. Neem contact op met het telefoonbedrijf of de DSL-serviceprovider voor instructies.

Toegankelijkheid

De netvoeding met rechtstreekse aansluiting wordt gebruikt als uitschakelapparaat. Sluit de voeding aan op een stopcontact dat goed toegankelijk is en zich in de buurt van de apparatuur bevindt.

Overbelasten

Stopcontacten en verlengsnoeren mogen niet overbelast worden omdat dit het risico op brand of elektrische schok verhoogt.

Onderhoud

U vermindert het risico op een elektrische schok door het product niet zelf te demonteren. De interne onderdelen kunnen niet door de gebruiker worden vervangen; het is daarom niet nodig om het apparaat te openen. U kunt worden blootgesteld aan gevaarlijke spanningsniveaus door het apparaat te openen of de behuizing te verwijderen. Als het apparaat op onjuiste wijze opnieuw wordt gemonteerd, kan het gebruik een elektrische schok veroorzaken. Neem contact op met een erkende onderhoudstechnicus voor onderhoud of reparatie van de apparatuur.

Schade waarvoor een onderhoudstechnicus is vereist

Onder de volgende omstandigheden ontkoppelt u het product van de netspanning en neemt u contact op met een erkende onderhoudstechnicus:

- > Als de voeding of de stekker beschadigd is.
- > Als de netsnoeren beschadigd of gerafeld zijn.
- > Als vloeistof in het apparaat is gesijpeld.
- > Als het product is blootgesteld aan regen of water.
- > Als het product niet normaal functioneert.
- > Als het product is gevallen of is beschadigd.
- > Als er duidelijke tekenen van oververhitting zijn.
- > Als de werking van het product duidelijk is gewijzigd.

Koppel het product onmiddellijk los van de netspanning als het een brandgeur verspreidt of rookt. U mag het product in geen geval zelf openen vanwege het risico op elektrocutie.

Juridische Kennisgeving

U moet u bij de installatie en het gebruik van dit apparaat exact aan de instructies van de fabrikant houden, die worden beschreven in de gebruikersdocumentatie die is meegeleverd met uw product.

Lees, voordat u begint met de installatie of het gebruik van dit product, de inhoud van dit document zorgvuldig door en bepaal of er apparaatspecifieke beperkingen of regels gelden in het land waar u dit product wilt gebruiken.

In sommige situaties of omgevingen is het gebruik van draadloze apparaten mogelijk beperkt door de eigenaar van het gebouw of door verantwoordelijke vertegenwoordigers van de organisatie.

Als u niet zeker weet welke richtlijnen van toepassing zijn op het gebruik van draadloze apparatuur in een specifieke organisatie of omgeving (bijvoorbeeld luchthavens), wordt u geadviseerd toestemming voor gebruik van dit apparaat te vragen voordat u het inschakelt.

THOMSON is niet verantwoordelijk voor eventuele verstoringen van het radio- of televisieverkeer die worden veroorzaakt door ongeautoriseerde aanpassing van het apparaat of door de vervanging of aansluiting van andere kabels en apparaten dan zijn gespecificeerd door THOMSON. Het is de verantwoordelijkheid van de gebruiker om zorg te dragen voor het opheffen van de storing die wordt veroorzaakt door dergelijk ongeautoriseerde aanpassingen, vervangingen of aansluitingen.

THOMSON en diens geautoriseerde wederverkopers of distributeurs zijn niet aansprakelijk voor enige schade of overtreding van voorschriften van de overheid die het gevolg is van het niet naleven van deze richtlijnen.

Overeenstemmingsverklaring van de Europese Gemeenschap



Hierbij verklaart THOMSON dat dit product in overeenstemming is met de essentiële eisen en de andere relevante bepalingen van Richtlijn 1999/5/EG van het Europees Parlement en de Raad.

Deze apparatuur mag worden gebruikt in alle lidstaten van de Europese Gemeenschap en alle landen die lid zijn van de Europese Vrijhandelsorganisatie.

De complete overeenstemmingsverklaring vindt u op www.thomson-broadband.com.

Indien het product uitgerust is met een IEEE 802.11b/IEEE802.11g/IEEE802.11n draadloze zender/ontvanger:

- > dient het enkel en alleen binnenshuis gebruikt te worden.
- > is het in overeenstemming met de minimale beperkingen en limitaties zoals aangegeven in de Europese aanbeveling (1999/519/EC) betreffende de beperking van blootstelling van de bevolking aan elektromagnetische velden.

THOMSON Telecom Belgium

Prins Boudewijnlaan 47
2650 Edegem

www.thomson-broadband.com

© Thomson 2008. All rights reserved.
E-DOC-SAF-20070614-0001 v2.0.



DSL3625264A



PAP