

Bluetooth™ USB Dongle

Model Name: BT3030

Quick Installation Guide



January 2002

©2002 by TECOM CO., LTD. All rights reserved.

Printed in Taiwan

BLUETOOTH is a trademark owned by Bluetooth SIG., U.S.A. and licensed to TECOM Co., Ltd.
All Brand names and trademarks are the property of their respective owners

Introduction

About Bluetooth™

Bluetooth™ is a worldwide short-range wireless communication technology, which eliminates and replaces wires and cables between devices, creates wireless networks instantly, and delivers the ultimate synchronicity between all your personal devices.

Product Features

The BT3030 Bluetooth™ USB Dongle is compliant with Bluetooth standard to assist you to enjoy the wireless data connectivity experience among different Bluetooth enabled devices such as desktop & notebook PC, printer, or PDA. The product provides the following features:

- Compliant with Bluetooth Specification V.1.1
- USB bus-powered; an external power supply is not required
- Supports device drivers for: Microsoft Windows 98SE, Microsoft Windows ME, Microsoft Windows 2000, Windows XP
- Supports 20 dBm (Class 1) Output Power; operating distance up to 100 meters
- Supports many user-friendly application profiles for LAN access, files transfer, dial-up networking, and data synchronization between devices etc.
- Supports data rates up to 723 Kbps

Product Quick Installation Guide

- Check Product Contents
- Insert Software Installation CD to install software
- Plug in BT3030 to your computers USB port to install driver
- Configuring the application parameters
- Enjoy the Bluetooth connectivity

QUICK INSTALLATION AND SOFTWARE SETUP

Check Product Contents

- 1 Quick Installation Guide
- 1 Bluetooth USB Dongle
- 1 CD-ROM for Installation Software & Documentation
- 1 USB extension cable

System Requirement

To run the software properly, please make sure your Desktop PC or Notebook PC meets the following requirements:

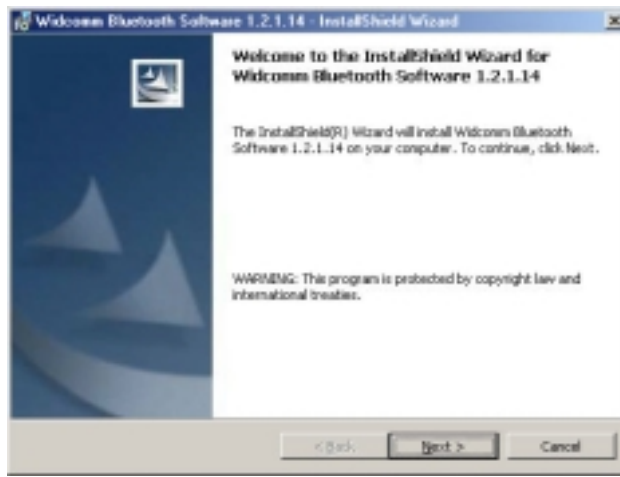
- Hardware: Pentium Class PC, CPU speed 200 MHz or above
- RAM: 128MB or above
- USB port, supports USB 1.1 standard
- Operating System: Windows 98SE, or Windows Me, or Windows 2000, or Windows XP.

Software Setup & Driver Installation

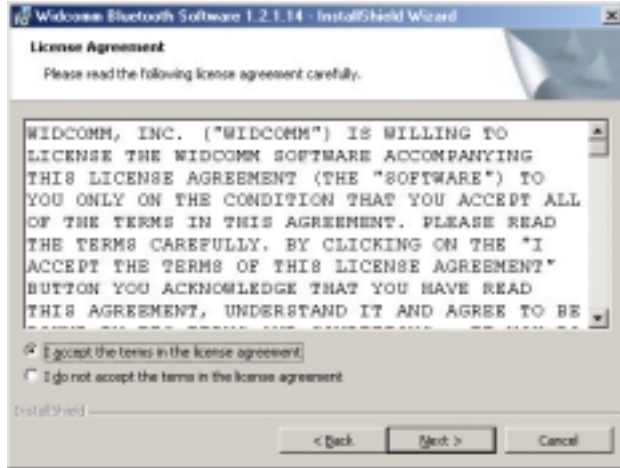
To install the Bluetooth Software for Windows, follow the instructions described below:

Note: When installing under Windows XP, the installation process might be a slightly different in from installing under Windows 98SE, ME, and 2000.

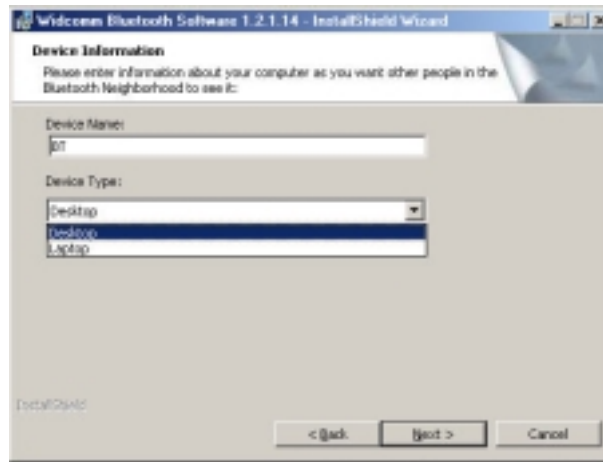
1. Before software installation, do not insert Bluetooth USB Dongle into the USB port.
2. **Insert** the Software Installation CD-Rom into the CD-Rom drive.
3. A Software Installation Wizard window appears, click on **Next** to begin the process.



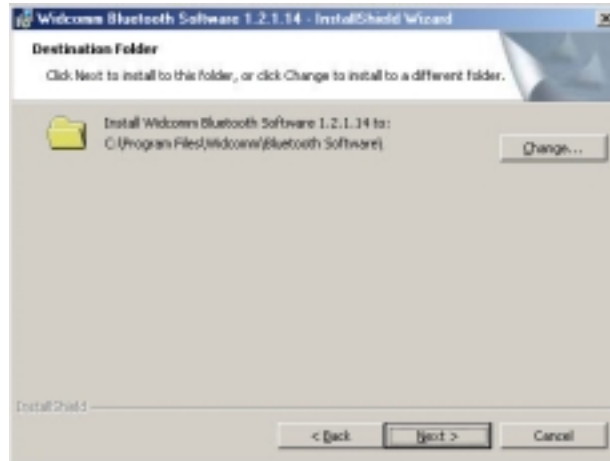
4. Choose "I accept the terms in the license agreement" to accept the license agreement; click on **Next**.



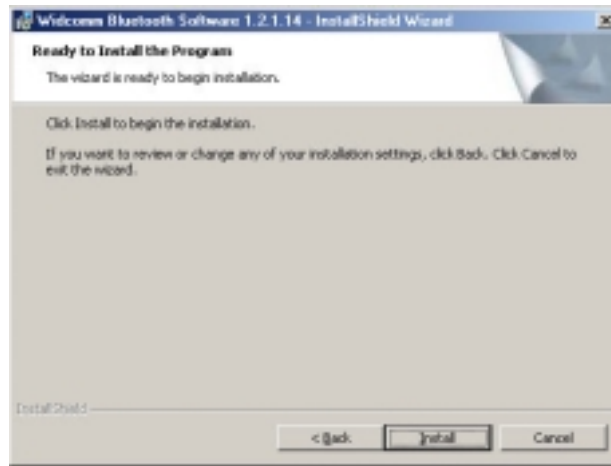
5. Define the name of the device and to select the type of device; click on **Next**.



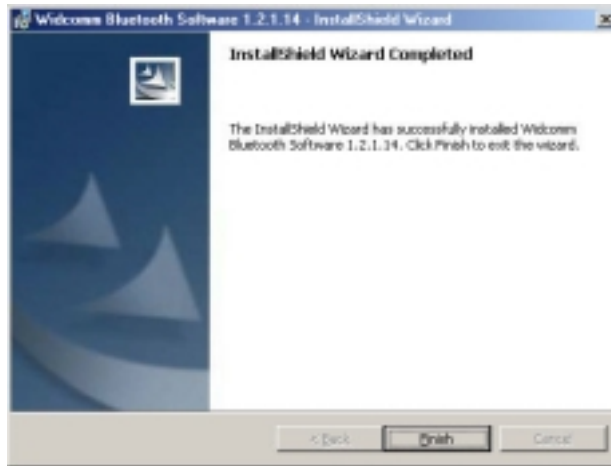
6. Specify the location of the driver & software to be installed; click on **Next**.



7. Confirm the device driver software is ready to be installed; click **Install**.



8. Confirm the completion of installation; click **Finish** and then start the system.



Important Information!

TECOM Model BT3030 must be installed and used in strict accordance with the manufacturer's instructions as described in the user documentation that comes with the product. The device complies with the following radio frequency and safety standards.

Federal Communications Commission (FCC) Compliance Notice Radio Frequency Notice

This device complies with part 15 of the FCC Rules. Operation is subject to the following two conditions:

1. This device may not cause harmful interference.
2. This device must accept any interference received, including interference that may cause undesired operation.

Note:

This equipment has been tested and found to comply with the limits for a Class B digital device, pursuant to part 15 of the FCC Rules. These limits are designed to provide reasonable protection against harmful interference in a residential installation. This equipment generates, uses and can radiate radio frequency energy and, if not installed and used in accordance with the instructions, may cause harmful interference to radio communications. However, there is no guarantee that interference will not occur in a particular installation. If this equipment does not cause harmful interference to radio or television reception, which can be determined by turning the equipment off and on, the user is encouraged to try to correct the interference by one or more of the following measures: (1) Reorient or relocate the receiving antenna, (2) Increase the separation between the equipment and receiver, (3) Connect the equipment into an outlet on a circuit different from that to which the receiver is connected, (4) Consult the dealer or an experienced radio/TV technician for help.

Department of Communications-Canada Canadian Compliance Statement

This Class B Digital apparatus meets all the requirements of the Canadian Interference Causing Equipment Regulations. Cet appareil numérique de la classe B respect les exigences du Règlement sur le matériel brouilleur du Canada.

This device complies with Class B Limits of Industry of Canada. Operation is subject to the following two conditions: 1) this device may not cause harmful interference, and 2) this device must accept any interference received, including interference that may cause undesired operation.

This device is certified to the requirements of RSS-139-1 and RSS-210 for 2.4 GHz spread spectrum devices. The use of this device in a system operating either partially or completely outdoors may require the user to obtain a license for the system according to the Canadian regulations. For further information, contact local Industry Canada office.

EN 55 022 Statement: CE Warning

This is to certify that the Model BT3030 are shielded against the generation of radio interference in accordance with the application of Council Directive 89/336/EEC, Article 4a. Conformity is declared by the application of EN55 022 Class B. This is a Class B product. In a domestic environment, this product may cause radio interference, in which case the user may be required to take adequate measures.

CE Declaration of Conformity

For the following equipment:
Product Name: Bluetooth USB Dongle
Model Name: BT3030

Is herewith confirmed to comply with the requirements set out in the Council Directive on the Approximation of the Laws of the Member States relating to 1999/5/EC R&TTE Directive. For the evaluation regarding the Directives, the following standards were applied: ETSI 300

FROM: _____

PLEASE PLACE

STAMP HERE

TO: TECOM Co., LTD
IMSD
23, R&D Road 2, Science-Based Industrial Park
Hsin-Chu 300
Taiwan

Limited Hardware Warranty!

Subject to the provisions described below, this TECOM product is protected for one (1) year against defects in material and workmanship.

If the product fail to perform as described above within the warranted period, it will be repaired or replaced with the same or functionally equivalent product by TECOM, at its discretion, free of charge provided you: (1) have, within thirty (30) days of the original date of purchase, completed and returned the Registration Card which accompanied the products when shipped, (2) return the failed product to TECOM designated repair facility with shipping charge prepaid, and (3) provide TECOM with proof of the original date of purchase. Repaired or replacement products will be returned to you with shipping charges prepaid.

Replacement products may be refurbished or contain refurbished materials. If TECOM by its sole determination, is unable to repair or replace the defective product, it will refund the depreciated purchase price of the product.

This warranty does not apply if, in the judgment of TECOM, the product fails due to damage from shipment, handling, storage, accident, abuse or misuse, or if it has been used or maintained in a manner not conforming to product manual instructions, has been modified in any way, or has had any serial number removed or defected. Repair by anyone other than TECOM or an approved agent will void this warranty. The maximum liability of TECOM under this warranty is limited to the purchase price of the product covered by the warranty.

Prior to returning any defective product, the end customer or the reseller from whom the end customer original purchased the product must obtain a Return Materials Authorization (RMA) number from TECOM. All defective products should be returned to TECOM with shipping charges prepaid.

Except as specifically provided in this statement or as required by law, the warranties and remedies stated above are exclusive and in lieu of all others, oral or written, express or implied. Any and all other warranties, including implied warranties of merchantability, fitness for a particular purpose and non-infringement of third party rights are expressly excluded. TECOM shall not under any circumstances be liable to any person for any special, incidental, indirect or consequential damages, including without or revenues or costs of replacement goods, even if TECOM is informed in advance of the possibility of such damages.

REGISTRATION CARD

Please complete the information below.

Name: _____
Title: _____
Company Name: _____
Address (1): _____
Address (2): _____
Telephone: _____
E-mail : _____
Purchase Date: _____

Where did you purchased the product?

Mail order
 Reseller/VAR
 Retail Store
 Internet

Reseller Name: _____
Reseller Address _____
Telephone: _____
Fax: _____

What PC will this TECOM product be used?

Desktop PC
 Notebook PC

Where will the product primarily be used?

Home
 Office
 Personal Use

** PLEASE ATTACH A PHOTOCOPY OF RECIPET OF ORIGINAL PURCHASE! **

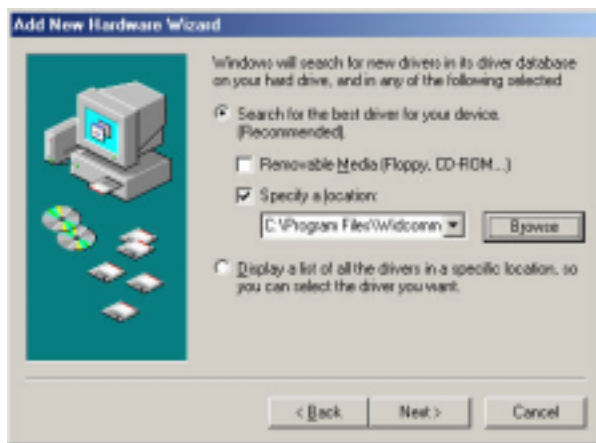
9. The system has restarted; **insert** Bluetooth USB Dongle into USB port, a new USB device is found.



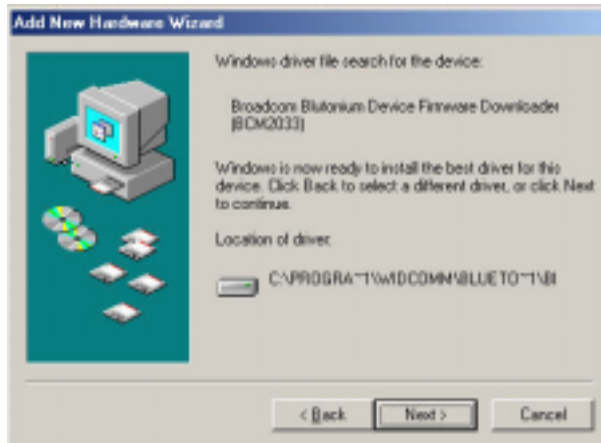
10. Choose "*Specify the location of the driver (advanced)*"; then click on **Next**.



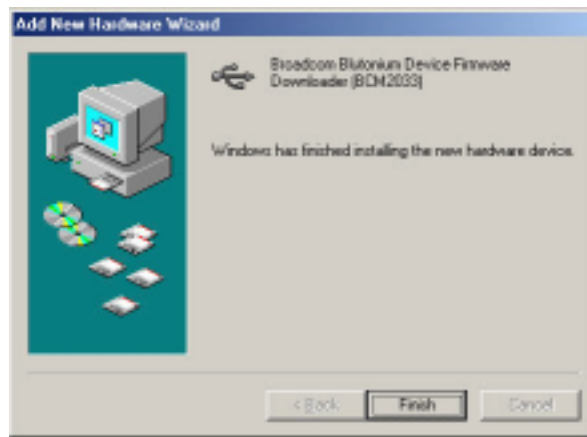
11. Select the location of device driver, please specify "C:\Program Files\Widcomm\Bluetooth Software\bin\", click on **Next**.



12. Confirm the device driver found; click on **Next**.



13. Confirms the completion of driver installation; click on **Finish**.



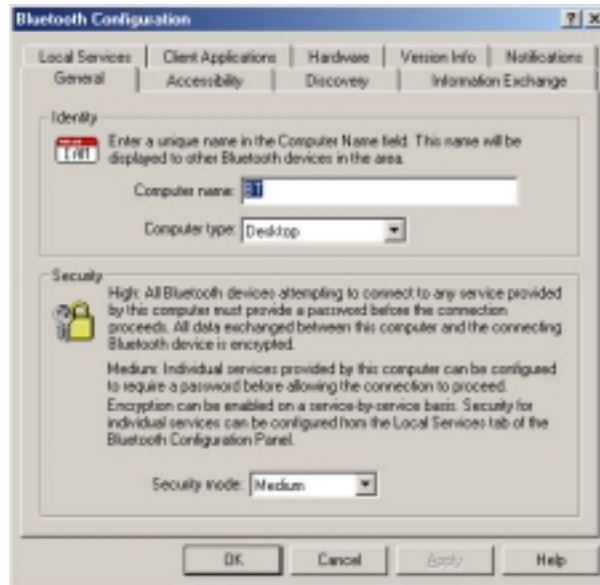
14. A “My Bluetooth Places” icon appears on the desktop.

Note: **More detailed explanations and the operation of each Bluetooth services can be found in User’s Manual in the CD-ROM.**



Quick Guide to Bluetooth Configuration Settings

1. To customize the configuration settings of Bluetooth Software for Windows, click on Bluetooth Icon on the right hand side of task bar of your PC desktop. “Bluetooth Configuration” window appears to allow you to customize Bluetooth configuration settings of “Explore”, “Setup” or “Services”. There are two extended items, “Security” and “Configuration”, of “Setup” option.
2. Click on “Configuration”, the “General” Section of Bluetooth Configuration allows you to customize the device’s user name, type, and security type.
3. The “Accessibility” Section allows you to specify which individual devices are allow to access to the user’s device.



More detailed explanations and the operation of each Bluetooth services can be found in User’s Manual in the CD-ROM.

Quick Guide to Use “My Bluetooth Places” Program

The “My Bluetooth Places” program provides a quick and easy way to perform different application services through Bluetooth connection. Variety of Bluetooth Services can be found in the “My Bluetooth Places” program.

To use the “My Bluetooth Places” program, follow the instructions described below:

1. Click “**My Bluetooth Places**” on PC desktop, the “My Bluetooth Places” window appears, three icons, “**My Device**”, “**Entire Bluetooth Neighborhood**” & “**Add Bluetooth Connection**” appears inside the window.
2. Click **My Device** from the “Bluetooth Neighborhood” window to see which application services is available to the other devices. The icon with “**X**” or without “**X**” indicates the Bluetooth service availability of this device.
3. Click on **Entire Bluetooth Neighborhood** from the “My Bluetooth Places” window to search for available devices. Once Bluetooth devices are detected, icons with device names will be displayed on the screen; click on each icon to see what services are available to you. Click on each available service to begin with the service.
4. Click on any available device, for example, a device name “BT98” from the “My Bluetooth Places” window to see which services are available to you. Double click on each icon to begin with different services

TECOM CO., LTD

Headquarter
Hsin-chu, Taiwan

23 R&D Road 2, Science-Based Industrial Park,
Hsin-Chu,
Taiwan R.O.C.
Tel: +886-3-5775141
Fax: +886-3-5776855
www.tecom.com.tw
E-mail:sales@tecom.com.tw

Overseas Sales Offices

Taipei, Taiwan

No.19-8, 6F San-Chung Road, Nankang
District, Taipei, Taiwan
Tel: +886-2-2655-1000
Fax: +886-2-2655-1349

China

E#202 NO.20 Guandongian St. Chaoyang,
District, Beijing, China
Post Code:100020
Tel: +86 10 65032280~1
Fax: +86 10 6503 2258;
E-mail: tecombj@public.bta.net.cn

Japan

4F, Marushin Bldg. 1-6-2 Hamamatsucho,
Minato-ku, Tokyo, Japan 105-0013
Tel: +81 33435 7817
Fax: +81 33578 8381

North America

TECOM (USA) Group, Inc.
Add: 3 Corporate Park, Suite 168, Irvine, Ca.
92606 USA
Tel: 1-949-474-1535; Fax: 1-949-474-1539
E-mail:sales@tecom.com.tw

Customer and Technical Supporting Centers

North America

21902 64th Ave. West #1, Mountlake, Terrace, WA
98043.
Tel: (206) 229-9979
E-mail : ytwang@tecom.com.tw

Europe & Asia

23 R&D Road 2, Science-Based Industrial Park,
Hsin-Chu, Taiwan R.O.C.
Tel: +886-3-5775141
Fax: +886-3-5776855
E-mail:sales@tecom.com.tw

FCC Warning:

Changes or modifications to this unit not expressly approved by the party responsible for compliance could void the user authority to operate the equipment.

This device complies with Part 15 of the FCC Rules. Operation is subject to the following two conditions: (1) this device may not cause harmful interference, and (2) this device must accept any interference received, including interference that may cause undesired operation.

The users manual or instruction manual for an intentional or unintentional radiator shall caution the user that changes or modifications not expressly approved by the party responsible for compliance could void the user's authority to operate the equipment.

NOTE: This equipment has been tested and found to comply with the limits for a Class B digital device, pursuant to Part 15 of the FCC Rules. These limits are designed to provide reasonable protection against harmful interference in a residential installation. This equipment generates, uses and can radiate radio frequency energy and, if not installed and used in accordance with the instructions, may cause harmful interference to radio communications.

However, there is no guarantee that interference will not occur in a particular installation. If this equipment does cause harmful interference to radio or television reception, which can be determined by turning the equipment off and on, the user is encouraged to try to correct the interference by one or more of the following measures:

- Reorient or relocate the receiving antenna.
- Increase the separation between the equipment and receiver.
- Connect the equipment into an outlet on a circuit different from that to which the receiver is needed.
- Consult the dealer or an experienced radio/TV technician for help.

**CAUTION:**

1. To comply with FCC RF exposure compliance requirements, a separation distance of at least 20 cm must be maintained between the antenna of this device and all persons.
2. This Transmitter must not be co-located or operating in conjunction with any other antenna or transmitter