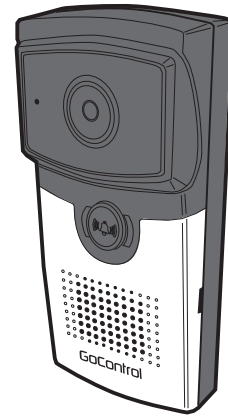
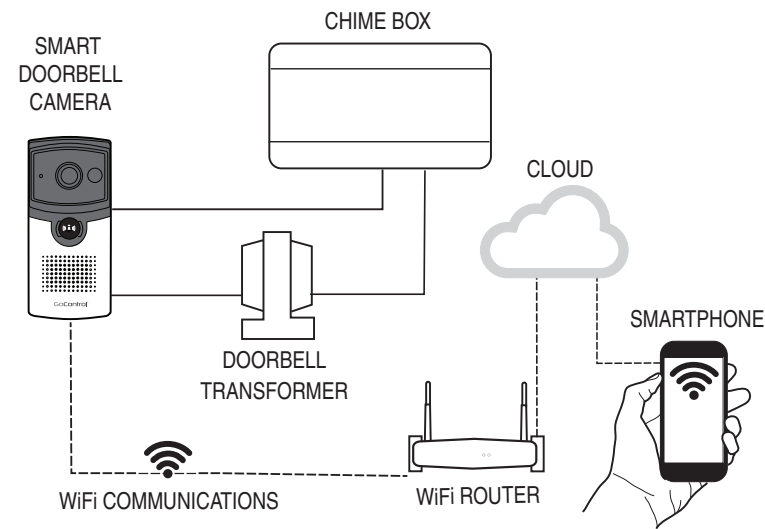


GC-DBC-1

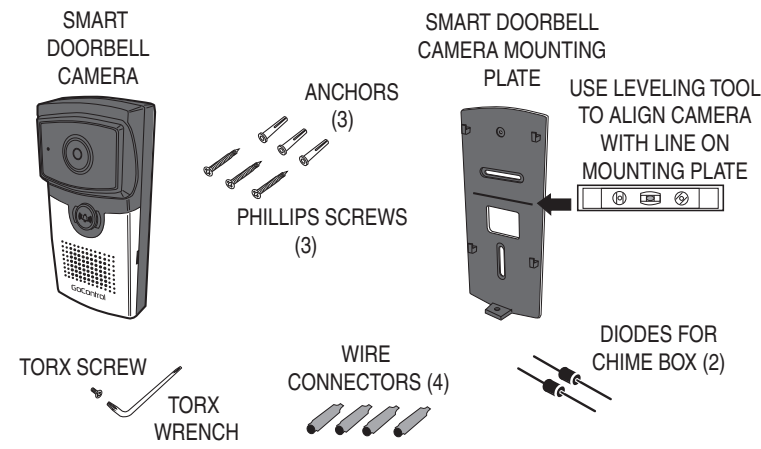


Installation Instructions
GoControl™

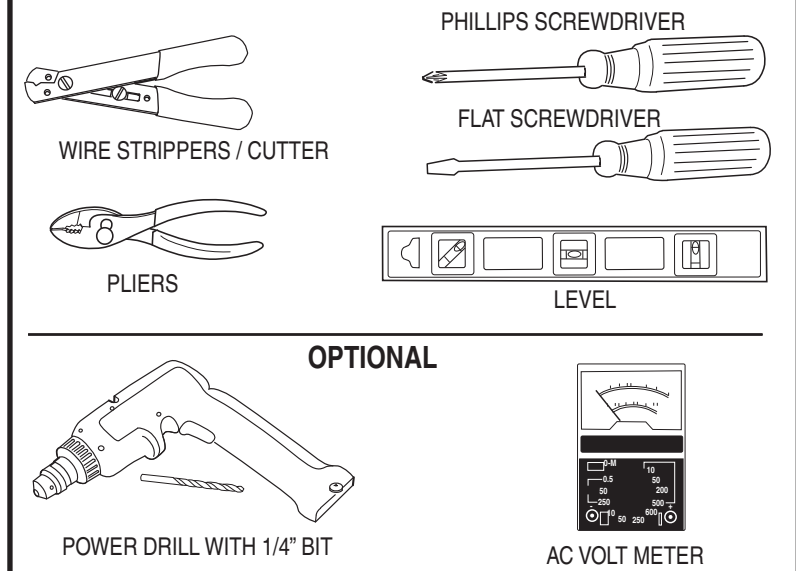
System Description



Doorbell Camera Components

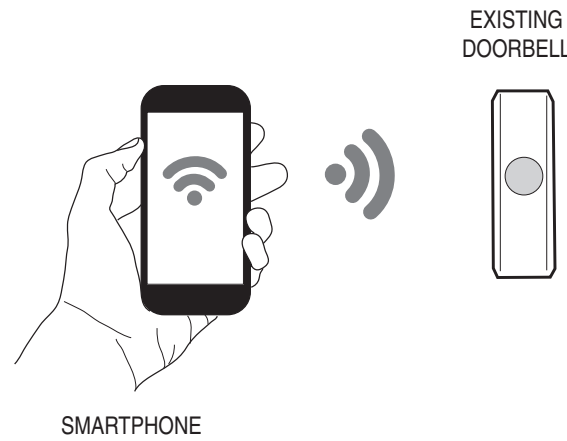


Tools For Installation



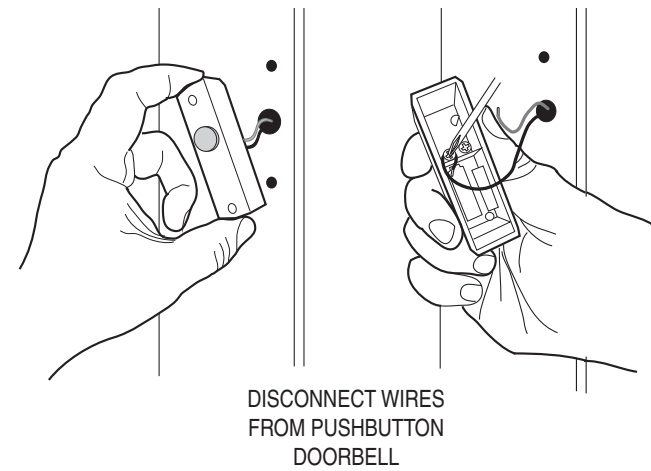
1 Prepare for Installation

- Go to existing doorbell location.
- Use a Smartphone connected to the installations WiFi router to confirm adequate signal strength (2 - 3 bars).



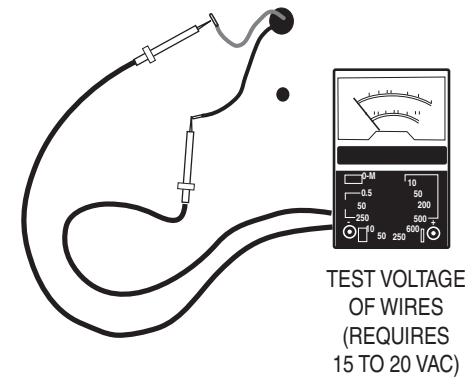
2 Existing Doorbell Removal

- Remove existing doorbell pushbutton from location.
- Disconnect wires from back of pushbutton.

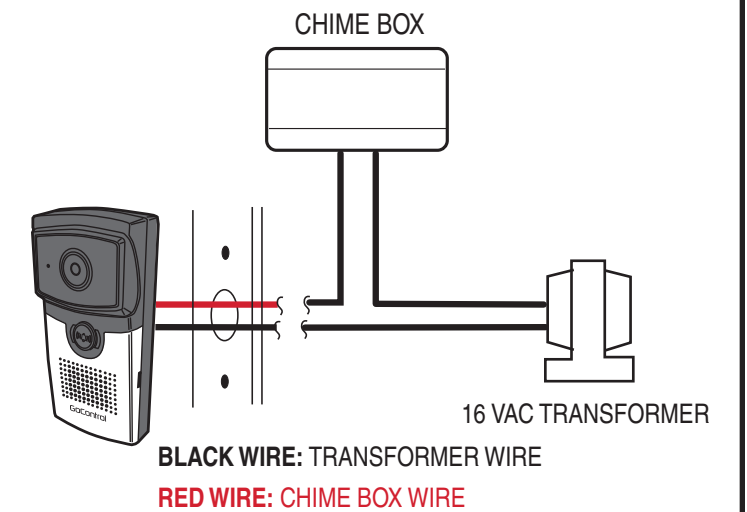


3 Measure Voltage

- Measure voltage of doorbell wiring with AC Volt Meter.
- Doorbell camera works best with 15 to 20 VAC.
- ✓ **NOTE:** It is recommended to **TURN POWER OFF** after verifying voltage.

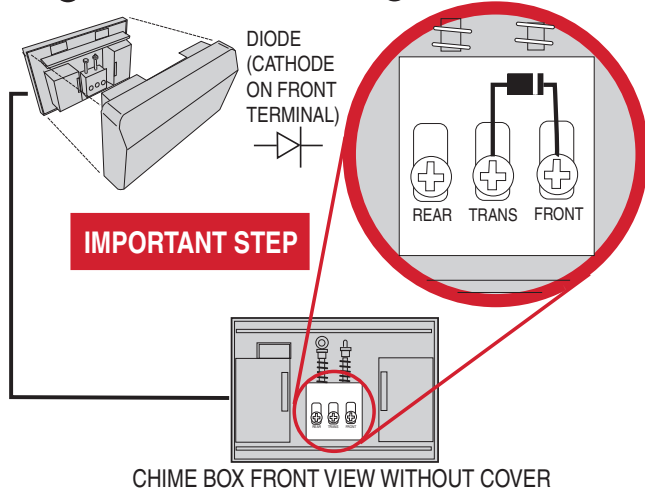


4 System Overview



5 Installing Diode in Chime Box

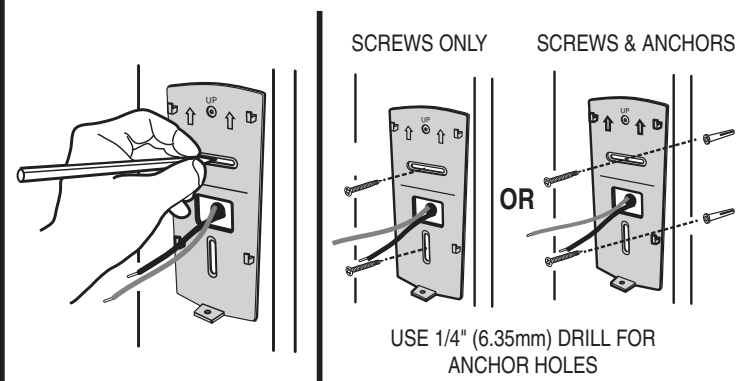
- 1 OPEN CHIME BOX
- 2 INSTALL DIODE AS SHOWN



✓ **NOTE:** Not compatible with electronic chimes

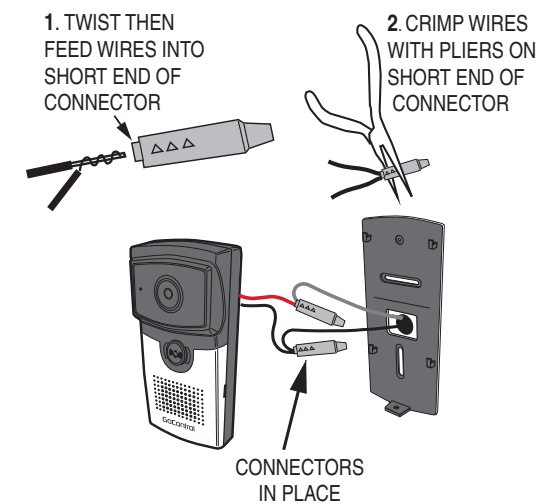
6 Mounting Doorbell Camera Plate

- Use mounting plate as guide to mark holes.

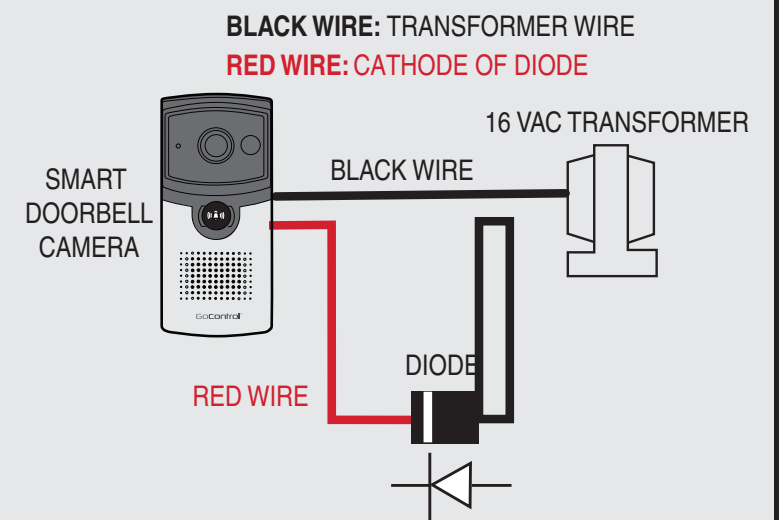


7 Wiring Doorbell Camera

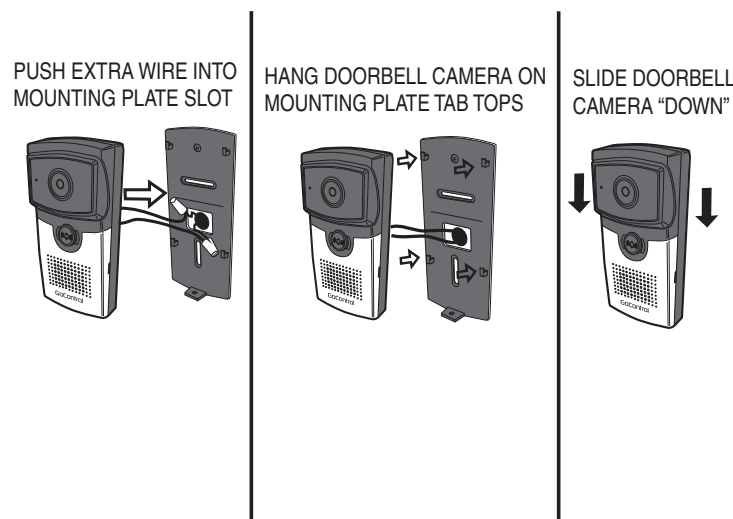
- Connect doorbell wires using weather-resistant wire connectors (included).



Wiring Camera WITHOUT Chime (OPTIONAL)



8 Camera Installation to Mounting Plate



9 TEST Doorbell Camera

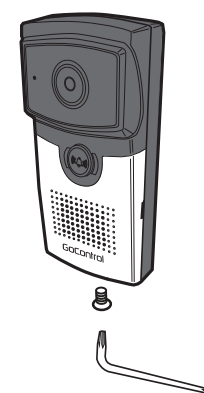
- TURN power ON.
- Press doorbell button.
- If chime rings normally, continue to next step.
- If chime DOES NOT ring normally, go to Step 7, reverse wiring.



✓ **Note:** If the doorbell chime does not sound with the doorbell button pressed, it means that the red and black wires need to be reversed.

10 Camera Installation / Security Screw

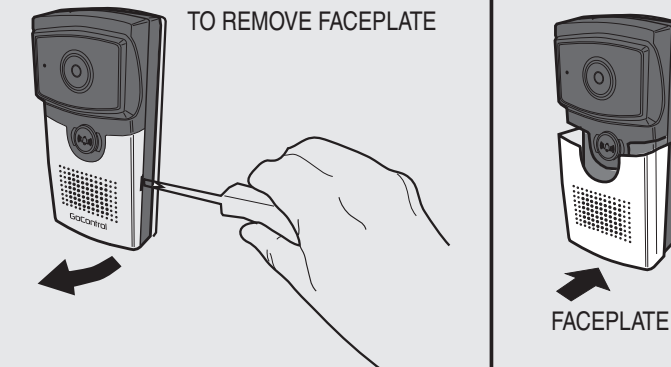
SCREW IN BOTTOM OF DOORBELL CAMERA



Camera Faceplate Change-Out (OPTIONAL)

- Order Model GC-DBC-FP Faceplate Pak to change out doorbell camera colors.
- Use a flathead screwdriver to remove plate.

USE FLATHEAD SCREWDRIVER TO REMOVE FACEPLATE



11 Setup Operation

1 Download Smartphone App

On the resident's Smartphone, download and install the "GoControl MyDoorbell" App from the Google Play Store (for Android phones) or from Apple App Store (for iOS phones).

2 Create an Account

With the Smartphone connected to the local network router via WiFi, select "Create an Account." Enter a name, valid email address, and password for the account, then select "Create an Account."

Receive the verification e-mail from mydoorbell@nortek.com with the activation code. NOTE: Check junk/spam email folder. This code expires in one hour after the email is sent. Enter the activation code in the app.

3 Connecting to Doorbell Camera

The doorbell camera should be in Discovery mode and the button indicator should flash red and green. If the indicator does not flash, try pressing the call button for ten to fifteen seconds to enter Discovery mode.

4 Follow Steps on App for Final Setup.

Indicators Status

STATUS	COLOR
Powering Up	Solid Red
Discovery Mode	Flashing Green / Red
Connecting to Network	Flashing Green
Connected to Network (Normal Status)	Solid Green
Session in Progress	Flashing Green
Not Connected to Network	Flashing Red (Slow)
Firmware Update	Flashing Red (Fast)

Doorbell Camera Troubleshooting

MY DOORBELL APP

Q: The APP doesn't save photos or videos on my smartphone?

A: Please ensure you have sufficient memory on your smart device. Also ensure permissions are enabled on the APP to access the device memory.

Q: I did not receive the Authentication Code when creating an account?

A: Please check your email 'junk' box folder for an email from:

mydoorbell@nortek.com

NETWORK

Q: The doorbell doesn't register on the Wi-Fi network. Why?

A: The smart doorbell camera may be out of range of your Wi-Fi network. Move the router or install a Wi-Fi extender. Note, the Doorbell Camera supports 2.4Ghz networks only.

Q: The smart Doorbell Camera loses network connectivity?

A: The smart Doorbell Camera may be out of range of your WiFi network. Move the router or install a Wi-Fi extender.

Doorbell Camera Troubleshooting

POWER

Q: The doorbell cycles off and on?

A: Check that the doorbell camera power wires are securely connected. The existing doorbell wiring may be bad. With a chime box installation, you may need to reverse the doorbell wires to the wire connectors. Refer to Step 7.

Q: Why doesn't the doorbell camera power up?

A: Refer to installation instructions:

1. Confirm transformer power is turned ON.
2. Confirm diode is installed correctly.
3. Confirm wiring / connections are correct and secure.
4. Confirm transformer power is 15 to 20 VAC.

Regulatory Information

The GC-DBC-1 is certified to comply with applicable FCC and IC rules and regulations governing RF and EMI emissions.

This device complies with Part 15 of the FCC Rules. Operation is subject to the following two conditions: (1) This device may not cause harmful interference, and (2) This device must accept any interference received, including interference that may cause undesired operation.

FCC Notice

This equipment has been tested and found to comply with the limits for a Class B digital device, pursuant to Part 15 of the FCC Rules. These limits are designed to provide reasonable protection against harmful interference in a residential installation.

This equipment generates, uses, and can radiate radio frequency energy and, if not installed and used in accordance with the instructions may cause harmful interference to radio communications. However, there is no guarantee that interference will not occur in a particular installation. If this equipment does cause harmful interference to radio or television reception, which can be determined by turning the equipment off and on, the user is encouraged to try to correct the interference by one or more of the following measures:

- Reorient or relocate the receiving antenna.
- Increase the separation between the equipment and receiver
- Connect the equipment into an outlet on a circuit different from that to which the receiver is connected.
- Consult the dealer or an experienced radio/TV technician to help.

Regulatory Information

Changes or modifications not expressly approved by the party responsible for compliance could void the user's authority to operate the equipment.

IMPORTANT NOTE:

To comply with the FCC RF exposure compliance requirements, the antenna(s) used for this transmitter must be installed to provide a separation distance of at least 20 cm from all persons and must not be co-located or operating in conjunction with any other antenna or transmitter. No change to the antenna or the device is permitted. Any change to the antenna or the device could result in the device exceeding the RF exposure requirements and void user's authority to operate the device.

IC Notice

This Class B digital apparatus complies with Canadian ICES-003

Cet appareil numérique de la classe B est conforme à la norme NMB-003 du Canada. Le présent appareil est conforme aux CNR d'Industrie Canada applicables aux appareils radio exempts de licence. L'exploitation est autorisée aux deux conditions suivantes : (1) l'appareil ne doit pas produire de brouillage, et (2) l'utilisateur de l'appareil doit accepter tout brouillage radioélectrique subi, même si le brouillage est susceptible d'en compromettre le fonctionnement.

This device complies with the Industry Canada license exempt RSS standard(s). Operation is subject to the following two conditions: (1) this device may not cause interference, and (2) this device must accept any interference, including interference that may cause undesired operation of the device.

Product Warranty

This Nortek Security & Control product is warranted against defects in material and workmanship for twelve (12) months. **This warranty extends only to wholesale customers** who buy direct from Nortek Security & Control or through Nortek Security & Control's normal distribution channels. **Nortek Security & Control does not warrant this product to consumers.** Consumers should inquire from their selling dealer as to the nature of the dealer's warranty, if any. **There are no obligations or liabilities on the part of Nortek Security & Control for consequential damages arising out of or in connection with use or performance of this product or other indirect damages with respect to loss of property, revenue, or profit, or cost of removal, installation, or reinstallation.** All implied warranties, including implied warranties for merchantability and implied warranties for fitness, are valid only until Warranty Expiration Date as labeled on the product. **This Nortek Security & Control LLC Warranty is in lieu of all other warranties express or implied.**

All products returned for warranty service require a Return Authorization Number (RA#). Contact Nortek Security & Control Returns at 1-855-546-3351 for an RA# and other important details.

Accessories

MODEL	DESCRIPTION
GC-DBC-C1	GoControl wired door chime
GC-DBC-C2	GoControl WiFi door chime 120VAC Plug-IN
GC-DBC-FP	GoControl Doorbell Camera Faceplate Pak: Oil Rubbed, Venetian Bronze, Brass, White, Charcoal

NORTEK
 SECURITY & CONTROL
 USA & Canada (800) 421-1587 & (800) 392-0123
 (760) 438-7000 - Toll Free FAX (800) 468-1340
 www.nortekcontrol.com