

3 Safety Instructions

Translated versions of the following safety warnings are provided in *Cisco USC 9330 Regulatory Compliance and Safety Information*, located on Cisco.com.



Warning

IMPORTANT SAFETY INSTRUCTIONS

This warning symbol means danger. You are in a situation that could cause bodily injury. Before you work on any equipment, be aware of the hazards involved with electrical circuitry and be familiar with standard practices for preventing accidents. Use the statement number provided at the end of each warning to locate its translation in the translated safety warnings that accompanied this device. Statement 1071

SAVE THESE INSTRUCTIONS



Warning

Read the installation instructions before you connect the system to its power source. Statement 1004



Warning

Installation of the equipment must comply with local and national electrical codes. Statement 1074



Warning

In order to comply with FCC radio frequency (RF) exposure limits, antennas should be located at a minimum of 7.9 inches (20 cm) or more from the body of all persons. Statement 332



Note

Use only with listed ITE equipment.

Cisco Systems, Inc.
www.cisco.com

Cisco has more than 200 offices worldwide. Addresses, phone numbers, and fax numbers are listed on the Cisco website at www.cisco.com/go/offices.

Cisco and the Cisco logo are trademarks or registered trademarks of Cisco and/or its affiliates in the U.S. and other countries. To view a list of Cisco trademarks, go to this URL: www.cisco.com/go/trademarks. Third-party trademarks mentioned are the property of their respective owners. The use of the word partner does not imply a partnership relationship between Cisco and any other company. (1110R)

© <year> Cisco Systems, Inc. All rights reserved.

♻️ Printed in the USA on recycled paper containing 10% postconsumer waste.



USC 9330 QUICK START CARD



1 Connect Your Small Cell



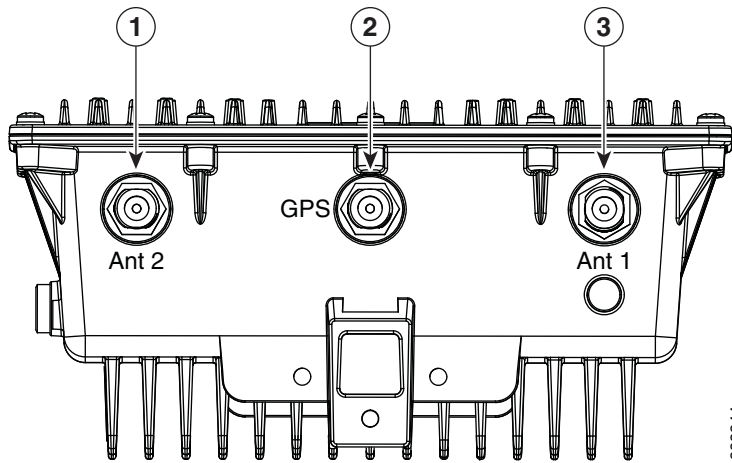
Note

Refer to the USC 9330 Installation Guide online for information regarding the optimal placement of your USC 9330 small cell.

Follow these instructions to connect your USC 9330 for use:

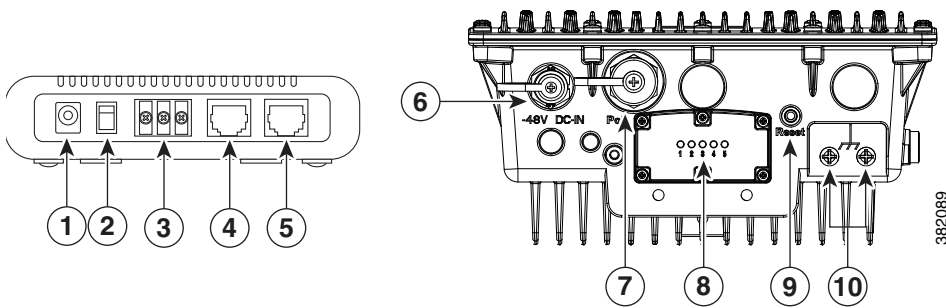
- Step 1** Screw the two antennas into the antenna ports on the top of the small cell: Ant1 port=3G antenna, Ant2 port=2G antenna.
- Step 2** Seal the antenna ports with waterproof glue or tape to prevent any moisture from penetrating.
- Step 3** Mount the USC 9330 small cell on a wall, ceiling or pipe as described in the USC 9330 Installation Guide:
<http://www.cisco.com/en/US/docs/wireless/...>
- Step 4** If you are using the DC power option:
 - a. Remove the connector cap from the DC power connector.
 - b. Connect the DC cable to the DC power connector on the USC 9330.

Figure 1 USC 9330 Antenna Ports



- c. Seal the DC power connector with waterproof glue or tape.
- d. Connect the black end of the DC cable to the block 1 (0) power output of the PSE and connect the red end of the DC cable to the block 2 (-48) power output of the PSE.

Figure 2 PSE and USC 9330 Connections



1	PSE 48V DC input	6	USC 9330 DC power connector
2	PSE power source selector switch	7	USC 9330 RJ45 connector
3	PSE terminal block	8	USC 9330 LED display
4	PSE PoE RJ45 connector	9	USC 9330 reset button
5	PSE WAN Ethernet connector	10	USC 9330 grounding screws

- Step 5** If you are using the power over Ethernet (PoE) option:
- a. Remove the connector cap from the Ethernet connector.
 - b. Connect the Ethernet cable to the Ethernet connector on the USC 9330.
 - c. Seal the Ethernet connector with waterproof glue or tape.

- d. Connect the other end of the Ethernet cable to the PoE port on the PSE.
- e. Connect the WAN port on the PSE to the Internet.

- Step 6** Connect two grounding wires to the grounding screws on the USC 9330.
- Step 7** Flip the power switch on the PSE to the appropriate location (1 for DC power and 0 for PoE). The LED on the top of the PSE unit indicates the power mode: Green: PoE; Blue: DC power.

2 Verify that the USC 9330 is Operational

The LED display is located on the bottom of your USC 9330. Note the color and activity of the LEDs and refer to this table to diagnose any problems:

Table 1 USC 9330 Status LED Indications

LED Indication	Small Cell State / Action
Power LED (1)	
Green	Power is supplied to the unit.
Status LED (2)	
Red blink 1 time in 4 seconds	No electrical connection with residential gateway. Verify connection and verify that the residential gateway is operational
Red blink 2 times in 4 seconds	No Internet connection—Verify that the residential gateway is connected to the Internet and is providing service
Red blink 3 times in 4 seconds	Local interference—phones may be too close to your small cell. If this problem persists, contact customer support.
Red blink 4 times in 4 seconds	Overheating—verify that the small cell is located where there is proper air flow
Red	Initial boot—wait up to 20 minutes; if still red, perform a reset Internal fault—Contact customer support Excessive interference—Verify whether another small cell is located in close proximity and if so, relocate unit Provisioning failure—Contact customer support
Service LED (3)	
Fast Green	Initialization or provisioning—Wait for action to complete Factory reset—Wait up to 20 minutes for action to complete
Green	In service, no calls or data sessions—ready to support calls
Slow Green	In service with active calls or data sessions

If you require assistance installing or operating your small cell, contact customer support.

FCC Regulations:

This device complies with part 15 of the FCC Rules. Operation is subject to the following two conditions: (1) This device may not cause harmful interference, and (2) this device must accept any interference received, including interference that may cause undesired operation.

Changes or modifications not expressly approved by the party responsible for compliance could void the user's authority to operate the equipment.

This equipment has been tested and found to comply with the limits for a Class B digital device, pursuant to part 15 of the FCC Rules. These limits are designed to provide reasonable protection against harmful interference in a residential installation. This equipment generates, uses and can radiate radio frequency energy and, if not installed and used in accordance with the instructions, may cause harmful interference to radio communications. However, there is no guarantee that interference will not occur in a particular installation. If this equipment does cause harmful interference to radio or television reception, which can be determined by turning the equipment off and on, the user is encouraged to try to correct the interference by one or more of the following measures:

- Reorient or relocate the receiving antenna.
- Increase the separation between the equipment and receiver.
- Connect the equipment into an outlet on a circuit different from that to which the receiver is connected.
- Consult the dealer or an experienced radio/TV technician for help.

FCC RF Exposure Information

This equipment complies with radio frequency (RF) exposure limits adopted by the Federal Communications Commission for an uncontrolled environment. This equipment should be installed and operated with minimum distance 20 cm between the radiator & your body.
