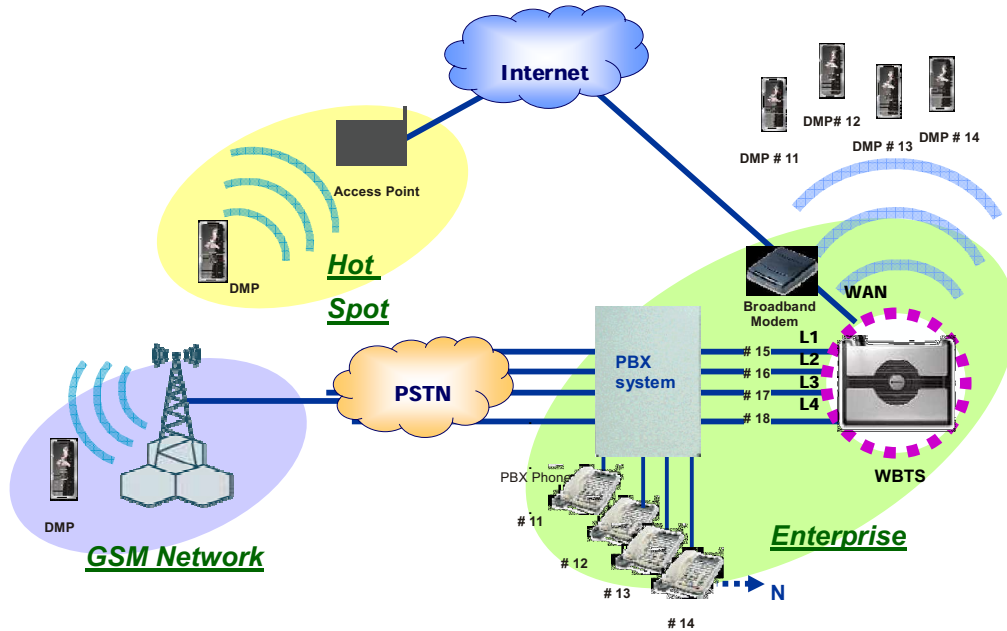


TECOM

Quick Installation Guide for WBTS and DMP Model name:WB0001



Plug WBTS to the SLT ports of exiting PBX

WBTS Hardware Installation

-- WBTS (Wireless Base Transceiver Station)

- **4 POTS Ports (L1 - L4) :**
 - to be plugged into single line ports of any PBX/KTS
- **WAN port :**
 - to be plugged into the Ethernet port of ADSL/Cable modem
- **LAN port (LAN1 - LAN3) :**
 - to be plugged into the Ethernet port of PCs or network devices
- **PWR IN :**
 - to be plugged into the power cord of power adaptor of WBTS

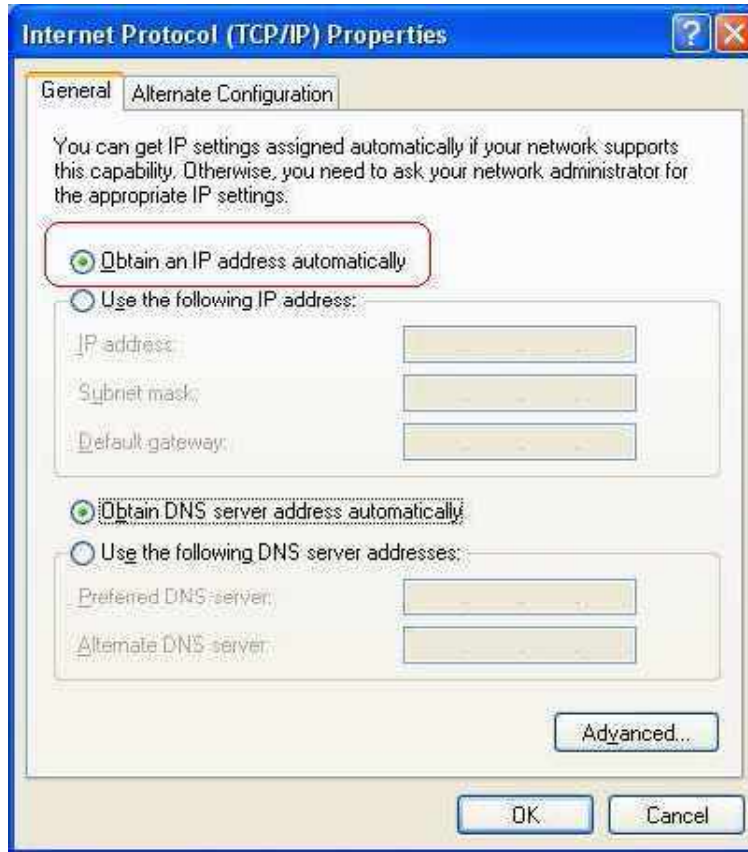
-- DMP (Dual Mode Phone)

- **Just power on the phone, and it will register to WBTS directly because it has been pre-configured. Or please refer to the manual of DMP.**

WBTS configuration

Step 1: To have a PC to connect to WBTS's LAN port with Ethernet cable.

Step 2: Choose "Obtain an IP address automatically" in TCP/IP settings of PC, and then PC will get an IP address from WBTS.



Step 3: Press "Start" → "Run" → "cmd" to open a command screen, and key in "ipconfig" to check the current IP address which your PC got.

```
Microsoft Windows XP [ 5.1.2600]
(C) Copyright 1985-2001 Microsoft Corp.

C:\Documents and Settings\admin>ipconfig

Windows IP Configuration

Ethernet adapter 3:

    Media State . . . . . : Media disconnected

Ethernet adapter :

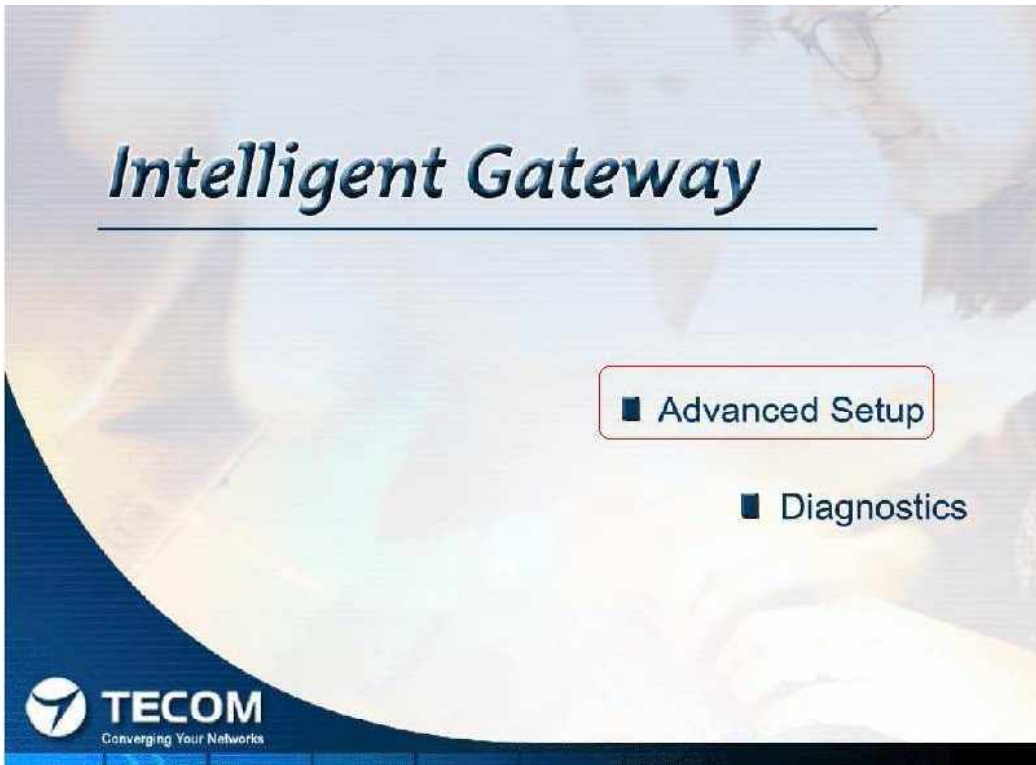
    Connection-specific DNS Suffix . : 
    IP Address . . . . . : 192.168.1.2
    Subnet Mask . . . . . : 255.255.255.0
    Default Gateway . . . . . : 192.168.1.1

C:\Documents and Settings\admin>
```

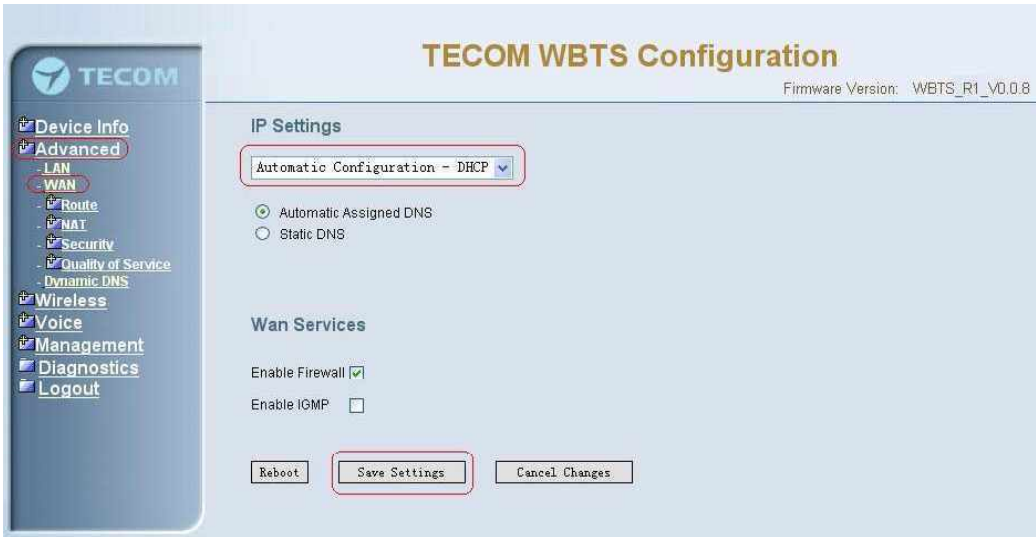
Step 4: Open a browser and key in “192.168.1.1” (Default IP address), and then key in “admin” for User name, “admin” for password.



Step 5: After entering the web configuration pages of WBTS, please choose “Advanced Setup”, and follow the items below to finish the configuration.



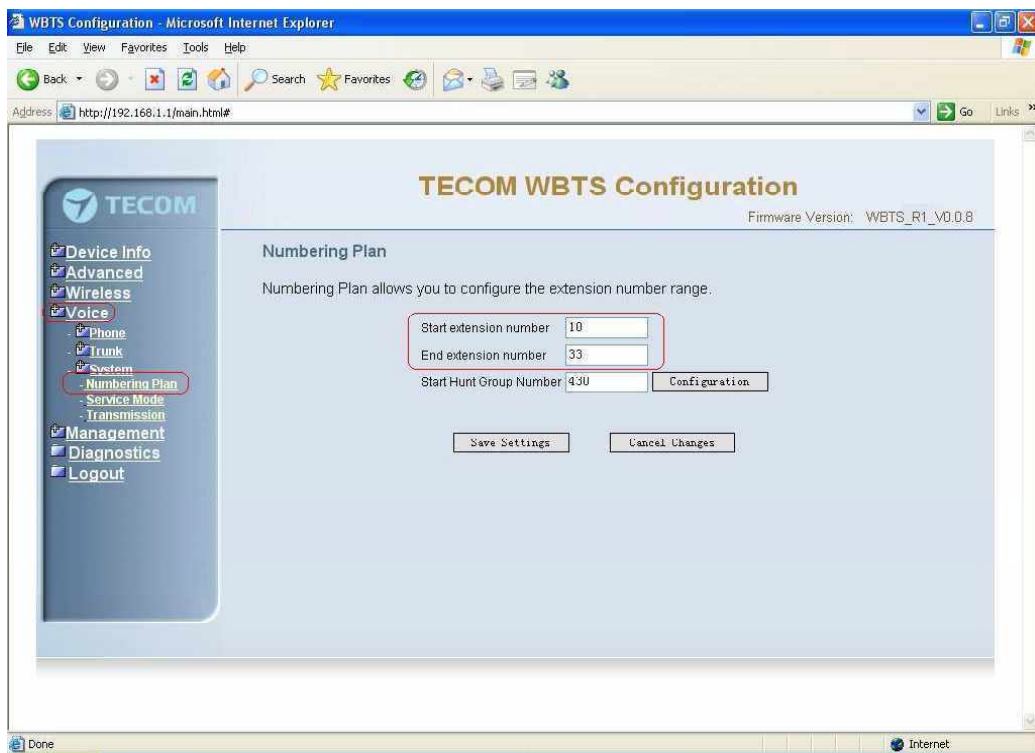
- **WAN port settings** : Choose the correct IP type for your current network.



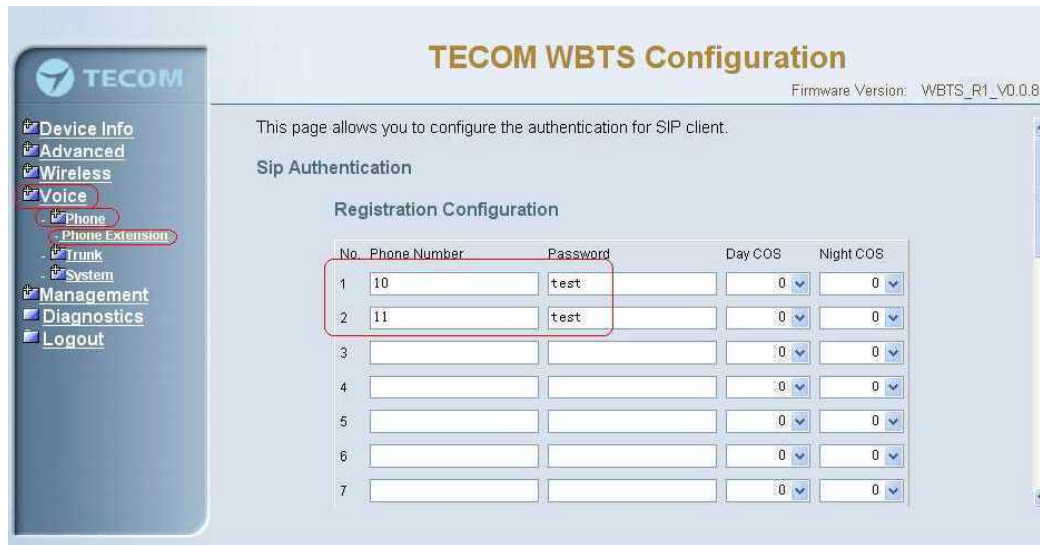
- **Wireless settings** : Set the wireless SSID which you want in this page.



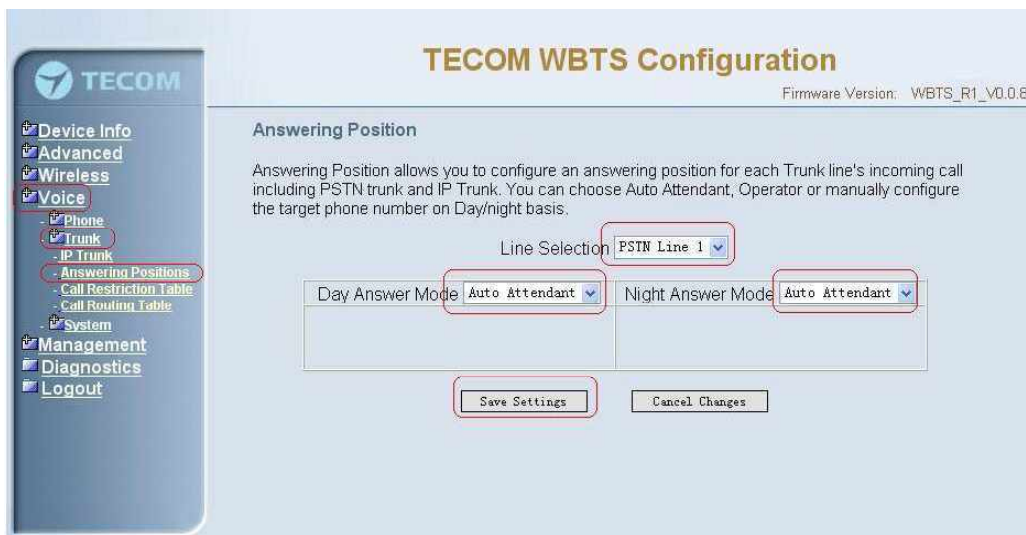
- **VoIP settings** : Set the correct parameters for VoIP part as the following items.
-
- **Numbering Plan settings**: Set the number range which you want for your DMP330 phone.



- **Phone extension settings:** Set the phone extension account in this page which your DMP330 phone registered for.



- **Answering Position settings:** Set receiving mode for every PSTN line port in this page. If you don't want to use the auto attendant, please choose "Extension" and enter the DMP330 extension number in the field.



- **Call Routing Table settings:** Set the call routing rule in this page. Then the number you dial from DMP330 will route to the proper destination directly without any extra number dialed.

TECOM WBTS Configuration

Firmware Version: WBTS_R1_V0.0.8

TECOM

- Device Info
- Advanced
- Wireless
- Voice**
 - Phone
 - Trunk**
 - IP Trunk
 - Answering Positions
 - Call Restriction Table
 - Call Routing Table**
 - System
- Management
- Diagnostics
- Logout

Call Routing Table Configuration

Call Routing allows you to configure the call routing table. Each item will be a routing rule for outgoing call. From/To define the number range, Min/Max define the match length, Del/Insert can change the target number, Destination to define the outbound call interface.

No.	From	To	Min	Max	Del	Insert	Destination
1	0	9	1	99	0		PBX
2			1	99	0		PBX
3			1	99	0		PBX
4			1	99	0		PBX
5			1	99	0		PBX
6			1	99	0		PBX
7			1	99	0		PBX

For example, if the user of PBX needs to dial '9' before getting the dial tone of PSTN, then we can add the rule item 2 as below. Then user can dial the real PSTN number directly without dialing '9' first.

TECOM WBTS Configuration

Firmware Version: WBTS_R1_V0.0.8

TECOM

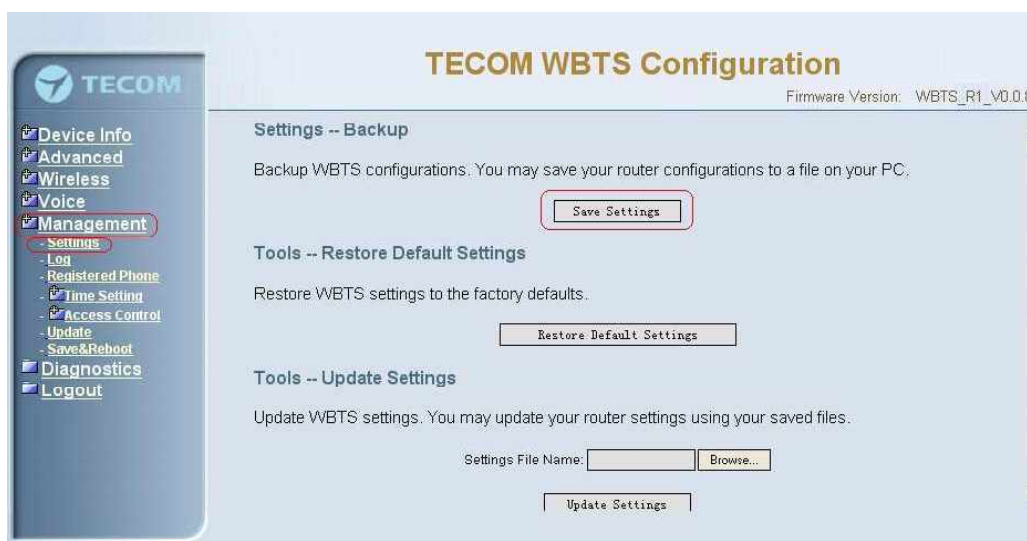
- Device Info
- Advanced
- Wireless
- Voice**
 - Phone Extension
 - Trunk
 - IP Trunk
 - Answering Positions
 - Call Restriction Table
 - Call Routing Table**
 - System
 - Numbering Plan
 - Service Mode
 - Transmission
- Management
- Diagnostics
- Logout

Call Routing Table Configuration

Call Routing allows you to configure the call routing table. Each item will be a routing rule for outgoing call. From/To define the number range, Min/Max define the match length, Del/Insert can change the target number, Destination to define the outbound call interface.

No.	From	To	Min	Max	Del	Insert	Destination
1	0	9	2	2	0		PBX
2	0	9	3	99	0	, 9,	PBX
3			1	99	0		PBX
4			1	99	0		PBX
5			1	99	0		PBX
6			1	99	0		PBX
7			1	99	0		PBX

- **Backup settings** : Press "Save Settings" to keep the current settings in your PC.



DMP configuration

- VoIP Settings:

Press “Menu” → “VoIP” → “SIP Setting” → “Profile Setting” → Choose a Profile → “Edit”

- Common Setting:

→ “Common Setting” → Profile Name (set it as phone number) → Option
→ Done → Done → Press “Yes” to Save.

- Account Setting:

→ “Account Setting”, then key in the following items.

- **SIP Server** : Enter the IP address or domain name of WAN / LAN port of WBTS. (e.g., 192.168.1.1)
- **SIP Port**: 5060 (By default value, no need change.)
- **Display Name**: Enter the display you want. (Suggest to enter the user’s name and phone number.) (e.g., Sam 10)
- **Username**: Enter the user name of phone extension account in WBTS. (e.g., 10)
- **Password**: Enter the password of phone extension account in WBTS. (e.g., test)
- **Auth Name**: Enter the authentication name of phone extension account in WBTS. (e.g., 10)

- After enter the account setting:

→ Press “Done” → Press “Yes” to Save → Press “Back” to back to the previous page → Press “Activate” to activate this profile.

- Wireless Settings:

Press “Menu” → “VoIP” → “Wireless LAN” → “Search for networks” → Choose the SSID which you want to connect to (e.g., WBTS) → “Connect” → Press “Back” many times to back to the main page of DMP330.

Now if the VoIP and Wireless setting are correct, you will see a VOIP icon on the upper-left corner.

- How to keep the wireless setting and auto logon to WBTS when power on DMP330 every time?

→ Press “Menu” → “VoIP” → “Wireless LAN” → “Search for networks” → Move the bar on the SSID which you want to connect to (e.g., WBTS) → Press “Option” → Choose “Define access point”, then finish the following items.

- **Connection name:** keep the original value.
- **SSID:** keep the original value.
- **Network Type:** keep the original value. (Infrastructure)
- **Security Mode:** You can change it or keep the original value. It depends.
- **Encryption Mode:** You can change it or keep the original value. It depends.
- **WLAN Security Setting:** If you enable the security of wireless, please enter the security key here. Or just ignore it.
- **TCP/IP Settings:** keep the original value.
- **SIP Setting:** Choose the profile which you used to connect to WBTS. (e.g., 10)

→ Press “Done” → Press “Yes” to save the changes → Press “Back” to back to the page of Wireless LAN → Choose “Access Point Settings” → Choose the SSID which you want to use for auto logon → Choose “Connect”

Now you will see a VOIP icon on the upper-left corner.

Federal Communication Commission Interference Statement

This equipment has been tested and found to comply with the limits for a Class B digital device, pursuant to Part 15 of the FCC Rules. These limits are designed to provide reasonable protection against harmful interference in a residential installation. This equipment generates, uses and can radiate radio frequency energy and, if not installed and used in accordance with the instructions, may cause harmful interference to radio communications. However, there is no guarantee that interference will not occur in a particular installation. If this equipment does cause harmful interference to radio or television reception, which can be determined by turning the equipment off and on, the user is encouraged to try to correct the interference by one of the following measures:

- Reorient or relocate the receiving antenna.
- Increase the separation between the equipment and receiver.
- Connect the equipment into an outlet on a circuit different from that to which the receiver is connected.
- Consult the dealer or an experienced radio/TV technician for help.

This device complies with Part 15 of the FCC Rules. Operation is subject to the following two conditions: (1) This device may not cause harmful interference, and (2) this device must accept any interference received, including interference that may cause undesired operation.

FCC Caution: Any changes or modifications not expressly approved by the party responsible for compliance could void the user's authority to operate this equipment.

IEEE 802.11b or 802.11g operation of this product in the U.S.A. is firmware-limited to channels 1 through 11.

IMPORTANT NOTE:

FCC Radiation Exposure Statement:

This equipment complies with FCC radiation exposure limits set forth for an uncontrolled environment. This equipment should be installed and operated with minimum distance 20cm between the radiator & your body.

This transmitter must not be co-located or operating in conjunction with any other antenna or transmitter.

The availability of some specific channels and/or operational frequency bands are country dependent and are firmware programmed at the factory to match the intended destination. The firmware setting is not accessible by the end user.