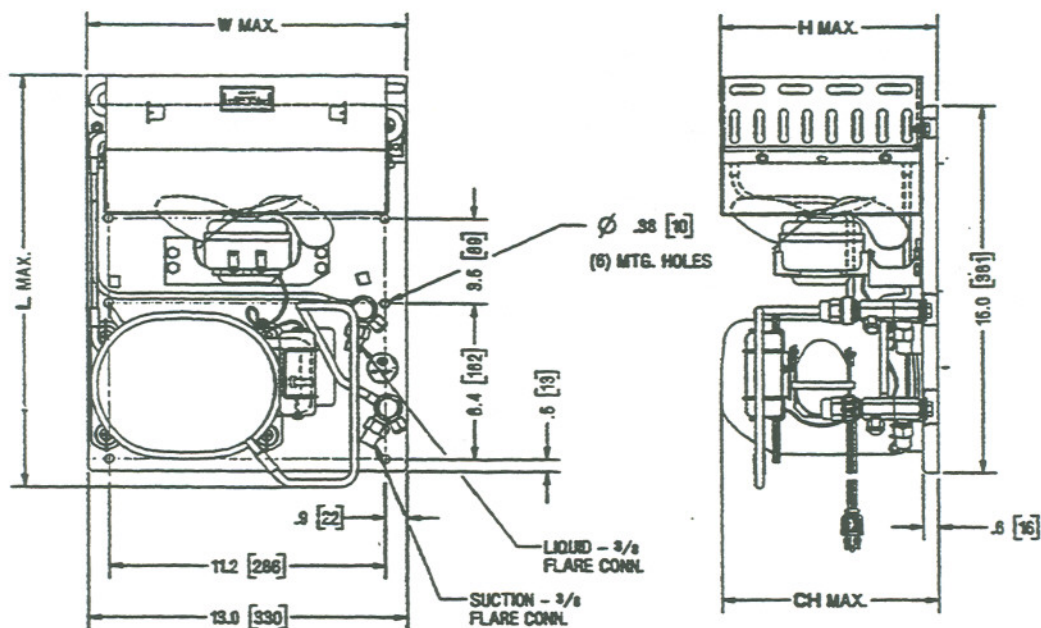




TECUMSEH HERMETIC CONDENSING UNITS

Date: 9-5-95

MODEL AEA2413ZXAXA (Formerly AE2413ZA) R-404A 1/8 HP AIR COOLED

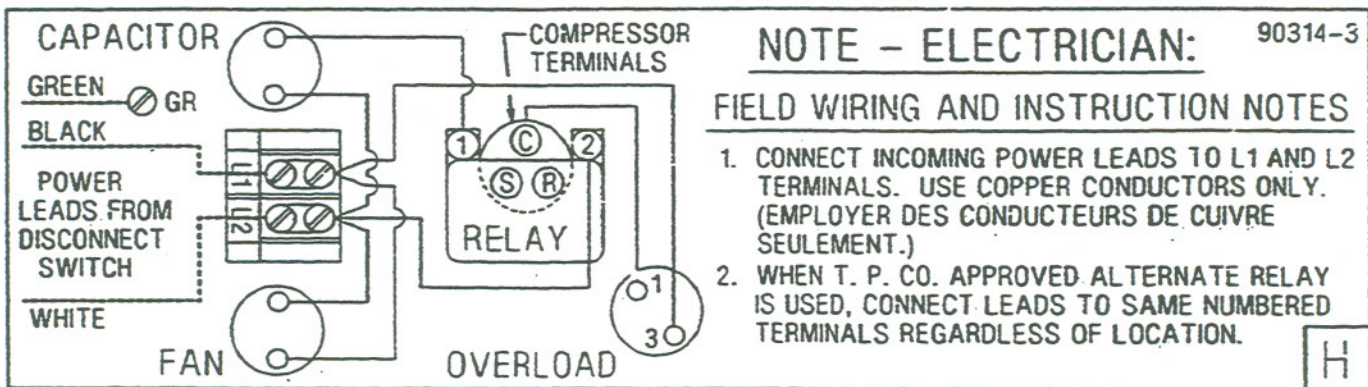


NOTE
DIMENSIONING = INCHES [MILLIMETERS]

Model	Dimensions				*Line Connection		Pumpdown 90° F 90% Full	Air CFM	Oil Chg oz.	Gr. Wt. Lbs.
	L	W	H	CH	Suct.	Liq.				
AEA2413ZXAXA	16.9	13.0	8.9	9.0	3/8 F	3/8F	—	210	16	51
*F=Flare, S=Solder, RF or RS= Rotolock Valve with Flare or Solder Connections Factory charge: 20 psig nitrogen - MUST BE EVACUATED 60 HZ Performance										
Approved Evap. Range		Ambient								
		90° F			100° F			110° F		
°F	PSIG	BTUH	Watts	Head	BTUH	Watts	Head	BTUH	Watts	Head
-30	9.9	850	350	240	740	355	272	630	355	308
-25	12.9	960	375	248	840	380	280	720	380	317
-20	16.3	1080	400	257	950	405	288	820	410	325
-15	19.9	1210	425	266	1060	430	298	930	435	335
-10	23.9	1340	450	275	1170	455	308	1020	460	345
-5	28.2	1470	475	285	1290	485	318	1120	490	355
0	32.8	1610	505	296	1410	510	330	1220	520	367
5	37.9	1740	530	309	1530	540	343	1320	550	380
10	43.3	1870	560	323	1650	570	358	1420	580	395

Based on 40° F return gas, 5° F subcooling

SPECIFICATIONS	AEA2413ZXAXA.
Nominal Voltage -----	115-60-1
Unit B/M -----	2D332-1
Voltage Range -----	126.5 to 103.5
Min. Circuit Ampacity --	7.8
Max. Fuse Size (Amps) --	15
Compressor Model -----	AEA2411ZX
Bill of Material --	AE820AT-900-P2
RLA/LRA -----	5.9/40.0
Overload -----	8300MRTE59
Relay -----	820RR12B79
Cap. Start -----	85PS165A47
Rating -----	270-324/165
Fan Motor -----	810M006B45 or 810G006A94
Fan Blade -----	51531-2
Fan Guard -----	70837-2
Condenser -----	50821
Condenser Shroud -----	70854
Receiver Tank -----	51080
Receiver Tank Rotolock Valve	31584
Unit Drawing -----	SU1896-107
Schematic or Elect. Dwg. ----	90314-3



NOTE - ELECTRICIAN: 90314-3

FIELD WIRING AND INSTRUCTION NOTES

1. CONNECT INCOMING POWER LEADS TO L1 AND L2 TERMINALS. USE COPPER CONDUCTORS ONLY. (EMPLOYER DES CONDUCTEURS DE CUIVRE SEULEMENT.)
2. WHEN T. P. CO. APPROVED ALTERNATE RELAY IS USED, CONNECT LEADS TO SAME NUMBERED TERMINALS REGARDLESS OF LOCATION.

H