



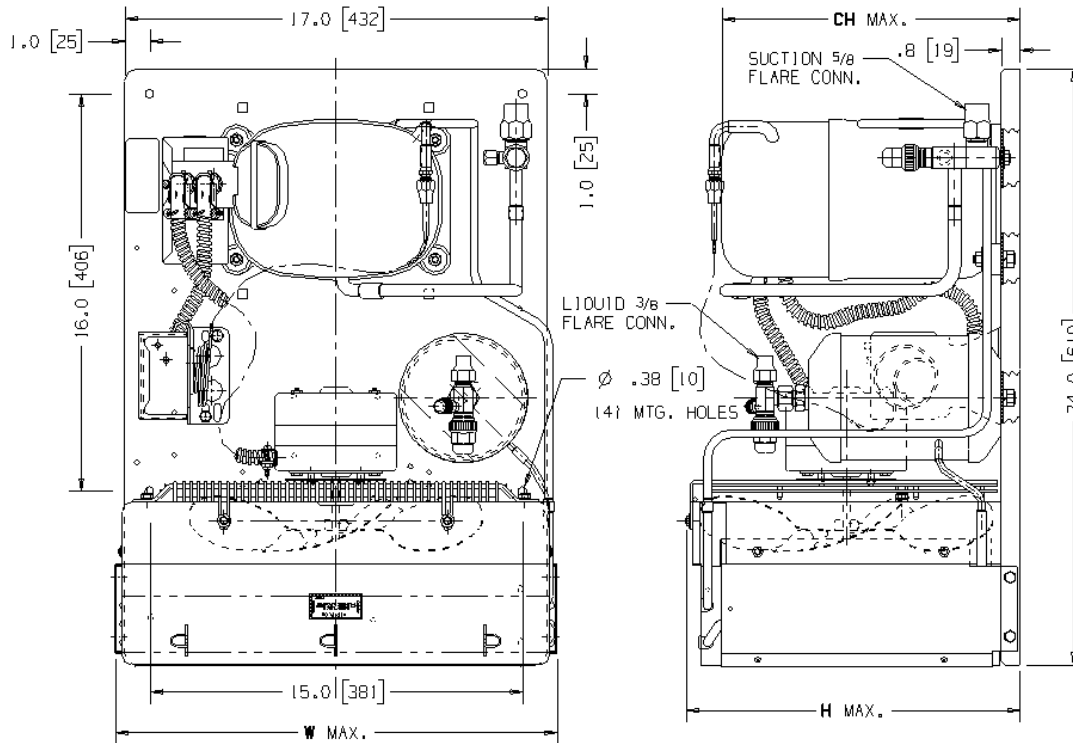
Tecumseh Products Company Hermetic Condensing Units

Model: AJA9486EXDXE

R-22

1 HP

AIR COOLED



NOTE: DIMENSIONING : [INCHES] [MILLIMETERS]

Model	Dimensions, inches				Line Connection*		Pumpdown	Air	Oil Ch	Gr. Wt.
	L	W	H	CH	Suction	Liquid	90 °F 90%	SCFM	Oz	Lbs.
AJA9486EXDXE	24.2	18.0	13.4	12.0	5/8" F	3/8" F	7.0	600	22	101

* F = Flare, S = Solder, RF or RS = Rotolock with Flare or Solder Connections, C = Compression Fitting
Factory charge: 20 PSIG Nitrogen – **MUST BE EVACUATED**

60 Hz Performance

Evap T, °F	PSIG	Ambient Temp											
		90°F			100°F			110°F			120°F		
		BTUH	Watts	Head	BTUH	Watts	Head	BTUH	Watts	Head	BTUH	Watts	Head
-10	16.5	3600	1010	210	-	-	-	-	-	-	-	-	-
-5	20.0	4300	1090	215	3700	1100	230	-	-	-	-	-	-
0	24.0	5100	1170	220	4500	1190	235	-	-	-	-	-	-
5	28.2	5900	1250	225	5200	1270	245	4700	1300	265	4200	1330	285
10	32.8	6800	1330	235	6100	1360	255	5500	1390	275	4900	1420	295
15	37.7	7700	1420	245	6900	1450	260	6300	1480	280	5700	1510	300
20	43.0	8600	1500	250	7800	1530	270	7100	1570	300	6400	1610	330
25	48.8	9500	1580	260	8600	1620	280	7900	1670	310	7200	1720	340
30	54.8	10400	1670	270	9500	1710	295	8800	1760	325	8100	1810	355
35	61.5	11400	1760	280	10500	1810	310	9700	1860	340	8900	1910	370
40	68.5	12400	1850	295	11400	1910	320	10600	1960	355	9800	2010	390
45	76.0	13400	1950	305	12300	2101	335	11500	2070	370	10700	2130	405

Based on 20°F Return Gas, Max. Superheat above 20°F evaporator
40°F max below 20°F evaporator, 5°F Subcooling

Specifications:

Model	AJA9486EXDXE
Nominal Volts-Hz-Ph	208-230/60/1; 200/50/1
Unit Bill of Material	2A1198-1
Voltage Range	187 to 253
Min. Circuit Current	9.7 Amp.
Max. Fuse Size (amps)	15 Amps.
Compressor Model	AJA9484EXD
Comp. Bill of Material	AJ801ET-418-P2
Alt. Comp. Bill of Mat.	-----
Compressor RLA/LRA	6.9 / 54.0
Overload	8300CTRL49
Relay	820ARR3C71
Start Capacitor	855S250B87
Start Capacitor Rating	216-259 µf / 250 V
Run Capacitor	85PR370F20
Run Capacitor Rating	25 µf / 370 V
Fan Motor	810S037B01
Fan RLA	1.10 Amps
Fan Blade	51563
Condenser	50802-6

Model	AJA9486EXDXE
Fan Shroud	70736-1
Fan Guard	71062
Accumulator	N/A
Control Panel Assembly	N/A
Capacitor Cab. Assy.	N/A
High Pressure Switch	N/A
Low Pressure Control	84026-5 or 84026-2
Fan Control Switch	N/A
Contactors	N/A
Receiver Tank	51081
Rec. Tank RL Valve	31547-8 (3/8" F)
Suction Base Valve	56575-2 (5/8" F)
O'Ring Gasket	30334
Unit Drawing	SU1893-44
Electrical Drawing	90657-4
Design Pressure	350 PSIG

