

AWA2464ZXTXC

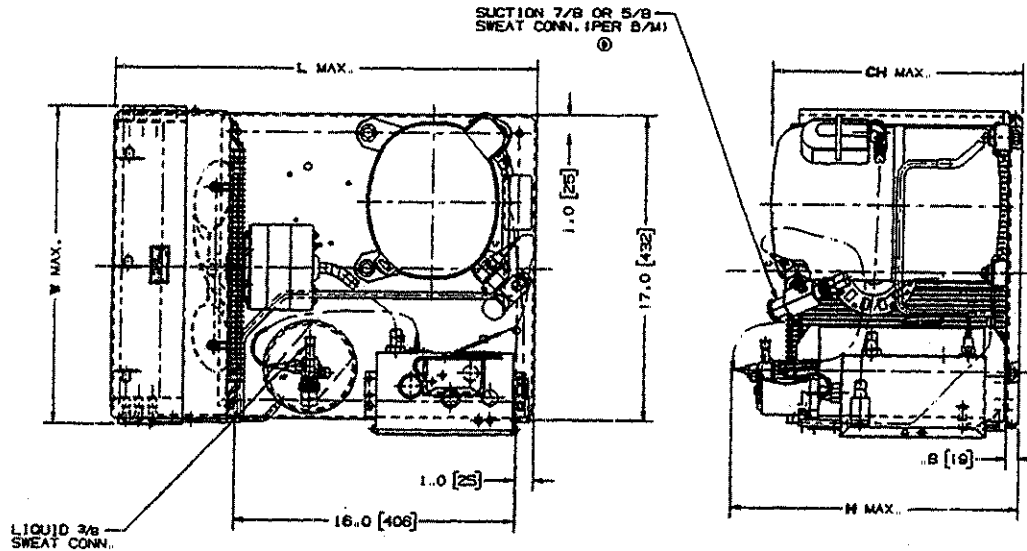
Date: Jan. 10, 1999

Revision 2003



TECUMSEH HERMETIC CONDENSING UNITS

MODEL AWA2464ZXTXC (B/M 2B3225-9) R-404A 1 1/2 HP AIR COOLED



NOTE DIMENSIONS = INCHES (MILLIMETERS)

Model	Dimensions				*Line Connection		Pumpdown 90° F 90% Full	Air CFM	Oil Chg oz.	Gr. Wt. Lbs.
	L	W	H	CH	Suct.	Liq.				
AWA2464ZXTXC	24.0	17.8	16.4	14.3	7/8S	3/8S	6.3#	1600	38	130

POE

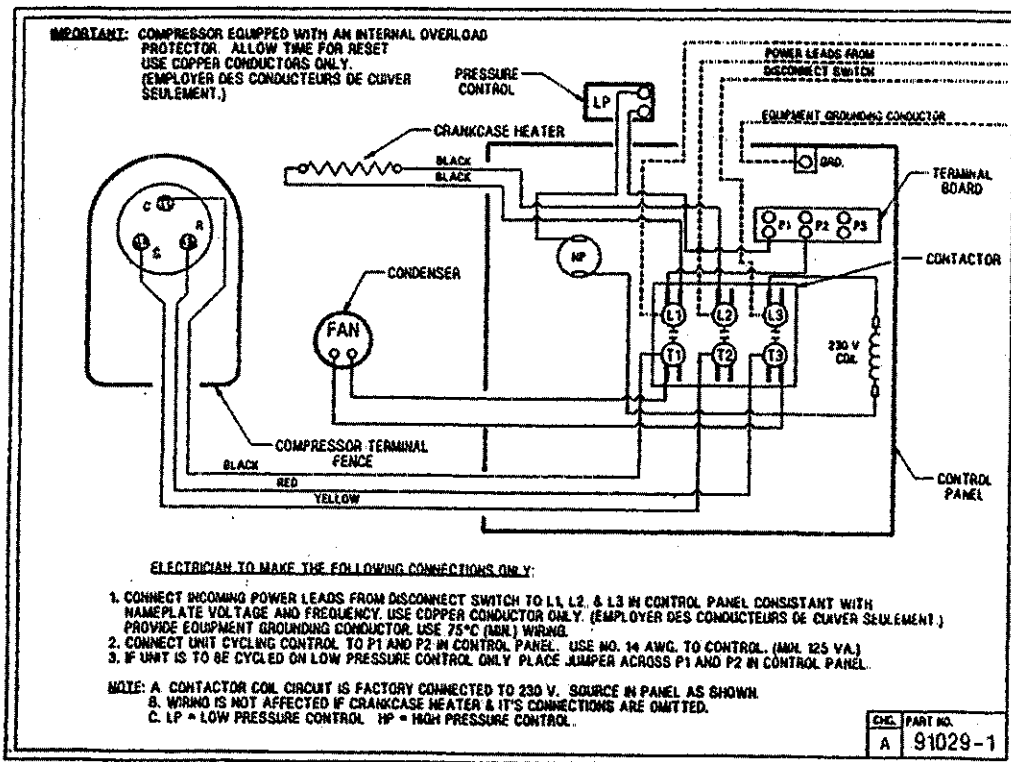
*F=Flare, S=Solder, RF or RS= Rotolock Valve with Flare or Solder Connections
Factory charge: 20 psig nitrogen - **MUST BE EVACUATED** 60 HZ PERFORMANCE

Approved Evap. Range		Ambient								
		90° F			100° F			110° F		
°F	PSIG	BTUH	Watts	Head	BTUH	Watts	Head	BTUH	Watts	Head
-40	4.3	2572	1129	242	1966	1065	274	1245	913	304
-35	6.8	3184	1211	250	2532	1150	282	1795	1026	313
-30	9.6	3810	1307	259	3103	1249	290	2339	1147	323
-25	12.6	4449	1416	269	3680	1361	300	2878	1277	334
-20	16.0	5102	1540	281	4263	1486	311	3413	1415	345
-15	19.6	5769	1676	293	4852	1625	323	3942	1562	358
-10	23.6	6450	1827	307	5446	1778	337	4466	1716	371
-5	27.9	7145	1992	321	6047	1944	352	4985	1880	385
0	32.6	7854	2170	337	6653	2123	368	5499	2051	401
+5	37.7	8576	2362	354	7264	2316	385	6008	2231	417
+10	43.2	9313	2567	372	7882	2522	404	6512	2419	434

Return gas temp 65° F, 5° F subcooling

SPECIFICATIONS	<u>AWA2464ZXTXC</u>
Nominal Voltage	<u>230/200-3</u>
Unit B/M	<u>2B3225-9</u>
Voltage Range	<u>253 to 180</u>
Min. Circuit Ampacity	<u>11.6</u>
Max. Fuse Size (Amps)	<u>20</u>
Compressor Model	<u>AWA2460ZXT</u>
Comp. Bill of Material	<u>AW613RT-121</u>
RLA/LRA	<u>8.4/63.4</u>
ESP Overload	<u>Internal</u>
Control Panel	<u>AC1396-6</u>
High Pressure Switch	<u>84097-3</u>
Control	<u>84026-5 (LP)</u>
Contactors	<u>91014 (30AMP-3PH,230V)</u>
Fan Motor (OEM)	<u>810S037B01</u>

Fan RLA	<u>1.10 RLA</u>
Replacement Motor	<u>TFM372</u>
Fan Motor Bracket	<u>Grd. Mnt.</u>
Fan Blade	<u>51563</u>
Shroud	<u>70736-1</u>
Condenser	<u>K42-4</u>
Fan Guard	<u>71062</u>
Receiver Tank	<u>51081</u>
Receiver Tank Valve	<u>31581-1 (3/8" S) RL</u>
Suction Rotolock	<u>31529-1 (7/8" S) RL</u>
O' Ring Gasket	<u>30334</u>
Optional Outdoor Enclosure	<u>IP-201D</u>
Crankcase Heater (If Inç)	<u>NA</u>
Unit Drawing	<u>SU1918-12</u>
Schematic or Elect. Drawing	<u>91029-1</u>



Some parts listed may be optional or listed as replacement parts.