



March 7, 2011

Tecumseh Compressor Company

Indoor Condensing Units

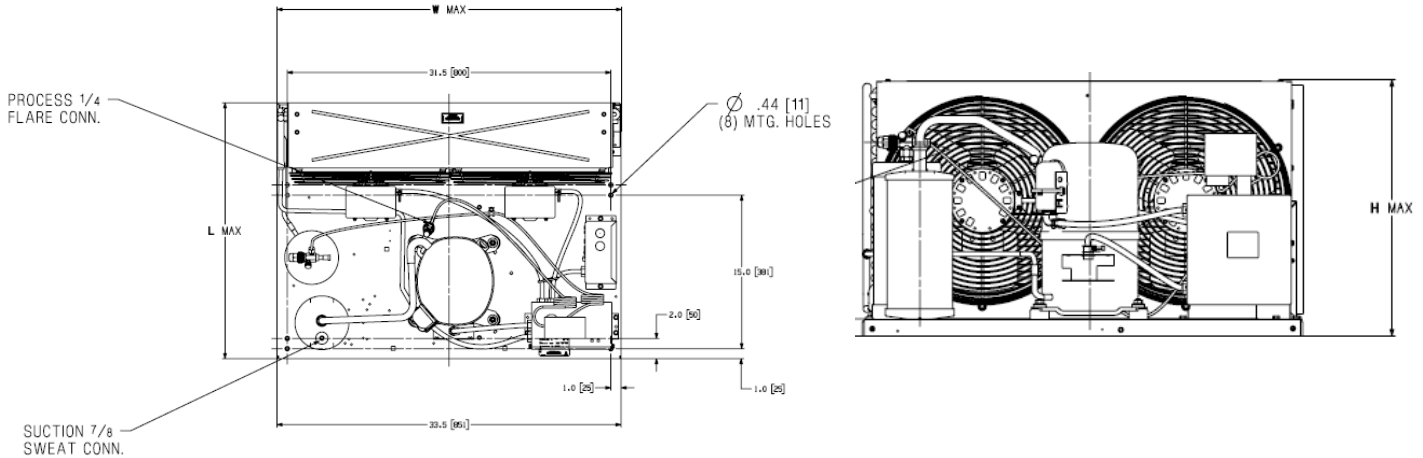
Model: AWG4520CXNXM

BoM: 2B3271-1

R407C

1.5 HP

AIRCOOLED



Model	Dimensions, inches				Line Connection*		Pumpdown	Air	Oil Ch	Gr. Wt.
	L	W	H	CH	Suction	Liquid	90 °F 90%	SCFM	Oz.	Lbs.
AWG4520CXNXM	25.0	33.48	19.5	--	7/8" S	3/8" S	14.73 lbs	1750	38	195

* F = Flare, S = Solder, RF or RS = Rotolock with Flare or Solder Connections, C = Compression Fitting

Evaporator T,		Ambient Temperatures											
		80°F			90°F			100°F			110°F		
°F	PSIG	BTUH	Watts	Cond T	BTUH	Watts	Cond T	BTUH	Watts	Cond T	BTUH	Watts	Cond T
5	23.5	7327	1227	86	6402	1266	97	6000	1289	108	1628	1289.2	118
10	27.9	8574	1327	87	7503	1360	98	6667	1379	108	3231	1388	118
15	32.7	9998	1425	88	8781	1454	98	7567	1473	109	4873	1480	119
20	37.9	11597	1521	89	10237	1550	99	8700	1571	109	6554	1578	119
25	43.6	13372	1615	90	11870	1646	100	10066	1672	110	8273	1680	120
30	49.6	15322	1706	91	13681	1743	101	11665	1777	111	10031	1788	121
35	56.1	17448	1795	93	15669	1841	102	13496	1886	112	11828	1900	122
40	63.2	19749	1882	94	17834	1940	104	15561	1999	114	13664	2018	123
45	70.7	22226	1966	96	20177	2039	105	17858	2115	115	15538	2140	125
50	78.8	24879	2048.1	98	22698	2139.3	107	20388	2235	116.99	17451	2267.5	126
55	87.9	27707	2128	100	25396	2240	109	23152	2358	119	19403	2400	128

60 Hz Performance

Return gas temp. 65°F, 5°F sub cooling

