



March 16, 2011

# Tecumseh Compressor Company

## Indoor Condensing Units

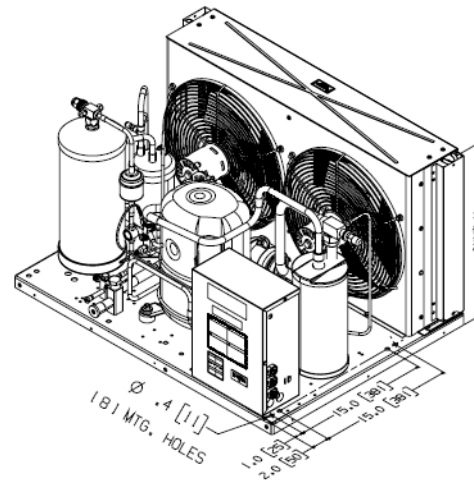
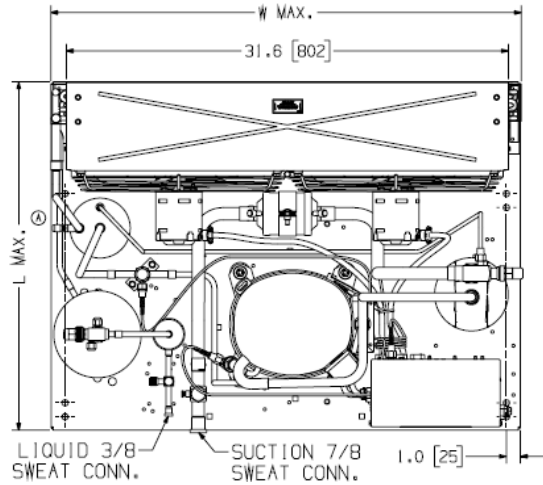
Model: AWG4520EXNXF

BoM: 2B3268-1

R-22

1 3/4 HP

AIRCOOLED



Model	Dimensions, inches				Line Connection*		Pumpdown	Air	Oil Ch	Gr. Wt.
	L	W	H	CH	Suction	Liquid	90 °F 90%	SCFM	Oz.	Lbs.
<b>AWG4520EXNXF</b>	25.0	33.5	19.5	14.7	7/8" S	3/8" S	19 lbs	1800	38.5	190

\* F = Flare, S = Solder, RF or RS = Rotolock with Flare or Solder Connections, C = Compression Fitting

Evaporator T		Ambient Temperatures											
		80°F			90°F			100°F			110°F		
°F	PSIG	BTUH	Watts	Cond T	BTUH	Watts	Cond T	BTUH	Watts	Cond T	BTUH	Watts	Cond T
10	32.8	9781	1469	95	8861	1496	104	7942	1523	112	7027	1548	121
15	37.7	11250	1542	97	10236	1576	106	13797	1612	114	8169	1642	123
20	43.0	12752	1617	99	11687	1658	108	10576	1699	116	9412	1739	125
25	48.8	14452	1687	102	13183	1743	110	11968	1793	118	10822	1837	127
30	54.8	16195	1761	104	14890	1824	112	13584	1885	121	12281	1940	129
35	61.5	18042	1836	107	16635	1911	115	15225	1983	123	13828	2048	131
40	68.5	19913	1917	109	18388	2006	117	16959	2085	125	15446	2162	133
45	76.0	21934	1998	112	20296	2101	120	18663	2199	128	17165	2282	135
50	84.0	24131	2076	115	22288	2201	122	20553	2312	130	18824	2416	138
55	92.6	26296	2167	117	24482	2298	125	22670	2423	132	20817	2542	140

### 60 Hz Performance

Return gas temp. 65°F, 5°F sub cooling

**Specifications/ Parts:**

<b>Model</b>	<b>AWG4520EXNXF</b>
Unit Bill of Material	2B3268-1
Nominal Volts-Hz-Ph	208-230-60-1
Refrigeration Range	20° to 55°
Design Pressure Low	150
Design Pressure High	450
Voltage Range	187 to 254
Min. Circuit Ampacity	13.5
Max. Fuse Size (amps)	20
Compressor Model	AWG5520EXN
Comp. Bill of Material	AW703ET-099-P2
Compressor RLA/LRA	9.5 / 52.0
Overload	INTERNAL
Relay	820ARR3H23
Run Capacitor	85PR370F20
Run Capacitor Rating	25MFD 370V(M)VDE
Start Capacitor	85PS330D17
Start Capacitor Rating	145-175 MFD 330V VDE
Contactors	91014
Unit Drawing	DGU1918-58
Wiring Diagram	91263-02

Fan Motor	810F050C20 (2)
Fan Motor RLA	0.7 Each
Fan Blade	51568-1 (2)
Fan Guard	70831 (2)
Fan Shroud	70648-2
High Pressure Switch	84095-1
Low Pressure Control	84026-2
Oil Separator *	704-00002
Condenser	50855-1
Fan Switch	84096-1
Fan Switch	84096-2
Receiver Tank	51082-1
Liquid Valve	31592
Liquid Filter *	70081
Sight Glass *	70084
Suction Valve *	31529-1
Rotolock Valve Gasket	30233
Discharge Valve	56596
Suction Filter *	70082
Accumulator *	TK00042000
Crankcase Heater	91022-1
Defrost Timer *	N/A
Suction Shut Off Valve*	56500-K14
Liquid Shut Off Valve*	56500-K06
Shrader Valve Body*	56510
Valve Core*	56552
* = Equipped Units Only	

**Electrical Diagram**

