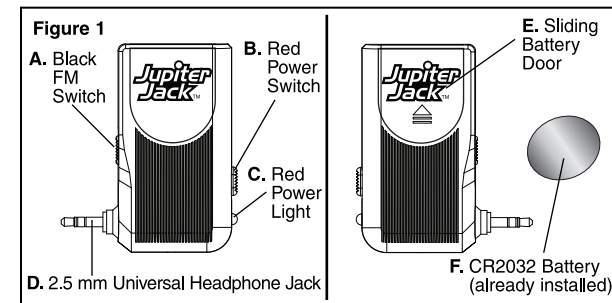


**Jupiter Jack Features:**

- A.** Black FM Switch    **D.** 2.5 mm Headphone Jack
- B.** Red Power Switch    **E.** Sliding Battery Door
- C.** Red Power Light    **F.** CR2032 Battery

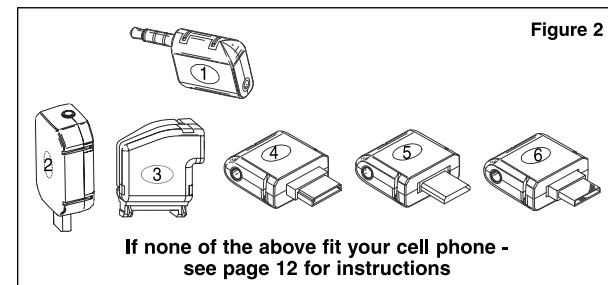


**A front and back view of the Jupiter Jack with features indicated.**

**Congratulations on purchasing the Jupiter Jack!** It's the new revolutionary hands free device for your cell phone that turns your car radio into a hands free phone! Use the following simple instructions, so you can easily talk and drive at the same time.

**Finding the Right Adapter:**

1. The Jupiter Jack has a 2.5mm universal headphone jack (Fig. 1, D), which fits most cell phones. However, some cell phones require an adapter to fit the Jupiter Jack. Your package comes with six adapters (Fig. 2).



**Image of adapters to attach Jupiter Jack to the cell phone.**

2. See if Jupiter Jack will plug into you cell phone **without using an adapter.**
3. If Jupiter Jack does not fit, find the adapter from the six optional adapters provided (Fig.2) that fits into your cell phone's headphone port.

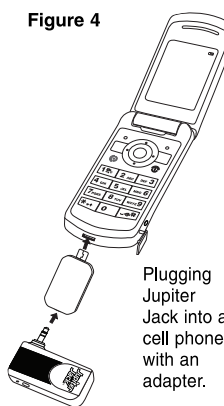
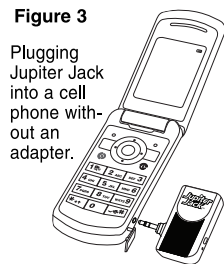
4. If none of the adapters fit - see page 12 of this instruction manual.

**Getting Started:**

Perform while your car is parked in a safe parking area.

1. Turn your cell phone on.
2. Plug the Jupiter Jack into your cell phone's headphone jack. Be sure to select the proper adapter if needed.
3. Turn on the Jupiter Jack by sliding the red power switch (Fig.1, B), so the red power light illuminates (Fig.1, C).
4. Tune your car radio to 99.3 FM.

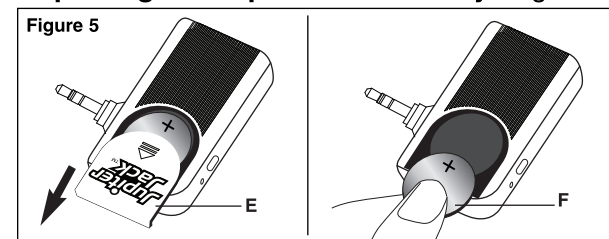
For your convenience you should set this station as one of your presets for future use.



**Note:** You should not hear any station playing through the radio once the Jupiter Jack is powered on. If you still hear a station playing, try sliding the black FM switch (Fig. 1, A) on the Jupiter Jack from channel 99.3 to the other frequency, 101.3, and correspondingly change the radio station to 101.3 FM.

5. Now test Jupiter Jack by making a phone call. This will allow you to make necessary adjustments and learn how to use the product.
6. Through your car's speakers, you should clearly hear the other phone ringing. Adjust the radio volume if necessary.
7. Adjust your cell phone volume if other party does not hear you clearly.
8. When you are finished with a call simply hang up as you normally would.
9. **To conserve battery life,** remember to turn off the Jupiter Jack when not in use by sliding the red switch (Fig.1, B) so that the red light (Fig.1, C) is no longer illuminated. You may now also turn off your radio, or change it to a different station when not using the Jupiter Jack.

**Replacing the Jupiter Jack Battery: Fig. 5**



1. On the back of the Jupiter Jack unit there is a sliding battery door (E) that opens allowing the CR2032 battery to be replaced as often as needed.
2. Turn Jupiter Jack over and tap lightly on your palm until battery comes out. Replace with a fresh CR2032 battery making sure that the plus sign is facing up (F). Replace battery door .  
For your convenience, you can order free replacement batteries for a nominal processing charge by using the Battery Redemption certificate that came with your product or go to [www.JupiterJackHelp.com](http://www.JupiterJackHelp.com)

**Note:** Remember to always turn Jupiter Jack off when not in use to conserve battery life.

**FREQUENTLY ASKED QUESTIONS AND ANSWERS**

**Q. If 99.3 FM is an active radio station in the town/location where I am driving, will there be interference to my Jupiter Jack?**

A. The Jupiter Jack was designed to transmit to any radio within approximately 5 feet of the radio. Turning the Jupiter Jack on should eliminate the noise caused by the radio station. If intermittent interference should persist - slide the black FM switch and tune radio to 101.3 FM.

**Q. Where do I keep my cell phone while using the Jupiter Jack?**

A. We recommend keeping your cell phone in your car's cup holder or you may purchase the optional dash board mount by going to [www.JupiterJackHelp.com](http://www.JupiterJackHelp.com) or using the Dashboard Mount certificate that came with your product.

**Q. What if the phone call is heard but with static or interference?**

- A. 1. Make sure that the Jupiter Jack and/or adapter is securely attached to your cell phone.
2. Find the optimal position for your cell phone in the car by moving it around during a phone call. For example, you may get better reception by placing

the phone closer to your car radio or on the center console between the car seats. Please have your car safely parked while doing this.

**Q. What if the person you are speaking to hears an echo?**

A. Turn down the volume on your cell phone and/or move your cell phone away from your car's radio speakers.

**Q. What if the phone call cannot be heard?**

A. 1. Turn up the volume on your cell phone and/or turn up the volume on your car's radio.  
2. Check your phone settings while connected to the Jupiter Jack to check if your phone needs to connect or activate headset. If so, select this setting.

**Q. What if the caller's voice sounds too loud or distorted?**

A. Lower the volume on your cell phone and if needed, turn up the volume on your car's radio. This has proven to reduce distortion in caller's voices.

**Q. What if the incoming call cannot be heard?**

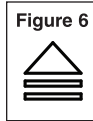
A. Turn up the volume on your car radio.

**Q. What if Jupiter Jack performance begins to deteriorate?**

A. Try using a fresh battery.

**Q. How do I replace the battery?**

A. On the back of the Jupiter Jack unit there is a sliding battery door indicated by an arrow (Fig. 6). Open door and replace battery with a CR2032 Lithium battery. For your convenience we have additional Lithium replacement batteries available for a nominal \$2.99 charge.



**Q. Can the Jupiter Jack's battery be recharged?**

A. No, this type of CR2032 Lithium battery cannot be recharged, however, it is commonly available.

For your convenience, you can order free replacement batteries for a nominal \$2.99 processing charge by using the Battery Redemption Certificate that came with your product or go to [www.JupiterJackHelp.com](http://www.JupiterJackHelp.com).

**Q. How do I know if the battery is dead or running low?**

A. The red LED light on the Jupiter Jack is intended to also indicate the battery's power level. If the light is dim, or does not come on, chances are that the battery does need replacing. Also, if the audio levels seem low or the transmitter doesn't seem to be strong enough to supersede other radio interference, you may need to replace the battery.

**Q. When I shut off my car or my car radio my cell phone stops working:**

A. Remove the Jupiter Jack from your cell phone to resume normal function.

**Q. Will the Jupiter Jack work in the house?**

A. Yes, the Jupiter Jack will work anywhere a FM radio can be tuned to 99.3 FM. Use the Jupiter Jack for conference calls in offices, or on a kitchen radio to talk with your hands-free while cooking!

**Q. Can the Jupiter Jack be used on an iPod or other MP3 player device?**

A. Yes. With the included adapter that converts Jupiter Jack to a 3.5mm stereo, you can use the Jupiter Jack to transmit an MP3 player or iPod to the radio by tuning to 99.3 FM.

**Q. With both Jupiter Jack and cell phone attached & on, the radio properly tuned - I make a call & hear nothing?**

A. With certain Blackberry models the menu feature must be used to **activate the headset**.

**⚠ WARNINGS**

- Do not attempt to install or adjust the Jupiter Jack while driving.
- Using your car radio to make phone calls may drain your battery if your engine is off.

This device complies with Part 15 of the FCC Rules. Operation is subject to the following two conditions: (1) this device may not cause harmful interference, and (2) this device must accept any interference received, including interference that may cause undesired operation.

**NOTE:**

THE MANUFACTURER IS NOT RESPONSIBLE FOR ANY RADIO OR TV INTERFERENCE CAUSED BY UNAUTHORIZED MODIFICATIONS TO THIS EQUIPMENT. SUCH MODIFICATIONS COULD VOID THE USER AUTHORITY TO OPERATE THE EQUIPMENT.

[www.TeleBrands.com](http://www.TeleBrands.com)  
Made in China. ©2009 TeleBrands.

Distributed by:



Fairfield, NJ 07004

TBJJIMR0

**If The Included Adapters DO NOT FIT Your Cell Phone**

**First:** You need to determine your cell phone's:  
a. **Make** (i.e. Nokia, Samsung, LG, Motorola, etc.) and  
b. **Model number** – typically a combination of digits &/or letters.  
You can determine your phone's make & model number as follows:  
a. Check your cell phone's owner manual.  
b. Check your cell phone's web site.  
c. Check inside your cell phone's battery compartment by removing the battery.  
d. Call your carrier's (i.e. ATT, Verizon, Sprint etc.) customer service number.  
e. Go to [www.JupiterJackHelp.com](http://www.JupiterJackHelp.com) and see the link for adapters.

**Second:** After you have determined your cell phone's make and model number, use any of the following **3 Easy Ways To Order** your Free adapter just pay \$2.99 p&h.

**1. VISIT** our website at: [www.JupiterJackHelp.com](http://www.JupiterJackHelp.com)

**2. CALL** 24 hours/7 days toll free: 1-800-945-0322

**3. Or By MAIL:**

Mail your cell phone's make & model number. Include your name, address, & phone number along with check/money order for \$2.99 ea. p&h to: Jupiter Jack Adapter, Dept # JJA1000, One Telebrands Plaza, Fairfield, NJ 07004



**For Instructional Video visit**  
**[www.JupiterJackHelp.com](http://www.JupiterJackHelp.com)**