

**FCC ID: U46-G10**

**MODEL: G10**

**USER MANNUAL**

## 1. SAFETY AND CAUTIONS

- Switch off the phone in the vicinity of chemical plants, gas stations and other locations containing explosive objects.
- Keep the phone away from children.
- Please switch off your phone as instructed where notices are present.
- Switch off the phone before boarding on plane and don't switch on the phone during flight.
- Please strictly conform to your local legal regulations during a drive. When hands free function is available, please use the hands free calling device to ensure safety. Please park the car at the roadside for communication only if in emergency.
- Take special care when using the mobile phone in the vicinity of such devices as pacemakers, hearing aids and electro-medical equipments, which may be interfered by the mobile phone. When the phone is switched on, a minimum distance of 6 inches (15cm) shall be kept between the phone and pacemaker. When using other medical equipments, please consult the vendors of these equipments or doctors for relevant information.
- No guarantee for the accessories and fitments not produced by the original factory.
- Never attempt to disassemble the phone by unauthorized persons. Contact the authorized service center in your region in case of any trouble with your mobile phone.
- Recharging the phone without battery being installed is prohibited.
- Charge the phone in well-ventilated environment, and keep it away from inflammable and high explosive objects.
- To avoid demagnetization, keep the handset away from magnetic substances such as magnetic discs or credit cards.
- Ensure to keep the handset away from liquid. Take the battery off and contact the authorized service center if the handset gets soaked or erosion can happen.
- Avoid using the phone in too high or too low temperature environments. Never expose the phone directly under sunlight or in high humidity or dusty environment.
- Do not use liquids or damp cloth with strong detergents to clean the handset.
- Avoid dropping, crashing or excessively squeezing the phone, or it may be subject to damages of different degrees.
- The original factory will not take any responsibility in the case of noncompliance with the above advices or improper use of the phone.
- Please send used li-ion batteries to specified locations or return them to our company. Do not dispose the batteries into dustbins.

## *CONTENT*

<b>1. SAFETY AND CAUTIONS .....</b>	<b>2</b>
<b>2. PHONE LAYOUT .....</b>	<b>8</b>
<b>3. SPECIFICATIONS LIST .....</b>	<b>10</b>
<b>4. ESSENTIAL TOPICS .....</b>	<b>12</b>
<b>5. GETTING STARTED .....</b>	<b>15</b>
<b>6. BASIC OPERATIONS .....</b>	<b>18</b>
<b>7. USING THE MENU .....</b>	<b>22</b>
ENTER THE MENU .....	22
MENU .....	23
OPTION LIST .....	23
SMS .....	23
Contact	
29	
CALL HISTORY .....	31
PROFILES	
33	
FILE MANAGER .....	34
MULTIMEDIA .....	35
SETTINGS .....	35
TOOL .....	43
EXTRA .....	47
<b>8. OPERATIONS OF INPUT METHODS .....</b>	<b>50</b>
<b>APPENDIX I COMMON FAULT DIAGNOSES .....</b>	<b>50</b>
<b>APPENDIX II ABBREVIATIONS AND EXPLANATIONS .....</b>	<b>50</b>

## 2. Phone layout

Appearance



### 3. Specifications list

Phone Type	G10
Specification	
Dimensions	107×46×13.6mm
Weight	75g
Screen display resolution	2.0" QCIF 176*220 pixel
Card type	SIM
Applicable system	GSM+WCDMA
Contact capacity	1000 sets in the phone
SMS capacity	100 pieces for inbox and 200 pieces for outbox in mobile phone(Not including the SIM card)
Preset short message	12 preset short messages
Call records	20 each for missed, answered and dialed calls
Receiving call vibration	Support
Preset ringing tone type	10 ringing tones
Preset SMS tone type	10 tones
Language	English/Spanish
Call time	Support
Date and time display	Support
Alarm/Calculator	Support
MP3	Support
MP4	Support
Double Camera	Support
Bluetooth	Support
FM Radio	Support
MMS	Support
Video Recorder	Support
Sound Recorder	Support
Opera Mini	Support
Receiving/Sending short message	Support
Input methods	Support
Speed dial	Support
Games	Support
Caller number display*	Support
Divert Calls*	Support
Call Waiting*	Support

**Note:** Functions or services marked with "\*" require network or SIM card support.

## 4. Essential Topics

### **Communication control keys**

The 'Call control' key is used for making a call (after a number has been entered); or for viewing recent call records.

The 'on/off' key is used for ending a call (during dialing and communication state), or for exiting menu under menu state to return to standby menu. Pressing and holding this key may switch on or off the phone.

### **Functional keys and soft keys**

Direction keys of up, down, left and right direction are used for browsing menus, lists, options or content compiled.

Under standby state, the up-direction key is used as shortcut key for organizer; the down-direction key is used as shortcut key for contacts; the left-direction key is used as shortcut key for messages; the right-direction key is used as shortcut key for settings. Under standby state, the left soft key is a shortcut key for accessing main menu and the right soft key is a shortcut key for Contact. The functions of the two soft keys under other states are closely related to the phone's current state.

Under standby state, you can press and hold the key '#' to switch between ringing tone and silence; press and hold the key '\*' to lock keypad.

### **Standard keypad**

Keys from '0' to '9', and key '\*' and '#' are used for dialing, inputting password, English letters, symbols etc.

**Note:** After the phone's standby interface maintains for period of time (time length is set by the user), the phone will turn off the backlight of the screen for the purpose of power saving. If the backlight of the screen goes out, you can press any key on the phone's keypad to turn on the backlight immediately.

### **Display icons**

Under standby state, common icons on the first row of the screen are as follows:



Signal strength received by the antenna



Alarm clock



There is (are) unread message(s).



Battery level indicator (This icon indicates full battery).



Roaming



Vibrate icon



Ring icon



Vibrate first then ring



Mute Icon



Keypad locked

### **Language and input methods**

Languages supported by this phone are listed under the path [Settings]->[Display Setup] ->[Language].

This handset provides input methods as Numbers and accustomed symbols input. Under editing status, you can press the key '#' to switch between input methods and press the key '\*' to switch to symbol input method. For detailed operations please refer to relevant chapters of "Operation of Input Methods".

### **Short message alert modes**

Four modes of 'Ring, Vibrate, Vibrate then ring, Off' are available for your selection under the path [Settings]->[phone setup] -> [Profiles], and then choose one alert mode->[Customize]->[Message Alert].

### **Call alert modes**

This handset has four alert modes of Ring, Vibrate, Vibrate First Then Ring, off for your selection under the path [Settings]->[phone setup] -> [Profiles], and then choose one alert mode->[Customize]->[call alert].

### **Find contacts**

This handset provides a way to search for phone number by first letter of a name. Under the contact name list (press the right soft key

under standby state or press the key under main menu to get in), after inputting the first letter of a name to be searched for correctly, the screen will display all the fit records.

### **Interrelated descriptions**

(International long-distance call)

Dial 00 or press and hold 'o' until '+' displays and then key in district code, area code and the phone number.

(ESN)

Electronic Serial Number: Switch off the phone and take off the battery, you can see the barcode label of this ESN printed at the back of the phone.

## **5. Getting started**

### **What's SIM card?**

When registering your mobile phone number, you will have a SIM card (User Identity Module) provided by the network provider.

With the SIM card, which stores many parameters required for communications, you can use the various functions of the phone and store personal information, including PIN (Personal Identification Number), phonebook, short messages and other additional system services. Please handle the SIM card with care, twisting or pressing it may cause damage. If it is lost, please contact your network operator immediately for help.

### **Installing your SIM card**

Switch off your phone before installing the SIM card. To install the SIM card at the back of the phone, follow the steps below:

1. Turn the phone over to the back, open the back cover and remove the battery by pushing up the battery. With the metal contacts of the SIM card downward and the unfilled corner against the one within the groove, insert the card into the groove from top to bottom.
2. After the card is inserted into the groove, insert the bottom of the battery into the fastening groove of the phone, and push it down till the metal contacts of the battery completely meet with battery connector in the phone, then push the cover back.

### **PIN code**

It is Personal Identification Number used to access the SIM card. If PIN code protection function has been enabled, the screen will indicate 'Enter PIN:' when switched on. You must input correct PIN code at this time prior to using the phone.

You can get the PIN code while obtaining the SIM card from your network operator. Usually the PIN code is 4 digits. During input the PIN code, the screen will display '\*' to substitute the input content to ensure confidentiality.

**<Warning>:** If you input wrong PIN code for three consecutive times, the SIM card will be locked. Please contact the network operator immediately for assistance of decoding. Attempt to decode the card by yourself may possibly cause the SIM card to fail permanently.

### **Charging your battery**

- The battery used in the phone is rechargeable. New battery must be fully charged before it is used for the first time. Only after several times of charging and discharging can the battery's efficiency made the best of.
- To ensure the battery in optimal state, we recommend you discharge the battery fully at least once every month by consuming the power until the phone is switched off automatically.
- During the course of charging, it is normal to find the battery and the phone slightly heat-up. The phone will automatically protect itself when battery temperature rises so as to control temperature variation.
- The handset will give off alert as the battery is running out. When the power has run out the handset will be switched off automatically.

**Note:** Actual time of usage of the battery varies according to different operation modes and settings of network base station. If you use the phone when battery is rather low, the phone may switch off automatically. Please recharge in time.

### **Procedure for battery charging**

- Connect the charger to a main socket, and insert the charging plug into the jack of the phone.
- At this time phone starts charging. The battery symbol will be gradually lengthened from right to left.
- You may choose to charge the battery under power-off or standby state. If the phone is charged under power-off state with SIM card inserted, it will be started and display the text of 'Charging'.
- When the battery is fully charged, charging operation stops automatically. The battery symbol on the screen will maintain full-grid. At this time please unplug the charging plug.

**Note:** 1. To ensure safety, neither change the parts and fitments of the battery by yourself nor take off the battery outer case.

2. Please use charger of original make. Using charger of your choice may cause your phone to damage.

## 6. Basic operations

### **Switching on**

Pressing and holding the 'on/off' key in the standby state may switch on the phone. It will automatically search the network if the SIM card and the phone have no password protection. After the phone is registered in CDMA network, signal will be displayed at the top left corner of the screen. The phone is now in the standby state and you can make or answer a call.

Your phone remains in a searching state if it fails to find the available network system.

If a password or PIN code for the phone is required after it is switched on, please input the correct one, and '\*' will be displayed on the screen as the content during the entry, then press the right soft key for confirmation. After unlocking, the phone will display the signal strength.

### **Switching off**

To switch off the phone, please press and hold the 'on/off' key for 2 seconds and more in the standby state. When the phone displays prompt 'power off', the phone will switch off.

**Note:** If you switch off the phone directly by taking off the battery, some information to be stored in the SIM card and phone may possibly get lost, which may cause inconvenience.

### **Making a call**

Under standby state, input number directly via the keypad. In case of international number, press '0' twice to input '00' first or press '0' until '+' displays and then input the number completely. Then press the 'Call control' key to make the call.

If you want to make a call to the fixed telephone in other cities, please input long-distance area code.

During dialing, you can hear a ringing tone from the other party and after the call is connected, you can see a call timer on the screen. If the call fails, possible reasons would be:

- 'Line Busy' means the called party is busy or there is no available line in the network.
- 'Rejected' means this call is barred, or you have enabled call barring. Please check your network setting.
- If the called party's phone is power-off or out of service range that is unreachable, the network system will inform you.
- If the called party is in a conversation, please press the 'on/off' key and redial after a while.

If the dialed number is stored in the phonebook, then the name of the called party will be displayed on the screen.

To end a call, you can press the 'on/off' key. When a call is ended, the call timer stops and the text 'Call ends' is displayed on the screen.

### **Saving a number by dialing**

You may save the other party's number with phonebook, or by dialing under standby state. The number saving procedure of the former method is described in details in communication phonebook menu. Specific steps for saving a number by dialing under standby state are as follows:

- Input the other party's phone number under standby state.
- Press the left soft key. You may save this number as 'New' (the number is saved in the phone), to 'Existing' (add this number to an existing contact), save this number in the SIM card, search, let operation pause or use the IP number to dial.

### **Adjusting the volume of earpiece**

During a conversation, you may press the up and down-direction key to adjust the volume of earpiece.

### **Answering a call**

- When a call is incoming, the phone will prompt you according to the incoming call prompt mode you have set. To answer a call, press the 'Call control' key to answer the call directly or any key (if 'Any Key Answer' is set on) to answer. To reject a call, press the 'on/off' key and the other party will hear a busy tone.
- If you have enabled the automatic answer function and the earphone is connected with the phone when a call is incoming, the phone will answer the call automatically after a certain period of time if you don't reject the call. If you have subscribed to the caller number identity service, then during the conversation caller number will be displayed on the screen. If this number is already saved in the phonebook, then caller's name will also be displayed on the screen.
- To end a conversation, press the 'on/off' key.

**Note:** If you have subscribed to the call diverts services, incoming call may be diverted to the specified number automatically

### **Silent start**

When a call is incoming, 'Silence' will be displayed at the bottom of the main screen and your phone will prompt according to incoming call prompt mode. When ringing tone or vibration is enabled and you press left soft key to select silence, the program will turn off the ringing tone or vibration function to protect you against the interference of ringing tone or vibration.



### Recent call numbers

This handset can store 60 recent call numbers. On standby screen, press the 'Call control' key to display recent call numbers. You can press the up and down-direction key to view the called numbers and press the 'Call control' key to directly dial the selected number.

Besides, you may access the call record menu to view the recent dialed-out numbers.

### Missed call

If there is (are) missed call (s), 'Missed N Call(s)' will be displayed on the main screen. You can access the call record menu to view the record of the calls missed.

## 7. Using the menu

### Enter the menu

Under the standby state, press the left soft key to access the main menu of the phone. Under the main menu interface, press the key '1—9' to access the corresponding 'Menu option list'.

The main menu have total 12 options, all menus of the phone have the function of text prompt for corresponding function. Each set of menu is further divided into multi-item sub-menu. Menu functions may let you set, check or change the phone's various functional settings to meet your personal requirements. Please refer to the following 'Menu option list' for selection of the functions you require.

- Press the direction keys to select from the menu. Press OK key or left soft key to confirm to enter the sub-menu list of the selected menu. Then press up and down-direction key to select and press the left soft key to confirm or enter into the lower-level menu.
- Press the right soft key to return to higher-level menu. Press the 'on/off' key to exit the menu directly and return to the standby screen.
- In editing state, the right soft key has deleting function. Press it once to delete one character and hold it to delete all the input characters.
- In options, 'On' or 'Activate' is to enable corresponding function and 'Off' or 'Cancel' is to disable corresponding function.

## Menu

### Option list

SMS	Write SMS, Inbox, Outbox, Sentbox, Draftbox, Template, Setting, Delete, Memory Status, Voice Mail	
Contracts	All Contracts, Search Entry, Add New Entry, Copy, Delete, Caller Groups, Memory Status	
Call History	Missed Calls	
	Received Calls	
	Dialed Calls	
	Delete Calls	Delete Missed Calls, Delete Received Calls, Delete Dialed Calls, Delete All
	Call Time	Last Call Time, Total Dialed, Total Received, Reset All Time
Application	GSTK WAP	
Brew	Mobile shop, , Settings, Help	
Profiles	General, Meeting, Outdoors, Indoors,	


Multimedia	Video Recorder	
	Video Player	
	Sound Record	
File Manager	Phone	
	Card	
Settings	Phone Setup	
	Display Setup	
	Call Setup	
	Videophone setup	Test Settings, rotation, Select Mute File, Display Setting, Record Setting, UUS Setting, Select Overlayfile
	Security Setup	
	Restore Factory Sett	
Tool	Alarm, Calculator, Stopwatch, World Time, Calendar	
Extra	Game	Snack, Russia Block
	Camera	
USB Disk Mode		

**Note:** This menu structure only lists the main menu of this phone and for detailed parts please see the phone's software.

## SMS

Message function is a network service. You may be required to subscribe to the service from your network operator prior to sending and receiving short messages. Under standby status, you can use the up-direction key to access the short message menu.

A message is sent to the messages center of the network, then to the targeted user by the network. If the targeted user does not switch on his phone, the network will store the message temporarily.

When the phone receives a new short message, you will be prompted according to setting and the icon  will appear at the top of the main screen to indicate unread short message.

Press the up and down-direction key in the message list interface to browse then press OK key. Press the up and down-direction key to scroll over pages.

## WAP

The phone provides facility to use WAP services over phone.

- Homepage: We can access the predefined homepage directly using this option.
- Open URL: We can input the URL address manually to open it in WAP browser. Please note that some of the URL are not supported by the WAP browser.
- Webpage directory: The list of webpages surfing during internet session.
- Histories: The phone keeps track of the all history of internet session.
- Bookmarks: you can add your favorite webpages to the bookmarks.:
- Refresh: you can update your content
- Advanced Function: Including proxy setting, security setting, reset to default, audio directory, image directory, advanced option, about

Access bookmark: To execute the selected bookmark.

- 1 Add new bookmark: To add new bookmark.
- 2 Delete: Delete the selected bookmark.
- 3 Delete all: Delete all the bookmarks.

- 4 Edit bookmark: To edit the selected bookmark.
- 5 Lock/unlock bookmark: To lock & unlock the selected bookmark..
- 6 Create new directory: To create the new directory to keep the bookmark separate for convenience.
- 7 View bookmark: To see the bookmark details.

Advance Function: To set the advance setting of WAP function.

CDMA service provider to access WAP.

1 Security setting: To set the security option.

2 Pay URL setting: To make list of pay or billing URL.

3 Reset to default: To reset the setting on factory default.

4 Audio directory: To access the audio list.

5 Image directory: To access the Image list.

6 Advance option: To set the advance option like Cookie setting, Clear cookie, Background sound setting, cache & clear caches.

•Exit: To exit from the WAP option.

## **MMS**

The phone supports to send & receive the multimedia messages. This service requires support from service provider. Following are the submenu option of MMS menu.

Draft Box: To keep the new drafted multimedia messages.

Receive Box: To keep the incoming multimedia messages.

Sent Box: To keep the outgoing multimedia messages.

Template Box: To keep the preburnt multimedia messages.

Notify Box: to keep the deleted multimedia messages for recycle.

## **Write Message**

You can create a text message in this menu.

Every text message has a capacity of 700 characters.

- Send: Send text message.
- Save and send: Send text message and save it to outbox.
- Send to many: Send text message to others (up to 10 numbers).
- Send by group: Send text message to all the members of one group.
- Save: Save text message to draft.
- Use template: Insert common phrase in the text message. It provides you with 10 common phrases.
- Insert object: You can insert picture, animation, melody, sound etc. in the text message.
- Input method: Switch input methods you need.

## **Inbox**

It is used for reading short messages received. In the inbox, the phone can store up to 50 short messages. You may press up and down-direction key to browse the short message list. Press the left and right-direction key to scroll over the list. Under short message reading state the following options are available. You may perform different operations according to your own requirements.

- Delete: Delete the short message you are currently reading.
- Reply: Reply the short message you are currently reading.
- Forward: Forward the short message you are currently reading to others.
- Call Sender: Call the number of the short message.
- IP call: use the IP number to dial the parties' number.
- Move to SIM: move the message to SIM card.
- Save Number: Save the number of the short message to the phone or SIM.

## **SIM**

It is used for storing the short message that received.

## **Outbox**

It is used for storing the short messages you have saved or sent. It can store up to 50 short messages.

### **Sentbox**

It is used for storing the short messages you have sent.

### **Draftbox**

After editing a new text message, choose "Save". The message will be saved into draft box. If the message displays "No number", it means there is no target party to be sent. If the message isn't sent successful, it will be saved to the "Drafts".

### **Template**

There are 12 common short phrases stored in the phone. You can edit or delete the common phrases. After deleting, the phrase will display empty.

### **Delete Messages**

- Delete outbox: Delete all short messages stored in the outbox.
- Delete Inbox: Delete all short messages in the inbox in the phone.
- Delete sentbox: Delete all short messages in the sentbox in the phone.
- Delete draftbox: Delete all short messages in the draftbox in the phone.
- Delete all messages: Delete all short messages stored in the outbox、inbox、sentbox 、draftbox

### **Message Settings**

- Storage Location: Save the received short message to the phone or SIM card.
- Delivery ack: This is a message sending receipt. It's used for indicating whether the message is sent successfully or not.
- Priority: To set the message to be sent as urgent or normal.

Voicemail number, Call voicemail box

### **Voice Messages**

**Call Voice Mailbox**: Call the voicemail number that has been set.

**Voice Mail Number**: Display the voicemail number you have set. You may also modify this number.

## **Contact**

Under the standby state, press the right soft key to access the contact. After accessing the phonebook, press up and down-direction key to browse records. When the cursor stops at a certain record, press the left soft key to access the menu of various operations for this record.

### **List all**

All contacts      Write SMS/Add Personal Ring Tone/IP call/Edit/Delete/Copy/Move to

### **Detail**

This submenu displays such detail of this record as name, number etc. You can select each item and then edit it.

### **Search Entry**

This handset provides a way to search for phone number by name. After correctly inputting the name to be searched, press the left soft key and the screen will display the record you are searching for.

### **Add new Entry**

After accessing the Add menu, you may select to add a record to your phone or the SIM card.

Input name and number after selecting storage location to add the record. If you need to add other information to the record, you can do this in 'Edit' menu.

### **Grouping view**

You can view the records in the phonebook by group (VIP, family, colleagues, friends, Others)

### **Delete**

Delete a current record of phonebook.

### **Copy**

(Copy to SIM): Copy all the records/Select One by One in the phone to SIM card.

(Copy to phone): Copy all the records/Select One by One in the SIM card to phone.

### **Memory status**

Display the memory status of the phonebook in SIM card and the phone.

**Including all contracts, Search Entry, Add New Entry, Copy, Delete, Caller Groups and Memory Status.**

## Call history

### Missed calls

If there is (are) missed call (s), a prompt 'Missed N Call(s)' will be displayed on the standby screen. At this time you can view the detailed information of the missed calls in the 'recent calls /missed calls' menu. Each record contains number or name (if number is already in the phonebook), date, time etc. Press the up and down-direction key to view the information of other missed calls. Press the 'Call control' key to dial out this number and press the right soft key to return to higher-level menu. Missed calls are divided into the following two situations:

1. If the number is not stored in the phone or SIM card, the phone number will be displayed in the missed call list. Select one of the numbers and press the left soft key to access the sub-menu of this missed call, which has the following 5 items:

- VoIP: use the VoIP number to dial the missed call.
- Save To New Location: Save this missed call number as a new record to the phone.
- Save To SIM: Save this missed call number to the SIM card.
- Save To Existing Location: Save this missed call number to an existing record.
- Send Message: Send short message to this missed call number.
- Delete: Delete this missed call number record.

2. If this number is already stored in the phone or SIM card, the caller's name will be displayed in the missed call list. Select one of the names and press the left soft key to access the sub-menu of this missed call, which has the following 3 functions: VoIP, Send message and Delete entry.

### Received calls

Save 20 recent received calls automatically. Functional operation and display mode is the same as those of missed calls.

### Dialed calls

Save 20 recent dialed calls automatically. Functional operation and display mode is the same as those of missed calls.

### Call time

(Received calls): Totalize all received calls time since the timer was reset last time.

(Dialed calls): Totalize all dialed calls time since the timer was reset last time.

(Total airtime): Totalize all dialed calls time since the timer was reset last time.

## Brew

**It is provide mobile shop, seting and help.**

## profiles

Here you can set different profiles according to your requirements. You have four choices: General, Meeting, Outdoors, Indoors, Headset and Silent.

- Activate: Set to be current active profile.
- Customize: To edit sound properties of current profile.
  - Caller Ring tone: the ring for the incoming call. 10 ring tones/Add from Memory card for choices
  - Message tone: the ring for the incoming messages. 10 ring tones/Add from Memory card for choices.
  - Alarm tone: 10 ring tones/Add from Memory card for choices
  - Power on/Power Off: 3 ring tones
  - incoming call alert: Ringtone/Ascending/Descending/Vibrate/Vibrate & Ringtone/Ringtone after vibrate/Vibrate after ringtone
  - Call alert: set the prompt mode of coming call alert. Off, ring, vibrate, vibrate then ring.
  - Message alert: set the prompt mode of coming message alert. Off, ring, vibrate, vibrate then ring.
  - Missed call alert: set the prompt mode of miss call alert. Off, ring, vibrate, vibrate then ring.
  - Volume: set the volumes of ring tone, voice, key tone.

## File manager

### Open

Select one folder and press the "Option":

- Open: Open the selected folder.
- Create folder: Create a new folder in the selected folder.
- Rename: Rename the current folder.
- Delete: Delete the current folder.
- Sort: Sort and display the files in the folder by name, type, time and size.

*Note: You would have different options according to different files.*

#### **Create a folder**

You can use this function to create a new folder at a specified place.

#### **Format**

You can format all the data in the memory card. The system will create a default folder. Because the data can not be recovered after formatting, please use this function carefully.

## **Multimedia**

### **Video Player**

You can play, forward, rename, delete, sort and save your videos or films.

- Play: Play the specific video or film. Press volume key to adjust volume; press left or right direction key to control the playing speed; press "OK" key to let the playing pause; press "" to switch between full-screen and semi-screen during playing.
- Forward: Send video or film to Screen Saver, power on display or power off display. You can also send the files out by multimedia message and Email.
- Rename: Rename the video or film.
- Delete: Delete the selected file.
- Delete all files: Delete all the videos or films.
- Sort: Sort the videos or films by name, type, time, size or none.
- Storage: You can save the videos or films in the phone or memory card.

### **Audio player**

- ◆ Choose "List" to access music list.
- ◆ Play: Play the current song.
- ◆ Repeat on/ off
- ◆ Detail: View the information of the song.
- ◆ Add to rings: Send the current song to the Profiles.
- ◆ Add: Add more songs to list. If you set the "List auto gen" on, the list will add the songs from appointed file. So if you want to add the songs from other files, please set "Auto list gen" off.
- ◆ Remove: Delete the song from list.
- ◆ Remove all: Delete all the songs in list.
- ◆ Settings: You can set the parameters of MP3 player.
- ◆ In the player interface, you can use direction keys and left/right soft key to operate it.

### **FM**

Auto tuning: Search the channel programs automatically. Press the left/right direction key to search, and it will stop tuning when the receiving channel been searched.

Channel list: Display the searching channels list or save the channels you have entered.

Manual tuning: Tuning the frequency yourself. Using left/right direction key for operations.

Radio off: Turn the radio on/off.

Set frequency: Enter the channel frequency yourself; it will be saved in channel list.

Switch to louder speaker/switch to headset: Switch the playing mode to speaker or using earphone.

Set volume: set the volume of FM radio. You can press up/down key to adjusting volume under the FM playing interface.

### **Browser**

Your handset has a built-in web browser and 3G opens up a world of communication, information and entertainment services. You can ask for directions within major cities, get the latest news, select Browser and then press OK key to access the browser interface.

**HOME** Takes you to the Big Pond web site.

**GO TO** This function allows you to store and edit frequently accessed sites. Select Enter address to input a new URL, or select the Last address, or Recent addresses then press OK.

**Bookmarks** All accessed page addresses can be saved as bookmarks in your phone.

Under Options you can:

- Add: Add a new site to the bookmark list.
- View: Load the current page again.
- Address: Show current address.
- Edit: Edit and save the title and address of the selected bookmark.
- Delete: Delete the selected bookmarks.
- Delete all: Delete all bookmarks.

This function allows you to check the web sites you have already visited.

**Page memo** This function displays the list of pages saved as an off-line file.

**Push messages** This shows a list of all the messages pushed to your browser. Not all network providers use this feature.

### Options

You can set the Browser settings in this options menu.

- Home: Input the homepage of the browser.
- View: Change the settings relating to animations, images, tables and scripting.
- Proxy: Select to use the proxy or not and set the proxy server address, port, username and password.
- Cache: Set the browser cache parameters.
- Cookies: Set cookies parameters – cookies can be helpful to remember your own web preferences.
- Certificates: View the certificates provided in the browser.
- Push settings: Set to receive push messages.
- APN settings: Access Point Name. Preset by your Network Provider.
- Background music: Set the background music when browsing.
- Reset: Restore the original Browser settings.
- About browser: View browser information such as version, etc.

## Settings

### Phone Setup

(Language): English only supported.

(Speed dial): If a number in the Contact is set for a certain single-key dialing, pressing and holding this key may call this number. You can set one dial key from '1' to '9'.

### Display Setup

(Wallpaper): After starting up to idle, display this picture as background.

(LCD Backlight): This option provides you different time periods for your selection as the backlight duration time. The screen closes the backlight automatically when time is out. The phone has 'Always on', '10 seconds', '30 seconds', 'Always On' three choices.

(Brightness): You could choose different brightness type of the LCD backlight by pressing the direction key.

### Call Setup

- Call diverts: Divert Calls is an additional service of the network, which may divert incoming calls that meet requirements to other number specified. Users must subscribe to this service from your network operator prior to the following operations.
  - ✧ Immediately: when someone is calling you, it will divert to the number you have set before.
  - ✧ Busy: When somebody is calling you and you are in a conversation, it will divert.
  - ✧ No Answer: When someone is calling you and you did not answer the call, it will divert.
  - ✧ No answer or busy: when someone is calling you and you are busy or no answer, it will divert.
  - ✧ To voicemail immediately: when someone is calling you, it will divert to the voicemail immediately.
  - ✧ To voicemail when busy or no answer: when someone is calling you and you are busy or no answer, it will divert to the voicemail
- Call Waiting: If call waiting function is enabled, when someone is making a call to your phone and you are in a conversation, the third party will be kept hold.

Note: when you are having a conversation and if the other party is calling you, press 'call control' key to switch between the two parties for conversation.

**Note:** the functions of diverting calls and call waiting must supported by the local operator.

(Any Key Answer): If Any Key Answer is set 'On', when a call is incoming, user can press any key to answer the call.

(Auto Answer): You can set automatic answer 'Off', '5 Seconds' or '10 Seconds'. When a call is incoming and your phone is connected with the earphone and you did not perform any operations, the phone will answer the call automatically according to the time you set.

(Answer when fold is open): when a call is incoming, user just need open the fold to answer the call.

## **Security setup**

You must input correct phone password before accessing Security setup menu. The initial password is 1234.

(SIM PIN LOCK)

PIN code is a security password to protect the SIM card, which is provided by the network operator. You must take good care of it and not disclose it. You may set the PIN code verification on to prevent illegal user to use your SIM card. You may also change the PIN code.

- PIN Check: If 'SIM Check' is set on, from then on the system will prompt you to enter the phone's password when switched on and only when the password is correctly entered can you use the phone.

**Note:** In order to protect your benefits, if the PIN code is entered incorrectly for three consecutive times, the SIM will be locked. At this time the card will not work normally. Only after the PUK code provided by the network provider entered can the PIN code be decoded.

(Phone Lock)

- Password request: If 'Password request' is set on, from then on the system will prompt you to enter the phone's password when switched on and only when the password is correctly entered can you use the phone.

(KeyPad Lock)

Keypad can't be automatically locked if 'Off' is selected. Otherwise, after the time selected, for example 5/30/60 seconds, 5 minutes as your option, keypad will be automatically locked without any key's operation. During the time of key guard, you can also answer the incoming call and the keypad will be locked till user press 'left soft key and " \* " key' successively.

(Call History Lock)

- Password request: If 'Password request' is set on, from then on the system will prompt you to enter the phone's password when switched on and only when the password is correctly entered can you use the phone.

(Change Password)

Change the password via this option. Enter the same new password twice and press the left soft key to confirm. The new password will become effective. During this course you may press the right soft key to discard the change at any time and return to higher-level menu.

You can change PIN password/phone password/call history password

## **Restore Factory Settings**

This function is used for restoring to the default factory settings.

# **TOOL**

## **Alarm**

You may set 3 alarm clocks as required.

Operation tips:

- Press the up and down-direction key in the tools main menu and select alarm. Press the left soft key to access the alarm list.
- Press the up and down-direction key to select one of the alarms and press the left soft key to access the alarm setting.
- Press the left and right-direction key in the alarm clock setting interface to select alarm clock setting content. You may set the alarm clock's State, Time, Mode and Prompt.
- When you have selected state, press the up and down-direction key to select 'open' or 'close'; when you have selected time, you can input the time directly; when you have selected mode, press the up and down-direction key to select the mode of the alarm.

## **To Do**

With the To Do function you can use your phone to record the important events at any time. The operations on the To Do include Content, Start Time, End Time and Alarm. If you have set an alarm clock prompt for the memory, the phone will ring and the prompt will be displayed at the time you set.

## **Calendar**

You can view the calendar for more details. This function can memorize your schedule and remind you by alarm.

View tasks: To see the schedule of the date. You can set time, date, text, alarm to the date. The schedule can be sent to files or sent by short messages and multimedia messages.

## **Stopwatch**

It provides timing function, including typical stopwatch and nWay stopwatch.

- Typical stopwatch:
  - Split timing: Choose "Split timing" then press "Start" to start timing. When you want to time separately, press "Split". It will be shown on the screen upon the runtime. Press "Stop" to end the stopwatch. Press "Resume" to go on timing and "Reset" to reset the stopwatch. Press "Back", the screen shows "Save" window then press "Yes" to save.
  - Lap timing: Choose "Lap timing" then press "Start" to start timing. Press "Stop" to end the stopwatch. For more details, please refer to the "Split timing".
  - View record: The phone will show the name list of time group or the list of last time. You can view the record you have saved. You can also delete the record stored in the phone.



- nWay stopwatch: On the same interface, press “up, down, left, right” direction key to select any stopwatch to make timing.

### **World Time**

To view the time in different locations of the world,

## **Service**

### **SIM Application**

This function allows you to use various kinds of service offered by CDMA operator.

### **WAP**

This function allows you to use various kinds of services on the Internet including weather forecast, news, finance, economic information and so on, which are provided by ISP (Information Service Provider). According to the services of the SIM card, there will be some new menu options. This function can not be used without the support of SIM card ISP. More information please contact with the ISP.

- Home page: on the each mode, one homepage address can be saved. When you use WAP, firstly entering the homepage in this mode.
- Refresh: Refresh the current page.
- Bookmarks: In the option menu, you can manage the bookmark in the following ways:
  - Go to: Go to the website.
  - Edit: Edit the selected bookmark and website.
  - Send: Send the bookmark by multimedia message or text message.
  - Delete: Delete the selected bookmark.
  - Delete all: Delete all the bookmarks.
  - Add bookmark: Add a bookmark.
- Recent page: You can view the records of the latest visited web pages.
- Enter address: Input the website address, and then open the web page.
- Set as homepage: Set a website as homepage.
- Save picture: Save a picture of website.
- Service inbox: You can receive service information sent by your ISP.
- Settings:
  - Edit settings: Edit home page, network account, user name and password.
  - Browse options: You can set waiting time and choose to show the images or not.
  - Service message setting: On or off.
  - Clear cache: Too much data in the cache will affect the network speed, you should clear cache.
  - Clear cookies: clear the cookies data.
  - Trusted certificates: if you want to log in website, you need to acquire the trusted certificates
- Exit: exit the website.

## **Extra**

### **Games**

This handset provides one ultra-large screen fully-graphical games: Russian Block./ snake. Here, you can enjoy a pleasant sensation brought by the games relaxed.

Select Games from the main menu to access the game list. Press the left soft key to confirm. When the game interface and description of the selected game appear, press the left soft key again to start the game.

1. Game rules: It has 7 different squares. There are total 3 levels, 'Easy' 'Hard' 'Very hard', corresponding to different falling speeds. Default speed is 0, 500 score for speedup 1. When the speed is up to 8 or 16, you could choose to enter next difficult level.
2. Help: You can adjust the direction of falling square and move it to the right or to the left to put it in proper position. Key \* to pause or to restore the game; Key up-direction or Key 2 to adjust the square direction; Key left-direction or 4 to move the square left; Key right-direction or 6 to move the square right; Key down-direction or 8 to accelerate the falling speed.

### **Camera**

You can use camera to capture the scene you like. The camera lens is in the back of the phone, and the pictures are displayed in the viewer window. You can turn on the camera by pressing right side key for shortcut in standby mode.

If there isn't enough space in the memory card to save files, please delete some old photos or other files in order to release more memory space.

Explanations for the options of camera:

Option	Brief state
Album	View existing photos.
Camera setting	Cont shot: On, off. In previewing window the shortcut is "5" key.
	Shutter sound: Sound 1, sound 2, sound 3, off.
	EV: -4~+4
	Banding:50 Hz, 60 Hz
	Delay Timer: 5 sec, 10 sec, 15 sec, off. In previewing window the shortcut is "4" key.
Image setting	Photo size:176×220,80×60, 160×120, 320×240, 640×480
	In previewing window the shortcut is "8" key.
	Photo quality: High, normal, low. In previewing window the shortcut is "4" key.
White balance	Auto, daylight, tungsten, fluorescent, cloud, incandescence.
	In previewing window the shortcut is "2" key.
Scene mode	Auto, night. In previewing window the shortcut is "6" key.
Effect setting	Set especially good effect. In previewing window the shortcut is "1" key.
Add frame	Off, frame 1, frame 2
Storage	Store photos in phone or memory card.
Restore default	Restore user's settings back to the original settings.

Note: Please conform to the relevant laws to use the camera and record function. Inappropriate use may infringe the owner's right.

### USB Disk Mode

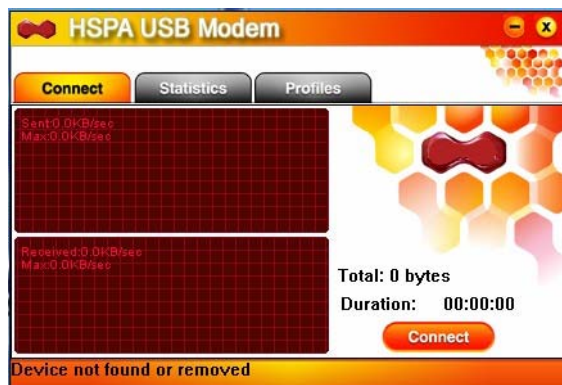
When connect USB cable with PC, the battery will be in charging status, you could see the charging animation keep moving until the phone is full charged. If T-flash card is put in the phone, by select "Act" option, the phone could be activated as U Disk.



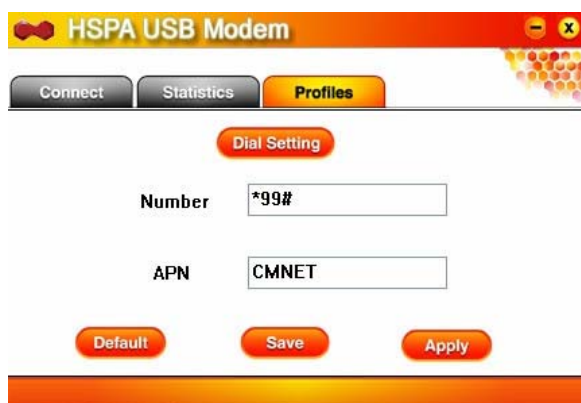
◆ when connect USB cable with PC

there will be a remainder.

◆ According to the remainder to finished the installation procedure. There will be a graphical interface.



◆ and then enter a right password.



## 8. Operations of input methods

This handset supports English and Spanish. You can set the language under the path [Settings]->[Display Setup]->[Language]. Input methods can be applied to many text input areas such as short message input name in the phonebook, standby greetings etc. This handset provides the following input methods: Multitap and Numbers. Under editing status, press the key '#' to switch between these input methods, press the key '\*' to enter into symbol input interface.

### Multitap input method

Multitap input method is to input letters by pressing corresponding keys with letters on the keypad. Normally it is used to input English. Wait a second after inputting a letter for the black strip on the letter to disappear and then you can continue to input the next letter. Press the right soft key once to delete the last letter and press and hold the right soft key to delete all input.

Each key corresponds to 3 to 4 letters and press the same key quickly for several times to switch between these letters.

### Numbers input method

Numbers input method is used for inputting numbers. Press the '0'-'9' keys on the keypad to input any number you want.

### Symbols input method

Symbols input method is used for inputting some special symbols and punctuations. Under text editing state, press the key '#' to enter into symbol input method. There are symbols on the screen for your selection. Press the numeric key before the symbol to select the symbol and return to text editing state. If the symbol you need is not displayed on the screen, please press the up and down-direction key on the keypad to scroll the page until you find the symbol you need.

## Appendix I Common fault diagnoses

Trouble	Possible reasons
The phone cannot be	1. Any power in battery? 2. Battery is installed properly?

switched on	
Battery cannot be charged	<ol style="list-style-type: none"> <li>1. Check if the charger is connected with the phone correctly.</li> <li>2. Check if the charge is connected with the socket correctly.</li> <li>3. Is the battery usable? The performance of the battery will degrade after using for several years.</li> </ol>
Fail to link the network	<ol style="list-style-type: none"> <li>1. The signal is too weak, or there may be some radio interference round. View the signal indicator on the screen to see whether it is empty.</li> </ol>
Cannot make a call	<ol style="list-style-type: none"> <li>1. Is the phone registered in the network? Check whether the screen displays signal indicator.</li> <li>2. Is the 'bar outgoing' function enabled?</li> <li>3. Calling prohibited due to call charges not paid?</li> </ol>
Cannot answer a call	<ol style="list-style-type: none"> <li>1. Is the phone registered in the network?</li> <li>2. Incoming call prohibited due to call charges not paid?</li> <li>3. Is the 'call diverting' function enabled?</li> <li>4. Is the 'bar incoming' function enabled?</li> </ol>
Unable to use some functions	Consult with network operator for whether it supports these functions and whether subscription is required.

## Appendix II Abbreviations and explanations

SMS	Short Message Service
IMEI	Electronic Serial Number
MCC	Mobile Country Code
MNC	Mobile Network Code. For example, China Unicom's MNC is '01'; China Mobile's MNC is '00'.
Call diverting	A service provided by the network, which allows you to divert an incoming call to a specified number in different circumstances. Normally it is divided into: divert all, divert if busy, divert if no answer and diver if not connected.
Divert all	All incoming calls will be diverted by the network unconditionally.
Divert if busy	Divert the incoming call while you are already on line.
Divert if no answer	The network will divert the incoming call if the phone rings or vibrates for a specific time and you haven't answered it.
Divert if not connected	The network will divert the incoming call when the network fails to find your phone (switched off or out of the service area).
Roaming	Refer to the phone not used in the range of its local registered network. It includes international and domestic roaming. In this manual it refers to international roaming only.

## FCC RF Exposure Information and Statement

The SAR limit of USA (FCC) is 1.6 W/kg averaged over one gram of tissue. Device types Q8 (FCC ID: U46-G10) has also been tested against this SAR limit. The highest SAR value reported under this standard during product certification for use at the ear is 0.901W/kg and when properly worn on the body is 0.323W/kg. This device was tested for typical body-worn operations with the back of the handset kept 1.5cm from the body. To maintain compliance with FCC RF exposure requirements, use accessories that maintain a 1.5cm separation distance between the user's body and the back of the handset. The use of belt clips, holsters and similar accessories should not contain metallic components in its assembly. The use of accessories that do not satisfy these requirements may not comply with FCC RF exposure requirements, and should be avoided.

This device complies with part 15 of the FCC rules. Operation is subject to the following two conditions: (1) this device may not cause harmful interference, and (2) this device must accept any interference received, including interference that may cause undesired operation.

NOTE: The manufacturer is not responsible for any radio or TV interference caused by unauthorized modifications to this equipment. Such modifications could void the user's authority to operate the equipment.

NOTE: This equipment has been tested and found to comply with the limits for a Class B digital device, pursuant to part 15 of the FCC Rules. These limits are designed to provide reasonable protection against harmful interference in a residential installation. This equipment generates uses and can radiate radio frequency energy and, if not installed and used in accordance with the instructions, may cause harmful interference to radio communications. However, there is no guarantee that interference will not occur in a particular installation.

If this equipment does cause harmful interference to radio or television reception, which can be determined by turning the equipment off and on, the user is encouraged to try to correct the interference by one or more of the following measures:

- Reorient or relocate the receiving antenna.
- Increase the separation between the equipment and receiver.
- Connect the equipment into an outlet on a circuit different from that to which the receiver is connected.
- Consult the dealer or an experienced radio/TV technician for help.