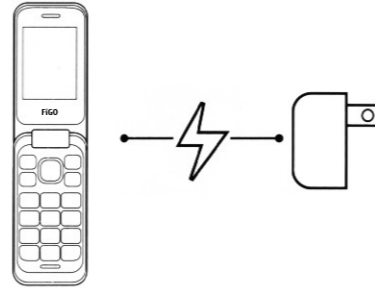


**FIGO**  
Be Cool Be FIGO  
F242

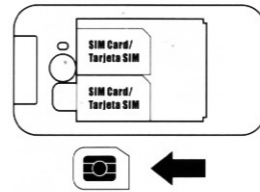


**FIGO SLING**  
QUICK START GUIDE

**1. BEFORE POWERING ON, CHARGE FOR 24 HOURS/ANTES DE ENCENDER, CARGUE POR 24 HORAS**



**2. INSERT SIM CARD/INSERTE LA TARJETA SIM**

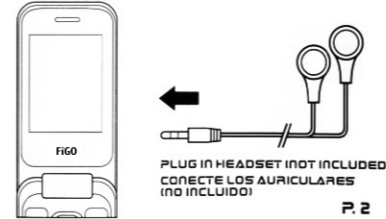


P. 1

**3. GPRS SETTING/ CONFIGURACIÓN GPRS**

**GPRS**  
MENU)SETTINGS)CONNECTIONS) NETWORK ACCOUNT)OPTIONS)NEW ACCOUNT  
RENAME)ACCESS POINT)USER NAME)PASSWORD)GATEWAY)PORT) AUTH TYPE)SET HOMEPAGE) ADVANCED SETTINGS  
MENU)AJUSTES)CONEXION)CUENTA DE RED)OPCIONES)CUENTA NUEVA  
RENOMBRAR)PUNTO DE ACCESO) NOMBRE DE USUARIO)CONTRASEÑA) PUERTO DE COMUNICACIÓN)PUERTO) TIPO DE AUTH)ESTABLECER PÁGINA DE INICIO)COMUNICACIÓN AVANZADA

**4. FM RADIO/RADIO FM**

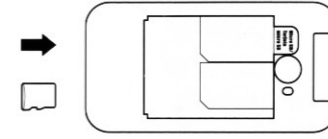


PLUG IN HEADSET (NOT INCLUDED) / CONECTE LOS AURICULARES (NO INCLUIDO)

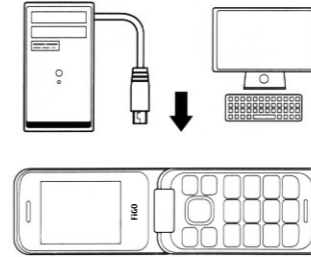
P. 2

**5. AUDIO PLAYER/ REPRODUCTOR DE AUDIO**

**1. INSERT THE MICRO SD CARD/ INSERTE LA TARJETA DE MEMORIA**



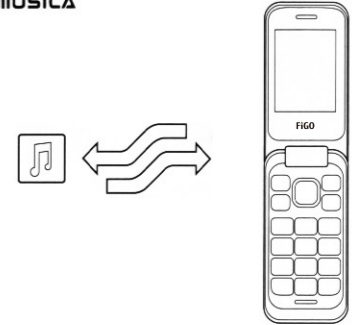
**2. CONNECT THE PHONE WITH THE COMPUTER VIA USB CABLE/ CONECTE EL TELÉFONO CON LA COMPUTADORA VIA CABLE USB**



P. 3

**CONTINUE/CONTINUAR**

**3. COPY AND TRANSFER MUSIC FILES/ COPIAR Y TRANSFERIR ARCHIVOS DE MÚSICA**



**4. ENJOY THE AUDIO PLAYER/ DISFRUTE DEL REPRODUCTOR DE AUDIO**

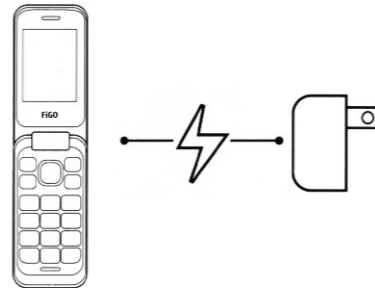
P. 4

**FIGO**  
Be Cool Be FIGO  
F242

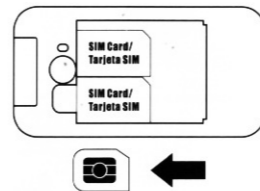


**FIGO SLING**  
QUICK START GUIDE

**1. BEFORE POWERING ON, CHARGE FOR 24 HOURS/ANTES DE ENCENDER, CARGUE POR 24 HORAS**



**2. INSERT SIM CARD/INSERTE LA TARJETA SIM**

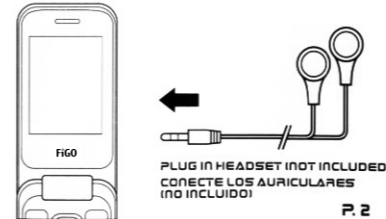


P. 1

**3. GPRS SETTING/ CONFIGURACIÓN GPRS**

**GPRS**  
MENU)SETTINGS)CONNECTIONS) NETWORK ACCOUNT)OPTIONS)NEW ACCOUNT  
RENAME)ACCESS POINT)USER NAME)PASSWORD)GATEWAY)PORT) AUTH TYPE)SET HOMEPAGE) ADVANCED SETTINGS  
MENU)AJUSTES)CONEXION)CUENTA DE RED)OPCIONES)CUENTA NUEVA  
RENOMBRAR)PUNTO DE ACCESO) NOMBRE DE USUARIO)CONTRASEÑA) PUERTO DE COMUNICACIÓN)PUERTO) TIPO DE AUTH)ESTABLECER PÁGINA DE INICIO)COMUNICACIÓN AVANZADA

**4. FM RADIO/RADIO FM**

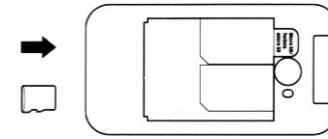


PLUG IN HEADSET (NOT INCLUDED) / CONECTE LOS AURICULARES (NO INCLUIDO)

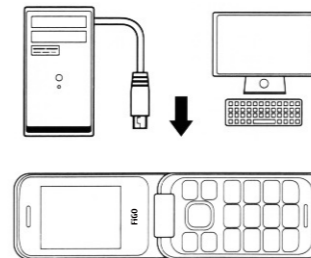
P. 2

**5. AUDIO PLAYER/ REPRODUCTOR DE AUDIO**

**1. INSERT THE MICRO SD CARD/ INSERTE LA TARJETA DE MEMORIA**



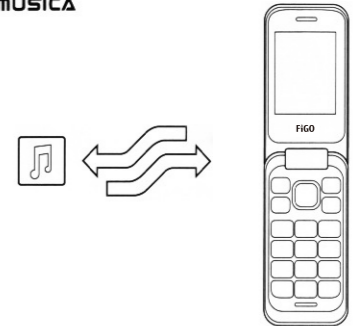
**2. CONNECT THE PHONE WITH THE COMPUTER VIA USB CABLE/**



P. 3

**CONTINUE/CONTINUAR**

**3. COPY AND TRANSFER MUSIC FILES/ COPIAR Y TRANSFERIR ARCHIVOS DE MÚSICA**



**4. ENJOY THE AUDIO PLAYER/ DISFRUTE DEL REPRODUCTOR DE AUDIO**

P. 4

## **FCC Warning:**

Any Changes or modifications not expressly approved by the party responsible for compliance could void the user's authority to operate the equipment.

This device complies with part 15 of the FCC Rules. Operation is subject to the following two conditions: (1) This device may not cause harmful interference, and (2) this device must accept any interference received, including interference that may cause undesired operation.

Note: This equipment has been tested and found to comply with the limits for a Class B digital device, pursuant to part 15 of the FCC Rules. These limits are designed to provide reasonable protection against harmful interference in a residential installation. This equipment generates, uses and can radiate radio frequency energy and, if not installed and used in accordance with the instructions, may cause harmful interference to radio communications. However, there is no guarantee that interference will not occur in a particular installation. If this equipment does cause harmful interference to radio or television reception, which can be determined by turning the equipment off and on, the user is encouraged to try to correct the interference by one or more of the following measures:

- Reorient or relocate the receiving antenna.
- Increase the separation between the equipment and receiver.
- Connect the equipment into an outlet on a circuit different from that to which the receiver is connected.
- Consult the dealer or an experienced radio/TV technician for help.

## **Specific Absorption Rate (SAR) information**

SAR tests are conducted using standard operating positions accepted by the FCC with the phone transmitting at its highest certified power level in all tested frequency bands. Before a new model phone is available for sale to the public, it must be tested and certified to the FCC that it does not exceed the exposure limit established by the FCC. Tests for each phone are performed in positions and locations (e.g. at the ear and worn on the body) as required by the FCC.

For body worn operation, this model phone has been tested and meets the FCC RF exposure guidelines when used with an accessory designated for this product or when used with an accessory that contains no metal and that positions the handset a minimum of 1.0 cm from the body. Non compliance with the above restrictions may result in violation of RF exposure guidelines.