

Content

1 Product Introduction	02
.....	02
1-1 Package	03
Contents.....	04
1-2 Front Panel	
.....	05
1-3 Back Panel	05
.....	06
	09
2 Network Setup	09
.....	11
2-1 Hardware Installation:	11
.....	11
2-2 PC LAN IP Configuration	12
.....	
2-3 Internet Configuration	15
.....	15
2-3-1 Wireless Setup	15
.....	

Copyright © by Telemire Digital Technology Co.,LTD

The product you have purchased and the setup screen may appear slightly different from those shown in this quick installation guide. For more detailed information about this product, please refer to the User Manual on our web site. The software and specifications are subject to change without notice.

Please visit our web site www.telemire.net/router/index.html. All rights reserved including all brand and product names mentioned in this manual are trademarks and/or registered trademarks of their respective holders .

1 Product Introduction

Thank you for purchasing Telemire MOFI broadband router This high cost-efficiency router is the best choice for Mobile / Small office / Home office users, all computers and network devices can share a single wireless

WISP or xDSL / cable** modem internet connection at high speed. Easy install procedures allows any computer users to setup a network environment in short time - within minutes.

Please follow the procedures in this Quick Installation Guide to configure the router.

Note 1: Only one Internet connection (WISP or xDSL/Cable) can be used at the same time.

Note 2: The USB cable is only for charging, it can not replace the battery , if you want to operate the router only three types of power source are recommend Power Adaptor ,Battery and Battery+DC .

1-1 Package Contents

Before you starting to use this router, please check if there's anything missing in the package, and contact your dealer of purchase to claim for missing items:

- ◎ Mofi mobile router (main body, 1 PCS)
- ◎ Quick installation guide (1 PCS) ◎ 5V power adapter(1 PCS)

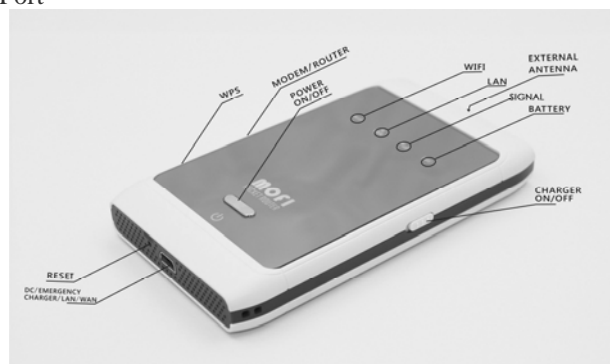
1-2 Panel



MOFI Portable Wireless Router

LED	Light Status	Description
PWR	ON	Router Is Powered on
WAN/LAN	ON	WAN is connected
	Off	WAN is unconnected
	Flashing	WAN port is sending / receiving data
WLAN	ON	Wireless LAN has been activated
	Off	Wireless LAN is disabled
Battery	Flashing	Wireless LAN is sending / receiving data
	Green	Battery Connected
	Off	No Battery
	Orange	Charging

1-3 Switch & Port



Item Name	Description
WPS	Press this button for 2 ~ 5 seconds to start WPS function(enable this feature first).
Reset	Reset the router to factory default settings (clear all settings) Press this button and hold for 3-10 seconds to clear all settings.
Mini USB	WAN/LAN/Power Connector/Charger
Power	Press this button to On/Off device
USB	Charger in?OUT
External ANT	External antenna for signal enhancement

2 Network Setup

2-1 Hardware Installation:

Instructions for using the router to share the Internet with multiple PCs.

(Power on Router.)

(A) Router installation:

1. Connect power adapter to MOFI Router or direct power on with battery.

(B) Cable Modem installation: You can also access Internet by xDSL/Cable modem, please follow the following instructions:

1. Connect the Ethernet cable from the router's USB port (V902) to the LAN port of the modem.

2. Check to make sure the router's LINK LED is lighting; to confirm the cable connections are made correctly.

2-2 PC LAN IP Configuration

Configure the PC LAN setting to automatically obtain an IP address from the router by following the below steps.

Click **Start** in the task bar then select the **Control Panel**



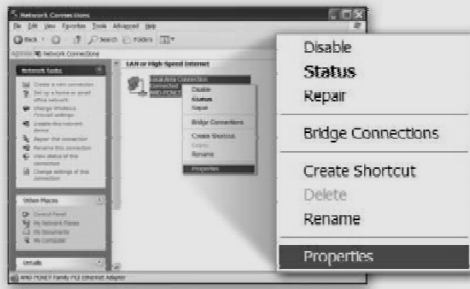
Click "Switch to Classic View" on the left top to see more setting icons.



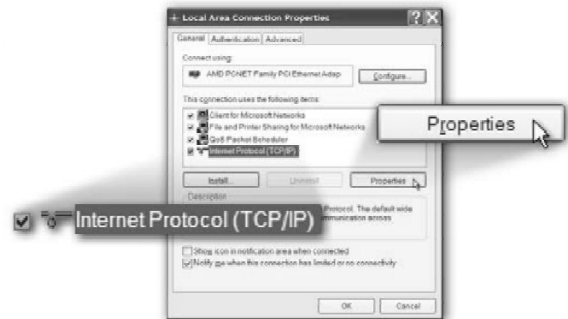
Find an icon “Network Connection” then Double-Click to open the network connection setting.



You will see an icon “Local Area Connection”, select the icon then Right-Click the mouse to open the sub-menu and select the “Properties” .



Select the “Internet Protocol (TCP/IP)” then click the “Properties”



Ensure the parameter marked in blue are checked in “Obtain an IP address automatically” and “Obtain DNS server address automatically” then press “OK” to close.



2-3 Internet Configuration

MOFI Router provides one types of Internet connection method:

wired (xDSL / cable modem) connection. You can access via wired xDSL / cable modem connection.

2-3-1 Wireless Setup



If you still can't access Internet, please enter the router's default IP address: "192.168.2.1" into your PC's web browser and press "enter".

The login screen below will appear. Enter the "User Name" and "Password" and click "OK" to login. The default User name is "admin" and Password is "admin",

If following window does not appear, please make sure you finished 'PC LAN IP Configuration' as described in chapter 1, and then try again.



Click "Next" button.

Select the type of connection method you want.

DHCP ,Static Mode, PPPOE (xDSL)

DHCP (like the cable connection all the network configuration will assigned by server) Static mode the IP address and network setting are fixed provided by your network operator.

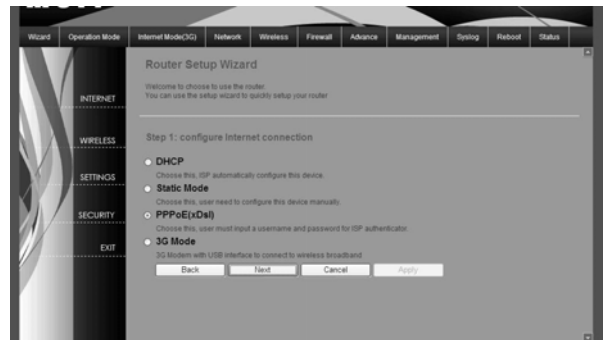
PPPOE it required the user name and password provided by your network operator.

Please check the authentication method you want to use. Most of operators require you to input PIN Code, please input the PIN code provided by operator.

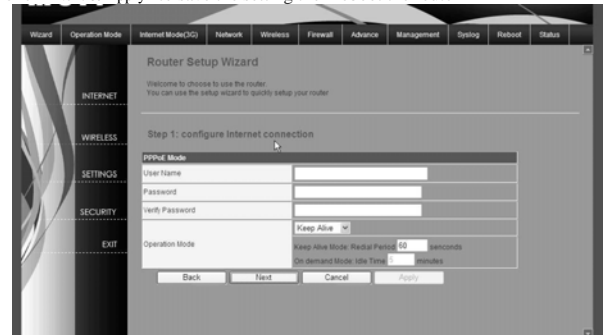
Most of options listed here are optional and you don't have to provide those

information if operator doesn't provide you with those information.

Password box and input the user name / password provided by operator, then click ' OK ' button. Wait for 1 minute (for Router to reboot), then you can access Internet.



Enter the "User Name" and "Password" that ISP provided and leave the Others and click "Next & Apply" to save the setting then reboot the router



3 Advanced Setup

3-1 Change management password

Default password of this router is admin, and it's displayed on the login prompt when accessed from web browser. There's a security risk if you don't change the default password, since everyone can see it.

To change password, please follow the following instructions: Please click 'SETTINGS' menu on the left of web management interface, then fill the details in "Administrator Settings" to change the user name and password.

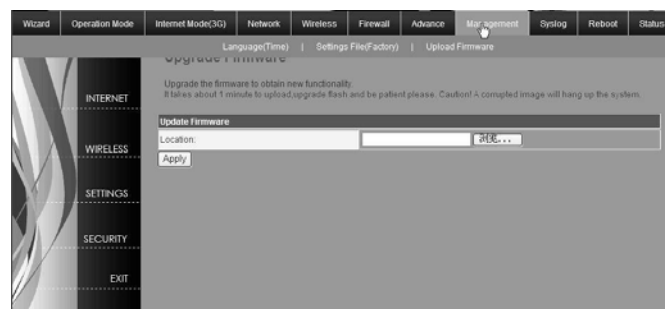
When you finish, click 'Apply'; If you want to keep original password unchanged, click 'Cancel'.

3-2 Firmware Upgrade

The system software used by this router is called as 'firmware', just like any applications on your computer, when you replace the old application with a new one, your computer will be equipped with new function. You can also use this firmware upgrade function to add new functions to your router, even fix the bugs of this router.

To upgrade firmware, please follow the following instructions:

Please click 'Management' located top menu and select "Upload firmware", then the following message will be displayed on your web browser:



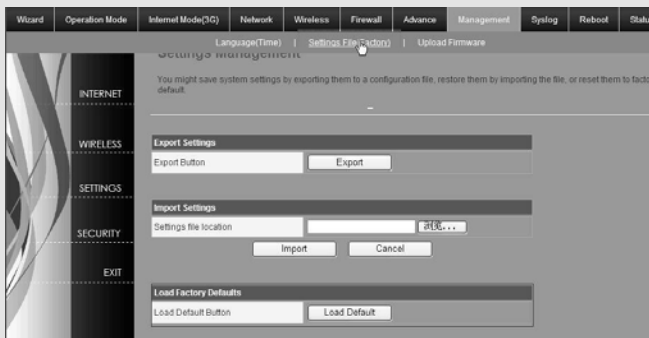
Click 'Browse' button first, you'll be prompted to provide the filename of firmware upgrade file. Please download the latest firmware file from our website, and use it to upgrade your router.

After a firmware upgrade file is selected, click 'Apply' button, and the router will start firmware upgrade procedure automatically. The procedure may take several minutes, please be patient.

NOTE: Never interrupt the upgrade procedure by closing the web browser or physically disconnect your computer from router. If the firmware you uploaded is corrupt, the firmware upgrade will fail, and you may have to return this router to the dealer of purchase to ask for help. (Warranty voids if you interrupted the upgrade procedure).

3-3 Restart and Reset to Default Setting

If you found the router behaves strangely, you can perform a reset, sometimes it will solve the problem. You can either reset your router without losing your current settings or restore to factory defaults. If you wish to reset the router to the factory default settings, select Management then select "Settings File(Factory)". And click "Load Default" to reset your router and it will be available again after few minutes, please be patient.



Alternatively, you can use the Reset button at the Real Panel of the router.

3-4 Wireless Setup

SSID is the name of the wireless router. You may change your SSID to a meaningful name so that you can identify your wireless router from others. You can use any alphanumeric characters, up to 32 characters. Default the SSID

is 'Telempleire_Mofi'.

It's very important to set wireless security settings properly! If you don't, hackers and malicious users can reach your network and valuable data without your consent and this will cause serious security problem.

To secure your wireless network, please click "Security", then click "Security Mode", and follow the following instructions to configure the wireless security settings:

It's recommended to use WPA to protect your wireless router from hackers. Select Enabled WPA-PSK and enter the Pre-Share Key below.

Use 8-32 alphanumeric characters. Please remember this key, you need this



Note: Please refer to the User Manual in our website: www.telempleire.net/router/index.html for more details information on Internet connection type and to configure all others setting.

FCC Notice

This device complies with Part 15 of the FCC Rules. Operation is subject to the following two conditions:

(1) this device may not cause harmful interference, and (2) this device must accept any interference received, including interference that may cause undesired operation.

NOTE 1: This equipment has been tested and found to comply with the limits for a Class B digital device, pursuant to part 15 of the FCC Rules. These limits are designed to provide reasonable protection against harmful interference in a residential installation. This equipment generates, uses and can radiate radio frequency energy and, if not installed and used in accordance with the instructions, may cause harmful interference to radio communications. However, there is no guarantee that interference will not occur in a particular installation. If this equipment does cause harmful interference to radio or television reception, which can be determined by turning the equipment off and on, the user is encouraged to try to correct the interference by one or more of the following measures:

- Reorient or relocate the receiving antenna.
- Increase the separation between the equipment and receiver.
- Connect the equipment into an outlet on a circuit different from that to which the receiver is connected.
- Consult the dealer or an experienced radio/TV technician for help.

Any changes or modifications not expressly approved by the manufacturer could void the user's authority to operate the equipment.

NOTE 2: The manufacturer is not responsible for any radio or TV interference caused by unauthorized modifications to this equipment. Such modifications could void the user's authority to operate the equipment.