

WSP-01 Bluetooth Speaker

User Manual

A. Turn on the speaker

1. Load four AA batteries or plug in 6V transformer (DC 6V).
2. Switch the power from OFF to ON in the back of the speaker.
3. Press and hold the button "MAIN" for 2-3 seconds, the LED blue light would be bright and then flash alternately. The Bluetooth speaker would connect to the device of the last connection automatically.

B. Turn off the speaker

1. Press and hold the button "MAIN" for 5-6 seconds until the LED blue light switches off.

C. Pairing and Connecting

The Bluetooth speaker must be paired with the Bluetooth device when first use otherwise the pairing can't be successfully used. Please refer to the following.

1. Press and hold the button "MAIN" for 5 seconds until the LED red light and blue light alternately flash. It is now searching the Bluetooth device.
2. Choose "My Bluetooth" and "Search the Bluetooth device" from IVT Corporation BlueSoleil- Main Window (see diagram C-1). The Bluetooth device WSP-01 would appear. (see diagram C-2)

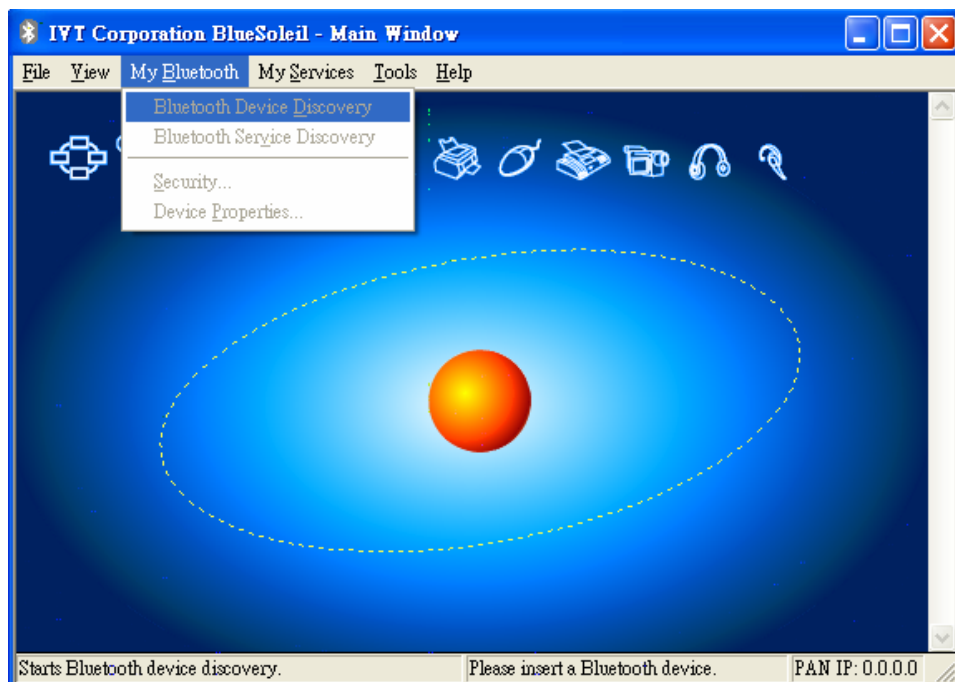


Diagram C-1

WSP-01

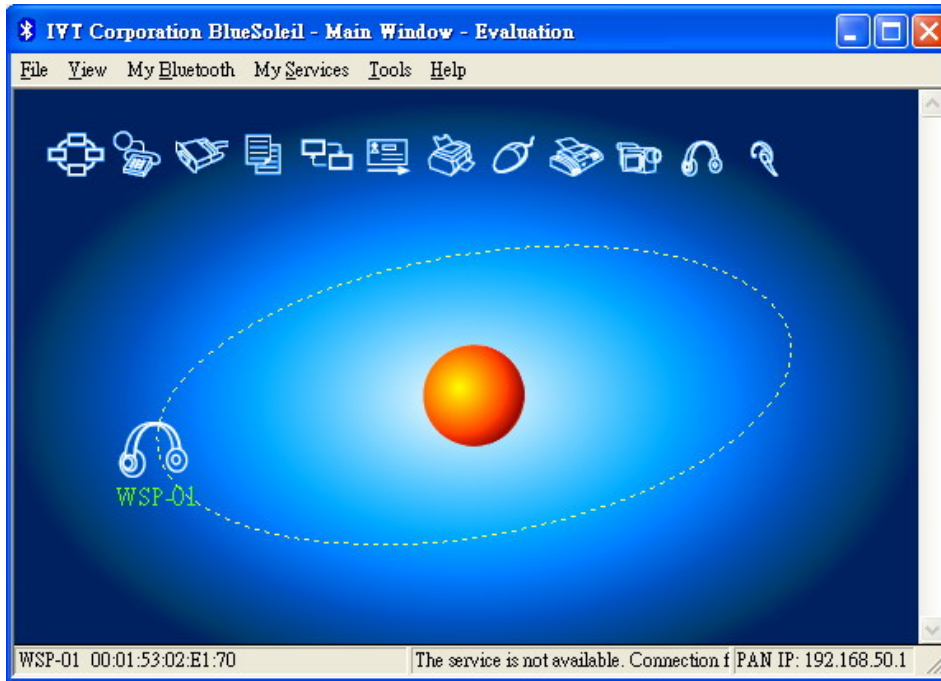


Diagram C-2

Select the Pair device by right click the WSP-01 earphone icon. (See diagram C-3)

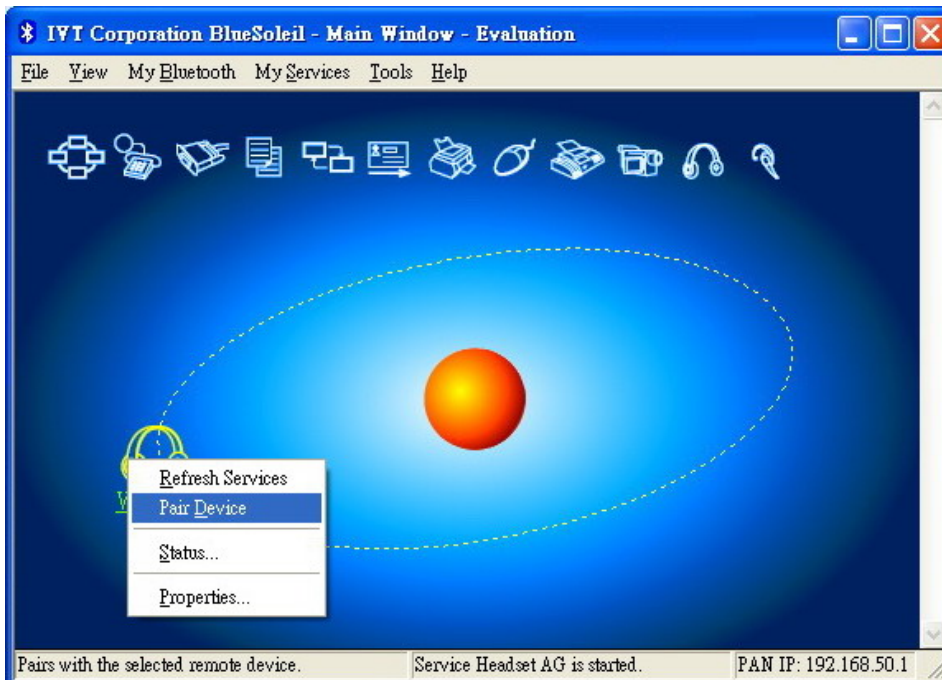


Diagram C-3

Key in Passkey: "0000" and click OK. (see diagram C-4)

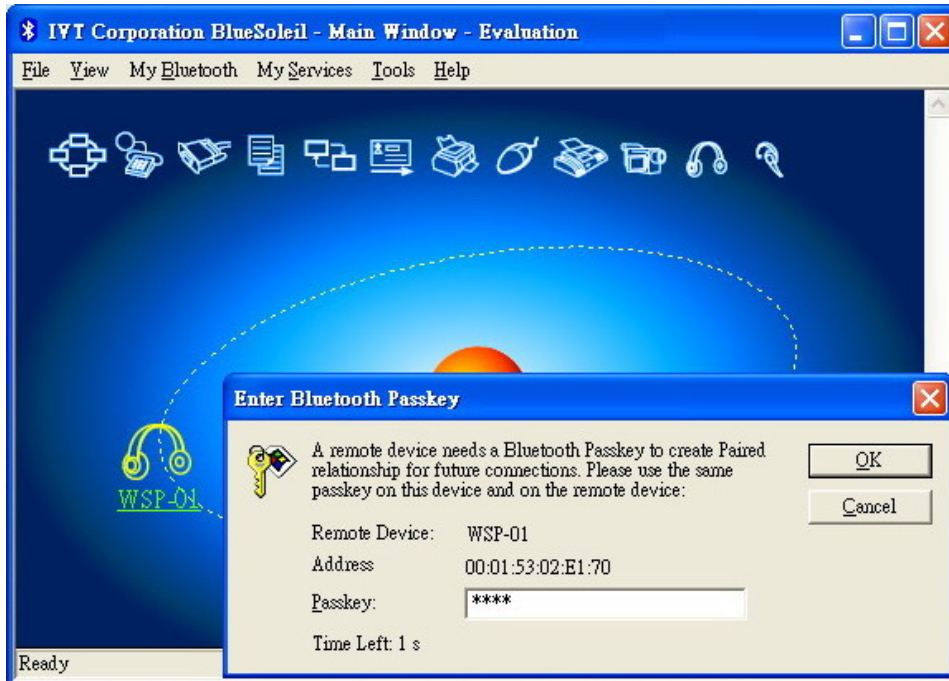


Diagram C-4

Select Bluetooth Advanced Audio Service from Connect in IVT Corporation BlueSoleil- Main Window (see diagram C-5).

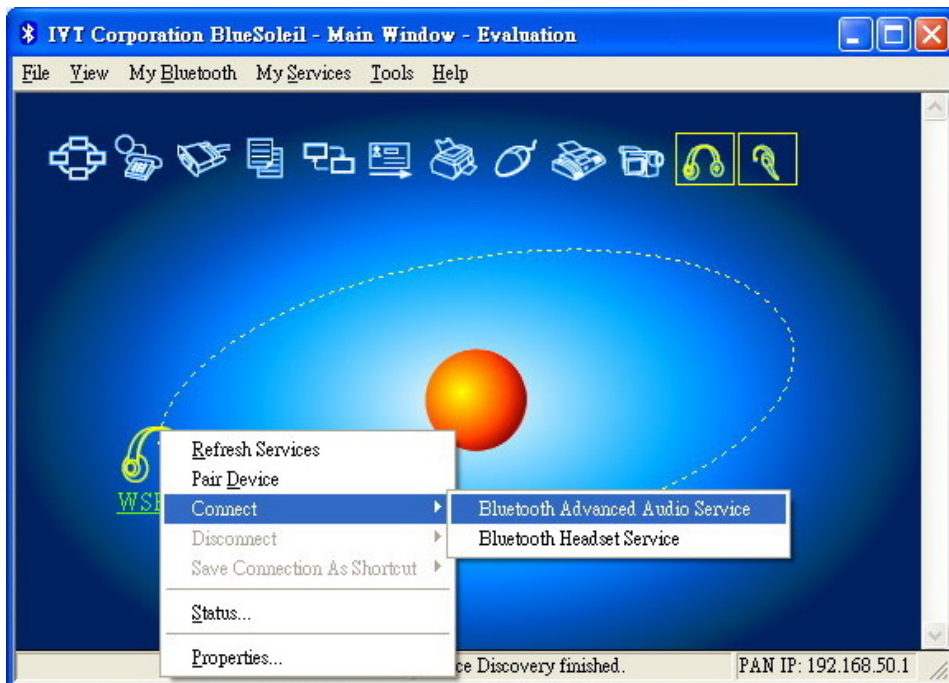


Diagram C-5

The connection is successfully established and the Bluetooth speaker is functioning when the Bluetooth symbol turns to the color of green from blue at toolbar on the lower right corner. (See diagram C-6)

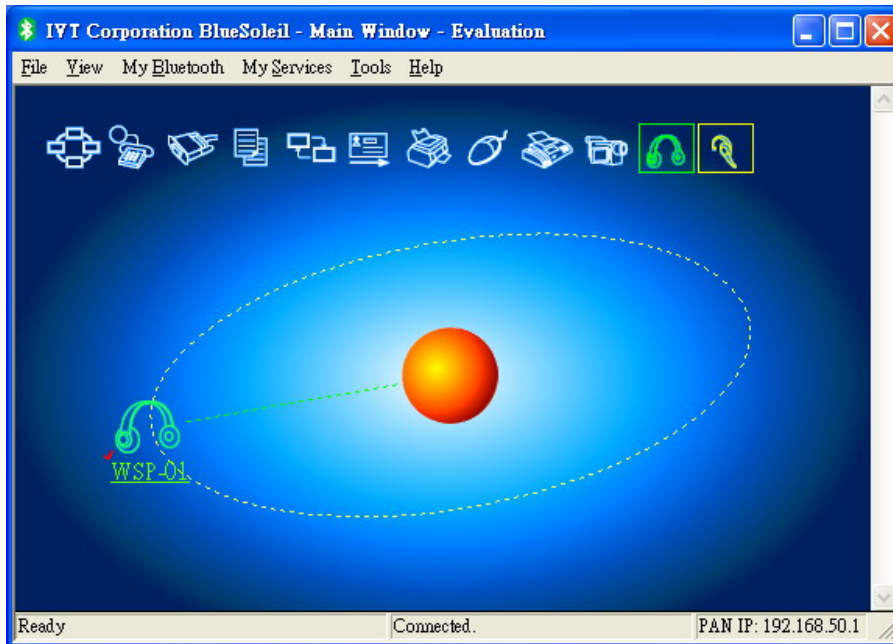
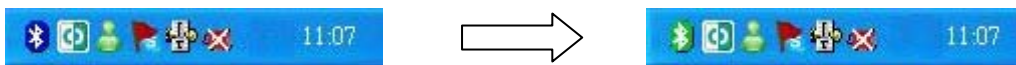
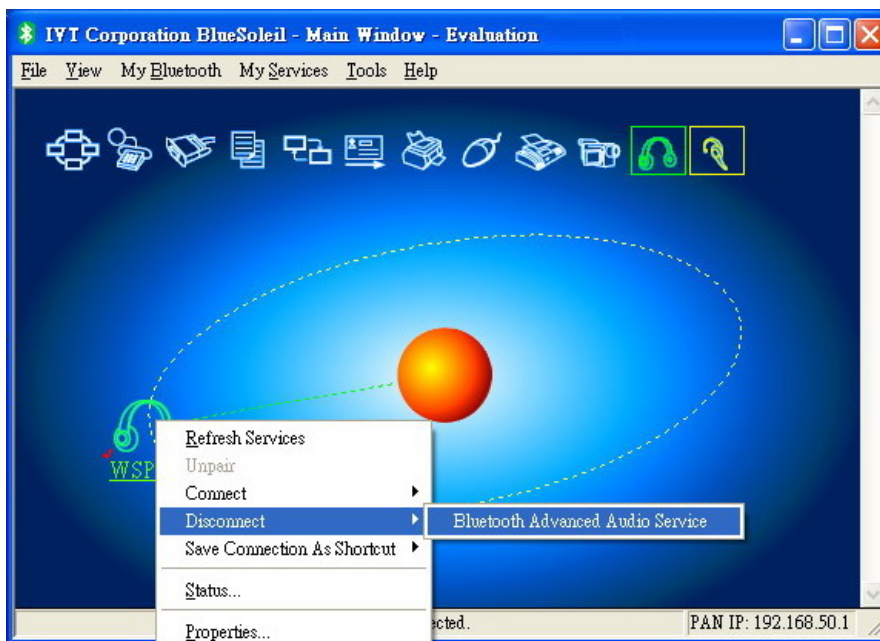


Diagram C-6

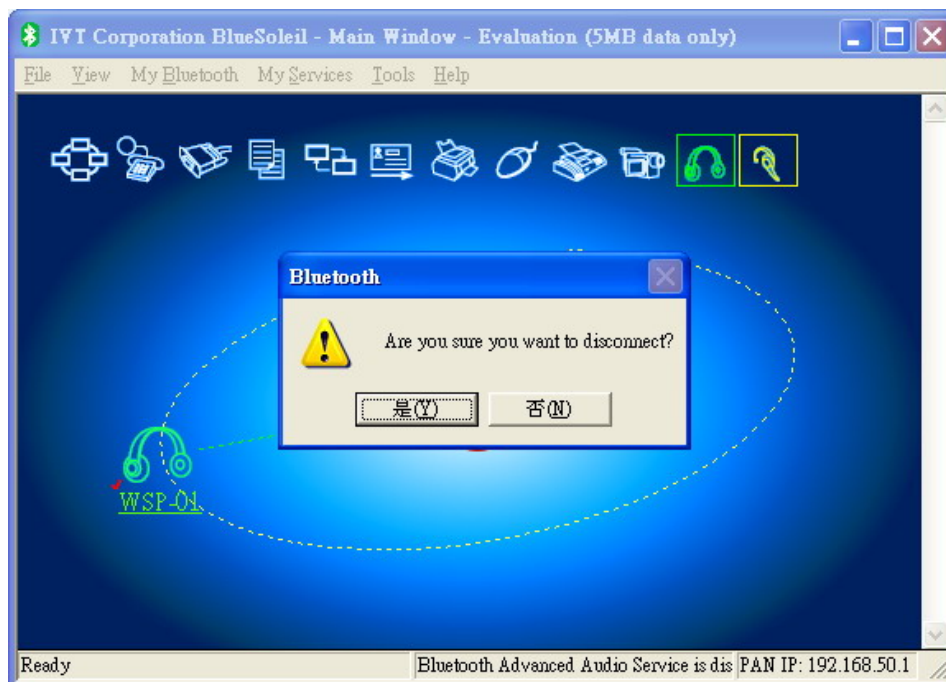


D. Disconnect the Bluetooth device.

Select the Bluetooth Advanced Audio Service from Disconnect (see diagram D-1) to disconnect the audio service.



Select “Yes” to disconnect. (See diagram D-2)



E. Operate from WSP-01.

1. There are three functions: PLAY, PAUSE, STOP on the button “MAIN” when playing the music by Media Player.
2. Adjust the volume by pressing the VOL button up or down when playing
3. the music by Media Player.

Federal Communication Commission Interference Statement

This equipment has been tested and found to comply with the limits for a Class B digital device, pursuant to Part 15 of the FCC Rules. These limits are designed to provide reasonable protection against harmful interference in a residential installation.

This equipment generates, uses and can radiate radio frequency energy and, if not installed and used in accordance with the instructions, may cause harmful interference to radio communications. However, there is no guarantee that interference will not occur in a particular installation. If this equipment does cause harmful interference to radio or television reception, which can be determined by turning the equipment off and on, the user is encouraged to try to correct the interference by one of the following measures:

- . Reorient or relocate the receiving antenna.
- . Increase the separation between the equipment and receiver.
- . Connect the equipment into an outlet on a circuit different from that to which the receiver is connected.
- . Consult the dealer or an experienced radio/TV technician for help.

FCC Caution :To assure continued compliance, any changes or modifications not expressly approved by the party responsible for compliance could void the user's authority to operate this equipment. (Example - use only shielded interface cables when connecting to computer or peripheral devices).

FCC Radiation Exposure Statement

This equipment complies with FCC RF radiation exposure limits set forth for an uncontrolled environment. This equipment should be installed and operated with a minimum distance of 20 centimeters between the radiator and your body.

This device complies with Part 15 of the FCC Rules. Operation is subject to the following two conditions: (1) This device may not cause harmful interference, and (2) This device must accept any interference received, including interference that may cause undesired operation.