

Latitude 13 7000 Series

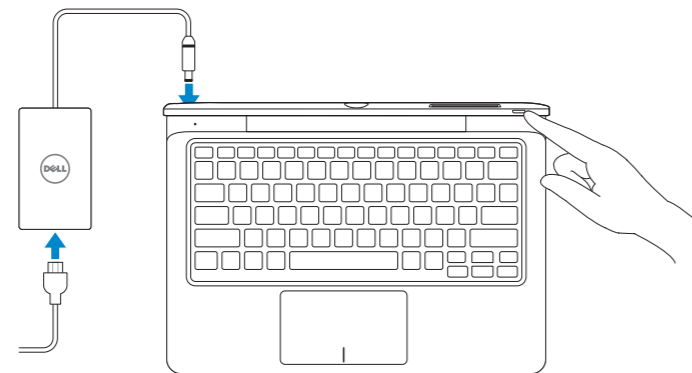
Quick Start Guide

Quick Start Guide
Quick Start Guide
Quick Start Guide
Quick Start Guide

For Proof Only
Dell Confidential

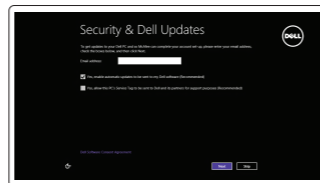
1 Connect the power adapter and turn on your computer

Connect the power adapter and turn on your computer
Connect the power adapter and turn on your computer
Connect the power adapter and turn on your computer
Connect the power adapter and turn on your computer



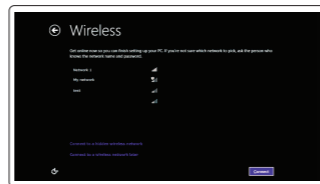
2 Finish Windows setup

Finish Windows setup | Finish Windows setup
Finish Windows setup | Finish Windows setup



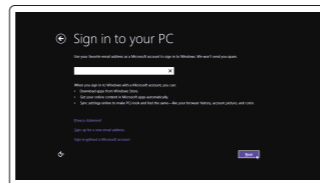
Enable security and updates

Enable security and updates
Enable security and updates
Enable security and updates
Enable security and updates



Connect to your network

Connect to your network
Connect to your network
Connect to your network
Connect to your network



Sign in to your Microsoft account or create a local account

Sign in to your Microsoft account or create a local account
Sign in to your Microsoft account or create a local account
Sign in to your Microsoft account or create a local account
Sign in to your Microsoft account or create a local account

3 Explore resources

Explore resources | Explore resources
Explore resources | Explore resources



Help and Tips

Help and Tips | Help and Tips
Help and Tips | Help and Tips



My Dell

My Dell | My Dell
My Dell | My Dell

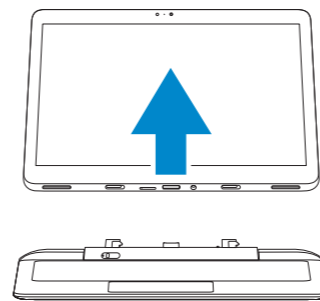
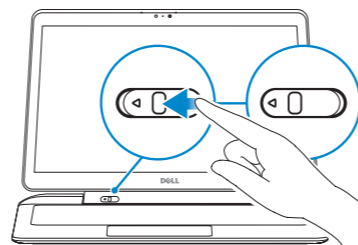


Register your computer

Register your computer | Register your computer
Register your computer | Register your computer

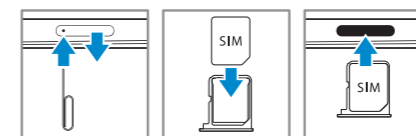
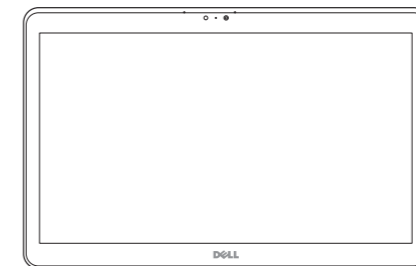
Undock

Undock | Undock
Undock | Undock



Insert micro-SIM card (on LTE/HSPA+ models only)

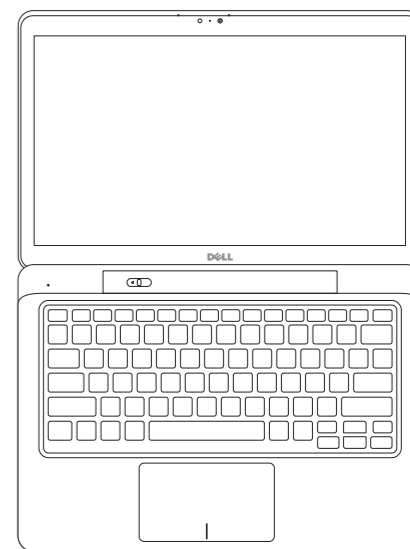
Insert micro-SIM card (on LTE/HSPA+ models only)
Insert micro-SIM card (on LTE/HSPA+ models only)
Insert micro-SIM card (on LTE/HSPA+ models only)
Insert micro-SIM card (on LTE/HSPA+ models only)



NOTE: Undock the computer to access SIM card slot.
NOTE: Undock the computer to access SIM card slot.
NOTE: Undock the computer to access SIM card slot.
NOTE: Undock the computer to access SIM card slot.
NOTE: Undock the computer to access SIM card slot.

Insert optional SD memory card (sold separately)

Insert optional SD memory card (sold separately)
Insert optional SD memory card (sold separately)
Insert optional SD memory card (sold separately)
Insert optional SD memory card (sold separately)



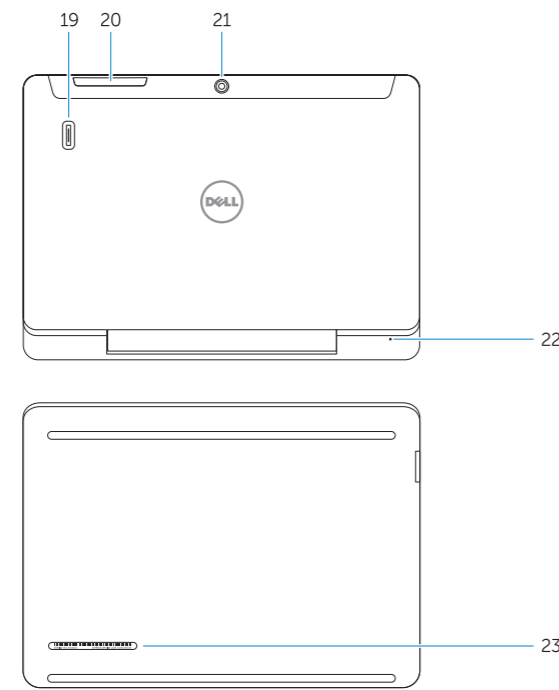
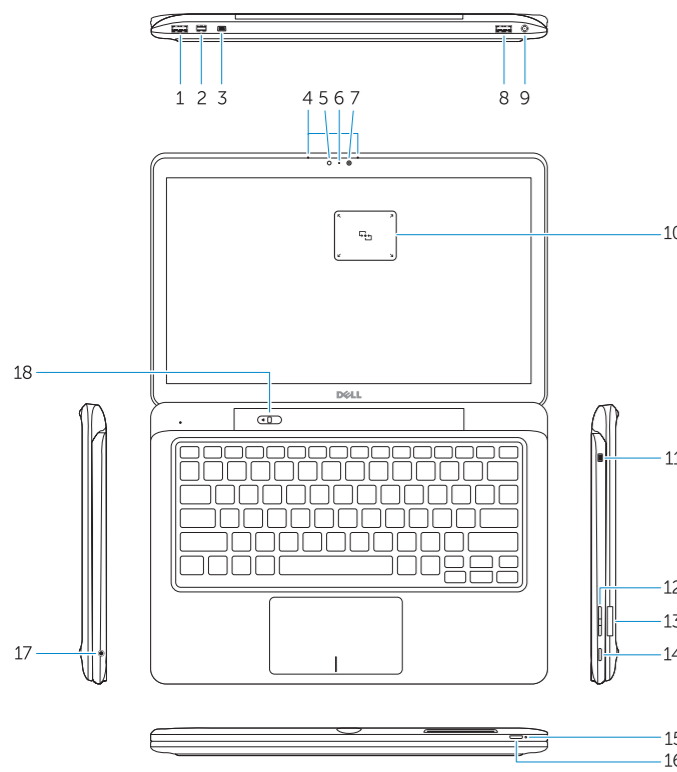
© 2014 Dell Inc.
© 2014 Microsoft Corporation.

For Proof Only
Dell Confidential

Printed in China.
Printed on recycled paper.
2014-06

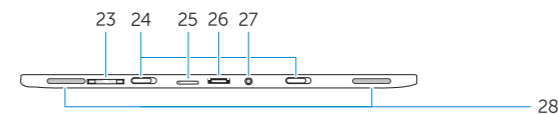
Features

Features | Features | Features | Features



Undocked base view

Undocked base view | Undocked base view
Undocked base view | Undocked base view



1. USB 3.0 connector
2. Mini-DisplayPort connector
3. Noble security-cable slot
4. Microphones
5. Ambient light sensor
6. Camera-status light
7. Camera
8. USB 3.0 connector with PowerShare
9. Power connector
10. Near Field Communication (NFC) reader
11. Noble security-cable slot
12. Volume button
13. Full-sized SD memory card reader
14. Windows button
15. Power-status light

1. Language2
2. Language language language
3. Language
4. Language language
5. Language
6. Language language language
7. Language language
8. Language language language
9. Language language language
10. Language language
11. Language
12. Language language language
13. Language language
14. Language language language
15. Language
16. Language language

16. Power button
17. Headset connector
18. Undock slider
19. Finger print reader
20. Security card reader
21. Rear camera
22. Power-status light
23. Service-tag label
24. Dock guide slots
25. Micro-SIM reader (LTE/HSPA+ models only)
26. Dock connector
27. Power connector
28. Speakers

17. Language language language
18. Language
19. Language language language
20. Language
21. Language language language
22. Language language
23. Language language language
24. Language
25. Language language
26. Language language language
27. Language
28. Language language language

1. Language3
2. Language language language
3. Language
4. Language language
5. Language
6. Language language language
7. Language language
8. Language language language
9. Language language language
10. Language language
11. Language
12. Language language language
13. Language language
14. Language language language
15. Language
16. Language language
17. Language language language

1. Language4
2. Language language language
3. Language
4. Language language
5. Language
6. Language language language
7. Language language
8. Language language language
9. Language language language
10. Language language
11. Language
12. Language language language
13. Language language
14. Language language language
15. Language
16. Language language

18. Language
19. Language language language
20. Language
21. Language language language
22. Language language
23. Language language language
24. Language
25. Language language
26. Language language language
27. Language
28. Language language language

17. Language language language
18. Language
19. Language language language
20. Language
21. Language language language
22. Language language
23. Language language language
24. Language
25. Language language
26. Language language language
27. Language
28. Language language language



Bateria integrada de íon de lítio recarregável:
 Marca: Dell Modelo: X9RG3 / 4H6NV / CDF57 (19.5Vdc, 45Wh)
 Carregador: AA45NM131 / DA45NM131 / LA45NM131
 Este produto está homologado pela Anatel, de acordo com os procedimentos regulamentados pela Resolução nº 242/2000 e atende aos requisitos técnicos aplicados, incluindo os limites de exposição da Taxa de Absorção Específica referente a campos elétricos, magnéticos e eletromagnéticos de radiofrequência, de acordo com as Resoluções nº 303/2002 e 533/2009. Este dispositivo está em conformidade com as diretrizes de exposição à radiofrequência quando posicionado a pelo menos 1,0 centímetro de distância do corpo. Para maiores informações, consulte o site da ANATEL - www.anatel.gov.br.

1. Language5
2. Language language language
3. Language
4. Language language
5. Language
6. Language language language
7. Language language
8. Language language language
9. Language language language
10. Language language
11. Language
12. Language language language
13. Language language
14. Language language language
15. Language
16. Language language
17. Language language language

17. Language language language
18. Language
19. Language language language
20. Language
21. Language language language
22. Language language
23. Language language language
24. Language
25. Language language
26. Language language language
27. Language
28. Language language language

18. Language
19. Language language language
20. Language
21. Language language language
22. Language language
23. Language language language
24. Language
25. Language language
26. Language language language
27. Language
28. Language language language

18. Language
19. Language language language
20. Language
21. Language language language
22. Language language
23. Language language language
24. Language
25. Language language
26. Language language language
27. Language
28. Language language language

Product support and manuals
 Product support and manuals
 Product support and manuals
 Product support and manuals
dell.com/support
dell.com/support/manuals

Contact Dell
 Contact Dell | Contact Dell
 Contact Dell | Contact Dell
dell.com/contactdell

Regulatory and safety
 Regulatory and safety | Regulatory and safety
 Regulatory and safety | Regulatory and safety
dell.com/regulatory_compliance

Regulatory model
 Regulatory model | Regulatory model
 Regulatory model | Regulatory model
P58G

Regulatory type
 Regulatory type | Regulatory type
 Regulatory type | Regulatory type
P58G001

Computer model
 Computer model | Computer model
 Computer model | Computer model
Latitude 13-7350
Latitude 13-7350 series [ZHCN only]

Please keep the device at least 20 cm away from the body. **[translate in KO only]**

Información para NOM, o Norma Oficial Mexicana
 La información que se proporciona a continuación se mostrará en los dispositivos que se describen en este documento, en conformidad con los requisitos de la Norma Oficial Mexicana (NOM):
Importador:
 Dell México S.A. de C.V.
 Paseo de la Reforma 2620 - Piso 11.º
 Col. Lomas Altas
 11950 México, D.F.
 Número de modelo reglamentario: P58G
 Voltaje de entrada: 100 VAC–240 VAC
 Corriente de entrada (máxima): 1,3 A
 Frecuencia de entrada: 50 Hz–60 Hz
 Corriente de salida: 2,31 A
 Voltaje de salida: 19,5 VDC