

Overview

The Librarian Utility breaks down into the following sections:

Action Buttons
Also available through Tools option of main menu.

Music Collection
is where you choose the album, songs, artist, genre, year, radio station, or playlist for which you want to create an icon.

Available Images
is where you choose the image to link as an icon.

Left is a navigator showing the folders.

Image Name lists the image files in the folder.

The Image Preview Pane displays the selected image.

Track	Song	Year	Time	Artist	Genre
2	Bendy	UKN*	???	The Filament Cir...	Unclassifiable/Un...
6	Cutter	UKN*	???	The Filament Cir...	Unclassifiable/Un...
7	Tigers	UKN*	???	The Filament Cir...	Unclassifiable/Un...
7	Virgo	UKN*	???	The Filament Cir...	Unclassifiable/Un...

Image Name	Original Folder
Slow Rocket.jpg	{\WSB129\TERRAPLA
SMOOTH JAZZ.JPG	C:\Program Files\Terr
Songs In the key of wood.jpg	{\WSB129\TERRAPLA
Sons Of The Pioneers - The Essential Collection 2	{\WSB129\TERRAPLA
SOUNDTRACK.JPG	C:\Program Files\Terr
SPORTS.JPG	C:\Program Files\Terr
STANDARDS.JPG	C:\Program Files\Terr
TALK.JPG	C:\Program Files\Terr
TECHNO.JPG	{\WSB129\TERRAPLA
The Filament Circus Sound.jpg	{\WSB129\TERRAPLA
The Holy Ghosts.jpg	{\WSB129\TERRAPLA
The Sound of Orange Shag.jpg	{\WSB129\TERRAPLA
Tommy Dorsey.jpg	{\WSB129\TERRAPLA

Action Buttons

The action buttons on the Librarian Utility are as follows:

- List Years
- List Radio Stations
- List Genres
- List Playlists
- List Artists
- Library Stats
- List Albums
- Search for Artwork
- Link Images
- Exit
- Unlink Images

Sending Changes from the Librarian Utility to the TerraPlayer Radio

When you close the Librarian Utility at the end of a session, it will automatically send any changes made to the TerraPlayer Base, where they are picked up by the TerraPlayer Radio. The changes will not show until they have been picked up by the TerraPlayer Radio.

The Easy Way

Creating an Album Icon from a .jpg File

1. Scan the album cover and create an image file

Using an external image scanner (not included), scan the album or CD cover. The graphic should be saved as a .jpg file using the album title as a filename with the following format:

Album.jpg

For example:



Coffee Break.jpg

The graphic file should be copied into the album folder with the rest of the audio tracks. The album folder should have the same name, for example:

Format



Example

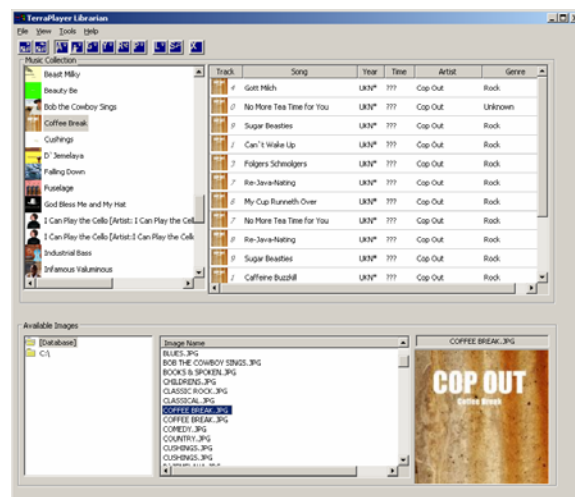


2. Start Librarian

When the program starts, it automatically loads all available files and images.

If an album folder contains a .jpg with the same name, that .jpg will automatically be associated as the icon for all audio files in that album folder.

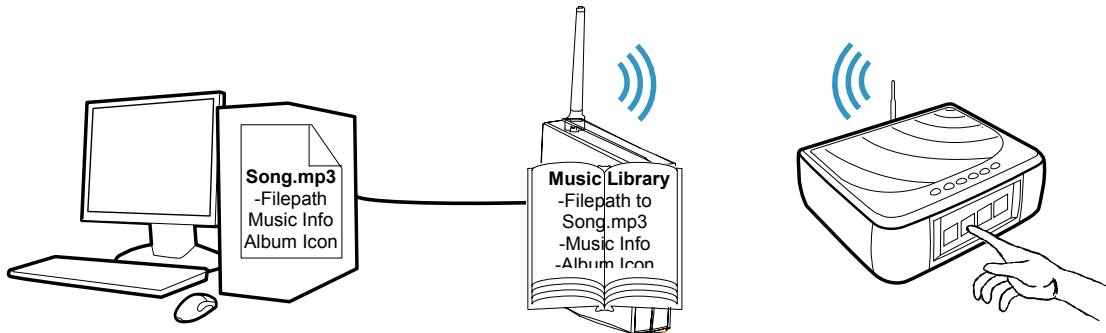
Song collections and associated images can be viewed in the Librarian Utility.



Advanced Librarian Utility

The Music Library

The Music Library contains information about all the audio files on your PC, and on all networked PCs. This database also stores the location of the actual audio files, so the system knows where to go to transmit a track to a TerraPlayer receiver. The database does not store the audio files themselves—just the song information and location.



This database is built and maintained automatically. The Base Transceiver searches the PC(s) for all audio files, then builds the library. The Librarian utility then gets what it needs from the Base Transceiver to build its own music library.



Music Library

Access the Music Library Database from the main menu of the Librarian window by selecting **File ► Library Database**, or by clicking on the **Music Library Stats** button.

The Music Library Database window contains the following:

	Songs	Albums	Artists	Genres	Years	PlayLists	Radios
Count	651	101	84	62	25	0	0
Images	417	49	0	46	0	0	0

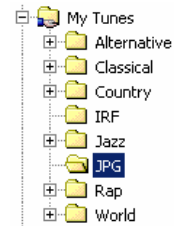
- 1 Default JPG directory.** If you store all of your image files in a single directory, you need to define the filepath for that location here.
- 2 Database Name.** Displays the filepath and name of the physical database.
- 3 Images on File.** Displays the total number of image files in the database.
- 4 Image Database Size.** Displays the total size of the database.
- 5 Error Log Count.** Lists the number of error logs. Click the ? button to view. TerraDigital Support may require these logs in troubleshooting.
- 6 Radio Memory Available.** Lists the amount of database memory available for storing metadata on radio stations.
- 7 Count/Images table.** Lists the number of songs, albums, genres, years, playlists, and radio stations in the database. Lists the number of image files associated with each.

The JPG Directory

When you want to associate a custom graphic with an audio file (or a genre, artist, album, year, or playlist), you will first need to create a folder called 'JPG'. The JPG folder can be located anywhere, but it is easiest to maintain if you keep it in the same folder as your music collection. The JPG folder is where you should store custom graphics.

1. Create a JPG folder

Using the Windows Explorer, create a folder called 'JPG'. You may want to keep it under the main folder of your music collection, for example:



2. Access the Music Library Database



Access the Music Library from the main menu of the Librarian Utility by selecting **File** ► **Library Database**, or by clicking on the **Music Library Stats** button.

3. In the 'Default JPG Directory', enter the name of the JPG folder

If you know the filepath to the JPG, you can manually type it in the **Default JPG Directory** field.

To browse, first click on the **Default JPG Directory** field to activate the field. Then click on the '...' button next to the field to open a browse navigator. Navigate through the hard drive and select the JPG folder.

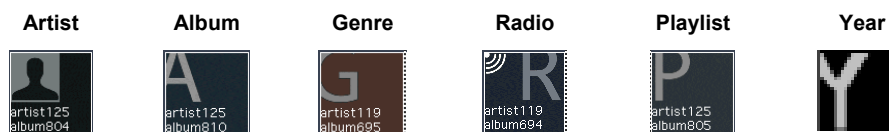
Once done, click **OK**.

4. Close the Music Library Database when finished

After the folder has been assigned as the JPG directory, it will appear in the **Default JPG Directory** field, as shown below. When finished, click **Exit**.

Create a custom icon

You can create icons to represent different categories: artists, albums, radio stations, playlists, or years. Each one of these has a default icon:

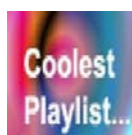


For most albums, the default icon will be replaced by a copy of the real album cover downloaded over the Internet from an online data source when converting a CD with the Ripper Utility, or updating Music Information with the MusicInfo Wizard.

However, album icons, like genre, artist, song, radio, playlist, and year icons, can also be replaced with a custom graphic of your own selection or design.

1. Create a .jpg

The Librarian Utility will automatically scale the graphic for display on the touchscreen before it stores the graphic in the Music Library, but you should try and keep the shape of the graphic roughly square. For example, if you wanted to create a graphic for use as an icon for a playlist, it might look something like this:

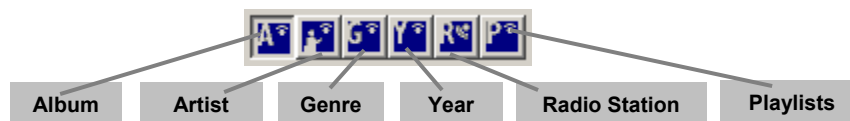


CoolestPlaylist.jpg

You should save the file with a descriptive name, such as 'CoolestPlaylsit.jpg' for our example. The file should be stored in the Default JPG Directory.

2. Select a View and the Level, and select the desired item

Depending on the item with which you'd like to associate an icon, select the corresponding view from the Action buttons:



Or you can select on of these from the **View** option of the main menu.

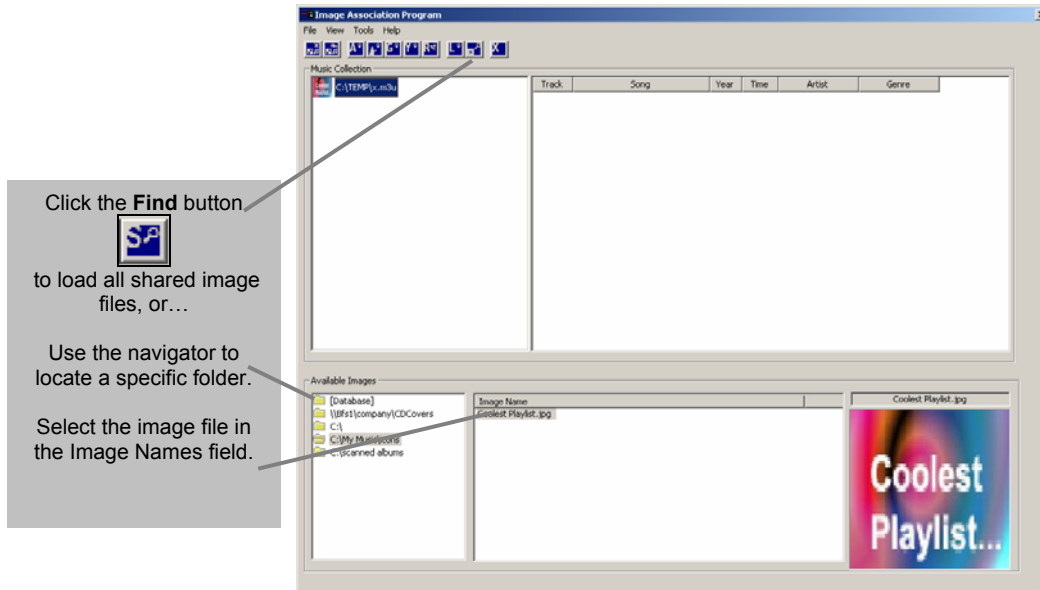
☞ Refer to **View Options** on page 76 for more information.

4. Locate and select the image file

In order to search your entire PC or network for all .jpg image files and load them into the database, click on the **Find** button. Any graphics files the Librarian Utility finds will be added to the Music Library.

To access a specific folder, navigate to that folder using the **Available Images** navigator on the lower right.

A list of image files will appear in the **Image Name** field.



5. Link the image file to the

Once you have selected the image file and the album, artist, genre, or year with which you wish to associate an icon for, click the **Link Artwork** button:



The selected image will be associated as an icon for subsequent display on the TerraPlayer.

Change Icon Associations

If a song or album is already associated with an icon, but you'd like to associate it with another, you can select the album/tracks in the **Music Collection** field, select the new image in the **Available Images** field, then drag and drop.

If you want all the tracks within a given album to be associated with a new icon, select all of the tracks and drag and drop them on the **Image Preview Pane**. If you want to associate individual tracks with unique individual images, you can click on the **Image Preview Pane**, then drag and drop it onto each individual track, or vice versa

View Options

The information in the Librarian Utility can be viewed in different modes according to the types of icons you'd like to create:

Album View



Default. Displays information sorted alphabetically by album title. Can be used to search by album, or to assign image files to albums or songs.

Activate by clicking the Album view button.

Also activated from the main menu by selecting **V**iew ► **A**lbum-Song.

Artist View



Displays information sorted alphabetically by artist name. Can be used to search by artist, or to assign image files to artists, albums, and songs.

Activate by clicking the Artist view button.

Also activated from the main menu by selecting **V**iew ► **A**rtist-Album-Song.

Genre View



Displays information sorted alphabetically by genre. Can be used to search by genre, or to assign image files to genres, artists, albums, and songs.

Activate by clicking the Genre view button.

Also activated from the main menu by selecting **V**iew ► **G**enre-Album-Song.

Year View



Displays information sorted numerically by release year of album. Can be used to assign image files as icons for specific years. Activate by clicking the Year view button.

Also activated from the main menu by selecting **V**iew ► **Y**ear-Album-Song.

Radio View



Displays all radio stations that have been configured. Can be used to assign image files as icons for specific radio stations.

Also accessed from the main menu by selecting **V**iew ► **R**adio Stations.

Playlist View



Displays all playlist files. Can be used to assign image files as icons for playlists.

Also accessed from the main menu by selecting **V**iew ► **P**laylists.

No Art Filter

You can switch the display of image files in the Librarian Utility on and off. Select the following from the main menu: **V**iew ► **N**o Art Filter.

Refresh Current View

You can refresh the current view in the window by making the following selections from the main menu: **V**iew ► **R**efresh Current View.

Adding Images

There are several ways of adding new image files to the **Available Images** field.

Add Available Images

Selecting **Tools ► Add to Available Images** from the main menu will bring up a navigator allowing you to add any specific folder to **Available Images**.

Auto-Find Images



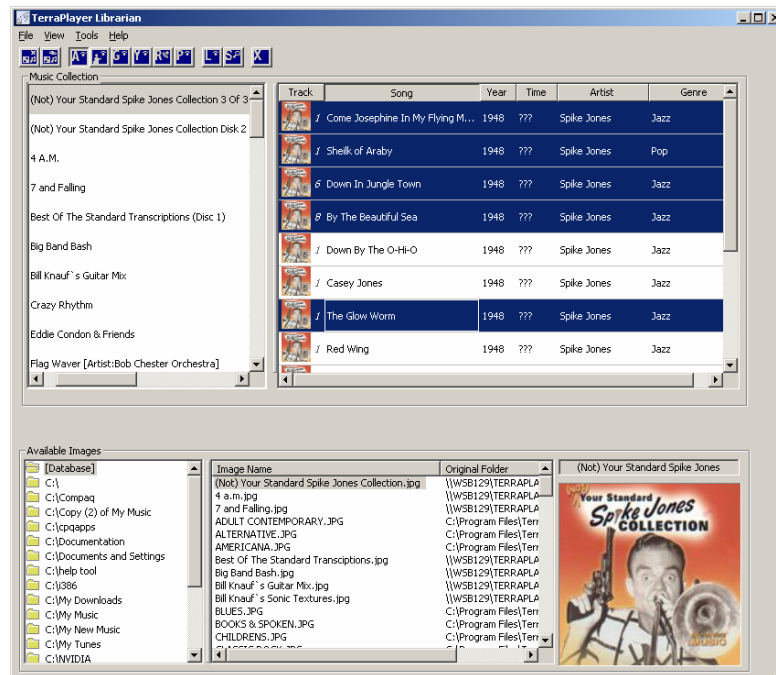
Find Artwork

Perform a search for all image files in file shared folders by clicking the **Find Artwork** button, or by selecting **Tools ► Auto-Find Images** from the main menu. Either will add all image files found in file shared folders to the **Available Images** field.

Update Music Information for Selected Songs

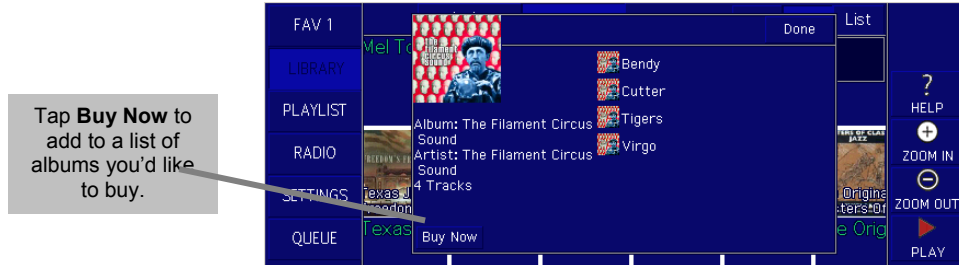
You can also edit Music Information directly in the Music Library Database using the Librarian Utility. For example, you can select an album or several tracks from an album, then select **Tools ► Update Music Information for Selected Songs** from the main menu, and the Librarian Utility will search an online data source to download any available information over the Internet.

This affects only the Music Information in the Music Library Database. In order to work with Music Information stored with the audio files, you must use the MusicInfo Utility.

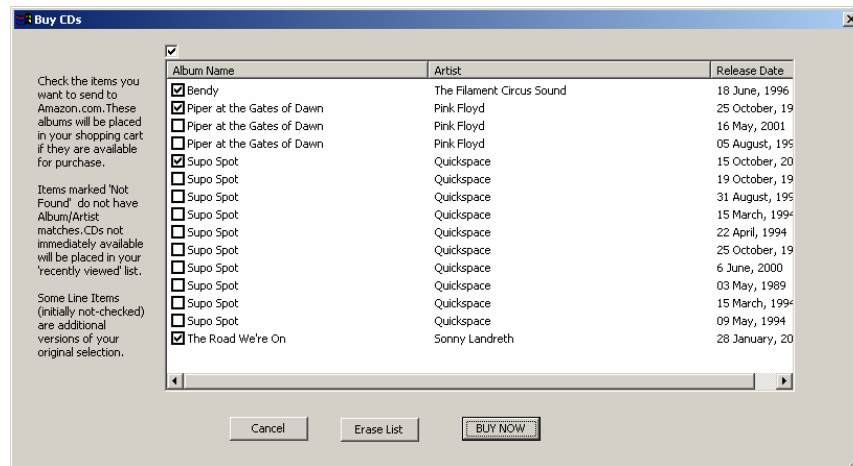


Buy CDs Now

At the TerraPlayer touchscreen, you can indicate if you would like to buy a CD by pressing the **Buy Now** button on the Music Information screen for that album. When you press Buy Now, the TerraPlayer will keep track of that album in a list of CDs you would like to purchase.



To view these albums, select **Actions ► Buy CDs Now** from the main menu of the Librarian Utility. The Librarian utility will query the Amazon website for any releases of this album that it might have for sale.



You can select a release by date by clicking on the checkbox beside the Album name. If you still want to buy the album, click the **BUY NOW** button. When you click **BUY NOW**, this item will be added to your Amazon shopping cart, and you can then close the transaction to place the order next time you visit Amazon.

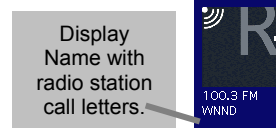
Setting Up AM/FM Radio Station Display Names with Local Call Letters (TR-100 only)

The Display Name of a radio station is the text that is displayed in the TerraTouch OS. You can set up the Display Names with call letters (for example: WKRP, WJNK) for AM/FM radio stations (BT-100 only) for a given geographic location. When you do this, radio station icons in the TerraPlayer will list the call letters as well as the frequency for each radio station.

Before (no call letters)



After (with call letters)



Access AM/FM Radio Maintenance

To access the AM/FM Radio Maintenance window, select the following from the main menu of the Librarian Utility:

File ► AM/FM Radio Maintenance

Assigning radio station call letters

Assign radio station call letters to the frequencies as follows:

1

Access AM/FM Radio Stations

The TerraPlayer automatically detects the frequencies you receive and lists them here.

Call	Freq	Band	Display Name	Format	Freq	Call Ltrs	City	State
WCRW	1240 kHz	AM	WCRW	NA	100.3 MHz	WAOQ	BRANTLEY	AL
WYLL	1160 kHz	AM	WYLL-Music to Kill	Jazz	100.3 MHz	WLA...	TUSCUMBIA	AL
WMBI	1110 kHz	AM	WMBI Some mJsic	NA	101.1 MHz	WVD...	CULMAN	AL
WFRV	99.7 MHz	FM	WFRV - Classical	NA	101.1 MHz	WZTZ	ELBA	AL
WDRV	97.1 MHz	FM	WDRV Jazz	NA	101.1 MHz	WFNU	REPTON	AL
WVND	100.3 MHz	FM	WVND	NA	1110 kHz	WBCA	BAY MINETTE	AL
WKQX	101.1 MHz	FM	WKQX	NA	1110 kHz	WISB	CENTREVILLE	AL
WUSN	99.5 MHz	FM	WUSN	NA	1240 kHz	WEB3	BREWTON	AL
					1240 kHz	WULA	ELFAULA	AL
					1240 kHz	WBCF	FLORENCE	AL
					1240 kHz	WABC	ANDREWS	AL

Display Stations by State

Alabama ▼ Find Stations

Add State Undo Changes

New State

Exit

3

Select stations

After Find Stations for your state, the radio station call letters will appear here.

1. Access AM/FM Radio Stations

From the main menu of the Librarian Utility, select the following: **File ► AM/FM Radio Maintenance**. The Librarian Utility will then query the TerraPlayer radio, via the associated Base Transceiver, and will list the frequencies that have been auto-detected by the TerraPlayer Radio. The first time you access the list of auto-detected frequencies, the call letters for those frequencies will not appear – we will assign those next.

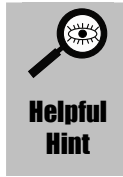
2. Search for the call letters of your state

In the **Display Stations by State** fields, select the state in which you live from the pop-up menu, then click the **Find Station** button. This will bring up a list of the radio stations in your state.

Note: If you select another state it will call up the stations for that state, and the call letters will not correspond to the stations in your area.

3. Select stations

Choose the call letters for your area by double-clicking on each. As you do, the station information will appear in the list on the left, and will be stored in the Music Library Database, from where the TerraPlayer Radio will retrieve the information.



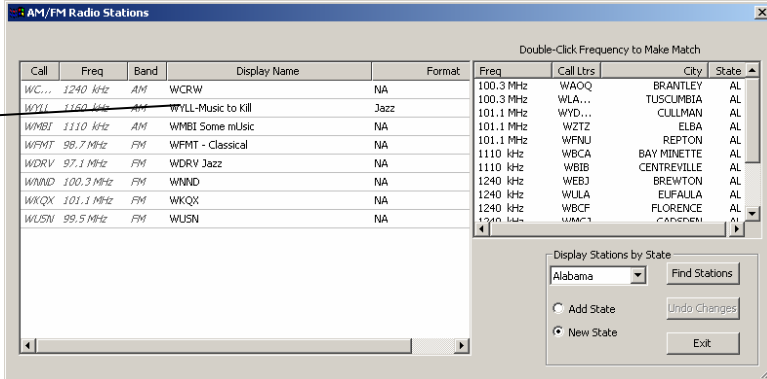
Overlapping radio stations in some places may have different call letters for the same frequency. If you are in a location where radio station frequencies overlap, please make sure that you have the correct call letters for the radio station in your area.

Manually editing Display Name or Format

You also have the option of manually editing the Display Name or format information for an AM/FM radio station. This feature will be useful if you live in an area on the border of two broadcast zones, and a radio station from another geographic location overrides one on the same frequency in your own location.

If you notice that one radio station overrides the broadcast of another, you can change the call letters by double-clicking on the field for that frequency in the Display Name column, and manually typing in the new call letters. Or, you can type anything else you'd like in the field, and the text will be displayed in the TerraTouch OS once those changes have been transmitted to the TerraPlayer Radio.

Double-click on a field in the Display Name or Format columns to manually edit the text.



Call	Freq	Band	Display Name	Format	Freq	Call Ltrs	City	State
WCRW	1240 kHz	AM	WCRW	NA	100.3 MHz	WACQ	BRANTLEY	AL
WYLL	1150 kHz	AM	WYLL-Music to Kill	Jazz	100.3 MHz	WLA...	TUSCUMBIA	AL
WMBI	1110 kHz	AM	WMBI-Some mUsic	NA	101.1 MHz	WYD...	CULLMAN	AL
WFMJ	98.7 MHz	FM	WFMJ - Classical	NA	101.1 MHz	WZTZ	ELBA	AL
WDRV	97.1 MHz	FM	WDRV Jazz	NA	101.1 MHz	WFNU	REPTON	AL
WVND	100.3 MHz	FM	WVND	NA	1110 kHz	WBCA	BAY MINETTE	AL
WKQX	101.1 MHz	FM	WKQX	NA	1110 kHz	WBIB	CENTREVILLE	AL
WUSN	99.5 MHz	FM	WUSN	NA	1240 kHz	WEBJ	BREWTON	AL
					1240 kHz	WUJA	ELIJAH	AL
					1240 kHz	WBCF	FLORENCE	AL
					1240 kHz	WMA...	CANON...	AL

Double-Click Frequency to Make Match

Display Stations by State

Alabama Find Stations

Add State Undo Changes

New State Exit

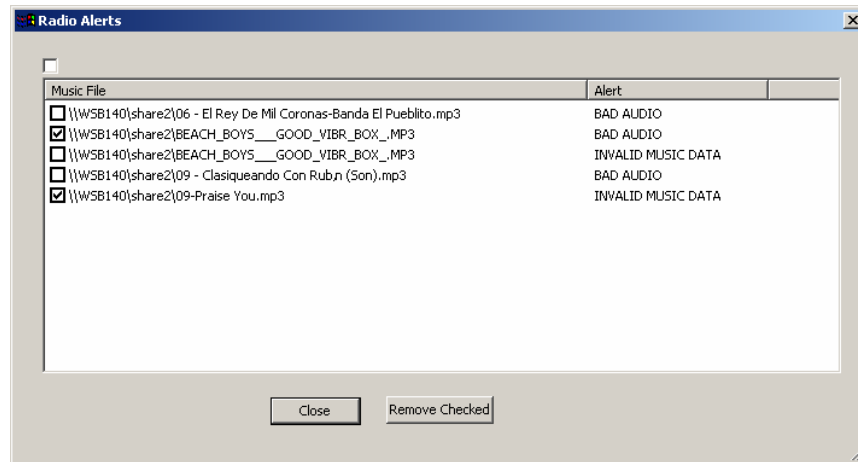
Radio Alerts from the TerraPlayer Remote Control

If you have indicated that an audio file is broken or the Music Information is corrupt, you can find those audio files listed in the Radio Alerts window of the Librarian Utility. From here, you can look at which audio files are listed, and decide which ones you want to fix.



1. Access Alerts from Radio

From the main menu, select the following: **File ► Check Alerts from Radio**.

The Librarian Utility will check with the Base Transceiver to see which have been listed. This will bring up the **Radio Alerts** window, which shows the name and filepath of each flagged file in the **Music File** column, and the message in the **Alert** column:



The messages in the list correspond to the buttons on the TerraPlayer Remote as follows:

Button	Action	Radio Alerts Message
BROKEN 	BROKEN. Flags a track on the PC if the audio file is broken.	BAD AUDIO
FLAG 	FLAG. Flags a track if the Music Information is corrupt.	INVALID MUSIC DATA

2. Replace broken audio files

Files marked 'BAD AUDIO'. If a file was converted from your CD collection, you can use TerraPlayer Ripper to reconvert the audio file from the original audio CD.

☞ *For information on converting audio CDs into digital audio files, refer to **Chapter 7: The Ripper Utility** on page 84 .*

Files marked 'INVALID MUSIC DATA'. You can use the Music Info Utility to fix Music Information.

☞ *For information on editing Music Information, refer to **Chapter 9: The MusicInfo** on page 98 .*

3. Select fixed audio files and click the Remove Checked button

To the left of each listing in the **Music File** column, click the checkbox of each file you have replaced or repaired, then click **Remove Checked**. This will remove audio files from the list.

Chapter 7:

The Ripper Utility

You already have a vast collection of CDs that you would like to play through the TerraPlayer? No problem—the Ripper Utility can convert, or ‘rip’, audio CDs into audio files. And there are a range of options available to accommodate both novice users and power users.

Internet Connection and the Ripper Utility

It is recommended that you log in and maintain a live Internet connection during a session with the Ripper Utility, so it can download Music Information from a data source on the web.

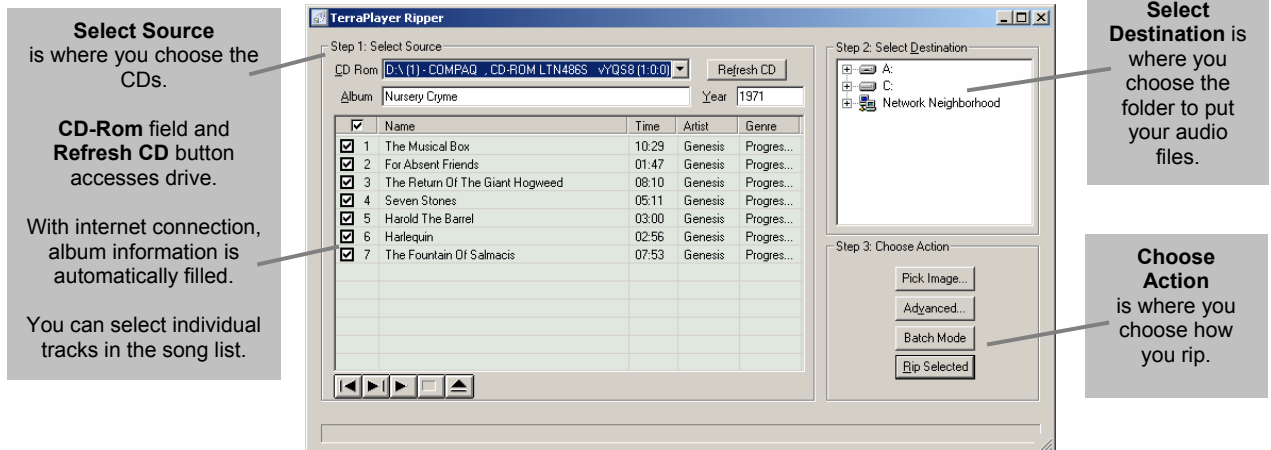
Accessing the Ripper Utility



The Ripper Utility can be accessed by clicking on the **Ripper** button of the TerraLaunch window.

Overview

The Ripper Utility breaks down into the following sections:



Select Source is where you choose the CDs.

CD-Rom field and Refresh CD button accesses drive.

With internet connection, album information is automatically filled.

You can select individual tracks in the song list.

Select Destination is where you choose the folder to put your audio files.

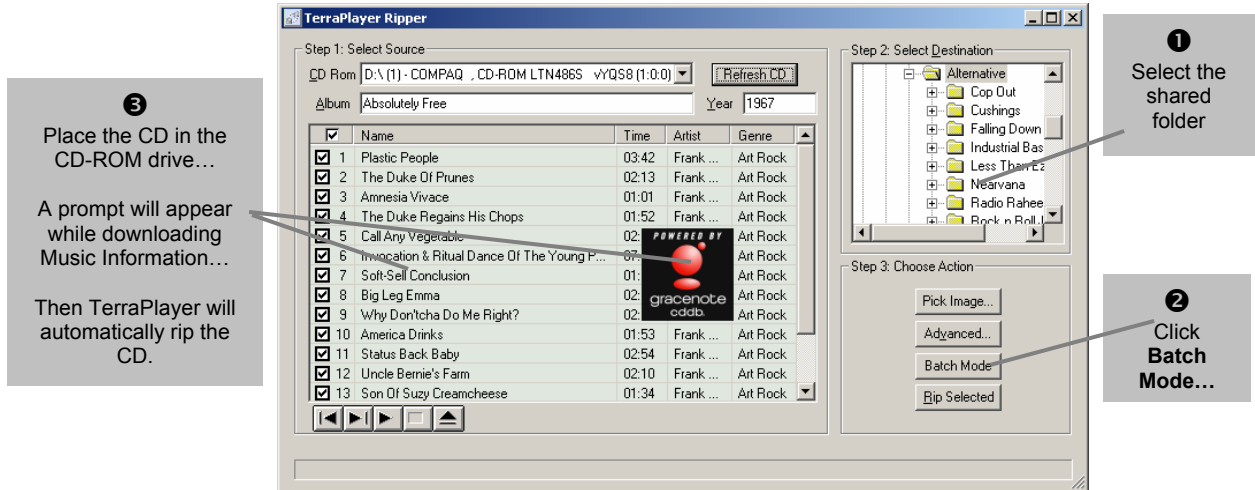
Choose Action is where you choose how you rip.

	Name	Time	Artist	Genre
<input checked="" type="checkbox"/>	1 The Musical Box	10:29	Genesis	Progres...
<input checked="" type="checkbox"/>	2 For Absent Friends	01:47	Genesis	Progres...
<input checked="" type="checkbox"/>	3 The Return Of The Giant Hogweed	08:10	Genesis	Progres...
<input checked="" type="checkbox"/>	4 Seven Stones	05:11	Genesis	Progres...
<input checked="" type="checkbox"/>	5 Harold The Barrel	03:00	Genesis	Progres...
<input checked="" type="checkbox"/>	6 Hatlequin	02:56	Genesis	Progres...
<input checked="" type="checkbox"/>	7 The Fountain Of Salmacis	07:53	Genesis	Progres...

The Easy Way

Ripping a Collection of Audio CDs in Batch Mode

For the novice user, or for anyone wanting to convert a large number of audio CDs at one time, there is Batch Mode. In Batch Mode, the Ripper Utility reads the CD, automatically downloads Music Information from an online data source over the Internet, and creates digital audio files. Then, it spits out the CD when done and asks you for another one. You can check in on the computer once in awhile to throw in a new CD, then go around doing other things.



1. Select the music folder

In the **Select Destination** field, select the shared folder for your audio collection. This is where the converted files will be stored.

2. Select Batch Mode

Click on the **Batch Mode** button. The Ripper Utility will prompt you to place a CD in the drive.

3. Place the CD in the CD-ROM drive

Insert the audio CD in the CD-ROM drive. If you are logged on to the Internet, the Ripper Utility will automatically fill out Music Information. The “Powered by Gracenote” prompt will appear while this is happening.

As each track is ripped, a progress bar will appear over the song title. By default, the converted tracks will be saved in a filepath along the following format:

... \Artist Name\Album Title

For example:



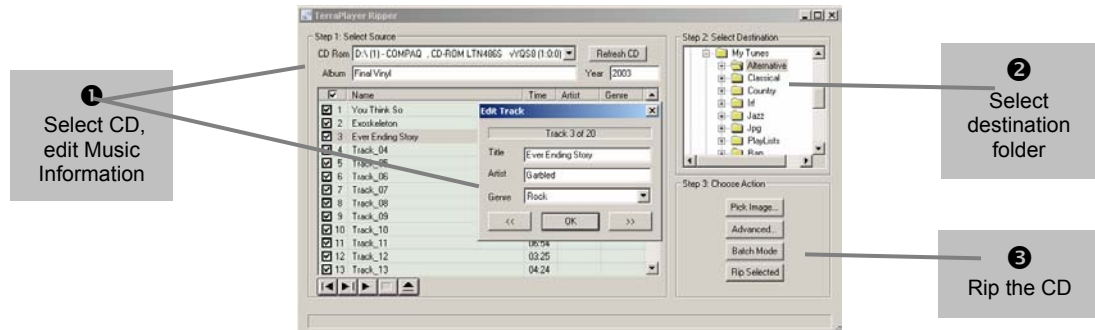
Once it's done, the Ripper Utility will prompt you for another CD—it makes it easy to convert your entire collection.

Advanced Ripper Utility

For the power user, there are Advanced Options. Advanced options include: manual Music Information editing, read/write buffer options, jitter correction, encoder options, and proxy server parameters if you are running on a network with an Internet connection through a proxy server.

Ripping a CD – Entering Music Information Manually

Sometimes, the Music Information for an album or track might not be available from the online data source. This may be the case for very new or very rare albums, and you may need to enter the Music Information manually.



1. Select the CD and enter information

Insert the audio CD to be ripped into the CD-ROM drive, then select the drive in the **CD Rom** field. If the album is not in the online data source, you will be prompted to decide if you want to submit the information yourself. If you want the Music Information you enter for the CD to be uploaded to the online data source, click **Yes**. If not, click **No**.

Type the name of the album in the **Album** field. Enter the year the album was release in the **Year** field. Select or deselect the tracks you wish to convert by clicking the checkboxes by each track.

You can add the name, artist, and genre by double-clicking on a track to open the **Edit Track** window. Use the << and >> buttons to scroll through each track.

If you want to convert only a single track, deselect the check boxes next to the other tracks. To listen to a track before ripping it, highlight the track then click the ► button at the bottom of the track list.

2. Select the folder where the converted files will go

In the **Step 2: Select Destination** area, use the cursor and/or scroll bars to locate and highlight the shared folder for storing the ripped audio files. If you want to store them in a new folder, you can create one by clicking the **Advanced...** button in the **Step 3: Choose Action** area.

3. Rip the CD

In the **Step 3: Choose Action** area, click the **Rip Selected** button. The Ripper Utility will begin converting the songs on the CD into the default MP3 format, and a progress bar will appear next to each selection to indicate the status of each file as it is being ripped. It's that easy. There are other options available, as well:

- ☞ **Pick Image...** Refer to **Pick Image...** on page 87 for information.
- ☞ **Advanced...** Refer to **Advanced Ripper Options** on page 87 for information.

Pick Image...

Pick Image allows you to manually associate an image file with a ripped D. The image is then available for display as an icon on the TerraPlayer Radio touchscreen.

When you click the **Pick Image...** button a **Select** window will appear, and you can navigate to the folder containing the image file (.jpg format) that will be then be associated with the album.

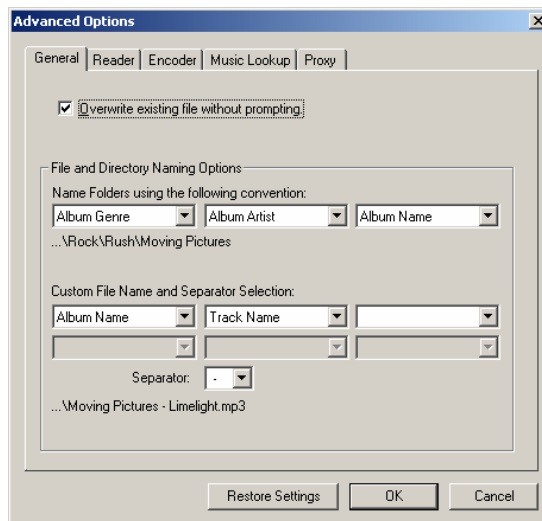
Advanced Ripper Options

Using Advanced Options, you can fully customize and control a variety of ripping parameters to suit your needs. A detailed description of each of the advanced options is covered in the rest of this section.

Click on the **Advanced...** button, and the Advanced Options window appears.

General Options

The 'Ripper Options' screen opens up on the 'General' tab. The options below are available on this tab.



Overwrite existing file without prompting

If this option is selected and there is a file with the same filepath and filename, then the Ripper Utility will overwrite that existing file without prompting for permission.

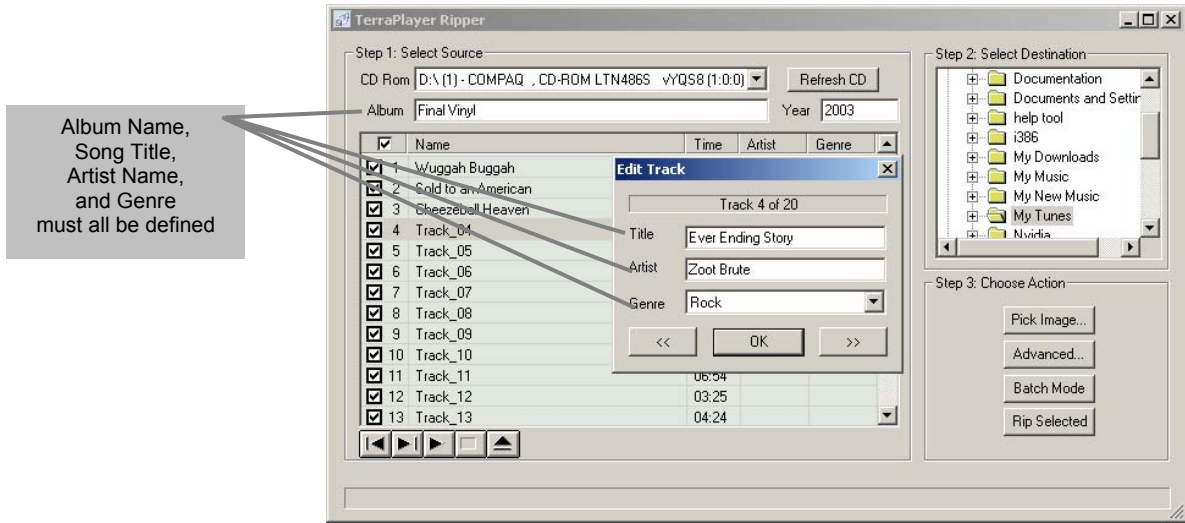
Default: On.

File and Directory Naming Options

There are fields for defining the filename convention files will be written under, and the filepath where they will be written.

First, you need to define the folders where the ripped files will be stored. You can define a path up to three folders deep. The folder structure you choose may define how you wish to store your audio files.

In order for this option to work, each folder level must also have a corresponding name in the conversion options. For example, if you select *... \Track Genre\Album Artist\Album Name\Track Name* as the directory structure, you will need to define each of those when you select your source, as shown here:



If none of these have been defined, the folders will not be created. Or if one of them has been left out, it will create a folder at that level, but the folder will be unnamed.

The default folder naming convention is:

... \Album Artist\Album Name

For example:

... \Zoot Brute\Final Vinyl

But if you wanted to redefine the path to add a genre folder, you would select 'Album Genre' in the first field, then move 'Album Artist' and 'Album Name' into the fields to the right. So the following selections:



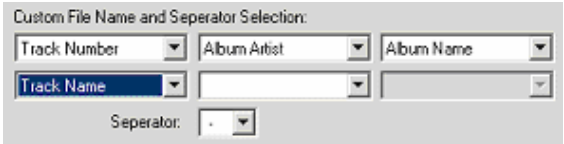
Would result in a path like the following example:

... \Rock\Zoot Brute\Final Vinyl

You also need to define the naming convention used for the audio files. The filename can be defined by up to six elements, broken up by a separator. By default, the ripper defines a filename using two elements and a separator: Track Number and Track Name are the elements, and a hyphen is the separator. For example:

... \01 – Ever Ending Story.mp3

Say you want to include the Artist Name and Album Name in the filename. You would select those options in the respective fields of the 'Custom File Name and Separator Selection' fields. So the following selections:

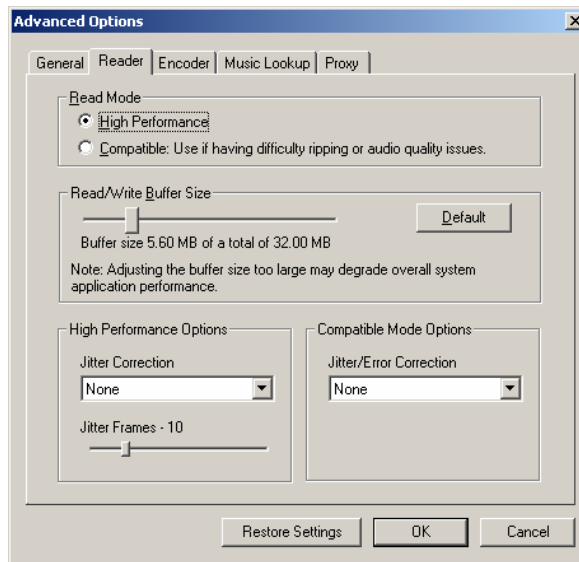


would name the file along the lines of the following example:

... \01 – Zoot Brute – Final Vinyl – Ever Ending Story.mp3

Reader Options

When you select the 'Reader' tab, you can change the performance parameters of the CD reader while it is reading the audio CD for converting files. The options below are available.



Read Mode

The quality the CD will read with is defined by the Read Mode.

- **High Performance.** This mode reads at the fastest speed possible. This mode works only with systems that have Adaptec ASPI drivers installed, and will not appear as an option in systems without them. ASPI can be downloaded from the Adaptec website (www.adaptec.com).
- **Compatible.** Compatible will use the CD-ROM driver native to your system.

Read/Write Buffer Size

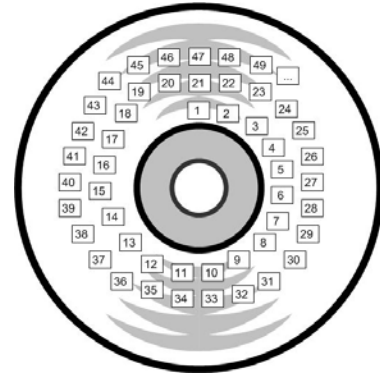
You can redefine the size of the buffer to adjust the Ripper Utility's performance.

Move the slider to the right to increase the buffer, or to the left to decrease. Click on the **Default** button to reset the buffer size.

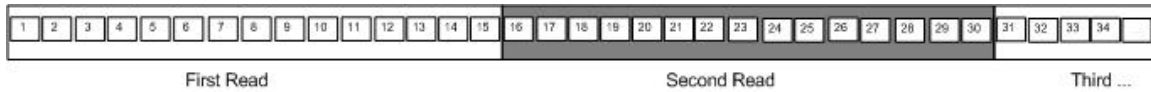
High Performance Options – Jitter Correction

Jitter occurs when a CD-ROM drive cannot find a specific frame, or sector, while it is reading. This results in pops or breaks in the audio. Jitter correction is a way of improving audio through overlapping or multiple reading of the same frames to help ensure a high-quality conversion.

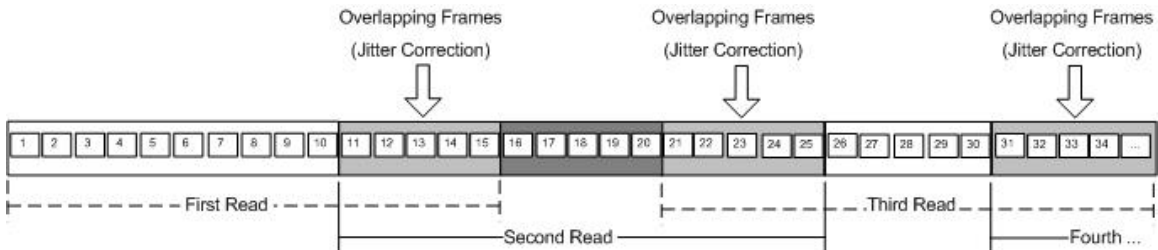
On an audio CD, the tracks are written and read in spirals, much like on vinyl. Unlike vinyl, these spirals are not one single, continuous groove – they are individual frames (sectors) in sequential order. Each successive frame is marked with a time-code to maintain a sort of ‘continuous groove’. They are read in blocks.



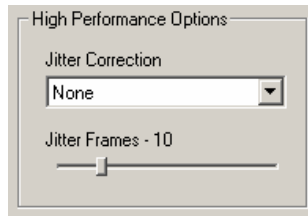
For example, a drive set to read blocks of 15 frames from the CD above would read them in the order below:



Since each frame is read only once, a lagging processor may lose data and jitter errors may occur. Jitter correction adds overlapping frames within each read block, ensuring a continuous data stream. For example, a correction of 5 frames would tell the drive to read in the following order:



Overlapping frames help maintain the ‘continuous groove’ as the CD drive and computer exchange audio data. Jitter correction can be activated or deactivated in the Ripper Utility by setting High Performance Options:



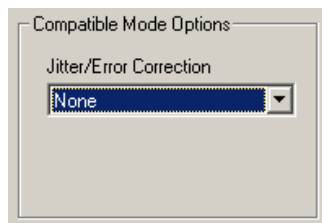
Jitter Correction... tells the drive when to use correction:

- **None.** No jitter correction.
- **Always.** Always use jitter correction
- **On Error.** Only use jitter correction when errors occur.

Jitter Frames... sets the number of overlapping frames.

Compatible Mode Options – Jitter Correction

Jitter/Error Correction activates/deactivates jitter correction or sets specific modes.



None... disables jitter correction.

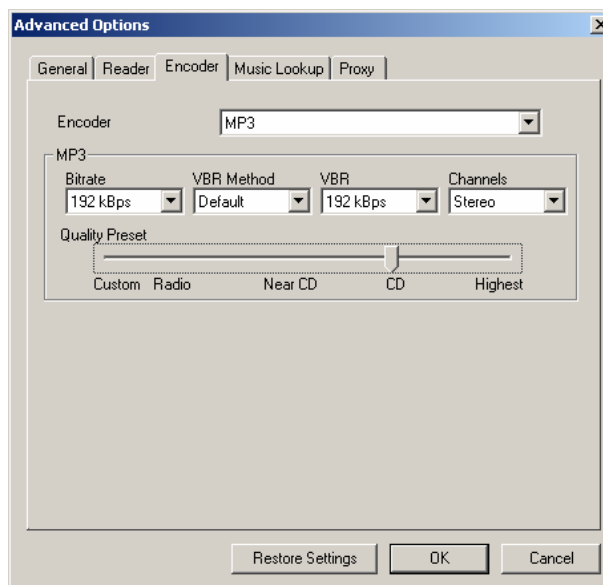
Always... uses settings in High Performance Options – Jitter Correction fields.

Double Precision... is optimized for use in converting old and used CDs.

Paranoid... is optimized for use in converting scratched and unreadable CDs.

Encoder options

When you select the 'Encoder' tab, you can change the format and write parameters the Ripper Utility uses in creating the file. The options below are available.



Encoder

The Encoder field defines the format the audio tracks will be converted to. Available options are .mp3 and .wma.

MP3

If you select .mp3 as the convert format, you can define the settings of the file using the following parameters.

Bit rate is the setting if you wish to use a Constant Bit Rate (CBR).

Values: None, 32 to 350 kbps.

Sound Quality and Bitrate		
Bitrate	Bandwidth	Sound quality similar to
32 kbps	7.5 kHz	AM radio
96 kbps	11 kHz	FM radio
128 kbps	16 kHz	CD
160-180 kbps (VBR)	20 kHz	Virtually transparent
256 kbps	22 kHz	Studio

VBR Methods are different means of varying the bit rate at which you will rip a CD. Variable Bit Rate (VBR) is a type of data compression where complex sounds are encoded at a higher rate, while simple sounds are at a lower rate. The Ripper Utility will adjust the bit rate according to the complexity of the sound. You can either try the different options below to find which method produces the compression/sound quality most to your liking, or use the default setting.

- **None.**
- **Default.**
- **Old.**
- **New.**
- **MTRH.**
- **ABR.**

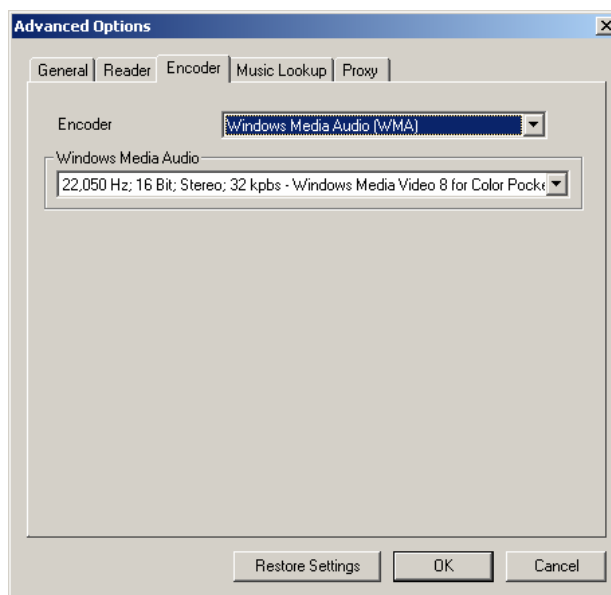
VBR. None, 8 to 350 kbps.

Channels. Defines whether the track will be written in two-channel stereo, or one channel mono.

Quality Slider. If you don't want to bother with the settings above, you can adjust the sound quality/compression using the Quality slider to determine whether a file will be converted at the fastest rate with low quality, or at the slowest rate with high quality.

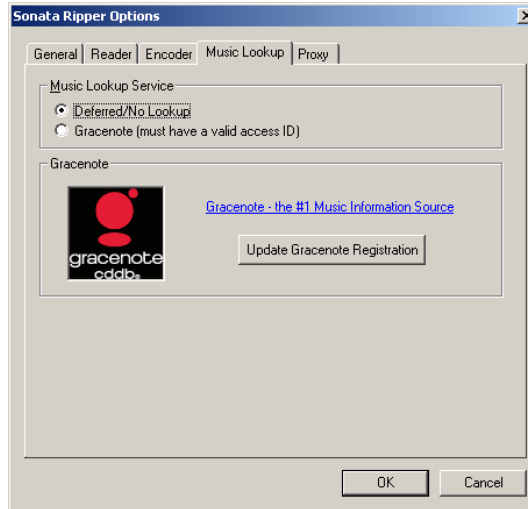
Windows Media Audio

If you select '.wma' as the audio file format for ripping, you can define the settings of the file using the Windows Media Audio field:



Music Lookup options

When the TerraPlayer displays Music Information (ID3 tags, metadata) – album titles, artists, song titles, and even album covers – it pulls the information over the internet from an online database by a Music Lookup Service provider.



Music Lookup Service

The Music Lookup Service field uses radio buttons to indicate how and where the Ripper Utility will search for music information.

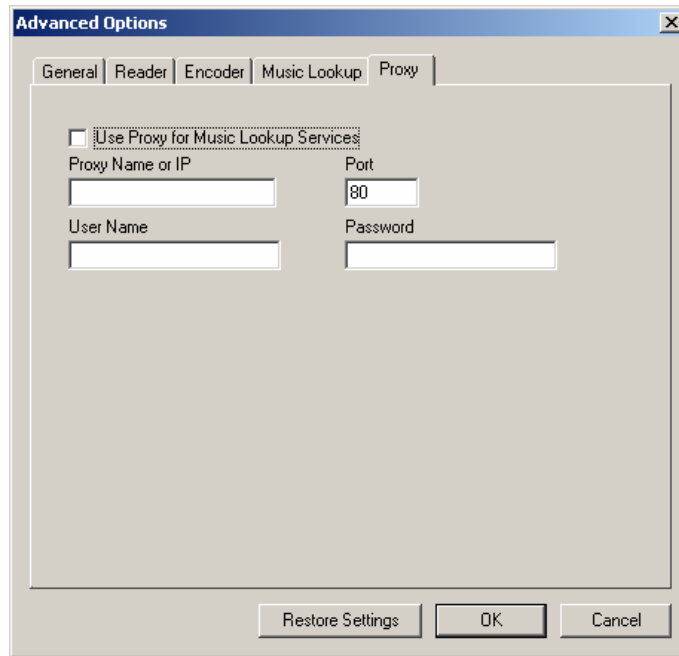
- **Deferred/No Lookup.** This option deactivates metadata lookup.
- **Gracenote.** Indicates that Gracenote services will be used. If you select this option, you will need to register using the Register button in the 'Gracenote' section.

Gracenote

If you decide to use Gracenote services for music information, you will need to register with them using the 'Update Gracenote Registration' wizard. To learn more about Gracenote, visit their website (www.gracenote.com).

Proxy options

If you are on a network with a proxy server, you will need to set up the following in order to access online data sources over the Internet:



The image shows a screenshot of a software dialog box titled "Advanced Options". It has five tabs: "General", "Reader", "Encoder", "Music Lookup", and "Proxy". The "Proxy" tab is selected. Inside the dialog, there is a checkbox labeled "Use Proxy for Music Lookup Services" which is currently unchecked. Below this checkbox are four input fields: "Proxy Name or IP", "Port", "User Name", and "Password". The "Port" field contains the number "80". At the bottom of the dialog, there are three buttons: "Restore Settings", "OK", and "Cancel".

- **Use Proxy for Music Lookup Services.** Check this to activate communication through a proxy server.
- **Proxy Name or IP.** Enter the HOSTNAME or IP Address of the proxy server.
- **Port.** The port number of the internet proxy server on the LAN. Should be provided by your system administrator.
- **User Name.** If the proxy server requires a user name for access, enter your username here.
- **Password.** If the proxy server requires a password for access, enter your password here.

The MusicInfo Utility and Wizard

Music Information is detail about a song that you get from the album cover: album name, artist name, song title, etc. This information is added to the audio files and stored in the Music Library to make it available for display on the TerraPlayer touchscreen. And so, you can still find the song details in the TerraTouch OS on the touchscreen, without keeping the CD or album covers around.

Since Music information is data about an audio file, and an audio file is basically a song converted into a data format, it is sometimes called ‘metadata’—in other words, data about data. This metadata is stored with the audio file in the form of an ID3 tag. An ID3 tag is a standard format for attaching metadata to an audio file.

The MusicInfo Wizard scans your audio file collection pulls Music Information in bulk from a data source on the Internet, and writes the ID3 tags for each audio file. So it does the work for you automatically.

However, there may be CDs in your collection for which no Music Information is available. So, sometimes you will need to add that information yourself. The MusicInfo Utility can be used to manually enter or change Music Information stored in an ID3 tag on per song or album basis.

Music Information

The Music Library stores the following music information for each track:

Music Information (ID3 Tag)	
Data Field	Definition
File	Name of audio file.
Artist	Recording artist.
Album	Name of the album which the track is from.
Track	Position of the track on the album, or song number.
Song	Song title.
Genre	Genre of track.
Year	Original release date of track.
Duration	Length of the track.

Internet Connection and the MusicInfo Utility and Wizard

It is recommended that you log in and maintain a live Internet connection during a session with the MusicInfo Utility, so it can be used to update Music Information downloaded from a data source on the web. In addition, the Wizard requires an Internet connection in order to download album covers for your existing files.

The Easy Way

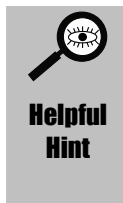
The Easy Way—Updating Music Information with the MusicInfo Wizard

The MusicInfo Wizard automatically reads all of your audio files and compares them against an online data source over the Internet, updating your audio files with the most up-to-date information available.

Depending on the size of your digital audio collection and the speed of your Internet connection, this process will take some time. Estimated times for changes are given in the following table:

	Download	Save Changes
Approximate time per 1,000 digital audio files	30-40 minutes (T1 connection)	10-25 minutes (longer times for converting ID3 v1 tags to v2)

Important! Before starting the MusicInfo Wizard, it is recommended that you backup your digital audio collection.



Helpful Hint

To get only album cover icons: If your digital audio collection already has Music Information (ID3 tags) that you are happy with, you can run the MusicInfo Wizard in a way to get only the album covers. To do this, run through the MusicInfo Wizard, but at the last step, click on the **Cancel** button. The wizard will have downloaded the album cover icons, but will not save the Music Information.

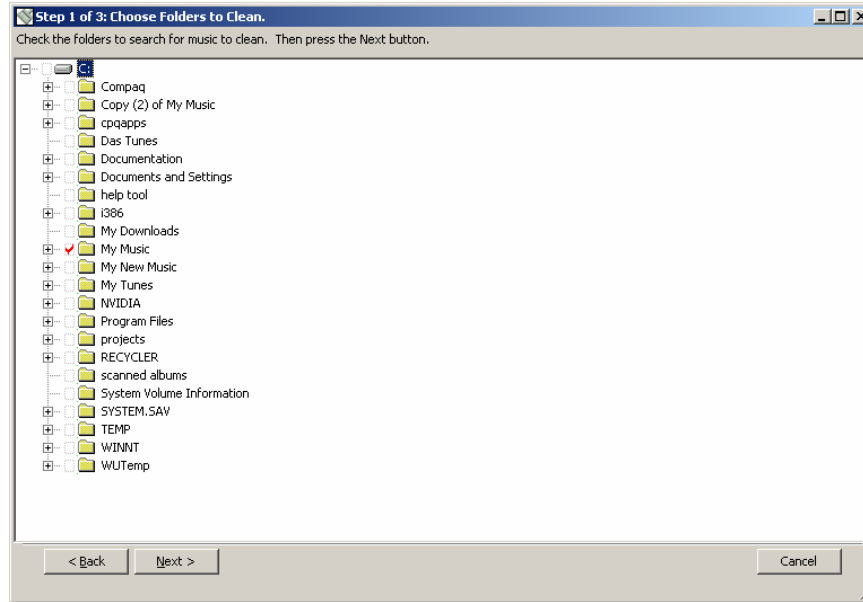
1. Start the MusicInfo Wizard



The MusicInfo Wizard can be accessed by clicking on the **Wizard** button of the TerraLaunch window.

2. Select the desired folders then click Next >

The wizard will prompt you to select the drive or folders containing the audio files you wish to update. By default, it searches all drives. Select the drive or folder, then click on the **Next >** button.



3. Select the desired audio files then click Next >

The wizard will prompt you to select the audio files you wish to update. By default, all audio files are selected. Unselect audio files you don't wish to update. You can expand the window to see all the Music Information columns. Select the drive or folder, then click on the **Next >** button.

4. Select the updated audio files to save, then click Next >

The wizard will prompt you with a list containing which files have been cleaned. Select the ones you wish to save. By default, it selects all. Select the drive or folder, then click on the **Next >** button.

A progress bar will appear on the bottom of the window to tell you how much further the MusicInfo Wizard has to go. Depending on the speed of your Internet connection and the size of your audio file collection, this may take some time.

#	x	Path	File	Artist	Album	Track	Song	Genre	Year	Duration	r:aceno:?
288	<input checked="" type="checkbox"/>	C:\My Music\Psychedelic Rock\The Filament Circus So...	Tigers - The Fla...	The Fla...	The Fla...	1	Tigers	Ro...	2003	04:10	
289	<input checked="" type="checkbox"/>	C:\My Music\Psychedelic Rock\The Filament Circus So...	Underground - T...	The Fla...	The Fla...	5	Underground	Ro...	2003	06:45	
291	<input checked="" type="checkbox"/>	C:\My Music\Roy Lanham And The Whippoorwills\Star...	06 - Someone's In ...	Roy Lan...	Hard Lif...	6	Someone's In ...	Co...	2001	02:19	3CD3...
292	<input checked="" type="checkbox"/>	C:\My Music\Roy Lanham And The Whippoorwills\Star...	16 - Arkansas Trav...	Roy Lan...	Hard Lif...	16	Arkansas Trav...	Co...	2001	02:19	3CD3...
293	<input checked="" type="checkbox"/>	C:\My Music\Roy Lanham And The Whippoorwills\Star...	27 - Kerry Dance...	Roy Lan...	Hard Lif...	27	Kerry Dance	Co...	2001	02:46	3CD3...
294	<input checked="" type="checkbox"/>	C:\My Music\SadBedroom_short.mp3	SadBedroom_short...	The Sho...	The Sho...	7	She Made M...	Un...		00:56	3CD3...
295	<input checked="" type="checkbox"/>	C:\My Music\SilverAtlas_4am.mp3	SilverAtlas_4am.mp3	Silver Atlas	4 A.M.	4	4 A.M.	Alt...	2002	03:15	3CD3...
296	<input checked="" type="checkbox"/>	C:\My Music\SilverAtlas_AlwaysTooLate.mp3	SilverAtlas_Always...	Silver Atlas	4 A.M.	1	Always Too Late	Alt...	2002	04:49	3CD3...
297	<input checked="" type="checkbox"/>	C:\My Music\Sons Of The Pioneers\The Essential Coll...	21 - I'll Take You H...	Sons Of ...	The Ess...	21	I'll Take You H...	Co...		02:15	3CD3...
298	<input checked="" type="checkbox"/>	C:\My Music\Spike Jones\Not Your Standard Spike J...	01 - Come Josephi...	Spike Jo...	(Not) Yo...	1	Come Josephi...	Ja...		03:05	3CD3...
299	<input checked="" type="checkbox"/>	C:\My Music\Spike Jones\Not Your Standard Spike J...	01 - Sheik of Arab...	Spike Jo...	Not You...	1	Sheik Of Ara...	Bo...		03:00	3CD3...
300	<input checked="" type="checkbox"/>	C:\My Music\Spike Jones\Not Your Standard Spike J...	06 - Down In Jungl...	Spike Jo...	(Not) Yo...	6	Down In Jungl...	Ja...		02:53	3CD3...
301	<input checked="" type="checkbox"/>	C:\My Music\Spike Jones\Not Your Standard Spike J...	08 - By The Beautif...	Spike Jo...	(Not) Yo...	8	By The Beauti...	Ja...		02:41	3CD3...
303	<input checked="" type="checkbox"/>	C:\My Music\Spike Jones\Not Your Standard Spike J...	14 - Down By The ...	Spike Jo...	(Not) Yo...	14	Down By The ...	Ja...		02:22	3CD3...
304	<input checked="" type="checkbox"/>	C:\My Music\Spike Jones\Not Your Standard Spike J...	15 - Casey Jones...	Spike Jo...	(Not) Yo...	15	Casey Jones	Ja...		02:32	3CD3...
305	<input checked="" type="checkbox"/>	C:\My Music\Spike Jones\Not Your Standard Spike J...	16 - De Campdown...	Spike Jo...	(Not) Yo...	16	De Campdown...	Ja...		02:55	3CD3...
306	<input checked="" type="checkbox"/>	C:\My Music\Spike Jones\Not Your Standard Spike J...	16 - The Blue Danu...	Spike Jo...	(Not) Yo...	16	The Blue Danu...	Bo...		03:52	3CD3...
307	<input checked="" type="checkbox"/>	C:\My Music\Spike Jones\Not Your Standard Spike J...	16 - The Glow Wor...	Spike Jo...	(Not) Yo...	16	The Glow Wor...	Ja...		03:54	3CD3...
308	<input checked="" type="checkbox"/>	C:\My Music\Spike Jones\Not Your Standard Spike J...	17 - Red Wing.mp3	Spike Jo...	(Not) Yo...	17	Red Wing	Ja...		02:50	3CD3...
309	<input checked="" type="checkbox"/>	C:\My Music\Spike Jones\Not Your Standard Spike J...	18 - Row, Row, Ro...	Spike Jo...	(Not) Yo...	18	Row, Row, Row	Ja...		02:42	3CD3...
310	<input checked="" type="checkbox"/>	C:\My Music\Spike Jones\Not Your Standard Spike J...	19 - Pack Up Your ...	Spike Jo...	(Not) Yo...	19	Pack Up Your ...	Ja...		02:56	3CD3...
311	<input checked="" type="checkbox"/>	C:\My Music\Spike Jones\Not Your Standard Spike J...	20 - They Go Wild ...	Spike Jo...	(Not) Yo...	20	They Go Wild ...	Ja...		02:33	3CD3...
312	<input checked="" type="checkbox"/>	C:\My Music\Spike Jones\Not Your Standard Spike J...	21 - Oh! By Jingo...	Spike Jo...	(Not) Yo...	21	Oh! By Jingo...	Ja...		03:42	3CD3...
313	<input checked="" type="checkbox"/>	C:\My Music\Spike Jones\Not Your Standard Spike J...	22 - When Buddia...	Spike Jo...	(Not) Yo...	22	It Had To Be You	Ja...		02:11	3CD3...
314	<input checked="" type="checkbox"/>	C:\My Music\Spike Jones\Not Your Standard Spike J...	27 - Campdown Ra...	Spike Jo...	(Not) Yo...	27	Campdown Ra...	Ja...		02:25	3CD3...
315	<input checked="" type="checkbox"/>	C:\My Music\Tex Beneka\Music In The Miller Mood\17...	17 - Ida! Sweet As...	Tex Ben...	Music In...	17	Ida! Sweet As...	Ja...		03:20	3CD3...
316	<input checked="" type="checkbox"/>	C:\My Music\Tex Beneka\Music In The Miller Mood\18...	18 - The Sweethea...	Tex Ben...	Music In...	18	The Sweethea...	Ja...		03:13	3CD3...

When finished, the MusicInfo Wizard will exit to the TerraLaunch window.

Advanced MusicInfo Utility

If you need to write your own music information, you can use MusicInfo.

Accessing the MusicInfo Utility

The MusicInfo Utility can be accessed by clicking on the **MusicInfo** button of the TerraLaunch window:



Overview

The MusicInfo window is broken down into the following:

Action Buttons
Also available through **File** and **Tools** options of main menu, or by right-clicking on a track.
From menu, you can also **Play** and **Stop** a track for previewing.

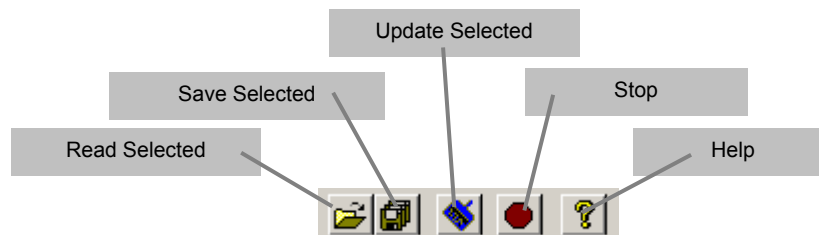
Navigator
Use the navigator to locate your audio files.

Current tags
Lists track information (ID3 tag metadata) for each track.

#	x	Path	File	Artist	Album	Track	Song	Genre	Year
1	<input checked="" type="checkbox"/>	C:\My Music\Parlour\O...	Aflipp...	Parlour	Octop...	2	Aflipperput	Pr...	2002
2	<input checked="" type="checkbox"/>	C:\My Music\Parlour\O...	Mperf...	Parlour	Octop...	4	Mperfect	Pr...	2002
3	<input checked="" type="checkbox"/>	C:\My Music\Parlour\O...	Sleep...	Parlour	Octop...	5	Sleeper	Pr...	2002
4	<input checked="" type="checkbox"/>	C:\My Music\Parlour\O...	Stipen...	Parlour	Octop...	1	Stipendiax	Pr...	2002
5	<input checked="" type="checkbox"/>	C:\My Music\Parlour\O...	The Li...	Parlour	Octop...	7	The Living Beg...	Pr...	2002
6	<input checked="" type="checkbox"/>	C:\My Music\Parlour\O...	This Ti...	Parlour	Octop...	3	This Time	Pr...	2002
7	<input checked="" type="checkbox"/>	C:\My Music\Parlour\O...	Open Save	(Ctrl-O)		6	Weeds That G...	Pr...	2002

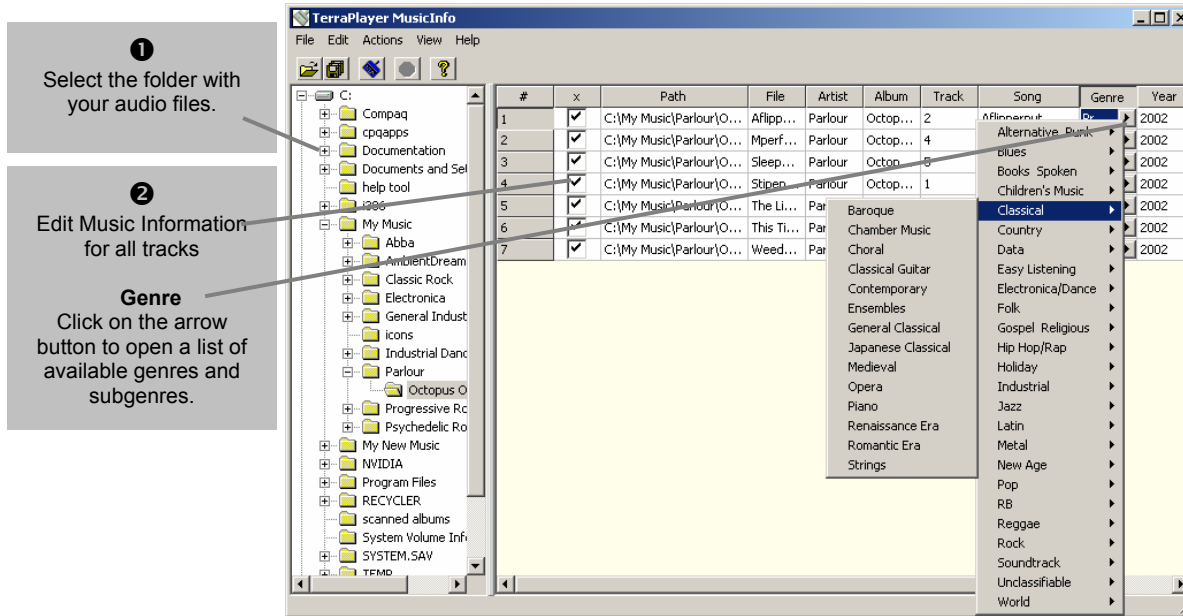
Action Buttons

The action buttons on the MusicInfo Utility are as follows:



Modifying Music Information for an Album

Using the MusicInfo Utility, creating or modifying track information is a breeze:



1. Select the folder with the audio files

Using the navigator on the left, search out and highlight the folder with the album.

2. Edit Music Information for all tracks

Make sure all tracks are selected. Double-click on any entry to edit.

3. Save the changed Music Information

From the main menu, select **File ► Save** to save the changes.

Updating Music Information for Individual Tracks

Using the MusicInfo Utility, you can also clean selected or individual tracks:

The screenshot shows the MusicInfo Utility interface. On the left is a file explorer showing a folder structure. The main area is a table with columns: #, File, Artist, Album, Track, Song, Genre, Year, and Durat. A mouse cursor is pointing at track 6 in the # column. Three callout boxes are present: 1. 'Select the folder with your audio files.' pointing to the 'AmbientDream' folder. 2. 'Select Track(s)' pointing to track 6. 3. 'Click on the Clean button to update.' pointing to a 'Clean' button icon.

#	File	Artist	Album	Track	Song	Genre	Year	Durat
1	Metropolis - Kraftwerk - The Man Machine.mp3	Kraftwerk	The Man Machine	3	Metropolis	Industrial	1970	08:59
2	Neon Lights - Kraftwerk - The Man Machine.mp3	Kraftwerk	The Man Machine	5	Neon Lights	Industrial	1970	13:17
3	SpaceLab - Kraftwerk - The Man Machine.mp3	Kraftwerk	The Man Machine	2	SpaceLab	Industrial	1970	08:47
4	The Man Machine - Kraftwerk - The Man Machine.mp3	Kraftwerk	The Man Machine	6	The Man Machine	Industrial	1970	08:11
5	The Model - Kraftwerk - The Man Machine.mp3	Kraftwerk	The Man Machine	4	The Model	Industrial	1970	05:29
6	The Robots - Kraftwerk - The Man Machine.mp3	Kraftwerk	Man Machine - Kraftwerk	6	The Man Machine	Industrial	1970	

1. Select the folder with the audio files

Using the navigator on the left, search out and highlight the folder with the album.

2. Select the track(s)

In the # column, select the track(s) you want to update.

3. Update the Music Information

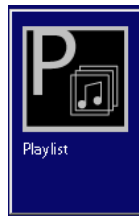
Click on the **Clean** button, and the MusicInfo Utility will update Music Information for the selected track(s).

Chapter 9:

The Playlist Utility

The Playlist Utility lets you create ahead of time lists of music you would like to play later on. Say you are planning a party and you want to DJ the music, but you don't want to stand by the stereo all night because you want to socialize. You can have it both ways by using the TerraPlayer Utility Suite's Playlist Utility to organize all the tunes you want to play before the party begins. Once you've created a playlist, it can be readily accessed through the Playlist Mode on the TerraPlayer.

Accessing the Playlist Utility



The Playlist Utility can be accessed by clicking on the **Playlist** button of the TerraLaunch window.

Overview

The Playlist Utility window is broken down into the following:

Action Buttons
Also available through the **Actions** option of the main menu. Or by right-clicking on a track in the # column.

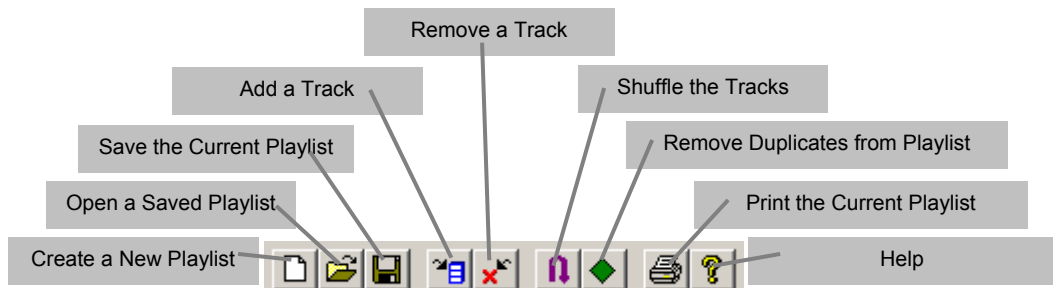
Navigator
is a directory tree for accessing the folders on your computer or network and selecting tracks.

Current Playlist Area
is where you add and reorder tracks to the playlist. Tracks can be reordered by drag-and-drop.

#	Path	File	Artist	Album	Track	Song	Genre	Year	Duration
1	C:\My Mus... SpaceLab...	SpaceLab - Kraftwerk	The Man ...	2	SpaceLab	Industrial	1978	08:47	
2	C:\My Mus... SpaceLab...	SpaceLab - Eggshell ...	The Futur...	7	Eggshell	Electronica	1994	10:08	
3	C:\My Mus... Drifting - J...	Drifting - J... Jini Hendrix	First Rays ...	6	Drifting	Classic Rock	1997	05:41	
4	C:\My Mus... The Robot...	The Robot... Kraft							

Action Buttons

The action buttons on the Playlist Utility are as follows:



The Easy Way

Creating a Playlist

Create a new playlist as follows:

1 Click the **New** button

or ...

Select **File ► New** from the main menu.

2 Select the file and click the **Add** button

or ...

Drag and drop it in the playlist.

Repeat for all tracks.

#	Path	File	Artist	Album	Track	Song	Genre	Year	Duration
1	C:\My Mus...	Spacelab - ...	Kraftwerk	The Man ...	2	Spacelab	Industrial	1978	08:47
2	C:\My Mus...	Eggshell - ...	The Futur...	Lifeforms (...)	7	Eggshell	Electronica	1994	10:08
3	C:\My Mus...	Drifting - J...	Jimi Hendrix	First Rays ...	8	Drifting	Classic Rock	1997	05:41
4	C:\My Mu...	The Book ...	Broadcast	Work And ...	2	The Book ...	Ambient/D...	1997	07:11
5	C:\My Mus...	Euthanasi...	Meat Beat...	Satyricon	10	Euthanasia	Industrial ...		06:49

3 Save when finished by clicking:

1. Create a new playlist

From the main menu of the Playlist Editor window, select **File ► New**. Or, click the **Create a New Playlist** button:



A blank playlist will appear in the current playlist area.

2. Select and add audio files

Find and select the desired track(s) in the navigator. Click the **Add** button, or drag and drop the file in the playlist. Repeat this for each file.

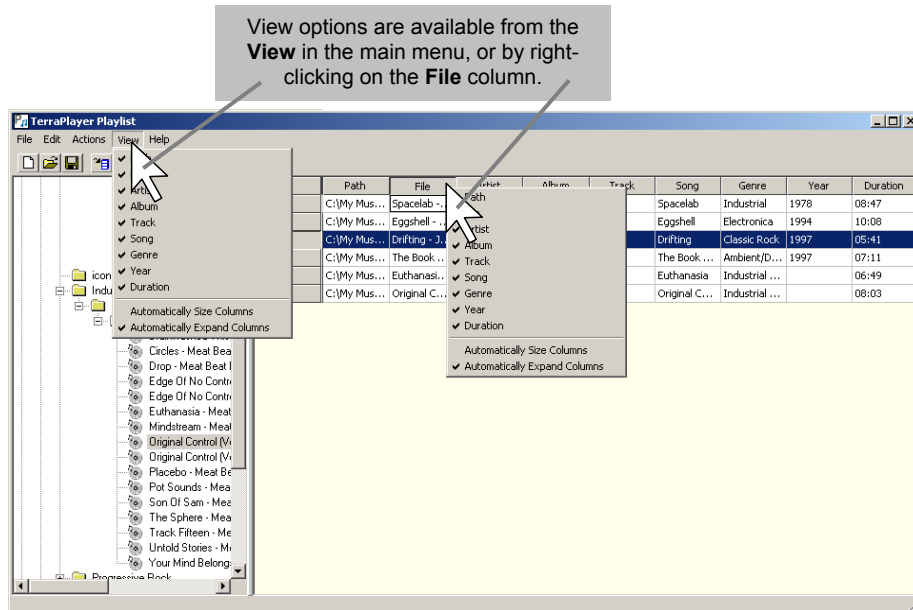
3. Save the playlist

From the main menu, click on **File ► Save**, or click on the save button in the toolbar. The Base Transceiver will automatically find the playlist, and make it available for play at the TerraPlayer Radio.

Advanced Playlist Utility

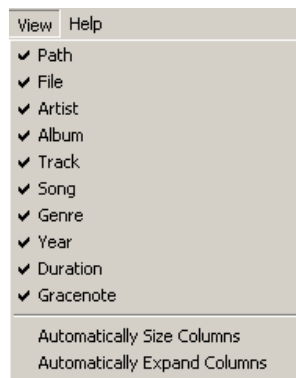
View Options

You can select which Music Information will be displayed, and the column width of that information from the View options menu. The View options menu is available from one of two places:



Music Information

You can choose to display the Music Information by checking or unchecking the option in the View menu.



☞ Refer to **Music Information** on page 98 for more information.

Automatically Size Columns

Selecting **Automatically Size Columns** will size columns as wide as possible to show all text, regardless of window size.

Automatically Expand Columns

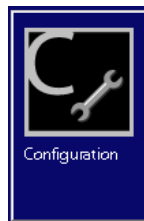
Selecting **Automatically Expand Columns** will fit columns to the window size.

The Configuration Wizard

In order to find and play audio files on the PC, the TerraPlayer requires that you configure the folders containing those audio files for file sharing. The Configuration Wizard can do this for you automatically.

☞ Refer to *Shared Music Folders* on page 13 for more information.

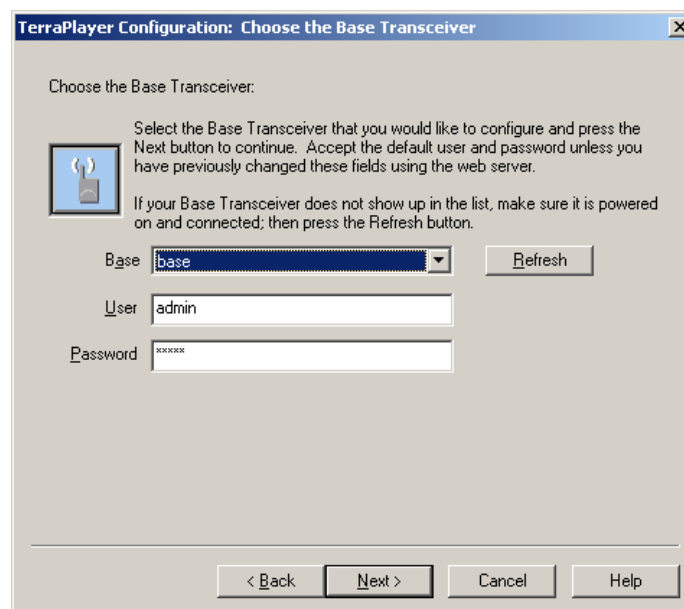
Accessing the Configuration Wizard



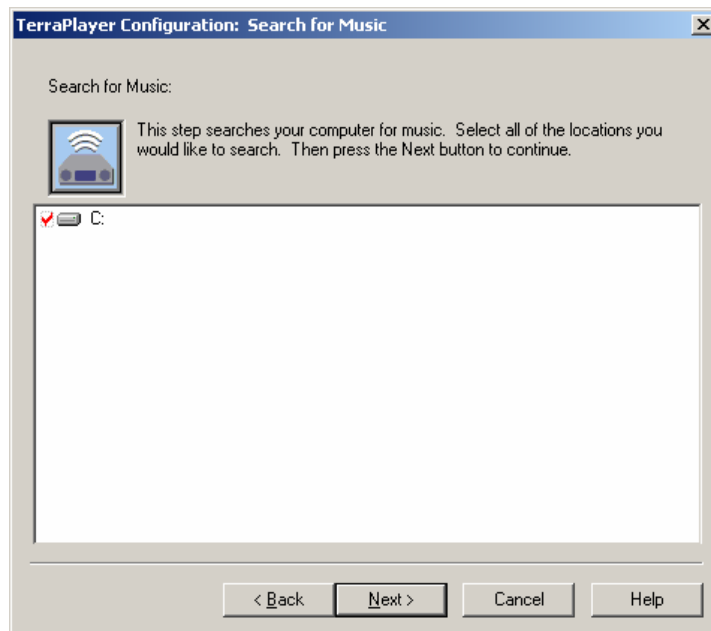
The Configuration Wizard can be accessed by clicking on the **Configuration** button of the TerraLaunch window.

The Configuration Wizard

1. Click the Next button
2. Choose a Base Transceiver (Ethernet installation with multiple Bases only)



3. Choose the hard drive to search for music



4. Choose the folders containing audio files that you wish to share



5. Click the Finish button

Appendix A: Troubleshooting

There are no album covers

Since digital audio files do not come packaged with album covers, they must be downloaded from an online data source, then 'associated', or connected, with the digital audio files before they will appear on the TerraTouch OS.

Things to look for

Have you run the MusicInfo Wizard while connected to the Internet?

The MusicInfo Wizard will scan your digital audio files. Then with the help of an active Internet connection it will download both Music Information *and* album covers. It will download album covers in the form of .jpg files and store them in the same directory as a given audio file. It will automatically 'associate' the audio and .jpg files and add them to the Music Library.

If you perform this while the TerraPlayer is on, you should reboot the Base Transceiver and the TerraPlayer Radio.

Have you run the Librarian Utility?

If you already have album cover .jpgs for the audio files, make sure first that they are installed in the same directory as the file, and are named using the album name. Then, if you run the Librarian Utility, it will read and associate the album cover .jpg file with the digital audio file.

If you perform this while the TerraPlayer is on, you should reboot the Base Transceiver and the TerraPlayer Radio.

But I've already run the Librarian Utility, and some album covers are still not showing.

Take note of which covers are still not showing and check the following:

1. There is a .jpg file of the album cover in the same directory, and that .jpg file is named using the album cover name.
2. There is only one (1) .jpg in a given directory. The Librarian Utility will not choose a .jpg if there is more than one in a directory.

Once you've verified and/or fixed these, please run the Librarian Utility again, then reboot the Base and TerraPlayer Radio.

The TerraPlayer cannot find music on the computer(s)

If the TerraTouch OS comes up, but cannot find music you know to be on the computer or network:

Things to look for

Is the Base Transceiver connected by USB or Ethernet?

A Base connected through USB will see only the files on the computer it is directly connected to, whether or not it is on a network. If you want the Base to locate files over a network, it must be connected via Ethernet.

Are the folders containing digital audio files on all networked computers set for File Sharing, or otherwise set with proper access permissions?

If you know there are audio files you want to listen to on a networked computer, you must ensure that the folder(s) they are stored in are configured as shared.

☞ Refer to *Shared Music Folders* on page 15 for more information.

For UNIX or Mac OSX machines, file permissions must be set to allow users to access a folder or directory over the network.

☞ Refer to *Non-Windows Platforms in a Network* on page 16 for more information.

Creating Shared Folders on a network requires Admin permissions

In Windows 2000, NT, or XP, if you are trying to create a Shared folder on a networked computer you must be logged in with Admin permissions.

File Sharing on Windows XP

- Has File Sharing been enabled?
- Under Internet Protocol (TCP/IP) Settings, has DHCP been enabled?
- Have the music folders been set to File Sharing?

File Sharing on Windows 2000?.

- On shared folders: Share Permissions for Everyone, TerraUser, and Adminsitrators must be set to allow Full Control, Change, and Read.
- On shared folders: Security must be set to allow Full Control, Modify, Read & Execute, List Folder Contents, Read, and Write.

The TerraPlayer lets me select and play music, but there is no sound

No sound could be caused by loose connections between the TerraPlayer Radio and the stereo, or by a dropped RF link.

Things to look for

Are the Base Transceiver and TerraPlayer Radio connecting?

To verify if the Base Transceiver and TerraPlayer Radio are currently connected by the RF link, press the following buttons on the TerraTouch OS: **SETTINGS ► SYSTEM ► NETWORK ► WIRELESS**. Check the **LINK STATE** field. If it is **OFFLINE**, you will need to join the RF link and TerraPlayer Radio. To double-check the online status, press the **MEMBER LIST** button. If the Node states are **OFFLINE** you will need to JOIN the Base and TerraPlayer Radio.

☞ Refer to *Register/Join the TerraPlayer Radio and Base Transceiver* on page Error! Bookmark not defined. for information.

Are the RCA-stereo cables loose?

Check the RCA-stereo cables running from the TerraPlayer Radio to the component stereo system to ensure that the connection is tight.

Is the stereo set up correctly?

On a typical stereo system, the TerraPlayer would be plugged into the AUX channel of the stereo system. In order to hear the TerraPlayer through the stereo, the AUX channel must be on.

A Firewall is blocking the TerraPlayer

If you have a firewall, the setting of the security level can affect the TerraPlayer.

Things to look for

Norton Personal Firewall 2003

-High Level Protection. When you install the TerraPlayer Utility Suite, each executable must be added as permitted application to the "Manual Program Control" list to work properly. When you run configuration.exe, Firewall will ask you to accept it – if you accept, it should work fine.

-To enable file sharing from the Base Transceiver, ports udp-137 and tcp-139 may need to be set to allow both inbound and outbound in the advanced firewall settings.

-NetBIOS default settings are set to 'Block' by default – these may need to be changed to 'Permit'.

McAfee Firewall 4.0

-Filter All Traffic. When you run configuration.exe, Firewall will ask you to accept it – if you accept, it should work fine. TerraPlayer Utility Suite programs will also cause Firewall to prompt you to accept them – if you accept, they should work fine.

ZoneAlarm

-Program Control at Medium setting. The firewall will prompt you to accept TerraPlayer programs when they are run, and add them to the list of secure programs.

-In order to allow file sharing, you may need to set the Trusted Zone to medium, then go to the **Firewall > Zones** page and set the local network interface to be a Trusted Zone.

SyGate Personal Firewall

-Normal Security Level. Firewall will prompt you to allow TerraPlayer programs when they run – if you accept, they are added to the list of allowable programs.

-Block All. Will block all programs, even if added to the allowed applications list.

-To enable file sharing from the Base Transceiver, rules for ports udp-137 and tcp-139 may need to be set to allow both inbound and outbound in the advanced firewall settings.

BlackICE

-?

-To enable file sharing from the Base Transceiver, rules for ports udp-137 and tcp-139 may need to be set to allow both inbound and outbound in the advanced firewall settings.

Appendix B: Specifications*

TerraPlayer Radio

Dimensions

TR-100: 13.85" wide x 4.11" tall x 10.05" deep
CR-100: 17.0" wide x 4.07" tall x 12.17" deep

Weight

TR-100: 8.75 lbs.
CR-100: 7.6 lbs.

Power Supply

120 Vac, 60 Hz (U.S. 2-prong plug)

Power Consumption

CR-100: 15 Watts maximum
TR-100: 90 Watts maximum

Fuse

CR-100: 2 AG, 500 mA, Slo-Blo, 250 V
TR-100: 2 AG, 2 Amp, Slo-Blo, 250 V

Compressed Audio Standard

MP3, Windows Media Audio

Streaming Audio Standard

Streaming MP3 support

Maximum Compressed Audio Data Rate

320 Kbps

Audio Output

Stereo (L/R) line-level, RCA connectors

Digital Audio Output

CR-100 only: Optical, Toslink

Digital-to-Analog Converter

High-quality Burr-Brown, 24-bit, 192 KHz, 106 dB dynamic range

Graphic Equalizer

5-band, low-Q, digital bandpass filters

Processor

200 MHz ARM 9

Flash Memory

32 Mb

RAM

64 Mb

Display

6.2" diagonal, 640 x 240 pixels, 4096-color, Color Super Twisted Nematic (CSTN), Liquid Crystal, Integrated touch screen – 1024 x 1024 (10-bit) resolution

Remote Control

CR-100 only:
RS-232, DB-9, DCE, 9600 baud, N, 8, 1

Operating Environment

+5° to +40° C

Expansion

External – SmartMedia

CR-100 only:

Internal –

Up to 256 MB, SDRAM, 100-pin DIMM

Wireless RF Link

Reliable high-speed link, up to 500' range

Audio Subsystem

TR-100 only:

6" full-range speaker element

2" water-resistant stereo (L/R) tweeter elements

Power: 75 Watts

Headphone Jack

TR-100 only: 1/8" mini stereo

TerraPlayer Remote Control

IR, 23 keys

Batteries: 2 x AAA (included)

Transmission range: 25' (typical)

TerraPlayer Base

Power Supply

120 Vac, 60 Hz, external 3.3 Vdc adapter

Power Consumption

2.3 Watts maximum

Dimensions

1-1.58" (tapered) wide x 4.53" tall x 4.30" deep

Weight

0.4 lbs.

LAN Connectivity

RJ-45 10/100 Mbps Ethernet

PC Connectivity

USB 1.1 standard

Wireless Link

Reliable high-speed link, up to 500' range

Processor

66 MHz ARM 7

Flash Memory

16 Mb

RAM

16 Mb

*Specifications subject to change without notice.

Appendix C:

Index

Index

- AM/FM Radio**, 10, 11, 19, 22, 23, 42, 45, 46, 56, 67, 86
 - call letters, 56, 58, 67, 75, 86, 87, 88
- audio files**
 - broken**, 56, 88
- Bit rate**, 97
- component stereo system, 11, 18
- component stereo systems, 10
- Connection
 - Ethernet, 10, 11, 12, 14, 20, 114
 - LAN, 10, 14, 99, 114
 - USB, 10, 11, 12, 14, 20, 114
- Connections, 17, 22
- digital audio formats
 - .mp3, 12, 96, 97
 - .wma, 12, 96, 97
- Digital Audio Jukebox, 2, 10
- FAV (Favorites)
 - Adding Favorites, 40
 - Deleting Favorites, 41
 - FAV View, 40, 41
 - Playing Favorites, 41
- FAV (Favorites) Mode, 39
- filepath, 12, 77, 90, 92, 93
- Hardware, 5, 17
- Icons and Music, 24
- Internet Radio, 58, 84
 - Add an Internet, 66, 67, 84, 85, 86
- License Agreement, 2
- MP3, 62, 92, 97, 114
- Music Information, 11, 12, 57, 66, 102, 105, 106
 - ID3 tags, 12
 - metadata, 12, 77, 98
- Music Library, 12, 23, 26, 69, 77, 78
- network, 11, 14, 20, 80, 99, 115
- Operating Systems
 - Linux, 11
 - Mac OS X, 11
 - UNIX, 11
 - Windows, 11, 13, 14, 78, 97, 114
- Partners
 - Gracenote, 2, 16, 90, 98, 99, 106, 115
 - LoudEye, 16
 - SHOUTcast, 16
- requirements, 5, 11, 115
- Ripper
 - buffer, 95
 - encoder, 96
 - jitter, 95, 96
 - Quality Slider, 97
 - Read Mode, 94
 - VBR Methods, 97
- shared folders, 12, 13, 14, 82
- Tap and Double-Tap, 24
- TerraPlayer
 - Base, 10, 14, 15, 20, 22, 48, 49, 72, 73, 114
 - BT-100, 10, 12, 20, 67, 86
 - How it Works, 12
 - Radio, 10, 11, 12, 17, 18, 19, 20, 21, 22, 23, 42, 45, 56, 114
 - Registering, 12, 15
 - Remote, 21, 88, 114
 - TerraTouch OS, 2, 4, 5, 10, 11, 23, 24, 31, 39, 48, 49, 69, 87, 92
- TerraPlayer Radio, 14, 25, 100, 114
- TerraPlayer Utility Suite, 2, 10, 11, 13, 14, 16, 24, 26, 57
 - Librarian, 10, 24, 26, 74, 75, 76, 77, 78, 81
 - Monitor, 10
 - MusicInfo, 10, 11, 66, 105, 106, 108, 109, 110
 - Playlist, 10, 24, 57, 68, 79, 86, 100, 101, 102, 111
 - Ripper, 10, 11, 69, 89, 91, 92, 95
 - WebServer, 10, 69, 70, 89, 100, 106, 108, 111
- TerraTouch OS
 - Library Mode, 23, 25, 27, 29, 31, 34, 40
 - Queue Mode, 23, 26, 40, 50, 51, 52
 - Radio Mode, 23, 40, 42, 43
 - REMOTE Mode, 53
 - System Mode, 15, 23, 47
- Touch and Hold, Drag and Drop, 24, 26
- Touchscreen**
 - Cleaning, 18, 19
- wireless, 10, 11, 15, 18, 19, 20, 48, 72, 114