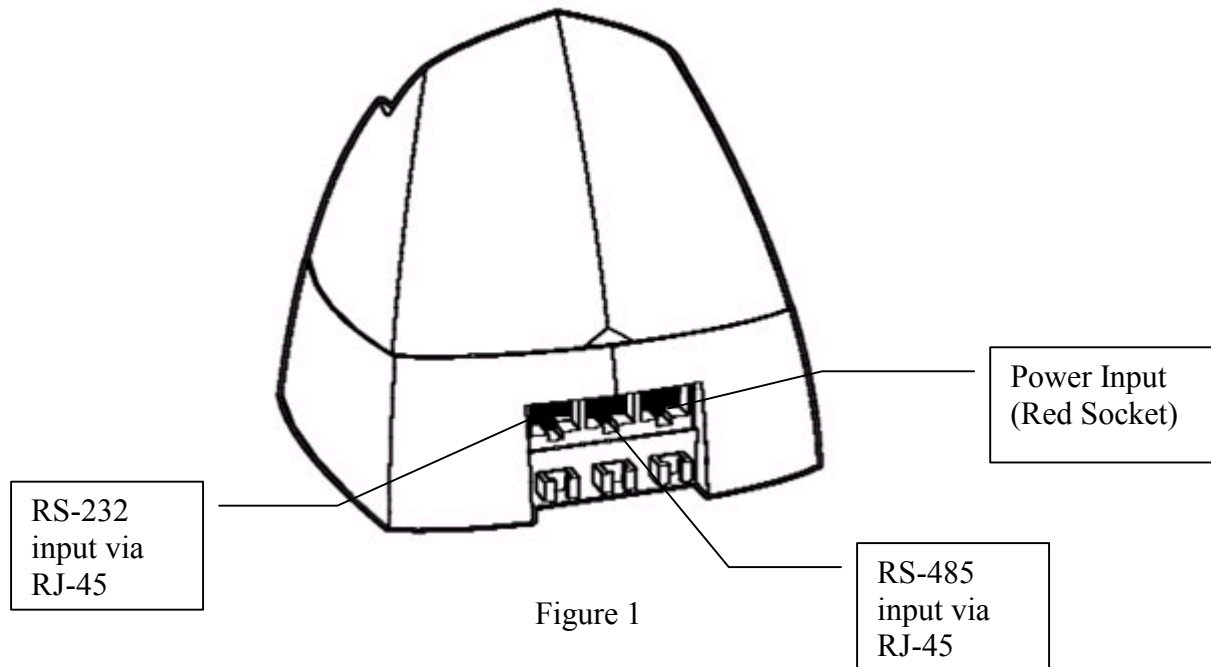


Reader Terminal POS Emulator Installation Instructions:

Caution: Any modification or changes to the unit not expressly authorized by the party responsible for compliance may void the users authority to operate the equipment.

1. Installation of POS Emulation S/W Program: **3DESREADER POS DEMO 1.0**
 - a. Install CD into drive.
 - b. From file manager/explorer select file **STARTUP.EXE**.
 - c. Walk through standard installation process by following prompts.
 - d. Installation is now complete.

2. Installation of Reader Terminal (Refer to Fig 1)
 - a. Plug the RJ-45 side of the **RS-232** (via RJ-45) Serial cable into the left-most socket of the reader & the DB-9 side of the cable into one of the **COM** ports of your PC (Typically COM 2 port).
 - c. Plug the Power input (RJ-45) into the right-most socket (Red Socket).



3. Starting the **3DESREADER DEMO 1.0** Program
 - a. Select the Windows **START** button and select **PROGRAMS** from the drop down menu.
 - b. From **PROGRAMS** select **3DESREADER DEMO 1.0**
 - c. The program will now launch and you will see the screen noted in figure 2.

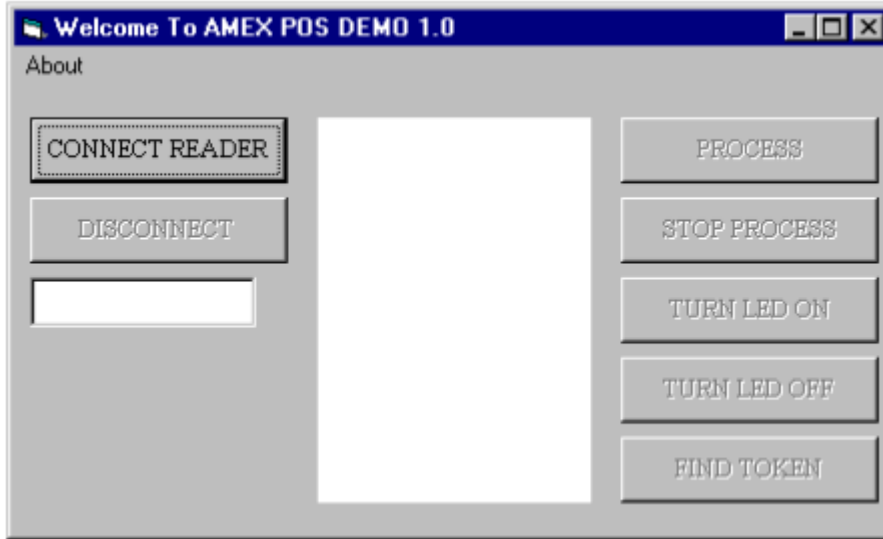


Figure 2.

4. Select the **CONNECT READER** button. If properly connected the screen then should appear as that in figure 3.

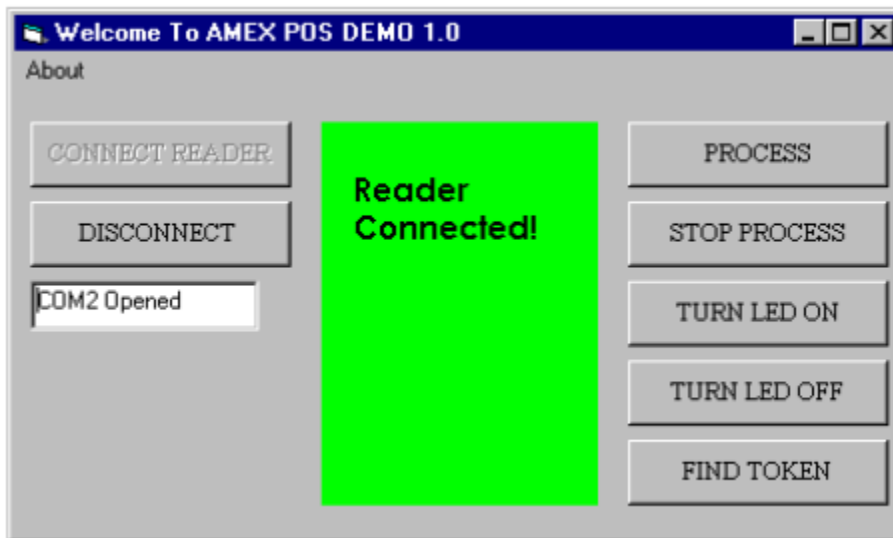


Figure 3.

5. Press the **PROCESS** button and then present the token to the reader antenna. The reader will then look for the token and the screen will then appear as that noted in figure 4 (“Looking for Token”). Once the token is found the screen will then shift to that as noted in figure 5.

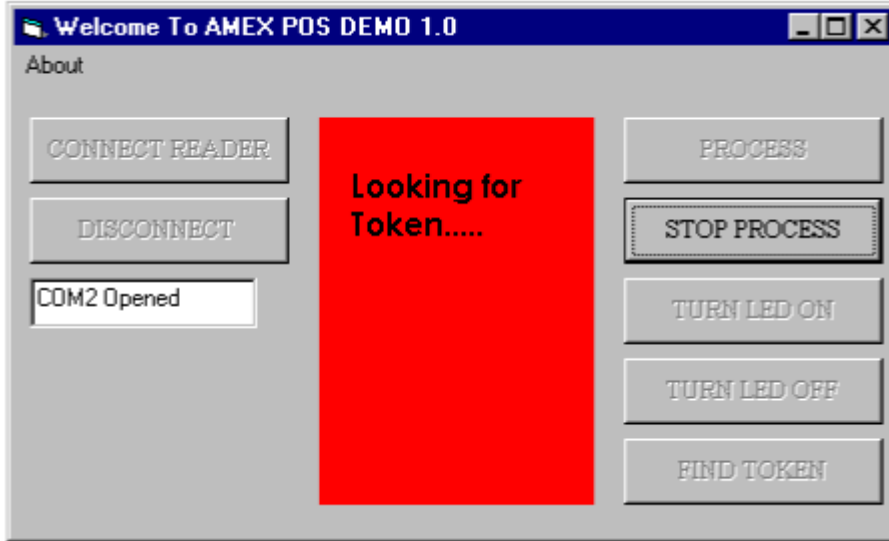


Figure 4

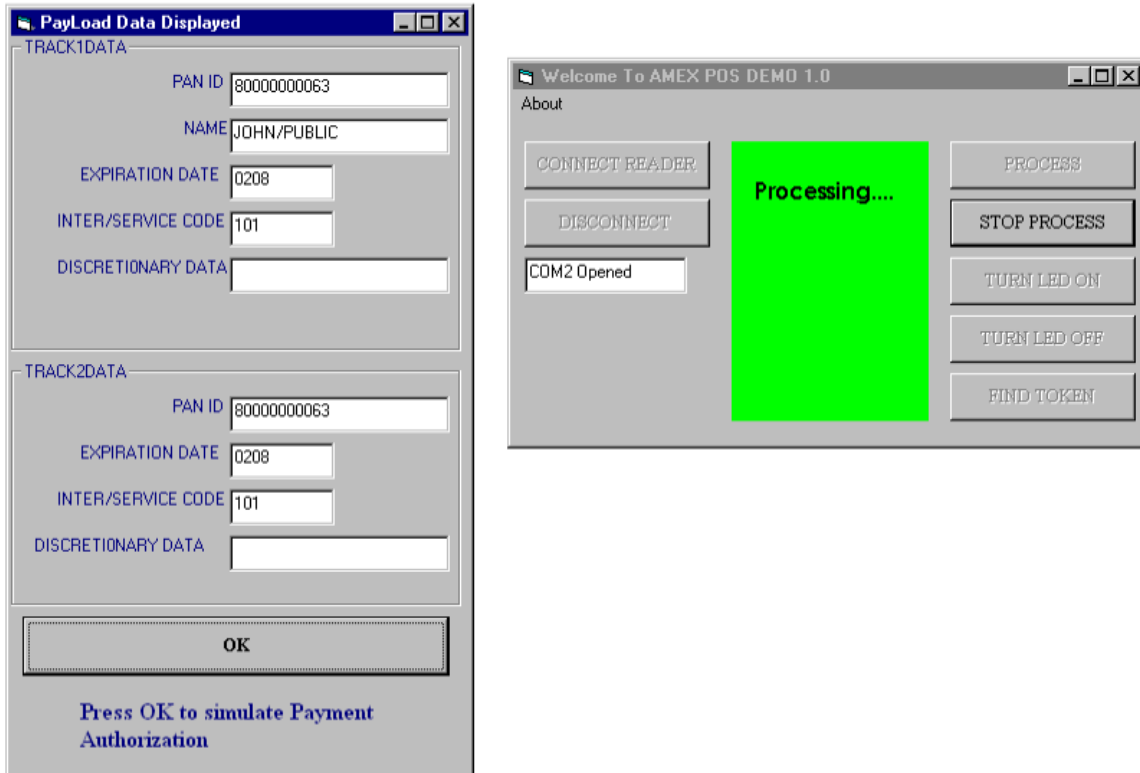


Figure 5

6. To simulate the Payment Authorization Process, select the **OK** button (Figure 5) at which point the program will simulate the authorization process while displaying the correct lighting sequence.
7. The **Find Token** command (Figure 6) can be used just to identify a token that has been placed within the antennas read field.

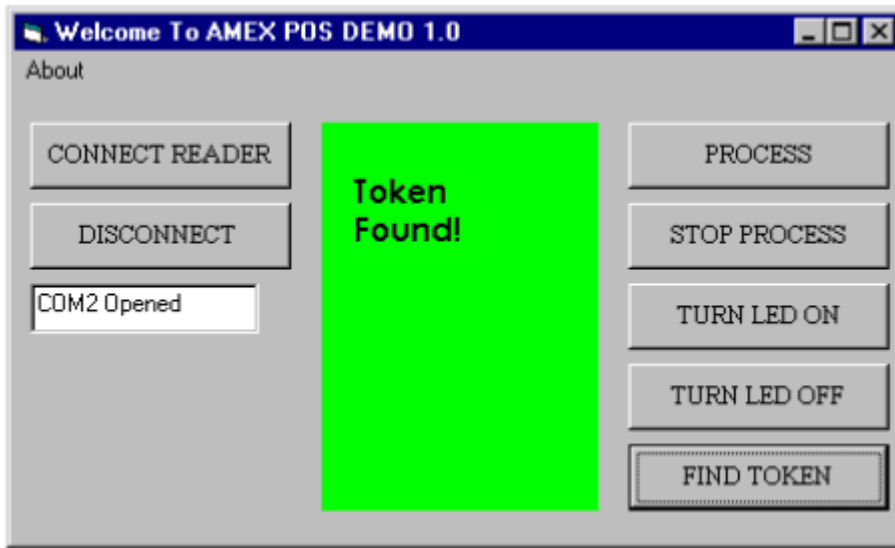


Figure 6: Find Token Command

8. To manually turn the LED's on you can select the **Turn LED On** button on the main menu Figure 7.

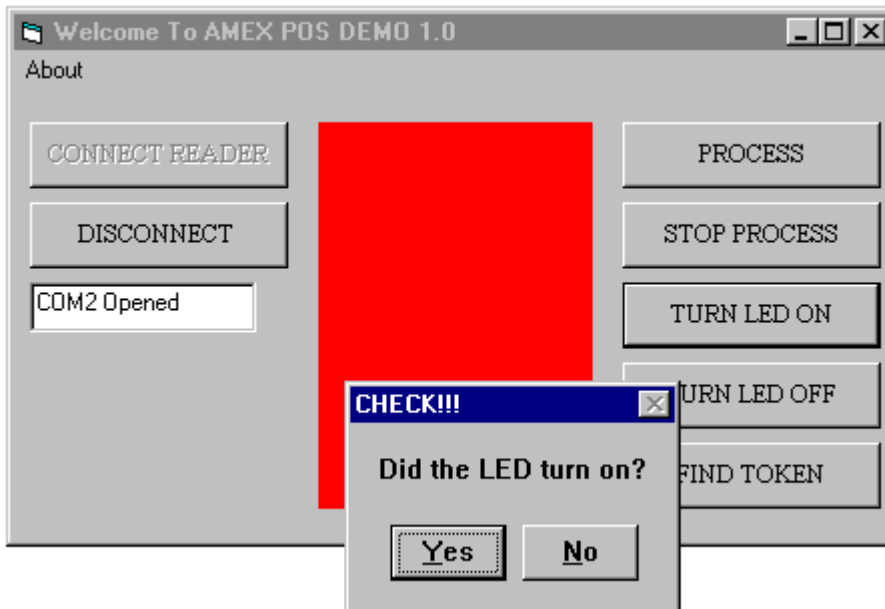


Figure 7.

9. To manually turn the LED's off select the **Turn LED Off** button as noted in figure 8.

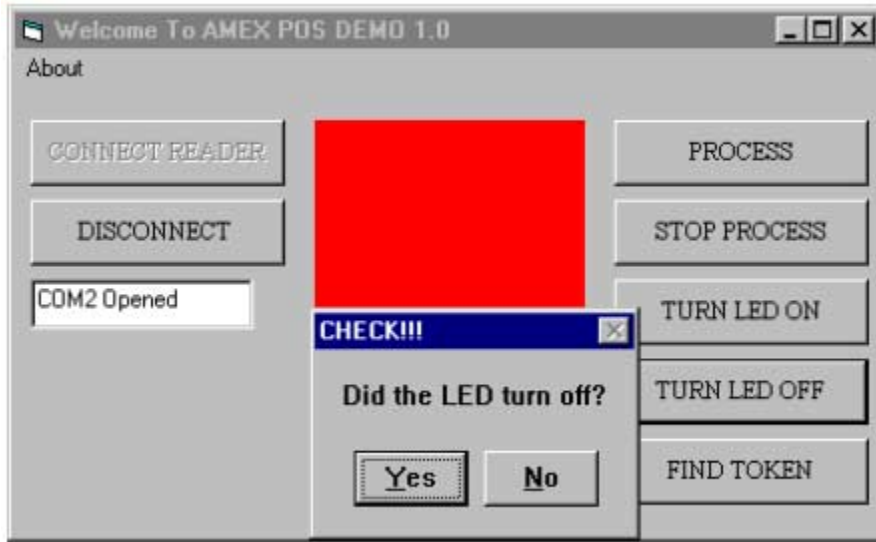


Figure 8

10. To disconnect the reader terminal select the command **Disconnect** from the main menu Figure 9.

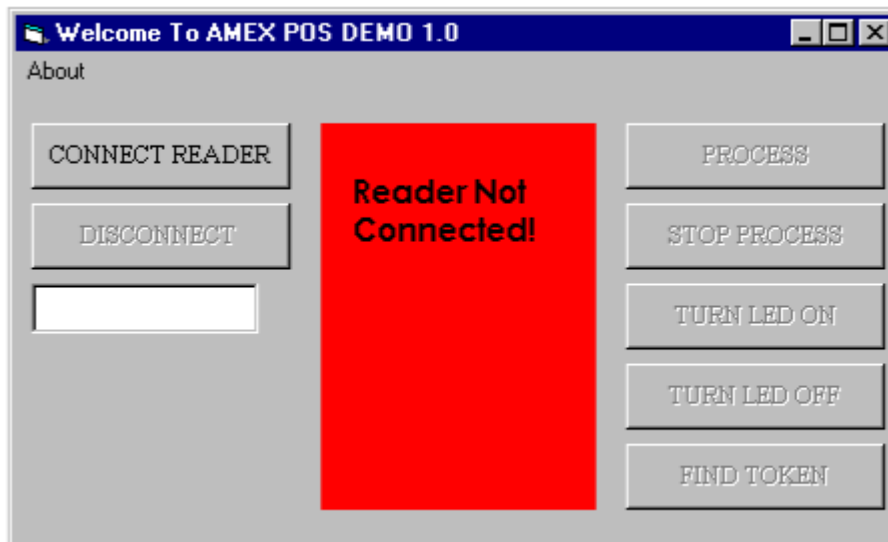


Figure 9.

11. To test the second antenna, unplug the existing **antenna** as well as the **power**. Then plug in the second antenna and then reapply the power connection. You can then use the program as noted in the aforementioned sections.

