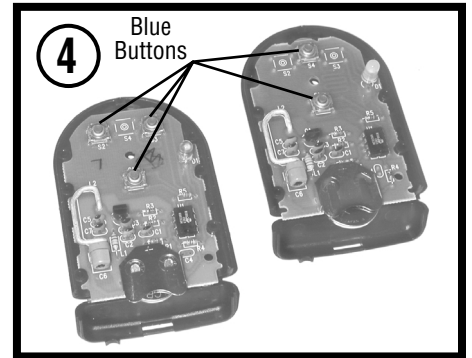
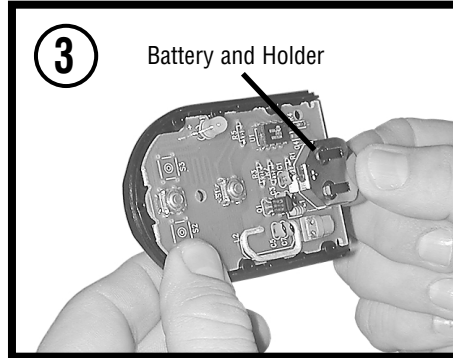
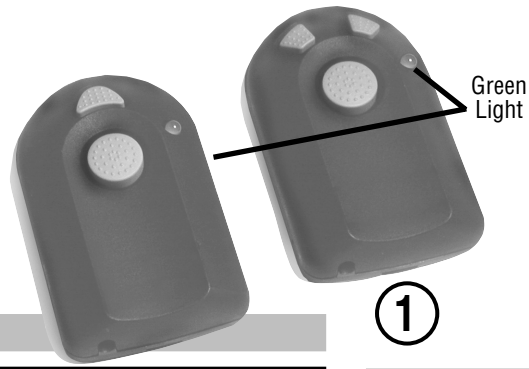


Remote Controller



! WARNING



Moving Door or Gate can cause serious injury or death

- Do Not program Remote Control unless the Door Safety Reverse works as described in Operator's Manual.
- Keep people clear of opening while Door is moving.
- Do Not allow children to play with the Remote Control, or Door Operator.

If Safety Reverse does not work properly:

- This Remote Controller WILL NOT WORK.
- Disconnect Operator using Manual Release.
- Do Not use Remote Control, or Door Operator.
- Refer to Operator Owner's Manual before attempting any repairs.

Button assignments can be mixed and matched any way you wish.

For example,

button #1 used for

button #2 used for

button #3 (if appli

Simply follow the steps of the appropriate section for each individual button.

1. On your Remote Controller—

NOTE: The Green Light (LED) also indicates the strength of the battery. It will get dimmer as the battery gets weaker. When the Light no longer comes on, you will have several operation cycles remaining, but be aware you will need to replace the battery soon. The expected life of the ENERGIZER CR2032 Lithium/Manganese Dioxide Battery is at least **5 years**.

3. On your Door Operator—Locate the Learn Code Button. (Refer to your Owner's Manual.)

4. On your Door Operator— (the Learn Code Light will begin blinking twice each second).

5. On your Remote Controller— use for controlling the first door operator, (the Learn Code Light will stay on, no blinking).

(the Learn Code Light will go out).

(the door should operate).

NOTE: Once programming is complete, it cannot be changed simply by pressing a button or combination of buttons. This helps prevent accidental disabling of your Remote Controller.

If you need to reprogram your remote for any reason, see "REPROGRAMMING" Section on back.

INTELLICODE Section

1. On your Remote Controller—

4. On your Door Operator—

(Refer to your Owner's Manual.)

6. On your Remote Controller—

use for controlling the first door operator, (the Learn Code Light will stay on, no blinking).

(the Learn Code Light will go out).

(the door should operate).

7. Repeat Steps 4 —6 for any additional INTELLICODE[®] equipped door operator you wish to control with this Remote.

NOTE: Once programming is complete, it cannot be changed simply by pressing a button or combination of buttons. This helps prevent accidental disabling of your Remote Controller.

If you need to reprogram your remote for any reason, see "REPROGRAMMING" Section.

REPROGRAMMING

If, during the first few weeks of operation, you wish to reprogram your Remote for any reason, simply follow the initial programming procedure again.

If you attempt reprogramming

BATTERY REPLACEMENT

1. Slide the visor Clip off the back of the Remote and remove the small screw.
2. With a thin flat object (the visor clip works well) push in on the catch located in the small notch at the base of the Remote. This releases the hinged section of the case. **Fig. 2.**
3. Holding the Top half of the case in one hand, and the hinged section in the other, gently pull the two halves apart. **Fig. 3.**
4. Flip the hinged section out of the way and slide the battery out of its holder. **Fig. 4.**
5. Using a new **ENERGIZER CR2032 Long Life Lithium/Manganese Dioxide Battery**, reverse the process.

BATTERY STORAGE & HANDLING

⚠ WARNING

Always keep batteries out of the reach of children. They pose an extreme internal health hazard. If swallowed contact a physician immediately.

⚠ CAUTION

Be sure to comply with Local and Federal Regulations Concerning the disposal of Lithium/Manganese Dioxide Batteries.

FCC Certified

This device complies with FCC Part 15 of the FCC Rules. Operation is subject to the following conditions: (1) This device may not cause harmful interference, and (2) this device must accept any interference, including interference that may cause undesired operation.

Changes or modifications not expressly approved by the manufacturer could void the user's authority to operate the equipment.

Certificado por la FCC

Este dispositivo cumple con las normas de la FCC (Comisión Federal de Comunicaciones), Parte 15 de Dominio de FCC. La operación está sujeta a las dos condiciones siguientes: (1) Este dispositivo puede no causar interferencia dañina, y (2) este dispositivo debe aceptar cualquier interferencia, incluyendo la interferencia que pueda causar la operación indeseable.

Los cambios o modificaciones no aprobados expresamente por el fabricante pueden invalidar la autoridad del usuario de operar el equipo

Certifié conforme à la réglementation FCC

Ce dispositif est conforme aux normes FCC section 15 de Ordonnance de FCC. Son fonctionnement est soumis aux deux conditions suivantes : (1) Il ne doit pas causer une interférence dangereuse et (2) ce dispositif doit accepter toute interférence y compris l'interférence qui peut causer le fonctionnement non désiré.

Les changements ou les modifications non approuvés expressément par le fabricant peuvent annuler l'autorisation de l'utilisateur à actionner l'équipement.