



Liberate XLBT

Noise-Isolating, Eco-Friendly Over-Ear Headphones

With Microphone and One-Button Controller

Liberate XLBT

Bluetooth® Over Ear Headphones

Greetings and Welcome to the House of Marley

We are honored you have selected Liberate XLBT to become part of your music experience. Liberate XLBT is a high performance over-ear headphone with Bluetooth Functionality and one button control. The headphone has 50mm drivers, rewind fabric headband and ear-cup, FSC wood logo treatment and protein leather ear cushions.

Everything You Need to Jam

The Liberate XLBT comes with the following items:



Liberate XLBT Headphones



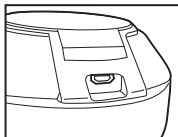
Detachable 1 button-mic cable (3.5mm)



micro USB charging cable


Powering Your Liberate XLBT


Liberate XLBT includes a built-in rechargeable battery that is charged by the included micro USB port. The LED by the power port will glow when the system is charging and turn off once the battery is full.



Connecting Your Music Device(s)

Pairing Mode (Periodic Flashing Blue LED, every 5 seconds)

Liberate XLBT automatically goes into reconnect mode for 5 seconds as soon as you turn it on (flashing BLUE led). It then switches to auxiliary mode (RED led). You can pair a new device to Liberate XLBT by holding the  for 3 seconds.

Note: Holding the  for 3 seconds will kick off the device currently connected to Liberate XLBT and go into Pairing Mode.

Connected Mode (Flashing Blue LED, every 5 seconds)

Use your Bluetooth-enabled device to pair to Liberate XLBT. Liberate XLBT does not require a pairing password. Once paired, the LED will glow solid blue.

Note: Liberate XLBT will automatically pair with the last device connected to it when turned ON (when possible).

Touch for volume control

Hold for volume ramping



Touch for BT connection (to last device)
Hold for pairing (or disconnect and pairing)



Touch to pause current track
Touch to play currently paused track



Touch to answer incoming call
Touch to end current call



Touch for track change

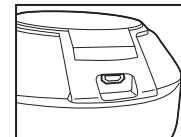
Hold for fast forward/reverse

Hold to turn "ON"
Press to check battery level
Hold to turn "OFF"

Charging Your Device

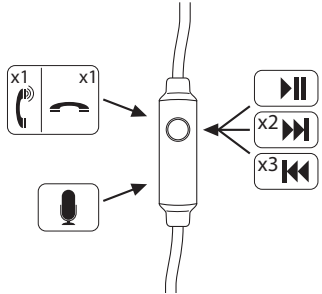
A convenient micro USB port is available on the right ear cup of the Liberate XLBT to charge your devices while it is on or off. Use the cable that came with your device to charge.

NOTE: Not all devices are compatible with the micro USB port.



Compatibility of Microphone and One-Button Control

Integrated microphone allows for hands free conversations. Push the button to answer a call; push it again to end the call. Tracking and play/pause functions as shown on the illustration work with Apple devices only.*



Support for other devices varies by model. All compatibility is subject to change.

Responsible Listening

Be sure to turn the volume down on your music player before beginning to listen. This will eliminate the risk of damaging your hearing with an excessive volume level. Never wear headphones while operating machinery, driving a car or performing any other activity where hearing outside sounds is important. If you ever experience pain or discomfort during or after listening to headphones you may be listening at an excessive volume level and causing permanent hearing damage.

Occupational Safety and Health Administration (OSHA) Guidelines for Permissible Noise Levels and Exposure Durations.

Sound Pressure Level (SPL)	Recommended Maximum Daily Exposure
90dB	8 Hours
92dB	6 Hours
95dB	4 Hours
100dB	2 Hours
105dB	1 Hour
110dB	30 Minutes
115dB	15 Minutes
Greater than 115dB	Avoid SPL levels of 115dB and greater

Important Safety Information

1. Follow and keep these instructions.
2. Heed all warnings.
3. Do not use this apparatus near water.
4. Clean only with a dry cloth.
5. Do not block any ventilation openings. Install in accordance with the manufacturer's instructions.
6. Do not install near any heat sources such as radiators, heat registers, stoves, or other apparatus (including amplifiers) that produce heat.
7. Protect the power cord from being walked on or pinched particularly at plug, convenience receptacles, and the point where they exit from the apparatus.
8. Only use attachments/accessories specified by the manufacturer.
9. Unplug this apparatus during lightning storms or when unused for long periods of time.
10. Refer all servicing to qualified service personnel. Servicing is required when the apparatus has been damaged in any way, such as power-supply cord or plug is damaged, liquid has been spilled or objects have fallen into the apparatus, the apparatus has been exposed to rain or moisture, does not operate normally, or has been dropped.
11. To reduce the risk of fire or electric shock, do not expose this apparatus to rain or moisture.

WEEE EXPLANATION



This marking indicates that this product should not be disposed with other household wastes throughout the EU. To prevent possible harm to the environment or human health from uncontrolled waste disposal, recycle it responsibly to promote the sustainable reuse of material resources. To return your used device, please use the return and collection systems or contact the retailer where the product was purchased. They can take this product for environmental safe recycling.

BATTERY DIRECTIVE



This symbol indicates that batteries must not be disposed of in the domestic waste as they contain substances which can be damaging to the environment and health. Please dispose of batteries in designated collection points.

IC Warning

RSS (Category I Equipment):

This device complies with Industry Canada licence-exempt RSS standard(s).

Operation is subject to the following two conditions:

- (1) This device may not cause interference, and
- (2) This device must accept any interference, including interference that may cause undesired operation of the device.

Le présent appareil est conforme aux CNR d'Industrie Canada applicables aux appareils radio exempts de licence.

L'exploitation est autorisée aux deux conditions suivantes:

- (1) l'appareil ne doit pas produire de brouillage, et
- (2) l'utilisateur de l'appareil doit accepter tout brouillage radioélectrique subi, même si le brouillage est susceptible d'en compromettre le fonctionnement.

Under Industry Canada regulations, this radio transmitter may only operate using an antenna of a type and maximum (or lesser) gain approved for the transmitter by Industry Canada.

To reduce potential radio interference to other users, the antenna type and its gain should be so chosen that the equivalent isotropically radiated power (e.i.r.p.) is not more than that necessary for successful communication.

Conformément à la réglementation d'Industrie Canada, le présent émetteur radio peut fonctionner avec une antenne d'un type et d'un gain maximal (ou inférieur) approuvé pour l'émetteur par Industrie Canada. Dans le but de réduire les risques de brouillage radioélectrique à l'intention des autres utilisateurs, il faut choisir le type d'antenne et son gain de sorte que la puissance isotrope rayonnée équivalente (p.i.r.e.) ne dépasse pas l'intensité nécessaire à l'établissement d'une communication satisfaisante.

IC SAR Warning

This equipment complies with IC radiation exposure limits set forth for an uncontrolled environment.

Cet appareil est conforme aux limites d'exposition aux rayonnements définies pour un environnement non contrôlé.

FCC Statement

FCC Caution

Any Changes or modifications not expressly approved by the party responsible for compliance could void the user's authority to operate the equipment.

This device complies with part 15 of the FCC Rules. Operation is subject to the following two conditions:

- (1) This device may not cause harmful interference, and
- (2) This device must accept any interference received, including interference that may cause undesired operation.

FCC Radiation Exposure Statement

IMPORTANT NOTE:

This equipment complies with FCC radiation exposure limits set forth for an uncontrolled environment.

This transmitter must not be co-located or operating in conjunction with any other antenna or transmitter.