



**M A R L E Y**

**EM-JA004-MI**

**Chant**

---

**Portable Bluetooth® Audio System**

## Greetings and Welcome to the House of Marley

We are pleased and honored you have selected this Marley product to become a part of your music experience.

Marley products support 1Love.org, the Marley family charitable organization. This global movement is dedicated to supporting youth, planet and peace.

Blessed Love,  
The House of Marley

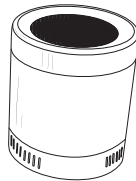
**Please read these instructions and keep them for easy reference.**

## What You Get

REWIND™ canvas  
carry bag with  
carabiner



Chant Portable Audio  
System



Mini-USB charging cable

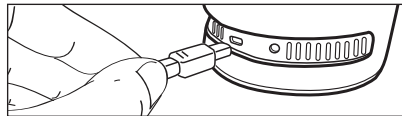


3.5mm auxiliary  
input cable



## Powering Your Chant

Chant can be charged using a computer's USB port or a USB wall adapter (not included). An LED near the charging port will light when Chant is charging and turn OFF once Chant is fully charged.



## Connecting Your Music Device(s) via Bluetooth

### Pairing Mode (Blinking Blue LED)

Chant automatically goes into pairing mode for 5 minutes as soon as you turn it ON. You can also manually put Chant into pairing mode by holding the ON slider switch in the left-most position for 3 seconds.



Note: Holding the ON slider for 3 seconds will kick off the device currently connected to Chant and go into Pairing Mode.

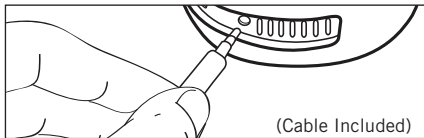
### Connected Mode (Solid Blue LED)

Pair to Chant from your Bluetooth-enabled device. Chant does not require a pairing password. Once paired, the LED will glow solid blue.

Note: Chant will automatically pair with the last device connected to it when turned ON (when possible).

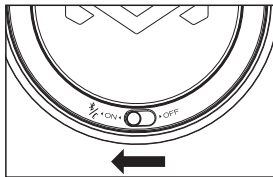
## Connecting Your Music Device(s) via 3.5mm Auxiliary Input

### (Solid Red LED)

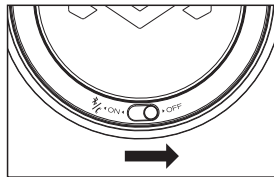


Note: If the 3.5mm Auxiliary Input cable is connected to Chant, it will automatically be selected as the default input, and Bluetooth devices will not be able to play music to Chant until the cable is unplugged.

## Easy To Use



Turn "ON"



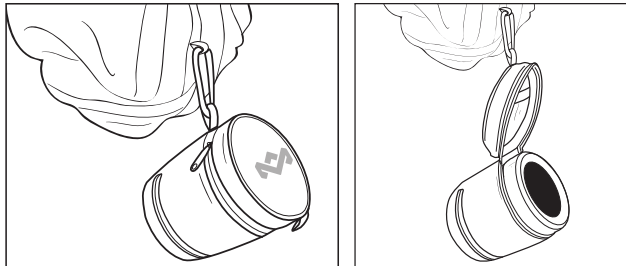
Turn "OFF"

If there is a 3.5mm Auxiliary Input Cable connected, the LED on top of Chant will glow RED.

Chant will automatically go to pairing mode for 5 minutes (blinking BLUE LED) when turned ON. Once a device is paired, the BLUE LED will glow solid.

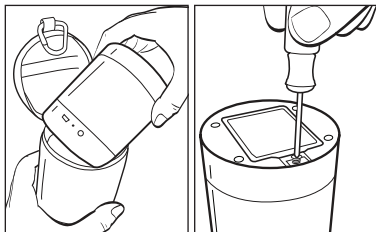
With Chant and the built-in microphone, you can answer phone calls and hang up by sliding the slider switch to the left-most position and releasing.

## Hanging Out



## Remove Battery for Disposal

1. Remove Chant from carry case.
2. Unscrew battery cover on the bottom.
3. Remove battery and only dispose in designated collection points.



## Important Safety Information

1. Follow and keep these instructions.
2. Heed all warnings.
3. Do not use this apparatus near water.
4. Clean only with a dry cloth.
5. Do not block any ventilation openings. Use in accordance with the manufacturer's instructions.
6. Do not use near any heat sources such as radiators, heat registers, stoves, or other apparatus (including amplifiers) that produce heat.
7. Unplug this apparatus during lightning storms or when unused for long periods of time.
8. Refer all servicing to qualified service personnel. Servicing is required when the apparatus has been damaged in any way, such as liquid has been spilled or objects have fallen into the apparatus, the apparatus has been exposed to rain or moisture, does not operate normally, or has been dropped.
9. To reduce the risk of fire or electric shock, do not expose this apparatus to rain or moisture.

## WEEE EXPLANATION



This marking indicates that this product should not be disposed with other household wastes throughout the EU. To prevent possible harm to the environment or human health from uncontrolled waste disposal, recycle it responsibly to promote the sustainable reuse of material resources. To return your used device, please use the return and collection systems or contact the retailer where the product was purchased. They can take this product for environmental safe recycling.

## BATTERY DIRECTIVE



This symbol indicates that batteries must not be disposed of in the domestic waste as they contain substances which can be damaging to the environment and health. Please dispose of batteries in designated collection points.

### FCC COMPLIANCE STATEMENT

This device complies with Part 15 of the FCC Rules. Operation is subject to the following two conditions: (1) this device may not cause harmful interference, and (2) this device must accept any interference received, including interference that may cause undesired operation.

Note: The manufacturer is not responsible for any radio or TV interference caused by unauthorized modifications to this equipment. Such modifications could void the user authority to operate the equipment.

Note: This equipment has been tested and found to comply with the limits for a Class B digital device, pursuant to Part 15 of the FCC Rules. These limits are designed to provide reasonable protection against harmful interference in a residential installation. This equipment generates, uses, and can radiate radio frequency energy and, if not installed and used in accordance with the instructions, may cause harmful interference to radio communications. However, there is no guarantee that interference will not occur in a particular installation. If this equipment does cause harmful interference to radio or television reception, which can be determined by turning the equipment off and on, the user is encouraged to try to correct the interference by one or more of the following measures:

- Reorient or relocate the receiving antenna.
- Increase the separation between the equipment and receiver.
- Connect the equipment into an outlet on a circuit different from that to which the receiver is connected.
- Consult the dealer or an experienced radio/TV technician for help.

Distributed by The House of Marley, 3000 Pontiac Trail, Commerce Township, MI 48390 / PO Box 460, Tonbridge, Kent, TN9 9EW, UK. The Bluetooth® word mark and logos are registered trademarks owned by Bluetooth SIG, Inc. Made in China. IB-EMJA004MI