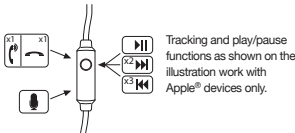


Rise BT



WARRANTY INFORMATION AND INSTRUCTIONS



130mm

Las funciones de búsqueda/encendido y pausa como se muestra en la ilustración, solamente trabajan con dispositivos Apple®. Les fonctions de suivi et de lecture/pause illustrées fonctionnent uniquement avec des appareils Apple®.

RISE BT

READ ALL INSTRUCTIONS BEFORE USE AND SAVE THESE INSTRUCTIONS FOR FUTURE REFERENCE. This equipment has been tested and found to comply with the limits for a Class B digital device, pursuant to part 15 of the FCC Rules.

BATTERY DIRECTIVE

This symbol indicates that batteries must not be disposed of in the domestic waste as they contain substances which can be damaging to the environment and health. Please dispose of batteries in designated collection points.

FR RISE BT

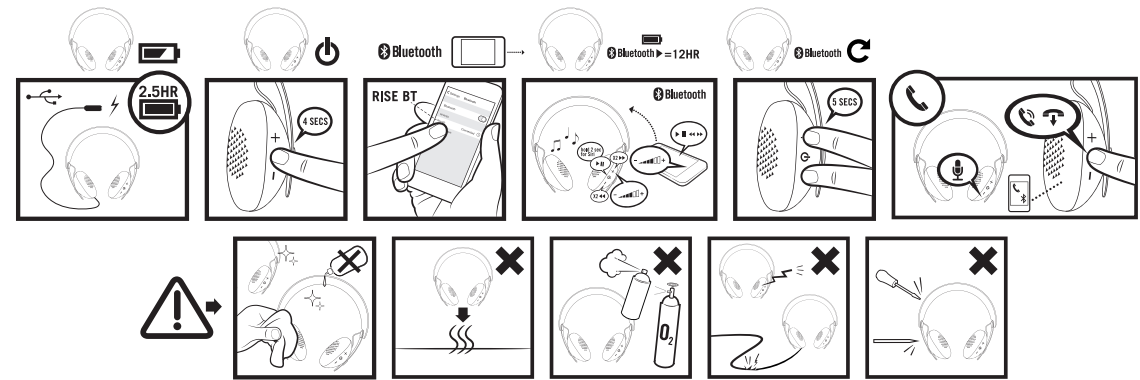
LIRE TOUTES LES INSTRUCTIONS AVANT UTILISATION. LES CONSERVER POUR POUVOIR LES CONSULTER ULTERIEUREMENT.

REPLACEMENT DES PILLES

Voire encasite Rise BT comprend une batterie rechargeable conçue pour durer aussi longtemps que le produit. Dans le cas improbable où vous seriez obligé de recourir à une batterie de rechange, veuillez contacter le Service Clientèle qui vous informera sur la garantie de votre produit et le remplacement hors garantie.

CANADA STATEMENT

This device complies with Industry Canada licence-exempt RSS standard(s). Operation is subject to the following two conditions: (1) This device may not cause harmful interference, and (2) this device must accept any interference received, including interference that may cause undesired operation.



WARRANTY INFORMATION AND INSTRUCTIONS

Tracking and play/pause functions as shown on the illustration as work with Apple® devices only.

RISE BT

READ ALL INSTRUCTIONS BEFORE USE AND SAVE THESE INSTRUCTIONS FOR FUTURE REFERENCE. This equipment has been tested and found to comply with the limits for a Class B digital device, pursuant to part 15 of the FCC Rules.

BATTERY DIRECTIVE

This symbol indicates that batteries must not be disposed of in the domestic waste as they contain substances which can be damaging to the environment and health. Please dispose of batteries in designated collection points.

FR RISE BT

LIRE TOUTES LES INSTRUCTIONS AVANT UTILISATION. LES CONSERVER POUR POUVOIR LES CONSULTER ULTERIEUREMENT.

REPLACEMENT DES PILLES

Voire encasite Rise BT comprend une batterie rechargeable conçue pour durer aussi longtemps que le produit. Dans le cas improbable où vous seriez obligé de recourir à une batterie de rechange, veuillez contacter le Service Clientèle qui vous informera sur la garantie de votre produit et le remplacement hors garantie.

CANADA STATEMENT

This device complies with Industry Canada licence-exempt RSS standard(s). Operation is subject to the following two conditions: (1) This device may not cause harmful interference, and (2) this device must accept any interference received, including interference that may cause undesired operation.

WARRANTY INFORMATION AND INSTRUCTIONS

Tracking and play/pause functions as shown on the illustration as work with Apple® devices only.

RISE BT

READ ALL INSTRUCTIONS BEFORE USE AND SAVE THESE INSTRUCTIONS FOR FUTURE REFERENCE. This equipment has been tested and found to comply with the limits for a Class B digital device, pursuant to part 15 of the FCC Rules.

BATTERY DIRECTIVE

This symbol indicates that batteries must not be disposed of in the domestic waste as they contain substances which can be damaging to the environment and health. Please dispose of batteries in designated collection points.

FR RISE BT

LIRE TOUTES LES INSTRUCTIONS AVANT UTILISATION. LES CONSERVER POUR POUVOIR LES CONSULTER ULTERIEUREMENT.

REPLACEMENT DES PILLES

Voire encasite Rise BT comprend une batterie rechargeable conçue pour durer aussi longtemps que le produit. Dans le cas improbable où vous seriez obligé de recourir à une batterie de rechange, veuillez contacter le Service Clientèle qui vous informera sur la garantie de votre produit et le remplacement hors garantie.

CANADA STATEMENT

This device complies with Industry Canada licence-exempt RSS standard(s). Operation is subject to the following two conditions: (1) This device may not cause harmful interference, and (2) this device must accept any interference received, including interference that may cause undesired operation.

WARRANTY INFORMATION AND INSTRUCTIONS

Tracking and play/pause functions as shown on the illustration as work with Apple® devices only.

RISE BT

READ ALL INSTRUCTIONS BEFORE USE AND SAVE THESE INSTRUCTIONS FOR FUTURE REFERENCE. This equipment has been tested and found to comply with the limits for a Class B digital device, pursuant to part 15 of the FCC Rules.

BATTERY DIRECTIVE

This symbol indicates that batteries must not be disposed of in the domestic waste as they contain substances which can be damaging to the environment and health. Please dispose of batteries in designated collection points.

FR RISE BT

LIRE TOUTES LES INSTRUCTIONS AVANT UTILISATION. LES CONSERVER POUR POUVOIR LES CONSULTER ULTERIEUREMENT.

REPLACEMENT DES PILLES

Voire encasite Rise BT comprend une batterie rechargeable conçue pour durer aussi longtemps que le produit. Dans le cas improbable où vous seriez obligé de recourir à une batterie de rechange, veuillez contacter le Service Clientèle qui vous informera sur la garantie de votre produit et le remplacement hors garantie.

CANADA STATEMENT

This device complies with Industry Canada licence-exempt RSS standard(s). Operation is subject to the following two conditions: (1) This device may not cause harmful interference, and (2) this device must accept any interference received, including interference that may cause undesired operation.

356mm

est en conformité con los requisitos esenciales y otras disposiciones relevantes de la Directiva 1999/5/CE. Si desea una copia de la declaración de conformidad, solicítela a HoMedics Group Ltd, HoMedics House, Somehill Business Park, Five Oak Green Road, Tonbridge, Kent, TN11 0GP, UK/support@homedics.co.uk

FIN RISE BT

LUE KAIKKI OHJEET ENNEN KÄYTTÖÄ. SÄILYTÄ NÄMÄ OHJEET TULEVAAN TÄRKEITÄ VÄRTEEN. TÄRKEÄT VÄRTOIMENPITEET.

WEEE SELUTYS

This symbol indicates that batteries must not be disposed of in the domestic waste as they contain substances which can be damaging to the environment and health. Please dispose of batteries in designated collection points.

DE RISE BT

LESEN SICH VOR DER BENUTZUNG ALLE HINWEISE GUT DURCH. BEWAHREN SIE DIESE HINWEISE GUT AUF.

BATTERIE RICHTLINE

This symbol indicates that batteries must not be disposed of in the domestic waste as they contain substances which can be damaging to the environment and health. Please dispose of batteries in designated collection points.

WEEE-ERKLÄRUNG

This symbol indicates that batteries must not be disposed of in the domestic waste as they contain substances which can be damaging to the environment and health. Please dispose of batteries in designated collection points.

TR RISE BT

KULLANMÄD ÖNCE TÜM TALİMATLARI OKUYUN. BU TALİMATLARI DİHA SONRA BAŞVURMAK ÜZERE SAK.

DK RISE BT

LÆS HELE VEJLEDNINGEN IGENNEM FØR BRUG. GEM DENNE VEJLEDNING TIL SENERE BRUG.

UDSKIFTNING AF BATTERI

This symbol indicates that batteries must not be disposed of in the domestic waste as they contain substances which can be damaging to the environment and health. Please dispose of batteries in designated collection points.

BATTERIDIREKTIV

This symbol indicates that batteries must not be disposed of in the domestic waste as they contain substances which can be damaging to the environment and health. Please dispose of batteries in designated collection points.

malzeme kaynaklarını sürdürülebilir şekilde yeniden kullandıklarını sağlar. İş bu vesileyle, HoMedics Group Ltd, bu ses cihazını 1999/5/EC Yönergesinin temel gereklilikleri ve diğer ilgili hükümlerle uyumlu olduğunu beyan eder. Uygunluk Beyanını bir kopyası HoMedics Group Ltd, HoMedics House, Somehill Business Park, Five Oak Green Road, Tonbridge, Kent, TN11 0GP, UK/support@homedics.co.uk adresinden temin edilebilir.

SV RISE BT

LÄS DESSA INSTRUKTIONER OCH BEHÅLL DEM FÖR ENKEL REFERENS. LÄS ALLA INSTRUKTIONERNA FÖRE ANVÄNDNING. SPARA DESSA INSTRUKTIONER FÖR FRAMTIDA REFERENS.

BATTERIFÖRESKRIFT

This symbol indicates that batteries must not be disposed of in the domestic waste as they contain substances which can be damaging to the environment and health. Please dispose of batteries in designated collection points.

RU RISE BT

ПРОЧИТАЙТЕ ВСЕ ИНСТРУКЦИИ ПЕРЕД ИСПОЛЬЗОВАНИЕМ. СОХРАНИТЕ ЭТИ ИНСТРУКЦИИ ДЛЯ ДАЛЬНЕЙШЕГО ИСПОЛЬЗОВАНИЯ.

ЗАМЕНА БАТАРЕЙКИ

This symbol indicates that batteries must not be disposed of in the domestic waste as they contain substances which can be damaging to the environment and health. Please dispose of batteries in designated collection points.

ΠΡΟΣΗΛΗΘΕΙΣ ΣΤΑ ΠΡΟΒΛΗΤΑ ΚΑΙ ΣΤΗΝ ΑΝΤΙΚΑΤΑΣΤΑΣΗ

This symbol indicates that batteries must not be disposed of in the domestic waste as they contain substances which can be damaging to the environment and health. Please dispose of batteries in designated collection points.

ΠΡΟΒΛΗΤΑ ΚΑΙ ΣΤΑ ΠΡΟΒΛΗΤΑ

This symbol indicates that batteries must not be disposed of in the domestic waste as they contain substances which can be damaging to the environment and health. Please dispose of batteries in designated collection points.

ČZ RISE BT

PŘED POUŽITÍM ZAŘÍZENÍ SI PŘEČTĚTE VŠECHNY POKYNY. POKYNY USCHOVEŇTE PRO BUDOUCÍ NAHLÉDNUTÍ.

ΥΠΗΜΕΝΑ ΒΑΤΕΡΙΕ

This symbol indicates that batteries must not be disposed of in the domestic waste as they contain substances which can be damaging to the environment and health. Please dispose of batteries in designated collection points.

POKYNY K BATERII

This symbol indicates that batteries must not be disposed of in the domestic waste as they contain substances which can be damaging to the environment and health. Please dispose of batteries in designated collection points.

denne afmærkning angiver, at dette produkt ikke må bortskaffes med andet husholdningsaffald inden for EU. For at forhindre mulig skade for miljøet eller menneskeligt helset forårsaket af ukontrolleret affaldsbortskaffelse, skal det genanvendes på ansvarlig vis for at fremme den bæredygtige genanvendelse af materielle ressourcer.

WEEE FÖRKLARING

This symbol indicates that batteries must not be disposed of in the domestic waste as they contain substances which can be damaging to the environment and health. Please dispose of batteries in designated collection points.

LES LE ALE INSTRUKCIJE PRED UPOTREBU. ZARUČUJEMO DA VAŠE INSTRUKCIJE NE GUBITE.

SKIFTE BATTERI

This symbol indicates that batteries must not be disposed of in the domestic waste as they contain substances which can be damaging to the environment and health. Please dispose of batteries in designated collection points.

WEEE-FÖRKLARING

This symbol indicates that batteries must not be disposed of in the domestic waste as they contain substances which can be damaging to the environment and health. Please dispose of batteries in designated collection points.

EL RISE BT

ΔΙΑΒΑΣΤΕ ΟΛΕΣ ΤΙΣ ΟΔΗΓΙΕΣ ΠΡΙΝ ΤΗ ΧΡΗΣΗ. ΦΥΛΑΞΤΕ ΑΥΤΕΣ ΤΙΣ ΟΔΗΓΙΕΣ ΓΙΑ ΜΕΛΛΟΝΤΗΝ ΑΝΑΦΟΡΑ.

ΕΠΕΛΥΣΗ ΑΗΝΕ

This symbol indicates that batteries must not be disposed of in the domestic waste as they contain substances which can be damaging to the environment and health. Please dispose of batteries in designated collection points.

Με το παρόν, η HoMedics Group Ltd δηλώνει ότι αυτή η συσκευή ή/και οι συστατικοί της συμμορφώνονται με τις οικολογικές απαιτήσεις και τις άλλες σχετικές προβλεπόμενες της Οδηγίας 1999/5/ΕΚ. Μπορεί να αποκοπεί ένα αντίγραφο της δήλωσης Συμμόρφωσης αν επικοινωνήσετε με τη διευθύνση HoMedics Group Ltd, HoMedics House, Somehill Business Park, Five Oak Green Road, Tonbridge, Kent, TN11 0GP, UK/support@homedics.co.uk

ČZ RISE BT

PŘED POUŽITÍM ZAŘÍZENÍ SI PŘEČTĚTE VŠECHNY POKYNY. POKYNY USCHOVEŇTE PRO BUDOUCÍ NAHLÉDNUTÍ.

ΥΠΗΜΕΝΑ ΒΑΤΕΡΙΕ

This symbol indicates that batteries must not be disposed of in the domestic waste as they contain substances which can be damaging to the environment and health. Please dispose of batteries in designated collection points.

POKYNY K BATERII

This symbol indicates that batteries must not be disposed of in the domestic waste as they contain substances which can be damaging to the environment and health. Please dispose of batteries in designated collection points.

