

**P&G (F&HC)  
Enterprise**

**Air Freshener**

**Type 4680 (with Charger Base 4660)**

**Use Instructions**

06/23/16 v12

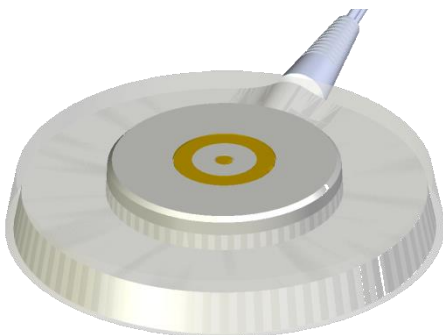
**What's Included:**

1. **One Air Freshening Device**
2. **One Charging Base**
3. **One Fragrance Refill with reusable Safety Seal**
4. **One Power adapter**

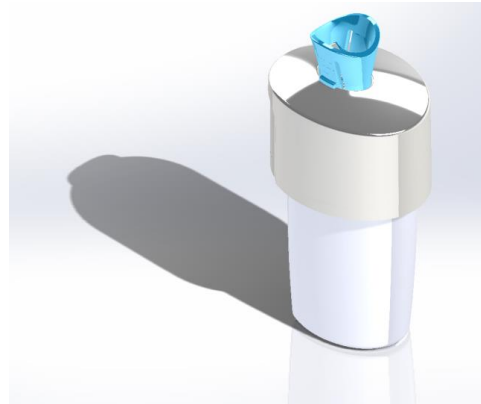
1.



2.



3.



4.



Our products are engineered to meet the highest standards of quality, functionality and design. We hope you thoroughly enjoy your new P&G device. Please read these use instructions carefully before use and keep them for future reference. For product videos please go to <http://www.pg.com/enterprise>.

**INSTRUCTIONS PERTAINING TO A RISK OF FIRE, ELECTRIC SHOCK, OR INJURY TO PERSONS**  
**IMPORTANT SAFETY INSTRUCTIONS. PLEASE SAVE**

**DANGER:**



**To reduce the risk of electric shock:**

- 1) The power supply, the device and the charger unit are not for immersion in water or for use in the shower or in damp/wet areas.
- 2) Use only in properly functioning 120-volt electrical outlet.
- 3) For indoor use only.
- 4) Do not use with extension cords.
- 5) Except when charging, always unplug this device from the electrical outlet
- 6) Unplug this device before cleaning.

**IMPORTANT**

- 1) Close supervision is necessary when using any device near children.
- 2) Keep out of reach of children and pets. Intended for Adult Use Only.
- 3) Always unplug the appliance from the outlet when not in use. Never yank cord to remove plug from an outlet. Grasp plug and pull to disconnect.
- 4) Do not use the device for anything other than its intended use.
- 7) Use only in areas with at least 30 cm/12" clearance above the unit.
- 8) Do not place the fragrance bottles or caps on finished wood surfaces.
- 9) Do not turn the device upside down when perfume has been inserted, as it will leak and may damage surfaces.
- 10) Discontinue use if the appliance is dropped or damaged
- 11) If the plug does not fit fully into the outlet, reverse the plug. If it still does not fit, contact a qualified electrician to install the proper outlet. Do not change the plug in any way.
- 12) Do not wrap the charging base cord around the device during use or storage.
- 13) Regularly check both the charging base cord and the device for wear or damage. If the cord or device becomes damaged, unplug and stop using immediately.

**WARNING** - When using electric products, basic precautions should always be followed, including the following:

- a) Read all the instructions before using the product.
- b) To reduce the risk of injury, close supervision is necessary when a product is used near children or pets.
- c) Do not put fingers or hands into the device.
- d) Do not disassemble the device, refill, plug or charger base. No user serviceable parts.
- e) Do not modify or repair the product. This may cause fire, electric shock or injury.
- f) Do not touch the SmartPlug with wet hands. This can cause electric shock.
- g) Use this product only for its intended use as described in this manual. Do not use attachments or chargers not recommended.

**FCC NOTIFICATION** - This device complies with part 15 of the FCC Rules. Operation is subject to the following two conditions: (1) This device may not cause harmful interference, and (2) this device must accept any interference received, including interference that may cause undesired operation. The user is cautioned that changes or modifications not expressly approved by the party responsible for compliance could void the user's authority to operate the equipment.

**CAUTION: EYE IRRITANT.** Avoid contact with eyes and skin. Wash hands after handling. Use only in well-ventilated area. **KEEP OUT OF REACH OF CHILDREN AND PETS.**

**FIRST AID TREATMENT:** Contains fragrance oils. IF SWALLOWED, call a poison control center or physician immediately. Do not induce vomiting. If in eyes, rinse with plenty of water for 20 minutes. If eye irritation persists, consult a physician.

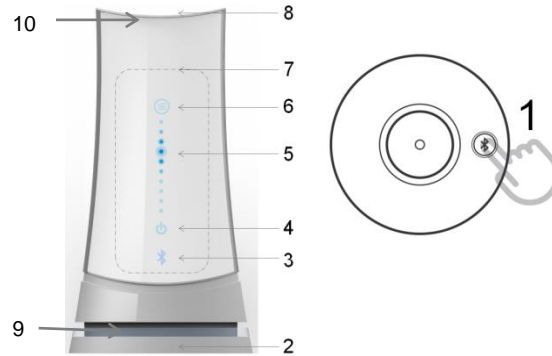
**PACKAGING**

The packaging contains an individual access code for the iOS or Android app.

**IMPORTANT:** Please make sure to make note of the access code before recycling the packaging

**INSTALLATION****A Description**

- 1 Bluetooth pairing / wakeup button
- 2 Charging base
- 3 Bluetooth indicator
- 4 On/off touch button
- 5 Fragrance intensity touch buttons
- 6 Boost touch button
- 7 Proximity sensor area
- 8 Perfume refill insertion
- 9 Battery level indicator LED and night light
- 10 Refill level indicator LED and night light

**B Before first use**

- 1) Connect the charging base to an electrical outlet. Place the device onto the base and allow 4 to 6 hours to fully charge. The device front LED lights will illuminate to indicate when fully charged. Your device is now ready to use manually.
- 2) If wanting to pair your mobile device to utilize the App on your phone, please download the Febreze App, and then simply press the Bluetooth button (1) on the bottom side of the device. Once the device and smartphone are sync'd, the Bluetooth icon will remain lit, on the front of the device. You can now enjoy using your device either manually with the touch buttons or via the App on your phone.

**C Using the touch panel**

- 1) To turn the device ON, simply press the On/Off button (4).
- 2) If you move your hand in front of the device, the proximity sensor will recognize it and activate the touch buttons.
- 3) After adjusting the device to your selected settings, all the LEDs will dim after 10 seconds.
- 4) To reactivate the buttons simply move your hand in front of the proximity sensor on front of the device again.

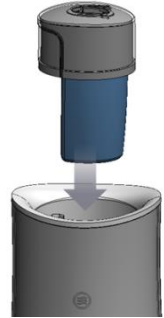
**D Perfume Refill**

- 1) Remove all package foils from the fragrance refill.
- 2) Remove the re-usable transportation and storage safety seal as shown:  
*\*NOTE: Do not discard the seal, it is re-usable*
- 3) Press inward on the two lips of the seal with your fingers (A) to release and then pull the seal from the cap. The refill is now ready to use in the device.
- 4) To store a partially filled refill, re-insert the re-usable seal to keep your refill fresh for use at a later date.

**IMPORTANT WARNINGS:** Refill safety seal is a potential choke hazard. Keep out of reach of children.

## E Fragrance Refill placement into Device

- 1) After removing the transport and storage seal, insert the perfume cartridge carefully into the top of the device according to the following picture.
- 2) Press down gently on the top of the refill until you feel a resistance and hear an audible >click<. The refill is now positioned correctly and ready for use.
- 3) To remove the refill, gently press down on the top of the refill cap and the device will release the refill.
- 4) For use with P&G Air Freshener **Type 4680**



## OPERATION

### A Manual mode

- 1) To start fragrance delivery, simply load a refill into the device as explained in Part E and turn the device ON by pressing the ON/OFF button (4).
- 2) Your new device has been pre-set to start on Intensity 5. To adjust the fragrance intensity, you may either touch or move your finger over the vertical light bar (5). Scent intensity ranges from 1 to 10.
- 3) Removing your finger will store your setting.
- 4) To stop fragrance delivery, press the ON/OFF touch button (4) and the device will turn OFF.
- 5) In case you want or need an immediate high impact fragrance delivery, push the Boost touch button (6).
- 6) The Boost touch button is only available once every 30 min.



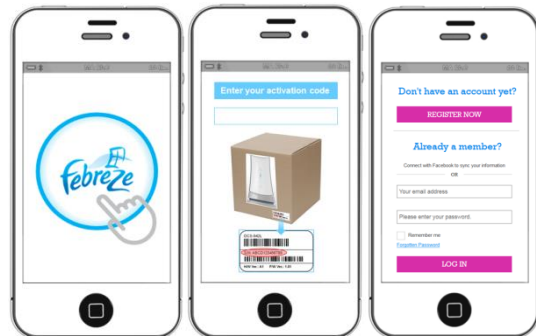
### B Program mode / remote device access

To unleash the full potential and enable all features of your new product it is recommended to connect your device with your Smartphone or tablet. The pairing allows full remote control and activates more features.

- The program mode allows you to program your device to turn ON and OFF at specific times and days.

### C Connecting your device to your Smartphone

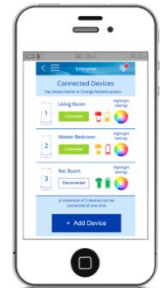
- 1) Download the Febreze app from iTunes store (iOS) and Google Play Store and make sure that Bluetooth in your Smartphone/tablet is activated.
- 2) When the app appears, tap on the Febreze logo on the splash screen and follow the instructions. The app will guide you through the entire Bluetooth pairing procedure.
- 3) After registration, you will have access to the on-line Febreze Store to purchase refills, get special offers and support in case of questions.
- 4) Any app instructions will be displayed on your Smartphone.



- 5) If Bluetooth wireless technology is activated on your device, the Bluetooth symbol on the radio transmission display illuminates. Once the device is paired, the Bluetooth symbol in the app and on the device flashes briefly.
- 6) Keep your Smartphone in close proximity (within 5m distance) when using it with the device. Make sure the Smartphone is safely positioned in a dry place.
- 7) Note: Your Smartphone must support Bluetooth 4.0 (or higher) / Bluetooth Smart in order to pair your device.
- 8) To disable / disconnect your Bluetooth connection::
  - Launch the **iOS Settings app** and select **Bluetooth** from the list
  - Tap the 'i' next to the device name, then tap on **Disconnect**
  - To disable Bluetooth on the device, press the grey BLE button underneath the device for 2 seconds

## D Nightlight function

- 1) The device provides coloured LEDs providing a night light function. The LEDs can be switched to multiple colours in the specific app menu.
- 2) To avoid too fast battery drain please connect the device to the charging base or initiate the timer function.




---

## USER MAINTENANCE and MOVING AND STORAGE

### A Maintaining proper use as intended

- 1) Your Device Model #4680 should only be used with model # 4660 charging base.
- 2) The charging base model #4660 should only be used with the supplied Class 2 power supply code/id 5210 or 492-5214 (US).
- 3) The Febreze fragrance refills are specifically designed and intended for use with your Device Model #4680.

### B After use

- 4) Turn off the appliance by pushing the on/off touch button. The device will power down. The refill can remain in the device.
- 5) If you plan to put the device into storage we would recommend inserting the storage seal back into the refill to avoid drying-out.

### C Cleaning the Device

- 1) Always unplug before cleaning. Never immerse the appliance in water.
- 2) Fragrance oils may collect on the device over time. To clean, remove device from outlet and wipe with clean, soft cloth.

### D User Maintenance

There are no user maintenance parts. Do not open device.

## **E Moving and Storage Instructions**

Keep the product in an upright position on flat surfaces. Do not turn upside down when a fragrance refill has been inserted, as the perfume will leak and cause potential damage to your surfaces.

## **E Guarantee**

We grant 2 years guarantee on the product commencing on the date of purchase. Within the guarantee period we will eliminate, free of charge, any defects in the device resulting from faults in materials or workmanship, either by repairing or replacing the complete device as we may choose.

This guarantee extends to every country where this device is supplied by P&G or its appointed distributor. This guarantee does not cover damage due to improper use, normal wear or use, especially regarding the refills, as well as, defects that have a negligible effect on the value or operation of the device.

The guarantee becomes void if repairs are undertaken by unauthorised persons and if original P&G parts are not used.

This appliance is equipped with a Bluetooth Smart approved radio module. Failure to establish a Bluetooth Smart connection to specific smart phones is not covered under the device guarantee, unless the Bluetooth radio module of this appliance is damaged.

The Bluetooth devices are warranted by their own manufacturers and not by Febreze. Febreze does not influence or make any recommendations to device manufacturers, and therefore Febreze does not assume any responsibility for the number of compatible devices with our Bluetooth systems.

Febreze reserves the right, without any prior notice, to make any technical modifications or changes to system implementation of device features, interface, and menu structure changes that are deemed necessary to ensure that Febreze systems function reliably.

To obtain service within the guarantee period, **please call the following number xxx-xxx-xxxx or email our customer service at xxxxxx.xx@pg.com.**

This guarantee in no way affects your rights under statutory law.

## **F Important information on Bluetooth® radio module**

- 1) Although all indicated functions on the Bluetooth device are supported, Febreze does not ensure 100% reliability in connection, and feature operation consistency.
- 2) Operation performance and connection reliability are direct consequences of each individual Bluetooth device, software version, as well as the operating system of those Bluetooth devices and company security regulations implemented on the device.
- 3) Febreze adheres to and strictly implements the Bluetooth standard by which Bluetooth devices can communicate and function in Febreze air fresheners. However, if device manufacturers fail to implement this standard, Bluetooth compatibility and features will be further compromised and the user may experience functional and feature-related issues.
- 4) Please note that the software on the Bluetooth device can significantly affect compatibility and operation.

## **G Warranty replacement refills**

The Febreze warranty will be voided if device damage is found to be attributed to the use of non-Febreze replacement refills.

- Febreze does not recommend the use of non Febreze replacement refills.
- Febreze has no control over the quality of non-Febreze replacement cartridges.
- Febreze cannot predict the long-term effect of non-Febreze replacement refills on the device.
- All Febreze replacement refills carry the Febreze logo and meet Febreze's high quality standards.
- Febreze does not sell replacement refills or device parts under any other brand name.

## TROUBLE SHOOTING

Problem	Possible Reason	Remedy
<b>Device</b>		
Device does not operate with original Febreze refill	1. Refill is not installed properly	1. Remove refill and reinstall; if remedy does not take place install a new/replacement refill.
	2. Refill runs dry	2. Replace with fresh refill
<b>Device</b>		
Device does not Turn On.	1. Device was not seated properly on the charging base and was not being charged.	1. Ensure the device is seated properly/flush onto the charging base and the power button will begin to pulse. Press and hold the Power Button for a full 2 seconds to turn the Device On.
	2. The Power Button was not pressed and held for a full 2 seconds.	2. Place device on charging base and press and hold the Power Button for a full 2 seconds to turn the Device On.
<b>Cartridge</b>		
Refill does not fit properly into the device	1. Refill is not compatible with your Febreze device	Original Febreze Refills are designed to fit only into Febreze devices
<b>App</b>		
Device does not operate with app	1. Febreze app is turned off	1. Turn on Febreze app
	2. Bluetooth is not activated on your Febreze device	2. Activate Bluetooth by pressing button on the underside of your device. Check for illuminated Bluetooth icon on front of your device.
	3. Bluetooth is not activated on your smartphone/tablet	3. Activate Bluetooth on your smartphone/tablet as described in your user manual
	3. Radio transmission is deactivated	3. Activate radio transmission by pressing the Bluetooth button (1) for ~2 seconds until the Bluetooth symbol (3) is turned on
	4. Bluetooth connection has been lost	4. Check if the device is on.
	5. Your smartphone or tablet does not support Bluetooth 4.0 or higher	5. Your smartphone or tablet must support Bluetooth 4.0 or higher in order to connect to your Febreze device