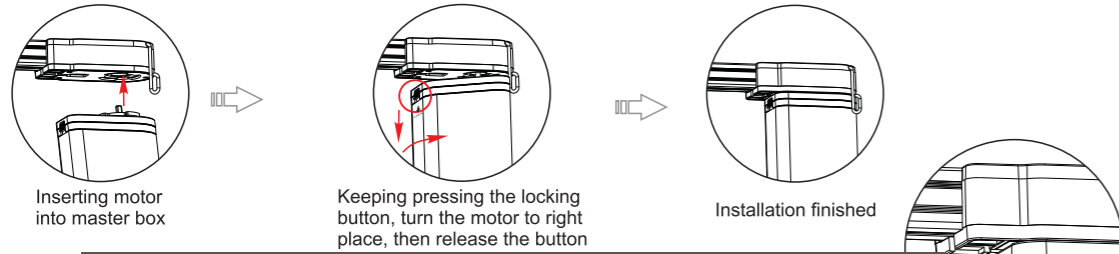


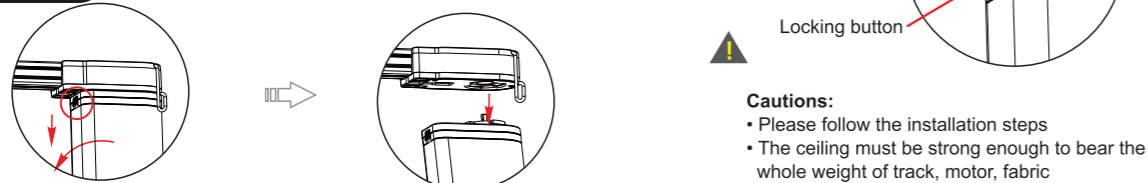
24V DC Flexible Drapery Motor Instruction

Installation

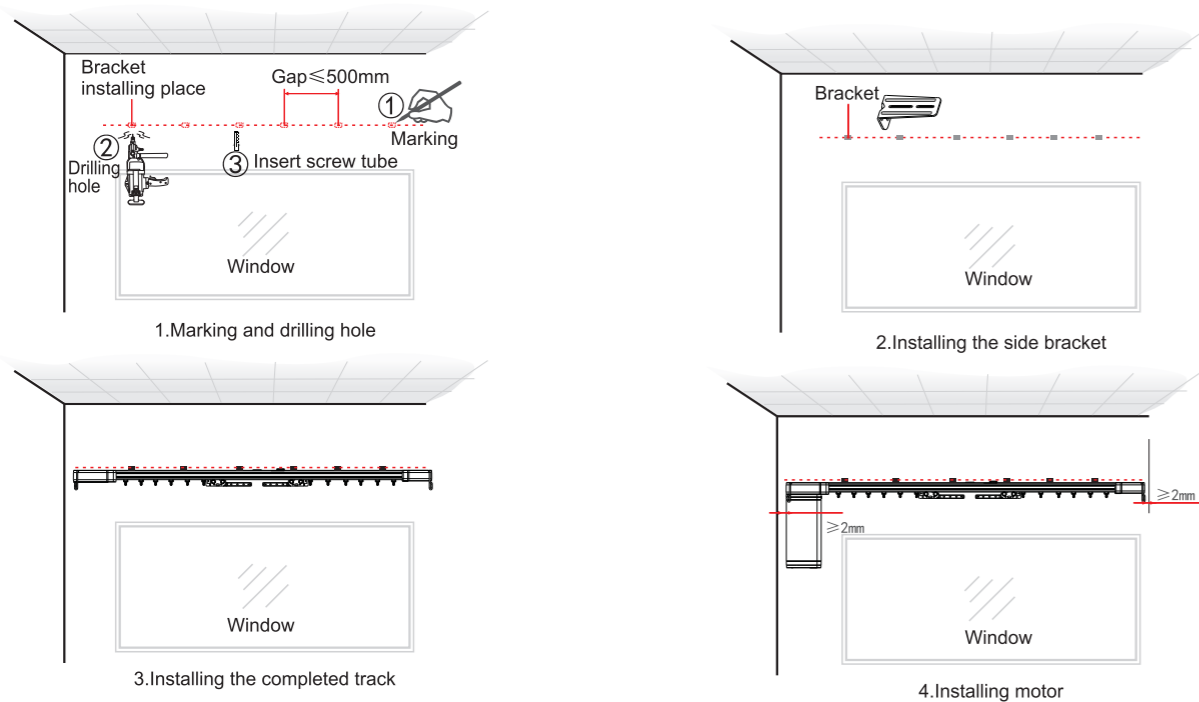
Motor installation



Motor removing



Side bracket installation - wall application

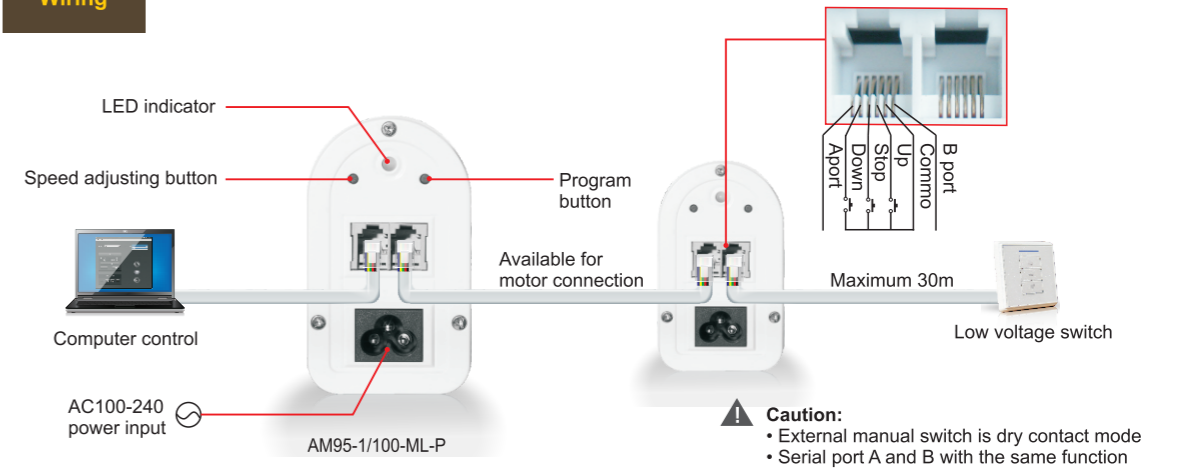


Remark:

This device complies with Part 15 of the FCC Rules. Operation is subject to the following two conditions: (1) this device may not cause harmful interference, and (2) this device must accept any interference received, including interference that may cause undesired operation. Changes or modifications not expressly approved by the party responsible for compliance could void the user's authority to operate the equipment. This device has been tested and found to comply with the limits for a Class B digital device, pursuant to part 15 of the FCC Rules. These limits are designed to provide reasonable protection against harmful interference in a residential installation. This equipment generates, uses and can radiate radio frequency energy and, if not installed and used in accordance with the instructions, may cause harmful interference to radio communications. However, there is no guarantee that interference will not occur in a particular installation. If this equipment does cause harmful interference to radio or television reception, which can be determined by turning the equipment off and on, the user is encouraged to try to correct the interference by one or more of the following measures:

- Reorient or relocate the receiving antenna.
- Increase the separation between the equipment and receiver.
- Connect the equipment into an outlet on a circuit different from that to which the receiver is connected.
- Consult the dealer or an experienced radio/TV technician for help.

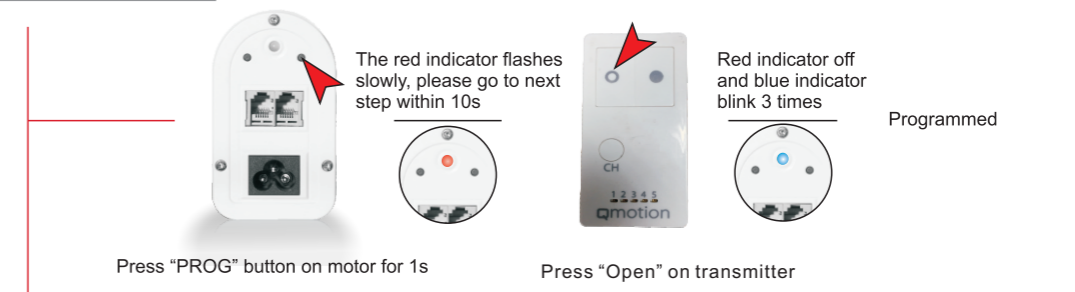
Wiring



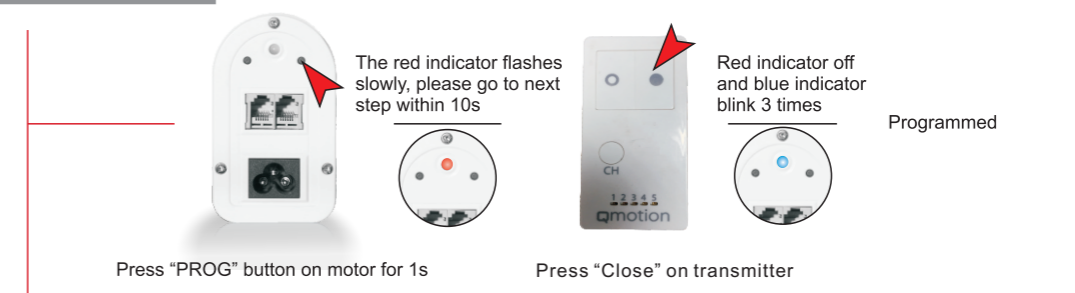
Operation instruction

- If the transmitter is multi-channel transmitter, please select channel firstly before operation
- 0.5s delay for UP/DOWN operation transfer, motor single working time max 5min

Programming



Delete Single Channel



Delete All Programming

- Press "STOP" on the programmed transmitter for 5s
- Press "PROG" on the back side of transmitter for 7s

Method 2

