

## How to install and use the radioMiro™ radio repeater

English  
Read and retain these instructions

Français

Español

### Ready?



For more information on designing, installing and using radioMiro™ systems, and for expert technical help, visit our web site at [www.passandseymour.com/miro](http://www.passandseymour.com/miro)

### Application

Use the radioMiro™ radio repeater in large installations, where the standard range (approximately 25m/80') is insufficient, or in buildings with difficult radio reception conditions.

The radio repeater will effectively double the transmit/receive range of radioMiro™ devices. In very large installations you may use up to five repeaters, strategically located.

The radio repeater also offers a great security feature – real life occupancy emulation. It records a one-week loop of real radioMiro™ network traffic, and can play it back when you're away from home – it'll look just like you're there.

Note that, while we definitely recommend the repeater for either or both of these functions, we recommend that you use only the number required for effective radio communication throughout the home. Using too many repeaters will not provide any additional benefit and may slow down network communication. For in-depth system design guidance, go to [www.passandseymour.com/miro](http://www.passandseymour.com/miro).

### Installation

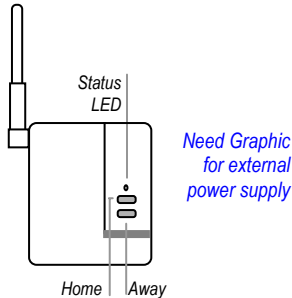


Figure 1

Locate the repeater in a central location, taking into consideration both the horizontal and vertical space in the home. In a 2-story plus basement home, a good position may be on the first floor atop a kitchen cabinet.

Do not locate close to any device that may cause interference – fluorescent light fixtures, TV sets, computers etc.

Plug the external power supply into a convenient 120 volt outlet, and connect the power cord to the repeater's power socket.

The status LED will light yellow, indicating that the unit is ready for configuration.

### Get Set...

### Configuration

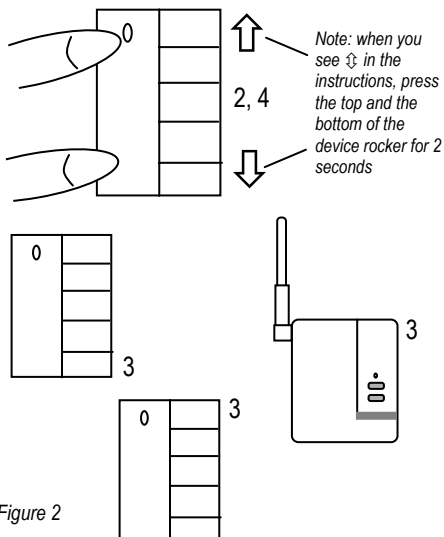


Figure 2

1. To prevent interference between neighboring systems, radioMiro™ devices must acquire a unique house ID before use. It's simple!

1. With all devices installed and energized, check that every radioMiro™ device is showing a yellow LED. If not, check that the circuit breaker is on and that the device is correctly installed.
2. All devices in a home must be 'bound' to the same home ID. For a new radioMiro™ installation, simultaneously press and hold the top and bottom (⇕) of any device paddle for 2 seconds. Its LED flashes yellow, indicating that it has acquired a unique House ID.
3. Check that all other radioMiro™ device LEDs are flashing green, indicating that they have acquired the same House ID.
4. Return to the first device, and press ⇕ again for 2 seconds. All device LEDs revert to green, indicating that house binding is complete.

Note: if you're adding the device to an existing radioMiro™ installation, simply press and hold ⇕ on any previously bound device for 2 seconds to start the procedure, verify that the newly added device LED is

flashing green, indicating that it has acquired the House ID. Press and hold ⌘ for 2 seconds again on the same previously installed device to terminate.

## Go!

## Use

### Radio Range Boost

Once the repeater is bound to the House, just leave it alone and it will receive and retransmit all **radioMiro™** network traffic for that House, effectively doubling the range of all House devices.

### Occupancy Emulation

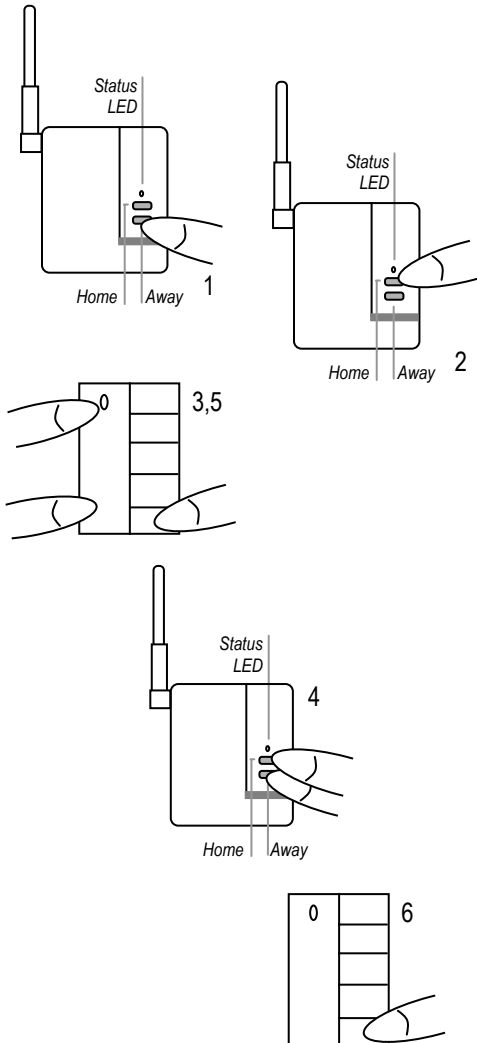
The repeater builds up a 7-day record of actual network traffic, and constantly keeps it up to date, to account for seasonal variations in lighting use.

1. Press the Away button, and one minute later (time to leave the house), the repeater will start playing back a real-life seven-day loop of **radioMiro™** commands. It will be just like the last week you spent at home.
2. When you come back, pressing Home, or any button on any **radioMiro™** device in the home, cancels occupancy emulation.

### Assigning Occupancy Emulation to a House Preset

Since the repeater may not be easy to reach, there's a better way to launch occupancy emulation – assign it to a House Preset.

3. From a house preset controller, press ⌘ for 2 seconds, followed by the preset button you want to use – we suggest the bottom one.
4. Now go to the repeater and press both buttons for 2 seconds, assigning it to the house preset. The repeater status LED blinks yellow. Important – one repeater only should be assigned to the house preset (if you have more than one repeater, use the most centrally located). If there are other devices in the house already assigned to the preset (blinking yellow), deselect them by pressing ⌘ for 2 seconds (they will blink green).
5. Return to the preset controller and press ⌘ for 2 seconds to terminate.
6. When you leave the house, press the house preset button you just recorded, and one minute later, occupancy emulation will begin.



## Cleaning

Clean only using a cloth dampened with water and a little mild detergent.

**Use of solvents or hydrocarbon-based cleaners may cause permanent damage.**

## Troubleshooting

**Problem:** I messed up the configuration, and I need to clear down and start again.

You can reset any **radioMiro™** device to factory default settings by pressing and holding for 10 seconds. The LED reverts to yellow, indicating that factory settings have been restored.

## FCC Notice

---

This equipment has been tested and found to comply with the limits for a Class B digital device, pursuant to part 15 of the FCC Rules. These limits are designed to provide reasonable protection against harmful interference in a residential installation. This equipment generates, uses and can radiate radio frequency energy and, if not installed and used in accordance with the instructions, may cause harmful interference to radio communications. However, there is no guarantee that interference will not occur in a particular installation. If this equipment does cause harmful interference to radio or television reception, which can be determined by turning the equipment off and on, the user is encouraged to try to correct the interference by one or more of the following measures:

- Reorient or relocate the receiving antenna.
- Increase the separation between the equipment and receiver.
- Connect the equipment into an outlet on a circuit different from that to which the receiver is connected.
- Consult the dealer or an experienced radio/TV technician for help.

**Caution:** Any changes or modifications to this device not explicitly approved by Pass & Seymour/Legrand could void your authority to operate this equipment.

---

## Lifetime Warranty

The device you have purchased is warranted under normal use against defects in workmanship and materials for as long as you own the device. If the device fails due to manufacturing defect during normal use, return the device for replacement to the store where purchased or send to: Pass & Seymour/Legrand, Inc., 50 Boyd Avenue, Solvay, NY 13209. All requests for replacement must include a dated sales receipt (legible copies acceptable). ALL OTHER WARRANTIES, INCLUDING BUT NOT LIMITED TO ANY WARRANTIES OF MERCHANTABILITY OR FITNESS FOR A PARTICULAR PURPOSE, ARE LIMITED TO A PERIOD OF TWO YEARS FROM THE DATE OF PURCHASE. YOUR SOLE AND EXCLUSIVE REMEDY AGAINST PASS & SEYMOUR/LEGRAND UNDER ANY WARRANTY SHALL BE THE EQUIVALENT REPLACEMENT OF THE DEVICE. IN NO EVENT SHALL ANY WARRANTY APPLY TO ANY DEFECT ARISING OUT OF ANY ALTERATION OF THE DEVICE, IMPROPER INSTALLATION, MISUSE, ABNORMAL USE OR NEGLIGENCE. IN NO EVENT SHALL PASS & SEYMOUR/LEGRAND BE LIABLE FOR LOST PROFITS, INDIRECT, SPECIAL, EXEMPLARY, INCIDENTAL OR CONSEQUENTIAL DAMAGES. Some states do not allow limitations of incidental or consequential damages. Some of the above limitations or exclusions may not apply to every purchaser.



**Miro™ is much more than lighting**

**control! For information on Miro™**

**wiring devices, decorative wall**

**plates, home networks and**

**home automation solutions, visit**

**our web site at**

**[www.passandseymour.com/miro](http://www.passandseymour.com/miro)**