

SWS™
Safety Warning System™
In communities where transmitters are located, the Safety Warning System™ displays over 60 text messages. When Safety Warning System is detected, the audio alert sounds like a geiger counter.

Safety Warning System Text Example:
Poor - Road - Surface.

NOTE: Not all areas have Safety Warning System™ transmitters.

POP™ MODE ALERTS

POP™ Mode Alerts
Because POP™ Mode radar utilizes the same K or Ka band frequencies, POP™ Mode Alerts will be displayed as regular radar alerts.



After the 3-second pulse alert, the standard alert pattern continues for as long as the signal is present.

It is important to respond promptly to a pulse alert, since warning time may be minimal.

When a pulse type transmission is detected, your Whistler detector sounds an urgent 3-second audio warning and the display shows:

Speed Radar Audio/Visual Alerts
When X, K, or Ka is detected, the band ID and signal strength is displayed. The audio alert is continuous and has a pattern like a geiger counter. The faster the beep, the closer or stronger the radar source.

Laser Audio/Visual Alerts
When a laser signal is detected the audio alert is continuous for a minimum of 3 seconds.

Pulse Protection®
Pulse (or instant-on) radar is more difficult to detect than conventional radar because it remains ‘off’ until activated to measure the speed of a targeted vehicle.

NOTE: The Display Shows:

Service Under Warranty
During the warranty period, defective units will be repaired without charge to the purchaser when returned with a dated store receipt to the address below. Units returned without a dated store receipt will be handled as described in section “**Service Out-Of-Warranty.**”

VG-2 ALERTS
VG-2 Audio/Visual Alerts
NOTE: You must turn this feature on before it will detect VG-2.

When a VG-2 signal is detected, the detector “hides” its own radiated signal and becomes undetectable by the VG-2. Every 30 seconds, the detector checks for a VG-2 signal. If a VG-2 signal is still present, the unit continues to hide and repeats the VG-2 alert. If no signal is detected, two beeps are provided, indicating an “all clear” condition. During a VG-2 Alert X, K, and Ka band signals cannot be received.

ALERT PRIORITY
When two or more signals are received at the same time, the alert priority is:
1. Laser
2. VG-2
3. Speed Radar
4. Safety Warning System
Example: If X band is alerting, then suddenly a VG-2 signal is detected, the VG-2 warning will override the X band alert.

RESET FEATURES
All user features can be reset to factory settings.
• Unplug the Power Cord from the unit.
• Press and hold the Quiet button.
• Plug the Power Cord into the unit.
• Wait for 2 beeps.
• Release the Quiet button.
• Unit is now reset to the following features and settings.
Default factory settings are:
1. HIGHWAY Mode
2. Dim/Dark Mode to full illumination of display

WARRANTY INFORMATION
Due to the specialized equipment necessary for testing a Laser-Radar receiver, there are no authorized service stations for Whistler brand detectors other than Whistler.

When returning a unit for service, please follow these instructions:

1. Ship the unit in the original carton or in a suitable sturdy equivalent, fully insured, with return receipt requested to:

Whistler Repair Dept.
1412 South 1st St.
Rogers, AR. 72756

Please allow 3 weeks turnaround time.

IMPORTANT: Whistler will not assume responsibility for loss or damage incurred in shipping. Therefore, please ship your unit insured with return receipt requested. **CODs will not be accepted!**

2. Include with your unit the following information, clearly printed:

- Your name and street address (for shipping via UPS), a daytime telephone number and an email address, if applicable.
- A detailed description of the problem (e.g., “Unit performs self-test but does not respond to radar”).
- A copy of your dated store receipt or bill of sale.

3. Be certain your unit is returned with its serial number. For reference, please write your unit’s serial number in the space provided on the Accessory page of this guide.

Units without serial numbers are not covered under warranty.

RESET FEATURES
3. Auto Quiet Mode OFF
4. VG-2 Detection Mode OFF
5. SWS OFF
6. Vehicle Battery Saver OFF
7. Full Power Up sequence
8. Default TONE 3
9. POP OFF
10. Voice EN
11. LED Periscope to BLINK
12. TFSR OFF
13. FDSR OFF

TROUBLESHOOTING

Your Whistler detector is expertly engineered and designed to exacting quality standards to provide you with reliable, trouble-free operation. If your unit has been correctly installed following the guidelines in this guide, but is not operating optimally, please refer to the troubleshooting guide below.

PROBLEM: Unit does not turn on.
• Check the fuse in the plug; replace if necessary with a 2 amp, 3AG type.
• Check the fuse for lighter socket; replace if necessary.
• Make sure the lighter socket is clean.

PROBLEM: Unit alarms when vehicle hits bumps.
• Check for a loose lighter socket; tighten and clean.
• Check the connections at both ends of the power cord. Substitute another cord to determine if the cord is defective. Return the defective cord to the factory.

WARRANTY INFORMATION
IMPORTANT: To validate that your unit is within the warranty period, make sure you keep a copy of your dated store receipt. You may register your warranty online at www.whistlergroup.com, however, for warranty verification purposes, a copy of your dated store receipt must accompany any unit sent in for warranty work.

Service Out-of-Warranty
Units will be repaired at “out-of-warranty” service rates when:
• The unit’s original warranty has expired.
• A dated store receipt is not supplied.
• The unit has been returned without its serial number.
• The unit has been abused, modified, installed improperly, or had its housing removed.

The minimum out-of-warranty service fee for your Whistler detector is \$55.00 (U.S.). If you require out-of-warranty service, please return your unit as outlined in the section “Service Under Warranty” along with a certified check or money order. Payment may also be made by MasterCard, VISA or American Express; **personal checks are not accepted.**

In the event repairs cannot be covered by the minimum \$55.00 service fee, you will be contacted by a Whistler technical service specialist who will outline options available to you.
If you elect not to have your unit repaired, it will be returned to you along with your certified check or money order.

IMPORTANT: When returning your unit for service, be certain to include a daytime telephone number and an email address (if applicable).

TROUBLESHOOTING
PROBLEM: Audio alerts are not loud enough.
• Cancel Auto Quiet Mode or City Mode.
• Check audio level setting.

If difficulties occur which cannot be solved by information in this Troubleshooting Guide, please call Whistler Customer Service at 1-800-531-0004 or visit our FAQ page at www.whistlergroup.com, before returning your unit for service.

CARE AND MAINTENANCE

Care And Maintenance
During the summer months, avoid prolonged exposure to direct sunlight by removing your unit from the dash when your vehicle is parked for an extended period of time. Do not spray water, cleaners, or polishes directly onto the unit. The spray may penetrate through the openings and damage the unit. Also, do not use any abrasive cleaners on the unit’s exterior.

ARE DETECTORS LEGAL?
In Most States YES!
Laser-Radar detectors are legal in every state (except Virginia and Washington, D.C., which have local regulations restricting the use of radar receivers in any vehicle) when used in automobiles or light trucks (under 10,000 lbs.).

The Federal Highway Administration (FHWA) issued a regulation, effective January, 1994 which prohibits radar and laser detector use in vehicles over 10,000 lbs. Prior to the FHWA regulation, laws existed in New York restricting the use of radar detectors in trucks over 18,000 lbs. and in Illinois in trucks over 26,000 lbs.

WARRANTY INFORMATION
Customer Service
If you have questions concerning the operation of your Whistler detector, or require service during or after the warranty period, please call Customer Service at: **1-800-531-0004**
Representatives are available to answer your questions Monday - Friday from 8:00 a.m. to 5:00 p.m. (CT) or visit the FAQ at www.whistlergroup.com.

SPECIFICATIONS
Laser Wavelength:
905 ± 50 nanometers (nm)
Radar Frequencies:
10.500 - 10.550 GHz (X Band)
24.050 - 24.250 GHz (K Band)
33.400 - 36.000 GHz (Ka Superwideband)

Operating Temperature Range:
-10° C to +70° C (+14° F to +158° F)
Power Requirements:
Operational 12 to 15 volts DC, 250mA nominal
Vehicle Battery Saver, 30mA nominal.

Patents can be viewed here:
www.whistlergroup.com/pat
POP™ Mode is a trademark of MPH Industries, Inc.
SWS™ is a trademark of Safety Warning System L.C.

Specifications are subject to change without notice.

FCC INFORMATION
FCC ID : HSXWH23
This device complies with part 15 of the FCC Rules. Operation is subject to the following two conditions: (1) this device may not cause harmful interference, and (2) this device must accept any interference received, including interference that may cause undesired operation.

IMPORTANT: FCC (Federal Communications Commission) requirements state that changes or modifications not expressly approved by Whistler could void the user’s authority to operate the equipment.

SPEED MONITORING

Radar Facts
A radar gun operates by transmitting radio waves at certain frequencies which reflect off objects and are picked up by the radar gun’s receiving section. When a radar beam reflects off a moving target, a measurable frequency shift occurs. The radar unit converts this shift into miles per hour to determine your vehicle’s speed. Currently, the FCC permits operation of traffic radar guns at X Band (10.500 - 10.550 GHz), K Band (24.050 - 24.250 GHz), and Ka Band (33.400 - 36.000 GHz).
NOTE: A radar detector will only alarm if an officer is transmitting on any one of the above radar bands.

POP™ Mode
POP™ Mode is a feature on some radar guns operating on K and Ka bands. When the gun is in POP™ Mode and activated, a brief burst of energy, less than 1/15 of a second, is transmitted and the vehicle’s speed is quickly acquired. A detector without POP™ Mode detection capability cannot respond to this brief transmission.

ACCESSORIES
These and other accessories can be ordered directly from Whistler by calling **1-800-531-0004** or visiting our online store at www.whistlergroup.com.

Order #	Description	Price
202151	Windshield Bracket Kit	\$9.95
206552	Power Cord (5')	\$14.95
206880	Hardwire Kit (10') (for wiring to fuse box)	\$9.95
206666	Modular* Cord Package (includes coiled an straight cords, and power adapter)	\$17.95
159032	Package of 8 suction Cups	\$2.95
402080	Non Skid Dash Pad	\$6.95

***Modular: Interconnecting pieces cord and plug. Shipping and handling (per order) \$5.00. Prices are subject to change without notice.**

write serial number in the space provided
27

SPEED MONITORING
Laser Facts
It’s well documented that many radar guns cannot reliably provide the speed of a targeted vehicle that is traveling in a group of vehicles. In contrast, a laser gun can target a specific vehicle out of a line of traffic and determine its speed. The advantage of laser over radar in terms of target identification is the result of the laser gun’s narrow beam. A radar gun’s transmission can cover more than a four-lane highway at a distance of 1,000 feet, compared with a laser gun’s transmission which covers about 3 feet at the same distance. For best protection, keep these points in mind:
• Because the vehicle’s license plate or headlights are the laser gun’s primary targets, mounting the Whistler detector on the dashboard can improve laser detection at short range.
• Do not follow closely behind any vehicle. If you can’t see past a vehicle ahead of you, chances are your detector won’t either.
• The receiving range of your laser detector will not be the same as a radar detector. Laser guns are most often used at short range.

Whistler Laser-Radar detectors receive all current laser guns which operate at a laser wavelength of 905 +/- 50nm.

Laser Tips
If you are the targeted vehicle, a laser gun can often determine your speed within a few seconds after you receive an alert. In this situation, there is generally no time to safely adjust your speed. However, if you are traveling near or

USER GUIDE

Z-19R+
High Performance
LASER-RADAR
DETECTOR

The Whistler Group Corporate Headquarters
1716 Commerce Dr. Ste. 8
Bentonville, AR 72712
Tel 479.273.6012 • Fax 479.273.2927

Whistler Customer Return Center
1412 South 1st St. • Rogers, AR 72756
Customer Service Tel 800.531.0004

www.whistlergroup.com
P/N 260038-1 03G16
© 2016 The Whistler Group, Inc.



Dear Whistler Customer,

If you have questions concerning the operation of this Whistler product please call:

Customer Service
1-800-531-0004
Monday - Friday • 8:00 am - 5:00 pm CT
or visit our website
www.whistlergroup.com

Please keep the receipt in a safe place. You may register your product online at **www.whistlergroup.com**. For warranty verification purposes, a copy of your dated store receipt must still accompany any unit sent in for warranty work. If the unit is returned without a dated store receipt, an out-of-warranty service charge applies. Note: Your warranty period begins at the time of purchase. The warranty is validated only by the dated store receipt! Please record the serial number of the unit in the space provided in the accessories section of the guide.

To fully acquaint yourself with the operation of your Whistler detector and to better understand the differences between detecting radar, laser, and safety radar signals, we recommend reading this entire guide or visiting our FAQ. page on our website **www.whistlergroup.com**

Enjoy your Whistler detector and please drive safely.

Sincerely,
The Whistler Group, Inc.

OPERATION

Power On Self Test & Volume

Each time your Whistler detector is turned on, an automatic self-test sequence confirms that the speaker and visual displays are functional. To increase the volume, continue turning the volume knob.

Dim/Dark Mode

Dim/Dark Mode reduces the illumination of the display.

- Press the Dark button to reduce illumination to a Dim setting.
- Press the Dark button a second time to engage Dark Mode. The display illumination is further reduced.

Dim or Dark Mode can be engaged during an alert. In Dark Mode, the display goes dark for as long as a signal is being detected and for 20 seconds after, then the display returns to the dimmer setting.

- Press the Dark button a third time to restore full illumination to the display.

Setting Saver

Setting Saver stores your personalized settings so that when the detector is turned off and then on again, you do not have to re-enter them.

Feature Engaged Confirmation

Each time a button is pressed, one beep confirms feature “on”, two beeps confirm feature “off”.

Model Features Summary.....	3-4
Installation.....	5-7
• Mounting Guidelines	
• Windshield Mounting	
• Power Connection and Fuse Replacement	
Operation.....	7-14
• Power On Self Test & Volume	
• Dim/Dark Mode	
• Setting Saver	
• Feature Engaged Confirmation	
• Integrated Real Voice®	
• Quiet/Auto Quiet Mode	
• Alert Periscopes	
• City/City 1/ City 2 Mode	
• Highway Mode	
• Teach/Tutorial Mode	
• VG-2 Mode	
• Vehicle Battery Saver Mode	
• FDSR/TFSR	
• Option Select Mode	
• Stay Alert Feature	
Safety Warning System™.....	15
POP™ Mode Alerts.....	15
Laser/Radar Alerts.....	16
• Speed Radar Audio/Visual Alerts	
• Laser Audio/Visual Alerts	
• Pulse Protection®	
VG-2 Alerts.....	17
• Alert Priority	
Reset Features.....	17-18
Troubleshooting Guide.....	18-19
Care and Maintenance.....	19
Are Detectors Legal?.....	19
FCC Information.....	20
Speed Monitoring.....	20-23
• Radar Facts	
• POP™ Mode	
• Laser Facts	
• Laser Tips	
• Other Speed Detection Systems	
• Radar Detector Detectors	
Warranty Information.....	23-26
Specifications.....	26
Accessories.....	27

OPERATION

Integrated Real Voice®

When selected, Real Voice® will be used to articulate the following:

- Band Identification
- Safety Warning System messages
- Feature Selection

NOTE: In certain cases, the voice message does not replicate the text message.

Quiet Mode

Quiet mode cancels audio during an alert and any new alert within 20 seconds. After 20 seconds, approximately 2 beeps are provided on any new alert and unit then remains quiet.

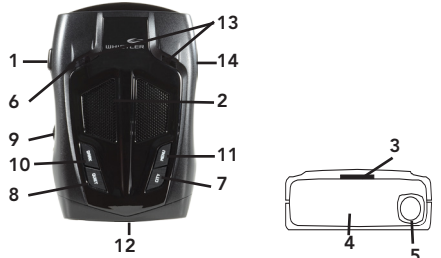
- Press Quiet to cancel the audio.
- Press Quiet a second time during an alert to restore the standard audio alert pattern; or turn the unit off, then on.

Auto Quiet Mode

Pressing QUIET before a radar signal is detected provides an alternate alert pattern, consisting of four beeps (indicating X, K, Ka or Safety Warning System) followed by clicking. The clicking will continue for as long as the detected signal is present or any new signal is detected within 20 seconds, becoming more rapid as the strength of the signal increases.

- Press Quiet (before a signal is detected) to engage Auto Quiet.
- Once the Auto Quiet mode is engaged, you may cancel the audio alarm by pressing Quiet.
- Press Quiet (when the unit is not alarming) to cancel Auto Quiet mode.

WHISTLER FEATURES



Features

- Total Band Protection™
- OLED Text Display
- Detects POP™ Mode
- 360° Maxx Coverage
- 3 City Modes/ Highway Mode
- Quiet/Auto Quiet Mode
- Dim/Dark Mode
- Real Voice®
- Stay Alert™
- Setting Saver
- Selectable Vehicle Battery Saver™
- Safety Warning System™
- Alert Priority
- Alert Periscopes
- Total Laser Detection
- Traffic Flow Signal Rejection
- Field Disturbance Sensor Rejection
- High Gain Lens
- VG-2 Detection

OPERATION

Alert Periscopes

Whistler's new Alert Periscopes provide an added attention getting visual alert. The two extra LEDs flash on and off when the unit alarms to provide a unique visual alert. This alert can be programmed, through the Option Select Mode to: 1. flash for all alarms, 2. remain on, or 3. turn LEDs off completely.

City/City 1/City 2 Mode

Whistler's Three Stage City Mode is designed to reduce the annoyance of automatic door openers, intrusion alarms and other devices which share frequencies with police radar. Generally, X band is used for these devices.

- Press City button to cancel Highway Mode and engage City Mode.
- Press City button again to enter City 1 Mode
- Press City button again to enter City 2 Mode
- Press City button a fourth time to cancel City 2 Mode and returns the unit to Highway Mode.

In City Mode, weak speed/safety radar signals give an initial alarm of two beeps, and then remains quiet until the signal becomes very strong. When the signal strength increases, two additional beeps are provided. City 1 and City 2 Modes operate the same as Highway Mode, but in City 1 Mode, only the X band is reported at high levels. In City 2 Mode, X-band is not detected.

CAUTION: Some towns/small cities may still be using X band radar. City Modes do not change the audio alert for laser or VG-2.

FEATURE DESCRIPTIONS

- Bracket Release Button** - provides quic and easy release of the mounting bracket.
- Speaker** - provides distinct audio warnings for X, K, Ka band radar, safety warning system, laser and VG-2.
- Mounting Bracket Location** - slot holds mounting bracket firmly.
- Radar Antenna** - compact, high-efficiency antenna receives radar signals.
- Front Laser** - high gain optical lens provides increased sensitivity and field of view for leading-edge laser detection.
- Rear Laser** - an integrated optical waveguide provides superior detection of laser signals transmitted from behind.
- City Button** - reduces the annoyance of false alerts typically encountered in urban driving areas.
- Quiet Button** - pressing QUIET before a signal is detected engages Auto Quiet Mode which automatically reduces the audio level after the initial warning to a low audio level setting. Pressing QUIET during a radar/laser encounter silences audio alerts, while allowing visual alerts to keep you informed.
- Power / Volume Control** - turns unit on/off and adjusts audio level.
- Dim / Dark** - engages Dim/Dark modes.
- Menu Button** - enters Option Select Mode.
- Text Display** - provides distinct visual confirmation of signals detected, signal strength, and indicates engaged modes of operation.
- Alert Periscopes** - provide added visual alerts of threats ahead.
- Power Jack** - Provides connection for the power cord.

OPERATION

Highway Mode

Highway mode provides full audio warnings any time radar (X, K, Ka, Safety Warning System) or laser signals are detected, and is recommended for open road driving.

For more information on City and Highway modes, please visit our FAQ page on our website: **www.whistlergroup.com**

Teach/Tutorial Mode

Provides simulated alerts for each type of signal.

- Press City and Quiet buttons simultaneously
- Display Shows: **TEACH**
- Press Dark button to exit.

VG-2 Mode

See Option Select Mode to turn this feature on/ off. When a VG-2 signal is detected, the VG-2 alert is sounded and the display flashes “VG-2”. After 3 seconds the audio is canceled and the display no longer flashes. This cycle is repeated if the VG-2 signal is detected again.

During the period a VG-2 signal is detected, a radar signal cannot be detected. However, because the VG-2 alert has confirmed that a patrol car is nearby, you are already aware of the potential for speed monitoring and can adjust your speed accordingly. Laser detection is not affected while a VG-2 signal is detected.

Vehicle Battery Saver Mode

The Vehicle Battery Saver Mode when selected automatically shuts off the detector after 3 hrs. The timer is reset if the detector is turned off, unplugged or any button is pressed before the timer has expired. The detector will alert you with an audible a and visual warning before it shuts off. During this

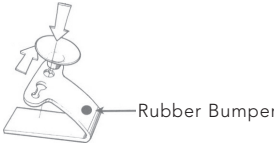
INSTALLATION

Mounting Guidelines

- Mount the unit as low as possible near the center of the windshield.
- Do not mount the unit behind wipers, ornaments, mirrored sunscreens, etc. These obstructions have metal surfaces which can affect radar and laser signals and reduce critical warning time. (Regular tinted glass does not affect reception).
- Some windshields have an Instaclear™ or Electriclear™ type coating, which affect radar signals. Consult your dealer or the user guide supplied with your vehicle to determine if your windshield has this coating.
- Avoid placing the unit in direct contact with the windshield.
- To reduce the possibility of theft, conceal the unit when not in use.

Windshield Mounting

- Install the two suction cups and rubber bumper onto the bracket by fitting them into their holes.
- Press the suction cups onto the windshield at the location you have chosen.



OPERATION

warning, you can momentarily reset the timer by pressing any button. If the unit has automatically turned off, press any button to turn the unit back on. Refer to “Option Select Mode” for instructions to activate battery saver mode feature.

Field Disturbance Sensor Rejection (FDSR) Traffic Flow Sensor Rejection (TFSR)

Recently many new products that operate on police radar frequencies have been causing nuisance alerts to radar detectors. These radar based sensors are installed alongside the Highway and more recently on vehicles used as lane change assist / blind spot detectors / collision avoidance systems. **TFSR** when turned ON is designed to eliminate alerts from specific Traffic Flow sensors. **FDSR** when turned ON is designed to identify all radar based collision avoidance systems that operate within the same band as police radar and provide a brief less intrusive alert to keep you informed and aware. A signal strength indicator will help determine your proximity to the source without the continued annoyance of audio.

We suggest you turn FDSR ON if you are experiencing excessive random false alerts when behind select vehicles.

Option Select Mode

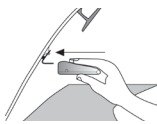
Entering Option Select Mode allows you to customize options such as Tone Select, Abbreviated Power Up Sequence, and VG-2 Mode. Press the Menu button to enter Option Select Mode. When selecting options, the Dark or Quiet buttons must be pressed within 20 seconds or Option Select Mode will automatically be exited.

NOTE: To exit Option Select Mode press and hold the menu button.

INSTALLATION

IMPORTANT: Some newer cars have a plastic safety coating on the inside of the windshield. The windshield bracket may leave permanent marks on this type of surface. To find out if your vehicle has this type of windshield, check the vehicle's user guide or ask your dealer. We recommend that you do not leave the suction cup bracket on the window in direct sunlight. If the detector is removed, this may cause blistering of the dash in some vehicles.

- Slide the detector onto the bracket until it locks into place.
- If necessary, the unit may be leveled by bending the windshield bracket. Press the bracket release button and remove the detector before bending.



IMPORTANT: Make sure the unit is level

Windshield Mounting

OPERATION

Feature	Display Shows	To Change D=Dark / Q=Quiet	Option
TONE	TONE 3	D or Q to Select	Tone 1, 2, 3 (3 Different Tone Patterns)
TEST	TEST YES	D = YES Q = OFF	X, K, Ka Audio Tones One Beep During Power Up
VG-2	VG-2 OFF	D = ON Q = OFF	VG-2 = ON VG-2 = OFF (default)
SWS™	SWS OFF	D = ON Q = OFF	SWS™ ON SWS™ OFF (default)
POP™	POP OFF	D = ON Q = OFF	POP™ = ON POP™ = OFF (default)
ALERT PERI-SCOPES	LED BLNK	D or Q to Select	Alert Periscopes ON, OFF or Blinking (default)
VOICE	VOICE EN	D or Q to Select	VOICE EN (English, default) VOICE SP (Spanish) VOICE N = OFF
BATTERY SAVER	B SVROFF	D = ON Q = OFF	BATTERY SAVER = ON BATTERY SAVER = OFF (default)
TFSR	TFSR OFF	D = ON Q = OF	TFSR = ON TFSR = OFF (default)
FDSR	FDSR OFF	D = ON Q = OFF Both D & Q	FDSR = ON FDSR = OFF (default) FDSr = FDSR, no Audio

INSTALLATION

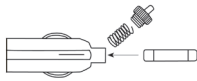
Power Cord Connection

- Plug the small end of the power cord into the unit's power jack.
- Plug the large end into the vehicle's cigarette lighter socket.

NOTE: Cord fits tightly into detector. When installing the cord, expect some resistance.

Fuse Replacement

The lighter socket plug is equipped with a replaceable 2 amp, 3AG fuse located behind the silver tip. To replace the fuse, carefully unscrew the tip of the plug.



IMPORTANT: Unscrew slowly. The tip contains a spring which may fly out when disassembling. Insert the new fuse with the spring and screw on the tip. With use, screw cap on plug may loosen. Retighten occasionally.

OPERATION

Stay Alert Feature

The Stay Alert Feature is designed to test a driver's alertness. To engage (when the unit is not alarming) :

- Press and hold the City button for approximately 2 seconds. Release the button during or immediately after the alert is given.

Display shows: **RU ALERT**

Within 30-60 seconds, two beeps are sounded; to show alertness, the driver must press either the City, Menu, or Quiet buttons within 3-5 seconds. If a button is pressed within 3-5 seconds, the cycle is repeated.

If a button is not pressed within 3-5 seconds, an alarm sounds and the display shows: **GET REST**

- Press the Dark button to exit the Stay Alert feature.

WARNING!!! Stay Alert is NOT intended as a substitute for adequate rest. You should NOT operate a vehicle if you are drowsy. During extended periods of vehicle operation, you should take frequent breaks. Improper reliance on the Stay Alert feature may result in vehicle damage, personal injury or death. **NEVER OPERATE A VEHICLE IF YOU ARE DROWSY.**