

MSBT01 USER'S MANU

Welcome

Thank you for purchasing this BLUETOOTH Wireless Optical Mouse. Utilizing the latest wireless technology. This mouse can work from any directions or angles even when objects hinder between your mouse & your BLUETOOTH enabled P.C., You can locate the device freely and enjoy its convenience. And the working range between the mouse and your P.C. are 10 meters.

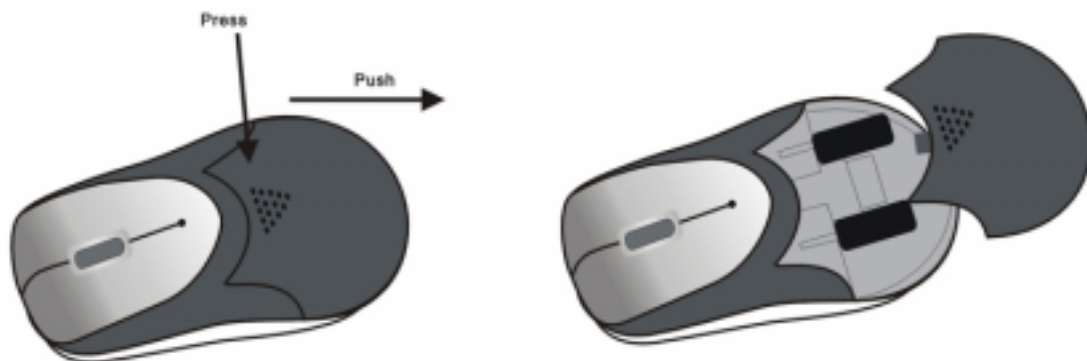
Install your BLUETOOTH wireless mouse

Hardware Installation

Installing batteries

1. Remove the battery cover from the bottom of your mouse
2. Insert two AAA Alkaline batteries into the battery compartment.
3. Replace the cover carefully.

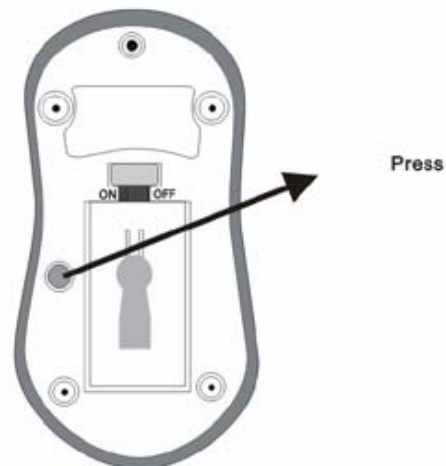
Once the battery is placed correctly in the mouse, the optical LED located at the mouse bottom will light up.



PAIRING WITH YOUR P.C. (or BLUETOOTH Dongle)

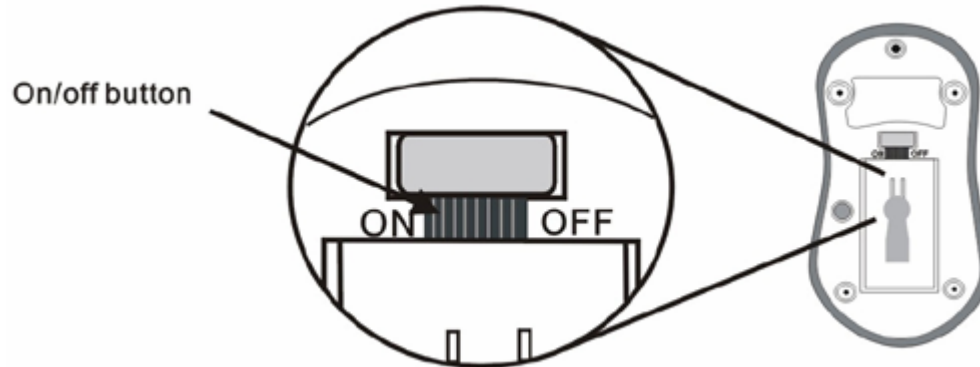
Prior to using your BLUETOOTH mouse for the first time, you MUST pair it with another BLUETOOTH device, such as a BLUETOOTH enabled P.C.. The Bluetooth connection between the mouse and your P.C. can be established by setting up a paired link. With a paired link, the P.C. remembers the mouse's ID, and these 2 items are then 'paired' together – eliminating the need to repeat the set up process with future use. Only paired devices can utilize all the functions of the mouse. The information below describes pairing instructions for a typical device. For specific instructions, refer to your P.C. user guide.

1. Press the underneath button of the mouse, then the green LED is turned on, and mouse is ready to be pairing with your P.C.
2. Select the BLUETOOTH function on your P.C., and following the instructions of user's guide to pair the mouse with your P.C..
3. Once the mouse has been paired with your P.C., then the green LED of the mouse will be turned off, and then the mouse is ready to be used with your P.C..



Power on-off function

This ON/OFF function is designed to save battery life. When mouse is not in use, you may turn the battery switch off



Important Note

- Please avoid your BLUETOOTH optical mouse to work on a metal surface. Metals such as iron, aluminum or copper shield the radio frequency transmission and may slow down the response of the mouse or cause the mouse to fail temporarily.
- This BLUETOOTH mouse will enter power saving mode automatically and if you don't move the mouse for over 10 minutes then you may have to move the mouse a little bit to re-start working
- Never use the BLUETOOTH mouse on a glass or mirrored surface
- Always use Alkaline batteries ONLY. Do not mix used and new batteries in one mouse.
- Using light color mouse pad is recommended.

Federal Communications Commission (FCC) Statement

15.21

You are cautioned that changes or modifications not expressly approved by the part responsible for compliance could void the user's authority to operate the equipment.

15.105(b)

This equipment has been tested and found to comply with the limits for a Class B digital device, pursuant to part 15 of the FCC rules. These limits are designed to provide reasonable protection against harmful interference in a residential installation. This equipment generates, uses and can radiate radio frequency energy and, if not installed and used in accordance with the instructions, may cause harmful interference to radio communications. However, there is no guarantee that interference will not occur in a particular installation. If this equipment does cause harmful interference to radio or television reception, which can be determined by turning the equipment off and on, the user is encouraged to try to correct the interference by one or more of the following measures:

- Reorient or relocate the receiving antenna.
- Increase the separation between the equipment and receiver.
- Connect the equipment into an outlet on a circuit different from that to which the receiver is connected.
- Consult the dealer or an experienced radio/TV technician for help.

Operation is subject to the following two conditions:

- 1) this device may not cause interference and
- 2) this device must accept any interference, including interference that may cause undesired operation of the device.

FCC RF Radiation Exposure Statement:

This equipment complies with FCC radiation exposure limits set forth for an uncontrolled environment. End users must follow the specific operating instructions for satisfying RF exposure compliance. This transmitter must not be co-located or operating in conjunction with any other antenna or transmitter.