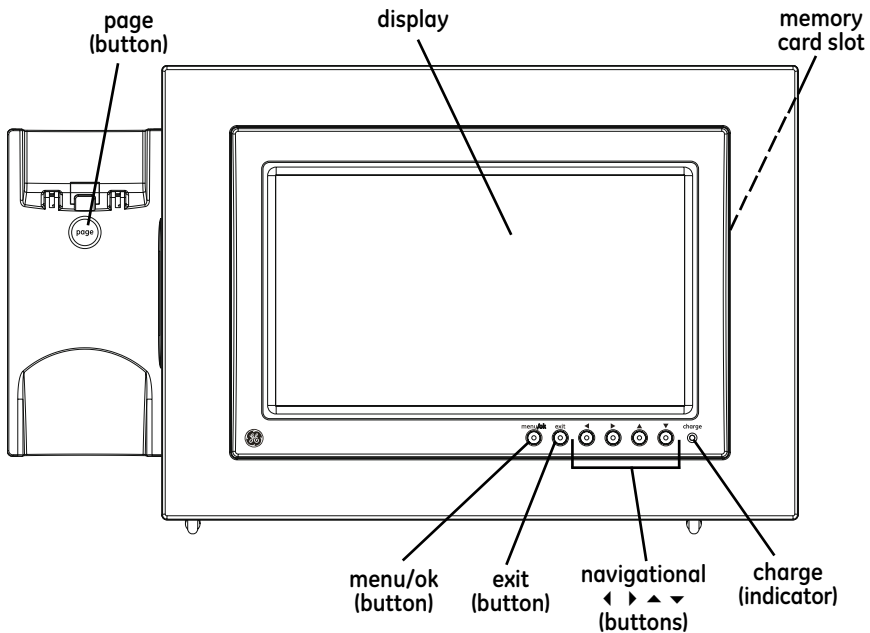


Base Layout



Installing the Phone

Installing the Handset Battery

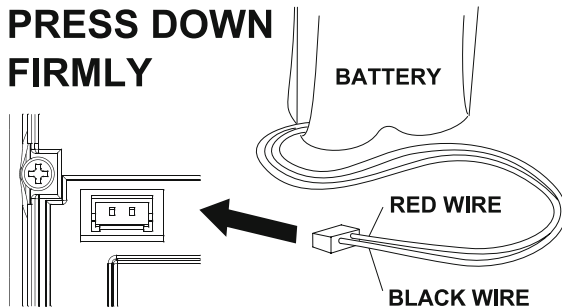
NOTE: You must connect the handset battery before use.



CAUTION: To reduce the risk of fire or personal injury, use only the Thomson Inc. approved Nickel-metal Hydride (Ni-MH) battery model 5-2734, that is compatible with this unit.

1. Locate the battery which is packaged inside a plastic bag and is separate from the handset.
2. Locate the battery compartment on the back of the handset.
3. Plug the battery pack cord into the jack inside the compartment.

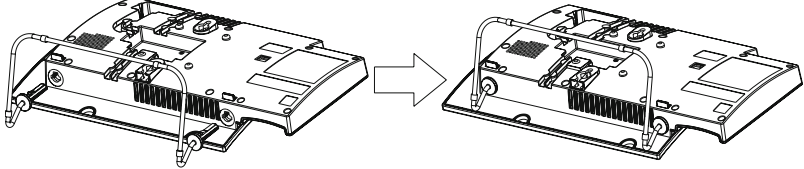
NOTE: To ensure proper battery installation, the connector is keyed and can be inserted only one way.



4. Insert the battery pack.
5. Close the battery compartment by placing the handset back cover slightly higher than the handset, then slide the cover down into position.

Installing the Base/Photo Frame

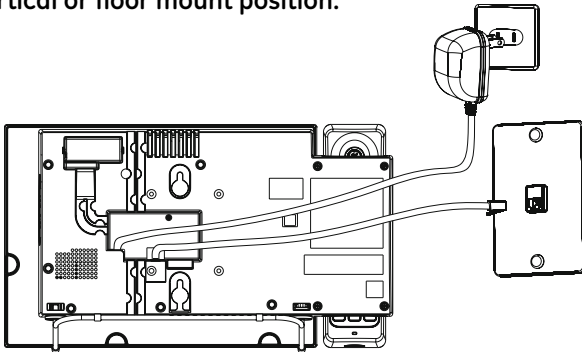
1. Insert the legs of the metal stand into the holes on the bottom of the base, push until they snap into place.



2. Choose an area near an electrical outlet and a telephone wall jack (RJ11C), and place your cordless telephone on a level surface, such as a desktop or tabletop, or you may mount it on the wall.
3. Connect one end of the telephone line cord into the TEL LINE jack on the back of the base and the other end into a modular jack.
4. Connect the AC power adaptor into the electrical outlet and the DC connector into the jack on the back of the base.



CAUTION: To reduce risk of personal injury, fire, or damage use only the 5-2833 power adaptor listed in the user's guide. This power adaptor is intended to be correctly orientated in a vertical or floor mount position.

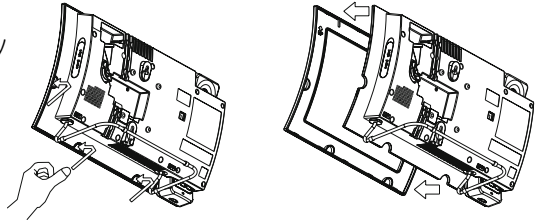


5. Place the handset in the base cradle. The charge indicator illuminates verifying the battery is charging.
Allow the phone to charge for 14 hours prior to first use. If you don't properly charge the phone, battery performance is compromised.

Changing the Photo Frame

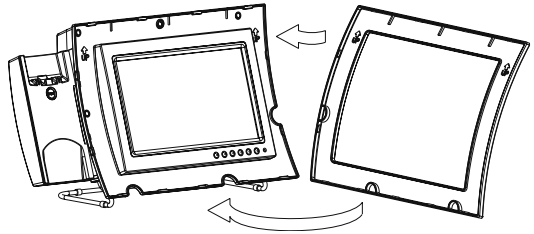
Detaching the Photo Frame;

Push on the tabs gently until they pop loose.



Attaching the Photo Frame;

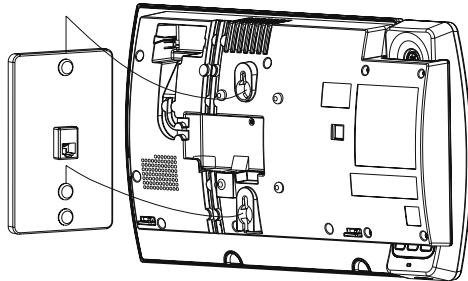
Align the frame (refer to the markings on the back of the frame for the correct placement) and gently snap onto the base.



Wall Mounting

NOTE: Remove the wire stand, if attached, by pressing on the tabs and sliding each leg out individually.

1. Connect the AC power adaptor into the electrical outlet and the DC connector into the jack on the back of the base.
2. Connect one end of the telephone line cord into the jack on the back of the base, feed the line cord through the groove, then connect the the other end into the modular telephone jack.
5. Slip the mounting holes (on the back of the base) over the wall plate posts and firmly slide the unit down into place.



Programming the Photo Frame

Specifications:

The Photo Frame is compatible with SD and XD memory cards ,or Sony memory sticks (Sony MS compatible ONLY with an adaptor), JPEG Image file formats and has an Internal Memory capacity of 32MB (approx. 100 photos at maximum of 2M/photo).

Frame Setup

A menu structure allows access to all of the built-in features. You may program the following items in the main menu: **Add Photos, Picture-Caller ID Setup, Delete Photos, Frame Preferences and Reset All Settings.**

NOTE: During programming, all handsets must be OFF (not in talk mode).

NOTE: Press the exit button repeatedly to return to an upper level menu or to return to the photo screen. After 60 seconds of inactivity, the frame will automatically exit programming mode and return to the photo screen without saving any changes.

NOTE: The handset cannot access nor navigate the Frame Setup menu.

NOTE: If photo display "freezes" during programming, wait for several minutes to allow for reset. If reset does not happen after two minutes, disconnect power to reboot.

Adding Photos

This option allows you to view thumbnails of photos and folders, and navigate the file structure of photos that are on an inserted memory card. You can also add photos from the memory card to the phone's memory. (refer to your camera instructions on how to properly format and transfer photos.)

NOTE: The photo frame is shipped with 4 default photos that will activate the slide show. After the first photo is added from a memory card the default photos are deactivated and only the new photo(s) stored to internal memory can be accessed.

1. Insert a loaded memory card into the slot on the side of the base, behind the frame.
2. Press the **menu/ok** button to go to the main menu.
3. Use the **▲** or **▼** button to scroll to **Add Photos**.
4. Press the **menu/ok** button to confirm, the contents of the root directory are displayed.

NOTE: If no memory card is detected, the screen displays *No memory card is available*. Check memory card installation, scroll to *Retry* or *Cancel*, and press the menu/ok button again.

5. Press the **menu/ok** button.

You may now select an entire folder or individual photos to add to the internal memory.

To select an entire folder:

1. Use the **navigational** buttons to position the green box around the desired folder.
2. Press the **menu/ok** button. The screen displays ***What would you like to do?***, along with the following options;

Open this folder - displays contents of folder for viewing
(you may also make individual photo selections from here)

Add this folder to internal memory - adds entire contents to internal memory

Cancel - returns to the root directory

3. Use the **navigational** buttons to scroll to desired option
4. Press the **menu/ok** button.

Open this folder - after viewing thumbnails, press the **exit** button to return to main menu

OR

select individual photos (reference section; **To select a photo**)

Add this folder to internal memory - press the **exit** button to return to main menu

Cancel - press the **exit** button to return to main menu

To select a photo:

1. Use the **navigational** buttons to scroll to position the green box around the desired photo.
2. Press the **menu/ok** button. The screen displays ***Reading card, do not remove*** and a check appears in the lower corner of the photo thumbnail. Repeat as necessary to select desired photos.
3. Press the **exit** button twice to return to photo screen.

NOTE: To cancel folder or photo upload, press the exit button.

However, the photos already copied to the internal memory before pressing exit, will remain.

NOTE: If internal memory is full, the screen displays *Internal Memory Full. File Copy Error*. Press the exit button to return to main menu. You will need to delete some pictures or folders in order to load more pictures.

Picture-Caller ID Setup

You can set up a link so that a caller's photo appears when you receive a call from them. The links can be edited or deleted.

1. Make sure your phone is **OFF** (not in talk mode).
2. Press the **menu/ok** button to go to the main menu.
3. Use the **▲** or **▼** button to scroll to **Picture-Caller ID Setup**.
4. Press the **menu/ok** button to confirm and select from the following items:
Add new Picture-Caller ID Link, Edit existing Picture-Caller ID Link,
and **Delete existing Picture-Caller ID Link**.

Add New Picture Caller ID Link (PCIDL)

From the Picture-Caller ID Setup menu:

1. Use the **▲** or **▼** button to scroll to **Add new Picture-Caller ID Link**.
2. Press the **menu/ok** button to confirm and select from the following items:
Use CID Records or **Enter Caller's Info**.

Use Caller ID Records

From the Add new Picture-Caller ID Link menu:

1. Use the **▲** or **▼** button to scroll to **Use CID Records**.
2. Press the **menu/ok** button to select.
3. Use the **▲** or **▼** button to scroll to the CID you wish to add.

NOTE: The *Use CID Records* screen DOES NOT display associated PCIDL's. Review existing PCIDL's before adding possible duplicates.

4. Press the **menu/ok** button to select.
5. Use the **navigational** buttons to position the green box around the desired field.
6. Press the **menu/ok** button to enter.

to input Name:

- Press the **▶** button for letter A
- Press and hold the **▲** or **▼** button to scroll through the uppercase alphabet (A-Z), lowercase alphabet (a-z), numbers (0-9), and special characters (<space> . , ? ! + - : " # * @ \ / _ () = §).

- Press the ► button to move the flashing cursor to the right.
- Press the ◀ button to delete a digit.
- Press the **menu/ok** button to save.

to input Linked Photo:

- Use the **navigational** buttons to select the desired photo or folder (selecting a folder will enable all photos in folder to cycle for the Caller ID instead of just one photo)
- Press the **menu/ok** button to select. The screen displays **Are you sure? No Yes**. Select **Yes** to save or **No** to return to photo selection,

to edit Telephone Number:

- Press the ◀ button to delete digits.
- Use the ▲ or ▼ button to re-enter number.

7. Use the **navigational** buttons to highlight **Save & Exit**.
8. Press the **menu/ok** button to save and return to Use CID Records menu.

NOTE: The Use CID Records screen DOES NOT display associated PCIDL's. Review existing PCIDL's before adding possible duplicates.

9. Press the **exit** button repeatedly to return to the photo screen.

Note: If internal memory is too full to store any more of photos to CID links, then when user selects "Photo Caller ID Setup", an alert panel appears: "Phone memory is full. Delete some pictures or folders to free up some space. Would you like to do that now? Yes No. Selecting "No" exits to the Frame Setup Menu with "Photo Caller ID Setup" highlighted; Selecting "Yes" goes to the "Delete Photos" screen.

Enter Caller's Information

From the Add new Picture-Caller ID Link menu:

1. Use the ▲ or ▼ button to scroll to **Enter Caller's Info**.
2. Press the **menu/ok** button to select.
3. Repeat Steps 5-9 in the Use Caller ID Records Section to enter information,

Edit Existing Picture Caller ID Link (PCIDL)

If you've already set up a PCIDL, you can edit the name, number, or photo link.

From the Picture-Caller ID Setup menu:

1. Use the ▲ or ▼ button to scroll to **Edit existing Picture-Caller ID Link**.
2. Press the **menu/ok** button to confirm.
3. Use the ▲ or ▼ button to scroll to the PCIDL you wish to edit.
4. Press the **menu/ok** button to select. Make any edits necessary.
5. Use the **navigational** buttons to scroll to **Save & Exit**.
6. Press the **menu/ok** button to save changes.
7. Press the **exit** button repeatedly to return to the photo screen.

Delete Existing Picture Caller ID Link (PCIDL)

This option allows you to erase a PCIDL that you no longer need.

From the Picture-Caller ID Setup menu:

1. Use the ▲ or ▼ button to scroll to **Delete existing Picture-Caller ID Link**.
2. Press the **menu/ok** button to confirm.
3. Use the ▲ or ▼ button to scroll to the PCIDL you wish to delete.
4. Press the **menu/ok** button to select. The screen displays **Are you sure? No Yes**.
5. Use the ▲ or ▼ button to select **No** or **Yes**.
6. Press the **exit** button repeatedly to return to photo screen.

NOTE: Deleting a PCIDL does NOT delete any photos or folders that are linked to the photo or folder. The photos and folders are preserved in internal memory.

Delete Photos

This option allows you to remove photos from the photo frame's internal memory.

1. Make sure your phone is **OFF** (not in talk mode).
2. Press the **menu/ok** button to go to the main menu.
3. Use the ▲ or ▼ button to scroll to **Delete Photos**.
4. Press the **menu/ok** button to confirm, thumbnail view displayed.
5. Press the **navigational** buttons to select a photo or folder to delete, use the **menu/ok** button to open folders.
6. Press the **menu/ok** button to confirm. The screen displays **Are you sure? PCID will also be deleted. No Yes**.

5. Use the ▲ or ▼ button to select **No** or **Yes**.

NOTE: When a picture or folder is deleted, it will unlink all PCIDL's associated with the photo or folder, it does NOT delete the associated name and number.

After deleting a picture or folder, the picture or folder that was before the deleted photo or folder is now highlighted in the thumbnail view as a convenience so that you can continue deleting pictures or folders.

Note: If "Delete Photos" is selected and if no PCIDLs have been put into internal memory with "Add Photos", then display this alert panel: "You have not placed any photos in phone memory." for 3 seconds, after which the Frame Setup menu is displayed and Delete Photos is highlighted.

Note: "Delete Photos" is only for deleting a photo or folder from the phone's internal memory. "Delete Photos" cannot be used to delete a photo or folder from a memory card.

Note: If delete a folder which includes sub-folders, could it delete all of the pictures in the sub-folders? (TBD)

Frame Preferences

1. Make sure your phone is **OFF** (not in talk mode).
2. Press the **menu/ok** button to go to the main menu.
3. Use the ▲ or ▼ button to scroll to **Frame Preferences**.
4. Press the **menu/ok** button to confirm and select from the following settings: **Frame Display Mode, Slide Show Setup, Frame On/Off Time, Power Saver, Brightness and Language**.

Frame Display Mode

You can choose to display a photo slide show and/or clock in the picture frame

From the Frame Preferences menu:

1. Use the ▲ or ▼ button to scroll to **Frame Display Mode**.
2. Press the **menu/ok** button to confirm.
3. Use the ▲ or ▼ button to scroll to desired option. The default setting is *Slide Show w/Clock*.
4. Press the **menu/ok** button to save. The screen displays **Saved**.
5. Press the **exit** button repeatedly to return to the photo screen.

Slide Show Setup

You can adjust how the photos in the slide show are presented.

From the Frame Preferences menu:

1. Use the ▲ or ▼ button to scroll to **Slide Show Setup**.
2. Press the **menu/ok** button to confirm and select from the following settings; **Source**, **Speed**, and **Shuffle**.
3. Use the ▲ or ▼ button to scroll to desired setting.
4. Press the **menu/ok** button to confirm.
 - Source** - choose whether a slide show displays from internal memory, a memory card, or both.
 - Use the ▲ or ▼ button to scroll to desired option.
The default setting is *Both*.
 - Press the menu/ok button to save. The screen displays **Saved**.
 - Speed** - controls how fast the photos change in the slide show.
 - Use the ▲ or ▼ button to scroll to desired option.
The default setting is *5 seconds*.
 - Press the menu/ok button to save. The screen displays **Saved**.
 - Shuffle** - choose whether photo in a slide show are randomly displayed or not. Select **On** to display photos randomly. Select **Off** to display photos in chronological installation order from oldest to newest.
 - Use the ▲ or ▼ button to scroll to desired option.
The default setting is *On*.
 - Press the menu/ok button to save. The screen displays **Saved**.
5. Press the **exit** button repeatedly to return to the photo screen.

Power Saver

Select if and when frame goes to power saver mode. When Power Saver is activated, the backlighting dims.

From the Frame Preferences menu:

1. Use the ▲ or ▼ button to scroll to **Power Saver**.
2. Press the **menu/ok** button to confirm.
3. Use the ▲ or ▼ button to scroll to desired option. The default setting is *Off*.
4. Press the **menu/ok** button to save. The screen displays **Saved**.
5. Press the **exit** button repeatedly to return to the photo screen.

Frame On/Off Time

You can set a schedule for the frame activation.

From the Frame Preferences menu:

1. Use the ▲ or ▼ button to scroll to **Frame On/Off Time**.
2. Press the **menu/ok** button to confirm.
3. Use the ▲ or ▼ button to set desired time, use the ◀ or ▶ button to move cursor. The default setting is *Turn On Frame is 5:00 AM* and *Turn Off Frame 11:00 PM*.
4. Press the **menu/ok** button to save. The screen displays **Saved**.
5. Press the **exit** button repeatedly to return to the photo screen.

Brightness

You can choose a brightness level and a contrast level for the picture frame.

From the Frame Preferences menu:

1. Use the ▲ or ▼ button to scroll to **Brightness**.
2. Press the **menu/ok** button to enter. The screen displays slide bars for Brightness and Contrast settings.
3. Use the ▲ or ▼ button to highlight **Brightness**.
4. Use the ◀ or ▶ button to decrease/ increase the brightness level. The default brightness level setting is 50%
5. Use the ▲ or ▼ button to highlight **Contrast**.
6. Use the ◀ or ▶ button to decrease/ increase the brightness level. The default contrast level setting is 50%.
7. Press the **menu/ok** button to save your selections. The screen displays **Saved**.
8. Press the **exit** button repeatedly to return to the photo screen.

Language

Select the display language for the base from English, French or Spanish. The handset language is set separately on the handset.

From the Frame Preferences menu:

1. Use the ▲ or ▼ button to scroll to **Language**.
2. Press the **menu/ok** button to enter.
3. Use the ▲ or ▼ button to scroll to the desired language. The default setting is *English*.
4. Press the **menu/ok** button to select. The screen displays **Saved**.
5. Press the **exit** button repeatedly to return to the photo screen.

Reset All Settings

Reset all frame preferences to factory default settings.

1. Make sure your phone is **OFF** (not in talk mode).
2. Press the **menu/ok** button to go to the main menu.
3. Use the **▲** or **▼** button to scroll to **Reset All Settings**.
4. Press the **menu/ok** button to enter. The screen displays **Are you sure? No Yes**.
5. Use the **▲** or **▼** button to select **No** or **Yes**.
6. Press the **menu/ok** button to save. The screen displays **Saved**.
7. Press the **exit** button repeatedly to return to the photo screen.

Programming the Telephone

A menu structure to give you access to all of the built-in features. You may program the following items in main menu: Intercom, Setup HS, Setup BS, Date/Time, and Registration.

NOTE: If the handset is not registered, or is out of range, Setup BS and Date/Time are not programmable, and *Unavailable* displays as you try to enter these two menus.

NOTE: During programming, you may press the mute/clear button at any time to exit the sub-menu and return to the main menu, or press flash/exit to exit programming and return to standby screen.

NOTE: If no key is pressed for 60 seconds, the handset will automatically exit programming and return to standby screen.

NOTE: The handset cannot access nor navigate the Frame Setup menu.

Handset Setup

1. Make sure your phone is **OFF** (not in talk mode).
2. Press the **menu** button to go to the main menu.
3. Press **cid/vol (◀ or ▶)** button to scroll to **Setup HS**.
4. Press the **menu** button to confirm and you may program the following items: Ring Volume, Tones, Auto Talk, Handset Name and Language.

NOTE: If using a Model 27911 accessory handset, there will be additional menu items which DO NOT apply to the 27956. These items are used when the 27911 is paired with a model which includes an answering system.

Language

From the Setup HS Menu:

1. Use the **cid/vol (◀ or ▶)** button to scroll to the **Language** sub-menu.
2. Press the **menu** button to enter the menu.
3. Use the **cid/vol (◀ or ▶)** button to select **English, Français** or **Espanol**. The default setting is *English*.
4. Press the **menu** button to save your selection.

Ring Volume

There are 4 volume levels for your selection. They are Volume 1 to 3 and Ringer off respectively.

From the Setup HS Menu:

1. Use the **cid/vol (◀ or ▶)** button to scroll to the **Ring Volume** sub-menu.
2. Press the **menu** button to enter the menu. Use the **cid/vol (◀ or ▶)** button to scroll to your selection. The default setting is *VOL 3*.
3. Press the **menu** button to save your selection and the new volume setting shows in the display.

NOTE: Ringer can be disabled by pressing the mute/clear/ringer on/off button in standby mode, please refer to "Ringer On/Off".

Tones

From the Setup HS Menu:

1. Use the **cid/vol (◀ or ▶)** button to scroll to the **Tones** sub-menu.
2. Press the **menu** button to confirm and you may program the following items: Low Battery, No Coverage and Key Tone.
3. Use the **cid/vol (◀ or ▶)** button to scroll to the item you want to program and press the **menu** button to enter.

Low Battery - You may set the warning beep to "On" when your handset battery is low, so as to alert you to charge the battery. Use the **cid/vol (◀ or ▶)** button to scroll to **On** or **Off**, then press the **menu** button to save the setting. The default setting is *On*.

No Coverage - You may set the warning beep to "On" or "Off" when the handset is out of range. Use the **cid/vol (◀ or ▶)** button to scroll to **On** or **Off**, then press the **menu** button to save the setting. The default setting is *On*.

NOTE: When the handset is in the idle (off) mode and is out of range from the base unit the display shows *Searching*. If the talk/call back button is pressed, the screen briefly displays *Unavailable* then returns to *Searching*.

Key Tone - You may set the key tone to "On" or "Off" to sound a tone when you press any button. Use the **cid/vol (◀ or ▶)** button to scroll to **On** or **Off**, then press the **menu** button to save the setting. The default setting is *On*.

Auto Talk

This option allows you to pick up the handset from base to answer an incoming call without pressing the talk/call back button.

From the Setup HS Menu:

1. Use the **cid/vol (◀ or ▶)** button to scroll to the **Auto Talk** sub-menu.
2. Press the **menu** button to enter the menu. Use the **cid/vol (◀ or ▶)** button to scroll to your selection. The default setting is *On*.
3. Press the **menu** button to save your selection.

Handset Name

From the Setup HS Menu:

1. Use the **cid/vol (◀ or ▶)** button to scroll to the **Handset name** sub-menu.
2. Press the **menu** button to enter the menu. The default setting is *Handset*.
3. Use the touch-tone pad to enter a name (up to 13 characters). More than one letter is stored in each of the number keys. For example, to enter Bill Smith, press the 2 key twice for the letter B. Press the 4 key 3 times for the letter I. Press the 5 key 3 times for the letter L. Press the 5 key 3 times for the second letter L, and press the 1 key to insert a space between the first and last name. Press the 7 key 4 times for the letter S; press the 6 key once for the letter M; press the 4 key 3 times for the letter I; press the 8 key for the letter T; press the 4 key twice for the letter H.

NOTE: If you make a mistake, use the cid/vol (- or +) button to move the cursor forward or backward, then use the mute/clear button to backspace and delete one character at a time.

NOTE: * key is a function key to toggle between the upper case and low case of characters during text edit.

4. Press the **menu** button to save your name. You will hear a confirmation tone and the screen displays *Saved*.