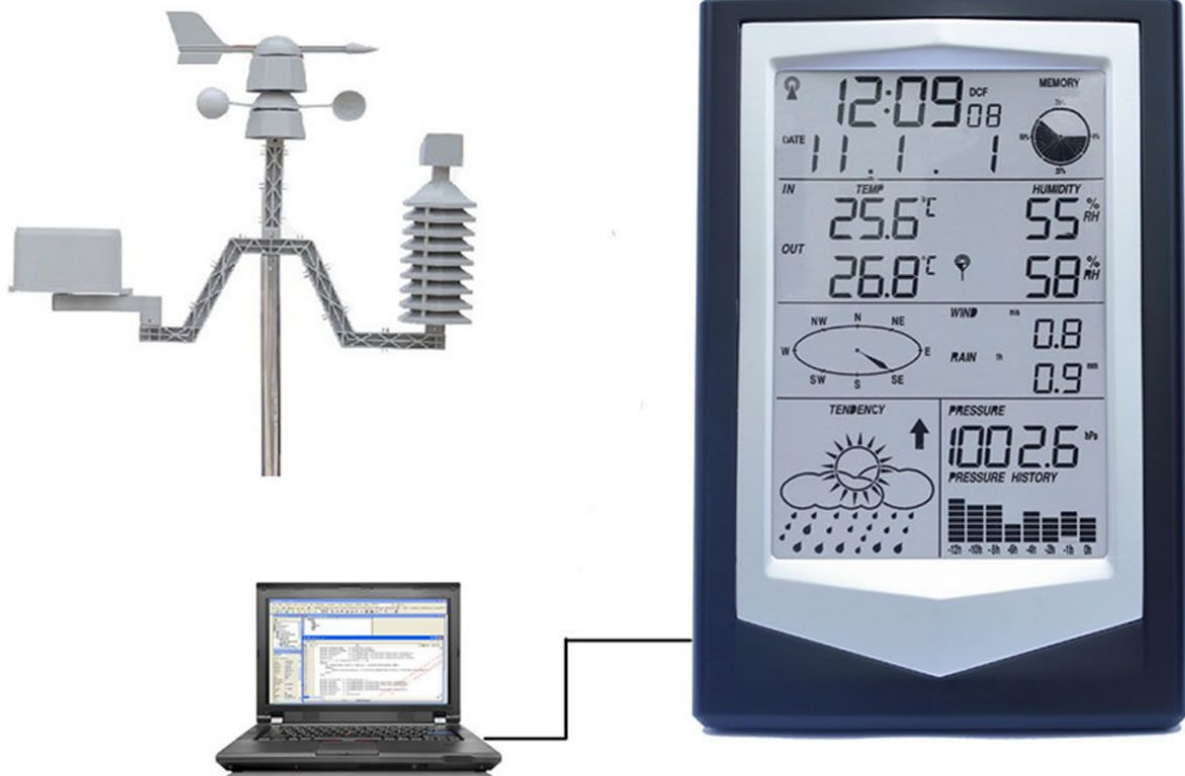


# Professional Wireless Weather Station with solar Power & PC Link

## WS1040 User Manual



## Contents

Descriptions: .....	1
Operations: .....	2
1. RCC .....	2
2. Clock Mode .....	3
3. Date Mode .....	4
4. Wind speed Mode .....	5
5. Historical record mode .....	6
6. Rainfall Mode .....	6
7. Indoor Temperature Mode .....	6
8. Indoor Humidity Mode .....	7
9. Outdoor Temperature Mode .....	8
10. Outdoor Humidity Mode .....	8
11. Weather Forecast Mode .....	9
12. Barometric Pressure Mode .....	9
13. Pressure Histogram Mode .....	10
14. Smart Weather software .....	11
Specification: .....	13
1. Receiver .....	13
2. Outdoor transmitter .....	14
3. Setting Up Guide .....	14

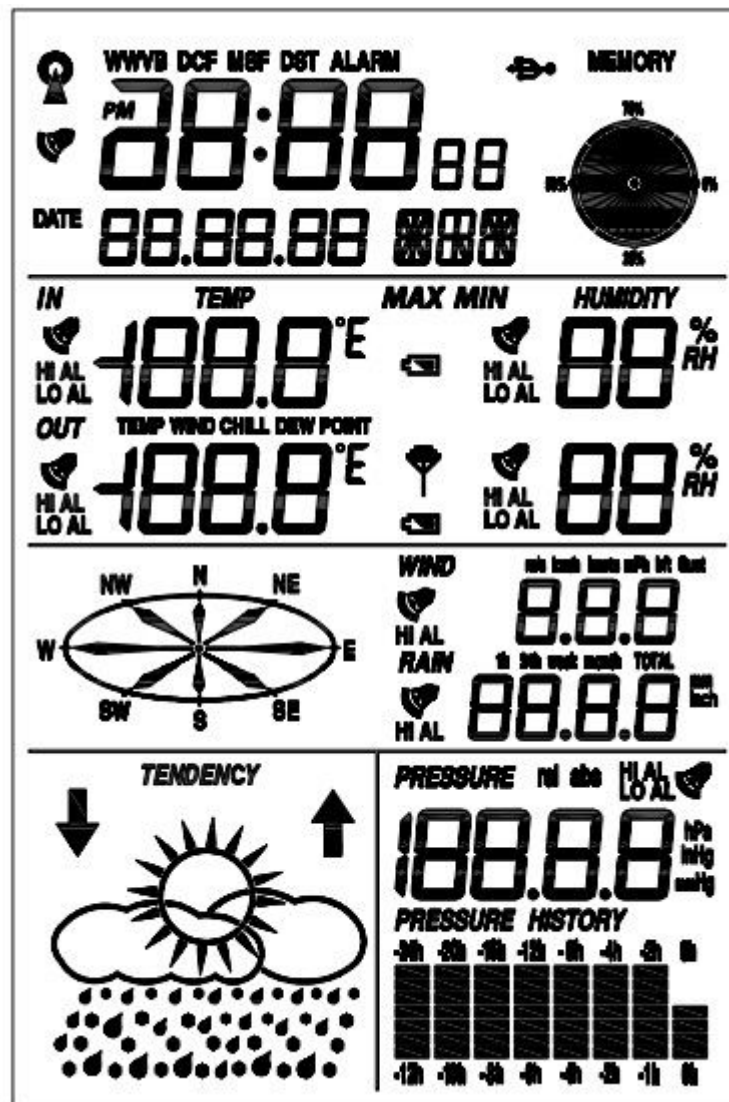
WS1040 is a professional weather station with data save function can be stored up to two years of meteorological information, supporting computer software, the user can download all data to PC to save at any time for queries, very convenient and practical.

## **Descriptions:**

1. The date display format can be set as: YYYY-MM-DD, MM-DD- YYYY, DD-MM-YYYY (user setting)
2. The hour display format can be set between 12 hour format or 24 hour format. The time zone can be set from -12 to +12 (user setting);
3. The RCC time function can be set as WWVB; Wireless 433 MHZ receiving. Available distance: 100 meters in open field
4. Alarm function: alarm sound gradually enhanced to remind user, alarm time is 2 minutes;
5. Indoor humidity: relative humidity display, high humidity alarm value and low humidity alarm value can be set independently, you can query the maximum humidity value and the minimum humidity values ;
6. Indoor temperature: relative temperature display, high temperature alarm value and low temperature alarm value can be set independently, you can query the maximum temperature value and the minimum temperature values, °C/°F (user setting) ;
7. Outdoor humidity: relative humidity display, high humidity alarm value and low humidity alarm value can be set independently, you can query the maximum humidity value and the minimum humidity values ;
8. Outdoor temperature: relative temperature display, high temperature alarm value and low temperature alarm value can be set independently, you can query the maximum temperature value and the minimum temperature values, °C/°F (user setting) ;
9. Wind speed: user can set average wind speed or gust wind speed, the wind speed high alarm value can be set independently, you can query the corresponding maximum value, the display unit can be set to m/s, km/h, mph, knots or bft;
10. Rainfall: the user can set as time period shows hours, 24 hours, week, month rainfall or total rainfall, hours and 24 hours of heavy rainfall alarm value can be set independently, you can query the corresponding maximum display, units mm or inch;
11. Wind direction: N, NE, E, SE, S-, SW, W, NW eight wind direction can be displayed, setting up a wind as the alarm direction;
12. Air pressure: the user can set to show the absolute pressure or relative pressure, can independently set high pressure alarm values and low pressure alarm value, the display unit can be set to Hpa or Inhg or mmhg;
13. Barometric pressure changing trends: the user can set to show 12 hours or 24 hours of changing trend;
14. Weather forecast can be sunny, cloudy, overcast, rainy, snowy, storms six states icons and weather trends;
15. Low-voltage detection: If the receiver and transmitter battery voltage is low, it reminds user to replace the batteries as soon as possible;
16. Backlight: press any key or the top touch light, the backlight will be lit and duration 10 seconds;
17. Buzzer: alarm duration of two minutes, the alarm clock alarm sound intensity gradually increased of 30 seconds as units;
18. Data storage: user can store up to two years of meteorological data, user can also adjust PC data recording cycle;

## Operations:

I . Power-on LCD Fully display two seconds into the normal operating mode.




### 1. RCC Mode

II . Radio control clock signal: support DCF, WWVB, MSF, three wireless control clock signal mode, as follows:


- (1). DCF is German wireless control clock signal standard, location of the transmitting station in Frankfurt, the transmit power is 30 kilowatts, it can cover most areas of Europe within the range of 2000 km; DCF
- (2). WWVB is America wireless control clock signal standard, location of the transmitting station in Colorado, the transmit power is 50 kilowatts, it can cover most areas of America within the range of 2000 km;
- (3). MSF is Britain wireless control clock signal standard, location of the transmitting station in middle of Britain, the transmit power is 17 kilowatts, it can cover Britain within the range of 1000 km, also part of western Europe and northern Europe area;

III. RF signal receiver: means this unit is able to receive outdoor sensor data sent via RF as follows:  
User insert the battery, the unit completed initialization, immediately began to search for the outdoor


sensor, if in three minutes no signal receiving then search fails, once receive signal the unit will only work with the sensor establishing a data link, 48 seconds of cycle synchronization to receive the sensor data, so in order to ensure that machine can work, be sure to install outdoor sensor firstly, then mount the

receiver battery, icon  in the search process will remain flashing until search the outdoor sensor or search fails, the search process, please do not carry out any operation of this machine;

IV . Automatic Calibration time: by receiving radio control clock signal (RCC) to achieve the automatic Calibration time function, the unit will in 2:00:00 and 12:00:00 in the daily timing receiving radio

controlled clock signal, in receiving procession  icon will remain flashing until the completion of reception at the receiver, please do not carry out any operation of this machine. If you receive

successfully, then Display  icon, otherwise the  icon will disappear, the longest time to receive is 8 minutes.

V . Data storage: user via USB cable connect to the PC, the  icon is displayed, indicating that the USB is ready, users can query maximum/minimum on the computer, setting the alarm value, set all corresponding kinds of parameters, the user via the computer in 5 minutes to 240 minutes to set up data logging cycle, you can save up to two years of meteorological data, users can also download meteorological data to the computer to save.

## Keys operation

The Machine has MODE, NEXT, SET, INC/+, DEC/- five buttons, In addition to normal mode, time mode, date mode, wind speed mode, memory historical data mode, rainfall patterns, indoor temperature patterns. Indoor humidity mode, outdoor temperature mode, outdoor humidity mode, weather forecast patterns, Air pressure mode, pressure histogram mode, in any operating mode, short press MODE button to enter next work mode, short press NEXT button to enter next work item, if pressing key it is alarming, or outdoor sensor data is being received or is receiving the wireless control clock signal, then pressing key just close the corresponding function and will not implement the key functions. the detailed operation of the various operating modes are described as follows:

## 2. Clock Mode

In normal mode, press MODE button to enter time mode, the user can carry out time-related settings in this mode, press the NEXT button to enter the next item:

### (1) Time zone setting:

Users according to their geographical location to adjust time zone settings, short press INC/+ button to increase the value of the time zone setting, short press the DEC/- button to decrease the time zone setting, press and hold INC/+ button more than 3seconds can quickly increase the time zone setting values , press and hold the DEC/- buttons more than 3 seconds can quickly decrease the time zone setting value;

### (2) Hour display format setting:

User can adjust hour display format for 12 hours or 24 hours, short press INC/+ or DEC/- buttons to switch;

### (3) Daylight Saving Time setting:

Daylight Saving Time set in short-circuit point selection for Europe automatically skip, only short-circuit point selection for U.S version valid, according to the actual situation, short press INC/+ or DEC/- button to enable or disable daylight saving time automatically adjust function;

(4) hour setting:

In this mode user can adjust the current hours time and short press INC/+ button to increase the hours, short press DEC/- buttons to decrease the hours, press and hold the INC/+ button over 3 seconds you can quickly increase the hours, press and hold DEC/- buttons more than 3 seconds you can quickly decrease the hours;

(5) Minutes setting:

In this mode user can adjust the current minutes time and short press INC/+ button to increase the minutes, short press DEC/- buttons to decrease the minutes, press and hold the INC/+ button over 3 seconds you can quickly increase the minutes, press and hold DEC/- buttons more than 3 seconds you can quickly decrease the minutes;

(6) Alarm clock hours setting:

User to adjust the hour setting of the alarm clock in this mode, short press SET button to enable or disable the alarm clock, short press INC/+ button to increase the hour setting, press the DEC/- button to decrease hours set, press and hold INC/+ button over 3 seconds you can quickly increase the hour setting, press and hold the DEC/- button more than 3 seconds can quickly decrease the hours set;

(7) Alarm clock minutes setting:

User to adjust the minutes setting of the alarm clock in this mode, short press SET button to enable or disable the alarm clock, short press INC/+ button to increase the minutes setting, press the DEC/- button to decrease minutes set, press and hold INC/+ button over 3 seconds you can quickly increase the minutes setting, press and hold the DEC/- button more than 3 seconds can quickly decrease the minutes set;

### 3. Date Mode

In time mode, short press MODE button to enter date mode, users can be date-related settings, press the NEXT button to enter the next item:

(1) Contrast setting

In this mode user can adjust the display contrast, press INC/+ button to increase contrast, press the DEC/- button to decrease contrast;

(2) Date display format settings

Users can adjust Date display format settings in this mode, press INC/+ or DEC/- button to adjust the date display format, instruction as follows:



(3) Year setting

User can adjust the year in this mode, short press the INC/+ button to increase the year, short press the DEC/- button to decrease the year, hold down INC/+ button over 3 seconds you can quickly

increase the year, press and hold the DEC/- button over 3 seconds you can quickly decrease the year;

#### (4) Month setting

User can adjust the month in this mode, short press the INC/+ button to increase the month, short press the DEC/- button to decrease the month, hold down INC/+ button over 3 seconds you can quickly increase the month, press and hold the DEC/- button over 3 seconds you can quickly decrease the month;

#### (5) Date setting

User can adjust the date in this mode, short press the INC/+ button to increase the date, short press the DEC/- button to decrease the date, hold down INC/+ button over 3 seconds you can quickly increase the date, press and hold the DEC/- button over 3 seconds you can quickly decrease the date;

## 4. Wind Speed Mode

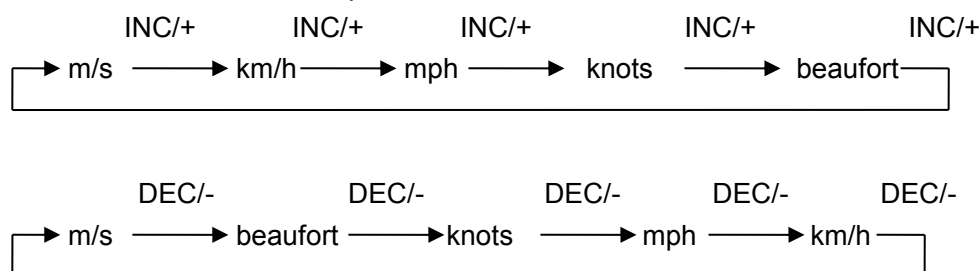
In date mode, short press MODE button to enter wind speed mode, User can be related setting of wind speed, press the NEXT button to enter the next item:

#### (1) Wind speed display setting

Users can adjust wind speed display setting in this mode, press INC/+ or DEC/- button can switch between average and gust wind speed;

#### (2) Wind speed unit setting

Users can adjust wind speed unit setting in this mode, press INC/+ increase wind speed unit value, press DEC/- button decrease wind speed unit value, instruction as follows;

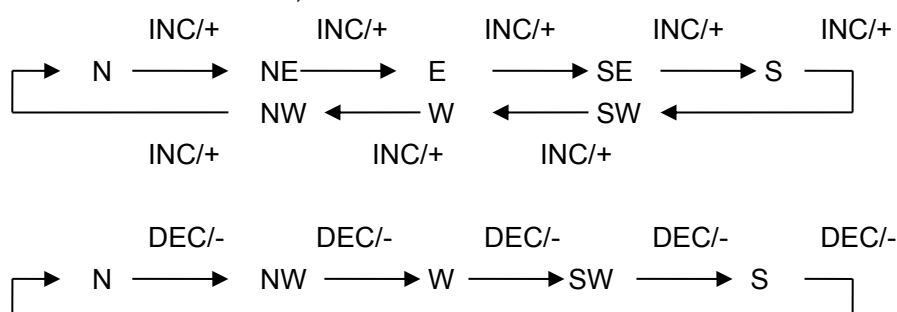


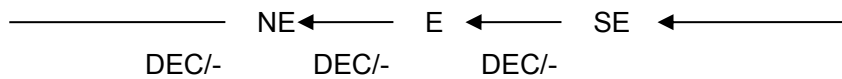
#### (3) High wind speed alarm setting

Users can adjust the high wind speed alarm set in this mode, press the SET button to allow or prohibit the high wind speed alarm, press the INC/+ button to increase the high wind speed alarm value, press the DEC/- button to decrease the high wind speed alarm value, Press and hold INC/+ button over 3 seconds you can quickly increase the wind speed high alarm value, press and hold the DEC/- button more than 3 seconds you can quickly decrease the wind speed high alarm value;

#### (4) Wind direction alarm setting

Users can adjust wind direction in this mode, press the SET button to allow or prohibit wind direction alarm, INC/+ button to increase the wind direction alarm value, press the DEC/- button to decrease the wind direction alarm value;





#### (5) Maximum wind speed display

In this mode you can view the maximum wind speed and time records, press and hold the SET button over 3 seconds to clear the maximum record;

## 5. Historical record mode

In Wind speed mode, short press MODE button to enter the storage of historical data mode, user can proceed related operation of data memory, press the NEXT button to enter the next item:

#### (1) Storage of historical data view

In this mode, users can view the memory of historical data records, press the INC/+ button to view a recent historical data records, press the DEC/- button to view older historical data records;

#### (2) Memory historical data clear

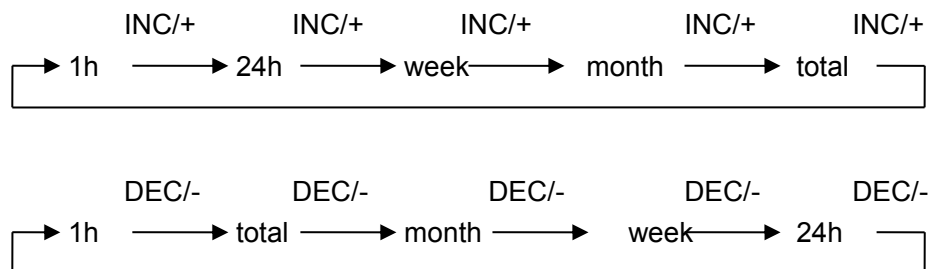
In this mode, user can clear all the historical data records in the data memory, press and hold the SET button over 3 seconds to clear all the historical data records;

## 6. Rainfall Mode

Mode of memory historical data, press the MODE button to enter the rainfall pattern, user can be rainfall-related settings, press the NEXT button to enter the next item:

#### (1) Rainfall display setting

Users can adjust the rainfall display setting in this mode, short press the INC/+ button to increase rainfall display settings, press DEC/- button to decrease rainfall display settings, instruction as follow:



#### (2) Rainfall unit setting

Users can adjust rainfall unit in this mode, press the INC/+ or DEC/- button to switch between mm and inch;

#### (3) high Rainfall alarm setting

In this mode user can adjust 1 hour or 24 hours high rainfall alarm set, if rainfall display is set for the week, month, total, then the high rainfall alarm for 1 hour high rainfall alarm settings, press the SET button to allow or prohibit high rainfall alarm, press the INC/+ button to increase the high rainfall alarm value, press the DEC/- button to decrease high rainfall alarm value, press and hold INC/+ button over 3 seconds you can quickly increase high rainfall alarm value, press and hold the DEC/- button more than 3 seconds you can quickly decrease high rainfall alarm value;

#### (4) Maximum rainfall display

In this mode user can view maximum rainfall and time records, press and hold the SET button over 3 seconds to clear the maximum record;

#### (5) Rainfall full reset

In this mode, clear all the rainfall data from the current time, recalculated 1h, 24h, week, month, total rainfall;

## 7. Indoor Temperature Mode

Rainfall mode, short press MODE button to enter indoor temperature mode, user can be related indoor temperature setting, press the NEXT button to enter the next item:

#### (1) Indoor temperature setting

In this mode to adjust the indoor temperature units, press the INC/+ or DEC/- button to switch between °C and °F;

#### (2) Indoor temperature high alarm setting

In this mode user can adjust high indoor temperature alarm set, press the SET button to allow or prohibit high indoor temperature alarm, short press the INC/+ button to increase the high indoor temperature alarm values, short press the DEC/- buttons to decrease high indoor temperature alarm value, press and hold the INC/+ button over 3 seconds you can quickly increase the high indoor temperature alarm value, press and hold the DEC/- button more than 3 seconds you can quickly decrease high indoor temperature alarm values ;

#### (3) Low Indoor temperature alarm setting

In this mode user can adjust low indoor temperature alarm set, press the SET button to allow or prohibit low indoor temperature alarm, short press the INC/+ button to increase the low indoor temperature alarm values , short press the DEC/- buttons to decrease indoor low temperature alarm value, press and hold the INC/+ button over 3 seconds you can quickly increase the low indoor temperature alarm value, press and hold the DEC/- button more than 3 seconds you can quickly decrease low indoor temperature alarm values ;

#### (4) Maximum indoor temperature display

In this mode, user can view the maximum indoor temperature and time records, press and hold the SET button over 3 seconds to clear the maximum record;

#### (5) Minimum indoor temperature display

In this mode, user can view the minimum indoor temperature and time records, press and hold the SET button over 3 seconds to clear the maximum record;

## 8. Indoor Humidity Mode

Indoor temperature mode, short press MODE button to enter indoor humidity mode, user can be related indoor humidity settings, press the NEXT button to enter the next item:

#### (1) High indoor humidity alarm setting

In this mode user can adjust high indoor humidity alarm set, press the SET button to allow or prohibit high indoor humidity alarm, short press the INC/+ button to increase the high indoor humidity alarm values , short press the DEC/- buttons to decrease high indoor humidity alarm value, press and hold the INC/+ button over 3 seconds you can quickly increase the high indoor humidity alarm value, press and hold the DEC/- button more than 3 seconds you can quickly decrease high indoor humidity alarm values ;

#### (2) Low indoor humidity alarm setting

In this mode user can adjust low indoor humidity alarm set, press the SET button to allow or prohibit low indoor humidity alarm, short press the INC/+ button to increase the low indoor humidity alarm values , short press the DEC/- buttons to decrease low indoor humidity alarm value, press and hold the INC/+ button over 3 seconds you can quickly increase the low indoor humidity alarm value,

press and hold the DEC/- button more than 3 seconds you can quickly decrease low indoor humidity alarm values ;

### (3) Maximum Indoor humidity display

In this mode, user can view maximum indoor humidity and time records, press and hold the SET button over 3 seconds to clear the maximum record;

### (4) Minimum Indoor humidity display

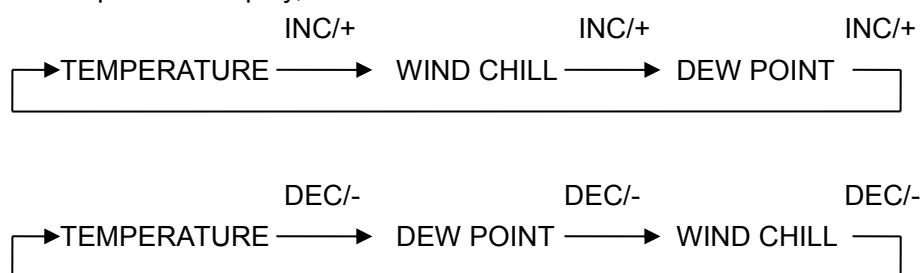
In this mode, user can view minimum indoor humidity and time records, press and hold the SET button over 3 seconds to clear the minimum record;

## 9. Outdoor Temperature Mode

Outdoor temperature mode, short press MODE button to enter Outdoor temperature mode, user can be related Outdoor temperature settings, press the NEXT button to enter the next item:

### (1) Outdoor temperature setting

In this mode user can adjust outdoor temperature display settings, press the INC/+ button to increase the value of outdoor temperature display , press the DEC/- button to decrease the value of outdoor temperature display, instruction as follows:



;

### (2) Outdoor temperature units setting

In this mode to adjust the outdoor temperature units, press INC/+ or DEC/- buttons to switch between °C and °F;

### (3) High outdoor temperature alarm setting

In this mode user can adjust the high outdoor temperature alarm setting, press SET button to allow or prohibit the high outdoor temperature alarm, press the INC/+ button to increase the high outdoor temperature alarm values , short press the DEC/- button to reduce high outdoor temperature alarm value, press and hold INC/+ button over 3 seconds you can quickly increase the high outdoor temperature alarm value, press and hold the DEC/- button more than 3 seconds you can quickly reduce the high outdoor temperature alarm values ;

### (4) Low outdoor temperature alarm setting

In this mode user can adjust the Low outdoor temperature alarm setting, press SET button to allow or prohibit the Low outdoor temperature alarm, press the INC/+ button to increase the Low outdoor temperature alarm values , short press the DEC/- button to reduce Low outdoor temperature alarm value, press and hold INC/+ button over 3 seconds you can quickly increase the Low outdoor temperature alarm value, press and hold the DEC/- button more than 3 seconds you can quickly reduce the Low outdoor temperature alarm values ;

### (5) Maximum outdoor temperature display

In this mode, user can view maximum outdoor temperature and time records, press and hold the SET button over 3 seconds to clear the maximum record;

#### (6) Minimum outdoor temperature display

In this mode, user can view minimum outdoor temperature and time records, press and hold the SET button over 3 seconds to clear the minimum record;

## 10. Outdoor Humidity Mode

Outdoor humidity mode, short press MODE button to enter Outdoor humidity mode, user can be related humidity temperature settings, press the NEXT button to enter the next item:

#### (1) High outdoor humidity alarm setting

In this mode user can adjust the high outdoor humidity alarm setting, press SET button to allow or prohibit the high outdoor humidity alarm, press the INC/+ button to increase the high outdoor humidity alarm values , short press the DEC/- button to reduce high outdoor humidity alarm value, press and hold INC/+ button over 3 seconds you can quickly increase the high outdoor humidity alarm value, press and hold the DEC/- button more than 3 seconds you can quickly reduce the high outdoor humidity alarm values ;

#### (2) Low outdoor humidity alarm setting

In this mode user can adjust the Low outdoor humidity alarm setting, press SET button to allow or prohibit the Low outdoor humidity alarm, press the INC/+ button to increase the Low outdoor humidity alarm values , short press the DEC/- button to reduce Low outdoor humidity alarm value, press and hold INC/+ button over 3 seconds you can quickly increase the Low outdoor humidity alarm value, press and hold the DEC/- button more than 3 seconds you can quickly reduce the Low outdoor humidity alarm values ;

#### (3) Maximum Outdoor humidity display

In this mode, user can view maximum outdoor humidity and time records, press and hold the SET button over 3 seconds to clear the maximum record;

#### (4) Minimum Outdoor humidity display

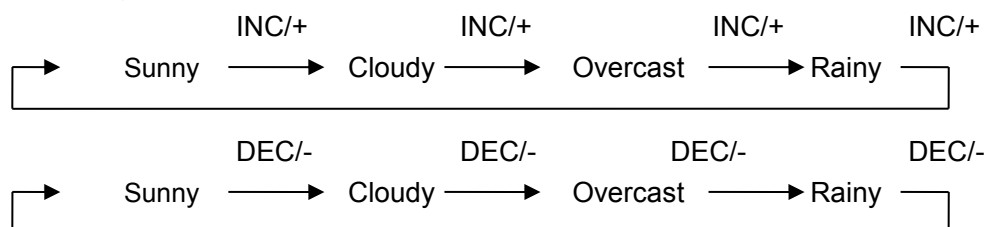
In this mode, user can view minimum outdoor humidity and time records, press and hold the SET button over 3 seconds to clear the minimum record;

## 11. Weather Forecast Mode

In Outdoor humidity mode, short press MODE key to enter the weather prediction mode, user can be related weather conditions setting in this mode, press the NEXT button to enter the next item:

#### (1) Weather conditions setting

In this mode to adjust the current weather conditions, instruction as follows:



#### (2) Weather forecast threshold value setting

In this mode to adjust the current weather conditions changing threshold settings, press INC/+ button to increase the weather forecast threshold value, press DEC/- buttons to decrease the weather forecast threshold value, hold down INC/+ button more than 3seconds can quickly increase the weather forecast threshold value, press and hold the DEC/- more than 3 seconds can quickly decrease the weather forecast threshold value;

#### (3) Storm alarm threshold value settings

In this mode, adjustable storm alarm threshold value settings, press the INC/+ button to increase the storm alarm threshold value, according to the DEC/- button to decrease the storm alarm threshold value, hold down the INC/+ button more than 3 seconds to quickly increase the storm alarm threshold value press and hold the DEC/- button over 3 seconds you can quickly decrease storm alarm threshold value;

## 12. Barometric Pressure Mode

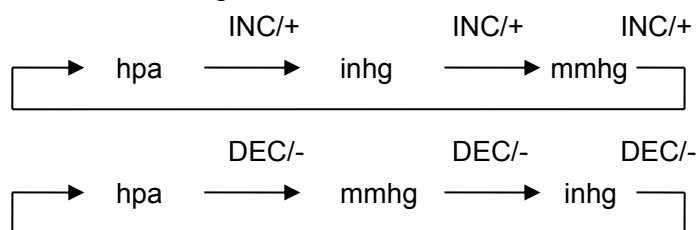
In air pressure mode, short press MODE key to enter the air pressure mode, user can be related pressure setting in this mode, press the NEXT button to enter the next item:

### (1) Air pressure display setting

In this mode, user can adjust the air pressure settings, press INC/+ or the DEC/- button to switch between absolute pressure and relative pressure;

### (2) Air pressure units setting

Users can adjust the air pressure unit in this mode, short press the INC/+ button to increase the pressure unit setting value, press the DEC/- button to decrease the set value of the pressure unit, instruction as following:



### (3) Relative pressure value setting

Relative pressure value set in the pressure display settings is absolute air pressure automatically skipped, relative pressure can be adjusted in this mode, press INC/+ button to increase the relative pressure, press the DEC/- button to decrease the relative pressure, press and hold INC/+ button over 3 seconds you can quickly increase the relative pressure, press and hold the DEC/- buttons more than 3 seconds you can quickly decrease the relative air pressure;

### (4) High air pressure alarm setting

In this mode, adjust high air pressure alarm settings, press SET button to allow or prohibit high pressure alarm, press INC/+ button to increase high pressure alarm value, press the DEC/- button to decrease high pressure alarm value, Press and hold INC/+ button you can quickly increase the high pressure alarm value, press and hold the DEC/- button more than 3 seconds you can quickly decrease high pressure alarm value;

### (5) Low air pressure alarm setting

In this mode, adjust low air pressure alarm settings, press SET button to allow or prohibit Low pressure alarm, press INC/+ button to increase low pressure alarm value, press the DEC/- button to decrease low pressure alarm value, Press and hold INC/+ button you can quickly increase the low pressure alarm value, press and hold the DEC/- button more than 3 seconds you can quickly decrease low pressure alarm value;

### (6) Maximum air pressure display

In this mode, user can view maximum air pressure and time records, press and hold SET button over 3 seconds to clear the maximum record;

### (7) Minimum air pressure display

In this mode, user can view minimum air pressure and time records, press and hold SET button over 3 seconds to clear the minimum record;

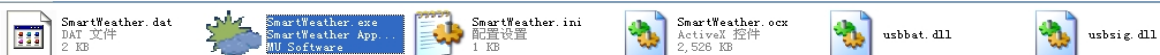
## 13. Pressure Histogram Mode

In pressure mode, press MODE button to enter the pressure histogram mode, in this mode user can proceed pressure histogram timeline set:

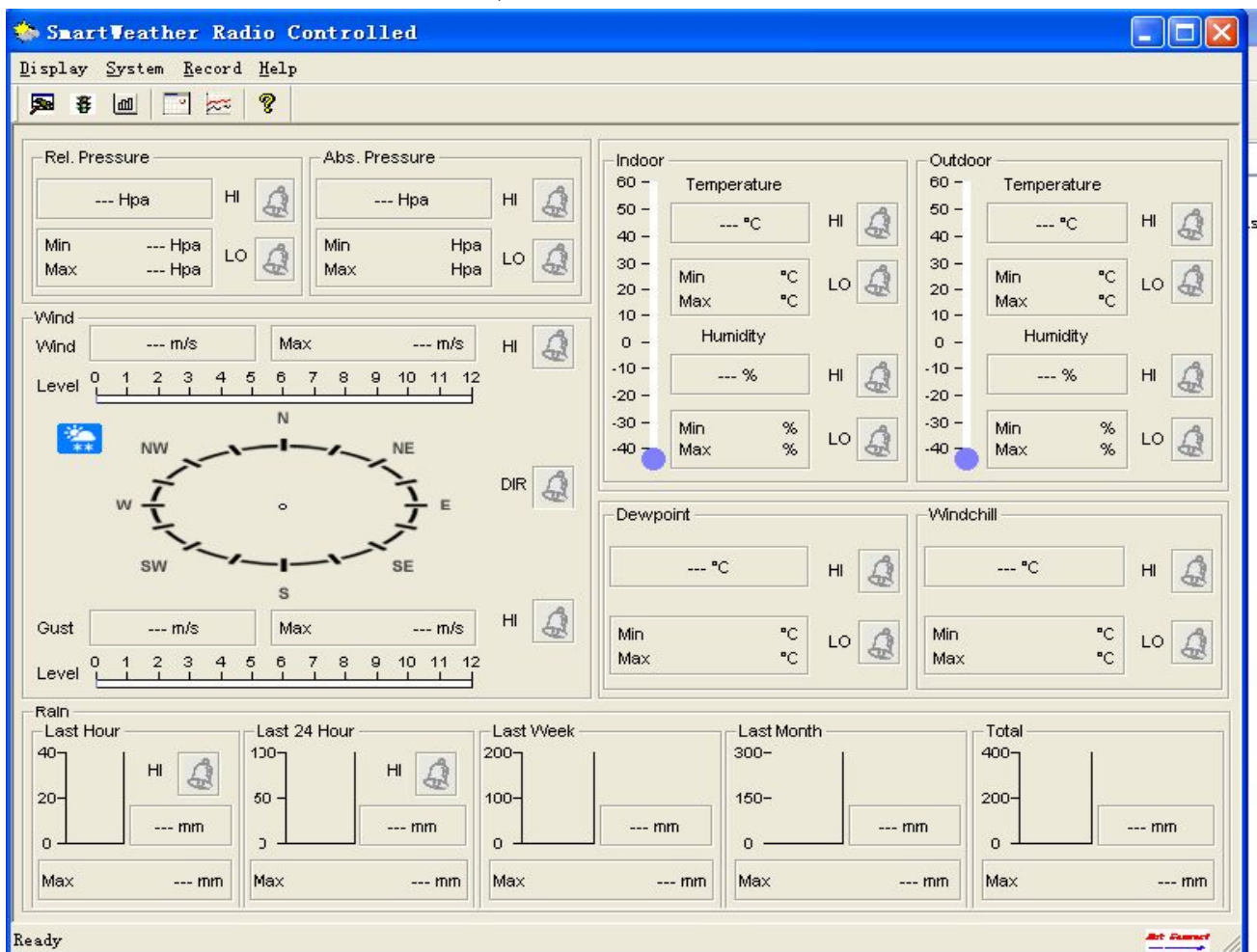
In this mode user can adjust pressure histogram timeline settings, press INC/+ or DEC/- button can switch in 12 hours display and 24 hours display;

## 14. SmartWeather software

SmartWeather software is no installation of green software, users just need to copy it to your PC, double-click the package SmartWeather.exe file can start SmartWeather software.



SmartWeather software starts as follows.;



If base station connect failure through USB cable to your computer, then right corner display

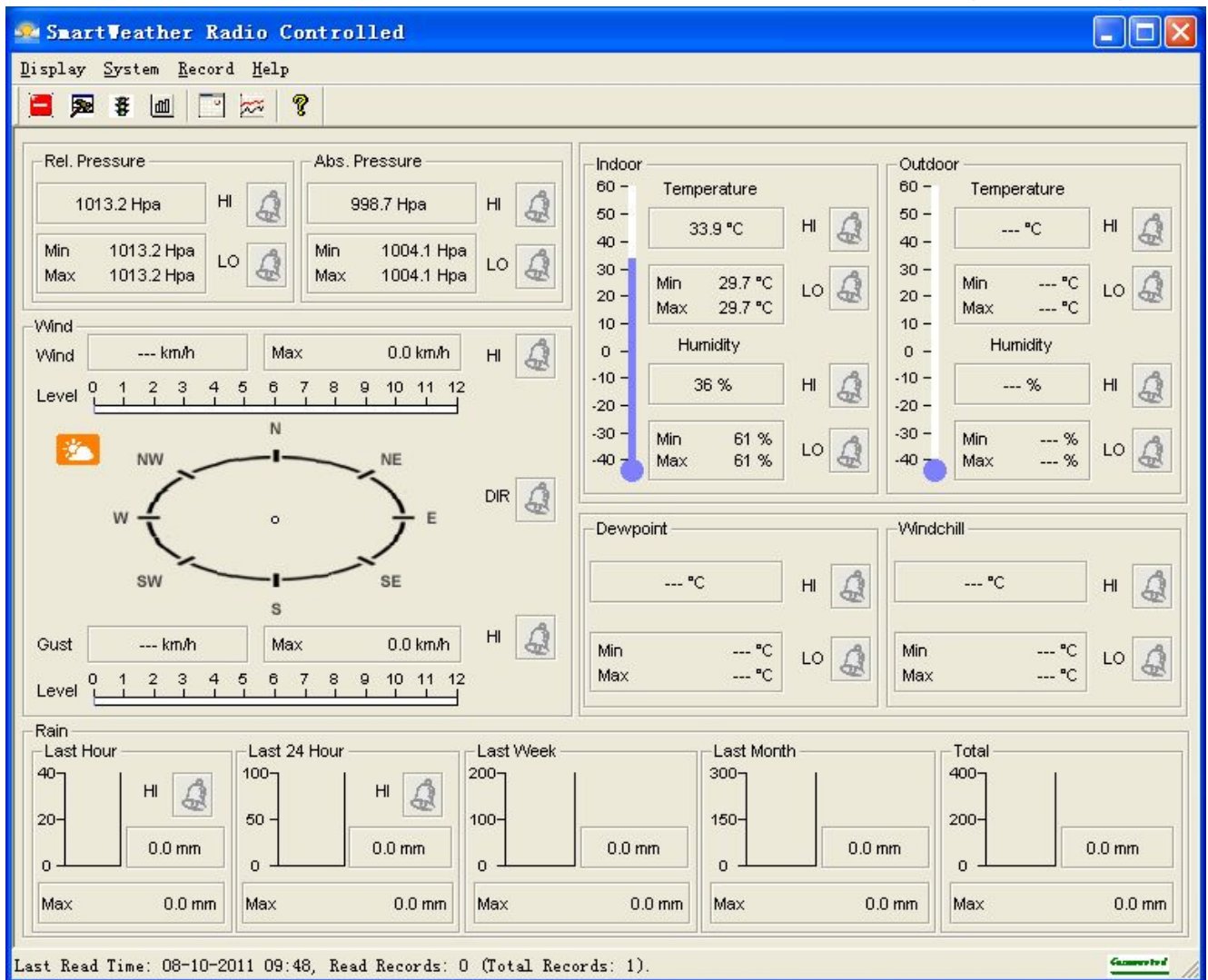



if connecting successfully, you can hear computer issued a “drip” sound and right corner display

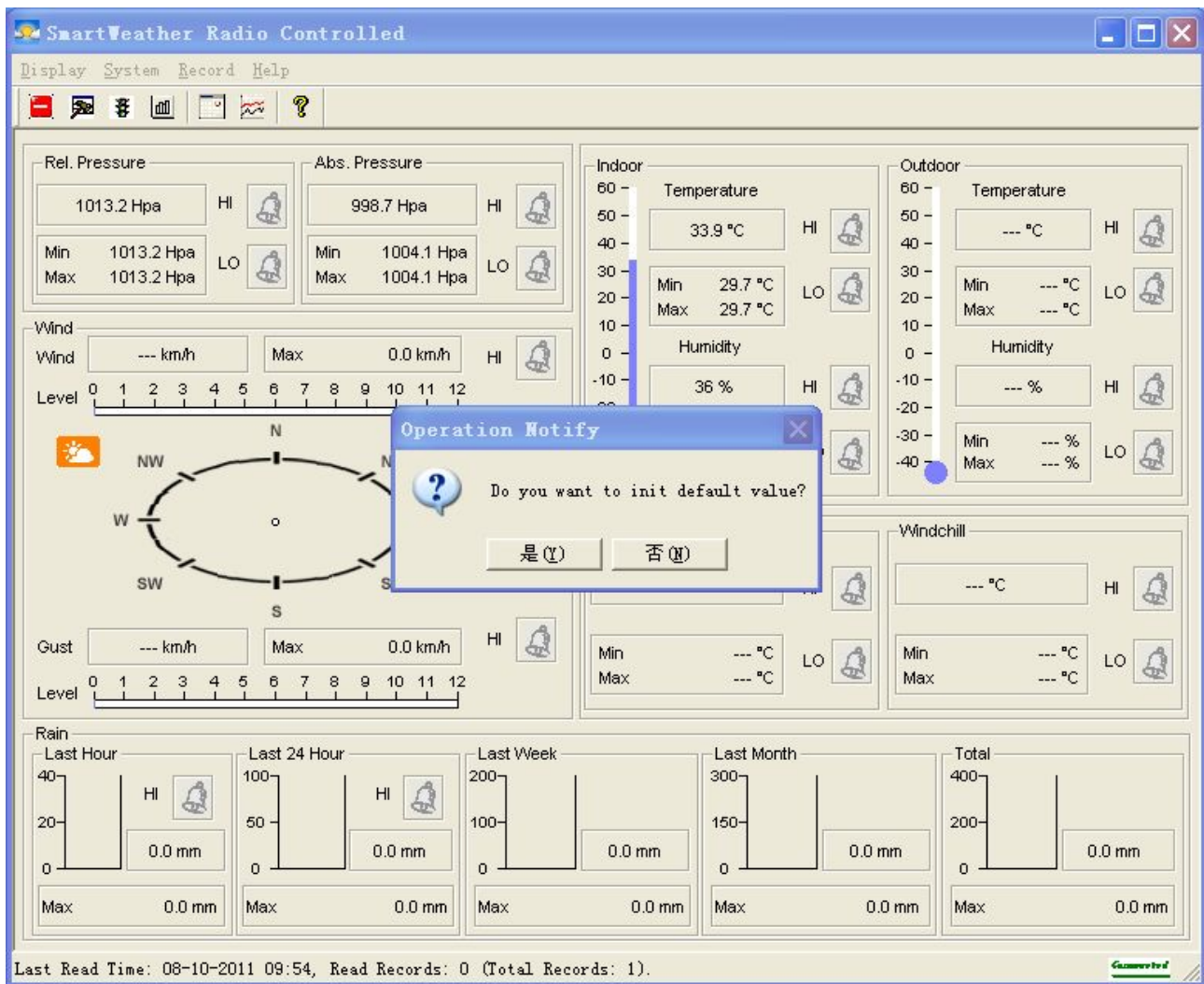


indicating communication successfully, software will read current data from base station and display on software screen, also automatically download all historical data records, the bottom of the screen display

the download time of historical data and number of records historical data downloading, as following.



Click the icon of , user can enter the restore default parameters confirmation screen, as shown below:



Note: this function only use in receiver appear abnormal conditions. After clicking ok button to choose restore default value, continue to put receiver connected to computer, waiting for two minutes later restore default completed, receiver will remove previous history data.

## Specification:

### 1. Receiver:

- (1) Temperature range: 0°C ~ 50°C (32°F ~ 122°F);  
 Temperature accuracy:  $\pm 1^{\circ}\text{C}$   
 Temperature resolution: 0.1°C;
- (2) Humidity range: 20%~99%;  
 Humidity accuracy:  $\pm 5\%$   
 Humidity resolution: 1%(condition: temperature 25°C, humidity 50%);
- (3) Pressure range: 920~1080hPa;  
 Pressure accuracy:  $\pm 5\text{hPa}$   
 Pressure resolution: 0.1 hPa;
- (4) Transmission data update: 48s;
- (5) Alarm: 2 minutes
- (6) Power: 3\*1.5V AA battery;

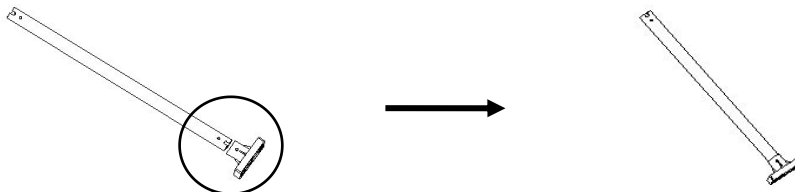
- (7) Battery life: about 12 months
- (8) Low battery check: power-on check, 00:00 check every day.
- (9) Work temperature: 0°C to 50°C

## 2. Outdoor transmitter:

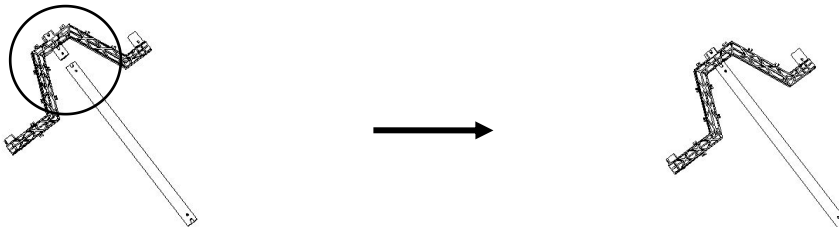
- (1) Temperature range: -40°C ~ 60°C (-104°F ~ 140°F);  
Temperature accuracy:  $\pm 1^{\circ}\text{C}$   
Temperature resolution: 0.1°C;
- (2) Humidity range: 20%~99%;  
Humidity accuracy:  $\pm 5\%$   
Humidity resolution: 1%
- (3) Wind speed range: 0~50m/s;  
Wind speed resolution: 0.1 m/s;
- (4) Rain range: 0~9999mm;  
Rain resolution: 0.1mm(rainfall<1000 mm);  
1 mm(rainfall>1000 mm);
- (5) Data update: 48s;
- (6) Power: 2\*1.5V AA battery;
- (7) Battery life: about 24months;
- (8) Low battery check: power-on check, 00:00 check every day.
- (9) Work temperature: -40°C ~ 60°C (-104°F ~ 140°F);
- (10) Anti-rainy

## Setting Up Guide:

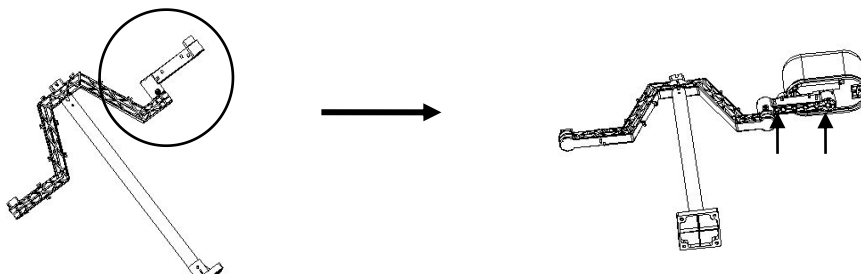
1. Insert the stainless steel pipe into the base, press a M3 screw nut into the nut slot, and then establish them with a PM3.0\*25mm screw:



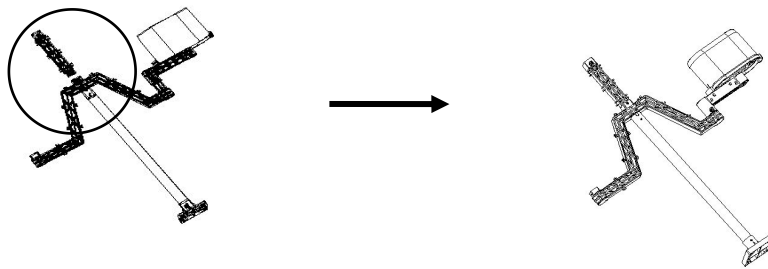
2. Insert the transmitter holder into the stainless steel pipe, establish them with a PM3.0\*22mm screw and a M3 screw nut:



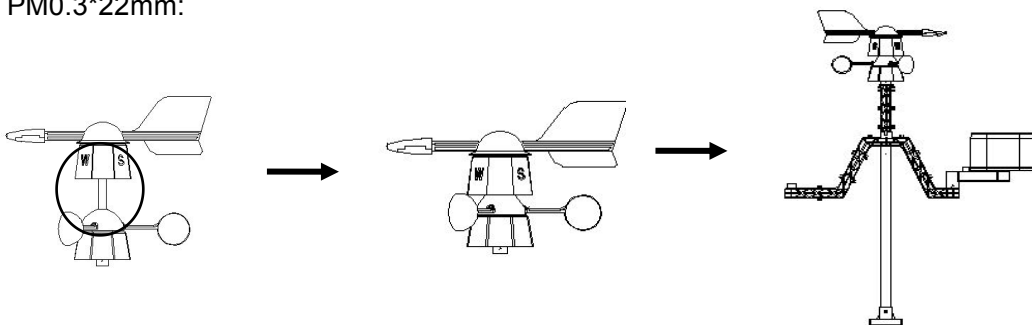
3. Insert the rain gauge holder onto the short side of the transmitter holder, establish them via a PM3.0\*25mm screw and a M3 screw nut. Then install the rain gauge onto the rain gauge holder, and establish them with two PA3.0\*8mm screws:



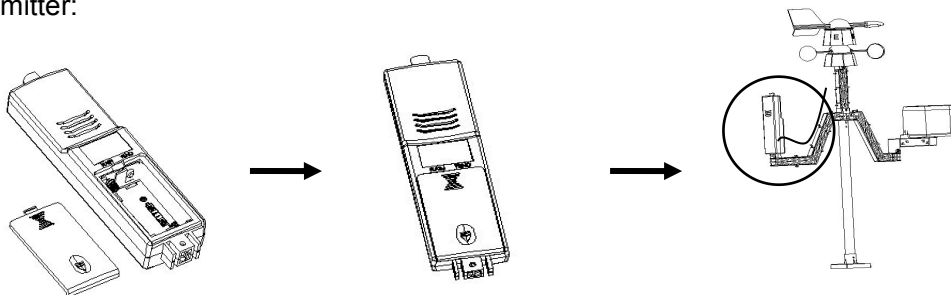
4. Press a M3 screw nut into the nut slot of the small side of the wind sensor holder, insert wind sensor holder onto the transmitter holder, establish them with a PM3.0\*22mm screw:



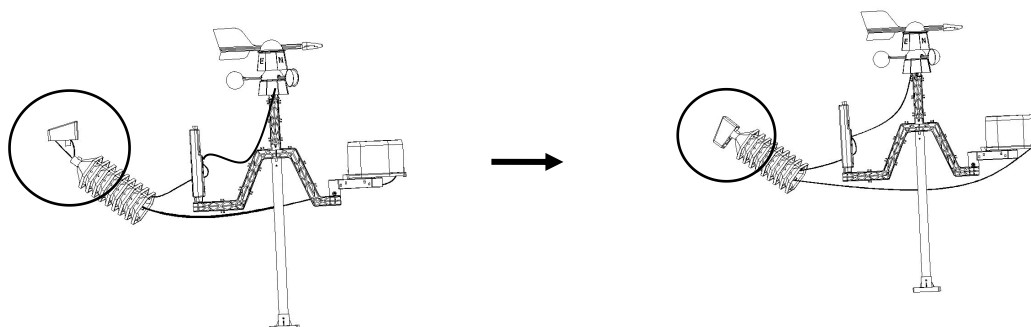
5. Insert the wind direction component into the wind speed component, and then insert the wind direction RJ45 into the 623K hole of the wind speed component. Insert a M3 screw nut into the big side of the wind sensor holder, and then install the whole wind sensor onto the holder, establish them with a PM0.3\*22mm:



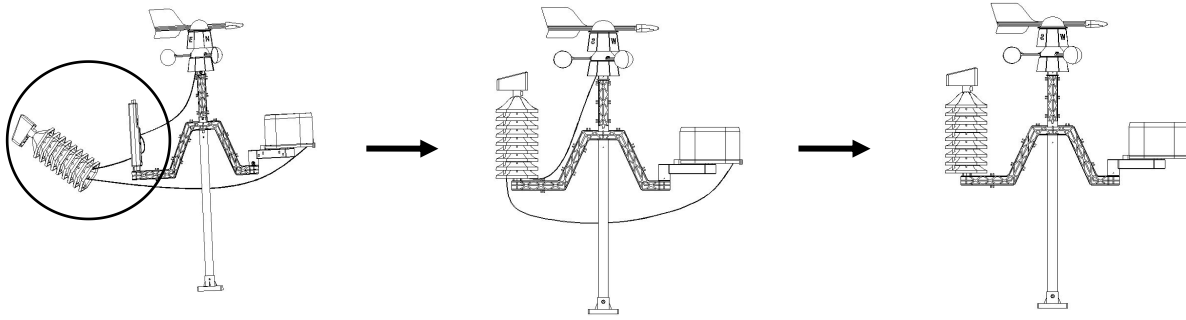
6. Open the battery compartment, install the rechargeable batteries, then cover the battery door. Insert the whole transmitter onto the long side of the transmitter holder, and establish them with a PM3.0\*18mm screw. At last, insert the wind speed wire RJ45 into the "WIND" 623K hole of the transmitter:



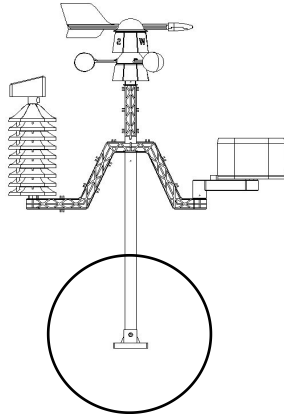
7. ① Put the rain gauge wire across the waterproof tower case, and then insert the RJ45 into the 623K hole of the solar component;
- ② Put the solar wire across the waterproof tower case, and then insert the RJ45 into the "RAIN" 623K hole of the transmitter;
- ③ Insert a M3 screw nut into the top nut slot of the waterproof tower case, then insert the solar component into the top of the waterproof tower case, establish them with a PM3.0\*8mm screw (Note: insert the screw from the screw nut side of the solar component):



8. Suit the assembled waterproof tower case onto the assembled transmitter, and then suit the wires onto the slots of the transmitter holder:



9. Suit four green plastic screw nuts into the base, and then establish the base and ground with four KA4.0\*40mm screws:



### Note:

1. Dew point temperature display  $-40^{\circ}\text{C}$ , indicating dew point temperature is already very low and do not represent the actual dew point temperature;
2. When battery low voltage warning, in order to protect the system, some features may not be normal use, to prevent the system crash please replace new battery timely;
3. When the battery low voltage warning, avoid connecting the unit to the PC to prevent the memory data loss, user can replace the new battery and then connect again to guarantee reliable communication;
4. Data communication is completed, disconnect the PC connection, in order to avoid data communications may be influence normal working.

### FCC Statement

Changes or modifications not expressly approved by the party responsible for compliance could void the user's authority to operate the equipment.

This equipment has been tested and found to comply with the limits for a Class B digital device, pursuant to Part 15 of the FCC Rules. These limits are designed to provide reasonable protection against harmful interference in a residential installation. This equipment generates uses and can radiate radio frequency energy and, if not installed and used in accordance with the instructions, may cause harmful interference to radio communications. However, there is no guarantee that interference will not occur in a particular installation. If this equipment does cause harmful interference to radio or television reception, which can be determined by turning the equipment off and on, the user is encouraged to try to correct the interference by one or more of the following measures:

- Reorient or relocate the receiving antenna.
- Increase the separation between the equipment and receiver.
- Connect the equipment into an outlet on a circuit different from that to which the receiver is connected.
- Consult the dealer or an experienced radio/TV technician for help

This device complies with part 15 of the FCC rules. Operation is subject to the following two conditions (1) this device may not cause harmful interference, and (2) this device must accept any interference received, including interference that may cause undesired operation.