

# Wireless Pool Swimming Thermometer

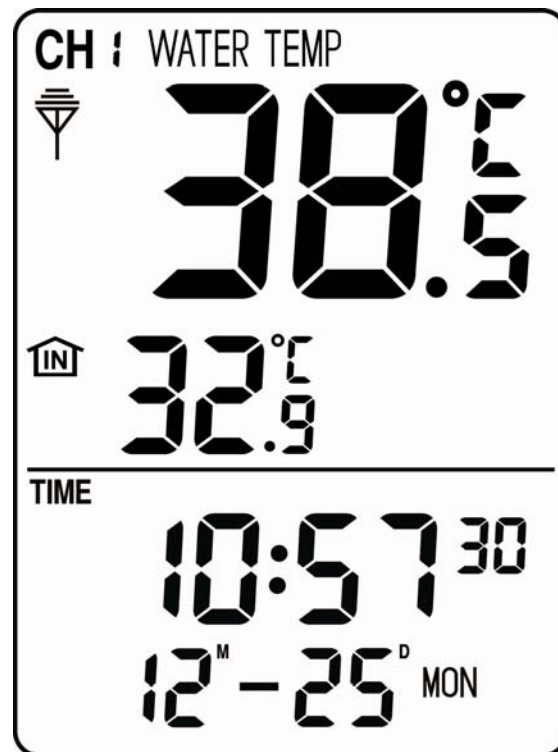
WT0222



WT0224



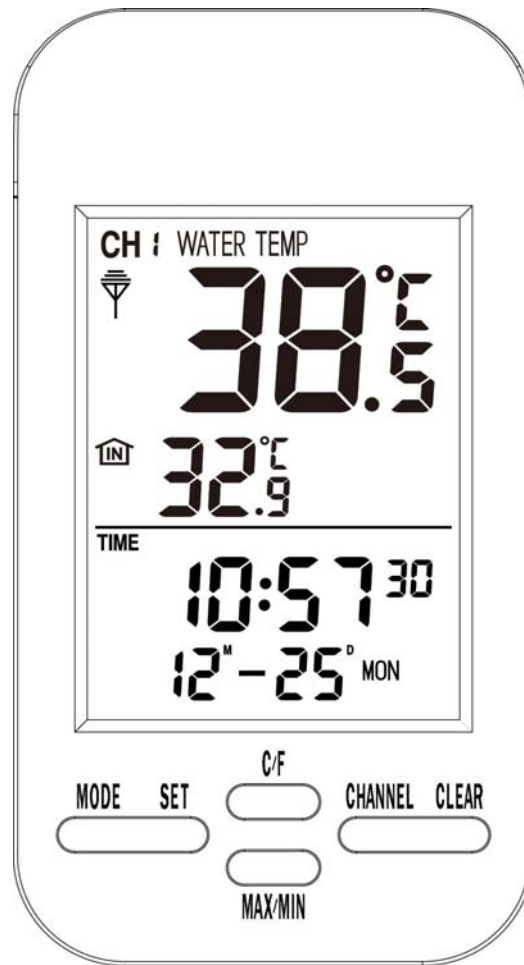
## Receiver



- LCD Display

1. Water temperature
2. Indoor temperature
3. Clock
4. Date
5. Week
6. Alarm
7. Max/Min record of indoor temperature & water temperature;
8. Receiver with 433MHz frequency can receive water temperature from 3 channels

## ● Front View



## ● Buttons Configuration

1. [MODE] button: press [MODE] button to switch and enter in model of alarm, date and clock.
2. [SET] button: press [SET] button to enter in setting mode.
3. [C/F] button: press [C/F] to switch temperature unit between °F and °C.
4. [MAX/MIN] button: press [MAX/MIN] to review max/min records to temperature.
5. [CHANNEL] button: press [CHANNEL] to switch channel

among CH1, CH2 & CH3.

6. [CLEAR] button: Clear temperature record in max/min temperature record display by pressing [CLEAR] button.

### ● **Operation Setting**

Power on the receiver with full display for 2 seconds and a beep indicates starting normal display, and immediately monitor indoor temperature and search receiving water temperature.

### **Clock setting**

- (1) In normal display mode, press [SET] button to set clock.
- (2) The being set data will flash with 1HZ frequency.
- (3) The setting sequence: 12/24→Hour→Minute→Second
- (4) Press [MODE] to exist setting mode when finished setting.
- (5) Press [C/F] to increase the setting value.
- (6) Press [MAX/Min] button to decrease the setting value.
- (7) Press [EXIT] button to save the setting and return normal display mode.
- (8) In the setting mode, it will return the normal display mode if there is any operation within 30 seconds.

### **Alarm setting.**

- (1) In the normal display mode, press [MODE] button to enter in Clock and start setting by pressing [SET].
- (2) The being set column flashes with 1HZ frequency.
- (3) The setting sequence: Hour→Minute→Alarm on/Off

- (4) Press [MODE] button to exit setting after finish setting.
- (5) Press[C/F] button to increase the setting value
- (6) Press[MAX/Min] button to decrease the setting value.
- (7) Press [EXIT] to save the setting and return normal display mode.
- (8) In the setting mode, it will return the normal display mode if there is any operation within 30 seconds.

Remark: in the clock setting mode, press [C/F] button to turn on/off alarm.

### **Date setting**

- (1) In the normal display mode, press[MODE] button , and then press [SET] Button to set date.
- (2) The being set column flashes with frequency of 1HZ.
- (3) The setting sequency is Year→Month→Day
- (4) Press [MODE] button to save setting after finish setting.
- (5) Press [C/F] button to increase the setting value.
- (6) Press [Max/Min] button to decrease the setting value.
- (7) Press[EXIT] to save the setting and exit the setting mode.
- (8) In the setting mode, it will return normal display mode if there is not any operation within 30 seconds.

### **Specification**

- 1. Indoor Temperature range: 0℃ to 50℃, Accuracy:±1℃
- 2. Water temperature: 0℃ to 60℃, Accuracy:±1℃
- 3. RF working distance: within 100m in open space.

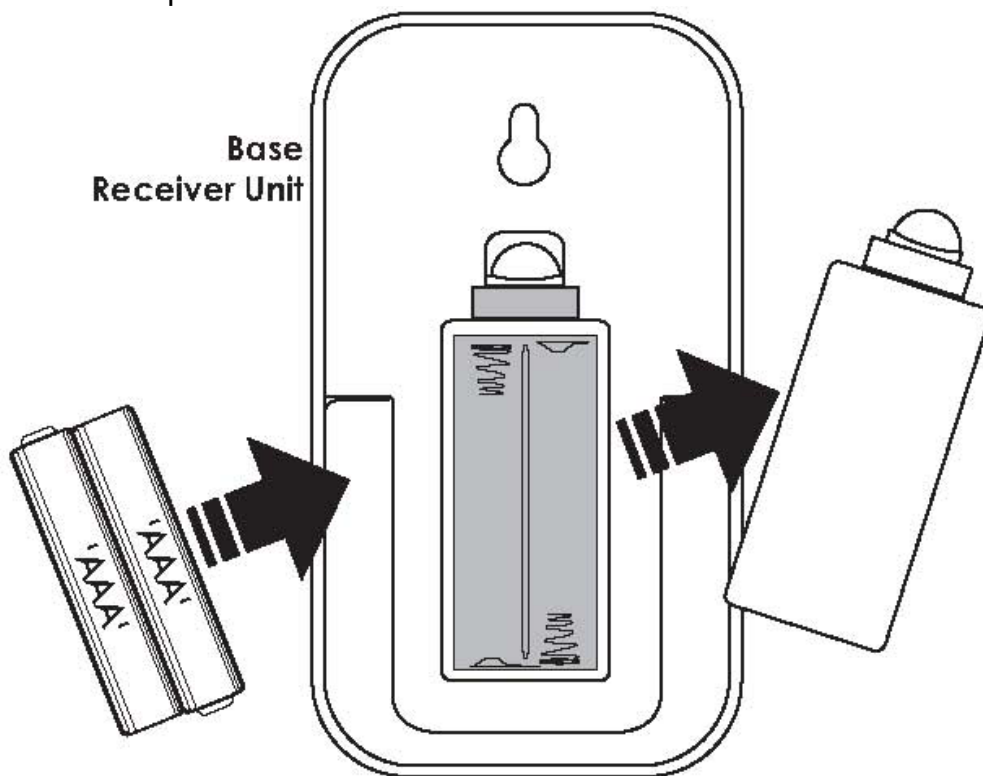
4.Data updating: 30 seconds/per time.

### **Factory Setting**

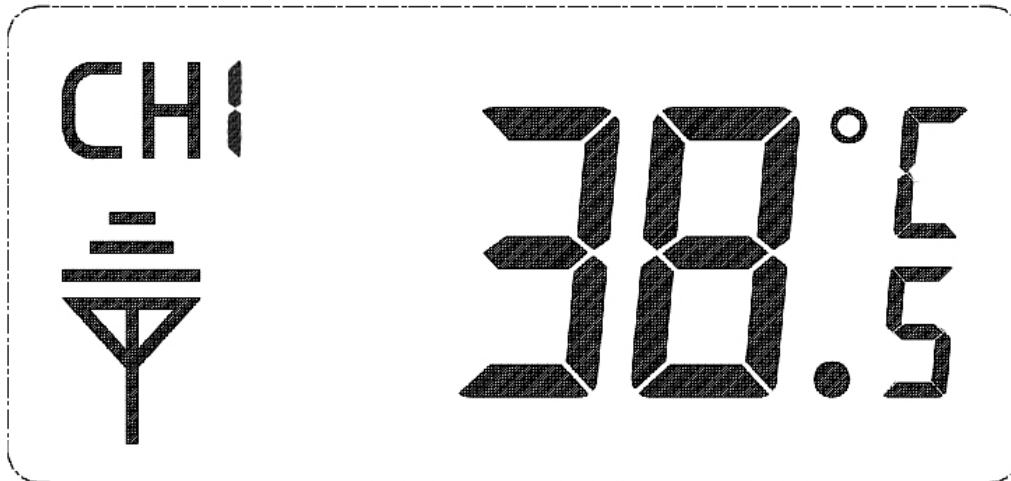
- 1、 Time: January 1, 2004, AM12:00:00
- 2、 12 hour format
- 3、 Alarm: AM12:00
- 4、 Alarm status: OFF
- 5、 Channel of water temperature: CH1
- 6、 Max/Min temperature record of indoor temperature and water temperaure: NO
7. RF Receiver can receiver water temperature from 3 channels.

### **Power consumption**

- 1、 Alkaline battery: 2x AAA 1.5V
- 2、 Batteries life span: 12 month



## Transmitter



### ● Feature

- 1、 0°C to +60°C water temperature monitoring
- 2、 Temperature unit: °F/°C
- 3、 Frequency: RF 433MHz, Working Distance: 100m in open space
- 4、 Channel for option: CH1, CH2 & CH3
- 5、 Solar panel charges batteries if rechargeable batteries are used(This function only applies to WT0224, WT0222 has not this function)

### ● Operation:

Temperature monitor and data transmitter

- 1、 Interval of data transmitting: 30seconds
- 2、 Where data is transmitting, there is signal icon on the LCD and meanwhile the LED light flashes.

### ● Switches description

Taking the following chart to set channel, temperature unit and turn on solar charging function accordingly (the machine must has solar

panel and use rechargeable batteries if you turn on solar charging function, Otherwise, pls keep solar switch in off position).

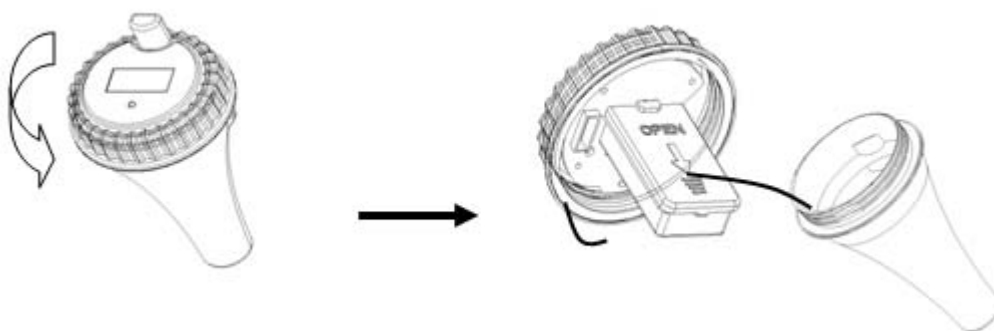
Channel Switch		°C/°F Switch	Solar Switch
1 ↓	2 ↓	3	4
CH1 ON		↓ : °F	↓ : <b>Solar off</b>
1 ↑	2 ↓		
CH2 ON		↑ °C	↑ : <b>Solar on</b>
1 ↓	2 ↑		
CH3 ON			

### ● Power supply

- 1、 Alkaline battery or rechargeable battery: 2×AA 1.5V
- 2、 Battery life span: alkaline battery 12 months  
Rechargeable battery 2 year.

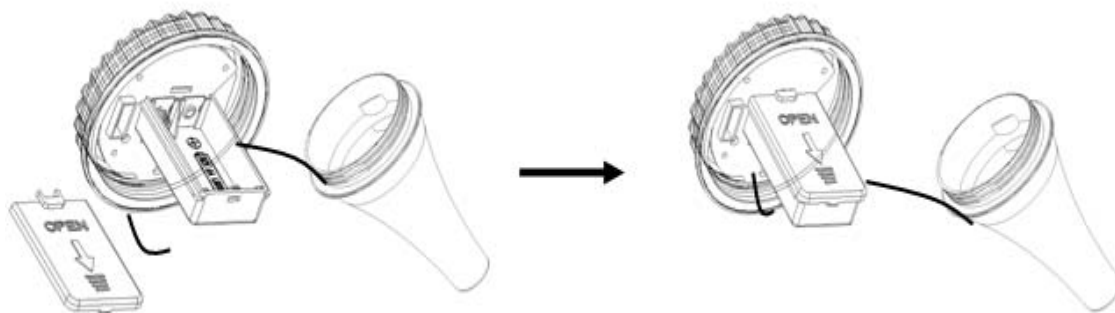
### ● Battery Installation Instruction

1. Twist off the cover of the transmitter, then take out the battery compartment:

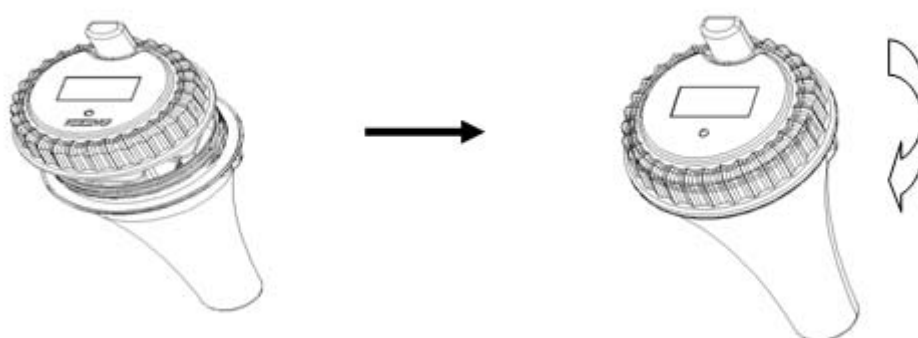


2. Open the cover of battery compartment, install batteries, then close the battery cover:





3. Install the waterproof loop, then close and tighten the cover of the transmitter.



#### FCC Statement

Changes or modifications not expressly approved by the party responsible for compliance could void the user's authority to operate the equipment.

This equipment has been tested and found to comply with the limits for a Class B digital device, pursuant to Part 15 of the FCC Rules. These limits are designed to provide reasonable protection against harmful interference in a residential installation. This equipment generates uses and can radiate radio frequency energy and, if not installed and used in accordance with the instructions, may cause harmful interference to radio communications. However, there is no guarantee that interference will not occur in a particular installation. If this equipment does cause harmful interference to radio or television reception, which can be determined by turning the equipment off and on, the user is encouraged to try to correct the interference by one or more of the following measures:

- Reorient or relocate the receiving antenna.
- Increase the separation between the equipment and receiver.
- Connect the equipment into an outlet on a circuit different from that to which the receiver is connected.
- Consult the dealer or an experienced radio/TV technician for help

This device complies with part 15 of the FCC rules. Operation is subject to the following two conditions (1) this device may not cause harmful interference, and (2) this device must accept any interference received, including interference that may cause undesired operation.