

Limited 90-Day Warranty Information

Timex Audio Products, a division of SDI Technologies Inc. (hereafter referred to as SDI Technologies), warrants this product to be free from defects in workmanship and materials, under normal use and conditions, for a period of 90 days from the date of original purchase. Should service be required by reason of any defect or malfunction during the warranty period, SDI Technologies will repair or, at its discretion, replace this product without charge (except for a \$10.00 charge for handling, packing, return UPS/postage, and insurance). This decision is subject to verification of the defect or malfunction upon delivery of this product to the Factory Service Center listed below. The product must include proof of purchase, including date of purchase. The fee for service after the warranty period or without proof of purchase is \$30.00.

Before returning this product for service, please first replace the batteries (if applicable) with fresh ones, as exhausted or defective batteries are the most common cause of problems encountered.

If service is still required:

1. Remove batteries (if applicable) and pack the unit in a well-padded, heavy corrugated box.
2. Enclose a photocopy of your sales receipt, credit card statement, or other proof of the date of purchase.
3. Enclose a check or money order payable to the order of SDI Technologies, Inc. for the sum of \$10.00 (or \$30.00 if after the warranty period or without proof of purchase).
4. Send the unit prepaid to the Factory Service Center listed below:

Consumer Repair Department
 SDI Technologies Inc.
 Timex Audio Products Division
 1330 Goodyear Drive
 El Paso TX 79936-6420

NOTE: This warranty is valid only if the product is used for the purpose for which it was designed. It does not cover (i) products which have been damaged by negligence, misuse or accident, or which have been modified or repaired by unauthorized persons; (ii) cracked or broken cabinets, or units damaged by excessive heat; (iii) damage to tape cassettes (if applicable); (iv) the cost of shipping this product to the Factory Service Center and its return to the owner.

This warranty is valid only in the United States of America and does not extend to owners of the product subsequent to the original purchaser. Any applicable implied warranties are also limited to 90 days, and SDI Technologies will not be liable for consequential damages. (Some states do not allow limitations on implied warranties or exclusion of consequential damages, so these restrictions may not apply to you.) This warranty gives you specific legal rights, and you may also have other rights which vary from state to state.

© 2007 SDI Technologies, Inc. All rights reserved
 TIMEX is a registered trademark of Timex Corporation the United States and other countries

Installation and Maintenance

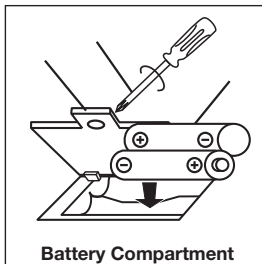
Installation

1. Remove the unit and all packing materials from the carton. You should save the packing materials in case unit needs to be returned for service. If you do not wish to save the materials, please dispose of them properly.
2. Place the unit on a stable, level surface, close to an AC outlet, out of direct sunlight, and away from sources of dust, dirt, heat, water, moisture, vibration, and strong magnetic fields.
3. After activating the backup (see below) and reading the Maintenance notes, plug the AC cord into an outlet.

"Sure Alarm" Battery Backup Installation

It is recommended that 2 "AA" batteries be installed into the unit, as directed below, to activate the "Sure Alarm" battery backup feature. In the event that the AC power cord is disconnected or a power failure or other interruption occurs, the "Sure Alarm" system will maintain clock and alarm settings for the life of the batteries, ensuring that the alarm will sound at the set time (Note: while operating on battery power, all set alarms will sound as a buzzer). When power is restored, the clock will cease using battery power, and will again operate on AC power. The Battery Low Indicator flashes when there is not enough power to run the backup.

1. Use a Phillips screwdriver to remove the battery compartment door.
2. Install 2 "AA" batteries (alkaline batteries are recommended for longer life) into the battery compartment, making sure that the + and - polarities match up with the diagram printed inside the compartment.
3. Close the battery compartment door and tighten the screw. Gently return the clock radio to its upright position.



Maintenance

1. Place the unit on a level surface away from sources of direct sunlight or excessive heat.
2. Protect your furniture when placing your unit on a natural wood and lacquered finish. A cloth or other protective material should be placed between it and the furniture.
3. Clean your unit with a soft cloth moistened only with mild soap and water. Stronger cleaning agents, such as Benzine, thinner or similar materials can mar the surface of the case.
4. If the unit is not to be used for a prolonged period, such as a month or longer, remove the batteries to prevent possible corrosion. Should the battery compartment become corroded or dirty, clean the compartment thoroughly and replace the batteries.

A Consumer Guide to Product Safety

IMPORTANT SAFETY INSTRUCTIONS

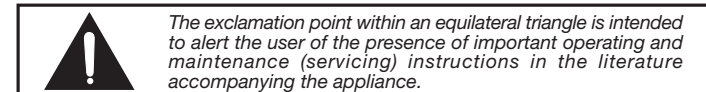
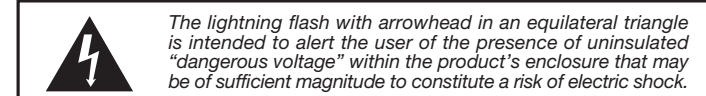
This unit has been designed and manufactured to assure your personal safety. Improper use can result in potential electrical shock or fire hazards. Please read all the safety and operating instructions carefully before installation and use. Keep these instructions handy for future reference. Take special note, adhere to all warning, and always follow the instructions on the unit and in the instructions and service manuals.

1. **Water and Moisture** - The unit should not be used near water. For example: near a bathtub, washbowl, kitchen sink, laundry tub, swimming pool or in a wet basement.
2. **Ventilation** - The unit should be situated so that its location or position does not interfere with its proper ventilation. For example, it should not be situated on a bed, sofa, rug or similar surface that may block ventilation openings. Also, it should not be placed in a built-in installation, such as a bookcase or cabinet that may impede the flow of air through the ventilation openings.
3. **Heat** - The unit should be situated away from heat sources such as radiators, heat registers, stoves or other appliances (including amplifiers) that produce heat.
4. **Power Sources** - The unit should be connected to a power supply only of the type described in the operating instructions or as marked on the appliance.
5. **Grounding or Polarization** - This product is equipped with a polarized alternating current line plug (a plug having one blade wider than the other). As a safety feature this plug will fit into the power outlet only one way. If you are unable to fit the plug fully into the outlet, try reversing the plug. If the plug still fails to fit, contact your electrician to replace your obsolete outlet. Do not defeat the safety purpose of the polarized plug.
6. **Power-Cord Protection** - Power supply cords should be routed so that they are not likely to be walked on or pinched by items placed upon or against them. It is always best to have a clear area from where the cord exits the unit to where it is plugged into an AC outlet.
7. **Cleaning** - Unplug this product from the wall outlet before cleaning. Do not use liquid cleaners or aerosol cleaners. Use a damp cloth for cleaning.
8. **Non-Use Periods** - The power cord of the unit should be unplugged from the outlet when it is to be left unused for a long period of time.
9. **Objects and Liquid Entry** - Care should be taken so that objects do not fall and liquids are not spilled into the enclosure through openings.
10. **Attachments** - Do not use attachments not recommended by the product manufacturer as they may cause hazards.
11. **Lightning** - For added protection for this product during a lightning storm, or when it is left unattended and unused for long periods of time, unplug it from the wall outlet and disconnect the antenna or cable system. This will prevent damage to the product due to lightning and power-line surges.
12. **Overloading** - Do not overload wall outlets, extension cords, or integral convenience receptacles as this can result in a risk of fire or electric shock.
13. **Damage Require Service** - The unit should be serviced by qualified service personnel when:
 - A. The power supply cord or plug has been damaged.
 - B. Objects have fallen into or liquid has been spilled into the enclosure.
 - C. The unit has been exposed to rain.
 - D. The unit has been dropped or the enclosure damaged.
 - E. The unit does not appear to operate normally or exhibits a marked change in performance.
14. **Servicing** - The user should not attempt to service the unit beyond that described in the user's operating instructions. All other servicing should be referred to qualified service personnel.
15. **Safety Check** - Upon completion of any service or repairs to this product, ask the service technician to perform safety checks to determine that the product is in proper operating condition.
16. **Antenna** - Do not connect to an external antenna.



CAUTION: TO REDUCE THE RISK OF ELECTRIC SHOCK, DO NOT REMOVE COVER (OR BACK). NO USER-SERVICEABLE PARTS INSIDE. REFER SERVICING TO QUALIFIED SERVICE PERSONNEL.

WARNING: TO REDUCE THE RISK OF FIRE OR ELECTRIC SHOCK, DO NOT EXPOSE THIS APPLIANCE TO RAIN OR MOISTURE.



The symbols above are located at the bottom of the cabinet.

CAUTION: To prevent electric shock, match wide blade of plug to wide slot. Fully insert.

ATTENTION: Pour éviter les choc électriques. Introduire la lame la plus large de la fiche dans la borne correspondante de la prises et pousser jusqu'au fond.

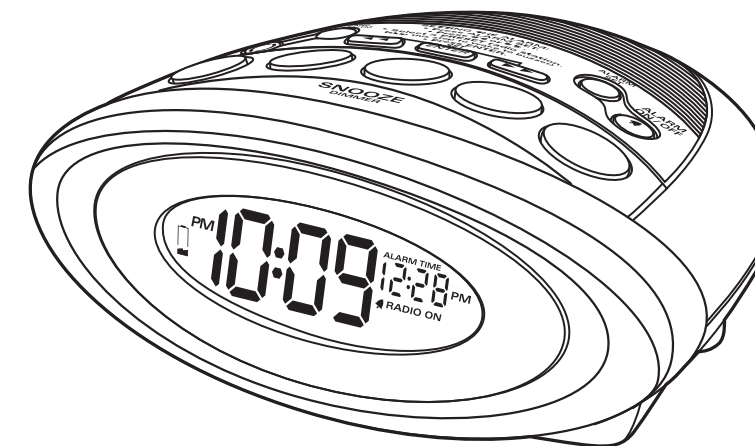
FCC Information

This device complies with part 15 of the FCC Rules. Operation is subject to the condition that this device does not cause harmful interference.

Note: The manufacturer is not responsible for any radio or TV interference cause by unauthorized modifications to this equipment. Such modification could void the user's authority to operate the equipment.



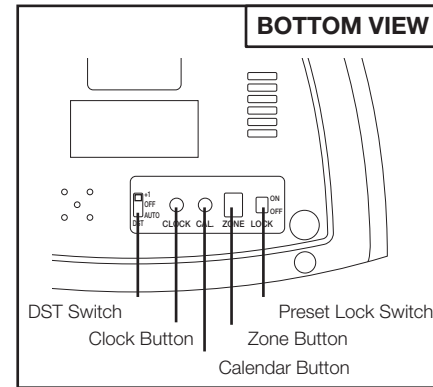
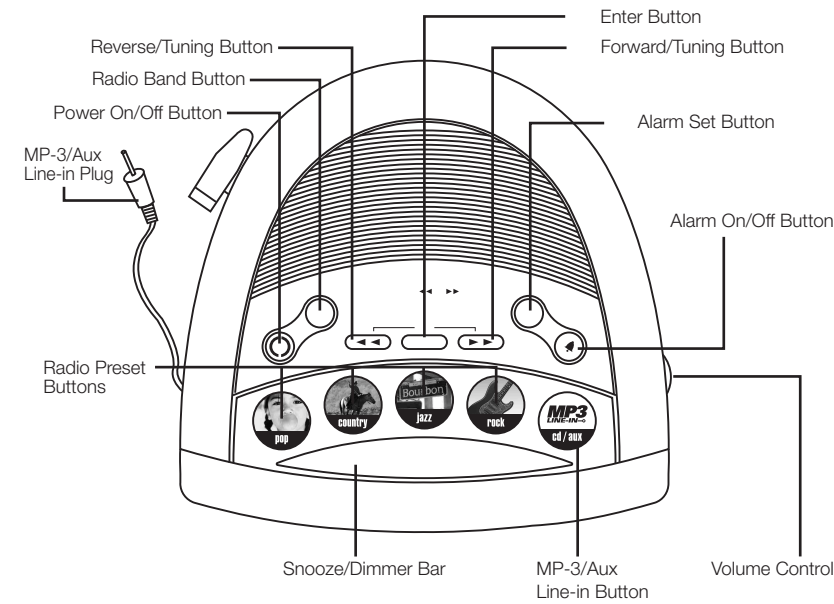
Model T1233
**Auto-Set
 Digital Tuning
 Alarm Clock Radio**



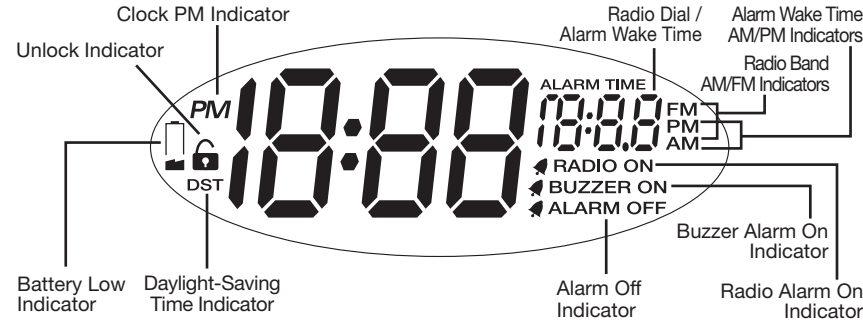
For additional information, online registration, and exclusive special offers please visit our website:

www.timexaudio.com

Controls and Indicators



Display with Indicators



Setting the Clock

Auto-Set and Manual Time and Date Settings

This model is equipped with the Auto-Set feature, meaning that the time and date have been programmed at the factory and will already be set when you first plug the model in. Auto-Set is programmed for Eastern Standard Time. To change your time zone setting, perform steps below.

- Slide the **Preset Lock Switch** to "Off". The Unlock Indicator will appear on the display.
- Press the **Zone Button**, the current Auto-Set Time Zone will flash. Press the **Reverse/Tuning** or **Forward/Tuning Button** to select your time zone. The display will show each zone's current time setting. There are seven zones.

Time Zones

ATL : Atlantic Standard Time	PAC: Pacific Standard Time
EAS: Eastern Standard Time	ALS: Alaska Standard Time
CEN: Central Standard Time	HAI: Hawaii Standard Time
MTN: Mountain Standard Time	

Manual Time and Date Settings

- To change the time setting, press the **Clock Button**. The clock display will flash. Press the **Reverse/Tuning** and **Forward/Tuning Button** to set the time. Hold a button for a few seconds to set the time rapidly. Be sure to set the correct AM/PM time, shown by the PM indicator.
- Press the **Enter Button**. The clock will beep twice and the display will stop flashing.

Daylight-Saving Time

- Depending on your living area and if Daylight Saving Time (DST) is observed, you can manually switch DST on (+1), OFF or use the AUTO setting.
- To manually turn on the DST function, just set the **DST Switch** to +1. The DST icon will appear and the time will advance 1 hour.
- To manually turn OFF the DST function, set the **DST Switch** to OFF. The time will go back 1 hour.
- Set the **DST Switch** to AUTO to have the unit automatically adjust the time at the beginning and end of Daylight Saving Time each year.

Programming the Preset Radio Stations

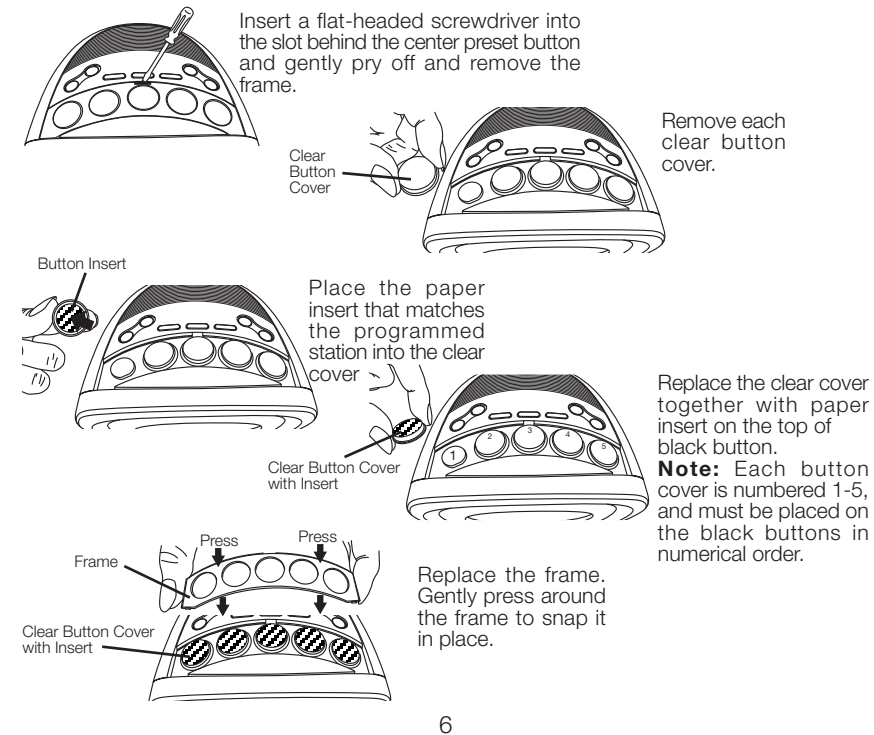
This unit has four Radio Preset Buttons for guests to find local stations. It also includes 12 insert pictures for the buttons, each showing a different radio station format (Jazz, Country, Rock, etc.). You should prepare or receive a list of four stations to program the settings.

- Press the **Power On/Off Button** to turn on the radio.
- Set the AM or FM band by pushing the **Radio Band Button**.
- Press either the **Reverse/Tuning** or **Forward/Tuning Button** to find the station. Hold a tuning button for a few seconds to scan the dial quickly.
- Press and hold a **Radio Preset Button** to set the station. The unit will beep twice.

Note: Extend the wire antenna for better FM reception.

Changing the Preset Button Inserts

This unit includes three sets of 12 Preset Button Paper Inserts, each showing a different radio station format (Jazz, Country, Rock, etc.). Follow these instructions to insert the inserts to match the programmed stations.



General Operating Instructions

Setting and Operating the Alarm

- Press the **Alarm Set Button**. The wake time on the display will flash.
- Press the **Reverse/Tuning** or **Forward/Tuning Button** to set the alarm time. Hold a tuning button for a few seconds to advance the time quickly.
- For wake to buzzer, press the **Enter Button** to set the alarm wake time. The unit will beep twice and the Buzzer Alarm On Indicator will appear, showing that the buzzer alarm will sound at the set time.
- For wake to radio, press one of the **Radio Preset Buttons** then **Enter Button** to set the alarm wake time. The unit will beep twice and the Radio Alarm On Indicator will appear, showing that the radio alarm will sound at the set time.
- When the alarm sounds, press the **Snooze/Dimmer Bar** for a 9-minute Snooze time, or press the **Alarm On/Off Button** to shut off the alarm. The Alarm Off Indicator will appear.

Note: Pressing **Alarm On/Off Button** while alarm is sounding turns off alarm. The **Alarm On/Off Button** also selects alarm mode.

Playing the Radio

- There are two ways to turn on the radio. Press one of the **Radio Preset Buttons** to listen to one of the preset stations, or press the **Power On/Off Button**. The radio frequency will appear on the display.
- Set the AM or FM band by pushing the **Radio Band Button**.
- Press either the **Reverse/Tuning** or **Forward/Tuning Button** to find the station. Hold a tuning button for a few seconds to scan the dial quickly.
- Rotate **Volume Control** to adjust volume level.
- Press **Power On/Off Button** to shut off the radio.

Note:

- Extend the wire antenna for better FM reception.
- Keep Fluorescent lamps away from unit as they may cause interference with radio.

Playing the MP-3 / Aux Line-in

- Connect your CD/ MP-3 Player or other device to the MP-3/Aux Line-in Plug.
- Press the **MP-3/Aux Line-in Button**. 'AU' will appear on the display.
- Turn the **Volume Control** to adjust the volume level.
- Press the **Power On/Off Button** to shut off unit. Remember to turn off your audio device, too.

Adjusting the Display Backlight

This alarm clock radio features an adjustable display backlight, with dim, medium, and bright settings. To select a backlight setting, press the **Snooze/Dimmer Bar** until desired brightness is reached.