



fastrack
REFLEX BEAT+

1.69" UltraVU Display
60 Multisports
Advanced Health Tracking

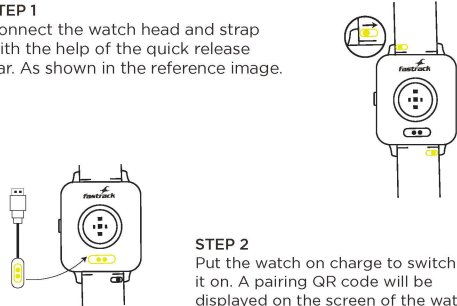
For detailed instructions on how to operate, download the user manual by scanning the QR code below.



Scan QR Code to download the **Fastrack Reflex World** app



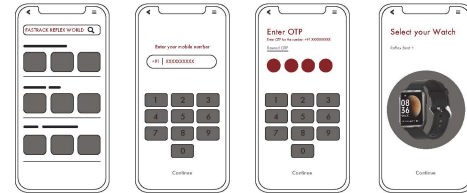
STEP 1
Connect the watch head and strap with the help of the quick release bar. As shown in the reference image.



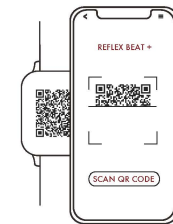
STEP 2
Put the watch on charge to switch it on. A pairing QR code will be displayed on the screen of the watch.

STEP 3
Scan the QR Code to download the app or download and install the FASTRACK REFLEX WORLD app from the App store or Play store. Sign up/ Log in with your mobile number and enter the OTP. You are now logged in to enjoy the Fastrack Reflex World app.

Tap allow to give all the app permissions.



STEP 4
Open the app on your phone and scan the pairing QR code on the watch screen. The watch will get automatically paired.



The product is covered under one year warranty against manufacturing defects as per the details mentioned in the product manual inside the box.

Reach us for any assistance or feedback to our Customer Care at **1800-266-0123** or email us at **customercare@titan.co.in**

www.fastrack.in

FCC Caution:

This device complies with part 15 of the FCC Rules. Operation is subject to the following two conditions: (1) This device may not cause harmful interference, and (2) this device must accept any interference received, including interference that may cause undesired operation.

Any Changes or modifications not expressly approved by the party responsible for compliance could void the user's authority to operate the equipment.

Note: This equipment has been tested and found to comply with the limits for a Class B digital device, pursuant to part 15 of the FCC Rules. These limits are designed to provide reasonable protection against harmful interference in a residential installation. This equipment generates uses and can radiate radio frequency energy and, if not installed and used in accordance with the instructions, may cause harmful interference to radio communications. However, there is no guarantee that interference will not occur in a particular installation. If this equipment does cause harmful interference to radio or television reception, which can be determined by turning the equipment off and on, the user is encouraged to try to correct the interference by one or more of the following measures:

- Reorient or relocate the receiving antenna.
- Increase the separation between the equipment and receiver.
- Connect the equipment into an outlet on a circuit different from that to which the receiver is connected.
- Consult the dealer or an experienced radio/TV technician for help.

The device has been evaluated to meet general RF exposure requirement. The device can be used in portable exposure condition without restriction.