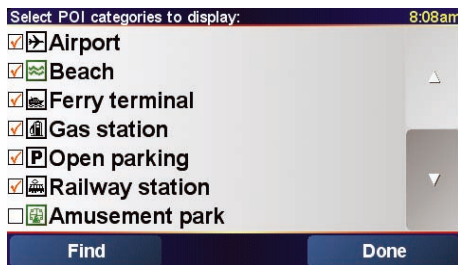


EN

Points of Interest



Points of Interest or POIs are interesting places on the map. Here are some examples:

- Restaurants
- Hotels
- Museums
- Parking garages
- Gas stations

Showing POIs on the Map

1. Tap **Enable/disable POIs** in the Preferences menu.
2. Select the POI categories to display on the map.
3. Tap **Done**.

The POIs you selected are shown on the map as symbols.

Calling a POI

Your TomTom GO knows the phone numbers for many POIs. You can, for example, call a restaurant to book a table or a movie theater to book tickets.

For information about using your TomTom GO for hands-free calling, see **Hands-Free Calling** on page 16.

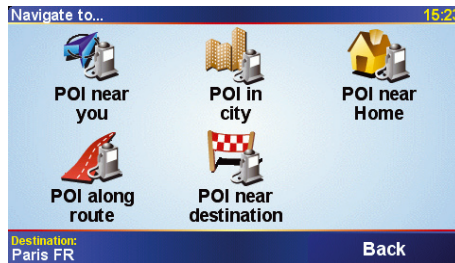
Points of Interest

Navigating to a POI

You can use a POI as your destination. For example, if you are traveling to a city you aren't familiar with, you could navigate to a parking garage there.

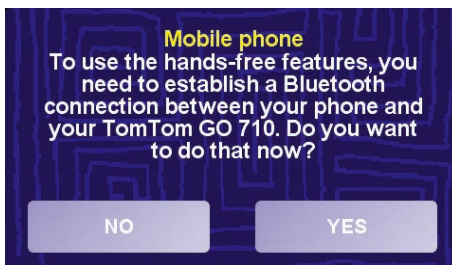
1. Tap **Navigate to...** in the Main Menu.
2. Tap **Point of Interest**.
3. Tap **POI in city**.
4. Type the name of the town where you want to go. Select the town when it is shown in the list.
5. Tap **Parking garage**.
6. Select a parking garage. The distance listed next to each POI is the distance from the city center.

The route to the POI is then calculated by your TomTom GO.



EN

Hands-Free Calling



Tips

- Make sure that you switch on Bluetooth on your phone.
- Make sure that your phone is set to "discoverable" or "visible to all".
- You may have to enter the password '0000' on your phone in order to connect to your TomTom GO.
- Make your TomTom GO a trusted device on your phone. Otherwise you will have to enter '0000' every time.

See your phone's user guide for information about Bluetooth settings.

If you have a cell phone with Bluetooth® you can use your TomTom GO to make phone calls and send and receive messages while you are driving.

Note: not all phones are supported. For more information, visit www.tomtom.com/phones

Connecting to Your Phone

First you must establish a connection between your cell phone and your TomTom GO. You only have to do this once. Your TomTom GO remembers your phone.

Tap **cell phone** in the **Main Menu**, then follow the instructions on the screen.

Setting up TomTom PLUS

After you have established a connection with your phone, you can set up a connection for TomTom PLUS services.

For information about TomTom PLUS, see **TomTom PLUS** on page 23.

Hands-Free Calling

Making a Call

Once you have established a connection with your phone, you can start making calls.

1. Tap **Cell phone** in the Main Menu.
2. Tap **Call**.

Note: Make sure that your phone is currently selected. The current phone is shown at the bottom of the screen.

3. Tap **Number** to enter a number to call.

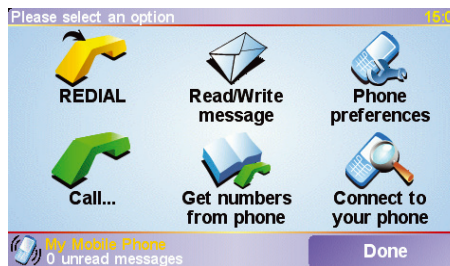
Receiving a Call

If someone calls you while you are driving, accept or reject the call by tapping the screen.

Auto-Answer

You can tell your TomTom GO to answer every call automatically after a certain time. Tap **Phone preferences** in the mobile phone menu, then tap **Auto-answer preferences**.

Select when your TomTom GO will automatically answer your calls.



Sharing your TomTom GO

You can establish connections with up to 5 mobile phones. To add more phones, do the following

1. Tap **Cell phone** in the Main Menu.
2. Tap **Connect to your phone**.
3. Tap **Find other phone...** and follow the instructions on the screen.

To switch between phones, tap **Connect to your phone** and then select your phone from the list.

EN

Music and Photos



- **Playlist** - tap this button to select a playlist.

Note: You can create playlists in a third-party application such as iTunes, Musicmatch, or Winamp.

- **Song** - tap this button to select from all the songs on your GO.
- **Artist** - tap this button to select a song by a particular singer or group.
- **Genre** - tap this button to select a particular type of music.
- **Album** - tap this button to select from a list of all the albums on your GO.
- **Audiobooks** - tap this button to select an Audiobook.

Important

- Playing music and looking at photos stored on your GO is only supported on the GO 910.
- Only select music and photos when you are stopped. It is dangerous to do this while you are driving.

Your GO 910 can play mp3 files and Audible® Audiobooks and can display bmp and jpg images.

Putting Music and Photos on Your GO

Transfer music files and photos to your TomTom GO from your computer using TomTom HOME.

For information about using TomTom HOME, see **Using TomTom HOME** on page 24.

Playing Music and Audiobooks

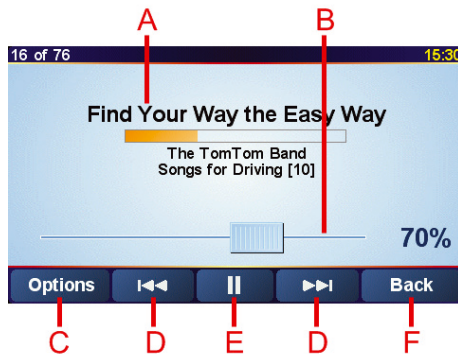
1. Tap **Music and photos** in the Main Menu.
2. Tap **TomTom Jukebox** to start the Jukebox.

Music and Photos

Now Playing

As soon as you choose a song or Audiobook, your TomTom GO starts playing that song, followed by the rest of the songs on the list.

- Ⓐ Information about the song.
- Ⓑ Volume - change the volume by moving the slider.
- Ⓒ The **Options** button. You can, for example, choose to repeat a song and shuffle the songs.
- Ⓓ Go to the previous or next song.
- Ⓔ Play or Pause the selected song.
- Ⓕ The **Back** button. Tap this button to go back to the TomTom Jukebox. The music will continue to play. Tap the button **Playing...** in the Jukebox to stop the music.

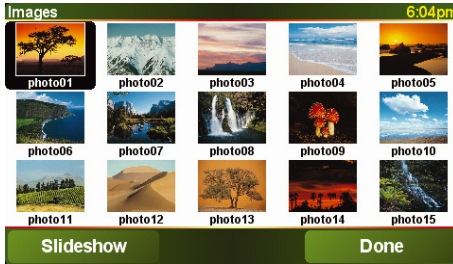


When you listen to Audiobooks, you will see buttons for going to the next and previous chapter. When you stop listening to an Audiobook, your GO remembers where you stopped.

To find out more about Audiobooks, go to the shop area in TomTom HOME.

EN

Music and Photos



Looking at Photos

1. Tap **Music and photos** in the Main Menu.
2. Tap **Photo gallery**.

The Photo gallery starts, showing small versions (thumbnails) of all the photos on your GO.

Tap the arrows to move up and down the page of thumbnails.

Tap **Slideshow** to start a slideshow.

Tap the thumbnail of a photo to view a large version of that photo.

- (A) Buttons to zoom in and zoom out on the photo.
- (B) Buttons to move to the next and the previous photo.
- (C) Tap **Slideshow** to start a slideshow.
- (D) Tap **Delete** to delete a photo.



Docking your TomTom GO

Windshield Dock

Use the windshield dock to position your TomTom GO in your car. The installation poster shows how to attach the dock to your windshield.

Tips

- Make sure your windshield is clean and dry before trying to attach the dock.
- Place the dock so it does not block your view of the road.
- Attach the dock to an area of the windshield where the glass is flat, not curved.

Using the Remote Control

The remote control is included with the GO 910 and can be bought as an accessory for the GO 710/510. There are 5 sets of buttons on the remote control:

- Volume up and down
- OK button - to open the Main Menu or press a button on the screen.
- Arrow buttons - to move around the screen.
- Left and right buttons - to press **Done** or **Cancel** when they are displayed.
- Keyboard button - to open the keyboard.

Home Dock

With the home dock you can charge your TomTom GO when it is not in the car and also connect your GO to your computer. Connect the home dock to the home charger and your computer as shown below.



Place your TomTom GO in the home dock in the same way as you place it in the windshield dock.

When connected to your computer, you can use TomTom HOME with your GO. For information about TomTom HOME, see **Using TomTom HOME** on page 24.