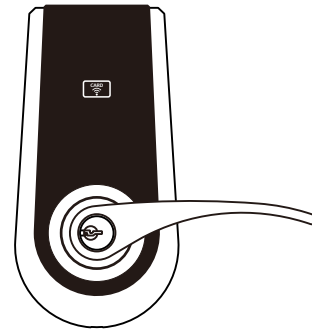


Notice : The changes or modifications not expressly approved by the party responsible for compliance could void the user's authority to operate the equipment.

IMPORTANT NOTE : To comply with the FCC RF exposure compliance requirements, no change to the antenna or the device is permitted.

Any change to the antenna or the device could result in the device exceeding the RF exposure requirements and void user's authority to operate the device.

This device complies with Part 15 of the FCC Rules. Operation is subject to the following two conditions :
(1) this device may not cause harmful interference, and
(2) this device must accept any interference received, including interference that may cause undesired operation.



ELECTRONIC KEYPAD LOCK INSTRUCTION MANUAL FOR PROXIMITY CARD

SETUP

1. Register the card

- 1-1 All cards have been registered in the factory.
- 1-2 The master password must be entered for the registration.
The cards may be registered individually or consecutively with a maximum of 6 cards.

2. Void designated card

- 2-1 The master password is required to void the card.
Voided cards may be reused again after registration.
- 2-2 The cards may be voided individually or consecutively.

3. Void all cards at the same time

- 3-1 The master password is required to void the cards.
- 3-2 All cards may be voided at the same time. The voided cards may be reuse again after registration.

REGISTRATION

1. Registering the cards

Enter PC → [Left Arrow] → 13 → [Left Arrow] → 1
→ [Left Arrow]

Instruction : After the setup is complete, place the card close to the sensor (when it beeps once, the registration is complete). The number "1" above represents the order of the card. If the card to be registered is the third card, enter the number "3", and so on. A maximum of 6 cards can be registered. They can be registered individually or consecutively.

2. Voiding designated cards

Enter PC → [Left Arrow] → 14 → [Left Arrow] → 1
→ [Left Arrow]

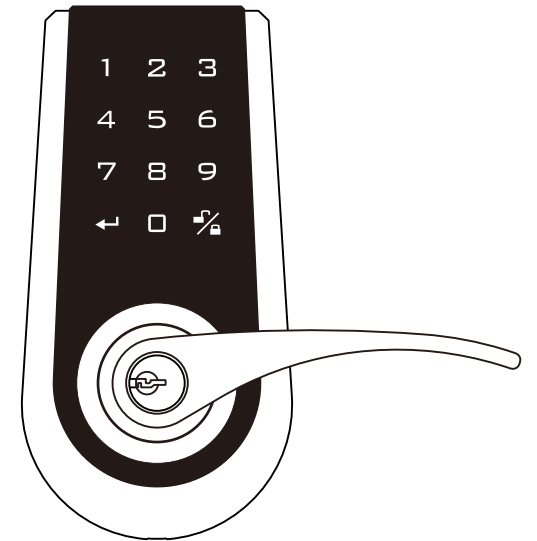
Instruction : The number "1" above represents the order of the card. To void the cards, please enter the order of the card. For example, if the third card is to be voided, enter "3", and so on. The cards may be voided individually or consecutively.

3. Voiding all cards at the same time

Enter PC → [Left Arrow] → 15 → [Left Arrow]

Instruction : When it beeps twice, all cards have been voided.

ELECTRONIC KEYPAD LOCK



USER MANUAL



Attention : Please do not use the "electronic" screwdriver for installation.

Limited Warranty Statements

1. Warranty

The manufacturer warrants the Product to be free from defects in material and workmanship for a period of 12 months from the original date of purchase. If you discover a defect in the Product covered by this warranty, we will repair or replace the item at our option using new or refurbished components.

2. Exclusions

This warranty covers defects in manufacturing discovered while using the Products as recommended by The manufacturer rather than occurred by the act of God, and damages caused by misuse, abuse, and unauthorized modification.

3. Limited of Liability

The manufacturer will not be held liable for incidental or consequential losses or damages to any act of God.

4. Reminder

Service requirement shall subject to the presentation of this warranty card and defective parts to the manufacturer. The warranty card will not be reissued if lost.

Product : DIGITAL TOUCHPAD LEVER LOCK

Purchase Date :

This device complies with Part 15 of the FCC Rules. Operation is subject to the following two conditions :
 (1) this device may not cause harmful interference, and
 (2) this device must accept any interference received, including interference that may cause undesired operation.

TEMPLATE

Fit here on door edge

51 45 40 35
 2" 1-3/4" 1-9/16" 1-3/8"

Mark Ø1" (25.4mm) hole at center of door edge.

FOR 2-3/4" (70mm) BACKSET
 FOR 2-3/8" (60mm) BACKSET

Ø2-1/8" (54mm)



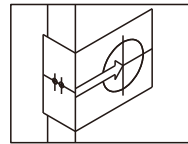
Table of Contents

■ Installation Instructions	P.1
• Replace the old lock with the new one	P.1
• Install the new lock on the new door	P.1
• Identifying the door handing	P.2
■ Starting the installation	P.4
■ Operation Interface	P.7
■ Specifications and Functions	P.8
• Power supply	P.8
• Low battery indication	P.8
• Keypad light indication	P.8
• Audio indication	P.8
• Programming Code (PC)	P.8
• User Code (UC)	P.9
• Delete individual user code	P.9
• Delete all user codes at once	P.9
• Invalidate user codes temporarily	P.9
• Create the one-time user code	P.9
• Restore default PC & UC	P.9
• Unlock	P.10
• Lock	P.10
• Automatic lock	P.10
• Password protection function	P.10
• Backlit function	P.10
■ Code Setup	P.11
■ Notifications	P.11
■ Function Setup	P.12
■ Troubleshooting	P.14

■ Installation Instructions

Replace the old lock with the new one

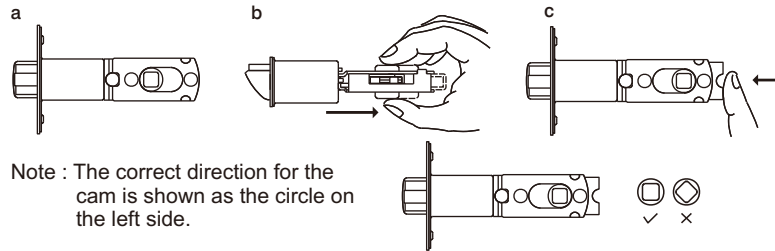
To replace the old lock with this product on the same door, please confirm the backset for the latch and the specifications for the face plate match. Please also refer to the following instructions to adjust the backset and face plate to match the existing door's specifications.



The distance between the edge of the door to the center of the hole is the latch backset. The adjustable latch provides two choices of backsets 2-3/8" (60mm) and 2-3/4" (70mm). Change the backset for the latch according to the illustration.

For adjustments please refer to the following illustrations.

- The illustration shows a backset of 2-3/8" (60mm).
- Pull the cam all the way to the right, to adjust backset to 2-3/4" (70mm).
- To restore back to 2-3/8" (60mm), push the adjustable sleeve all the way to the left.



Latch face plate

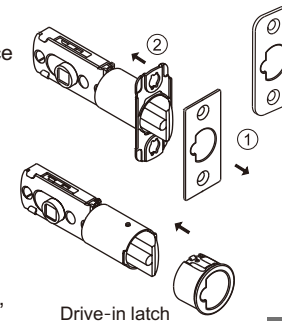
Prior to installation, please make sure that the face plate is appropriate for the latch.

Replace the face plate

- Use the slotted screwdriver to pry open the face plate and the lock body.
- Install the appropriate face plate onto the latch body.

Installation of the round face plate

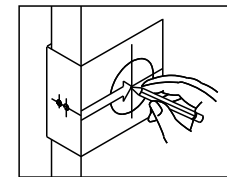
Align the round face plate to the head of the latch, and lock it into position.



1

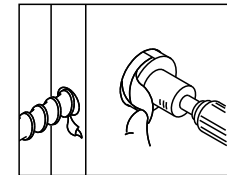
Install new lock on the new door

To install this product on a new door, please go through the following steps to drill the hole.



Mark The Door With Template

Select the height and backset as desired on the door face ; use the TEMPLATE as an indication to mark the center of the circle on the door face and the center of the door edge.



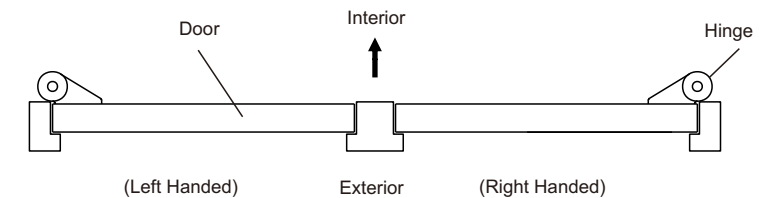
Drill Holes

Using the marks as a guide to drill a hole Ø2-1/8" (54mm) through the door face for the lockset, then a hole of Ø1" (25.4mm) for latch.

Identify Door Handing

Before installing this product, please confirm the door opening direction to make sure that the lever is installed in the correct direction.

Face the door from outside, the door is left handed if the hinge is on the left-hand side of the door, whereas the door is right handed if the hinge is on the right-hand side of the door.

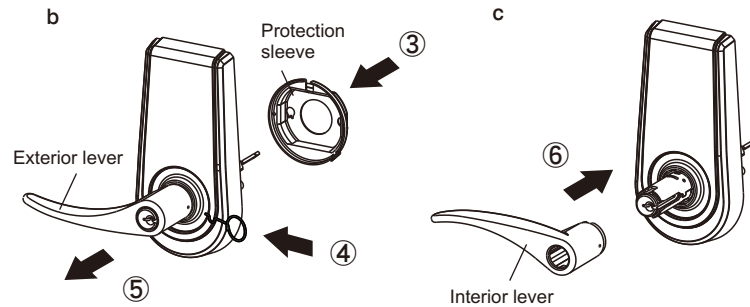
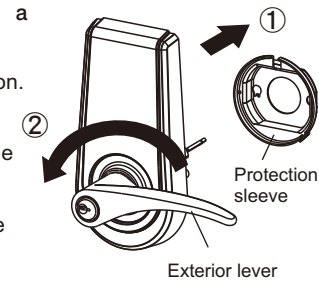


Check that the lever direction meets the door handing. If not, please switch the levers by following steps.

2

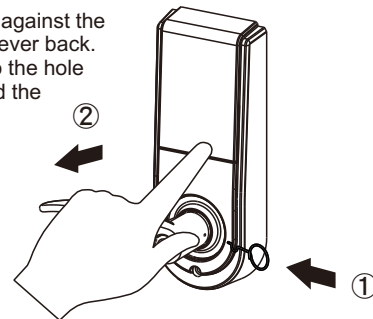
Change Lever Handing

- Make sure that the lock is unlocked. (The spindle is perpendicular.) Remove the protection sleeve of the exterior lock unit. Rotate the exterior lever by 180 degrees and return the protection sleeve to its original position.
- Insert the dismantle tool into the hole on the neck of the exterior lever and press down, and pull the lever out at the same time. From the interior, just remove the lever and switch the interior and exterior levers.
- Push in and fasten the lever. Make sure that the lever is correctly in place, and test the lock by turning it to make sure it's functioning properly.



Remove the interior lever

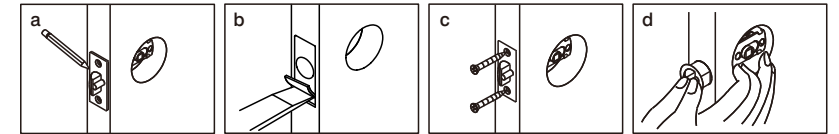
Use the thumb and index finger to push against the lock body while holding and pulling the lever back. Meanwhile, insert the dismantle tool into the hole on the side of the lever, press down, and the lever can be pulled out.



3

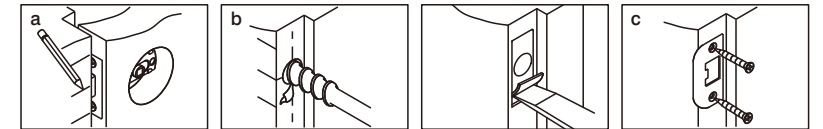
Start the installation

1. Install latch



- Insert the latch and lay the faceplate against the door edge. Use a pencil to mark its perimeter, then take out the latch.
- Chisel out the portion you've marked with pencil for about 5/32" (4mm) deep. Score the area within the borders as clearly and precisely as possible. Ensure the plate can fit flush with the door edge surface.
- Insert the latch and tighten it with screws. Be sure the holes for through-bolts (next to the adjustable cam) are horizontally aligned.
- It is not necessary to chisel the door edge for the faceplate installation if you use the drive-in latch. You may install it into the edge bore directly, but be sure the bevel should face the outside assembly.

2. Install strike

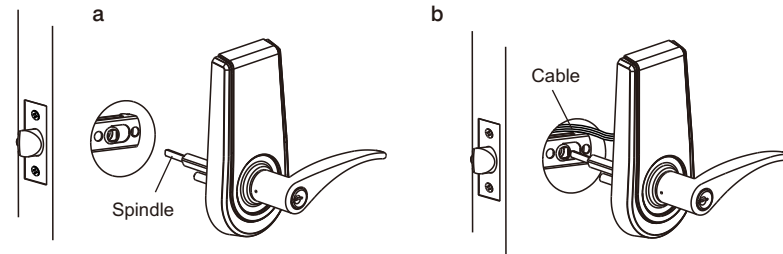


- Half-close the door to lay the latchbolt against the door frame. Mark the position of faceplate as an indication. Place the strike against the door frame and mark its perimeter. Make sure the center of strike is perfectly aligned with the center of faceplate.
- Drill a $\varnothing 1"$ (25.4mm) hole with 1/2" (13mm) depth on the center of strike outline. Then use the chisel to scrape out the door frame for 1/16" (1.6mm) deep within the traced outline. Make sure to chisel deep enough to allow the strike to lay flush with the frame surface.
- Insert the strike and tighten it with screws.
Note : please use "tapping screws" for a metal door.

4

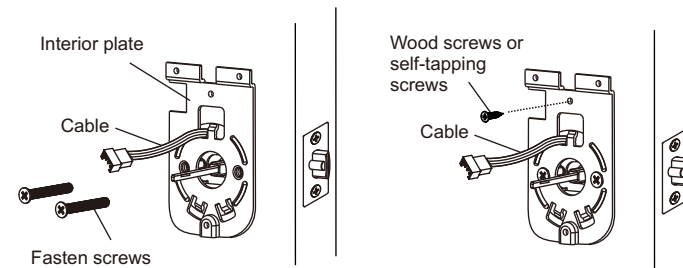
3. Install the exterior lock body

- Fit the spindle vertically through the square cam of the latch.
- Fit the cable through the cross bore above the latch.



4. Install the interior mounting plate

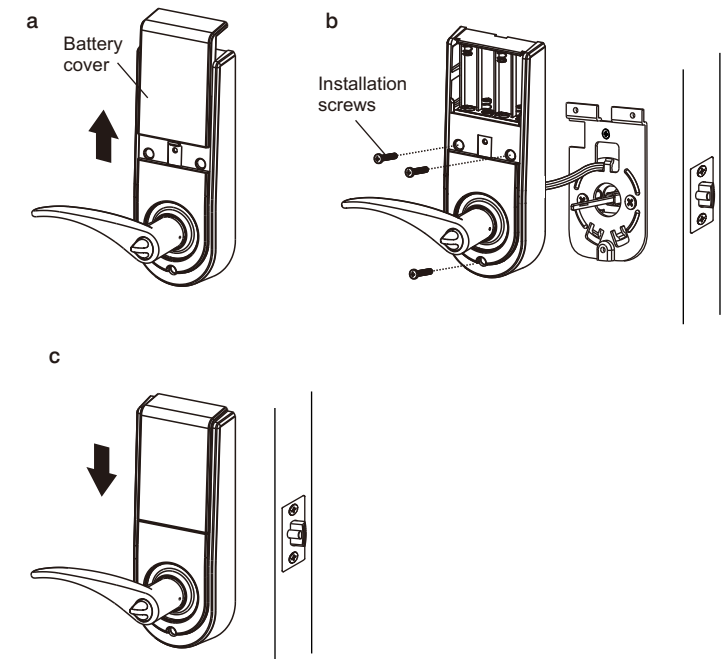
- Pass the cable through the cable hole on top of the interior plate. Then fasten the interior plate with screws.
- Examine whether the exterior lock unit and the interior plate are tilted. If so, please loosen the screws for adjustment, and re-fasten the screws.
- Wood screws or self-tapping screws may be used if needed.
(Wood screws are used for wooden doors, and self-tapping screws are used for metal doors to increase bonding.)



5

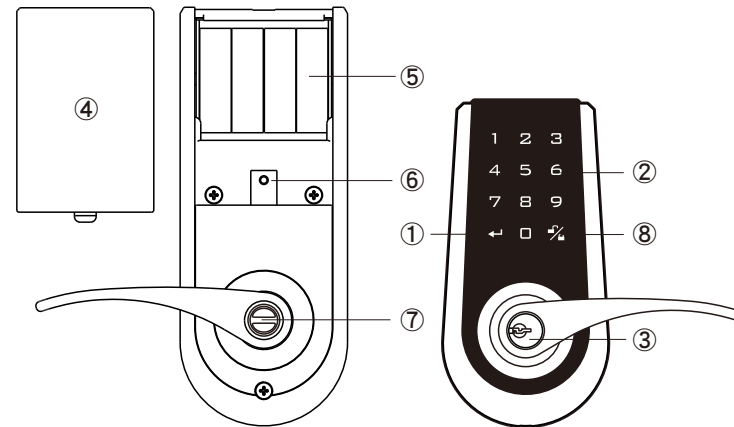
5. Install the interior lock body

- Push the battery cover upward.
- Connect the interior and exterior cables. Align the interior lock unit to the spindle and push it in (the turn-piece is horizontal). When the interior lock unit is flush with the door, fasten with screws.
If the interior lock body cannot be flush with the door, please push the cable into the cross bore.
- Install 4 AA Alkaline batteries and close the battery cover. Installation is complete.



6

■ Operational interface



① Confirm button
For function setup.

② Number buttons
To enter user codes. Each code must be 4-10 digits long.

③ Cylinder
To be locked and unlocked with the key.

④ Battery cover
Push it upward and outward to replace the batteries.

⑤ Battery holder
Uses 4 AA Alkaline batteries.

⑥ Indication light
When the light is lit continuously, it means the unit is in operation. When it's blinking, it means low battery and the batteries need to be replaced.

⑦ Turn-piece
Lock and unlock from the interior.

⑧ Lock/unlock button
Lock and unlock from the exterior.

■ Specifications and Functions

1. Power supply

DC6V, 4 AA, 1.5V Alkaline batteries. (not included)

2. Low battery indication

2-1 During operation, if the red light on the battery cover blinks and 10 short beeps are heard, it means that the battery is low. The batteries need to be replaced immediately.

2-2 All settings will remain active and won't change or disappear even if the battery is down.

2-3 When the batteries are fully drained, the system can still be locked or unlocked manually with the key.

3. Keypad light indication

If the password is entered incorrectly more than 5 times, the system will initiate its protective mode and stop functioning.

4. Audio indication

4-1 1 short beep means the operation is normal.

4-2 2 long beeps mean the setting is correct.

4-3 3 short beeps mean operational error.

4-4 3 long beeps mean the default password has been restored.

4-5 5 short beeps mean password operational error. The system will initiate the protective mode and stop functioning.

4-6 10 short beeps mean the battery is low.

5. Programming Code (PC)

5-1 The default programming code is "0000". It is recommended that the user change the programming code during initial installation.

5-2 There is only one programming code and is used to set all functions.

5-3 The programming code cannot be used to unlock the door.

5-4 The programming code must be 4-10 digits in length.

5-5 The programming code can be changed anytime as needed.

6. User Code (UC)

- 6-1 The default user code is "1234". During initial installation, delete the default user code, and then set the new user code.
- 6-2 A total of 6 user codes can be saved.
- 6-3 The user code can only be used to unlock the door and to set other functions.
- 6-4 The user code must be 4-10 digits in length.
- 6-5 The user code can be deleted or added at anytime as needed.

7. Delete individual user code

- 7-1 User codes can be deleted individually. The same user code can be reset after being deleted.
- 7-2 The programming code is needed to delete individual codes.

8. Delete all user codes

- 8-1 All user codes can be deleted at once. The original user codes can be reset again.
- 8-2 After deleting all user codes, the automatic lock and the % button lockup functions set previously will automatically be disabled. The door can only be locked or unlocked with a key. The original functions will be restored once the user code is set.
- 8-3 The programming code is required to delete all user codes.

9. Temporarily disable user code

- 9-1 This will temporarily disable all user codes. The automatic lockup and keypad lockup functions that were set previously will automatically be disabled. A key must be used to lock and unlock the door.
- 9-2 To restore the code function and other electronic functions, repeat the steps for "Temporarily disable user code".

10. Create one-time user code

- 10-1 After the one-time user code is entered and used, it is disabled and won't be able to open the door again.
- 10-2 The same one-time user code can be set repeatedly.
- 10-3 The programming code is needed for setup.

11. Restore the default PC & UC

Use this function when forgetting the programming code or to delete all settings.

12. Unlock

- 12-1 The door can be unlocked by entering a registered user code or the key from outside, or pressing the lever down / turning the knob from inside.
- 12-2 To unlock with the keypad
 - 1. Place the hand within 2 cm of the keypad or press any key once to light up the keypad.
 - 2. 4 numbers will appear on the keypad. Press them in any order.
 - 3. Enter the user code.
 - 4. Press the % button.
When the light for the key goes out, the system is unlocked.

13. Lock

When the keypad lights up, the user may press the keypad, press % button or use the key and automatic lockup function to lock the door. The door can be locked from the inside by turning the interior turn-piece.

14. Automatic lockup

- 14-1 The timer (10-99 seconds) of automatic lockup can be set up by the user as needed. (The default timer is 30 seconds after the system is unlocked.)
- 14-2 To disable the automatic lockup, please repeat the steps for "Automatic lockup".

15. Code protection

If the user code is entered incorrectly over 5 times, the system will initiate the protective function and disable the keypad for 45 seconds.

16. Backlight

When the hand is within 2 cm of the keypad, the backlight will light up for about 5 seconds, making it easy to operate lockset in the dark.

■ Code setup

1. During initial installation, it is recommended to change the default programming code (0000), delete the default user code (1234), and add the new personal user code prior to setting up other functions.
2. Two long beeps indicate that the input is correct. When the keypad blinks three times with three short beeps, the input is incorrect.
3. During the function setup, if it takes longer than 6 seconds to finish any step, the system will automatically leave the program.
4. This product can be operated with the keypad or key.
5. Please refer to the instructions for function setup.

■ Notification

1. Alkaline batteries are recommended to maintain stable and prolonged power.
2. Do not mix the alkaline batteries with regular zinc-carbon batteries and avoid mixing batteries of different brands.
3. Do not use any chemicals or add any lubricants when cleaning the lock, to avoid damaging the panel and coating.

■ Function setup

- PC (Programming code)
- UC (User code)
- ↵ Confirm button

All setup should be done when the system is unlocked. Turn keypad backlight on by approaching your hand or pressing a button, then proceed with setup.

Add new user code



Instruction : A total of 6 user codes with a combination of 4 to 10 digits can be set up.

Delete individual user code



Delete all user codes



Instruction : When all user codes are deleted and no new user code is set up, all electronic lockup functions will be disabled. (The electronic functions will be restored when a new user code is set.) During this time, the door must be locked or unlocked manually with a key.

Change programming code



Automatic lockup



Instruction : The default setup for the automatic lockup timer is 30 seconds. To modify the timer for the automatic lockup, please refer to the instructions for "Automatic lockup timer". To cancel the automatic lockup, please repeat the setup procedure for "Automatic lockup".

- PC (Programming code)
- UC (User code)
- ↵ Confirm button

Automatic lockup timer



Instruction : the timer can be set from 10 to 99 seconds.

Temporarily disable user codes



Instruction : When all user codes are temporarily disabled, all electronic functions will be temporarily disabled as well. The door must be locked or unlocked manually with the key. To restore user code functions, please repeat the setup process for "Temporarily disable user code".

Use one-time user code



Instruction : Once this user code is entered and used, it is disabled and unable to open the door again. However, the same one-time user code can be set again.

Restore factory default

Instruction : After removing the batteries, touch the keypads for three seconds and re-install the batteries.
When the numbers 2, 5, 8, 0 are displayed on the keypad, press the four numbers in any order until all numbers disappear.

■ Troubleshooting

Scenario 1

After the installation is complete and the batteries are in place, none of the buttons are responsive. (No sound, and no backlight)

Cause : Issues with batteries or the wiring.

Solution : Replace the batteries or make sure the batteries are installed correctly. Please check whether the cable from the interior lock unit is connected correctly.

Scenario 2

When entering the programming code while setup of other functions, the error message appears after pressing the confirm button.

(The light blinks three times with three short beeps.)

Cause : Function setup with the door locked.

Solution : Unlock the door by turning the turn-piece from the interior lock unit or with a key from the exterior.

Scenario 3

The door will not lock after pressing the $\frac{1}{4}$ button because the lever was turned before the motor had finished operating.

Cause : The lever or the knob is turned too early while the motor is not yet operating.

Solution : Wait for the end of the motor operating sound (the keypad light is off), and then press the $\frac{1}{4}$ button again to execute the lockup function.