

PHILIPS

Smart Display

TAW8805



www.philips.com/welcome

PHILIPS

Table of Contents

- 1. Important 1
 - 1.1 Safety precautions and maintenance 1
 - 1.2 Notational Descriptions 3
 - 1.3 Disposal of product and packing material 3
- 2. Setting up the Philips Smart Display 5
 - 2.1 Installation 5
 - 2.2 Operating the Philips Smart display 5
- 3. On-screen menu 6
 - 3.1 Network 6
 - 3.2 Home screen 6
 - 3.3 Bluetooth 6
 - 3.4 Device options 7
 - 3.5 Sound 7
 - 3.6 Login Alexa and Google account 7
 - 3.7 Ambiglow setting 7
 - 3.8 Display setting 8
 - 3.9 Help and support 8
- 4. Technical Specifications 9

1. Important

This electronic user's guide is intended for anyone who uses the Philips Smart display. Take time to read this user manual before you use the Philips Smart display. It contains important information and notes regarding operating the Philips Smart display.

The Philips guarantee applies provided the product is handled properly for its intended use, in accordance with its operating instructions and upon presentation of the original invoice or cash receipt, indicating the date of purchase, dealer's name and model and production number of the product.

Before operating the Philips Smart display, please read this manual thoroughly. This manual should be retained for future reference.

1.1 Safety precautions and maintenance

Warnings

Use of controls, adjustments or procedures other than those specified in this documentation may result in exposure to shock, electrical hazards and/or mechanical hazards.

Operation

- Please keep the Philips Smart display out of direct sunlight, very strong bright lights and away from any other heat source. Lengthy exposure to this type of environment may result in discoloration and damage to the monitor.
- When positioning the Philips Smart display, make sure the power plug and outlet are easily accessible.
- If turning off the Philips Smart display by detaching the power cable or DC power cord, wait for 6 seconds before attaching the power cable or DC power cord for normal operation.
- Please use approved power cord provided by Philips all the time. If your power cord is missing, please contact with your local service center.
- Operate under the specified power supply. Be sure to operate the monitor only with the specified power supply. Use of an incorrect voltage will cause malfunction and may cause fire or electric shock.
- Protect the cable. Do not pull or bend the power cable and signal cable. Do not place the monitor or any other heavy objects on the cables, if damaged, the cables may cause fire or electric shock.
- Do not subject the Philips Smart display to severe vibration or high impact conditions during operation.
- Do not knock or drop the Philips Smart display during operation or transportation.

Maintenance

- To protect the Philips Smart display from possible damage, do not put excessive pressure on the LCD panel. When moving the Philips Smart display, grasp the frame to lift; do not lift the monitor by placing your hand or fingers on the LCD panel.
- Unplug the Philips Smart display if you are not going to use it for an extensive period of time.
- Unplug the Philips Smart display if you need to clean it with a slightly damp cloth. The screen may be wiped with a dry cloth when the power is off. However, never use organic solvent, such as, alcohol, or ammonia-based liquids to clean your monitor.
- To avoid the risk of shock or permanent damage to the set, do not expose the Philips Smart display to dust, rain, water, or excessive moisture environment.
- If the Philips Smart display gets wet, wipe it with dry cloth as soon as possible.
- If foreign substance or water gets in the Philips Smart display, please turn the power off immediately and disconnect the power cord. Then, remove the foreign substance or water, and send it to the maintenance center.
- In order to maintain the best performance of your monitor and use it for a longer lifetime, please use the monitor in a location that falls within the following temperature and humidity ranges.
 - Temperature: 0–40°C 32–104°F
 - Humidity: 20–80% RH

Service

- The casing cover should be opened only by qualified service personnel.
- If there is any need for any document for repair or integration, please contact with your local service center.



Note

Consult a service technician if the monitor does not operate normally, or you are not sure what procedure to take when the operating instructions given in this manual have been followed.

This device complies with Part 15 of the FCC Rules. Operation is subject to the following two conditions: (1) this device may not cause harmful interference, and (2) this device must accept any interference received, including interference that may cause undesired operation.



Caution

The user is cautioned that changes or modifications not expressly approved by the party responsible for compliance could void the user's authority to operate the equipment.



Note

This equipment has been tested and found to comply with the limits for a Class B digital device, pursuant to part 15 of the FCC Rules. These limits are designed to provide reasonable protection against harmful interference in a residential installation. This equipment generates uses and can radiate radio frequency energy and, if not installed and used in accordance with the instructions, may cause harmful interference to radio communications.

1. Important

However, there is no guarantee that interference will not occur in a particular installation. If this equipment does cause harmful interference to radio or television reception, which can be determined by turning the equipment off and on, the user is encouraged to try to correct the interference by one or more of the following measures:

- Reorient or relocate the receiving antenna.
- Increase the separation between the equipment and receiver.
- Connect the equipment into an outlet on a circuit different from that to which the receiver is connected.
- Consult the dealer or an experienced technician for help.

If power exceeds the limit and the distance (Over 20cm distance in actual use between the device and user) is compliant with the requirement

FCC RF Radiation Exposure Statement:

This equipment complies with FCC radiation exposure limits set forth for an uncontrolled environment. This equipment should be installed and operated with a minimum distance of 20cm between the radiator and any part of your body.

1.2 Notational Descriptions

The following subsections describe notational conventions used in this document.

Notes, Cautions and Warnings

Throughout this guide, blocks of text may be accompanied by an icon and printed in bold or italic type. These blocks contain notes, cautions or warnings. They are used as follows:



Note

This icon indicates important information and tips that help you make better use of your computer system.



Caution

This icon indicates information that tells you how to avoid either potential damage to hardware or loss of data.



Warning

This icon indicates the potential for bodily harm and tells you how to avoid the problem.

Some warnings may appear in alternate formats and may not be accompanied by an icon. In such cases, the specific presentation of the warning is mandated by the relevant regulatory authority.

1.3 Disposal of product and packing material

Waste Electrical and Electronic Equipment-WEEE



This marking on the product or on its packaging illustrates that, under European Directive 2012/19/EU governing used electrical and electronic appliances, this product may not be disposed of with normal household waste. You are responsible for disposal of this equipment through a designated waste electrical and electronic equipment collection. To determine the locations for dropping off such waste electrical and electronic, contact your local government office, the waste disposal organization that serves your household or the store at which you purchased the product.

Your new display contains materials that can be recycled and reused. Specialized companies can recycle your product to increase the amount of reusable materials and to minimize the amount to be disposed of.

All redundant packing material has been omitted. We have done our utmost to make the packaging easily separable into mono materials.

Please find out about the local regulations on how to dispose of your old display and packing from your sales representative.

Taking back/Recycling Information for Customers

Philips establishes technically and economically viable objectives to optimize the environmental performance of the organization's product, service and activities.

From the planning, design and production stages, Philips emphasizes the importance of making products that can easily be recycled. At Philips, end-of-life management primarily entails participation in national take-back initiatives and recycling programs whenever possible, preferably in cooperation with competitors, which recycle all materials (products and related packaging material) in accordance with all Environmental Laws and taking back program with the contractor company.

Your display is manufactured with high quality materials and components which can be recycled and reused.

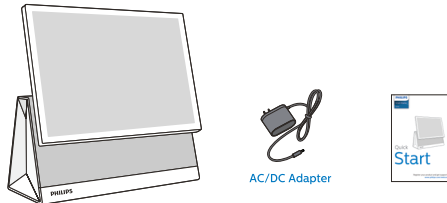
To learn more about our recycling program please visit :

<http://www.philips.com/a-w/about/sustainability.html>

2. Setting up the Philips Smart Display

2.1 Installation

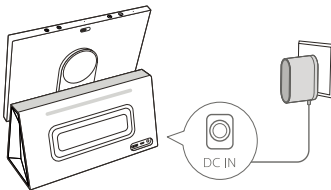
1 Package contents



Note

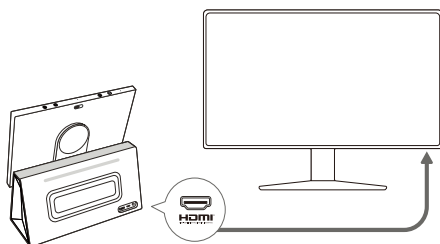
Use only the AC/DC adapter provided by Philips.

2 Plug in the Philips Smart display



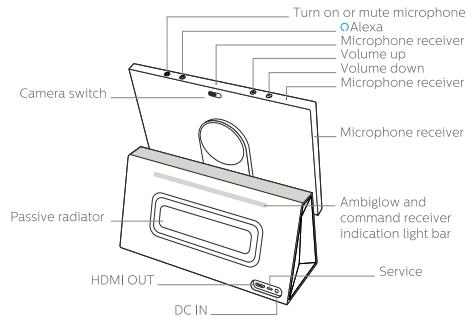
3 Connect to HDMI for an external display

Connect with other devices with quick and easy HDMI-out connection. The Philips Smart Display is suitable for most of your home environments, you can connect with a TV in the living for optimal video viewing, and connect with a monitor in a study room for multiple uses.

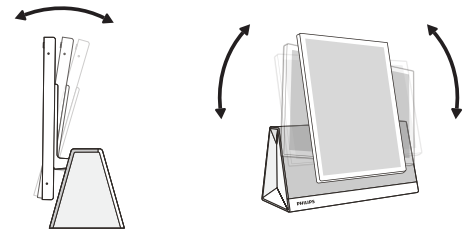


2.2 Operating the Philips Smart display

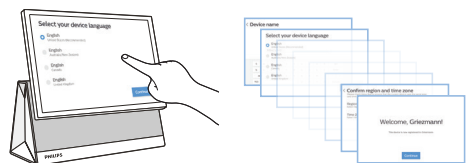
1 Description of the control buttons



2 Physical Function

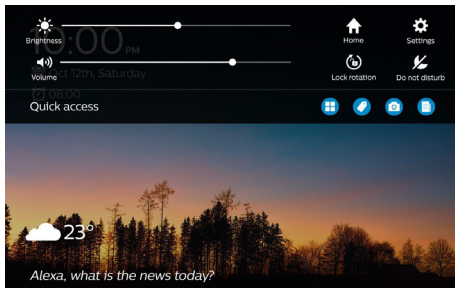
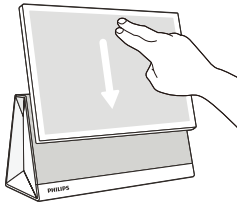


3 Follow the on-screen initializing setting

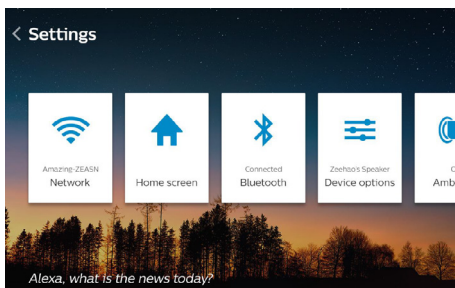


3. On-screen menu

To access the settings, swipe down from the top of the screen.




Select [Settings], you can enter the on-screen setting menu.



3.1 Network

To connect the Philips Smart display to the Internet wirelessly, you need a Wi-Fi router with a connection to the Internet.

1 Make the connection

1. In the list of found networks, select on your wireless network. If your network is not in the list, select  (refresh icon) on the top-right of the screen to re-detect your wireless network.
2. You can check Wi-Fi signal strength, link speed, frequency, security type, and IP address.

3.2 Home screen

To set what you want to show on the home screen of the Philips Smart display.

Note

To get the better synchronized content, we recommend that you check the Alexa app on your smartphone to ensure that the Philips Smart display uses the same area and time zone settings.

3.3 Bluetooth

Position the bluetooth device within a distance of 5 meters from the Philips Smart display. Read the user manual of the device for specific information on pairing and on wireless range. Make sure the Bluetooth setting on the Philips Smart display is switched on.

3.4 Device options

To set the device name, language, area, time zone, the display way on time and temperature. Or you can reset the Philips Smart display to the factory default settings.

Note

To get the better synchronized content, we recommend that you check the [Alexa app on your smartphone to ensure that the Philips Smart display uses the same area and time zone settings.](#)

3.5 Sound

You can set the audio source from the connected HDMI device or from the Philips Smart display.

3.6 Login Alexa and Google account

1 About Alexa built-in

This Philips Smart Display with Alexa built-in.

Amazon Alexa lives in the cloud and is always getting smarter. Ask Alexa to play music, hear the news, check weather, and more. You can also control your smart home with Alexa, for example by saying "Alexa, turn down my Hue lights".

2 About Alexa Skill

Alexa uses the Alexa Skills to extend the voice control operations. Skills add new capabilities that create a more personalized experience with the Philips Smart display. On Alexa Skills store, it offers various voice control commands to work with the Philips Smart display.

* Alexa is not available in all languages and countries.

* Amazon, Alexa and all related logos are trademarks of Amazon.com, Inc. or its affiliates.

3 Using Alexa

To use Alexa, you need to first log in the Alexa client service on the Philips Smart display. Follow the on-screen instructions to complete the login.

4 Using Google Photo

You can store photos from the camera of the Philips Smart display or show your google photo on the home screen. Follow the on-screen instructions to complete the login.

3.7 Ambiglow setting

Ambiglow adds a new dimension to your viewing experience. You can set Ambiglow to follow the screen content or the audio dynamics of the Philips Smart display. Alternatively, you can set Ambiglow to show a preset color style or you can switch Ambiglow off.

It is recommended that you dim the lighting conditions in your room for maximum effect. Ensure that Ambiglow is set to "on" mode. The Philips Smart Display will react with appropriate colors creating a halo effect, overall matching the image on the screen or audio dynamics.

3.8 Display setting

You can set the Philips Smart display to switch to Standby mode automatically after a preset time, and also set the screen content type while in Ambient mode.

3.9 Help and support

You can find Frequency Asked Questions or get Alexa tips on the Philips Smart display.

4. Technical Specifications

Picture/Display	
Display panel type	IPS / Touch screen
Backlight	LED
Panel size	10.1" (25.65 cm)
Surface treatment	Anti-glare
Viewing Angle	178° (H) / 178° (V) @ C/R > 10
Speaker and sound	
Speaker type	Active
Amplifier	Integrated
Internet streaming services	TuneIn, Amazon Music, Audible
Interface	Bluetooth, IEEE 802.11a/b/g/n/ac
Compatibility	Bluetooth bluez : 5.50
Speaker details	Speaker - stereo x 2 - active
Driver details	Speaker: 2 x full-range driver - 2" - neodymium Speaker: passive radiator
Connectivity	
Signal output	HDMI output (HDMI 1.4)
Service port	Yes
Convenience	
Tilt	-7 ~ +28 degress
Screen rotation	+ 90 degress
Built-in webcam	5.0 megapixel camera with 3 microphone array
Internet of Things (IoT)	
Internet of Things (IoT) compatible	Yes
Intelligent Assistant compatible	Alexa
Internet of Things (IoT) Hub	Integrated
Voice control	Direct, active button
Power	
On mode	15W
Standby mode	15W
Power source	AC/DC power adapter
Power supply	100-240VAC, 50-60Hz 12V 2A, DC
Dimension and weight	
Product dimension (WxDxH)	246 x 94 x 242 (mm)
Packaging dimension (WxDxH)	273 x 286 x 105 (mm)
Product weight	1.8 (kg)



2020 © TOP Victory Investment Ltd. All rights reserved.

This product has been manufactured by and is sold under the responsibility of Top Victory Investments Ltd., and Top Victory Investments Ltd. is the warrantor in relation to this product. Philips and the Philips Shield Emblem are registered trademarks of Koninklijke Philips N.V. and are used under license.

Specifications are subject to change without notice.