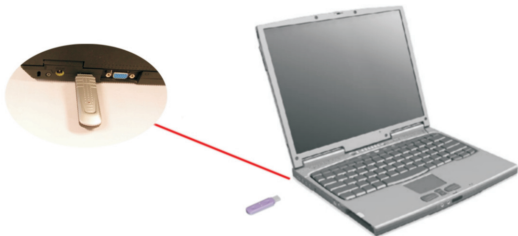

Presenter II - remote control with LaserPointer

Preparing for use

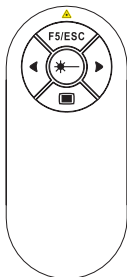
- ▶ Connect the receiver to one of the USB ports on the device.




Windows recognises the receiver by the Plug&Play function and initiates the driver installation.

- ▶ Follow the instructions on the screen.

Remote control...




...switching on

- ▶ Press and hold the key **F5/ESC**
- ▶ Then press the key .
- ▶ Hold both keys for approx. 4 seconds.

The remote control is now switched on. The green LED indicator lights.

...switching off

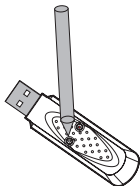
- ▶ Press and hold the key **F5/ESC**
- ▶ Then press the key .
- ▶ Hold both keys for approx. 4 seconds.


The remote control is now switched off. The green LED indicator goes out.

Establishing connection between remote control and receiver




When you replace the batteries of the remote control, you must carry out the following four steps again.



- ▶ Plug the receiver to USB port , the right side LED will blink.
- ▶ Press the left side button of receiver with a pointed object (as photo) then the left side button will blink red.
- ▶ Press **F5/ESC** +  and hold approx 4 seconds.
- ▶ ID setting is completed.





If the remote control does not function ...

... you may need to change the transmission frequency.

- ▶ Press and hold the key **F5/ESC**
- ▶ Then press the key  .
- ▶ Hold both keys for approx. 4 seconds.

The transmission frequency is now changed. LED is blinking green.

Description of symbols

Icon		Description
	Black	Changes the view between Black screen and the presentation.
	Next page	Shows the next page of a presentation or carries out the next action.
	Previous page	Shows the previous page or carries out the previous action.
F5/ESC	F5 / ESC	F5: switches over to the full-screen display ESC: ends the presentation
	Laser	Laser pointer

Warning:

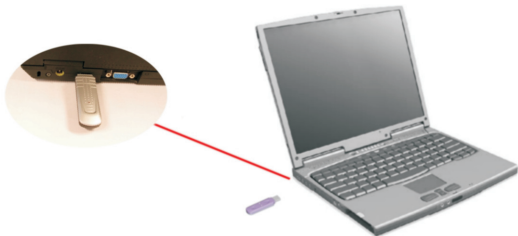


- ▶ This sign indicates laser emission areas, Laser can impair vision. So do not look into laser beam directly, or do not aim laser at people's or animals' eyes.
- ▶ For safety reasons, please keep the product out of reach of children.

Presenter 說明書

使用前

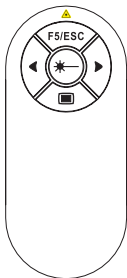
- ▶ 將USB接收插入電腦的USB插槽中。



接收器即插即用，不需安裝需動程式

- ▶ 跟隨電腦螢幕上的步驟

關於遙控器的使用方法...

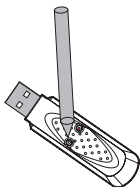


遙控器關/開：

- ▶ I. 當遙控器是關機的狀態下如何將它開啟：
同時按下 **F5/ESC** 與 **★** 鍵超過4秒以上
即可將遙控器開啟，此時按鍵下的綠燈
會亮。
- ▶ II. 當遙控器是開機的狀態下如何將它關掉：
同時按下 **F5/ESC** 與 **★** 鍵超過4秒以上
即可將遙控器關閉，此時按鍵下的綠燈
會熄滅。

建立遙控器及接受器的關聯性

☆ 如果你已經更換電池或是遙控器沒有動作或是受到其他產品的干擾，可以依下列方式更換頻率Frequency ID。








- ▶ 接收器插入後右邊LED會亮紅光
- ▶ 利用尖狀物按壓接收器左邊Button (如圖示)
- ▶ 同時按雷射光筆上的[F5/ESC] + [■] 鍵大約4秒
- ▶ 頻率Frequency Id設定完成

假如遙控器不會動，請試著換到另個頻率

- ▶ 按 [F5/ESC] 和 [■] 鍵超過4秒
- ▶ 頻率更換成功綠燈閃爍

按鍵說明

Icon		Description
	Black	按一下使螢幕變黑，再按一下即可回到投影片畫面。
	Next page	按一下進入下一張投影片。
	Previous page	按一下返回前一張投影片。
F5/ESC	F5 / ESC	F5按一下進入投影片模式，再按3秒鐘以上回到正常模式ESC:最後頁的投影片。
	Laser	按住此鍵開啟雷射光筆。

注意：

- ▶ 請注意雷射光源的危險性，不可直視激光光束，也不可將激光光束瞄準任何人或動物的眼睛，避免眼睛遭到傷害。
- ▶ 此雷射筆並非玩具，請勿讓兒童接觸或使用。

FCC Warning Statement

This device complies with Part 15 of the FCC Rules. Operation is subject to the following two conditions:

- (1) this device may not cause harmful interference, and
- (2) this device must accept any interference received, including interference that may cause undesired operation.

This equipment has been tested and found to comply with the limits for a class B digital device, pursuant to part 15 of the FCC Rules. These limits are designed to provide reasonable protection against harmful interference in a residential installation.

This equipment generates, uses and can radiate radio frequency energy and, if not installed and used in accordance with the instructions, may cause harmful interference to radio communications. However, there is no guarantee that interference will not occur in a particular installation. If this equipment does cause harmful interference to radio or television reception, which can be determined by turning the equipment off and on, the user is encouraged to try to correct the interference by one or more of the following measures:

- Reorient or relocate the receiving antenna.
- Increase the separation between the equipment and receiver.
- Connect the equipment into an outlet on a circuit different from that to which the receiver is connected.
- Consult the dealer or an experienced radio/TV technician for help.

Any changes or modifications not expressly approved by the party responsible for compliance could void the user's authority to operate the equipment.

Prohibition of Co-location

This device and its antenna(s) must not be co-located or operating in conjunction with any other antenna or transmitter

Safety Information

To maintain compliance with FCC's RF exposure guidelines, this equipment should be installed and operated with minimum distance 20cm between the radiator and your body. Use on the supplied antenna. **Use on the supplied antenna. Unauthorized antenna, modification, or attachments could damage the transmitter and may violate FCC regulations.**

Declaration of Conformity for R&TTE directive 1999/5/EC

Essential requirements – Article 3

Protection requirements for health and safety – Article 3.1a

Testing for electric safety according to EN 60950-1 has been conducted. These are considered relevant and sufficient.

Protection requirements for electromagnetic compatibility – Article 3.1b

Testing for electromagnetic compatibility according to EN 301 489-1 and EN 301 489-3 has been conducted. These are considered relevant and sufficient.

Effective use of the radio spectrum – Article 3.2

Testing for radio test suites according to EN 300 440-2 has been conducted. These are considered relevant and sufficient.

CE Mark Warning

This is a Class B product, in a domestic environment, this product may cause radio interference, in which case the user may be required to take adequate measures.