

APP' D	CHK' D	DSG' D

# SPECIFICATION FOR Remote Pointer-BD type

PAGE: 1/15  
DATE: 2002/7/25

## CONTENTS

1. Table of date revision
2. Description
3. Physical Description and Specification
4. RF Remote Pointer Specification
5. Electronical Block Diagram
- FSK (912MHZ) Transmitter
- FSK (912MHZ) Receiver
6. Electrical Characteristics
7. Mechanical Specification
8. Endurance
9. Environmental Tests
10. Assembly Drawing
11. Packing Drawing

### 1. Table of date-revision


						APPD.	CHKD.	DSGD.	SPEC. NO.	Remote Pointer FSK (912MHZ)
									RCBD0003-903	
SYMB.	PAGE	DATE	APPD.	SHKD.	OSGD.					

# SPECIFICATION FOR Remote Pointer-BD type

PAGE: **2/15**

DATE: 2002/01/22

## FCC GUIDELINES

This equipment has been tested and found to comply with the limits for a Class B digital device, pursuant to Part 15 of the FCC Rules.

These limits are designed to provide reasonable protection against harmful interference in a residential installation. This equipment generates, uses and can radiate radio frequency energy and, if not installed and used in accordance with the instructions may cause harmful interference to radio communications. However, there is no guarantee that interference will not occur in a particular installation.

If this equipment does cause harmful interference to radio or television reception, which can be determined by turning the equipment off and on, the user is encouraged to try to correct the interference by one or more of the following measures:

- Reorient or relocate the receiving antenna
- Increase the separation between the equipment and receiver
- Connect the equipment into an outlet on a circuit different from that to which the receiver is connected.
- Consult the dealer or an experienced radio/TV technician for help.

FCC Caution: Any changes or modifications not expressly approved by the party responsible for compliance could void the user's authority to operate this equipment.

This device complies with Part 15 of the FCC Rules. Operation is subject to the following two conditions: (1) This device may not cause harmful interference, and (2) this device must accept any interference received, including interference that may cause undesired operation.

						APPD.	CHKD.	DSGD.	SPEC. NO.	Remote Pointer FSK (912MHZ)
									RCBD0003-903	
SYMB.	PAGE	DATE	APPD.	SHKD.	OSGD.					

## SPECIFICATION FOR Remote Pointer-BD type

PAGE: 3/15

DATE: 2002/7/25

### 2. Description:

The RF Remote Pointer is a FSK (Frequency Shift Key) Transmitter for the frequency band 902-928 MHz. The Remote Pointer offers a full-integrated PLL synthesizer and a high efficiency power amplifier to drive a loop antenna, A special circuit design and an unique power amplifier design are used to save current consumption and to save battery life. This RF Remote Pointer is a best companion of Microsoft Power Point with Laser pointer designed, scroll wheel, FSR Moues Sensor, lets you scroll up and down as desired, when browsing the Internet move Mouse cursor or scrolling through any Windows documents gives reliable control and accuracy. Remote Pointer RF's radio frequency wireless technology solves all of your presentation input needs.

For the Receiver Modular use with USB 1.1 compliant can be easily actuated without affecting the position of the Remote Pointer.

Note that the Channel button (Red button) on the receiver should flash any time the Cordless device is moved or a button is pressed. Then, it will remember your product ID and Channel ID



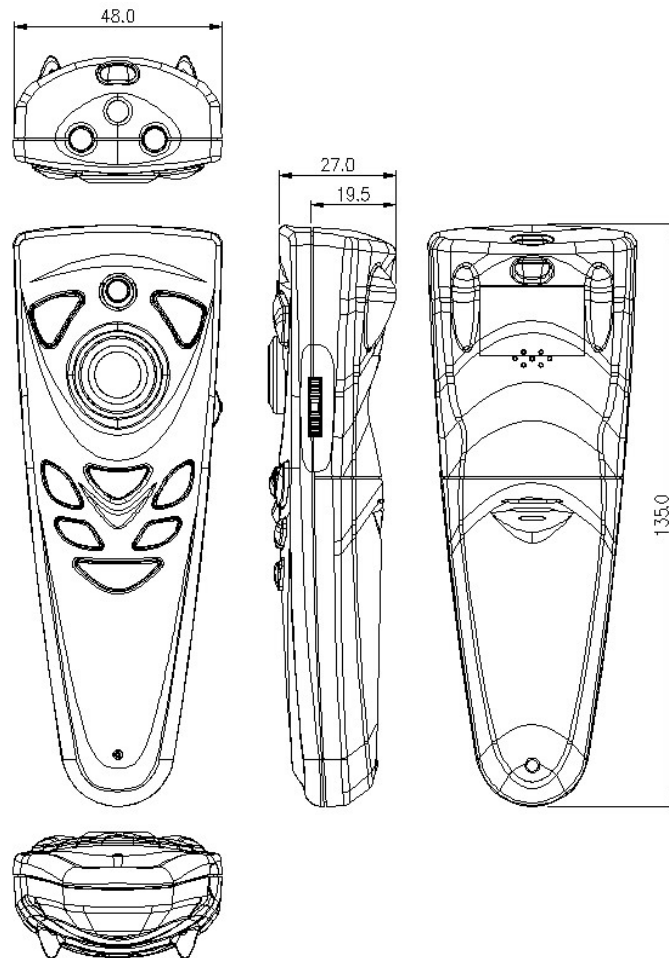
The Radio Frequency designed in this Version of RF Remote Pointer is FSK 912MHz and can be use in a range about 7-10 Meter from the Receiver at any directions. The Remote Pointer can operate for 6 months with AAA X 2 DC 3V batteries

						APPD.	CHKD.	DSGD.	SPEC. NO.	Remote Pointer FSK (912MHZ)
									RCBD0003-903	
SYMB.	PAGE	DATE	APPD.	SHKD.	OSGD.					

## SPECIFICATION FOR Remote Pointer-BD type

PAGE: 4/15  
DATE: 2002/7/25

### 3. Physical Description and Specification:



#### 3.1 Dimensions

The approximate dimensions of the mouse' s transmitter is as follows:

Length	135mm
Width	48 mm
Height	27 mm

#### 3.2 Weight

The approximate dimensions of the mouse' s transmitter is as follows:

Weight of the RF Remote Pointer not to exceed 85 grams (without batteries).

						APPD.	CHKD.	DSGD.	SPEC. NO.	Remote Pointer FSK (912MHZ)
									RCBD0003-903	
SYMB.	PAGE	DATE	APPD.	SHKD.	OSGD.					

## SPECIFICATION FOR Remote Pointer-BD type

PAGE: 5/15  
DATE: 2002/7/25

### 4.RF Remote Pointer Specification

The RF Remote Pointer consists of three major parts; a baseband controller, a radio that suitable for America available 902–928 MHz frees ISM band applications, and a low power uC-controlled, includes RF antenna supporting circuitry, together with basic RF software level.

4- 1 Range in meters: 7-10 Meter from the Receiver

4- 2 Frequency Range: 912MHz+/-50KHz (64 channels ID for Remote Pointer)

4- 3 Data transmitting by transistor module

4- 4 Operational voltage: 2.4~3.0 V

4-5 Low power consumption: On normal operation less than 6 mA

On Laser operation less than 25 mA

On sleep mode. Less than 10 uA.

4-6 Support Power down Mode and high efficiency power amplifier.

4-7 Receiver Fully Compliant Low Speed (1.5Mbps) USB 1.1 Interface

4-8 Suspend/resume operation and device remote wakeup

4-9 .FSR sensors unique pressure sensitivity delivers 360-cursor or motion control of both directions with a single touch And it is Microsoft serial, PS/2 two-button mouse standard.

#### 4-A Multimedia Function

a. Easy and quick touch to Multimedia features, such as Play ,Stop,Pause, Volume. Up/Down, and Mute.

b. Compatible with Windows®98, Windows®2000, Windows® ME and Windows XP

c. Support Multimedia audio CD and video CD player functions

d. One key to launch defined applications

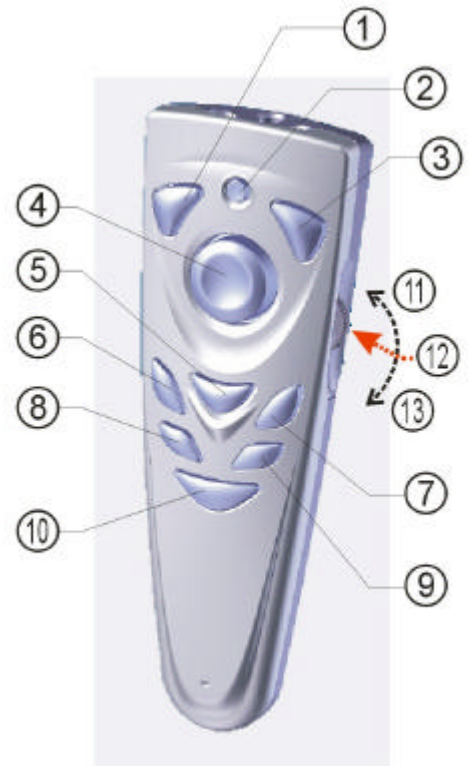
						APPD.	CHKD.	DSGD.	SPEC. NO.	Remote Pointer FSK (912MHZ)
									RCBD0003-903	
SYMB.	PAGE	DATE	APPD.	SHKD.	OSGD.					

## SPECIFICATION FOR Remote Pointer-BD type

PAGE: 6/15  
DATE: 2002/7/25

### 4.RF Remote Pointer Specification 4-10 Key Definition

	Mode-1	Mode-2 (Multimedia)
1	Left Mouse Key	
2	Laser Key	
3	Right Mouse Key	
4	FSR Mouse	
5	Mode key 1	Mode key 2
6	F5	Stop
7	ESC	Play/Pause
8	A	Previous track
9	B	Next track
10	C	Media player on
11	Up: Line Up	Up: Volume Up
12	Push: Drag	Push: Mute
13	Down: Line Down	Down: Volume Down



1) In Mode-1, M-Key have special function.

M-Key+ Laser Key (Laser Pointer Enable/Disable Button)

M-Key and Laser Key are pushed simultaneously more than 2 seconds (Red LED flashed), the laser pointer is enable/disable to use.

2) Change ID : Open the battery cover and push the ID button (Green LED flashed), the ID is changed.

Notice:

For safety consideration, in the laser pointer is enable to use situation, the M-key red LED flashed 1 time per 2 seconds. Besides, after you stop using laser pointer about 30 minutes, the laser pointer function will be disable.

						APPD.	CHKD.	DSGD.	SPEC. NO.	Remote Pointer FSK (912MHZ)
									RCBD0003-903	
SYMB.	PAGE	DATE	APPD.	SHKD.	OSGD.					

# SPECIFICATION FOR Remote Pointer-BD type

PAGE: 8/15  
DATE: 2002/7/25

## 4.RF Remote Pointer Specification

4-12

Frequency Range	912 MHz
Modulation	FSK
Channel No.	1
Channel I.D	6 bits    64
Operation Voltage	3V
Battery	AAA*2 DC 3V batteries.
Batter Life	6 months
TX Power	< 0dBm (1mW)
Transmission rate	6K bps
TX FM frequency deviation	+/- 60 KHz
Frequency tolerance	+/- 20ppm
Button	12
FSR Mouse	<b>Microsoft serial, PS/2 two-button mouse standard.</b>
Transmission Distance	7-10 Meter

						APPD.	CHKD.	DSGD.	SPEC. NO.	Remote Pointer FSK (912MHZ)
									RCBD0003-903	
SYMB.	PAGE	DATE	APPD.	SHKD.	OSGD.					

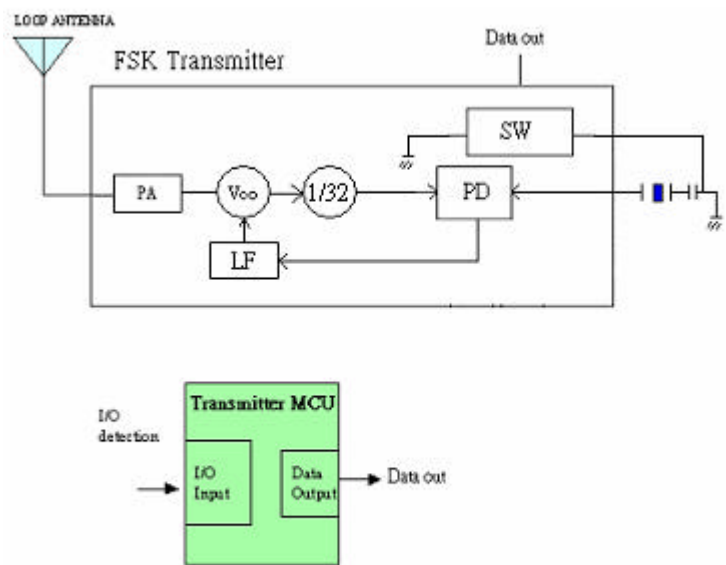


SPECIFICATION FOR  
Remote Pointer-BD type

PAGE:9/15  
DATE: 2002/7/25

5. Electrical Block Diagram

FSK (912MHZ) Transmitter



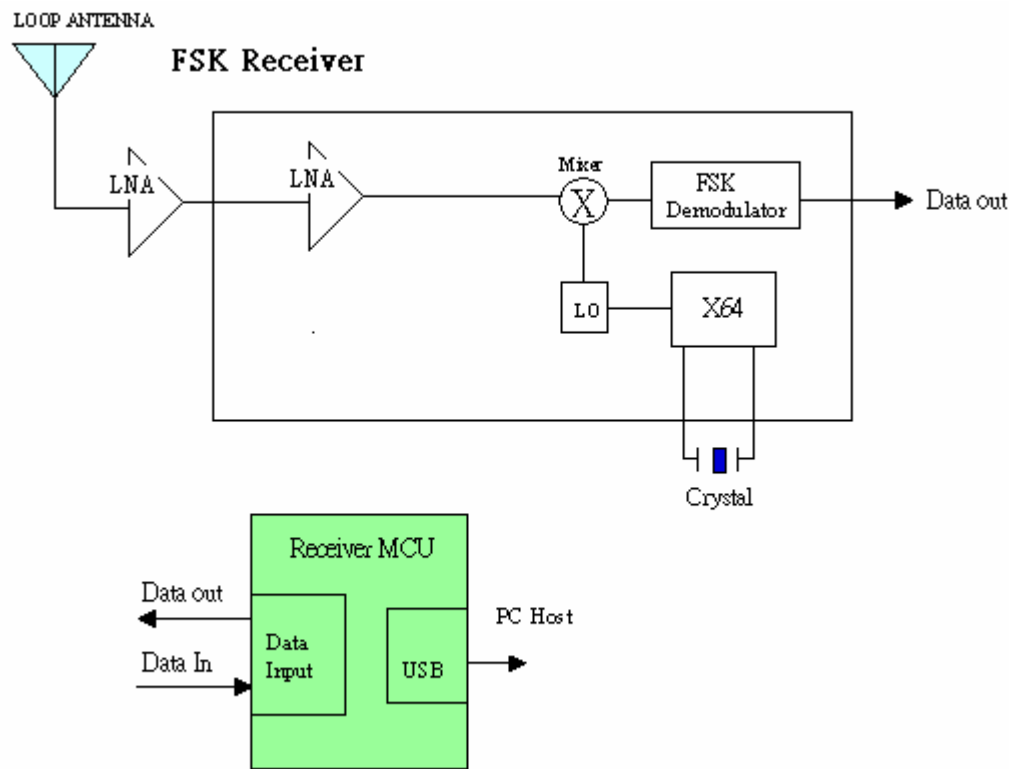
						APPD.	CHKD.	DSGD.	SPEC. NO.	Remote Pointer FSK (912MHZ)
									RCBD0003-903	
SYMB.	PAGE	DATE	APPD.	SHKD.	OSGD.					

SPECIFICATION FOR  
Remote Pointer-BD type

PAGE: 10/15  
DATE: 2002/7/25

5. Electrical Block Diagram

FSK (912MHZ) Receiver



USB 1.1 compliant The module is a USB high-speed class device (12 Mbps) and has the full functionality of a USB slave

						APPD.	CHKD.	DSGD.	SPEC. NO.	Remote Pointer FSK (912MHZ)
									RCBD0003-903	
SYMB.	PAGE	DATE	APPD.	SHKD.	OSGD.					

## SPECIFICATION FOR Remote Pointer-BD type

PAGE: 11/15  
DATE: 2002/7/25

### 6. Electrical Characteristics:

#### 6.1 GENERAL SPECIFICATION

##### 6.1.1 OPERATING CONDITIONS

Temperature : 0 ~ 40

Relative humidity : 10 ~ 85% RH (non-condensing)

##### 6.1.2 STORAGE CONDITIONS

Temperature : -10 ~60

Relative humidity : 5 ~ 90% RH (non-condensing)

Test and Measurement conditions

#### 6.2 Operational Range

Parameter	Min	Max	Unit
Supply Voltage	2.4	3.3	V
Frequency (Europe)	433.1	434.675	MHZ
Ambient temperature	-10	60	

#### 6.3 Electrostatic Discharge (ESD) Sensitivity

Direct discharge:

Test Voltage: Not less than 8 KV for Air discharge

Not less than 4 KV for Contact discharge

Indirect discharge:

Test Voltage: Not less than 4 KV for HCP

Not less than 4 KV for VCP

						APPD.	CHKD.	DSGD.	SPEC. NO.	Remote Pointer FSK (912MHZ)
									RCBD0003-903	
SYMB.	PAGE	DATE	APPD.	SHKD.	OSGD.					

# SPECIFICATION FOR Remote Pointer-BD type

PAGE: 12/15  
DATE: 2002/7/25

## 6.4 AC/DC Characteristics

Supply Voltage: VS= 3.0 V

Parameter		Min	Typ	Max	Unit
Current Consumption	Sleep mode		10		uA
	Transmit Mode		6	7	mA
	Laser operation		25		mA
Data rate			6K		bps
Sensitivity			-102		dbm
Transmitter settling time			2.2		ms
Power amplifier output		-4	-2	0	dbm
Output power (Transmit mode)			1		mW

## 6.5 Specifications for typical FSR Mouse

- 6.5.1 Hardware Interfaces: RS232C serial, PS/2 mouse port standard.
- 6.5.2 Output Data Formats: Microsoft serial, PS/2 two-button mouse standard.
- 6.5.3 System Compatibility: DOS, Windows, and OS/2 via serial and PS/2 ports. PS/2 compatible with any PS/2 mouse port.
- 6.5.4 Directional Control: Continuous 360° Control.
- 6.5.5 Lifetime: Dependent on integration method  
( Sensor lifetime>10 million cycles)
- 6.5.6 Primary Materials: FSR sensor may be made up of one or more of the following materials: Polyester, polysulfone, polyether imide, acrylic, and/or silver impregnated acrylic.

						APPD.	CHKD.	DSGD.	SPEC. NO.	Remote Pointer FSK (912MHZ)
									RCBD0003-903	
SYMB.	PAGE	DATE	APPD.	SHKD.	OSGD.					

## SPECIFICATION FOR Remote Pointer-BD type

PAGE: 13/15  
DATE: 2002/7/25

- 6.5.6 Chemical Resistance:      Dependent on front-panel material
- 6.5.7 Temperature:                Storage: -40°    to +185° F (-40° to + 85° C)
- (Extended-range electrical components are  
available to extend temperature range)
- 6.5.8 Shock:                        80G acceleration, 11 msec, half-sine\*
- 6.5.9 Vibration:                    Operating: 0.5G peak acceleration, 5-500Hz\*
- Storage: 5.0 peak acceleration, 5-500Hz\*

\* Based on lifetime tests conducted by Interlink Electronics

### 7. Mechanical Specification

ITEM	SPECIFICATION
7.1 Push Button Operating force	Max. 150gf in any direction.
7.2 Push Button Action distance	(1) Apply vertical to the center of the push button pin Dia 4mm
7.3 Push Button strength	A static Force of 3 Kg being applied vertically to the center of the push button for 1 minute.
7.4 Scrolling operation force	Max. 50gf in tangent direction.

						APPD.	CHKD.	DSGD.	SPEC. NO.	Remote Pointer FSK (912MHZ)
									RCBD0003-903	
SYMB.	PAGE	DATE	APPD.	SHKD.	OSGD.					

# SPECIFICATION FOR Remote Pointer-BD type

PAGE: 14/15  
DATE: 2002/7/25

## 8.Endurance

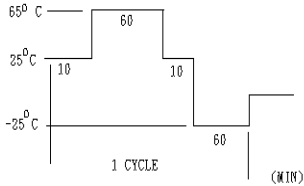
ITEM	SPECIFICATION
8.1 Operating Life (With battery)	(1) 100000 cycle operations at a rate of 15~30 cycle/minute (2) Load: 180gf
8.2 Operating Life (W/O battery)	(1) 300000 cycle operations at a rate of 150~200 cycle/minute (2) Load: 180gf
8.3 Drop test	(1)Height 600 $\pm$ 20mm (2) Test surface concrete (3) Direction free (4) Test times 3 times
8.4 ESD test	(1) Air Discharge: over 8KV (2) Contact Discharge: over 4KV
8.5 Scrolling life Test	(1) Load 50gf tangent load (2)Speed 15~20 mm/sec (3) Travel 10Km

						APPD.	CHKD.	DSGD.	SPEC. NO.	Remote Pointer FSK (912MHZ)
									RCBD0003-903	
SYMB.	PAGE	DATE	APPD.	SHKD.	OSGD.					

# SPECIFICATION FOR Remote Pointer-BD type

PAGE: 15/15  
DATE: 2002/7/25

## 9. Environmental Tests

ITEM	SPECIFICATION
9.1 Heat load test	Measure initial value at standard testing conditions. <b>Leave samples in <math>60 \pm 2</math> °C for <math>96 \pm 5</math> hours, and in standard testing conditions for 2 hours, then take measurements within 1 hour.</b>
9.2 Humidity load test	Leave samples in $40 \pm 5$ °C for $24 \pm 2$ hours, and in standard testing conditions for 2 hours, then take measurements. <b>Leave samples in <math>40 \pm 5</math> °C, 90~95%RH, for <math>96 \pm 5</math> hours, and in standard testing conditions for 2 hours, then take measurements within 1 hour.</b>
9.3 Cold test	Measure initial value at standard testing conditions. <b>Leave samples in <math>-15 \pm 2</math> °C for <math>96 \pm 5</math> hours, and in Standard testing conditions for 2 hours, then take Measurements within 1 hour.</b>
9.4 Vibration test	Vibration test fixture is used to vibrate the tuner with a total amplitude 1mm and frequency ranging from 10 to 55Hz, once per minute onsecutively, for 40 minutes in each of three directions. X. Y and Z
9.5 HEAT CYCLE TEST	<p>Measure initial value at standard testing conditions.</p> <p><b>1. Conditions</b></p>  <p><b>2. Test cycle: 10 cycles</b></p>

**NOTE: When using RF products, keep away from hi-frog electric products.**

						APPD.	CHKD.	DSGD.	SPEC. NO.	Remote Pointer FSK (912MHZ)
									RCBD0003-903	
SYMB.	PAGE	DATE	APPD.	SHKD.	OSGD.					